

AD-A053 843

NAVAL RESEARCH LAB WASHINGTON D C  
DIGITAL IMAGE PROCESSING BY USE OF LOCAL STATISTICS.(U)  
MAR 78 J LEE

F/G 5/8

UNCLASSIFIED

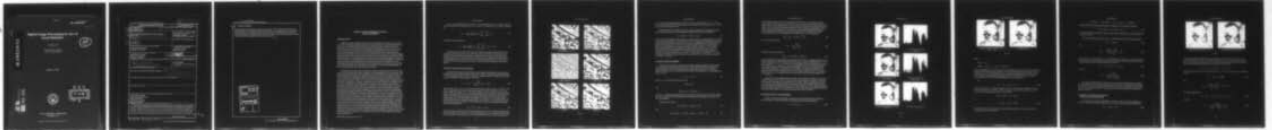
NRL-8192

SBIE-AD-E000 139

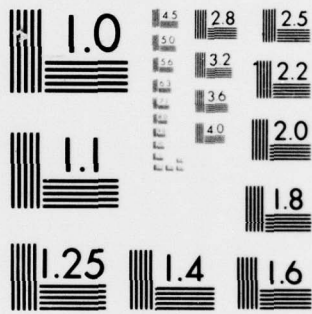
.NL

| OF |

AD  
A053843



END  
DATE  
FILMED  
6 -78  
DDC



MICROCOPY RESOLUTION TEST CHART  
NATIONAL BUREAU OF STANDARDS-1963-A

adw000139  
NRL Report 8192

3/24/78

# Digital Image Processing by Use of Local Statistics

JONG-SEN LEE

*Systems Research Branch  
Space Systems Division*

12  
act

AD A 053843

March 1, 1978

AD No. \_\_\_\_\_  
DDC FILE COPY



DDC  
RECEIVED  
MAY 12 1978  
B

NAVAL RESEARCH LABORATORY  
Washington, D.C.

Approved for public release; distribution unlimited.

⑨ Final rept.

SECURITY CLASSIFICATION OF THIS PAGE (When Data Entered)

REPORT DOCUMENTATION PAGE		READ INSTRUCTIONS BEFORE COMPLETING FORM
1. REPORT NUMBER 14 <b>NRL Report 8192</b>	2. GOVT ACCESSION NO.	3. RECIPIENT'S CATALOG NUMBER
4. TITLE (and Subtitle) 6 <b>DIGITAL IMAGE PROCESSING BY USE OF LOCAL STATISTICS</b>		5. TYPE OF REPORT & PERIOD COVERED <b>Final report on one phase of a continuing NRL Problem.</b>
7. AUTHOR(s) 10 <b>Jong-Sen/Lee</b>		6. PERFORMING ORG. REPORT NUMBER
9. PERFORMING ORGANIZATION NAME AND ADDRESS <b>Naval Research Laboratory Washington, D.C. 20375</b>		8. CONTRACT OR GRANT NUMBER(s) <b>6153N</b>
11. CONTROLLING OFFICE NAME AND ADDRESS <b>Department of the Navy Office of Naval Research Arlington, Va. 22217</b>	12. REPORT DATE 11 1 <b>March 1978</b>	10. PROGRAM ELEMENT, PROJECT, TASK AREA & WORK UNIT NUMBERS <b>NRL Problem B01-10 RR014-02-41-6152</b>
14. MONITORING AGENCY NAME & ADDRESS (if different from Controlling Office) 16 <b>RR014021</b> 17 <b>RR0140241</b>		13. NUMBER OF PAGES <b>13</b> 12 14p
16. DISTRIBUTION STATEMENT (of this Report) <b>Approved for public release; distribution unlimited.</b>	15. SECURITY CLASS. (of this report) <b>UNCLASSIFIED</b>	15a. DECLASSIFICATION/DOWNGRADING SCHEDULE
18. SUPPLEMENTARY NOTES	18 <b>SBIE</b>	19 <b>AD-E000 139</b>
19. KEY WORDS (Continue on reverse side if necessary and identify by block number) <b>Digital image processing Image contrast enhancement Image noise filtering Local mean and variance Real-time processing</b>		
20. ABSTRACT (Continue on reverse side if necessary and identify by block number) <b>Computational techniques involving contrast enhancement and noise filtering on two-dimensional image arrays were developed, based on their local mean and variance. These algorithms are nonrecursive and do not require a transform. They share the same characteristics in that each pixel is processed independently. Consequently, this approach has an obvious advantage when used in real-time digital image processing applications and where parallel processors can be used. For both the additive and multiplicative cases, the a priori mean and variance of each pixel is derived from its local mean and variance.</b>		

(Continued on back)

→ next page

20. Abstract (Continued)

Then, the minimum mean-square-error estimator in its simplest form is applied to obtain the noise-filtering algorithms. For multiplicative noise a statistical optimal linear approximation is made. Experimental results show that such an assumption yields a very effective filtering algorithm. Examples on images containing  $256 \times 256$  pixels are given. Results show that in most cases the techniques developed in this report are readily adaptable to real-time image processing.

ACCESSION for		
NTIS	White Section	<input checked="" type="checkbox"/>
DDC	Buff Section	<input type="checkbox"/>
UNANNOUNCED		<input type="checkbox"/>
JUSTIFICATION _____		
BY _____		
DISTRIBUTION/AVAILABILITY CODES		
Dist.	AVAIL	and/or SPECIAL
A		

## DIGITAL IMAGE PROCESSING BY USE OF LOCAL STATISTICS

### INTRODUCTION

Image processing on digital computers has been gaining in acceptance in recent years [1-3]. Early techniques in image processing concentrated mostly on procedures that were carried out computationally in the frequency domain (Fourier or Walsh), which was a natural extension of one-dimensional linear signal processing theory. In due course it became well known that computing a two-dimensional transform for a large data array is a very time-consuming activity even with fast transform techniques on large computers. Hence, implementation of frequency-domain procedures for real-time processing of images appears less than promising. More recent works based on an application of the Kalman filtering algorithm [4] or Bayesian estimation extended to two-dimensional arrays led to the concept of a recursive filtering algorithm [5,6]. The power of recursive algorithms for real-time, one-dimensional signal processing is well established. However, when applied to a two-dimensional array, the algorithm operates in the spatial domain in which pixels have to be processed sequentially. As a consequence, the procedure is no longer computationally efficient and loses its attraction for real-time processing.

Algorithms developed in this report share a particular characteristic in that each pixel can be processed separately without waiting for its neighboring pixels to be processed. This characteristic permits a direct implementation of these algorithms for real-time image processing. Applying local statistics to image processing is not a new idea. Ketcham, et al. [7] used the entire local histogram for real-time image enhancement, and Wallis [8] applied local mean and variance to filter out scan-line noise, with striking results. This paper extends this family of algorithms to contrast enhancement, and noise filtering. Both additive white noise and multiplicative white noise cases are considered. Most additive noise filtering approaches utilize fast Fourier transform, convolution or recursive algorithms. In the transform and convolution methods, the autocorrelation between pixels is either assumed or approximated, and in the recursive algorithm, a linear causal or semicausal autoregressive image model is generally assumed. The techniques based on the use of local mean and variance described in this report deviate from these approaches. The basic assumption is that the sample mean and variance of a pixel is equal to the local mean and variance of all pixels within a fixed range surrounding it. The validity of this assumption is debatable, but so are most other statistical image representations encountered in the current practice. In the additive noise-filtering case, the a priori mean (variance) of the estimated image is calculated as the difference between the mean (variance) of the noise-corrupted image and the mean (variance) of the noise by itself. This technique is extended to include multiplicative noise filtering and also the case involving both multiplicative and additive noise. Although this simple approach may not have the mathematical elegance and sophistication of a few other techniques, our experimental results and those reported by Wallis [8] indicate that the local mean and variance technique is a very effective tool in both contrast-stretching and noise-filtering applications.

Let  $x_{i,j}$  be the brightness of the pixel  $(i, j)$  in a two-dimensional  $N \times N$  image. The local mean and variance are calculated over a  $(2n + 1)(2m + 1)$  window. The local mean is defined as

$$m_{i,j} = \frac{1}{(2n + 1)(2m + 1)} \sum_{k=n-\ell}^{n+i} \sum_{\ell=m-j}^{m+j} x_{k,\ell}. \quad (1)$$

Similarly, the local variance is

$$v_{i,j} = \frac{1}{(2n + 1)(2m + 1)} \sum_{k=n-i}^{n+i} \sum_{\ell=m-j}^{m+j} (x_{k,\ell} - m_{i,j})^2. \quad (2)$$

In this report, the next section is devoted to spatial contrast enhancement for which only the local mean is required. The third section deals with additive noise filtering; the fourth section treats images corrupted by multiplicative noise; and the following section extends the results of the third and fourth sections to images corrupted by both additive and multiplicative noise. In the fifth section, a simplified algorithm is discussed to approximate the local mean and variance and future research using local statistics is briefly mentioned.

## SPATIAL CONTRAST ENHANCEMENT

Grey-level rescaling, high-pass filtering, and histogram redistribution [9] are the most popular techniques in image contrast enhancement. Wallis [8] suggested an algorithm based on local mean and variance in which each pixel is required to have a "desirable" local mean  $m_d$  and a "desirable" local variance  $v_d$ , such that

$$x'_{i,j} = m_d + \sqrt{\frac{v_d}{v_{i,j}}} (x_{i,j} - m_{i,j}), \quad (3)$$

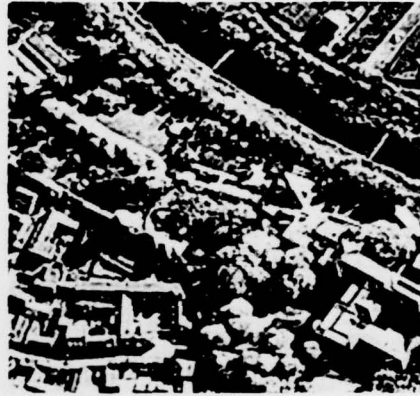
where in Eq. (3),  $m_{i,j}$  and  $v_{i,j}$  are local mean and variance as given by Eqs. (1) and (2). It is easy to verify that the  $x'_{i,j}$  has a mean  $m_d$  and variance  $v_d$ , if we consider  $m_{i,j}$  and  $v_{i,j}$  as the true mean and variance of  $x_{i,j}$ . The main drawback of this technique is that it tends to enhance subtle details at the expense of the principal features, which are lost in the process. Figure 1 shows the original image and the image processed by Eq. (3). The river in the original image and other large objects are difficult to recognize in the processed image. To compensate for this, we designed an algorithm such that a pixel  $x_{i,j}$  will maintain its local mean, and yet permits its variance to be modified by a factor of its original local variance. The modified algorithm is

$$x'_{i,j} = m_{i,j} + k(x_{i,j} - m_{i,j}), \quad (4)$$

where  $k$ , the gain, is the ratio of new local standard deviation to the original standard deviation. This scheme has a distinct computational advantage over the scheme rooted in Eq. (3). The computation of local variance  $v_{i,j}$  is not required and only  $m_{i,j}$  need be computed. If



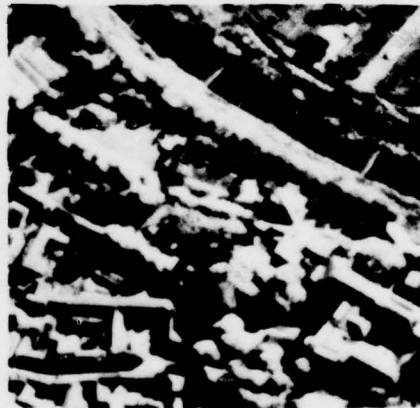
(a) Original (or  $k = 1$ )



(d)  $k = 3$



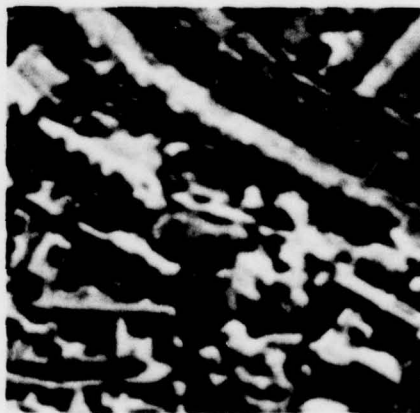
(b) Wallis' algorithm



(e)  $k = 0.5$



(c)  $k = 2$



(f)  $k = 0$

Figure 1



$k > 1$ , the image will be sharpened as if acted upon by a high-pass filter. If  $0 \leq k < 1$ , the image will be smoothed as if passed through a low-pass filter. In the extreme case,  $k = 0$  and  $x'_{i,j}$  is equal to its local mean  $m_{i,j}$ .

This algorithm can be easily extended to enhance images with an ill-distributed histogram. Let  $g(x)$  be the grey-level rescaling function [9]; then Eq. (4) is modified to

$$x'_{i,j} = g(m_{i,j}) + k(x_{i,j} - m_{i,j}). \quad (5)$$

In the case of a linear grey-level stretch,  $g(x)$  is a linear relation. Several images are processed using Eq. (5) and are shown in the remainder of Fig. 1. The linear function  $g(x)$ , used in this picture, yields an effective contrast stretch in both the highlights and the dark areas of the image. The window size of  $3 \times 3$  or  $5 \times 5$  is large enough to carry out contrast enhancement. For noise filtering (to be discussed in later sections), however, a  $7 \times 7$  or larger dimensional window is more desirable. All images of Fig. 1 are processed with a  $5 \times 5$  window. Figure 1c shows that for  $k = 2$ , both the gross features and subtle details are enhanced in the same proportion. The case  $k = 1$  has no effect on the image. For  $k = 0.5$ , the image is blurred as if passed through a low-pass filter. For  $k = 0$ , the image is averaged over the  $5 \times 5$  window.

#### ADDITIVE NOISE FILTERING

In this section, attention is focused on filtering of images degraded by white additive noise. Most current approaches to this problem employ frequency-domain techniques, direct inversion, or recursive Kalman filtering. In this report, we derive a very simple algorithm based on the use of local mean and variance of an image. Let  $z_{i,j}$  be the degraded pixel  $x_{i,j}$ ; then

$$z_{i,j} = x_{i,j} + w_{i,j}, \quad (6)$$

where  $w_{i,j}$  is a white random sequence, with

$$E[w_{i,j}] = 0$$

and

$$E[w_{i,j}w_{k,\ell}] = \sigma_1^2 \delta_{i,k} \delta_{j,\ell},$$

where  $\delta_{i,k}$  is the Kronecker delta function and  $E$  is the expectation operator. (The distribution of  $w_{i,j}$  is irrelevant in this derivation.) The problem is to estimate  $x_{i,j}$ , given  $z_{i,j}$  and the noise statistics.

From Eq. (6), we have

$$\bar{x}_{i,j} \triangleq E[x_{i,j}] = E[z_{i,j}] = \bar{z}_{i,j} \quad (7)$$

and

$$Q_{i,j} \triangleq E[(x_{i,j} - \bar{x}_{i,j})^2] = E[(z_{i,j} - \bar{z}_{i,j})^2] - \sigma_1^2. \quad (8)$$

In most filtering techniques, the a priori mean and variance of  $x_{i,j}$  are derived from an assumed autocorrelation model or, recursively, from an autoregressive Markov sequence. In either method, it is an approximation. Assume that  $\bar{x}_{i,j}$  and  $Q_{i,j}$  are the a priori mean and variance of  $x_{i,j}$ , which in turn are approximated by the local mean and variance of Eqs. (7) and (8). Under this assumption, it is very easy to obtain a filtering algorithm either by minimizing the mean-square error or by weighted least-square estimation [10]. Both methods will produce the same algorithm. The estimated  $x_{i,j}$ ,  $\hat{x}$ , is computed by

$$\hat{x}_{i,j} = \bar{x}_{i,j} + k_{i,j}(z_{i,j} - \bar{x}_{i,j}), \quad (9)$$

where the gain is given by

$$k_{i,j} = \frac{Q_{i,j}}{Q_{i,j} + \sigma_1^2}. \quad (10)$$

Equation (9) can be written as

$$\hat{x}_{i,j} = (1 - k_{i,j})\bar{x}_{i,j} + k_{i,j}z_{i,j}. \quad (11)$$

Since  $Q_{i,j}$  and  $\sigma_1^2$  are both positive,  $k_{i,j}$  will lie between 0 and 1. A simple intuitive interpretation is that, for a low signal-to-noise ratio region,  $Q_{i,j}$  is small compared with  $\sigma_1^2$ ,  $k_{i,j} \approx 0$ , and the estimated  $x_{i,j}$  is  $\bar{x}_{i,j}$ . Conversely, for a high signal-to-noise ratio region,  $Q_{i,j}$  is much larger than  $\sigma_1^2$ ,  $k_{i,j} \approx 1$ , and  $\hat{x}_{i,j} \approx z_{i,j}$ , the corrupted pixel. The use of different window sizes will greatly affect the quality of processed images. If the window is too small, the noise-filtering algorithm is not effective. If the window is too large, subtle details of the image will be lost in the filtering process. Our experiments indicate that a  $7 \times 7$  window is a fairly good choice. All images presented in this and later sections are processed by the  $7 \times 7$  window.

Figure 2 shows the original image, the image contaminated with additive noise and the estimated image produced by the local mean and variance algorithm. Clearly, in a smooth area, the pixel is averaged over the window and in a high-contrast or edge area, the noise-corrupted pixels are weighted higher than their local mean value. Figures 2d, 2e and 2f are the plots of intensity along a specific scan line for the original, the noise-corrupted, and the processed images, respectively. This algorithm works equally well for an image corrupted by a Gaussian noise. Results for the latter case are shown in Figs. 3a and 3b.

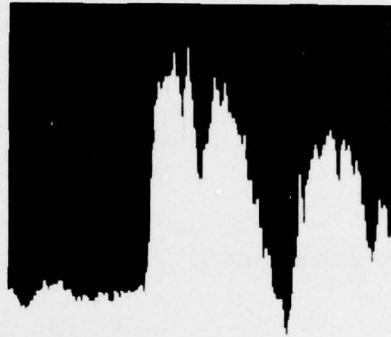
## MULTIPLICATIVE NOISE FILTERING

Images containing multiplicative noise have the characteristic that the brighter the area the noisier it is. Mathematically, the degraded pixel can be represented by

$$z_{i,j} = x_{i,j}u_{i,j}, \quad (12)$$



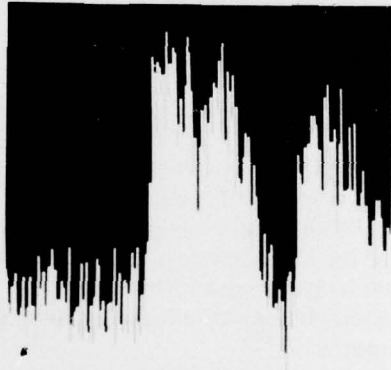
(a) Original



(d) Original intensity profile along a scan line



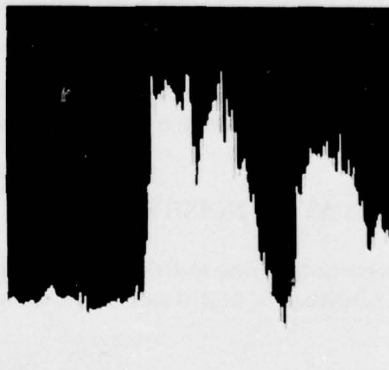
(b) Original plus additive. Uniform noise (-30, 30)



(e) Profile at (d) contaminated by additive noise



(c) Additive noise removed with (7 x 7) mesh  $\sigma_1^2 = 300$



(f) Profile at (e) filtered for noise

Figure 2

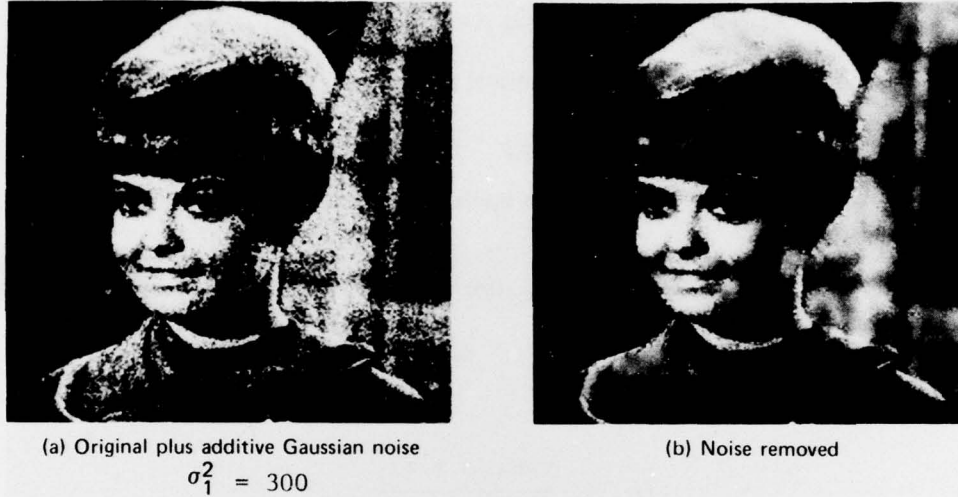


Figure 3

where

$$E\{u_{i,j}\} = \bar{u}_{i,j}$$

$$E[(u_{i,j} - \bar{u}_{i,j})(u_{k,\varrho} - \bar{u}_{k,\varrho})] = \sigma_2^2 \delta_{i,k} \delta_{j,\varrho}.$$

Nahi and Naraghi [11] treat this problem via the Kalman-Bucy approach, which necessitates solving the nonlinear estimation problem by numerical integration. In this report the non-linearity in Eq. (12) is treated differently. An optimal linear approximation of Eq. (12) is used to produce a filtering algorithm similar to that for the additive noise case. Experimental results show that the derived algorithm is a very promising one.

Let

$$z'_{i,j} = Ax_{i,j} + Bu_{i,j} + C, \quad (13)$$

where  $A$ ,  $B$ , and  $C$  are not random variables. They are to be chosen to minimize the mean-square error between  $z_{i,j}$  and  $z'_{i,j}$  and also to make  $z'_{i,j}$  an unbiased estimate of  $z_{i,j}$ . For  $z'_{i,j}$  to be the unbiased estimate of  $z_{i,j}$ , we must have

$$A\bar{x}_{i,j} + b\bar{u}_{i,j} + C = \bar{x}_{i,j}\bar{u}_{i,j},$$

or

$$C = \bar{x}_{i,j}\bar{u}_{i,j} - A\bar{x}_{i,j} - B\bar{u}_{i,j}. \quad (14)$$

Substituting Eq. (14) into (13) and forming the mean-square error, we arrive at the performance index to be minimized,

$$J = E[A(x_{i,j} - \bar{x}_{i,j}) + B(u_{i,j} - \bar{u}_{i,j}) - (x_{i,j}u_{i,j} - \bar{x}_{i,j}\bar{u}_{i,j})]^2.$$

Upon carrying out the necessary mathematical procedures, we obtain the relation

$$z'_{i,j} = \bar{u}_{i,j}x_{i,j} + \bar{x}_{i,j}(u_{i,j} - \bar{u}_{i,j}). \quad (15)$$

It is not surprising to find that Eq. (15) actually is the first-order Taylor series expansion of  $z_{i,j}$  about  $(\bar{x}_{i,j}, \bar{u}_{i,j})$ .

The a priori mean and variance of  $x_{i,j}$  are computed from Eq. (12) and are given by

$$\bar{x}_{i,j} = \bar{z}_{i,j}/\bar{u}_{i,j} \quad (16)$$

and

$$Q_{i,j} = \frac{\text{Var}(z_{i,j}) + \bar{z}_{i,j}^2}{\sigma_2^2 + \bar{u}_{i,j}^2} - \bar{x}_{i,j}^2, \quad (17)$$

in which  $\text{Var}(z_{i,j})$  is the variance of  $z_{i,j}$ . The quantities  $\bar{z}_{i,j}$  and  $\text{Var}(z_{i,j})$  are approximated by the local mean and local variance of the corrupted image. Using Eqs. (16), (17), and (15) and applying static Kalman filtering algorithm, we have

$$\hat{x}_{i,j} = \bar{x}_{i,j} + k_{i,j}(z_{i,j} - \bar{u}_{i,j}\bar{x}_{i,j}), \quad (18)$$

in which

$$k_{i,j} = \frac{\bar{u}_{i,j}Q_{i,j}}{\bar{x}_{i,j}^2\sigma_2^2 + \bar{u}_{i,j}^2Q_{i,j}}. \quad (19)$$

An experimental example is shown in Fig. 4, in which the original image is corrupted by multiplicative noise uniformly distributed between 0.7 and 1.0, and the estimated image has been processed by the algorithm developed in this section. Considerable improvement is shown in the processed image, thus substantiating the effectiveness of the local mean and variance technique.

#### FILTERING OF COMBINED ADDITIVE AND MULTIPLICATIVE NOISE

It is very easy to extend the algorithms of previous sections to deal with images corrupted by both additive and multiplicative noise. A noise-corrupted image is described by

$$z_{i,j} = x_{i,j}u_{i,j} + w_{i,j} \quad (20)$$

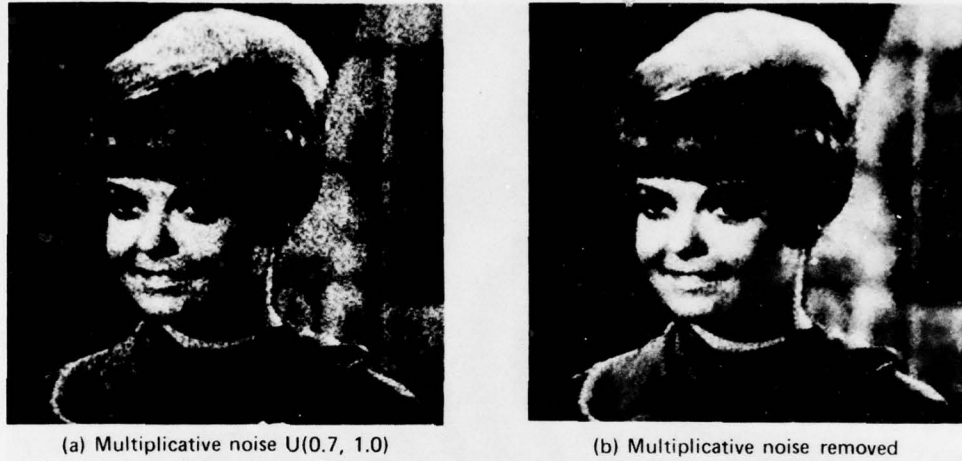


Figure 4

in which the statistical characteristics are the same as those given in the previous two sections. Assume that  $u_{i,j}$  and  $w_{i,j}$  are independent white noises. This independence assumption can be removed, but the result is a more complicated formulation. Following the idea of an optimal linear approximation of the previous section, we have

$$z'_{i,j} = \bar{u}_{i,j}x_{i,j} + \bar{x}_{i,j}(u_{i,j} - \bar{u}_{i,j}) + w_{i,j}.$$

The formulas for the a priori mean and variance of  $x_{i,j}$  of the previous section are modified to read

$$\bar{x}_{i,j} = (\bar{z}_{i,j} - \bar{w}_{i,j})/\bar{u}_{i,j} \quad (21)$$

and

$$Q_{i,j} = \frac{\text{Var}(z_{i,j}) + \bar{z}_{i,j}^2}{\sigma_2^2 + \bar{u}_{i,j}^2} - \bar{x}_{i,j}^2 - \sigma_1^2.$$

The filtering algorithm is

$$\hat{x}_{i,j} = \bar{x}_{i,j} + k_{i,j}(z_{i,j} - \bar{u}_{i,j}\bar{x}_{i,j} - \bar{w}_{i,j}), \quad (22)$$

in which

$$k_{i,j} = \frac{\bar{u}_{i,j}Q_{i,j}}{\bar{x}_{i,j}^2\sigma_2^2 + \bar{u}_{i,j}^2Q_{i,j} + \sigma_1^2}. \quad (23)$$



(a) Image corrupted by additive and multiplicative noise

(b) Restored

Figure 5

Figure 5a shows the image corrupted by an additive noise uniformly distributed between grey levels  $-20$  and  $+20$  and also a multiplicative noise uniformly distributed between multiplicative factors  $0.7$  and  $1.0$ . The processed image, Figure 5b, shows a very significant improvement over the original image.

#### REMARKS AND CONCLUSIONS

The principal computational load of the developed algorithms is in the calculation of the local means and variances, especially the latter. To lighten this burden, Wallis [8] proposed a fast algorithm in which the image is partitioned into square subregions over which the local mean and variance are computed. Then the local mean and variance of a particular pixel are approximated by the use of two-dimensional interpolation formulas. Results, as reported by Wallis [8], are quite favorable. It is believed that Wallis' approach will yield an equally impressive improvement when applied to our contrast-enhancement and noise-filtering algorithms.

In conclusion, image processing algorithms presented herein, based on considerations of the local image statistics, have a structure that makes them naturally suitable for parallel processing. Since the latter approach offers great computational economy, real- or near real-time processing can be achieved. Future research in this area is to extend the method to image restoration of motion blur and other degradations characterized by local correlations around pixels.

#### ACKNOWLEDGMENT

The author wishes to thank Dr. I. Jurkevich and Dr. A. F. Petty for many helpful discussions and much encouragement.

REFERENCES

1. T. S. Huang, ed., "Picture Processing and Digital Filtering," in *Topics in Applied Physics*, Vol. 6, Springer-Verlag, Berlin, 1975.
2. H. C. Andrews and B. R. Hunt, *Digital Image Restoration*, Englewood Cliffs, N.J. Prentice-Hall, 1977.
3. A. Rosenfeld and A. C. Kak, *Digital Picture Processing*, Academic Press, New York, 1976.
4. R. E. Kalman, "A New Approach to Linear Filtering and Prediction Problems," *ASME, Trans. D82*, 35-45 (1960).
5. A. K. Jain, "A Semicausal Model for Recursive Filtering of Two-Dimensional Images," *IEEE Trans. C-26*, 343-350 (4), (Apr. 1977).
6. N. E. Nahi and T. Assefi, "Bayesian Recursive Image Estimation," *IEEE Trans. C-21*, 734-738 (July 1972).
7. P. J. Ketcham, R. W. Lowe, and J. W. Weber, "Real Time Image Enhancement Techniques," pp. 120-125 in Proceeding of the Seminar in Image Processing, Pacific Grove, Calif., Feb., 1976. J. C. Urback, editor, *Proc. SPIE 74*, 1976.
8. R. Wallis, "An Approach to the Space Variant Restoration and Enhancement of Images," Proceeding of the Symposium on Current Mathematical Problems in Image Science, Naval Postgraduate School, Monterey, Calif., Nov. 1976.
9. W. Frei, "Image Enhancement by Histogram Hyperbolization," *Computer Graphics and Image Processing 6*, (3) 286-294 (June 1977).
10. A. E. Bryson and Y.-C. Ho, Chap. 12, *Applied Optimal Control*, Blaisdell Publishing Company, Waltham, Mass., 1969.
11. N. E. Nahi and M. Naraghi, "A General Image Estimation Algorithm Applicable to Multiplicative and Non-Gaussian Noise," University of Southern California, Image Processing Institute Semi-Annual TR No. 620, 30 September 1975.