

AD-A048 166

WEIDLINGER ASSOCIATES NEW YORK
DYNAMIC RESPONSE OF A SUBMERGED ELASTIC STRUCTURE WITH ELASTIC --ETC(U)
AUG 77 F L DIMAGGIO

N00014-72-C-0119

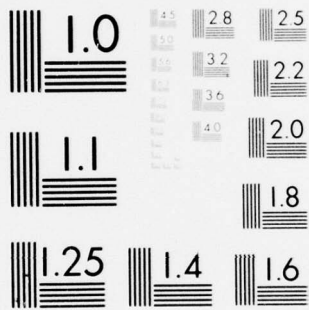
NL

UNCLASSIFIED

1 OF 1
ADAO48166



END
DATE
FILMED
1 - 78
DDC



MICROCOPY RESOLUTION TEST CHART
NATIONAL BUREAU OF STANDARDS 1963-A

FB.

AD A 0 4 8 1 6 6

3

WEIDLINGER ASSOCIATES
110 EAST 59TH STREET
NEW YORK, NEW YORK 10022

DYNAMIC RESPONSE OF A SUBMERGED ELASTIC STRUCTURE
WITH ELASTIC STRUCTURES ATTACHED TO IT BY INELASTIC SPRINGS

by

F. L. DiMaggio

OFFICE OF NAVAL RESEARCH
CONTRACT NO. N00014-72-C-0119

TECHNICAL NOTE
AUGUST 1977

[Handwritten signatures and scribbles]

DDC
RECEIVED
JAN 9 1978
[Handwritten initials]

Approved for public release; distribution unlimited.

AD No. _____
DDC FILE COPY

ABSTRACT

A procedure is described which may be used to obtain the dynamic response to shock loading of a submerged shell with internal structure attached to it by nonlinear mountings.

DDC
RECEIVED
JAN 9 1978

15-2114
✓
A

DISTRIBUTION STATEMENT A
Approved for public release
Distribution Unlimited

I INTRODUCTION

In this report, a procedure is described which, when appropriately generalized, may be used to obtain the dynamic response of submerged shells to shock loadings.

For simplicity of presentation, the stiffened submerged shell and bulkheads will be replaced by an elastic beam S , and the attached internal structure, σ , will be discussed as either a (discrete) elastic mass-spring system or a (continuous) elastic beam, all coplanar. σ is attached to S by nonlinear mountings with force-displacement relations denoted by $f_i(\delta_i)^*$, in which i denotes position s_i and δ_i is the relative displacement between S and σ at s_i .

Extension of the equations developed herein to more complicated systems σ and S will be presented in a sequel to this report, Ref. [3].

The effect of surrounding fluid and an incident shock wave introduces additional generalized forces in the equations of motion of S , as discussed in detail in Ref. [1].

*) In what follows, the subscript i of f_i is suppressed when there is only one point of attachment.

II SIMPLE NONLINEAR OSCILLATOR ON ELASTIC BEAM

See Fig. 1:

$$\delta_1 = q_{\sigma 1} - d_S(s_1, t) \quad (1)$$

$$d(s, t) = \sum_i q_{Si}(t) \phi_{Si}(s) \quad (2)$$

in which $\phi_{Si}(s)$ are the free-free modes of S, $q_{Si}(t)$ are the corresponding generalized coordinates, and t is time.

The dynamic reaction of σ on S, illustrated in Fig. 2, is equal and opposite to that of S on σ .

The equation of motion (EOM) of σ is, using Eqs. (1) and (2),

$$M_1 \ddot{q}_{\sigma 1} + f(q_{\sigma 1} - \sum_{i=1}^{v_S} q_{Si} c_{Si1}) = 0 \quad (3)$$

in which

$$c_{Si1} = \phi_{Si}(s_1) \quad (4)$$

and v_S is the number of modes of S utilized. The EOM of S are

$$\mu_{Sj} \ddot{q}_{Sj} + \kappa_{Sj} q_{Sj} = c_{Sj1} f(q_{\sigma 1} - \sum_{i=1}^{v_S} q_{Si} c_{Si1}), \quad j = 1, \dots, v_S \quad (5)$$

in which

$$\mu_{Sj} = \int_0^L m_S \phi_{Sj}^2 ds \quad (6)$$

and

$$\kappa_{Sj} = \mu_{Sj} \omega_{Sj}^2 \quad (7)$$

In Eq. (6), $m_S(s)$ is the mass distribution of S and in Eq. (7), the ω_{Sj} are the natural frequencies of S.

Equations (3) and (5) are $\nu_S + 1$ nonlinear ordinary differential equations (ODE) of the second order in the ν_S generalized coordinates of S , q_{Sj} , and the one generalized coordinate, $q_{\sigma 1}$, of σ .

III TWO DEGREE OF FREEDOM ELASTIC SYSTEM ATTACHED BY ONE NONLINEAR SPRING TO AN ELASTIC BEAM

See Fig. 3: Equations (1), (2) and Fig. 2 are still valid, so the EOM of S are again given by Eqs. (5).

A. Non-Modal Treatment of σ

EOM for σ (consisting of both masses and both springs) may be obtained by considering free body diagrams of the two masses and using Eqs. (1) and (2)

$$M_2 \ddot{q}_{\sigma 2} + k (q_{\sigma 2} - q_{\sigma 1}) = 0 \quad (8)$$

$$M_1 \ddot{q}_{\sigma 1} + f(q_{\sigma 1} - \sum_{i=1}^{\nu_S} c_{Si1} q_{Si}) - k(q_{\sigma 2} - q_{\sigma 1}) = 0 \quad (9)$$

Equations (5), (8) and (9) are $\nu_S + 2$ equations [all but Eq. (8) nonlinear] in the ν_S generalized coordinates q_{Si} and the two coordinates $q_{\sigma 1}$ and $q_{\sigma 2}$.

B. Modal Analysis

See Fig. 4: Equations (1), (2) and (5) still hold. σ now consists of the two masses and the elastic spring connecting them. Let $\underline{a}_{\sigma i}$, $i = 1, 2$, be the free-free modal vectors of σ (including one rigid body translational mode), ω_i be the corresponding natural frequencies (with $\omega_1 = 0$), and \underline{M}_{σ} be the mass matrix

$$\underline{M}_{\sigma} = \begin{bmatrix} M_1 & 0 \\ 0 & M_2 \end{bmatrix} \quad (10)$$

Further, let

$$\underline{A}_{\sigma} = [a_{\sigma 1}, a_{\sigma 2}] \quad (11)$$

be the principal mode matrix for σ ,

$$\underline{p}_\sigma = \underline{A}_\sigma \underline{q}_\sigma \quad (12)$$

in which

$$\underline{q}_\sigma = \begin{bmatrix} q_{\sigma 1} \\ q_{\sigma 2} \end{bmatrix} \quad (13)$$

and

$$\underline{F}_\sigma = \underline{\tilde{A}}_\sigma \underline{Q}_\sigma \quad (14)$$

where \sim denotes a transpose and

$$\underline{Q}_\sigma = \begin{bmatrix} -f(\delta) \\ 0 \end{bmatrix} = \begin{bmatrix} -f(q_{\sigma 1} - \sum_{i=1}^{v_S} c_{Si1} q_{Si}) \\ 0 \end{bmatrix} \quad (15)$$

The EOM of σ may now be written as

$$\underline{\mu}_\sigma \ddot{\underline{p}}_\sigma + \underline{\kappa}_\sigma \underline{p}_\sigma = \underline{F}_\sigma \quad (16)$$

in which

$$\underline{\kappa}_\sigma = \begin{bmatrix} \mu_1 \omega_1^2 & 0 \\ 0 & \mu_2 \omega_2^2 \end{bmatrix} \quad (17)$$

and $\underline{\mu}_\sigma$ is a 2 by 2 diagonal matrix given by

$$\underline{\mu}_\sigma = \underline{\tilde{A}}_\sigma \underline{M}_\sigma \underline{A}_\sigma \quad (18)$$

Equations (5) and (16) are $v_S + 2$ equations in the v_S normal coordinates q_{Si} and the two normal coordinates $p_{\sigma i}$.

IV ELASTIC BEAM ON AN ELASTIC BEAM

See Fig. 5: The displacements of S and σ may be expressed, respectively, as

$$d_S(s, t) = \sum_{i=1}^{v_S} q_{Si}(t) \phi_{Si}(s) \quad (19)$$

and

$$d_\sigma(s, t) = \sum_{j=1}^{v_\sigma} q_{\sigma j}(t) \phi_{\sigma j}(s) \quad (20)$$

in which ϕ_{Si} and $\phi_{\sigma j}$ are the free-free principal modes of S and σ , respectively, q_{Si} and $q_{\sigma j}$ are the corresponding generalized coordinates, and v_S and v_σ are the number of modes of S and σ used in the truncated series.

The shortenings of the nonlinear springs are then written as

$$\begin{aligned} \delta_1(t) = d_S(s_1, t) - d_\sigma(s_1, t) &= \sum_{i=1}^{v_S} q_{Si}(t) \phi_{Si}(s_1) - \sum_{j=1}^{v_\sigma} q_{\sigma j}(t) \phi_{\sigma j}(s_1) \\ &= \sum_{i=1}^{v_S} q_{Si} c_{Si1} - \sum_{j=1}^{v_\sigma} q_{\sigma j} c_{\sigma j1} \end{aligned} \quad (21)$$

$$\delta_2 = \sum_{i=1}^{v_S} q_{Si} c_{Si2} - \sum_{j=1}^{v_\sigma} q_{\sigma j} c_{\sigma j2} \quad (22)$$

in which

$$c_{\sigma j i} = \phi_{\sigma j}(s_i), \quad i = 1, 2 \quad (23)$$

The dynamic reactions of σ on S and vice versa are illustrated in Fig. 6. It follows that the EOM of S and σ are

$$\mu_{Si} \ddot{q}_{Si} + \kappa_{Si} q_{Si} = f_1(\delta_1) c_{Si1} + f_2(\delta_2) c_{Si2} \quad (24)$$

$$\mu_{\sigma j} \ddot{q}_{\sigma j} + \kappa_{\sigma j} q_{\sigma j} = -f_1(\delta_1) c_{\sigma j1} - f_2(\delta_2) c_{\sigma j2} \quad (25)$$

in which δ_1 and δ_2 are given by Eqs. (21) and (22). Equations (24) and (25) are a set of $\nu_S + \nu_\sigma$ coupled second order ordinary nonlinear differential equations in the same number of generalized coordinates q_{Si} and $q_{\sigma j}$,
 $i = 1 \rightarrow \nu_S$, $j = 1 \rightarrow \nu_\sigma$

V CONCLUDING REMARKS

In Ref. [2], the procedure outlined in Ref. [1] and described in detail for particular attachments σ , is generalized for arbitrary internal structures. Similarly, the equations and examples exhibited in the present report will appear as special cases in Ref. [3].

REFERENCES

- [1] D. Ranlet, F.L. DiMaggio, H.H. Bleich and M.L. Baron, "Elastic Response of Submerged Shells with Internally Attached Structures to Shock Loading", Int. J. Computers and Structures, Vol. 7 (1977), pp. 355-364.
- [2] D. Ranlet and F.L. DiMaggio, "Transient Response of Shells with Internally Attached Structures", Technical Report No. 21, Weidlinger Associates, Office of Naval Research, Contract N00014-72-C-0119, in preparation.
- [3] J. Klosner, "Transient Response of Structures by Use of Component Modes", Technical Report No. 22, Weidlinger Associates, Office of Naval Research, Contract N00014-72-C-0119, in preparation.

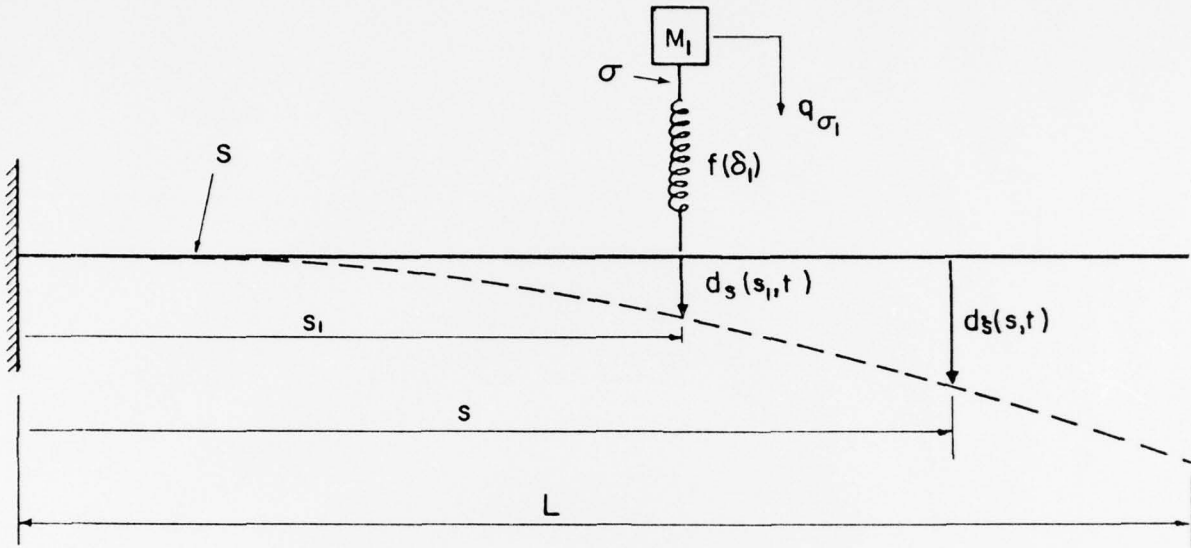


FIG. 1

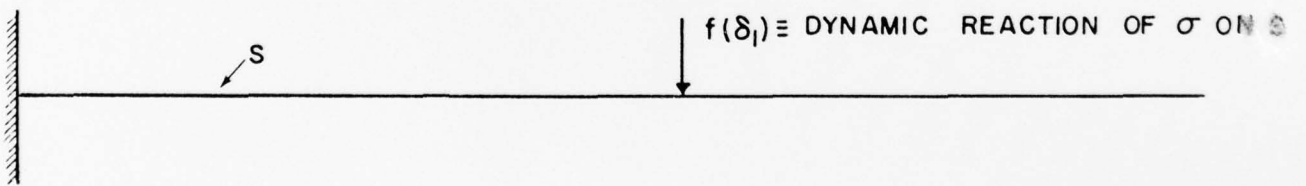


FIG. 2

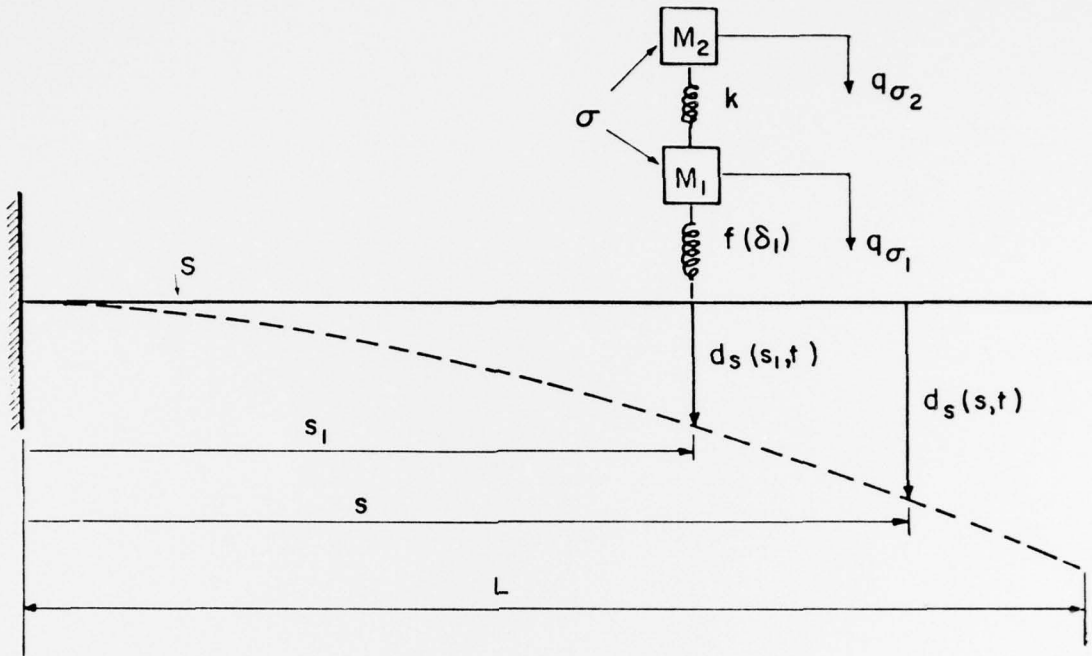


FIG. 3

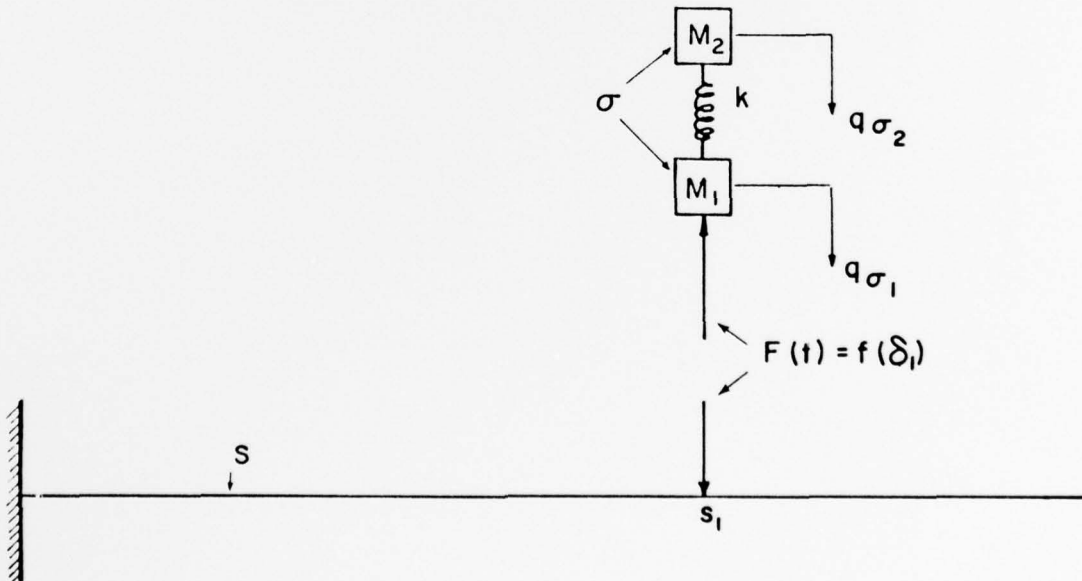


FIG. 4

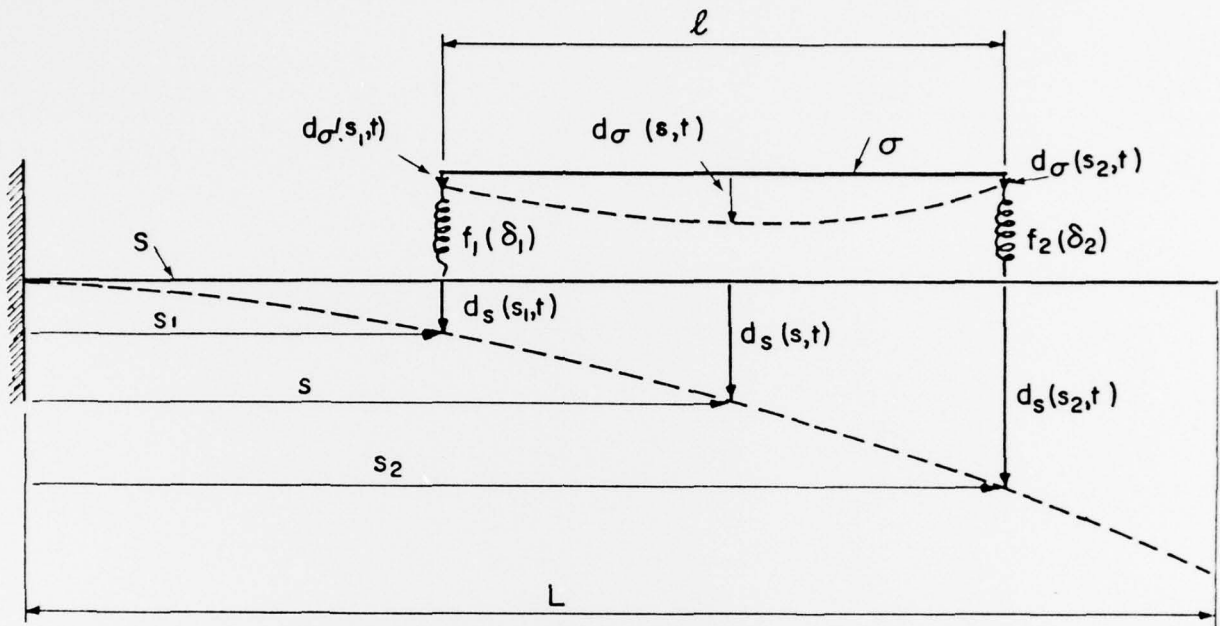


FIG. 5

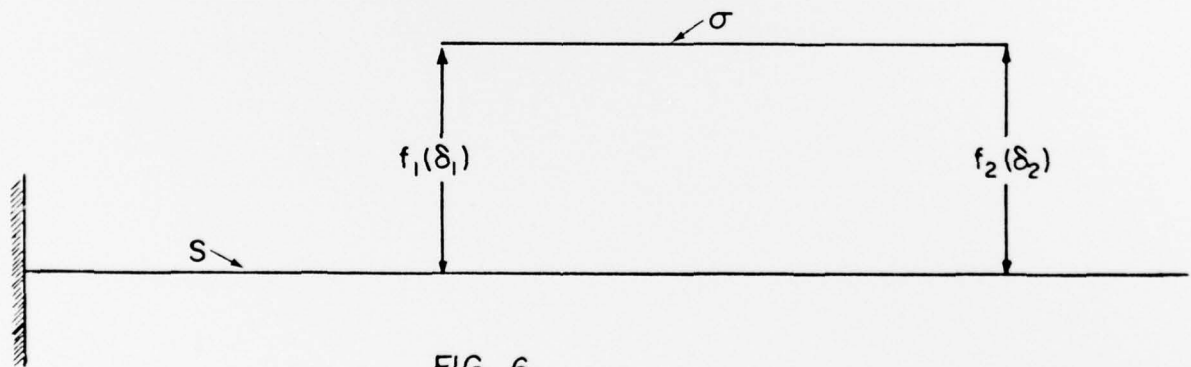


FIG. 6

PAGE 1

BEST AVAILABLE COPY

ASSISTANT TO THE SECRETARY DEFENSE
ATOMIC ENERGY
WASHINGTON, DC 20301
ATTN DONALD COTTER

DIRECTOR
DEFENSE ADVANCED RESEARCH PROJECT AGENCY
ARCHITECT BUILDING
1400 WILSON BLVD.
ARLINGTON, VA 22209
ATTN A. TACHMINDJI
ATTN STO KENT KRESA
ATTN TECHNICAL LIBRARY
ATTN R. CHAPMAN

DEFENSE DOCUMENTATION CENTER
CAMERON STATION
ALEXANDRIA, VA 22314
ATTN TECHNICAL LIBRARY

(3 COPIES)

DIRECTOR
DEFENSE INTELLIGENCE AGENCY
WASHINGTON, DC 20301
ATTN DI-7D E. OFARRELL
ATTN DI-7E
ATTN DT-1C J. VERONA
ATTN DT-2 (WEAPONS&SYSTEMS DIVISION)
ATTN TECHNICAL LIBRARY

DEFENSE NUCLEAR AGENCY
WASHINGTON, DC 20305
ATTN STTL TECHNICAL LIBRARY
ATTN STST ARCHIVES
ATTN DDST
ATTN SPSS

(2 COPIES)

(2 COPIES)

PAGE 2

BEST AVAILABLE COPY

CHAIRMAN
DEPARTMENT OF DEFENSE EXPLOSION
SAFETY BOARD
RM-GR270, FORRESTAL BUILDING
WASHINGTON DC 20301
ATTN DD/S+SS

DIRECTOR OF DEFENSE RESEARCH&ENGINEERING
WASHINGTON DC 20301
ATTN AD/SW
ATTN DD/TWP
ATTN DD/S+SS
ATTN AD/NP

COMMANDER
FIELD COMMAND
DEFENSE NUCLEAR AGENCY
KIRTLAND AIR FORCE BASE
ALBUQUERQUE, NM 87117
ATTN FCTA
ATTN FCTA-D

INTERSERVICE NUCLEAR WEAPONS SCHOOL
KIRTLAND AIR FORCE BASE
ALBUQUERQUE, NM 87117
ATTN TECH LIB

DIRECTOR
JOINT STRATEGIC TARGET
PLANNING STAFF JCS
OFFUTT AIR FORCE BASE
OMAHA, NB 68113
ATTN STINFO LIBRARY

WEAPONS SYSTEMS EVALUATION GROUP
400 ARMY NAVY DRIVE
ARLINGTON VA 22202
ATTN DOC CON

BEST AVAILABLE COPY

CHIEF OF RESEARCH, DEVELOPMENT AND
ACQUISITION
DEPARTMENT OF THE ARMY
WASHINGTON DC 20310
ATTN TECHNICAL LIBRARY
ATTN DAMA-CSM-N LTC E. DEBOESER JR

COMMANDER
HARRY DIAMOND LABORATORIES
WASHINGTON, DC 20438
ATTN AMXDO-NP
ATTN AMXDO-TI TECH LIB

DIRECTOR
U S ARMY BALLISTIC RESEARCH LABORATORIES
ABERDEEN PROVING GROUND, MD 21005
ATTN TECH LIB E. BAICY

COMMANDER
U S ARMY COMM COMMAND
FORT HUACHUCA, AZ 85613
ATTN TECHNICAL LIBRARY

COMMANDER
U. S. ARMY MATERIAL & MECHANICS
RESEARCH CENTER
WATERTOWN, MA 02172
ATTN R SHEA

COMMANDER
U S ARMY NUCLEAR AGENCY
FORT BLISS, TX 79916
ATTN TECH LIB

PAGE 4

BEST AVAILABLE COPY

COMMANDER
U S ARMY WEAPONS COMMAND
ROCK ISLAND ARSENAL
ROCK ISLAND, IL 61201
ATTN TECHNICAL LIBRARY

CHIEF OF NAVAL MATERIAL
DEPARTMENT OF THE NAVY
WASHINGTON, DC 20360
ATTN MAT 0323

CHIEF OF NAVAL OPERATIONS
DEPARTMENT OF THE NAVY
WASHINGTON, DC 20350
ATTN OP 03FG
ATTN OP 985F

CHIEF OF NAVAL RESEARCH
DEPARTMENT OF THE NAVY
ARLINGTON VA 22217
ATTN N PERRONE CD 474
ATTN TECHNICAL LIBRARY

(5 COPIES)

OFFICER IN CHARGE
CIVIL ENGINEERING LABORATORIES
NAVAL CONSTRUCTION BATTALION CENTER
PORT HUENEME CA 93041
ATTN R ODELLO
ATTN TECHNICAL LIBRARY

COMMANDER
NAVAL ELECTRONIC SYSTEMS COMMAND
NAVAL ELECTRONIC SYSTEMS COMMAND HQS
WASHINGTON, DC 20360
ATTN PME 117-21A

BEST AVAILABLE COPY

COMMANDER
NAVAL FACILITIES ENGINEERING COMMAND
HEADQUARTERS
WASHINGTON, DC 20390
ATTN TECHNICAL LIBRARY

SUPERINTENDENT
NAVAL POSTGRADUATE SCHOOL
MONTEREY CA 93940
ATTN CODE 2124 TECH RPTS LIBRARIAN

DIRECTOR
NAVAL RESEARCH LABORATORY
WASHINGTON DC 20375
ATTN CODE 2027 TECHNICAL LIBRARY
ATTN CODE 840 J GREGORY
ATTN CODE 8440 F ROSENTHAL
ATTN CODE 8403A G OHARA
ATTN CODE 8442 H HUANG

NKF ENGINEERING ASSOCIATES, INC.
8720 GEORGIA AVENUE
SUITE 803
SILVER SPRING, MD 20910
ATTN. DR. ROBERT O. BELSHEIM

COMMANDER
NAVAL SEA SYSTEMS COMMAND
DEPARTMENT OF THE NAVY
WASHINGTON, DC 20362
ATTN ORD - 91313 LIB
ATTN CODE 03511 C POHLER

NAVAL SHIP RESEARCH & DEVELOPMENT CENTER
UNDERSEA EXPLOSIONS RESEARCH DIVISION
PORTSMOUTH VA 23709
ATTN E PALMER
ATTN TECHNICAL LIBRARY

BEST AVAILABLE COPY

COMMANDER
NAVAL SHIP ENGINEERING CENTER
DEPARTMENT OF THE NAVY
WASHINGTON, DC 20362
ATTN NSEC 6120D
ATTN NSEC 6110.01
ATTN NSEC 6105G
ATTN NSEC 6105
ATTN 6105C1
ATTN TECHNICAL LIBRARY

COMMANDER
DAVID W. TAYLOR
NAVAL SHIP RESEARCH & DEVELOPMENT CENTER
BETHESDA MD 20034
ATTN CODE 17 WW MURRAY
ATTN CODE 142-3 LIBRARY
ATTN CODE 174 R SHORT
ATTN CODE 11
ATTN CODE 2740 Y WANG
ATTN CODE 1962
ATTN CODE 1903
ATTN CODE 1731C
ATTN CODE 1171
ATTN CODE 19

COMMANDER
NAVAL SURFACE WEAPONS CENTER
WHITE OAK
SILVER SPRING MD 20910
ATTN CODE 241 J PETES
ATTN CODE 1224 NAVY NUC PRGMS OFF
ATTN CODE 730 TECH LIB
ATTN CODE 240 H SNAY
ATTN CODE 243 G YOUNG

COMMANDER
NAVAL SURFACE WEAPONS CENTER
DAHLGREN LABORATORY
DAHLGREN VA 22448
ATTN TECHNICAL LIBRARY

BEST AVAILABLE COPY

COMMANDER
NAVAL UNDERSEA CENTER
SAN DIEGO, CA 92152
ATTN TECHNICAL LIBRARY

COMMANDER
NAVAL WEAPONS CENTER
CHINA LAKE CA 93555
ATTN CODE 533 TECH LIB

COMMANDING OFFICER
NAVAL WEAPONS EVALUATION FACILITY
KIRTLAND AIR FORCE BASE
ALBUQUERQUE NM 87117
ATTN TECHNICAL LIBRARY

DIRECTOR
STRATEGIC SYSTEMS PROJECTS OFFICE
DEPARTMENT OF THE NAVY
WASHINGTON DC 20376
ATTN NSP-272
ATTN NSP-43 TECH LIBRARY

AIR FORCE CAMBRIDGE RESEARCH
LABORATORIES, AFSC
L.G. HANSCOM FIELD
BEDFORD MA 01730
ATTN SUOL AFCRL RSCH LIB

HEADQUARTERS
AIR FORCE SYSTEMS COMMAND
ANDREWS AIR FORCE BASE
WASHINGTON DC 20331
ATTN TECHNICAL LIBRARY

BEST AVAILABLE COPY

COMMANDER
ARMAMENT DEVELOPMENT&TEST CENTER
ELGIN AFB FL 32542
ATTN TECHNICAL LIBRARY

LOS ALAMOS SCIENTIFIC LABORATORY
P O BOX 1663
LOS ALAMOS NM 87544
ATTN DOC CONTROL FOR REPORTS LIBRARY

LIVERMORE LABORATORIES
P O BOX 969
LIVERMORE CA 94550
ATTN DOC CON FOR TECH LIBRARY

SANDIA LABORATORIES
P.O. BOX 5800
ALBUQUERQUE NM 87115
ATTN DOC CON FOR 3141 SANDIA RPT COLL

U. S. ENERGY RESEARCH&DEVELOPMENT ADMIN.
DIVISION OF HEADQUARTERS SERVICES
LIBRARY BRANCH G-043
WASHINGTON DC 20545
ATTN DOC CONTROL FOR CLASS TECH LIB

LAWRENCE LIVERMORE LABORATORIES
P.O. BOX 808
LIVERMORE CA 94550
ATTN TECHNICAL LIBRARY

AGRARIAN ASSOCIATES
250 NORTH NASH STREET
EL SUGONDO CA 90245
ATTN M AGRARIAN

BATTELLE MEMORIAL INSTITUTE
505 KING AVENUE
COLUMBUS OH 43201
ATTN TECHNICAL LIBRARY

BELL TELEPHONE LABORATORIES INC.
MOUNTAIN AVE
MURRAY HILL NJ 07974
ATTN TECHNICAL REPORT CENTER

BOEING COMPANY
P.O. BOX 3707
SEATTLE WA 98124
ATTN AEROSPACE LABORATORY

CAMBRIDGE ACOUSTICAL ASSOCIATION
1033 MASSACHUSETTS AVENUE
CAMBRIDGE MA 02138
ATTN M JUNGER

CIVIL / NUCLEAR SYSTEMS CORPORATION
1200 UNIVERSITY N. F.
ALBUQUERQUE NM 87102
ATTN T DUFFY

ELECTRIC BOAT DIVISION
GENERAL DYNAMICS CORPORATION
GROTON CN 06340
ATTN L. CHEN

GENERAL ELECTRIC COMPANY
TEMPO-CENTER FOR ADVANCED STUDIES
816 STATE STREET (P.O. DRAWER QQ)
SANTA BARBARA CA 93102
ATTN DASIAC

ITT RESEARCH INSTITUTE
10 WEST 35TH STREET
CHICAGO IL 60616
ATTN TECHNICAL LIBRARY

INSTITUTE FOR DEFENSE ANALYSIS
400 ARMY NAVY DRIVE
ARLINGTON VA 22202
ATTN IDA LIBRARIAN R SMITH

J.L. MERRITT
CONSULTING AND SPECIAL ENGINEERING
SERVICES, INC.
P.O. BOX 1206
REDLANDS CA 92373
ATTN TECHNICAL LIBRARY

KAMAN AVIDYNE
DIV OF KAMAN SCIENCES CORPORATION
83 SECOND AVENUE
NW INDUSTRIAL PARK
BURLINGTON MA 01803
ATTN E CRISCIONE
ATTN TECHNICAL LIBRARY
ATTN G ZARTARIAN

KAMAN SCIENCES CORPORATION
P.O. BOX 7463
COLORADO SPRINGS CO 80933
ATTN TECHNICAL LIBRARY

LOCKHEED MISSILES AND SPACE COMPANY
3251 HANOVER STREET
PALO ALTO CA 94304
ATTN TECH INFO CTR D/COLL
ATTN T GEERS D/52-33 BLDG 205

NATHAN M. NEWMARK
CONSULTING ENGINEERING SERVICES
1114 CIVIL ENGINEERING BUILDING
URBANA IL 61801
ATTN N NEWMARK

POLYTECHNIC INSTITUTE OF NEW YORK
DEPARTMENT OF MECHANICAL AND
AEROSPACE ENGINEERING
333 JAY STREET
BROOKLYN NY 11201
ATTN J KLOSNER

R+D ASSOCIATES
P. O. BOX 9695
MARINA DEL RAY, CA 90291
ATTN TECHNICAL LIBRARY

STANFORD RESEARCH INSTITUTE
333 RAVENSWOOD AVENUE
MENLO PARK CA 94025
ATTN SRT LIB ROOM G021
ATTN R GASTEN
ATTN G ABRAHAMSON

TETRA TECH INC.
630 N ROSEMEAD BLVD
PASADENA CA 91107
ATTN LI-SAN HWANG
ATTN TECH LIB

THE RDM CORPORATION
1920 ALINE AVENUE
VIENNA VA 22180
ATTN TECHNICAL LIBRARY

UNIVERSITY OF MARYLAND
DEPARTMENT OF CIVIL ENGINEERING
COLLEGE PARK MD 20742
ATTN R BERGER

URS RESEARCH COMPANY
155 ROVET ROAD
SAN MATEO CA 94402
ATTN TECHNICAL LIBRARY

ASSISTANT CHIEF FOR TECHNOLOGY
OFFICE OF NAVAL RESEARCH
ARLINGTON, VA 22217
ATTN CODE 200

DR. AZRIEL HARARI/3B 311
NAVAL UNDERWATER SYSTEMS COMMAND
NEWPORT, RI 02840

TELEDYNE BROWN ENGINEERING
MAIL STOP 44
300 SPARKMAN DRIVE
RESEARCH PARK
HUNTSVILLE, AL 35807
ATTN DR. MANU PATEL

DIRECTOR
U.S. ARMY WATERWAYS EXPERIMENT STATION
P.O. BOX 631
VICKSBURG MS 39180
ATTN J STRANGE
ATTN W FLATHAU
ATTN TECH LIB (UNCL ONLY)

PAGE 13

BEST AVAILABLE COPY

AIR FORCE INSTITUTE OF TECHNOLOGY, AU
WRIGHT PATTERSON AFB, OH 45433
ATTN LIB AFIT BLDG 640 AREA B (UNCL ONLY)

WEIDLINGER ASSOCIATES
3000 SAND HILL ROAD
BUILDING 4 SUITE 245
MENLO PARK CA 94025
ATTN J. ISENBERG

WEIDLINGER ASSOCIATES
110 EAST 59TH STREET
NEW YORK, NY 10022
ATTN DR. M. L. BARON

(5 COPIES)

UNCLASSIFIED

SECURITY CLASSIFICATION OF THIS PAGE (When Data Entered)

REPORT DOCUMENTATION PAGE		READ INSTRUCTIONS BEFORE COMPLETING FORM
1. REPORT NUMBER	2. GOVT ACCESSION NO.	3. RECIPIENT'S CATALOG NUMBER (9)
4. TITLE (and Subtitle) Dynamic Response of a Submerged Elastic Structure with Elastic Structures Attached to It by Inelastic Springs*		5. TYPE OF REPORT & PERIOD COVERED Technical Note
7. AUTHOR(s) F.L. DiMaggio		6. PERFORMING ORG. REPORT NUMBER
9. PERFORMING ORGANIZATION NAME AND ADDRESS Weidlinger Associates 110 East 59th Street New York, New York 10022		8. CONTRACT OR GRANT NUMBER(s) (15) N00014-72-C-0119
11. CONTROLLING OFFICE NAME AND ADDRESS Office of Naval Research 800 North Quincy Street Arlington, Virginia 22217		10. PROGRAM ELEMENT, PROJECT, TASK AREA & WORK UNIT NUMBERS 61153N 44 023-03 064464
14. MONITORING AGENCY NAME & ADDRESS (if different from Controlling Office) (12) 150.		12. REPORT DATE (11) August 1977
		13. NUMBER OF PAGES 12
		15. SECURITY CLASS. (of this report) UNCLASSIFIED
		15a. DECLASSIFICATION/DOWNGRADING SCHEDULE
16. DISTRIBUTION STATEMENT (of this Report) Approved for public release; distribution unlimited.		
17. DISTRIBUTION STATEMENT (of the abstract entered in Block 20, if different from Report)		
18. SUPPLEMENTARY NOTES		
19. KEY WORDS (Continue on reverse side if necessary and identify by block number) Dynamic Response Internal Structure Inelastic Mountings Submerged Shell		
20. ABSTRACT (Continue on reverse side if necessary and identify by block number) A procedure is described which may be used to obtain the dynamic response to shock loading of a submerged shell with internal structure attached to it by nonlinear mountings.		

DD FORM 1473
1 JAN 73

EDITION OF 1 NOV 65 IS OBSOLETE
S/N 0102-014-6601

UNCLASSIFIED

SECURITY CLASSIFICATION OF THIS PAGE (When Data Entered)

373 050

JP