

AD-A046 481

STANFORD UNIV CALIF DEPT OF COMPUTER SCIENCE
TIME-SPACE TRADE-OFFS IN A PEBBLE GAME, (U)
JUL 77 W J PAUL, R E TARJAN

F/G 12/1

UNCLASSIFIED

STAN-CS-77-619

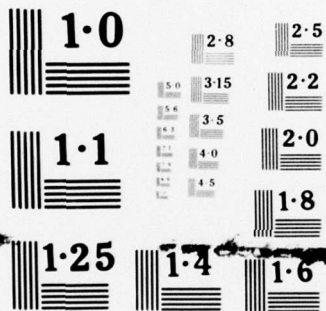
N00014-76-C-0688

NL

| OF |
ADA
046481



END
DATE
FILMED
12-77
DDC



NATIONAL BUREAU OF STANDARDS
MICROCOPY RESOLUTION TEST CHART

AD A046481

AD No.
DDC FILE COPY

6 TIME-SPACE TRADE-OFFS IN A PEBBLE GAME,

by

10 W. J./Paul R. E./Tarjan

14 STAN-CS-77-619

11 JUL 1977

12 10 p.

15 N00014-76-C-0688,
✓NSF-MCS-75-22870

COMPUTER SCIENCE DEPARTMENT
School of Humanities and Sciences
STANFORD UNIVERSITY

DDC
RECEIVED
NOV 15 1977



094 120

DISTRIBUTION STATEMENT A
Approved for public release;
Distribution Unlimited

TIME-SPACE TRADE-OFFS IN A PEBBLE GAME

W. J. Paul ^{*/}
Fakultät für Mathematik
der Universität Bielefeld
D-4800 Bielefeld 1
Germany

R. E. Tarjan ^{**/}
Computer Science Department
Stanford University
Stanford, California 94305
USA

Abstract

A certain pebble game on graphs has been studied in various contexts as a model for the time and space requirements of computations [1,2,3,8].

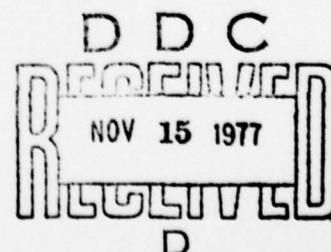
In this note it is shown that there exists a family of directed acyclic graphs G_n and constants c_1, c_2, c_3 such that

- (1) G_n has n nodes and each node in G_n has indegree at most 2.
- (2) Each graph G_n can be pebbled with $c_1 \sqrt{n}$ pebbles in n moves.
- (3) Each graph G_n can also be pebbled with $c_2 \sqrt{n}$ pebbles, $c_2 < c_1$, but every strategy which achieves this has at least $2^{c_3 \sqrt{n}}$ moves.

ACCESSION for	
NTIS	White Section <input checked="" type="checkbox"/>
DOC	Buff Section <input type="checkbox"/>
UNANNOUNCED	<input type="checkbox"/>
JUSTIFICATION	
BY	
DISTRIBUTION/AVAILABILITY CODES	
Dist.	AVAIL. and/or SPECIAL
A	

^{*/} Research partially supported by DAAD (German Academic Exchange Service)
Grant No. 430/402/653/5.

^{**/} Research partially supported by the National Science Foundation,
Grant No. MCS 75-22870 and by the Office of Naval Research,
Contract No. N00014-76-C-0688



Let $S(k,n)$ be the set of all directed acyclic graphs with n nodes where each node has indegree at most k . On graphs $G \in S(n,k)$ the following one person game is considered. The game is played by putting pebbles on the nodes of G according to the following rules:

- (i) an input node (i.e., a node without a predecessor) can always be pebbled;
- (ii) if all immediate predecessors of a node c have pebbles one can put a pebble on c ;
- (iii) one can always remove a pebble from a node.

The goal of the game is to put a pebble on some output node (i.e., a node without a successor) of G in such a way that the total number of pebbles which are simultaneously on the graph is minimized.

The game models the time and space requirements of computations in the following sense. The nodes of G correspond to operations and the pebbles correspond to storage locations. If a pebble is on a node this means that the result of the operation to which the node corresponds is stored in some storage location. Thus the rules have the following meaning:

- (i) input data are always accessible;
- (ii) if all operands of an operation are known and stored somewhere, the operation can be carried out and the result be stored in a new location;
- (iii) storage locations can always be freed.

By the rules a single node can be pebbled many times. This corresponds to recomputation of intermediate results.

In particular the game has been used to model time and space of Turing machines [1,2] as well as length and storage requirements for straight line programs [8].

Known results about the pebble game include

- A: Every graph $G \in S(k,n)$ can be pebbled with $c_k n / \log n$ pebbles where the constant c_k depends only on k [2].
- B: There is a constant c and a family of graphs $G_n \in S(2,n)$ such that for infinitely many n , G_n cannot be pebbled with less than $cn / \log n$ pebbles [4].

For more results see [1,3,4,7,8].

By putting pebbles on the nodes of a graph G in topological order (i.e., if there is an edge from node c to node c' , then c is pebbled first) one can pebble each graph $G \in S(k,n)$ with n pebbles and n moves. However the strategy known to achieve $O(n / \log n)$ pebbles on every graph uses exponential time. Thus it is a natural question to ask if there are graphs $G_n \in S(k,n)$ such that every strategy which achieves a minimal number of pebbles requires necessarily exponential time. This is indeed the case.

Theorem. There exists a family of graphs $G_n \in S(2,n)$, $n = 1,2,\dots$ and constants c_1, c_2, c_3 , $c_2 < c_1$ such that for infinitely many n

- (1) G_n can be pebbled with $c_1 \sqrt{n}$ pebbles in n moves.
- (2) G_n can also be pebbled with $c_2 \sqrt{n}$ pebbles.
- (3) Every strategy which pebbles G_n using only $c_2 \sqrt{n}$ pebbles has at least $2^{c_3 \sqrt{n}}$ moves.

Thus saving only a constant fraction of the pebbles forces the time required to grow from linear to exponential.

Proof of the theorem: As building blocks for the graphs G_n we need certain special graphs. A directed bipartite graph is a graph whose nodes can be partitioned into two disjoint sets N_1, N_2 such that all edges lead from nodes in N_1 to nodes in N_2 . A directed bipartite graph is an n - i/j -expander if $|N_1| = |N_2| = n$ ($|A|$ denotes the cardinality of A) and for all subsets N' of N_2 of size n/j the following holds:

$$|\{c \mid c \in N_1 \text{ and there is an edge from } c \text{ to a node in } N'\}| > n/j.$$

Lemma 1. For n large enough there exist $n^{8/2}$ -expanders where the indegree of each node in N_2 is exactly 16.

Proof. With every function $f: \{1, \dots, cn\} \rightarrow \{1, \dots, n\}$ we associate a bipartite graph $G_f \in \mathcal{B}(c, 2n)$ with n inputs and n outputs in the following way: The inputs and outputs are numbered from 1 to n and if $f(j) = i$ then there is an edge from input i to output $(j \bmod n)$. Different functions may produce the same graph. A function f is bad if there is a set I of $n/2$ inputs and a set O of $n/8$ outputs such that all edges into O come from I . Otherwise the function f is called good. Clearly if f is good G_f is an $n^{8/2}$ -expander with the desired properties.

In order to prove the existence of a good function we prove that the fraction of bad functions to all such functions tends with growing n to zero [5,6].

There are n^{cn} functions $f: \{1, \dots, cn\} \rightarrow \{1, \dots, n\}$. There are $\binom{n}{n/2} \binom{n}{n/8}$ ways to choose $n/2$ inputs I and $n/8$ outputs O . For every choice of I and O there are $(n/2)^{cn/8} \cdot n^{7cn/8}$ functions f such that f is bad because in G_f all edges into O come from I .

Hence there are at most $\binom{n}{n/2} \binom{n}{n/8} \cdot (n/2)^{cn/8} \cdot n^{7cn/8}$ bad functions.

Thus the fraction we want to estimate is

$$\begin{aligned} & \binom{n}{n/2} \binom{n}{n/8} \cdot (n/2)^{cn/8} \cdot n^{7cn/8} / n^{cn} \\ &= \binom{n}{n/2} \binom{n}{n/8} / 2^{cn/8} = o(1) \quad \text{for } c \geq 16. \quad \square \end{aligned}$$

Let E'_n be an $n^{8/2}$ -expander as in Lemma 1. Construct E_n from E'_n by replacing for every output node v the 16 incoming edges by a complete binary tree with 16 leaves, identifying v with the root of the tree and the predecessors of v with the leaves. Obviously $E_n \in S(2, 16n)$.

Let $H_{b,d}$ be the graph consisting of d copies of E_b : E_b^1, \dots, E_b^d where for $2 \leq i \leq d$, the input nodes of E_b^i are identified with the output nodes of E_b^{i-1} . Thus $H_{b,d} \in S(2, (15d+1)b)$.

The set of output nodes of E_b^i is called the i -th level. The input nodes of E_b^1 form level 0.

Lemma 2. $H_{b,d}$ can be pebbled with $2b+16$ pebbles and $(15d+1)b$ moves.

Proof. We say level i is full if all nodes of level i have pebbles. The strategy is to fill the levels one after another. Each level is a cut set. Thus once a new level i has been filled all pebbles above level i can be removed. Hence at most $2b$ pebbles have to be kept on two successive levels. In the process of filling level $i+1$ if level i is full, the 16 extra pebbles are used on the trees between the levels. Because all trees are disjoint except for the leaves each node is pebbled exactly once. \square

Lemma 3. $H_{b,d}$ can be pebbled with $4d+2$ pebbles.

Proof. The depth of a node v is the number of edges in the longest path into v . In a graph $G \in S(2,n)$ every node of depth t can be pebbled with $t+2$ pebbles (this follows easily by induction on t).

Every node in $H_{b,d}$ has depth at most $4d$. \square

The crucial point is

Lemma 4. For all $i \in \{0,1,\dots,d\}$ the following statement holds: If C is any configuration of at most $b/8$ pebbles on $H_{b,d}$, N is any subset of level i s.t. $|N| = b/4$, and M is any sequence of moves, which starts in configuration C , never uses more than $b/8$ pebbles, and during the execution of this sequence of moves each node in N has a pebble at least once, then M has at least 2^i moves.

Proof. By induction on i . For $i = 0$ there is nothing to prove. Suppose the lemma is true for $i-1$. In configuration C at most $b/8$ pebbles are on the graph. Thus for at least $b/8$ of the nodes v in N , no pebble is on v nor anywhere on the tree which joins v with level $i-1$ except possibly on the leaves. Let N' be a subset of these nodes of size $b/8$ and let P be the set of nodes in level $i-1$ which are connected to N' . By construction of $H_{b,d}$, $|P| \geq b/2$. Because none of the nodes in N' nor any node of their trees have pebbles except for the leaves, during the execution of M each node in P must have a pebble at some time (possibly right at the start).

Divide the strategy M into two parts M_1, M_2 at the earliest move such that during M_1 some $b/4$ nodes of P have or have had pebbles and the remaining $b/4$ or more nodes of P have never had a pebble.

For M_1 the hypothesis of the lemma applies; thus M_1 has at least 2^{i-1} moves. Because M_1 leaves at most $b/8$ pebbles on the graph and M_2 also never uses more than $b/8$ pebbles the hypothesis also applies to M_2 . Hence M_2 has at least 2^{i-1} moves too and the lemma follows. \square

Choose b such that $4d+2 \leq b/8$, e.g. $b = 32d+16$. Then any strategy which pebbles any $b/4$ output nodes of $H_{b,d}$ using at most $4d+2$ pebbles has at least 2^d moves. Thus for at least one of these nodes v pebbling v alone with $4d+2$ pebbles must require $2^d/(b/4) \geq 2^{(1-\epsilon)d}$ moves since $b = O(d)$. Now $n = (15d+1)b$ is the number of nodes of $H_{b,d}$. Hence $d = O(\sqrt{n})$ and $b = O(\sqrt{n})$ and the theorem follows. \square

The above construction also yields:

Corollary. There exists a family of graphs $G_n \in S(2,n)$ such that for every $\epsilon > 0$ the following holds: any strategy which pebbles G_n using $n^{1-\epsilon}$ pebbles has more than polynomially many moves.

Proof. Choose $G_n = H_{b,d}$ with $b = n^{1-1/\log \log n}$ and $d = O(n^{1/\log \log n})$. \square

An interesting open problem is: does there exist a family of graphs $G_n \in S(2,n)$, $n = 1, 2, \dots$ such that pebbling the graphs G_n with $O(n/\log n)$ pebbles requires more than polynomially many moves? As a first step toward resolving this question, Pippenger [7] has exhibited a family of graphs which require a non-linear number of moves when pebbled with $O(n/\log n)$ pebbles.

References

- [1] S. A. Cook, "An observation on time-storage trade off," Proceedings Fifth Annual ACM Symp. on Theory of Computing (1973), 29-33.
- [2] J. Hopcroft, W. Paul, and L. Valiant, "On time versus space and related problems," Journal ACM, to appear.
- [3] M. S. Paterson and C. E. Hewitt, "Comparative schematology," Record of Project MAC Conference on Concurrent Systems and Parallel Computation (1970), 119-128.
- [4] W. Paul, R. E. Tarjan, and J. R. Celoni, "Space bounds for a game on graphs," Math. Systems Theory, to appear.
- [5] M. S. Pinsker, "On the complexity of a concentrator," 7th International Teletraffic Congress, Stockholm (1973).
- [6] N. Pippenger, "Superconcentrators," Technical Report, IBM Thomas J. Watson Research Center, Yorktown Heights, N. Y., (1976).
- [7] N. Pippenger, "A time-space trade off," Technical Report, IBM Thomas J. Watson Research Center, Yorktown Heights, N. Y., (1977).
- [8] R. Sethi, "Complete register allocation problems," SIAM J. Comput. 4 (1975), 226-248.

Unclassified

SECURITY CLASSIFICATION OF THIS PAGE (When Data Entered)

REPORT DOCUMENTATION PAGE		READ INSTRUCTIONS BEFORE COMPLETING FORM
1. REPORT NUMBER STAN-CS-77-619 ✓	2. GOVT ACCESSION NO.	3. RECIPIENT'S CATALOG NUMBER
4. TITLE (and Subtitle) TIME-SPACE TRADE-OFFS IN A PEBBLE GAME ✓		5. TYPE OF REPORT & PERIOD COVERED Technical, July 1977
7. AUTHOR(s) W. J. Paul and R. E. Tarjan		6. PERFORMING ORG. REPORT NUMBER STAN-CS-77-619 ✓
9. PERFORMING ORGANIZATION NAME AND ADDRESS Stanford University Computer Science Department Stanford, Ca. 94305		8. CONTRACT OR GRANT NUMBER(s) ONR N00014-76-C-0688
11. CONTROLLING OFFICE NAME AND ADDRESS Office of Naval Research Department of the Navy Arlington, Va. 22217		10. PROGRAM ELEMENT, PROJECT, TASK AREA & WORK UNIT NUMBERS
14. MONITORING AGENCY NAME & ADDRESS (if different from Controlling Office) ONR Representative: Phillip Surra Durand Aeronautics Bldg., Rm. 165 Stanford University Stanford, Ca. 94305		12. REPORT DATE July 1977
16. DISTRIBUTION STATEMENT (of this Report) Releasable without limitations on dissemination		13. NUMBER OF PAGES 8
		15. SECURITY CLASS. (of this report) Unclassified
		15a. DECLASSIFICATION/DOWNGRADING SCHEDULE
17. DISTRIBUTION STATEMENT (of the abstract entered in Block 20, if different from Report)		
18. SUPPLEMENTARY NOTES		
19. KEY WORDS (Continue on reverse side if necessary and identify by block number)		
20. ABSTRACT <p>A certain pebble game on graphs has been studied in various contexts as a model for the time and space requirements of computations [1,2,3,4]. In this note it is shown that there exists a family of directed acyclic graphs G_n and constants c_1, c_2, c_3 such that</p> <p>(1) G_n has n nodes and each node in G_n has indegree at most 2.</p> <p>(2) Each graph G_n can be pebbled with $c_1 \sqrt{n}$ pebbles in n moves, and</p> <p>(3) Each graph G_n can also be pebbled with $c_2 \sqrt{n}$ pebbles, $c_2 < c_1$,</p> <p>but every strategy which achieves this has at least $c_3 \sqrt{n}$ moves.</p>		

DISTRIBUTION STATEMENT A

Approved for public release;
Distribution Unlimited

DD FORM 1473

EDITION OF 1 NOV 65 IS OBSOLETE

Unclassified

SECURITY CLASSIFICATION OF THIS PAGE (When Data Entered)

2 to the power $(c(3) \lg n)$