

AD-A045 626

PRINCETON UNIV N J DEPT OF CHEMISTRY
DETAILED STRUCTURE OF BIS-MICRON-(TRIMETHYLSILYLMETHYLIDYNE)TET--ETC(U)
SEP 77 M H CHISHOLM, F A COTTON, M EXTINE
TR-77-02

F/6 7/3
N00014-76-C-0826
NL

UNCLASSIFIED

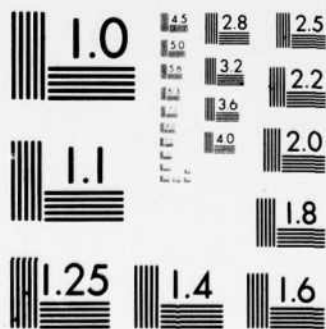
1 OF 1
AD
A045626



A045

1.0 1.1 1.25 1.4 1.6 1.8 2.0 2.2 2.5 2.8 3.2 3.6 4.0 4.5 5.0 5.6 6.3 7.1 8.0 9.0 10 11.2 12.5 14 16 18 20 22.5 25 28 32 36 40 45 50 56 63 71 80 90 100

MICROCOPY RESOLUTION TEST CHART
NATIONAL BUREAU OF STANDARDS-1963-A



MICROCOPY RESOLUTION TEST CHART
NATIONAL BUREAU OF STANDARDS-1963-A

AD A 045626

OFFICE OF NAVAL RESEARCH

Contract N00014-76-C-0826

Task No. NR 056-625

TECHNICAL REPORT NO. 77-02

Detailed Structure of Bis- μ -(trimethylsilylmethylidyne)

tetrakis-(trimethylsilylmethyl)ditungsten(W-W).

by M.H. Chisholm,^{1a} F.A. Cotton,^{1b*} M. Extine,^{1b}
and C.A. Murillo^{1a}

Prepared for Publication

in

Journal of Inorganic Chemistry

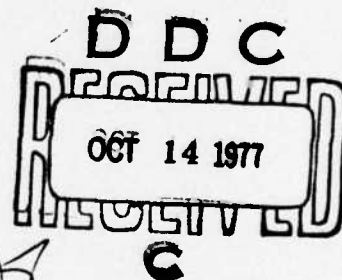
Departments of Chemistry
Princeton University,
Princeton, New Jersey 08540
and
Texas A&M University
College Station, Texas 77843

September 22, 1977

Reproduction in whole or in part is permitted for
any purpose of the United States government

Approved for Public Release: Distribution Unlimited

12
B.S.



AD No. _____
DDC FILE COPY

SECURITY CLASSIFICATION OF THIS PAGE (When Data Entered)

REPORT DOCUMENTATION PAGE

READ INSTRUCTIONS
BEFORE COMPLETING FORM

1. REPORT NUMBER

2. GPO accession NO.

3. RECIPIENT'S CATALOG NUMBER

4. TITLE (and Subtitle)

Detailed Structure of

Bis-(trimethylsilyldiynyl) tetrakis-
(trimethylsilylmethyl) ditungsten (W-W).

5. TYPE OF REPORT & PERIOD COVERED

Technical Report, 1977

6. PERFORMING ORG. REPORT NUMBER

TR-77-82

7. AUTHOR(s)

M.H./Chisholm, F.A./Cotton, M./Extine

C.A./Murillo

8. CONTRACT OR GRANT NUMBER(s)

NO0014-76-C-0826

NR 056-625

9. PERFORMING ORGANIZATION NAME AND ADDRESS

Departments of Chemistry

Princeton University, Princeton, N.J.

Texas A&M University, College Station, Tx.

10. PROGRAM ELEMENT, PROJECT, TASK
AREA & WORK UNIT NUMBERS

11. CONTROLLING OFFICE NAME AND ADDRESS

Office of Naval Research

Department of the Navy

12. REPORT DATE

22 Sep 1977

13. NUMBER OF PAGES

12 18p.

14. MONITORING AGENCY NAME & ADDRESS (if different from Controlling Office)

15. SECURITY CLASS. (of this report)

15a. DECLASSIFICATION/DOWNGRADING
SCHEDULE

16. DISTRIBUTION STATEMENT (of this Report)

Approved for public release; distribution unlimited

17. DISTRIBUTION STATEMENT (of the abstract entered in Block 20, if different from Report)

18. SUPPLEMENTARY NOTES

19. KEY WORDS (Continue on reverse side if necessary and identify by block number)

Tungsten, Ditungsten, Alkyl, Alkylidyne, Metal-to-Metal Bond

20. ABSTRACT (Continue on reverse side if necessary and identify by block number)

The crystal and molecular structures of a compound of composition $W_2(CSiMe_3)_2(CH_2SiMe_3)_4$ have been determined. The compound consists of dinuclear molecules which contain bridging alkylidyne groups, $CSiMe_3$, which, along with the tungsten atoms form planar, rhombic rings, W-C-W-C. Two alkyl groups, CH_2SiMe_3 , are attached to each metal atom to form distorted tetrahedra about the metal atoms. There are two crystallographically independent molecules,

each residing on a crystallographic inversion center. The two crystallographically independent W-W distances, $2.521(2)\text{\AA}$, and $2.549(2)\text{\AA}$, are consistent with the presence of W-W single bonds. The basic crystallographic data are as follows. Space group, $P2_1/a$. Unit cell dimensions: $a = 11.976(4)\text{\AA}$; $b = 18.989(5)\text{\AA}$; $c = 18.111(5)\text{\AA}$; $\beta = 101.02(2)^\circ$; $V = 4043(2)\text{\AA}^3$; $Z = 4$.

Contribution from the Departments of Chemistry
Texas A&M University, College Station, Texas 77843
Princeton University, Princeton, N. J. 08540

Detailed Structure of Bis- μ -(trimethylsilylmethyldiyn)tetraakis-
(trimethylsilylmethyl)ditungsten(W-W).

M. H. Chisholm,^{1a} F. A. Cotton,^{1b*} M. Extine,^{1b} and C. A. Murillo^{1a}

ABSTRACT

The crystal and molecular structures of a compound of composition $W_2(CSiMe_3)_2(CH_2SiMe_3)_4$ have been determined. The compound consists of dinuclear molecules which contain bridging alkylidyne groups, $CSiMe_3$, which, along with the tungsten atoms form planar, rhombic rings, $\overline{W-C-W-C}$. Two alkyl groups, CH_2SiMe_3 , are attached to each metal atom to form distorted tetrahedra about the metal atoms. There are two crystallographically independent molecules, each residing on a crystallographic inversion center. The two crystallographically independent W-W distances, $2.521(2)\text{\AA}$ and $2.549(2)\text{\AA}$, are consistent with the presence of W-W single bonds. The basic crystallographic data are as follows. Space group, $P2_1/a$. Unit cell dimensions: $a = 11.976(4)\text{\AA}$; $b = 18.989(5)\text{\AA}$; $c = 18.111(5)\text{\AA}$; $\beta = 101.02(2)^\circ$; $V = 4043(2)\text{\AA}^3$; $Z = 4$.

ACCESSION for	
NTIS	White Section <input checked="" type="checkbox"/>
DDC	Buff Section <input type="checkbox"/>
UNANNOUNCED	
JUSTIFICATION	
BY	
DISTRIBUTION/AVAILABILITY CODES	
Dist.	SPECIAL
A	

INTRODUCTION

In a previous study² we attempted to prepare $W_2(CH_2SiMe_3)_6$ ³ from the reaction between WCl_4 and Me_3SiCH_2MgCl (1:4 mole ratio) and fortuitously isolated a new compound which we formulated,² on the basis of noncrystallographic evidence, as bis-μ-(trimethylsilylmethylidyne)tetrakis(trimethylsilylmethyl)ditungsten, $W_2(CSiMe_3)_2(CH_2SiMe_3)_4$, I. We proposed this structure by analogy to that found⁴ for $Nb_2(CSiMe_3)_2(CH_2SiMe_3)_4$ but explicitly noted that the ditungsten compound should contain a metal-to-metal bond. $W_2(CSiMe_3)_2(CH_2SiMe_3)_4$ has also been prepared independently,⁵ and the same structure proposed.

We report here the results of a single crystal x-ray study on I that confirms the structure proposed for it.

EXPERIMENTAL SECTION

The method we used for the preparation of I has been described previously.² Crystals of I were grown from pentane at ca. -78°C. Reactions of I with C_2H_2 , $MeCCMe$, $PhCCH$, $MeO_2CC_2CO_2Me$, C_3H_4 , C_2H_4 , 1,3-butadiene, and CO_2 were carried out in 5 mm NMR tubes in toluene- d_8 . Gaseous reagents were added to solutions of I using vacuum line techniques. Other reagents were added to the NMR tubes by syringe. The progress of the reactions was monitored via 1H NMR spectroscopy. No attempt was made to isolate any of the products of these reactions.

X-Ray Crystallography. Crystal Selection and Data Collection.

Considerable difficulty was encountered in (i) mounting crystals of $W_2(CSiMe_3)_2(CH_2SiMe_3)_4$ in such a manner that they did not decompose and (ii) once they were mounted, finding a crystal of suitable quality. Finally, a platelike crystal measuring ca. 0.17 x 0.34 x 0.56 mm was mounted by wedging it into a nitrogen-filled capillary in a glove box. The ends of the capillary were

sealed with a small hand torch. The crystal was mounted with its longest dimension nearly coincident with the ϕ axis. Omega scans of several intense low-angle reflections had peak widths at half-height of ca. 0.2° . Lattice constants and axial photographs indicated that the crystal belonged to the monoclinic system. The unit cell constants, determined from the setting angles of 15 reflections having $21^\circ < 2\theta_{\text{MoK}\alpha} < 27^\circ$ are: $a = 11.976(4)\text{\AA}$, $b = 18.989(5)\text{\AA}$, $c = 18.111(5)\text{\AA}$, $\beta = 101.02(2)^\circ$, and $V = 4043(2)\text{\AA}^3$. The observed volume was consistent with that expected for $Z = 4$. The systematic absences observed during data collection, $0k0$ ($k = 2n+1$) and $h0l$ ($h = 2n+1$) uniquely determined the space group to be $P2_1/a$ (equiv. positions $\pm \{x, y, z; 1/2-x, 1/2+y, -z\}$) a non-standard setting of $P2_1/c$ (No. 14).

The data were collected at 25°C with a Snytex P1 autodiffractometer equipped with a graphite crystal monochromator and using $\text{MoK}\alpha$ ($\lambda = 0.710730\text{\AA}$) radiation. Variable scan rates from 4.0 to $24.0^\circ/\text{min}$ were used for symmetric $\theta/2\theta$ scans ranging from 1.0° below to 1.0° above the calculated $\text{MoK}\alpha_1$ - $\text{K}\alpha_2$ doublet. The ratio of scan to background time was 0.5 . A total of 5313 unique, non-systematically absent reflections having $0^\circ < 2\theta_{\text{MoK}\alpha} < 45.0^\circ$ were recorded. The intensities of three standard reflections were monitored frequently throughout data collection and showed no decrease in intensity. The data were reduced to a set of relative $|F_o|^2$ values.⁶ The intensities were corrected for absorption effects ($\mu = 62.1\text{ cm}^{-1}$); transmission coefficients ranged from 0.160 to 0.394 with an average of 0.285 . The 2396 data having $I > 3\sigma(I)$ were retained as observed and used in subsequent structure solution and refinement.

Structure Solution and Refinement.⁶ The positions of the 32 unique non-hydrogen atoms were determined by standard heavy atom methods. The structure was refined to convergence using anisotropic thermal parameters for the tungsten and silicon atoms and isotropic thermal parameters for the carbon atoms. The

final discrepancy indices were

$$R_1 = \sum ||F_o| - F_c| / F_o = 0.070$$

$$R_2 = (\sum w ||F_o| - F_c|^2 / \sum |F_o|^2)^{1/2} = 0.083$$

The estimated standard deviation of an observation of unit weight was 1.48.

A final difference Fourier map showed no peaks of chemical significance. The largest 7 peaks in the map were within ca. 1Å of the tungsten atoms and presumably reflect the inadequacies of the absorption correction.

A table of observed and calculated structure factors (11 pages) is available as supplementary material. See any current masthead page for ordering information.

RESULTS AND DISCUSSION

Reactivity. I is a highly reactive, air sensitive compound. It reacts in solution at room temperature with acetylene, dimethylacetylene, phenylacetylene, dimethylacetylenedicarboxylate, allene, ethylene and 1,3-butadiene. No reaction was observed with CO₂. The above reactions were carried out in sealed tubes and monitored via ¹H NMR spectroscopy.

It is interesting to note that the corresponding Nb₂(CSiMe₃)₂(CH₂SiMe₃)₄ compound is comparatively inert, although it too is quite sensitive to moisture and oxygen.

Solid State Structure of W₂(CSiMe₃)₂(CH₂SiMe₃)₄. The compound is composed of discrete molecules in the solid state. Each molecule possesses crystallographically imposed C₁ symmetry and the asymmetric unit consists of halves of two different molecules. The atomic positional and thermal parameters are given in Table I. The molecular structure of molecule I is shown in Figure 1 along with the atomic labelling scheme. A figure for molecule II is not given since the two molecules are essentially identical. The atoms of

molecule II are numbered using sets of numbers that follow those for molecule I. For example, the carbon atoms C(13), C(14),...C(24) correspond to C(1), C(2),...C(12) of molecule I. Bond distances and angles for both molecules are given in Tables II and III. A comparison of pertinent molecular dimensions for $W_2(CH_2SiMe_3)_6$, I, and $Nb_2(CSiMe_3)_2(CH_2SiMe_3)_4$ is given in Table IV.

The $W_2(CSiMe_3)_2(CH_2SiMe_3)_4$ molecule has a structure very similar to that of the niobium analog, although it may be noted that the two compounds are not isomorphous. Each metal atom is coordinated to two terminal alkyl groups and to two bridging alkylidyne groups. The C(1)-W(1)-C(1)' and C(5)-W(1)-C(9) planes are nearly perpendicular to each other and the three bonds to the bridging "carbyne" carbons are essentially coplanar. The only important differences between the Nb_2 and W_2 structures are due to the presence of the metal-metal bond in the tungsten compound.

The effects of the W-W bond on the molecular dimensions are very evident in three places. First, of course, there are the metal-metal distances themselves. The Nb-Nb distance, though it is as short, or shorter than, a number of Mo-Mo single bond distances,⁷ which range from ca. 2.5 to ca. 3.3Å, is consistent with the absence of direct Nb-Nb bonding and is determined by the rather strong and short bonds to the bridging carbon atoms. The mean W-W distance, 2.535Å, is very much shorter and is consistent with the presence of a single bond between the tungsten atoms. W-W single bonds, like those between molybdenum atoms,⁷ may vary enormously in length but the values observed here are near the short end of the range and leave no doubt that a W-W bond exists. Since W^{3+} -W bonds have lengths ≤ 2.30 Å and Re^{2+} -Re bonds (there are no well-defined W^{2+} -W bonds for comparison) are in the range 2.45-2.49Å, it is

not likely that there is significant multiple character to the W-W bond here.

The other two results of the M-M bond existing in I but not in its Nb analog are (a) a considerable contraction of the M-C-M angle in the W compound, and (b) an expansion of the ring angles at the W atoms. In the Nb compound the Nb-C-Nb angle is $>90^\circ$ ($94.4(4)^\circ$) while in the W compound the mean W-C-W angle is $<90^\circ$ ($84.5(10)^\circ$). Because the rings are planar the ring angles at the metal atoms are necessarily the complements of those at the bridging carbon atoms.

An interesting but somewhat puzzling feature of this structure is the apparent lack of symmetry in the bridges. This is suggested by the inequality of W-C bond lengths and also by the inequality in the W-C-Si angles. On the basis of the discrepancies in distances alone, one would not be justified in asserting that asymmetry exists, since the two independent discrepancies are only 0.12\AA and 0.08\AA while the esd in each individual bond length is ca. 0.03\AA . However, the discrepancies in the angles are 16° in each case, while each individual angle has an esd of 2° , thus making it likely that there is some real asymmetry, although it may be a lot smaller than the discrepancies just mentioned would imply. Of course, very small discrepancies might result from intra- or intermolecular packing forces. This is an attractive idea, since there is no evident electronic reason to expect, or even rationalize, asymmetric bridging. In the case of the niobium compound there was similar, borderline evidence for asymmetry of the bridges.

Acknowledgement. We are grateful to the National Science Foundation for support at Texas A&M University and the Office of Naval Research at Princeton University.

REFERENCES

1. (a) Princeton University. (b) Texas A&M University.
2. M. H. Chisholm, F. A. Cotton, M. Extine and B. R. Stults, Inorg. Chem., 15, 2252 (1976).
3. W. Mowat, A. J. Shortland, G. Yagupsky, M. Yagupsky, N. J. Hill, and G. Wilkinson, J. Chem. Soc., Dalton Trans., 533 (1972).
4. F. Huq, W. Mowat, A. C. Skapski and G. Wilkinson, Chem. Comm., 1477 (1971).
5. R. A. Anderson, A. L. Gayler and G. Wilkinson, Angew. Chem. Int. Ed. Engl., 15, 609 (1976).
6. All data reduction, structure-solving and refinement programs were those of the Enraf-Nonius structure-determination package, and were executed on the PDD 11/45 compouter system at the Molecular Structure Corporation, College Station, Texas 77801
7. F. A. Cotton, J. Less-Common Metals, 54, 3 (1977).

TABLE I. POSITIONAL AND THERMAL PARAMETERS AND THEIR ESTIMATED STANDARD DEVIATIONS. ^a

ATOM	X	Y	Z	β_{11}	β_{22}	β_{33}	β_{12}	β_{13}	β_{23}
1	0.4686(1)	0.03122(6)	0.43717(7)	0.00737(9)	0.00237(3)	0.00312(4)	-0.0010(1)	0.0016(1)	0.00032(8)
2	0.0771(1)	0.01162(7)	-0.03707(8)	0.00915(11)	0.00424(5)	0.00330(5)	-0.0025(1)	0.0012(1)	0.00022(9)
3	0.5341(9)	0.1522(5)	0.5922(6)	0.0136(10)	0.0030(3)	0.0042(4)	-0.0006(9)	-0.001(1)	-0.0021(5)
4	0.1700(8)	0.0510(5)	0.4362(6)	0.0083(8)	0.0042(3)	0.0053(5)	0.0010(8)	0.000(1)	-0.0003(6)
5	0.6043(9)	0.1424(5)	0.3268(6)	0.0147(10)	0.0047(3)	0.0049(5)	-0.0050(10)	0.005(1)	0.0019(7)
6	0.0249(12)	0.1592(6)	0.0775(9)	0.0223(15)	0.0040(4)	0.0099(8)	-0.0021(12)	0.012(2)	-0.0015(9)
7	0.1170(11)	0.1131(6)	-0.1879(7)	0.0180(13)	0.0078(5)	0.0056(6)	-0.0004(13)	-0.002(1)	0.0059(8)
8	0.3275(11)	-0.0476(7)	0.0920(9)	0.0133(12)	0.0088(6)	0.0082(8)	0.0048(14)	-0.003(2)	-0.0007(12)
9	0.513(2)	0.068(1)	0.533(2)	5.2(7)					
10	0.470(3)	0.229(2)	0.533(2)	7.3(9)					
11	0.458(3)	0.144(2)	0.677(2)	7.1(9)					
12	0.693(3)	0.173(2)	0.625(2)	8.1(10)					
13	0.298(3)	0.062(2)	0.392(2)	6.4(8)					
14	0.147(3)	-0.043(2)	0.462(2)	9.3(11)					
15	0.047(4)	0.091(2)	0.366(3)	10.2(13)					
16	0.189(3)	0.105(2)	0.521(2)	8.3(10)					
17	0.500(3)	0.050(2)	0.366(2)	6.9(9)					
18	0.468(3)	0.192(2)	0.304(3)	9.0(11)					
19	0.710(3)	0.194(2)	0.394(2)	8.7(11)					
20	0.658(4)	0.132(3)	0.244(3)	13.5(16)					
21	0.014(3)	0.068(2)	0.025(2)	6.6(9)					
22	0.154(6)	0.169(3)	0.153(4)	19.2(25)					
23	0.007(6)	0.238(4)	0.020(4)	20.8(27)					
24	-0.097(6)	0.172(4)	0.126(5)	21.2(29)					
25	0.035(3)	0.044(2)	-0.150(2)	7.9(10)					
26	0.231(4)	0.159(2)	-0.118(3)	12.2(15)					
27	0.128(8)	0.118(5)	-0.284(6)	30.7(42)					
28	0.000(2)	0.189(4)	-0.200(6)	27.3(37)					

Table II. Bond Distances (Å)

Atoms	Distance	Atoms	Distance
W(1)-W(1)'	2.549(2)	Si(2)-C(8)	1.82(3)
-C(1)	1.85(3)	Si(3)-C(9)	1.93(3)
-C(1)'	1.97(2)	-C(10)	1.85(4)
-C(5)	2.13(3)	-C(11)	1.86(4)
-C(9)	2.05(3)	-C(12)	1.75(5)
W(2)-W(2)'	2.521(2)	S(4)-C(13)	1.97(3)
-C(13)	1.82(3)	-C(14)	1.87(7)
-C(13)'	1.90(3)	-C(15)	1.80(7)
-C(17)	2.11(4)	-C(16)	1.86(7)
-C(21)	2.13(3)	Si(5)-C(17)	1.84(3)
Si(1)-C(1)	1.91(3)	-C(18)	1.89(5)
-C(2)	1.88(3)	-C(19)	1.77(9)
-C(3)	1.93(3)	-C(20)	1.99(8)
-C(4)	1.92(3)	Si(6)-C(21)	1.83(4)
Si(2)-C(5)	1.87(3)	-C(22)	1.91(6)
-C(6)	1.88(3)	-C(23)	1.96(7)
-C(7)	1.90(4)	-C(24)	1.93(5)

Numbers in parentheses are estimated standard deviations in the least significant digits.

Table III. Bond Angles (Degs).

Atoms		Angle		Atoms		Angle		Atoms		Angle	
W(1)	W(1)'	C(1)	50.2(8)	C(1)	S1(1)	C(4)	111(1)	C(13)	S1(4)	C(15)	117(3)
W(1)	W(1)'	C(1)	46.1(8)	C(2)	S1(1)	C(3)	108(1)	C(13)	S1(4)	C(16)	111(2)
W(1)	W(1)'	C(5)	124.4(8)	C(2)	S1(1)	C(4)	107(1)	C(14)	S1(4)	C(15)	109(3)
W(1)	W(1)'	C(9)	121.7(8)	C(3)	S1(1)	C(4)	111(2)	C(14)	S1(4)	C(16)	105(3)
C(1)	W(1)	C(1)'	96(1)	C(5)	S1(2)	C(6)	112(1)	C(15)	S1(4)	C(16)	98(3)
C(1)	W(1)	C(5)	110(1)	C(5)	S1(2)	C(7)	106(2)	C(17)	S1(5)	C(18)	117(2)
C(1)	W(1)	C(9)	114(1)	C(5)	S1(2)	C(8)	108(1)	C(17)	S1(5)	C(19)	123(3)
C(1)	W(1)	C(5)	114(1)	C(6)	S1(2)	C(7)	114(2)	C(17)	S1(5)	C(20)	98(3)
C(1)	W(1)	C(9)	107(1)	C(6)	S1(2)	C(8)	109(2)	C(18)	S1(5)	C(19)	117(3)
C(5)	W(1)	C(9)	114(1)	C(7)	S1(2)	C(8)	107(2)	C(18)	S1(5)	C(20)	98(3)
W(2)	W(2)'	C(13)	48.7(9)	C(9)	S1(3)	C(10)	110(1)	C(19)	S1(5)	C(20)	92(4)
W(2)	W(2)'	C(13)'	46.0(9)	C(9)	S1(3)	C(11)	112(2)	C(21)	S1(6)	C(22)	112(2)
W(2)	W(2)'	C(17)	120.4(9)	C(9)	S1(3)	C(12)	109(2)	C(21)	S1(6)	C(23)	108(3)
W(2)	W(2)'	C(21)	124.1(9)	C(10)	S1(3)	C(11)	110(2)	C(21)	S1(6)	C(24)	113(2)
C(13)	W(2)	C(13)'	95(1)	C(10)	S1(3)	C(12)	109(2)	C(22)	S1(6)	C(23)	121(3)
C(13)	W(2)	C(17)	112(1)	C(11)	S1(3)	C(12)	108(2)	C(22)	S1(6)	C(24)	100(2)
C(13)	W(2)	C(21)	113(1)	W(1)'	C(1)	W(1)	84(1)	C(23)	S1(6)	C(24)	103(3)
C(13)	W(2)	C(17)	108(1)	W(1)	C(1)	S1(1)	146(2)	W(2)'	C(13)	W(2)	85(1)

Table III. Bond Angles (Degs).

Atoms		Angle	Atoms		Angle	Atoms		Angle			
C(13)	W(2)	C(21)	111(1)	W(1)'	C(1)	Si(1)	130(2)	W(2)	C(13)	Si(14)	145(2)
C(17)	W(2)	C(21)	115(1)	W(1)	C(5)	Si(2)	128(2)	W(2)'	C(13)	Si(4)	129(2)
C(1)	Si(1)	C(2)	109(1)	W(1)	C(9)	Si(3)	124(1)	W(2)	C(17)	Si(5)	121(2)
C(1)	Si(1)	C(3)	110(1)	C(13)	Si(4)	C(14)	115(2)	W(2)	C(21)	Si(6)	131(2)

Numbers in parentheses are estimated standard deviations in the least significant digits.

Table IV. Average Bond Lengths (Å) in $W_2(CSiMe_3)_2(CH_2SiMe_3)_4$, $W_2(CH_2SiMe_3)_6$,^a and $Nb_2(CSiMe_3)_2(CH_2SiMe_3)_4$.^b

Compound	Bonds	Average	Range
$W_2R_2'R_4$	W-W	2.535	2.521(2)-2.549(2)
	W-C _t	2.11(4)	2.05(3)-2.13(3)
	W-C _b	1.89(7)	1.82(3)-1.97(2)
	Si-C	1.88(6)	1.75(5)-1.99(8)
W_2R_6	W-W	2.255(2)	2.254(2)-2.255(2)
	W-C _t	2.14(6)	2.03(4)-2.23(3)
	Si-C	1.89(6)	1.80(5)-2.04(4)
$Nb_2R_2'R_4$	Nb-Nb	2.897(2)	—
	Nb-C _t	2.160(9)	—
	Nb-C _b	1.975	1.954(9)-1.995(9)
	Si-C	1.86(1)	—

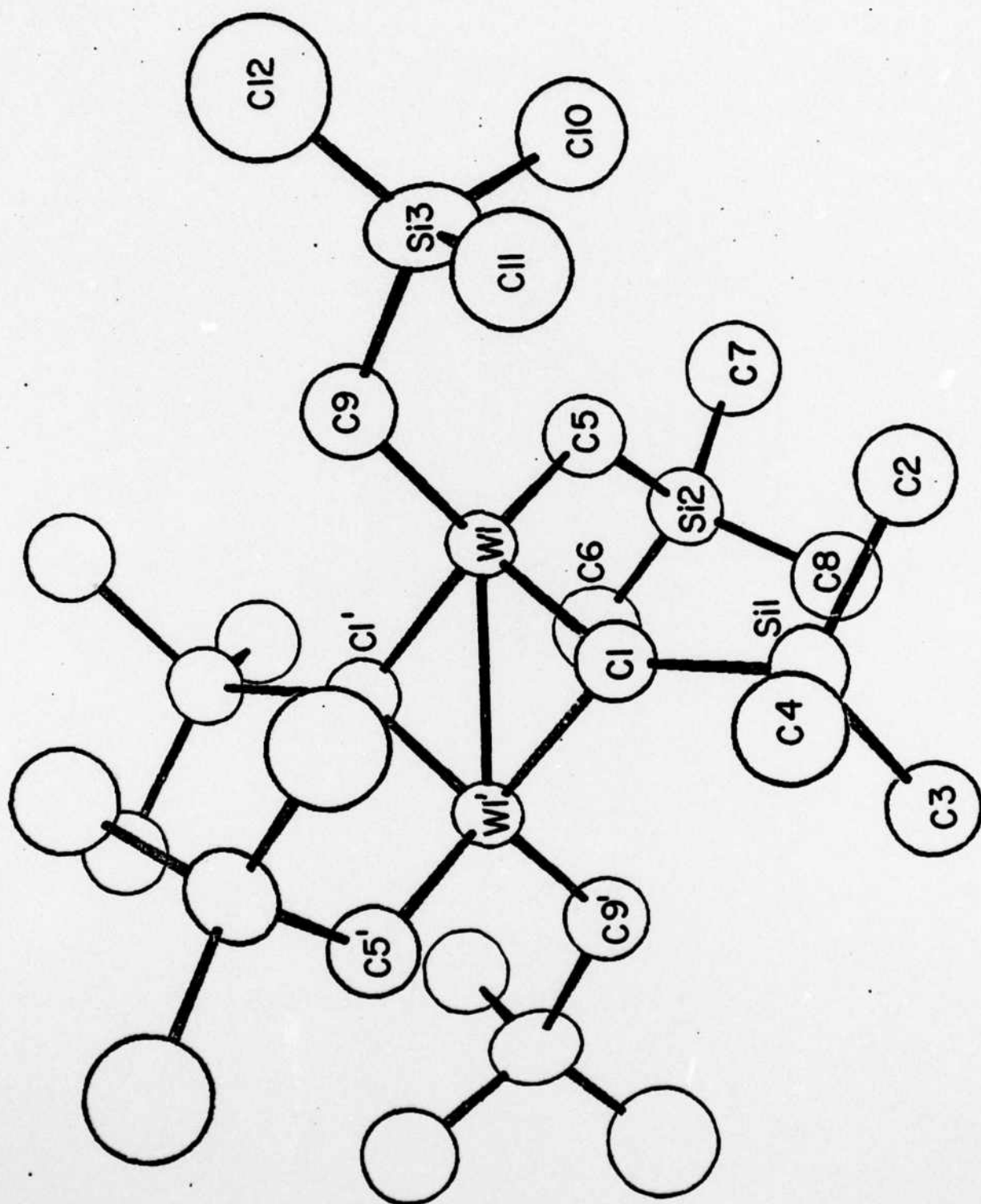
^aCf. Ref. 2

^bCf. Ref. 4.

^cR' = CSiMe₃, R = CH₂SiMe₃, C_t = terminal carbon, C_b = bridging carbon.

Numbers in parentheses are either the standard deviation from the mean bond lengths or the estimated standard deviations of the individual bond lengths.

Figure 1. A view of Molecule I using 40% probability ellipsoids and showing the atom labelling scheme. Molecule II is essentially identical.



TECHNICAL REPORT DISTRIBUTION LIST

No. Copies

No. Copies

Dr. D. A. Vroom
Intelcom Rad Tech.
P.O. Box 80817
San Diego, California 92138

1

Dr. P. R. Antoniewicz
University of Texas
Department of Physics
Austin, Texas 78712

1

Dr. W. D. McCormick
University of Texas
Department of Physics
Austin, Texas 78712

1

Dr. G. A. Somorjai
University of California
Department of Chemistry
Berkeley, California 94720

1

Dr. L. N. Jarvis
Surface Chemistry Division
4555 Overlook Avenue, S.W.
Washington, D.C. 20375

1

Dr. W. M. Risen, Jr.
Brown University
Department of Chemistry
Providence, Rhode Island 02912

1

Dr. Bruce Wagner, Jr.
Northwestern University
Materials Research Center
Evanston, Illinois 60201

1

~~Dr. H. H. Chisholm~~
~~Chemistry Department~~
~~Princeton University~~
~~Princeton, New Jersey 08540~~

1

Dr. J. B. Hudson
Rensselaer Polytechnic Institute
Materials Division
Troy, New York 12181

1

Dr. John T. Yates
National Bureau of Standards
Department of Commerce
Surface Chemistry Section
Washington, D.C. 20234

1

Dr. Theodore E. Madey
Department of Commerce
National Bureau of Standards
Surface Chemistry Section
Washington, D.C. 20234

1

Dr. J. M. White
University of Texas
Department of Chemistry
Austin, Texas 78712

1

Dr. R. W. Vaughan
California Institute of Technology
Division of Chemistry & Chemical
Engineering
Pasadena, California 91125

1

Dr. Keith H. Johnson
Massachusetts Institute of Technology
Department of Metallurgy and Materials
Science
Cambridge, Massachusetts 02139

1

Dr. M. S. Wrighton
Massachusetts Institute of Technology
Department of Chemistry
Cambridge, Massachusetts 02139

1

Dr. J. E. Demuth
IBM Corp.
Thomas J. Watson Research Center
P.O. Box 218
Yorktown Heights, New York 10598

1

Dr. C. P. Flynn
University of Illinois
Department of Physics
Urbana, Illinois 61801

1

Dr. W. Kohn
Department of Physics
University of California (San Diego)
La Jolla, California 92037

Dr. R. L. Park
Director, Center of Materials Research
University of Maryland
College Park, Maryland 20742

1

TECHNICAL REPORT DISTRIBUTION LIST

No. Copies

No. Copies

Dr. W. T. Peria
Electrical Engineering Department
University of Minnesota
Minneapolis, Minnesota 55455 1

Dr. Markis Tzoar
City University of New York
Convent Avenue at 138th Street
New York, New York 10031 1

Dr. Chia-wei Woo
Northwestern University
Department of Physics
Evanston, Illinois 60201 1

Dr. D. C. Mattis
Physics Department
Yeshiva University
Amsterdam Avenue & 185th Street
New York, New York 10033 1

Dr. Leonard Wharton
Department of Chemistry
James Franck Institute
5640 Ellis Avenue
Chicago, Illinois 60637 1

Dr. M. G. Lagally
Department of Metallurgical
and Mining Engineering
University of Wisconsin
Madison, Wisconsin 53706 1

Dr. Robert Gomer
Department of Chemistry
James Franck Institute
5640 Ellis Avenue
Chicago, Illinois 60637 1

Dr. R. F. Wallis
Department of Physics
University of California (Irvine)
Irvine, California 92664 1

TECHNICAL REPORT DISTRIBUTION LIST

No. Copies

No. Copies

Dr. W. N. Lipscomb
Department of Chemistry
Harvard University
Cambridge, Massachusetts 02138 1

Dr. R. M. Grimes
Department of Chemistry
University of Virginia
Charlottesville, Virginia 22903 1

Dr. M. Tsutsui
Department of Chemistry
Texas A&M University
College Station, Texas 77843 1

Dr. C. Quicksall
Department of Chemistry
Georgetown University
37th & O Streets
Washington, D.C. 20007 1

Dr. M. F. Hawthorne
Department of Chemistry
University of California
Los Angeles, California 90024 1

Dr. D. B. Brown
Department of Chemistry
University of Vermont
Burlington, Vermont 05401 1

Dr. Alan Siedle
National Bureau of Standards
Department of Commerce
Chemistry Section
Washington, D.C. 20375 1

Dr. W. B. Fox
Naval Research Laboratory
Chemistry Division
Code 6130
Washington, D.C. 20375 1

Dr. R. J. Lagow
University of Texas
Department of Chemistry
Austin, Texas 78712 1

Dr. A. Cowley
University of Texas
Department of Chemistry
Austin, Texas 78712 1

Dr. W. Hatfield
University of North Carolina
Department of Chemistry
Chapel Hill, North Carolina 27514 1

Dr. D. Seyferth
Massachusetts Institute of Technology
Department of Chemistry
Cambridge, Massachusetts 02139 1

~~Dr. M. H. Chisholm~~
~~Princeton University~~
~~Department of Chemistry~~
~~Princeton, New Jersey 08540 1~~

Dr. B. Foxman
Department of Chemistry
Brandeis University
Waltham, Massachusetts 02154 1

TECHNICAL REPORT DISTRIBUTION LIST

No. Copies

No. Copies

Office of Naval Research
Arlington, Virginia 22217
Attn: Code 472

2

Defense Documentation Center
Building 5, Cameron Station
Alexandria, Virginia 22314

12

Office of Naval Research
Arlington, Virginia 22217
Attn: Code 102IP

6

U.S. Army Research Office
P.O. Box 12211
Research Triangle Park, North Carolina 27709
Attn: CRD-AA-IP

ONR Branch Office
536 S. Clark Street
Chicago, Illinois 60605
Attn: Dr. George Sandoz

1

Commander
Naval Undersea Research & Development
Center
San Diego, California 92132
Attn: Technical Library, Code 133

1

ONR Branch Office
715 Broadway
New York, New York 10003
Attn: Scientific Dept.

1

Naval Weapons Center
China Lake, California 93555
Attn: Head, Chemistry Division

1

ONR Branch Office
1030 East Green Street
Pasadena, California 91106
Attn: Dr. R. J. Marcus

1

Naval Civil Engineering Laboratory
Port Hueneme, California 93041
Attn: Mr. W. S. Haynes

1

ONR Branch Office
760 Market Street, Rm. 447
San Francisco, California 94102
Attn: Dr. P. A. Miller

1

Professor O. Heinz
Department of Physics & Chemistry
Naval Postgraduate School
Monterey, California 93940

ONR Branch Office
495 Summer Street
Boston, Massachusetts 02210
Attn: Dr. L. H. Peebles

1

Dr. A. L. Slafkosky
Scientific Advisor
Commandant of the Marine Corps (Code RD-1)
Washington, D.C. 20380

1

Director, Naval Research Laboratory
Washington, D.C. 20390
Attn: Library, Code 2029 (ONRL) 6
Technical Info. Div. 1
Code 6100, 6170 1

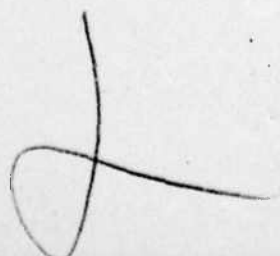
The Asst. Secretary of the Navy (R&D)
Department of the Navy
Room 4E736, Pentagon
Washington, D.C. 20350

1

Commander, Naval Air Systems Command
Department of the Navy
Washington, D.C. 20360
Attn: Code 310C (H. Rosenwasser) 1

TECHNICAL REPORT DISTRIBUTION LIST

	<u>No. Copies</u>		<u>No. Copies</u>
Dr. M. A. El-Sayed University of California Department of Chemistry Los Angeles, California 90024	1	Dr. J. R. MacDonald Code 6110 Chemistry Division Naval Research Laboratory Washington, D.C. 20375	1
Dr. M. W. Windsor Washington State University Department of Chemistry Pullman, Washington 99163		Dr. G. B. Schuster Chemistry Department University of Illinois Urbana, Illinois 61801	1
Dr. E. R. Bernstein Colorado State University Department of Chemistry Fort Collins, Colorado 80521		Dr. E. M. Eyring University of Utah Department of Chemistry Salt Lake City, Utah 84112	1
Dr. C. A. Heller Naval Weapons Center Code 6059 China Lake, California 93555	1	Dr. A. Adamson University of Southern California Department of Chemistry Los Angeles, California 90007	1
Dr. G. Jones, II Boston University Department of Chemistry Boston, Massachusetts 02215		Dr. M. S. Wrighton Massachusetts Institute of Technology Department of Chemistry Cambridge, Massachusetts 02139	1
Dr. M. H. Chisholm Chemistry Department Princeton, New Jersey 08540	1		



ATE
LMED
-7

ATE
LMED
- 7