

UNCLASSIFIED

SECURITY CLASSIFICATION OF THIS PAGE (When Data Entered)

ADA 037213

REPORT DOCUMENTATION PAGE		READ INSTRUCTIONS BEFORE COMPLETING FORM
1. REPORT NUMBER TN #91	2. GOVT ACCESSION NO.	3. RECIPIENT'S CATALOG NUMBER
4. TITLE (and Subtitle) Plug Compatible Replacement for a Bell 303 Modem Using Local Twisted Pair Wire.		5. TYPE OF REPORT & PERIOD COVERED Technical Note August 1976
7. AUTHOR(s) Ronald C. Crane		6. PERFORMING ORG. REPORT NUMBER
9. PERFORMING ORGANIZATION NAME AND ADDRESS Stanford Electronics Laboratories Stanford University Stanford, CA 94305		8. CONTRACT OR GRANT NUMBER(s) MDA903-76C-0093 ARPA Order No-2494
11. CONTROLLING OFFICE NAME AND ADDRESS Defense Advanced Research Projects Agency Information Processing Techniques Office 1400 Wilson Ave., Arlington, VA 22209		10. PROGRAM ELEMENT, PROJECT, TASK AREA & WORK UNIT NUMBERS 6T10
14. MONITORING AGENCY NAME & ADDRESS (if diff. from Controlling Office) Mr. Philip Surra, Resident Representative Office of Naval Research Durant 165, Stanford University		12. REPORT DATE August 1976
16. DISTRIBUTION STATEMENT (of this report) Reproduction in whole or in part is permitted for any purpose of the U. S. Government.		13. NO. OF PAGES 34
17. DISTRIBUTION STATEMENT (of the abstract entered in Block 20, if different from report)		15. SECURITY CLASS. (of this report) UNCLASSIFIED
18. SUPPLEMENTARY NOTES		15a. DECLASSIFICATION/DOWNGRADING SCHEDULE
19. KEY WORDS (Continue on reverse side if necessary and identify by block number) MODEM, LINE DRIVERS, LINE RECEIVERS, PLUG COMPATIBLE BELL 303 MODEM REPLACEMENT, DC BASEBAND SIGNALLING, HIGH SPEED LOCAL COMMUNICATION EQUIPMENT		
20. ABSTRACT (Continue on reverse side if necessary and identify by block number) This note describes a low cost (\$275 per end) plug replacement for a Bell 303 50KB serial modem using local twisted pair wire for transmission. The unit contains a 50KHz crystal clock and appropriate drivers, receivers, and level shifters to convert the unbalanced local terminal interface to balanced DC signalling for transmission over local twisted pair wire. The note contains a description of the operation of the unit as well as an overview of the subassemblies which comprise the unit and detailed diagrams for each.		

DD FORM 1473

EDITION OF 1 NOV 65 IS OBSOLETE

UNCLASSIFIED

SECURITY CLASSIFICATION OF THIS PAGE (When Data Entered)

408071

1B

Plug Compatible Replacement
for a Bell 303 Modem
Using Local Twisted Pair Wire

✓
Letter on file
A

Technical Note No. 91

August 1976

Ronald C. Crane
Digital Systems Laboratory
Departments of Electrical Engineering and Computer Science
Stanford University
Stanford, California

ABSTRACT

This note describes a low cost (\$275 per end) plug replacement for a Bell 303 50KB serial modem using local twisted pair wire for transmission. The unit contains a 50 KHz crystal clock and appropriate drivers, receivers, and level shifters to convert the unbalanced local terminal interface to balanced DC signalling for transmission over local twisted pair wire. The note contains a description of the operation of the unit as well as an overview of the subassemblies which comprise the unit and detailed diagrams for each.

KEY WORDS

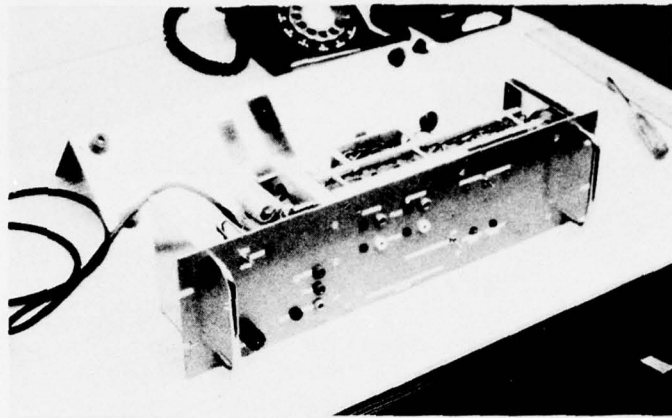
MODEM, LINE DRIVERS, LINE RECEIVERS, PLUG COMPATIBLE BELL 303
MODEM REPLACEMENT, DC BASEBAND SIGNALLING, HIGH SPEED LOCAL
COMMUNICATIION EQUIPMENT

The views and conclusions contained in this document are those of the author and should not be interpreted as necessarily representing the official policies, either express or implied, of the Defense Advanced Research Projects Agency or the United States Government.

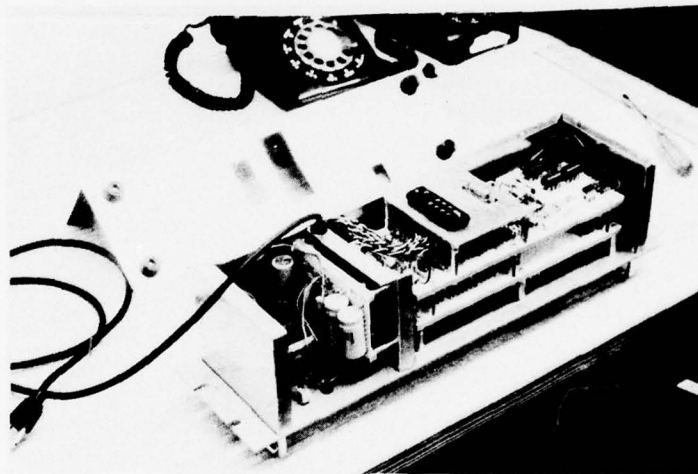
This research was supported by the Defense Advanced Research Projects Agency under ARPA Order No. 2494, Contract No. MDA903-76C-0093.

Table of Contents

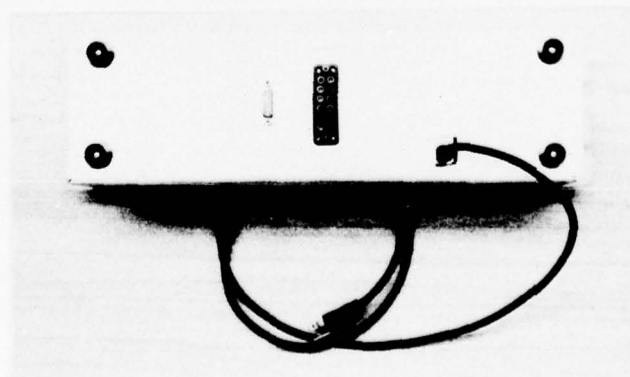
Section	Page
1.0 Introduction	1
2.0 Front Panel Switches and Indicators	3
2.1 Signal Flow Between Units	5
3.0 Hardware Overview	7
Board Interconnections	8
Physical Layout of Unit	9
Connector to Local Terminal	10
Connector to Balanced Line (other unit)	11
Stanford Plant Wiring	12
3.1 Power Supply	13
3.2 Balanced Driver & Receiver Board	15
Balanced Receivers	16
DC Channel Power Detection	17
Balanced Drivers	18
3.3 Logic Board	19
Logic Diagram	20
50 KHz Clock	21
Single Ended Cable Receivers	22
Single Ended Cable Drivers	23
3.4 Front Panel Component Wiring	24



Unit With Cover Removed



Rear View



Rear View (cover on)

Introduction

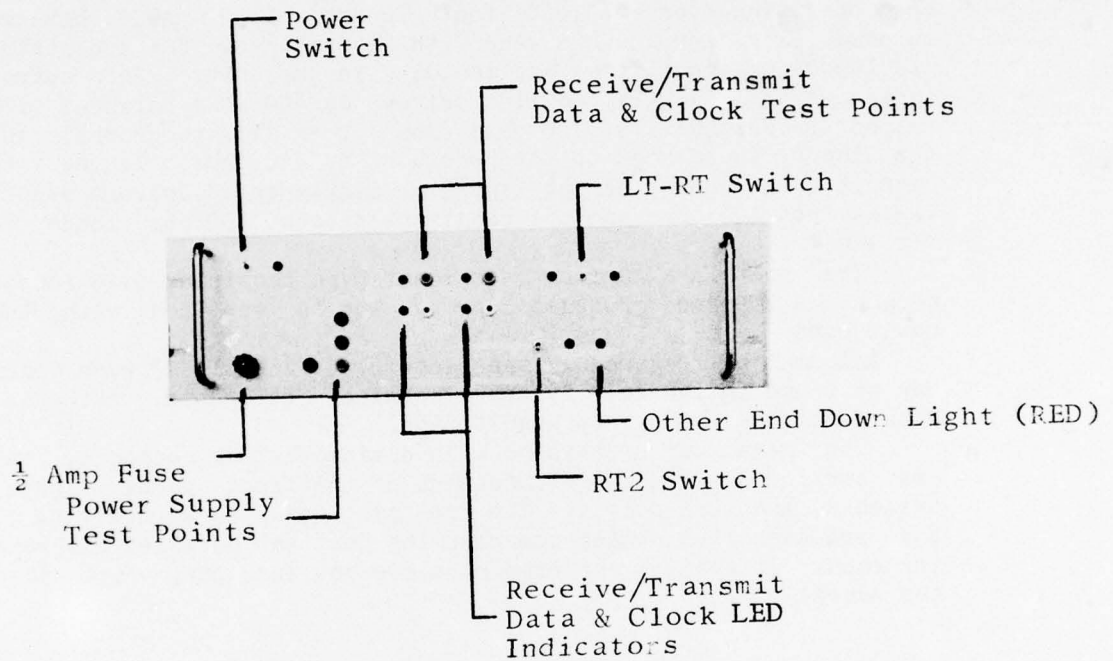
The unit is a low cost (\$275 per end) plug replacement for a Bell 303 50 kilobit serial modem using local twisted pair for transmission. The replacement contains a 50 KHz crystal clock and appropriate drivers and level shifters to convert the 23 mA unbalanced interface from the terminal equipment to a balanced line for transmission over local twisted pair wire. The unit has been operating over a 4,000 foot length of 22 AWG shielded twisted pair for over a year with no failures. Far end status and loopback capabilities are included in the unit. The output impedance of the balanced line drivers is 400 ohms balanced with respect to ground (i.e. 200 ohms from either side to ground) and the input impedance to the receivers is 112 ohms balanced with respect to ground. The unbalanced or single-ended drivers supply +23 mA into 100 ohms and the receivers present 100 ohm loads to the line.

The unit is a 19 inch rack mount type requiring 5.25 inches height. A standard grounded 3 prong plug is supplied with the power cord.

Information regarding the details of a Bell 303 type modem can be found in the Bell System Technical Reference, "Wideband Data Stations, 303 Type", August 1966.

The remainder of this note is divided into 2 sections. The next section describes the functions of the front panel lights, switches, and test points. The last part contains an overview of the subassemblies which comprise the unit and detailed diagrams for each. It enables the reader to see how each part fits into the overall unit.

Front Panel



Power- This switch connects and disconnects the unit from the 120 volt power source. The associated green LED indicates whether power is actually present.

Transmit & Receive Lights and Test Points- The lights are connected to the inputs and outputs of the balanced line transmitters and receivers respectively, as are the test points. The test point levels are TTL. The light is lit if the TTL level is a logic "1" or high. To see the balanced lines directly (instead of receiver output or transmitter input), open the back cover and connect to the appropriate terminating resistor on the balanced driver and receiver board.

LT-RT Switch (center position is NORMAL)

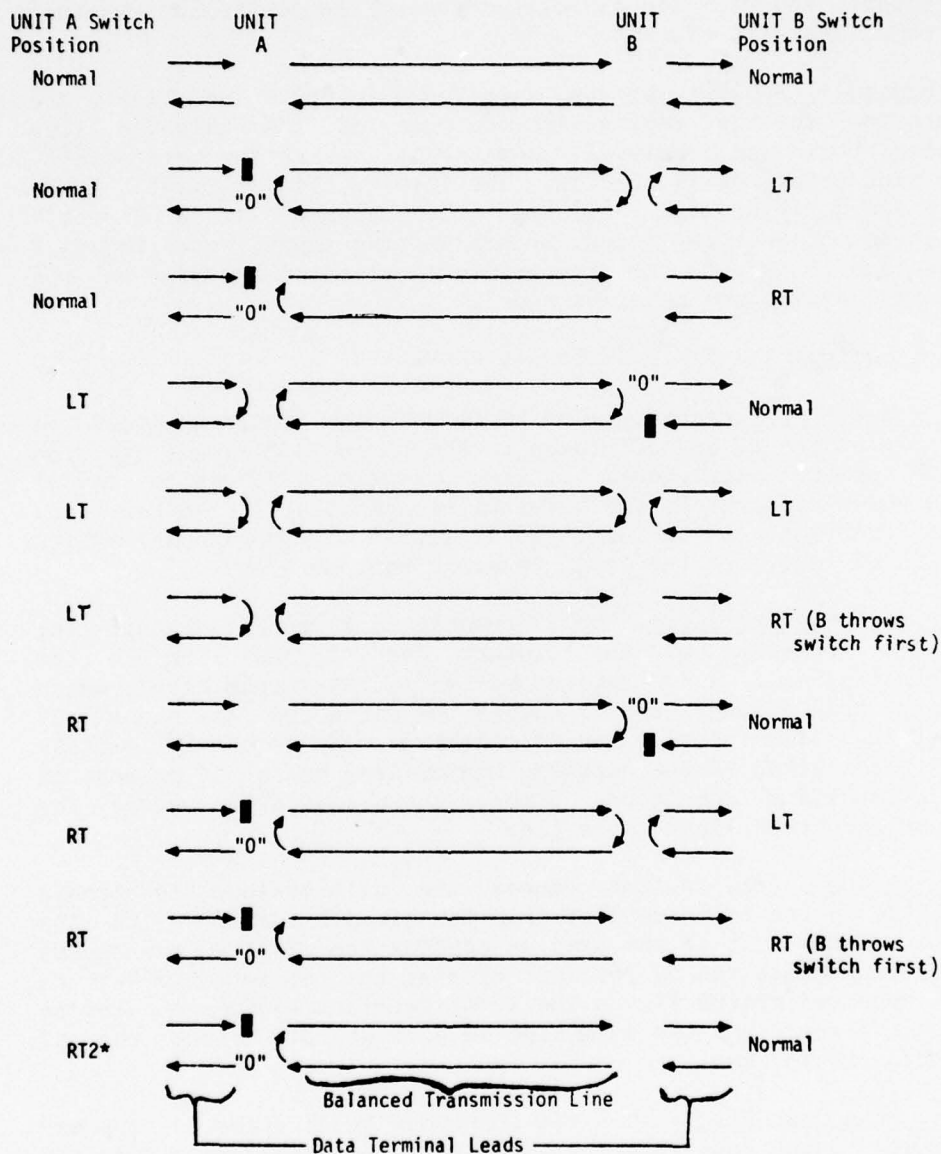
LT Position & Indicator- The LT (local test) function loops the signals on the SD and SCT leads to the RD and SCR leads to the data terminal equipment. It also transmits a "1" on the status lead which disconnects the terminal equipment at the other end. This function can be initiated by either the front panel switch or the LT lead from the local terminal equipment.

RT Position & Indicator- The RT (remote test) function loops the signals received at the distant end of the link to the originating end. A "1" is transmitted on the status lead which causes the distant end to return the clock and data signals it receives. This function can be initiated only by the RT switch. It is inhibited if the received status lead has a "1" present on it or the RT2 switch is on. Both of these conditions cause the "Other End Test" light to be lit.

RT2 Switch- This switch causes the unit to loop the signals received on the balanced line from the distant end back to the distant end. It is the same as setting the LT-RT switch on the distant modem to the RT position causing the receipt of a "1" on the received status line. The local terminal equipment receives a clock signal, but the data line is held at "0" unless the LT function is invoked.

Other End Down Light- This red LED comes on if there is no power received on the receive status line from the other end. This can be caused by the other end having no power or being disconnected. The light being off is not a guarantee that the clock and data lines are secure, but it does indicate the common occurrences of power shutoff and connector removal.

Signal Flow for Various Switch Positions



NOTES: * -RT2 allows the user at unit A to simulate the activation of the RT switch on unit B without going to location B.

"0"-A zero is transmitted on the data lead. The clock lead receives the local clock.

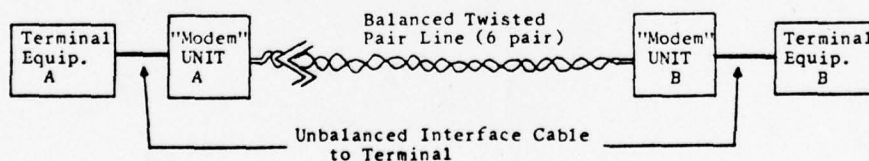
■ -The signal is terminated at this point.

-No marking between the arrows indicates the signal passes straight through in both directions.

2.1 Signal Flow Between Two Interconnected Units

Two modem replacement units are typically interconnected as shown in the interconnection diagram on the next page. The signal flow between the two units for the various front panel switch settings is shown on the following page. The switch referred to in the right and left hand columns is the LT-RT Switch. The last entry in the column for unit A is for the RT2 switch in the ON position and the LT-RT Switch in the NORMAL position. Note also the fact that the states of the switches on the two modem units do not completely determine the state of the system. The switch that was thrown first has priority. The remote test (RT) initiated by unit B prevents unit A from also performing a remote test until unit B switches back to NORMAL. This would be observed by an operator at unit A as follows:

- a) Unit B is switched to remote test (RT) which is indicated by the Other End Test light on the panel of unit A.
- b) The operator at unit A moves the LT-RT switch to the RT position, but the RT indicator light does not come on because it is inhibited by the Other End Test.
- c) Unit B is switched back to NORMAL thus extinguishing the Other End Test light and enabling the remote test and its RT indicator light.



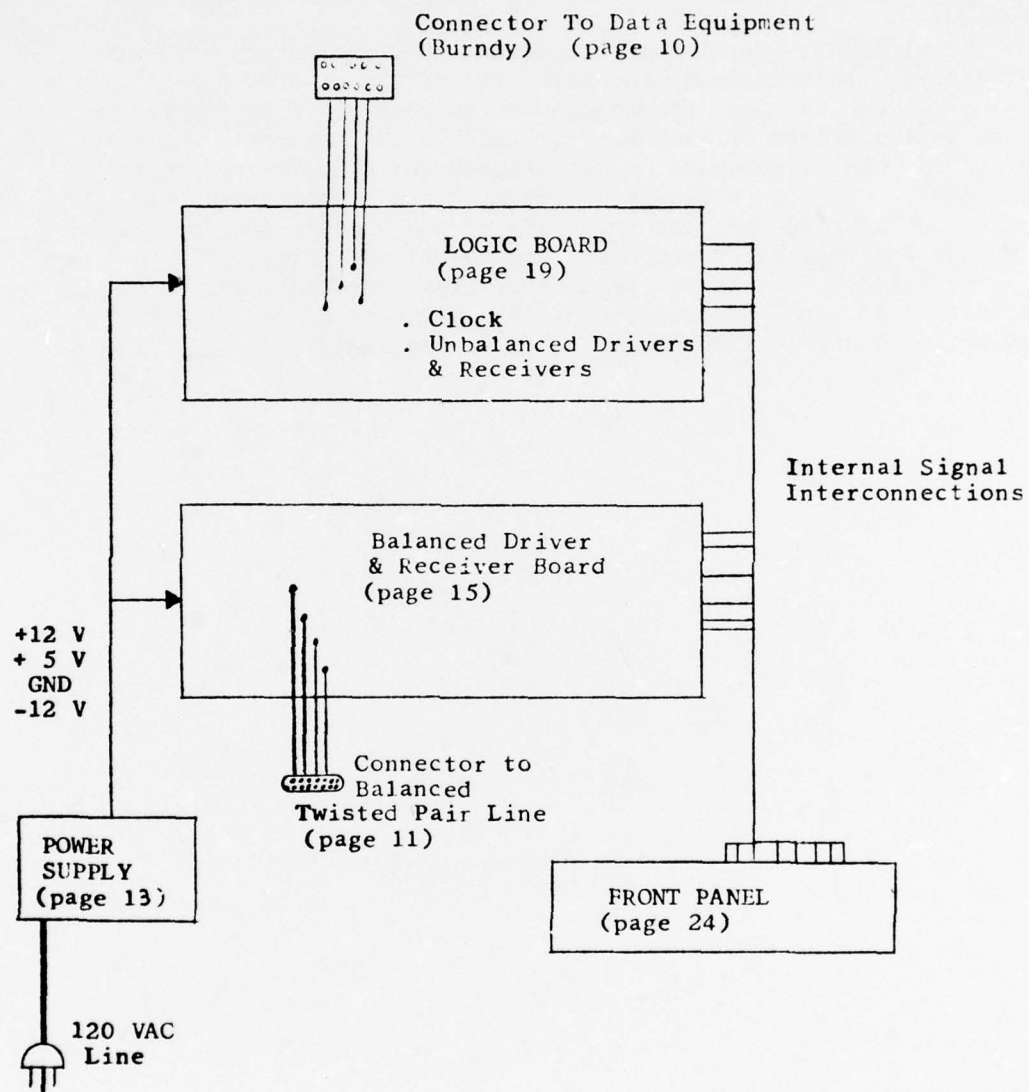
TWO INTERCONNECTED UNITS

This section contains the schematic diagrams and layout details for the modem replacement units. The previous page shows various views of the unit and the following two pages show the wiring interconnections and physical layout of the unit. The details for each subunit start on the pages indicated on the diagram.

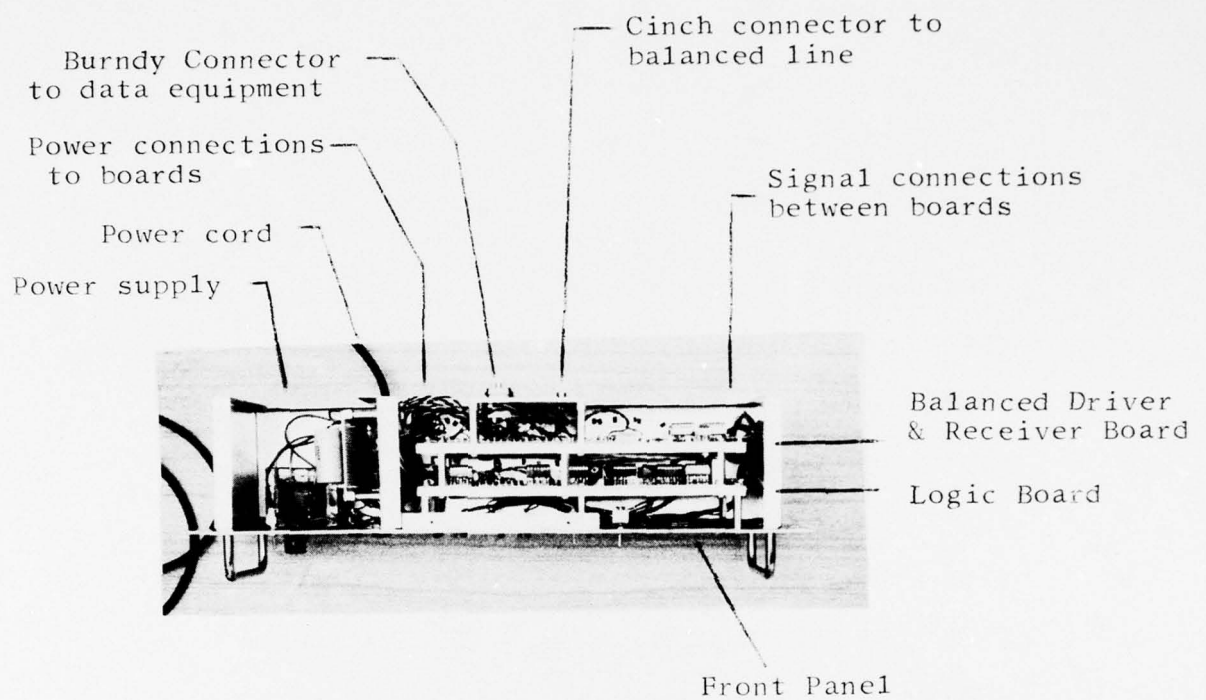
The wiring to the circuit boards are in three groups. First is the power connections on the left side of the board. Second is the wires to the connectors on the rear panel coming from points in the middle of each board. Last is the internal signal wiring on the right-hand side of each board and going to the front panel. The power supply, which also has front panel test points is located on the left side of the chassis and is both logically and physically separate from the signal wiring.

The circuit diagrams show a typical section for the replicated drivers and receivers, but show each of the physical connection points located on the board to aid signal tracing.

PRECEDING PAGE BLANK NOT FILMED



INTERCONNECTION OF BOARDS WITHIN UNIT



PHYSICAL LAYOUT OF "MODEM REPLACEMENT" UNIT

Connector to Local Terminal Equipment

The connector on the rear of the chassis is a Burndy MD12 MXR-8T. It is a multiple coaxial type and costs about \$75.00.

Pin Assignments for connector

Pin	Function
C	(CS) Clear to send
D	(SR) Send Request
E	(SD) Send Data
F	(DSR) Data Set Ready
G	(LT) Local Test
J	(SCT) Serial Clock Transmit (50 KHz square wave)
K	(RD) Receive Data
L	(SCR) Serial Clock Receive (50 KHz square wave)
M	(AGC) AGC Lock (Indicates other end is up)

For further information see the Bell System Technical Reference "Wideband Data Stations, 303 Type," August 1966.

Connector for Balanced Line
Between Modem Units

Connector on rear of chassis is a Cinch DA15-S. One should use a Cinch DA15-P to mate with it. A plastic hood to go with the connector should also be ordered (Cinch DA-51225-1).

The pin connections are as follows for the connector on the rear of the chassis.

Function	Pin Number	
Transmit Clock	1	2
	2	3
Transmit Data	1	4
	2	5
Transmit Status	1	6
	2	7
Receive Clock	1	10
	2	11
Receive Data	1	12
	2	13
Receive Status	1	14
	2	15

WIRING AT STANFORD
(ERL 317A to SUMEX S-101 in Medical Center)

Connector for Bell 303 modem Replacement
(twisted pair size)

6 Pair Beldfoil Shielded cable from ERL 317A to
S-101 in Medical Center (SUMEX)

Connector for cable

Cinch DA-15P connector (1 each end)
DA-19678-1 shell (1 each end)
D20419 screws & clamp (2 each end)

Pin Numbering for wires

Pin Numbering for wires		Connector		Wire Pair		
S-101		Pin Number				
		S-101	ERL 317A			ERL 317A
Transmit clock	1	2	10	Blk		Receive Clock
	2	3	11	Brn		
Receive clock	1	10	2	Blk		Transmit Clock
	2	11	3	Red		
Transmit Data	1	4	12	Blk		Receive Data
	2	5	13	Yel		
Receive Data	1	12	4	Blk		Transmit Data
	2	13	5	Wht		
Transmit Status	1	6	14	Blk		Receive Status
	2	7	15	Blu		
Receive Status	1	14	6	Blk		Transmit Status
	2	15	7	Grn		
Shields		1, 8	1, 8			

Shields 1, 8 1, 8

Cable Number from ERL 317A → B061-015

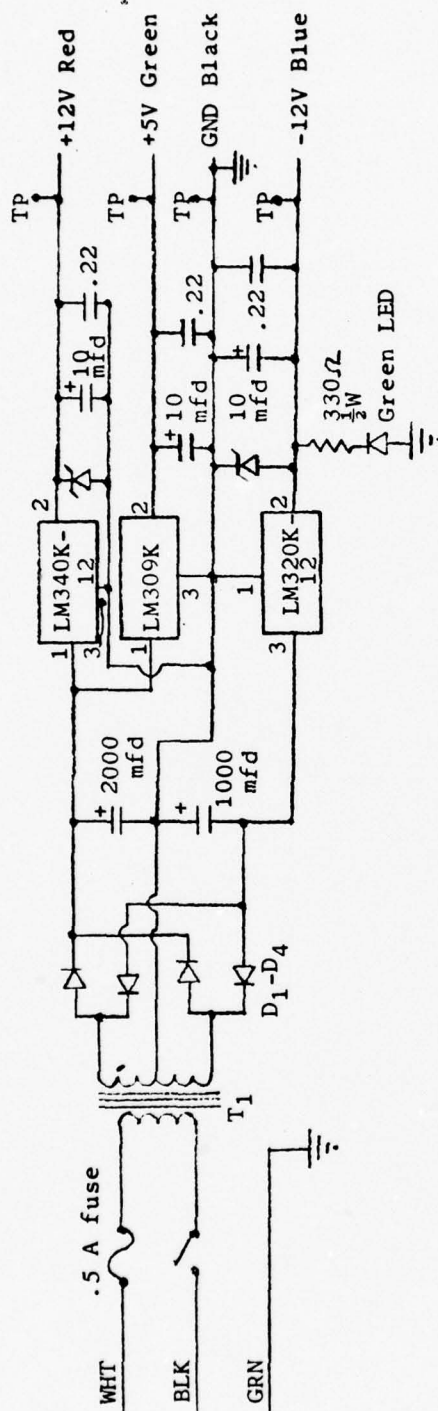
Blk-Blu ↔ Blk-Red
Blk-Yel ↔ Blk-Wht
Blk-Brn ↔ Blk-Grn
Blk-Org ↔ Blk-Blu
Red-Wht ↔ Blk-Yel
Red-Grn ↔ Blk-Brn

Jumper Wiring in ERL 317A
Box Number BTB-12

B061-015 6 pr. cable to connector in ERL 317A

14 μ S Round trip time (i.e. \approx 4,000 feet one way)

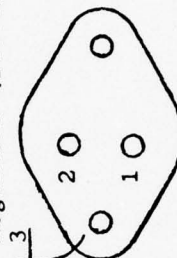
6-30-75



Notes:

1. D₁-D₄ are 1N4002
2. T₁ is 120 volt primary
26.8 volt center tapped
secondary at 1 ampere.
Triad F40X or equiv.
3. Zener diodes are 15V $\frac{1}{2}$ watt.
1N5245B
4. TP - Front panel test point
5. No load voltage on input to regulators is ± 22 volts.
6. Maximum output current is 1 ampere on any supply.

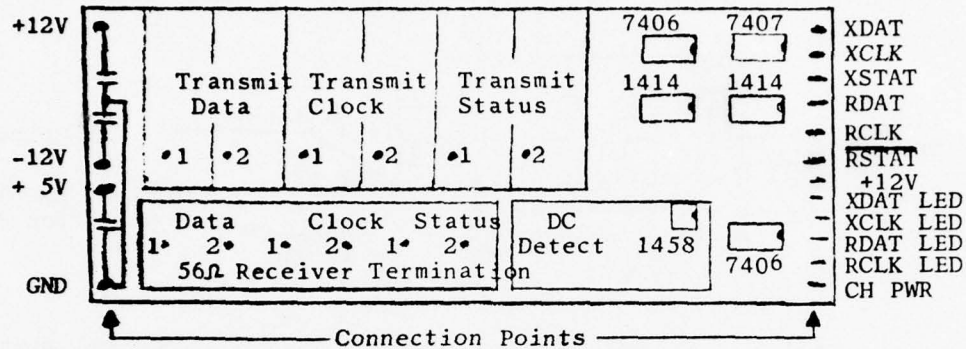
Regulator (Bottom view)



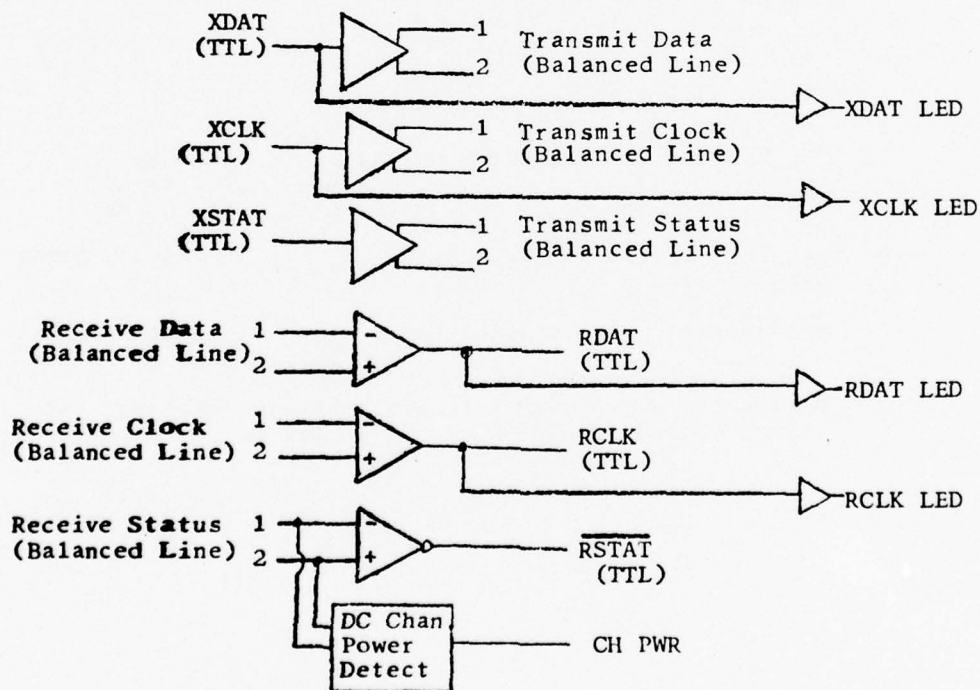
3.1 Power Supply

3.2

Balanced Driver & Receiver Board

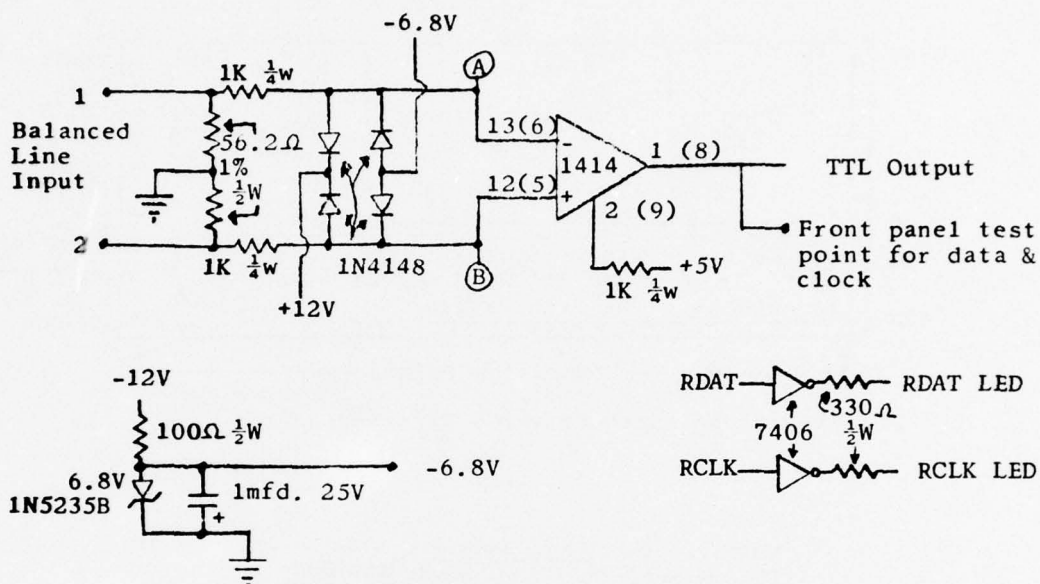


Top View of Balanced Driver & Receiver Board



Functional Diagram of Board

Balanced Receivers

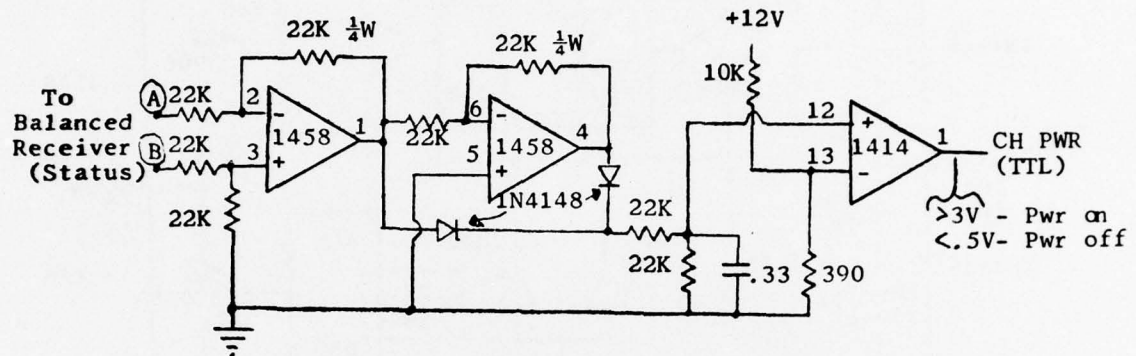


Notes:

1. Other pin connections for MC1414
 - pin 11 - GND
 - pins 3,10- +12V
 - pins 7,14- -6.8V
2. Input wires are reversed on status line to obtain RSTAT output.
3. Approximate power consumption:

+12V - 36 mA	}	(3 units)
-12V - 52 mA		
4. Points A & B are used only in the status receiver and are connected to the DC Channel Power Detect circuit.

DC Channel Power Detection

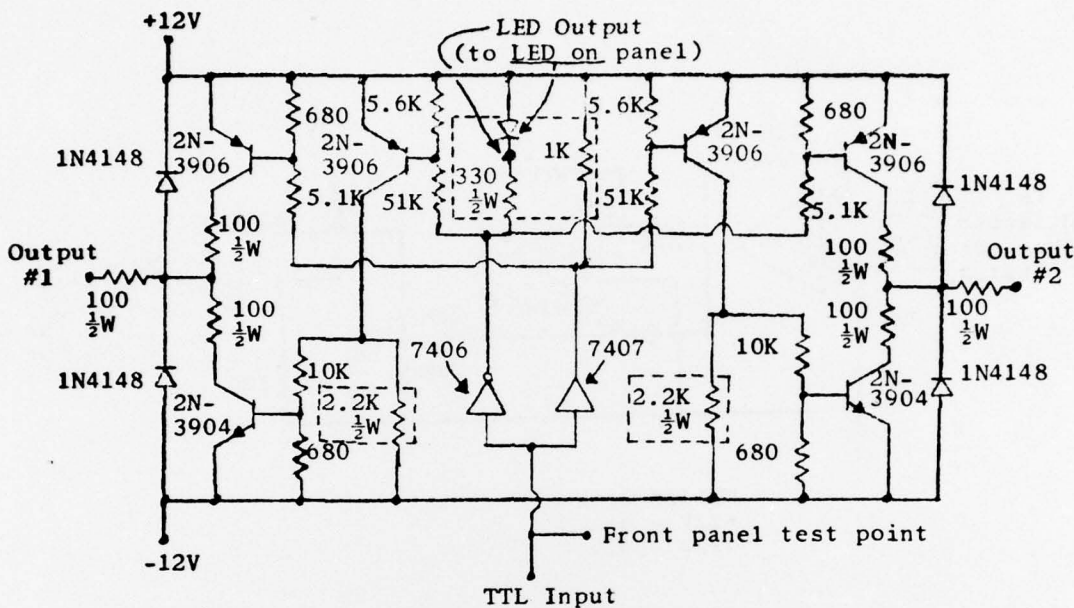


MC1458 Power
+12V - pin 8
-12V - pin 4

All resistors are $\frac{1}{4}$ watt.

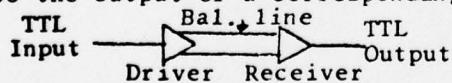
Output is a "1" if the differential input is greater than .5 volt.

Balanced Driver



Notes:

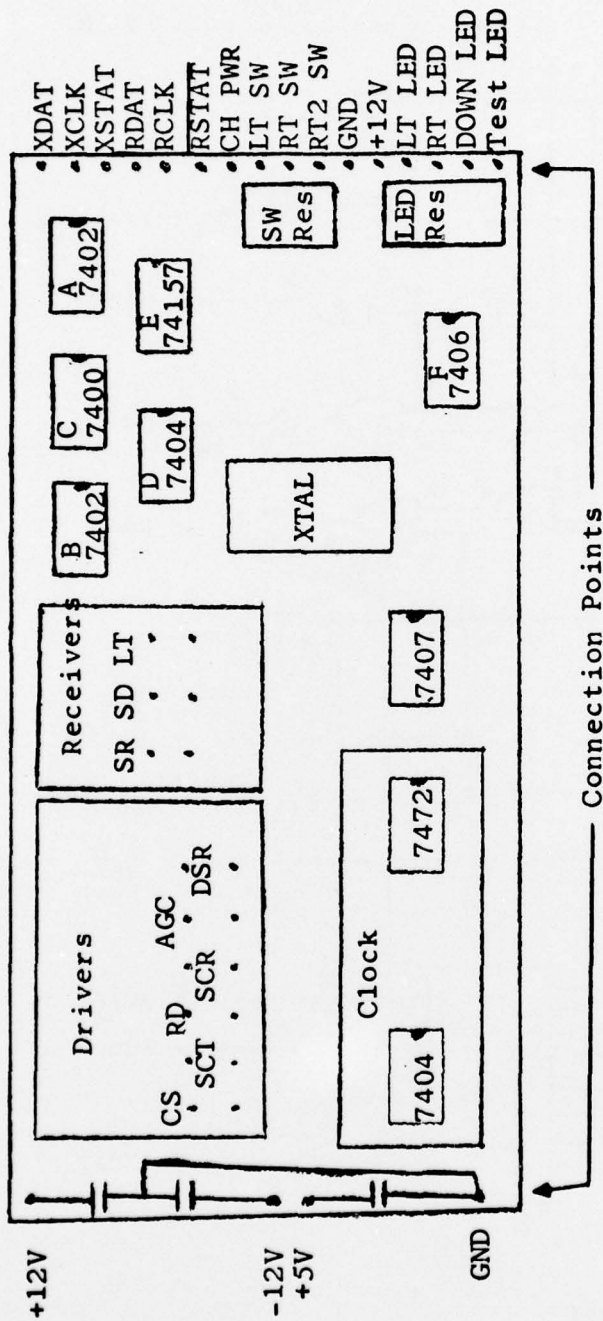
1. Approximate power consumption for 3 drivers:
+12V - 160 mA
+ 5V - 70 mA
-12V - 160 mA
2. Parts enclosed in dotted lines are not used in the driver for the status line. They provide faster switching and front panel indication.
3. The approximate time delay from the TTL input of the driver to the output of a corresponding receiver unit is 300 nS.



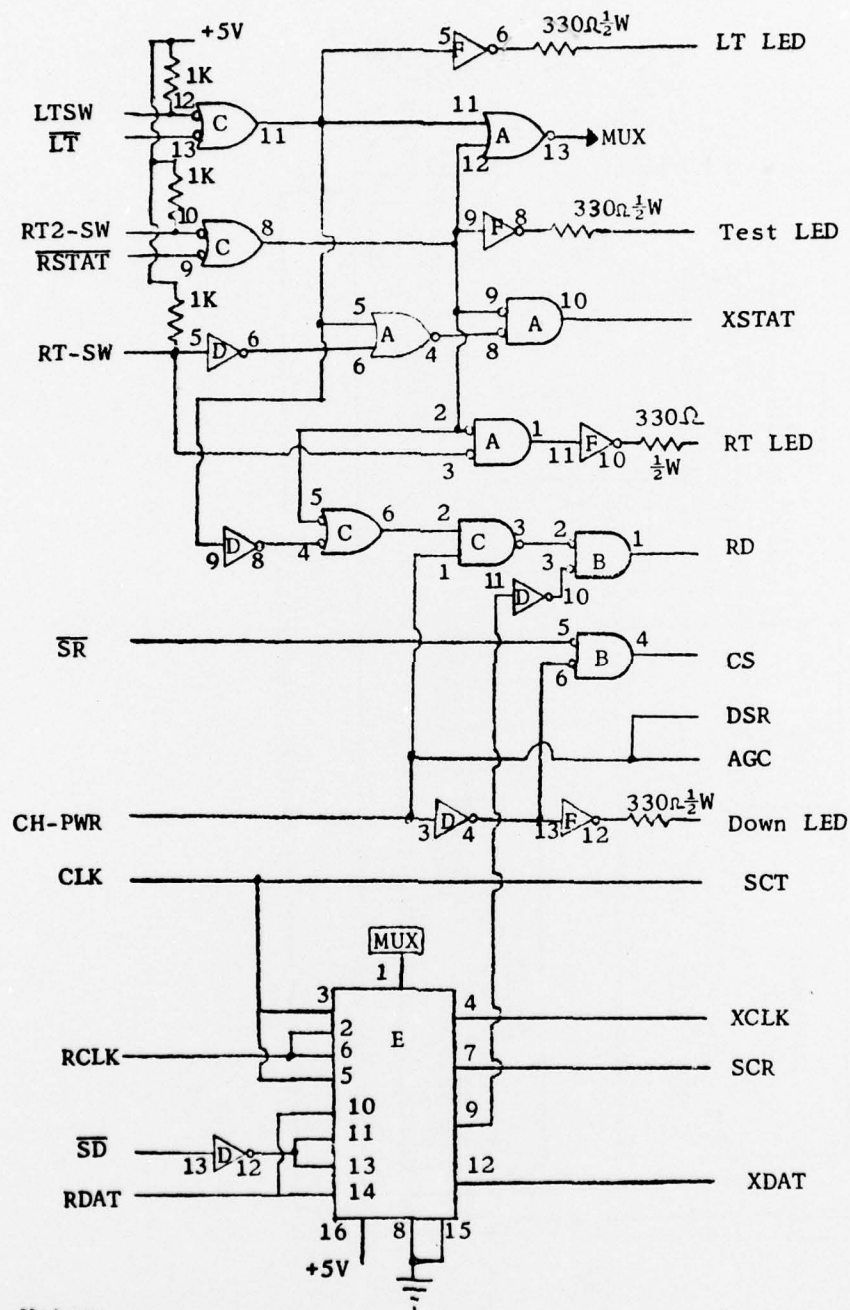
4. Resistors are $\frac{1}{4}$ watt unless otherwise indicated.
5. The signal on each output wire is either + or - 12 volts in series with a 200 ohm resistor.
6. The polarity of the outputs for a given input are:

TTL Input	Outputs	
	#1	#2
0 < .5V	+	-
1 > 2 V	-	+

- 7. The outputs are short circuit proof and diode protected.**



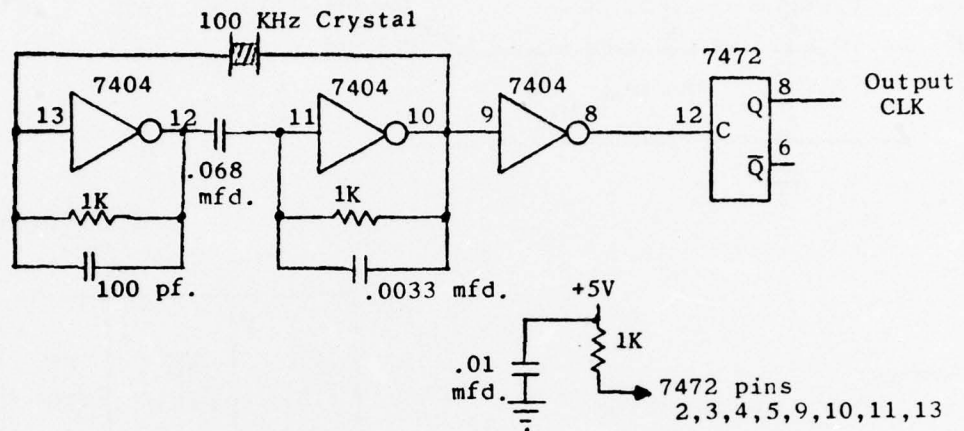
Logic



Notes:

- | | |
|---------|----------|
| A- 7402 | D- 7404 |
| B- 7402 | E- 74157 |
| C- 7400 | F- 7406 |

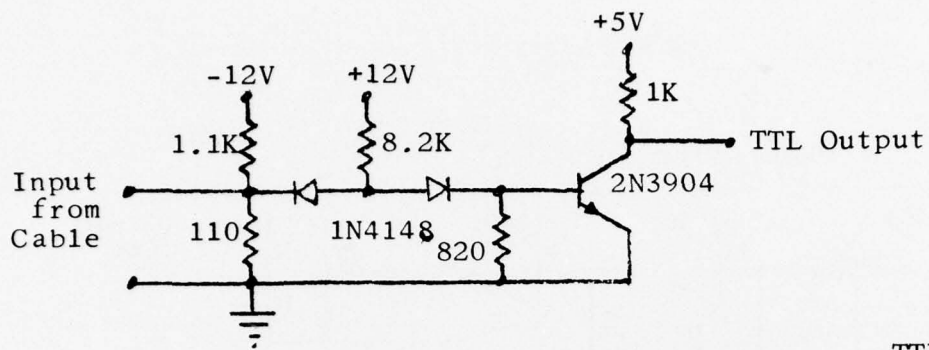
50 KHz Clock



Notes:

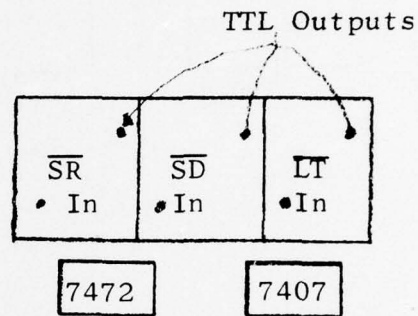
1. Power consumption: +5V - 30 mA
2. All resistors $\frac{1}{4}$ watt.

Single Ended Cable Receivers



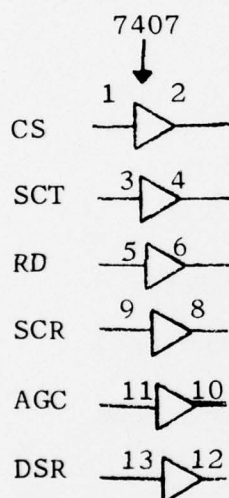
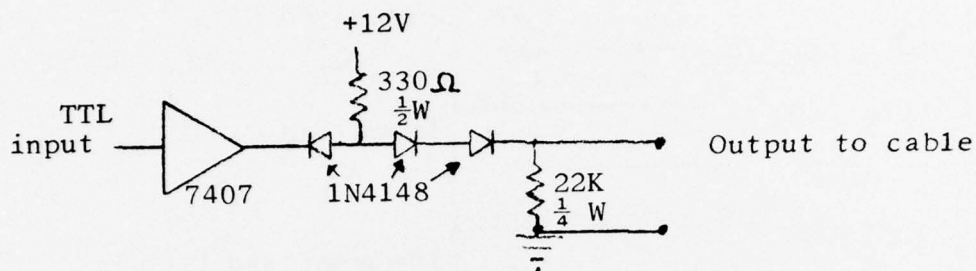
Notes:

1. Power Consumption:
 +12V- 4.5mA
 + 5V- 15 mA
 -12V- 30 mA
2. All resistors are $\frac{1}{4}$ watt.
3. +23 mA \rightarrow TTL "0"
 0 mA \rightarrow TTL "1"

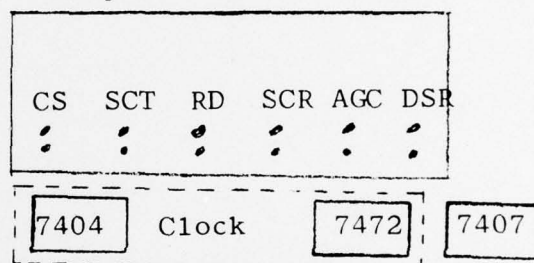


Board Layout (top view)

Single Ended Cable Drivers

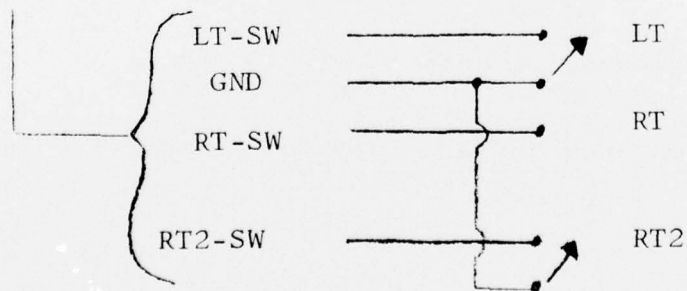
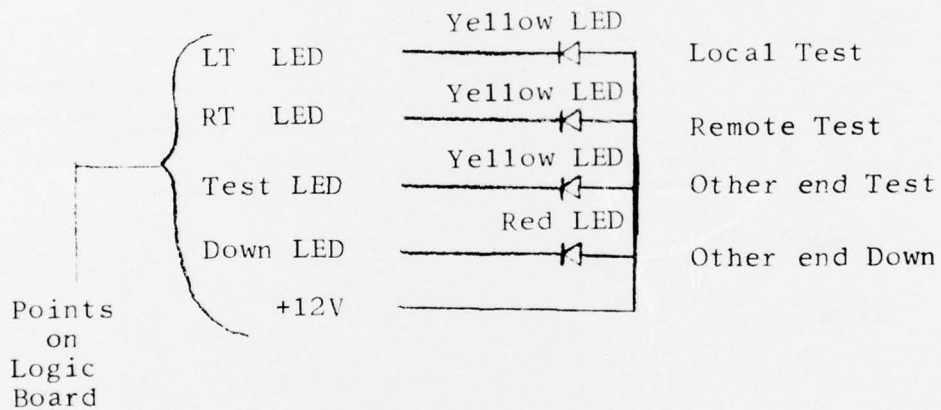
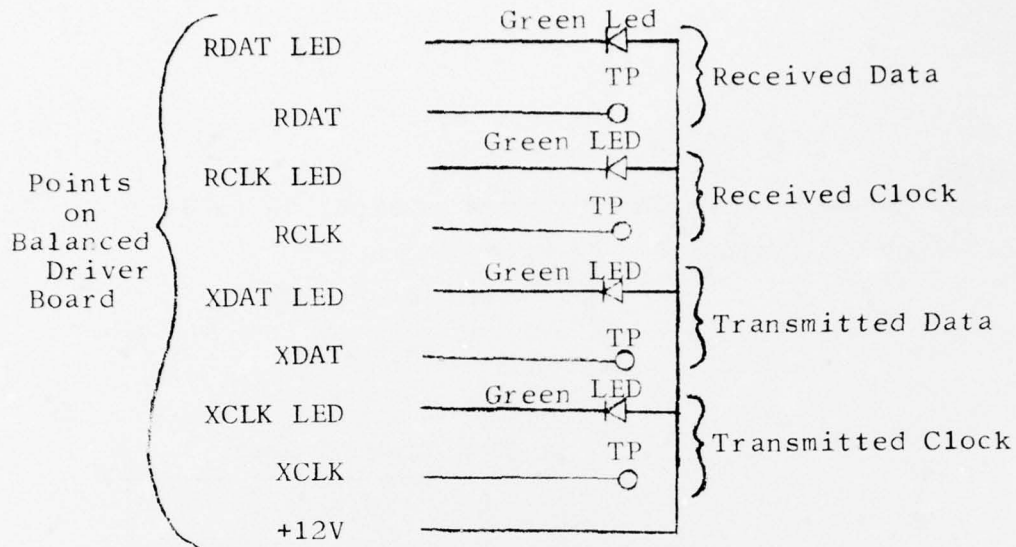


Top View of Board



Notes:

1. Power consumption for 6 units: +12V - 200 mA
+ 5V - 40 mA
2. Output is 25 mA into 100 ohm load for a logic "1" input.



ARPA DISTRIBUTION

ARPA

Director (2 copies)
ATTN: Program Management
Advanced Research Projects Agency
1400 Wilson Boulevard
Arlington, VA 22209

Defense Documentation Center (DDC)
(12 copies)
Cameron Station
Alexandria, VA 22314

ARPA/IPT
1400 Wilson Boulevard
Arlington, VA 22209

Dr. Robert Kahn
Mr. Steven Walker

Bolt Beranek and Newman Inc.
50 Moulton Street
Cambridge, MA 02138

Mr. Jerry D. Burchfiel
Mr. R. Clements
Mr. A. McKenzie
Mr. J. McQuillan
Mr. R. Tomlinson
Mr. D. Walden

Cabledata Associates

Mr. Paul Baran
Cabledata Associates, Inc.
701 Welch Road
Palo Alto, CA 94304

California, University - Irvine

Prof. David J. Farber
Department of Information and
Computer Science
University of California
Irvine, CA 92717

California, University - Los Angeles

Professor Gerald Estrin
Computer Sciences Department
School of Engineering and Applied Science
University of California
Los Angeles, CA 90024

Professor Leonard Kleinrock
Computer Sciences Department
3732 Boelter Hall
University of California
Los Angeles, CA 90024

Mr. William Naylor
3804-D Boelter Hall
University of California
Los Angeles, CA 90024

Collins Radio Group
1200 N. Alma Road
Richardson, Texas 75080

Mr. Don Heaton
Mr. Frederic Weigl

Defense Communications Engineering Center

Dr. Harry Helm
DCEC, R-520
1860 Wiehle Avenue
Reston, VA 22090

Hawaii, University of

Professor Norman Abramson
The ALOHA System
2540 Dole Street, Holmes 486
University of Hawaii
Honolulu, Hawaii 96822

Illinois, University of

Mr. John D. Day
University of Illinois
Center for Advanced Computation
114 Advanced Computation Building
Urbana, Illinois 61801

Institut de Recherches d'Informatique
et d'Automatique (IRIA)
Reseau Cyclades
78150 Rocquencourt
France

Mr. Louis Pouzin
Mr. Hubert Zimmerman

Information Sciences Institute
University of Southern California
4676 Admiralty Way
Marina del Rey, CA 90291

Mr. Steven D. Crocker
Mr. Keith Uncapher

London, University College

Prof. Peter Kirstein
University College London
Department of Statistics &
Computer Science
43 Gordon Square
London WC1H 0PD, England

Massachusetts Institute of Technology

Dr. J. C. R. Licklider
MIT
Project MAC - PTD
545 Technology Square
Cambridge, MA 02139

Mitre Corporation

Mr. Michael A. Padlipsky
MITRE Corporation
P. O. Box 208
Bedford, MA 01730

Network Analysis Corporation
Beechwood, Old Tappan Road
Glen Cove, New York 11542

Mr. Wushow Chou
Mr. Howard Frank

National Bureau of Standards

Mr. Robert P. Blanc
National Bureau of Standards
Institute for Computer Sciences
and Technology
Washington, D. C. 20234

Mr. Ira W. Cotton
National Bureau of Standards
Building 225, Room B216
Washington, D. C. 20234

National Physical Laboratory
Computer Science Division
Teddington, Middlesex, England TW11 0LW

Mr. Derek Barber
Dr. Donald Davies
Mr. Roger Scantlebury
Mr. P. Wilkinson

National Security Agency
9800 Savage Road
Ft. Meade, MD 20755

Mr. Dan Edwards
Mr. Ray McFarland

Norwegian Defense Research Establishment
P. O. Box 25
2007 Kjeller, Norway

Mr. Yngvar G. Lundh
Mr. P. Spilling

Oslo, University of

Prof. Dag Belsnes
EDB-Sentret
University of Oslo
Postbox 1059
Blindern, Oslo 3, Norway

Rand Corporation
1700 Main Street
Santa Monica, CA 90406

Mr. S. Gaines
Dr. Carl Sunshine

Rennes, University of

M. Gerard LeLann
Reseau CYCLADES
U.E.R. d'Informatique
B. P. 25A
35031-Rennes-Cedex, France

Stanford Research Institute
333 Ravenswood Avenue
Menlo Park, CA 94025

Ms. E. J. Feinler
Augmentation Research Center

Dr. Jon Postel (4 copies)
Augmentation Research Center

Mr. D. Nielson, Director
Telecommunication Sciences Center

Dr. David Retz
Telecommunication Sciences Center

System Development Corporation

Dr. G. D. Cole
System Development Corporation
2500 Colorado Avenue
Santa Monica, CA 90406

Telenet Communications, Inc.
1666 K Street, N. W.
Washington, D. C. 20006

Dr. Holger Opderbeck
Dr. Lawrence G. Roberts
Dr. Barry Wessler

Defense Communication Agency

Dr. Franklin Kuo
4819 Reservoir Drive
Washington, D. C. 20007

Xerox Palo Alto Research Center
3333 Coyoto Hill Road
Palo Alto, CA 94304

Mr. David Boggs
Dr. R. Metcalfe
Mr. John Shoch
Dr. William R. Sutherland

Stanford University

Mr. Ronald Crane, Digital Systems Laboratory
Mr. Yogen Dalal " " "
Ms. Judith Estrin " " "
Prof. Michael Flynn " " "
Mr. Richard Karp " " "
Dr. John Linvill, Electrical Engineering
Mr. James Mathis, Digital Systems Laboratory
Mr. Darryl Rubin " " "
Mr. Wayne Warren " " "

COMPUTER FORUM MAILING LIST - 1976

BELL LABORATORIES

Dr. Elliot N. Pinson, Head
Computer Systems Research Department
Bell Laboratories
600 Mountain Avenue
Murray Hill, New Jersey 07974

Dr. Mark Rockkind
Bell Laboratories
600 Mountain Avenue
Murray Hill, New Jersey 07974

Mr. Kenneth L. Thompson
1103 High Court
Berkeley, California 94708

B N R, Inc.

Mr. Alex Curran, President
B N R, Inc.
3174 Porter Drive
Palo Alto, California 94304

Mr. Barry Gordon
B N R, Inc.
3174 Porter Drive
Palo Alto, California 94304

Mr. Alan Chapman
B N R, Inc.
3174 Porter Drive
Palo Alto, California 94304

BURROUGHS CORPORATION

Dr. Wayne T. Wilner
Burroughs Corporation
3978 Sorrento Valley Boulevard
San Diego, California 92121

Mr. John Mazola
Burroughs Corporation
25725 Jeronimo Road
Mission Viejo, California 92675

Mr. Louis de Bartelo
Burroughs Corporation
1671 Reynolds
Irvine, California 92714

GENERAL ELECTRIC COMPANY

Dr. Richard L. Shuey
General Electric Research and
Development Center
P.O. Box 8
Schenectady, New York 12301

Mr. J. T. Duane, Manager
Special Purpose Computing Center
General Electric Company
1285 Boston Avenue
Bridgeport, Connecticut 06602

Mr. Ronald S. Taylor
General Electric Company
175 Curtner Avenue
San Jose, California 95125

GENERAL MOTORS CORPORATION

Dr. George C. Dodd, Assistant Head
Computer Science Department
General Motors Research Laboratories
General Motors Technical Center
Warren, Michigan 48090

Dr. Joseph T. Olsztyń
Computer Science Department
General Motors Research Laboratories
General Motors Technical Center
Warren, Michigan 48090

Dr. James Thomas
Computer Science Department
General Motors Research Laboratories
General Motors Technical Center
Warren, Michigan 48090

HEWLETT-PACKARD

Mr. Don Senzig
Hewlett-Packard Laboratories
Building 18
1501 Page Mill Road
Palo Alto, California 94304

Dr. J. R. Duley
HPL/ERL
3500 Deer Creek Road
Palo Alto, California 94304

COMPUTER FORUM MAILING LIST - 1976

(continued)

HEWLETT-PACKARD (continued)

Mr. Stephen Walther
HPL/ERL
3500 Deer Creek Road
Palo Alto, California 94304

HUGHES AIRCRAFT COMPANY

Mr. R. Eugene Allen
Hughes Aircraft Company
Bldg. 604, M.S. D-222
P.O. Box 3310
Fullerton, California 92634

Mr. Thomas J. Burns
Hughes Aircraft Company
Bldg. 390, M.S. 2007
P.O. Box 92919
Los Angeles, California 90009

Hughes Aircraft Company
Attn: B. W. Campbell 6/E110
Company Technical Documents Center
Centinela and Teale Streets
Culver City, California 90230

IBM

Dr. Leonard Y. Liu, Manager
Computer Science
International Business Machines Corporation
K51-282, 5600 Cottle Road
San Jose, California 95193

Mr. Harry Reinstein
International Business Machines Corporation
1501 California Avenue
Palo Alto, California 94303

Dr. Donald Frazer
IBM Watson Research Center
P.O. Box 218
Yorktown Heights, New York 10598

MICROTECHNOLOGY CORPORATION

Mr. Fred Buelow
Microtechnology Corporation
224 N. Wolfe Road
Sunnyvale, California 94086

Mr. Naoya Ukai
Microtechnology Corporation
224 N. Wolfe Road
Sunnyvale, California 94086

Mr. John J. Zasio
Microtechnology Corporation
224 N. Wolfe Road
Sunnyvale, California 94086

SIEMENS AG

Mr. Dr. Jan Witt
Siemens AG
Zentrale Forschung und Entwicklung
FL SAR
Hofmannstr. 51
8000 München 70, Germany

Mr. Harold Fritzsche
Siemens AG
Zentrale Fertigungsaufgaben
FTE 3 Aut 2
Schertlinstr. 8
8000 München 70, Germany

Mr. Volker Haberland
Siemens AG
Zentrale Fertigungsaufgaben
FTE 3 Aut 23
Schertlinstr. 8
8000 München 70, Germany

XEROX CORPORATION

Dr. Jerome Elkind, Manager
Computer Science Laboratory
Xerox Corporation
Palo Alto Research Center
3180 Porter Drive
Palo Alto, California 94303

COMPUTER FORUM MAILING LIST - 1976

(continued)

XEROX CORPORATION (continued)

Mr. Robert Taylor, Principal Scientist
Computer Science Laboratory
Xerox Corporation
Palo Alto Research Center
3180 Porter Drive
Palo Alto, California 94303

Dr. Butler Lampson
Xerox Corporation
Palo Alto Research Center
3180 Porter Drive
Palo Alto, California 94303

STANFORD UNIVERSITY

Professor Edward J. McCluskey (2)
Director, Digital Systems Laboratory

Computer Science Department

Computer Science Library (2)

Digital Systems Laboratory Library (5)

Engineering Library (2)

IEEE Computer Society Repository (2)