

AD-A034 989

VIRGINIA UNIV CHARLOTTESVILLE RESEARCH LABS FOR THE--ETC F/G 11/6
MICROSTRUCTURAL INVESTIGATION OF POLYCRYSTALLINE IRON WHISKERS.(U)
DEC 76 D S LASHMORE, W A JESSER
UVA/525321/MS76/101

N00014-75-C-0855
NL

UNCLASSIFIED

1 OF 1
AD
A034989



END

DATE
FILMED
3-77

ADA 034989



12
NW

RESEARCH LABORATORIES FOR THE ENGINEERING SCIENCES

SCHOOL OF ENGINEERING AND
APPLIED SCIENCE

University of Virginia

Charlottesville, Virginia 22901

9

Technical Report,

6

MICROSTRUCTURAL INVESTIGATION OF POLYCRYSTALLINE
IRON WHISKERS

10

By

D. S. Lashmore, W. A. Jesser, D. M. Schladitz,
H. J. Schladitz, H. G. F. Wilsdorf

15

Contract No. N00014-75-C-0855

12 16p.

14

Report No. UVA/525321/MS76/101

11

December 1976

COPY AVAILABLE TO DDC DOES NOT
PERMIT FULLY LEGIBLE PRODUCTION

Copy available to DDC does not
permit fully legible reproduction

DDC
RECEIVED
JAN 31 1977
RECEIVED

366 870

RESEARCH LABORATORIES FOR THE ENGINEERING SCIENCES

Members of the faculty who teach at the undergraduate and graduate levels and a number of professional engineers and scientists whose primary activity is research generate and conduct the investigations that make up the school's research program. The School of Engineering and Applied Science of the University of Virginia believes that research goes hand in hand with teaching. Early in the development of its graduate training program, the School recognized that men and women engaged in research should be as free as possible of the administrative duties involved in sponsored research. In 1959, therefore, the Research Laboratories for the Engineering Sciences (RLES) was established and assigned the administrative responsibility for such research within the School.

The director of RLES—himself a faculty member and researcher—maintains familiarity with the support requirements of the research under way. He is aided by an Academic Advisory Committee made up of a faculty representative from each academic department of the School. This Committee serves to inform RLES of the needs and perspectives of the research program.

In addition to administrative support, RLES is charged with providing certain technical assistance. Because it is not practical for each department to become self-sufficient in all phases of the supporting technology essential to present-day research, RLES makes services available through the following support groups: Machine Shop, Instrumentation, Facilities Services, Publications (including photographic facilities), and Computer Terminal Maintenance.

Technical Report

MICROSTRUCTURAL INVESTIGATION OF POLYCRYSTALLINE
IRON WHISKERS

By

D. S. Lashmore, W. A. Jesser, D. M. Schladitz,
H. J. Schladitz, and H. G. F. Wilsdorf

Department of Materials Science
RESEARCH LABORATORIES FOR THE ENGINEERING SCIENCES ✓
SCHOOL OF ENGINEERING AND APPLIED SCIENCE
UNIVERSITY OF VIRGINIA
CHARLOTTESVILLE, VIRGINIA

ADDITION for	
NTIS	White Section <input checked="" type="checkbox"/>
DOC	Diff Section <input type="checkbox"/>
UNANNOUNCED	Per ltr. <input type="checkbox"/>
JUSTIFICATION <i>on file.</i>	
BY	
DISTRIBUTION/AVAILABILITY CODES	
Dist.	AVAIL. and/or SPECIAL
A	

Report No. UVA/525321/MS76/101 ✓
December 1976

Copy No. 1

366870
LB

ABSTRACT

The microstructure of polycrystalline iron whiskers produced by chemical vapor decomposition in a magnetic field is found to consist of a core extending the length of the whiskers surrounded by a series of approximately cylindrical layers made up of particles whose diameters are about 1000 Å to 3000 Å. The grain size in both the core and the surrounding particles is found to be between 50 Å to 200 Å. The very high strength of these whiskers, 800 MPa, is considered a result of extreme grain refinement strengthening.

ANGSTROMS

1. INTRODUCTION

Polycrystalline metal whiskers have received surprisingly little attention in the scientific literature, certainly much less than single crystalline whiskers, in spite of the fact that they are beginning to play an important technological role. Specifically the whiskers, made by the Schladitz process¹⁻³, are now being produced in quantities for industrial application^{4,5}.

This present paper summarizes the first results of studies on polycrystalline iron whiskers produced in this country by the Schladitz process*. The present investigation expands upon and complements earlier investigations made overseas^{2,3,6,7,8}.

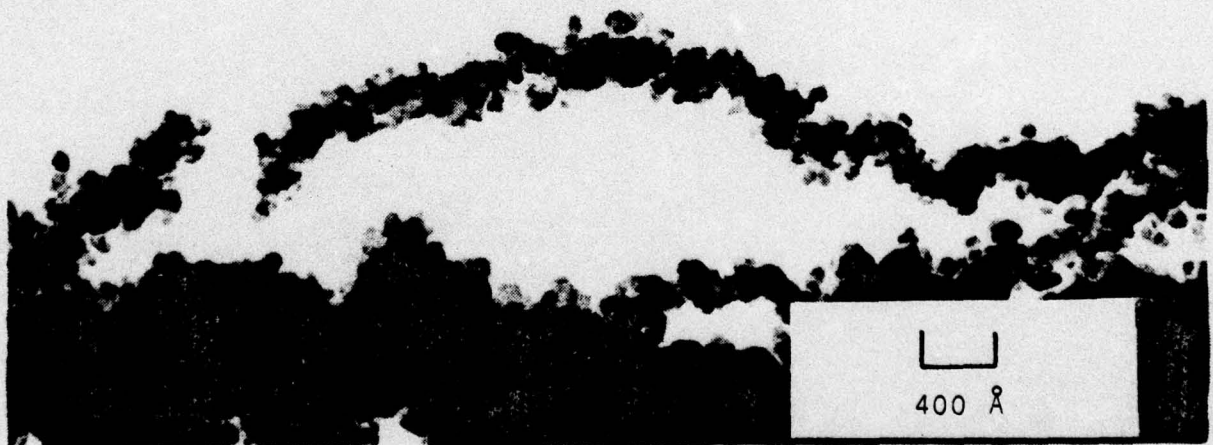


Figure 1 TEM micrograph of the polycrystalline core of an iron (steel) whisker showing crystal grains 50-200 Å in diameter ("primary" structure).

*These whiskers are known in Germany as Schladitz Whiskers.

II. DESCRIPTION OF WHISKER MATERIAL

Schladitz whiskers are produced through the thermal decomposition of a metal carbonyl in the presence of a magnetic field. In the present case, iron pentacarbonyl is used. Through the use of other suitable metal carbonyls, whiskers of nickel, molybdenum, titanium and chromium have been produced². A somewhat related experimental arrangement was reported by Bacigalupi⁹. As the major decomposition products of iron pentacarbonyl are iron and carbon monoxide, a significant amount of carbon is incorporated into the whiskers during their growth^{6,7}. A chemical analysis performed on whiskers made in this laboratory yields a carbon content of 1.5 wt% which is consistent with the earlier findings of Dawihl and Eicke⁶. Whiskers made here were also found by neutron activation analysis to contain trace amounts of molybdenum (130 $\mu\text{gms/gm}$) and chromium (40 $\mu\text{gms/gm}$). An X-ray analysis of these whiskers will be reported in the future, the principal result¹⁰ being that whiskers grown under "ideal" conditions consist of only α -iron and amorphous carbon; however, an oxide, Fe_3O_4 , is usually present along with some Fe_3C .

Whisker diameters have been found to increase with increasing reaction time and can be varied from say 1 micron or less to 30 microns or more. The growth times are of the order of a few minutes. The length to which the whiskers can grow on the other hand has been found to be both a function of production conditions as well as the geometry of the apparatus; whiskers longer than 10 mm have been produced.

The three most outstanding characteristics of Schladitz whiskers, which make them potentially so very useful, are firstly their large, controllable surface to volume ratio⁴, secondly, their high strength, which was found to be independent of whisker diameter³, and thirdly the fact that they are amenable to a considerable variety of metallurgical treatments to modify their properties in a desired direction, e.g. increasing their corrosion resistance, high temperature strength and others^{2,3,8}. Another advantage of these whiskers is the existence of a number of methods of handling the whisker to incorporate, or form them into useful macroscopic materials. One is greatly aided in this by the property that the whiskers do not lose their strength through handling.

III. MICROSTRUCTURE

The microstructural investigation conducted here on Schladitz iron (steel) whiskers is in substantial agreement with the results previously reported by Schladitz² and by Dawihl and Eicke^{6,7} and in addition offers some substantial insights into the microstructure.

Transmission electron microscopy (TEM) of whiskers at voltages between 100 kV and 500 kV indicates that at the first stages of growth single polycrystalline filaments are formed consisting of grains 50 Å to 200 Å across. Figure 1 is a TEM micrograph which shows this primary structure.

After the core has formed, the whiskers apparently thicken without much changing their length**. In the thickening stage, a secondary structure is formed surrounding the core region. This secondary structure is made up of small particles as shown in Figure 2. A cross-section through the whiskers reveals a concentric series of approximately circular rings each made up of a large number of particles. The particles are contiguously arranged in concentric cylindrical shells so that a cross-section along the whisker axis shows particles in an array parallel to the whisker axis. In earlier experiments this concentric structure was achieved in a most obvious form through the intermittent addition of other substances, such as nickel and/or molybdenum during whisker growth, thereby demonstrating conclusively (1) that the whiskers grow through the addition of material at their surface while maintaining their symmetry and (2) the possibility of doing sophisticated metallurgy with whiskers even during their growth².

Upon close inspection it was found that each of these concentric layers consists of a series of essentially α -iron polycrystalline particles 1000 Å to 3000 Å in diameter arranged in a circular fashion around the core. This arrangement of particles constitutes a secondary structure with the fine grains 50 Å to 200 Å being the primary structure. In Figure 3, optical

**Special techniques have recently been devised by one of the authors (H.J.S.) which also allows growth from the tip of the whiskers.

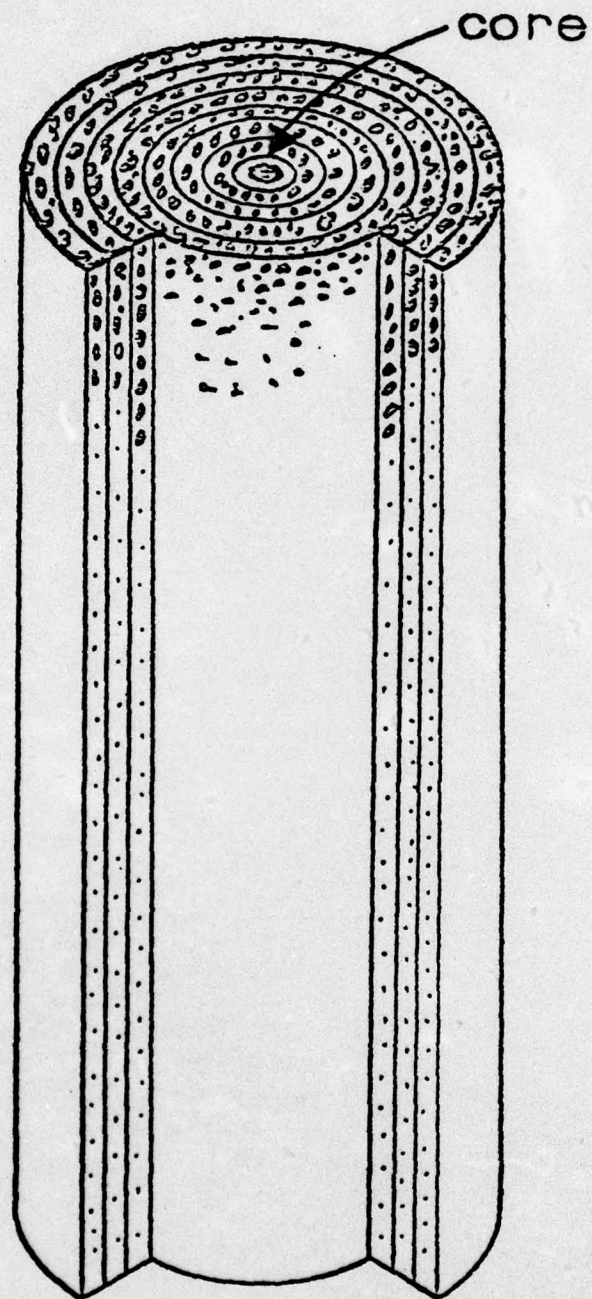


Figure 2 A schematic drawing of a cross-section through a whisker showing a series of concentric cylindrical shells made up of individual particles ("secondary" structure).

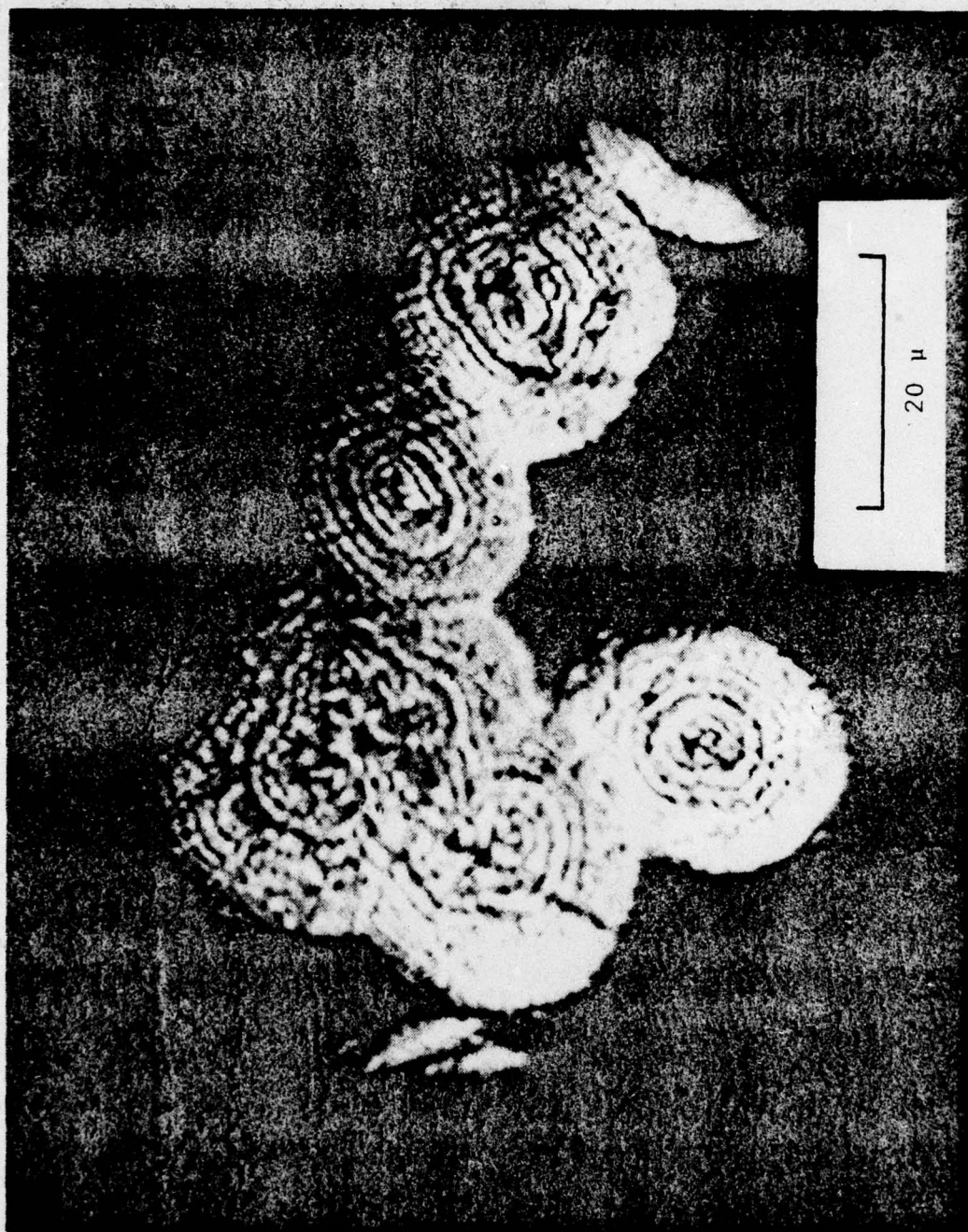


Figure 3 Optical micrograph of concentric ring structure.
The specimen is an iron (steel) whisker polished and
then etched with 2% NITOL.

metallographic sections of whiskers polished and etched with 2% NITOL reveal this structure quite well. These particles appear larger than 3000 Å because of diffraction effects. In Figure 4 a SEM micrograph of a similar whisker brings out the same type of structure as well as giving an accurate indication of the particle size.

Further evidence of these concentric shells of particles is shown in Figure 5 which is a TEM micrograph at 100 kV of whiskers electrochemically thinned. Whiskers grown in different parts of the reaction chamber have slightly different structural characteristics. This is probably due to slight inhomogeneities in both growth temperatures and composition throughout the reaction chamber; however, the overall secondary type of structure was found in whiskers grown throughout the chamber and was found to be independent of whisker diameter.

The whisker surface is in general not smooth, presumably due to the mentioned addition of the individual spherical particles. Beyond the minimum roughness resulting from this source, there is a surface roughness on a larger scale which is determined by the experimental growth conditions⁴. Figures 6 and 7 give examples of two such surface types found in the same batch of whiskers.

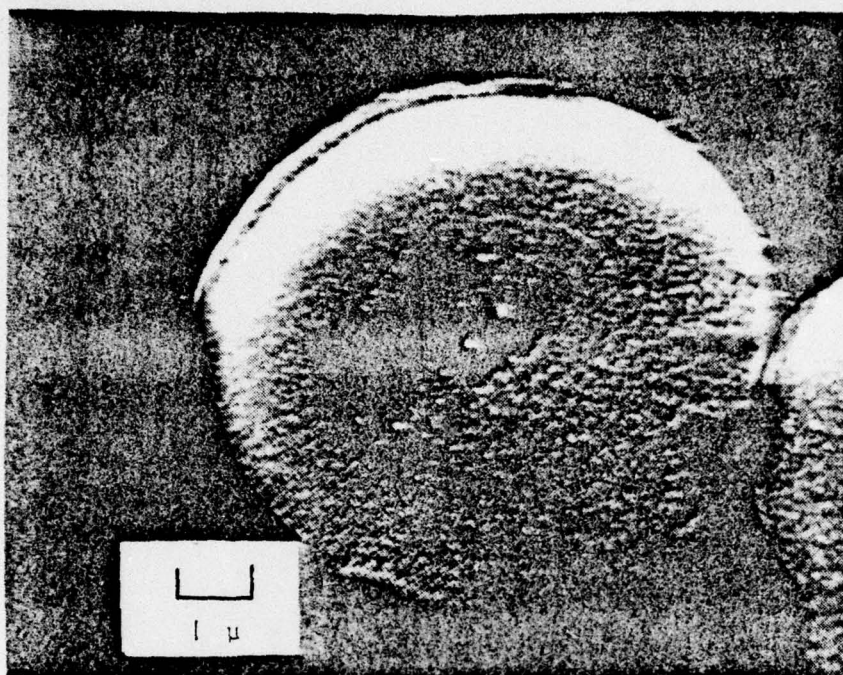


Figure 4 SEM micrograph of concentric ring structure with the rings being made up of individual particles having 1000-3000 Å diameter. The specimen is an iron (steel) whisker polished and then etched with 2% NITOL.

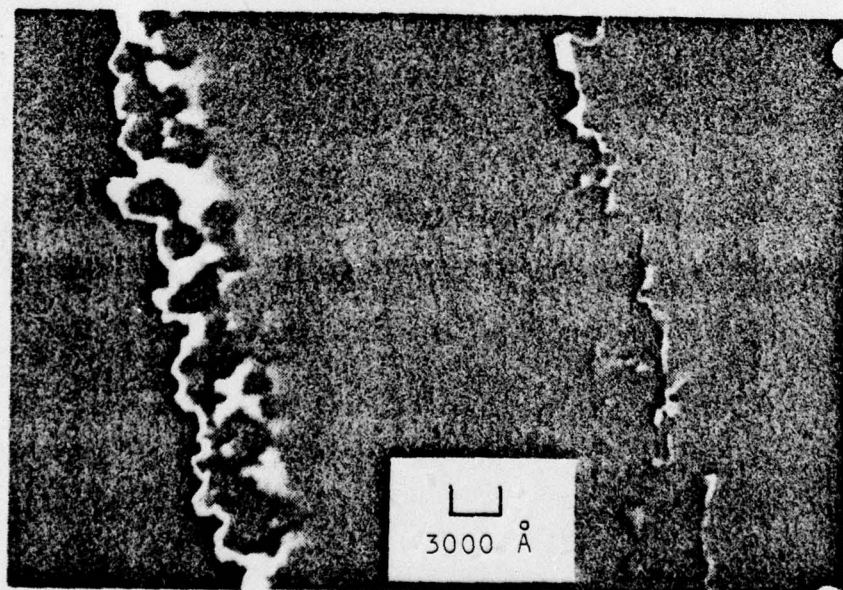


Figure 5 TEM micrograph of an electrochemically thinned iron whisker showing the concentric ring structure made up of ~ 2000 Å particles.

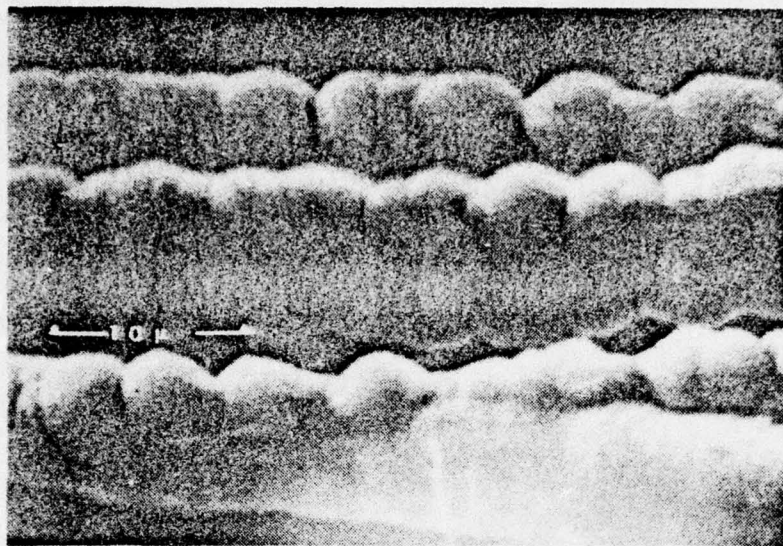


Figure 6 SEM micrograph of the surface of an iron whisker showing a particularly rough surface.

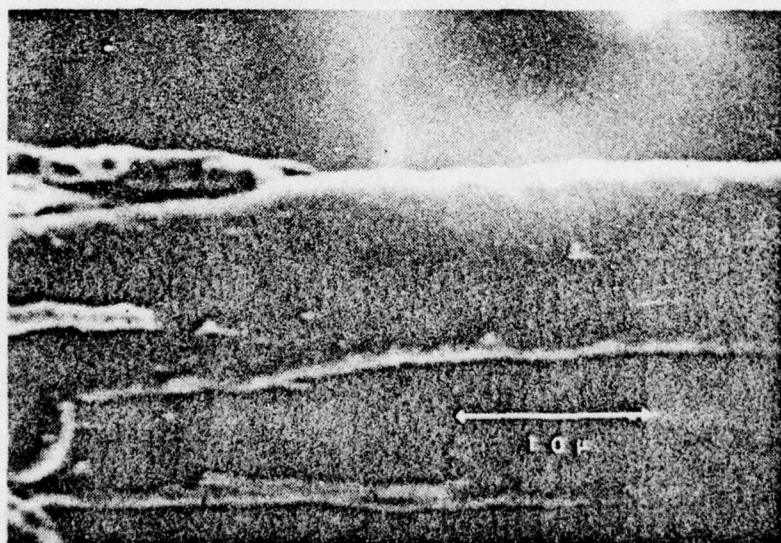


Figure 7 SEM micrograph of the surface of an iron (steel) whisker showing a more or less smooth surface.

IV. RELATION OF STRENGTH TO MICROSTRUCTURE

Characteristic of these whiskers is a very high ultimate tensile strength. The tensile strength of the whisker material has been reported to range from about 5×10^9 Pa to 8×10^9 Pa (500 to 800 Kgf/mm²); this is about $G/12$ where G is the shear modulus. Individual tensile tests of whiskers performed at the University of Virginia have also yielded strengths in this range, using whiskers with diameter between 3 and 20 microns. The ultimate yield strength is found to be independent of diameter for whiskers of diameters of 3 to 20 microns.

The minimum shear stress σ to cause plastic deformation in grains of average grain diameter \bar{d} , present in the whiskers (50 Å to 200 Å) may be roughly estimated from the Hall-Petch equation ^{11,12}

$$\sigma = \sigma_0 + \frac{k}{\bar{d}^{1/2}} \quad (1)$$

where $\sigma_0 \sim 7 \times 10^7$ Pa and $k = 1.7 \times 10^7$ Pa/mm^{1/2} are nominal values for steel ¹³. With grains of 100 Å diameter, Equation (1) gives a value of 5.5×10^9 Pa (560 kgf/mm²) for the yield strength which in this case is also the ultimate tensile stress. This calculation is therefore consistent with the very high observed strength being a result of grain refinement strengthening to the extreme limit.

SUMMARY

Two distinct microstructural regions are noted in the whiskers. These regions are firstly, a polycrystalline core or primary structure, which runs the entire length of the whiskers and secondly, a concentric series of approximately cylindrical shells composed of polycrystalline particles whose diameter is on the order of 0.1μ . The grain size is always found to be in the neighborhood of 50 \AA to 200 \AA . The high strength of these whiskers is basically due to grain refinement strengthening to an extreme limit.

ACKNOWLEDGEMENTS

We would like to express our appreciation to Dr. Kuhlmann-Wilsdorf and Dr. Frank Wawner for their many helpful suggestions, and to Dr. T. Williamson (Nuclear Engineering, University of Virginia) for the neutron activation analysis and Dr. W. T. Drummond (NASA, Langley) for the carbon analysis.

REFERENCES

1. H. J. Schladitz, German Patent No. 1224934 (1964), U. S. Patents No. 3441408 and No. 3570829 (1969/1971).
2. H. J. Schladitz, Z. Metallkunde., 59, 18 (1968).
3. H. J. Schladitz, Fachberichte für Oberflächentechnik, 7, Heft 7/8 (1969).
4. H. Schladitz, Engineers' Digest, 34, June 1973, see also, Ingenieur Digest, 11, Heft 12 (1972).
5. H. J. Schladitz, Öl und Gasfeuerung, 18 164 (1973).
6. W. Dawihl and E. Eicke, Powder Metallurgy International, 3, 75 (1971).
7. W. Dawihl and E. Eicke, Berg- und Hüttenmännische Monatshefte, 116, 473 (1971).
8. H. J. Schladitz, in "Verbundwerkstoffe" (Fachberichte, Tagung Konstanz 1972, Deutsche Gesellschaft für Metallkunde., 1972), p. 153.
9. R. J. Bacigalupi, J. Appl. Phys., 34, 999 (1962).
10. Y. Katsube, personal communication.
11. E. O. Hall, Proc. Roy. Soc. (London) B64, 747 (1951).
12. H. J. Petch, J. Iron Steel Inst., 174, 25 (1953).
13. W. B. Morrison, ASM Trans. Quart. 59, 824 (1966).

DISTRIBUTION LIST

Copy No.

1 - 106	Basic Distribution List and Supplementary Distribution List
107 - 118	H. G. F. Wilsdorf
119	D. H. Lashmore
120	W. A. Jesser
121	D. M. Schladitz
122	H. J. Schladitz
123	I. A. Fischer
124 - 125	E. H. Pancake Science/Technology Information Center Clark Hall
126	K. R. Lawless
127	RLES Files

UNIVERSITY OF VIRGINIA

School of Engineering and Applied Science

The University of Virginia's School of Engineering and Applied Science has an undergraduate enrollment of approximately 1,000 students with a graduate enrollment of 350. There are approximately 120 faculty members, a majority of whom conduct research in addition to teaching.

Research is an integral part of the educational program and interests parallel academic specialties. These range from the classical engineering departments of Chemical, Civil, Electrical, and Mechanical to departments of Biomedical Engineering, Engineering Science and Systems, Materials Science, Nuclear Engineering, and Applied Mathematics and Computer Science. In addition to these departments, there are interdepartmental groups in the areas of Automatic Controls and Applied Mechanics. All departments offer the doctorate; the Biomedical and Materials Science Departments grant only graduate degrees.

The School of Engineering and Applied Science is an integral part of the University (approximately 1,400 full-time faculty with a total enrollment of about 14,000 full-time students), which also has professional schools of Architecture, Law, Medicine, Commerce, and Business Administration. In addition, the College of Arts and Sciences houses departments of Mathematics, Physics, Chemistry and others relevant to the engineering research program. This University community provides opportunities for interdisciplinary work in pursuit of the basic goals of education, research, and public service.