

AD-A034 151

COASTAL ZONE RESOURCES CORP WILMINGTON N C  
STUDY OF LAND USE FOR RECREATION AND FISH AND WILDLIFE ENCHANCE--ETC(U)  
MAY 75

F/6 13/2

DACW73-75-C-0001

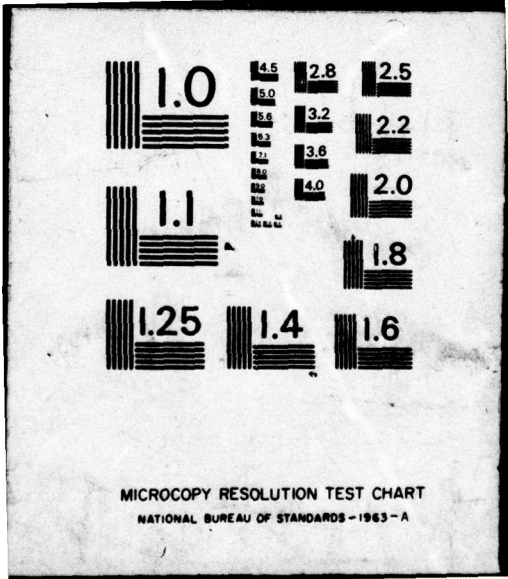
NL

UNCLASSIFIED

| OF |  
AD  
A034151



END  
DATE  
FILMED  
2-77



MICROCOPY RESOLUTION TEST CHART  
NATIONAL BUREAU OF STANDARDS - 1963 - A

FG.

ADA 034151

Appendix E

**STUDY OF LAND USE FOR RECREATION AND FISH AND WILDLIFE ENHANCEMENT**

2

**Consolidated Bibliography**

DDC  
RECEIVED  
DEC 30 1975  
ALBUQUERQUE  
C

**COPY AVAILABLE TO DDC DOES NOT PERMIT FULLY LEGIBLE PRODUCTION**

Submitted to  
**Office, Chief of Engineers  
U.S. Army • Corps of Engineers**

By  
**Coastal Zone Resources Corporation  
Wilmington, North Carolina**

DISTRIBUTION STATEMENT A  
Approved for public release  
Distribution Unlimited

**May 1975**

**REPORT DOCUMENTATION PAGE**

**READ INSTRUCTIONS  
BEFORE COMPLETING FORM**

1. REPORT NUMBER <b>6</b>		2. GOVT ACCESSION NO.	3. RECIPIENT'S CATALOG NUMBER
TITLE (and subtitle) <b>Study of Land Use for Recreation and Fish and Wildlife Enhancement</b> <b>APPENDIX E • CONSOLIDATED BIBLIOGRAPHY</b>		4. TYPE OF REPORT & PERIOD COVERED <b>Final rept.</b>	
7. AUTHOR(s) <b>COASTAL ZONE RESOURCES CORPORATION</b>		8. CONTRACT OR GRANT NUMBER(s) <b>15 DACH 73-75-C-0001</b>	
9. PERFORMING ORGANIZATION NAME AND ADDRESS <b>Coastal Zone Resources Corporation Wilmington, North Carolina</b>		10. PROGRAM ELEMENT, PROJECT, TASK AREA & WORK UNIT NUMBERS <b>Directed by: Public Law 93-251</b>	
11. CONTROLLING OFFICE NAME AND ADDRESS <b>Department of the Army Office of the Chief of Engineers; DAEN-CWO-R Washington, D.C. 20314</b>		12. REPORT DATE <b>11 May 1975</b>	
14. MONITORING AGENCY NAME & ADDRESS (if different from Controlling Office)		13. NUMBER OF PAGES <b>28 112 30 p.</b>	
		15. SECURITY CLASS. (if this report) <b>UNCLASSIFIED</b>	
		15a. DECLASSIFICATION/DOWNGRADING SCHEDULE	
16. DISTRIBUTION STATEMENT (of this Report)  <b>Distribution Statement A</b>			
17. DISTRIBUTION STATEMENT (of the abstract entered in Block 20, if different from Report)			
18. SUPPLEMENTARY NOTES			
19. KEY WORDS (Continue on reverse side if necessary and identify by block number) <b>LAND USE RECREATION FISH AND WILDLIFE</b>			
20. ABSTRACT (Continue on reverse side if necessary and identify by block number) <b>The report describes legislative authorities, policy direction, and land use practices of the U.S. Army Corps of Engineers. It identifies problems and makes recommendations for improved management of project resources.</b>			

*dw*

Appendix E

Consolidated Bibliography

American Fisheries Society, Reservoir Committee of the Southern Division. 1967. Reservoir fishery resources symposium. Washington, D. C.

American Law Institute. 1974. A model land development code: proposed official draft no. 1, tentative draft no. 6, appendix A. Philadelphia, Pennsylvania.

Arizona Game and Fish Commission. ND. Draft letter from Arizona Game and Fish Commission Director to David Reichardt in the Los Angeles Real Estate Division. Phoenix, Arizona.

Arizona Game and Fish Commission. 1968. Fisheries management plan, Alamo Reservoir. Phoenix, Arizona.

Arizona State Parks Board. (1974). Summary of expenditures and budget requests. Phoenix, Arizona.

Arkansas Department of Pollution Control and Ecology. 1973. Regulation number 4; regulation to require disposal permit for real estate subdivisions in proximity to lakes and streams. Little Rock, Arkansas.

Arkansas Game and Fish Commission. 1973. Letter to District Engineer, Vicksburg District. Little Rock, Arkansas.

Arkansas State Department of Health, Bureau of Environmental Engineering. 1972. Septic tank systems. Bulletin No. 9. Little Rock, Arkansas.

Auburn University, Department of Agricultural Economics and Rural Sociology, 1970. Alabama's statewide comprehensive outdoor recreation plan. Vol. 1. Auburn, Alabama.

Auburn University, Department of Agricultural Economics and Rural Sociology. 1973. Alabama's statewide comprehensive outdoor recreation plan: fishing in Alabama, Vol. 19; hunting in Alabama, Vol. 20. Auburn, Alabama.



Barge, Waggoner, Sumner and Cannon, Inc. 1972. Sumner County, comprehensive water and sewer plan. Nashville, Tennessee.

Bemidji State College, Center for Environmental Studies. 1973. Environmental review of the Mississippi Reservoir Projects. Bemidji, Minnesota.

Louis Berger, Inc. 1971. Methodology to evaluate socio-economic benefits of urban water resources: appendices. U. S. Department of the Interior, Office of Water Resources Research, Washington, D. C.

Louis Berger, Inc. 1973. Methodological improvements in measuring economic effects of multipurpose water resource projects. U. S. Department of the Interior, Office of Water Resources Research, Washington, D. C.

Bird, R., and F. Miller. 1962. Contributions of tourist trade to incomes of people in Missouri Ozarks. University of Missouri, Agricultural Experiment Station, Columbia, Missouri.

Bock, P., E. E. Pyatt, and J. A. DeFilippi. 1965. Water resources planning study of the Farmington Valley. The Travelers Research Center, Inc., Hartford, Connecticut.

Booz, Allen and Hamilton, Inc. 1973. The economic impact of Reston on Fairfax County government. Gulf-Reston, Inc., Reston, Virginia.

Borough of Howard. 1973. Management plans for two recreation areas: progress report and schedule 1972-1978 and schedule for 1983-1988. Howard, Pennsylvania.

Boyd, M. B., R. T. Saucier, J. W. Keeley, R. L. Montgomery, R. D. Brown, D. B. Mathis, and C. J. Guice. 1972. Disposal of dredge spoil: problem identification and assessment and research program development. U. S. Army Engineer Waterways Experiment Station, Vicksburg, Mississippi.

Burby, R. J., III. 1969. The role of reservoir owner policies in guiding reservoir land development. Water Resources Research Institute, University of North Carolina, Chapel Hill.

Burby, R. J., III. 1971. Household decision processes in the purchase and use of reservoir recreation land. Center for Urban and Regional Studies, University of North Carolina, Chapel Hill.

Burby, R. J., III, and S. Weiss. 1970. Public policy and shoreline landowner behavior. Center for Urban and Regional Studies, University of North Carolina, Chapel Hill.

Burchell, R. W. 1972. Planned unit development: new communities American style. Center for Urban Policy Research, Rutgers University, New Brunswick, New Jersey.

Burdge, R. J. 1967a. Outdoor recreation: an annotated bibliography. Agricultural Experiment Station, Pennsylvania State University, University Park, Pennsylvania.

Burdge, R. J. 1967b. Outdoor recreation studies: vacations and weekend trips. Agricultural Experiment Station, Pennsylvania State University, University Park, Pennsylvania.

Burkel, D. L. 1973. Vegetation management for Table Rock parks. Missouri Department of Conservation, Jefferson City, Missouri.

Burt, J. P. 1971. Water resources problems and opportunities associated with multiple-purpose impoundments. Pages 75-80 in Water Resources Research Institute publication of proceedings of conference held April 13-14 at Vicksburg. Mississippi State University, State College, Mississippi.

Caldwell, W. W., and G. H. Smith. 1963. Oahe Reservoir: archeology, geology, history. Omaha District, Omaha, Nebraska.

California Public Outdoor Recreation Plan Committee. 1960. California public outdoor recreation plan: part II. Sacramento, California.

Carey, O. L. 1965. The economics of recreation: progress and problems. Western Economics Journal, Spring 1965: 172-181.

Cassel, J. F. 1966. Breeding birds of some shelterbelts in Barnes County, North Dakota. Audubon Field Notes 20:649-655.

Cassel, J. F., A. Buresh, D. J. Fortney, and G. D. Moen. 1967. Breeding birds of some North Dakota shelterbelts. Audubon Field Notes 21:650-656.

Central Alabama Regional Planning and Development Commission. 1971. A plan for use and development of the river resources of the Central Alabama Region. Montgomery, Alabama.

Central Alabama Regional Planning and Development Commission. 1973a. An assessment of economic growth in the Central Alabama Region, 1960-1970. Montgomery, Alabama.

Central Alabama Regional Planning and Development Commission. 1973b. Regional water and sewer study. Montgomery, Alabama.

Central New Hampshire Regional Planning Commission. 1974. Land use. Map prepared for planning purposes (scale 1"=1 mi). Bowe, New Hampshire.

Citizen Review Committee on the Connecticut River Basin. 1971. Comprehensive water and related land resources investigation. New England River Basins Commission, Boston, Massachusetts.

Clark, R. D., Jr., and R. T. Lackey. 1974. Managing trends in angler consumption in freshwater recreational fisheries. Department of Fisheries and Wildlife Sciences, Virginia Polytechnic Institute and State University, Blacksburg, Virginia.

Clawson, M. 1963. Land and water for recreation: opportunities, problems, and policies. Rand McNally and Company, Chicago, Illinois.

Clawson, M. 1967. The federal lands since 1956: recent trends in use and management. Resources for the Future, Washington, D. C.

Coastal Zone Resources Corp. 1973. The private sector and cost-sharing recreation development and maintenance at Corps of Engineers multi-purpose projects: an initial inquiry. Office, Chief of Engineers, Washington, D. C.



Commonwealth of Pennsylvania, Department of Environmental Resources, Bureau of State Parks. 11 January 1974. Letter to Chief, Planning Division, Baltimore District. Harrisburg, Pennsylvania.

Connecticut Department of Environmental Protection. 1974. Water quality standards. Hartford, Connecticut.

Cooperative Regional Research Technical Committee. 1970. An economic study of the demand for outdoor recreation: a collection of papers presented at the annual meeting of the Cooperative Regional Research Technical Committee for Project No. WM-59. Reno, Nevada.

The Council of State Governments. 1974. Data needs and resources for state land use planning. Lexington, Kentucky.

Craddock, G. R., and C. M. Ellerbe. 1965. General soil map of Anderson County, South Carolina. Soil Map Leaflet 4. Clemson University, Clemson, South Carolina.

Craddock, G. R., and C. M. Ellerbe. 1968. General soil map of Pickens County, South Carolina. Soil Map Leaflet 39. Clemson University, Clemson, South Carolina.

Crafts, E. C., contractor. 1970. How to meet public recreation needs at Corps of Engineers reservoirs. Office, Chief of Engineers, Washington, D. C.

Crane, D. M., R. E. Brown, A. M. Kinsky, C. R. DesJardins, R. Hydra, W. J. Hansen, and G. Mueller. 1974. Plan formulation and evaluation studies - recreation. 5 vols. U. S. Army Engineers Institute for Water Resources, Fort Belvoir, Virginia.

Dainter, R. J. 1966. Methods for determination of demand for outdoor recreation. Land Economics Aug. 1966: 327-338.

Darling, A. H. 1973. Measuring benefits generated by urban water parks. Land Economics Feb. 1973: 22-34.

Delaware Division of Fish and Wildlife. ND. C&D Canal Wildlife area: management plan. Dover, Delaware.

Delaware Division of Parks, Recreation, and Forestry.  
ND. Lums Pond State Park (leaflet). Dover, Delaware.

Delaware State Planning Office. 1970. Delaware comprehensive outdoor recreation plan. Dover, Delaware.

Ditmars, E. E. 1973. The Travel Research Association abstract from speeches presented to the newly chartered Canada chapter TTRA November 9, 1973 and the Washington Metropolitan Chapter November 14, 1973. The Travel Research Association, Salt Lake City, Utah.

Emerson, F. B. 1967. Tennessee Valley Wildlife: an outlook for year 2000. Tennessee Valley Authority, Norris, Tennessee.

Fisher, A. C., and J. V. Krutilla. 1972. Determination of optimal capacity of resource-based recreation facilities. Natural Resources Journal July 1972: 417-444.

Fisher, A. C. 1974. Valuing long run ecological consequences and ineversibilaties. Resources for the Future, Inc. (Reprint No. 117), Washington, D. C.

Franklin, H. M. 1973. Controlling urban growth - but for whom?: the social implications of development timing controls. The Potomac Institute, Inc., Washington, D. C.

Frey, R. H., and R. V. Fabian, Jr. 1974. Determining the tolerance of a recreational lake for development and usage. Water Resource Research Center, University of New Hampshire, Durham, New Hampshire.

Gearing, C. E., W. W. Swart, and T. Var. 1974. Establishing a measure of touristic attractiveness. Journal of Travel Research 12(4): 1-8.

Georgia Department of Natural Resources, Environmental Protection Division. 1972. Georgia municipal and industrial wastewater treatment facilities associated with reservoirs. Atlanta, Georgia.

Georgia Department of Natural Resources, Environmental Protection Division. 1973. Water use classifications and water quality criteria for the State of Georgia. Atlanta, Georgia.

Georgia Department of Natural Resources, Game and Fish Division. 23 September 1974. Letter to Coastal Zone Resources Corporation. Atlanta, Georgia.

Georgia Department of Natural Resources, Parks and Historic Sites Division. 1973. Inspection tour of the northeast Georgia State Parks, Parks and Recreation Subcommittee of the House of Representatives Recreation Committee. Atlanta, Georgia.

Georgia Department of Natural Resources, Parks and Historic Sites Division. 1974. Revenue and users report. Atlanta, Georgia.

Gillespie, G. L. 1969. The Clearwater region, an economic base study. University of Idaho, Moscow, Idaho.

Gunn, C. A. 1972. Vacationscape: designing tourist regions. Bureau of Business Research, University of Texas, Austin, Texas.

Hargrove, M. B. 1971. Economic development of areas contiguous to multipurpose reservoirs: the Kentucky - Tennessee experience. Water Resources Institute, University of Kentucky, Lexington, Kentucky.

Hart, W. J. 1966. A systems approach to park planning. International Union for Conservation of Nature and Natural Resources. Morges, Switzerland.

Houston Park, Inc., and N. Larson. 1973. Reston, Virginia; its social impact on Fairfax: a decade of improving the quality of life in urban America. Gulf-Reston, Inc., Reston, Virginia.

Idaho Department of Parks and Recreation. 1973. Idaho: outdoor recreation, 1973. Boise, Idaho.

Idaho Fish and Game Department. 1957. Clearwater game and range study. Boise, Idaho.

Idaho Fish and Game Department. 1965. Preliminary project statement, development and operations, Panhandle Wildlife Areas. Boise, Idaho.

Idaho Fish and Game Department. 1970. Letter to Real Estate Division, Seattle District, Management and Disposal Branch. Boise, Idaho.

Idaho Fish and Game Department. 1973. Annual report of the Fish and Game Department of the State of Idaho. Boise, Idaho.

An Interim Report on Farmington River Basin, Connecticut and Massachusetts. 1960. House Document No. 443, 86th Congress, 2d Session. U. S. Government Printing Office, Washington, D. C.

James, W. S. 1973. Why a state role for land use?. State Government 46(3): 164-166.

Junell, B. 1973. Notes: Southern California Edison's application for relicensing and EIS on the Borel Project. Sacramento District, Sacramento, California.

Kalter, R. J. 1971. The economics of water-based outdoor recreation: a survey and critique of recent developments. National Technical Information Service, Springfield, Virginia.

Kentucky Department of Fish and Wildlife Resources. 1973. Lake Cumberland wildlife management area: annual progress report for 1973. Frankfort, Kentucky.

Kentucky Department of Public Information. 1974a. Kentucky's Lake Cumberland (brochure). Frankfort, Kentucky.

Kentucky Department of Public Information. 1974b. Kentucky's Cumberland Falls (brochure). Frankfort, Kentucky.

Kern County Board of Trade. ND. Information pamphlet. Bakersfield, California.

Kern County Board of Trade. 14 March 1974. News release. Bakersfield, California.

Kern County Planning Commission. 1974. Kern County population by census tracts, U. S. censuses 1960 and 1970 and Kern County Planning Commission projections for 1980, 1990, and 2000. Kern County Planning Commission, Bakersfield, California.

Kimmelman, B., K. Bildstein, P. Bujak, W. Horton, and M. Savina. 1974. Studies in environment: outdoor recreation and the environment. Vol. 5. U. S. Environmental Protection Agency, Office of Research and Development, Washington, D. C.

Knetsch, J. L. 1964. Influence of reservoir projects on land values. Journal of Farm Economics, Vol. XL VI, No. 1 (February).

Knetsch, J. L., and W. J. Hart. 1967. Outdoor recreation policy of U. S. Army Corps of Engineers: initial review and suggestions for improvement. Office, Chief of Engineers, Washington, D. C.

The Lake Eufaula Association. 1973. Lake Eufaula, Oklahoma's gentle giant. Oklahoma City, Oklahoma.

Levenson, A. M. 1971. Evaluation of recreational and cultural benefits of estuarine use in an urban setting. U. S. Department of the Interior, Office of Water Resources Research, Washington, D. C.

Liner, Charles W. 1972. The effects of alternative tax policies on land use. In: Proceedings of the 1972 North Carolina Land Use Congress. Durham, N. C.

Little Rock District. 1971. Report on utilization of civil works lands and facilities, engineering form 3871. Little Rock, Arkansas.

Little Rock District. June 1974. Table Rock Lake, Branson, Missouri. Memorandum from the District Engineer. Little Rock, Arkansas.

Los Angeles District, Real Estate Division. 13 May 1974. Exploration for mineral content, civil case no. 69-101, Phoenix. Drawing No. 50-M-11 (drawing shows project boundary, tracts of land acquired, and dates of acquisition). Los Angeles, California.

Marden, R. H. 1973. The management challenge of land and water resources planning. State Government 46(3): 152-155.

Maryland Department of Game and Inland Fish. 1974. Wildlife management plan for Chesapeake and Delaware Canal lands (draft). Annapolis, Maryland.

Merewitz, L. ND. Estimation of recreational benefits at some selected water development sites in California. Office of Water Resources Research, U. S. Department of the Interior, Washington, D. C.

Miller, Wihry & Brooks, Landscape Architects and Engineers, Inc. ND. Design study Percy Priest State Park. Nashville, Tennessee.

Miller, W. L., and B. A. Scherr. 1974. Cost sharing for recreation: efficiency and equity. Land Economics Feb. 1974: 58-65.

Minnesota Department of Conservation, Division of Game and Fish, Section of Technical Services. 1969. Shoreline modifications by wind and associated water levels and their significance to fish and plant management in Mississippi Headwaters Reservoirs, Leech and Winni-bigoshish Lakes. St. Paul, Minnesota.

Minnesota Department of Natural Resources, Division of Game and Fish, Section of Fisheries. 1972. The Walleye fishery of Leech Lake, Minnesota. Investigational Report No. 317. St. Paul, Minnesota.

Minnesota Department of Natural Resources, Division of Waters, Soils, and Minerals. 1974. Shoreline management -- the concept of cluster development: explanation and guidelines. Supplementary Report No. 4. St. Paul, Minnesota.

Missouri Clean Water Commission. 1973. Water quality: James, Elk, Spring River Basins. Missouri Clean Water Commission, Jefferson City, Missouri.

Missouri Department of Conservation. 11 November 1971. Inhouse memorandum on Corps agricultural outgrants. Wappapello Dam and Reservoir, Wappapello, Missouri.

Missouri Department of Conservation and the Memphis District. 15 January 1971 - 31 October 1972. Series of letters and memoranda. Wappapello Dam and Reservoir, Wappapello, Missouri.

Missouri River Division. 1974. Summary of engineering data - Missouri River main stem reservoirs. Omaha, Nebraska.

Mobile District. 1968. Warrior Lake, Black Warrior and Tombigbee Rivers, Alabama (recreational facilities). Mobile, Alabama.

Mobile District. 1973a. Draft environmental impact statement, Black Warrior and Tombigbee Rivers, Alabama (maintenance). Mobile, Alabama.

Mobile District. 1973b. Project resource management plan, Black Warrior and Tombigbee Lakes, Black Warrior and Tombigbee Rivers, Alabama. Mobile, Alabama.

Mobile District. 1974a. Final environmental statement, Jones Bluff Lock and Dam, Alabama River Basin, Alabama. Mobile, Alabama.

Mobile District. 1974b. John Hollis Bankhead Lock (replacement), Black Warrior-Tombigbee Waterway, Alabama (user pamphlet). Mobile, Alabama.

Mobile District. 1974d. Project data (Warrior Lake). Mobile, Alabama.

Montana State Department of Health and Environmental Sciences. 1973. Water quality standards. MAC 16-2.14 (10)-S 14480. Helena, Montana.

Montgomery Research, Inc. 1972. Summary project report for Ventura County Planning Department and Casitas Municipal Water District on watershed development impact on Lake Casitas. Ventura County Planning Department, Ventura, California.

Moore, A. B., Jr. ND. Future recreation use of Corps projects. Wilmington District, Wilmington, North Carolina.

Morgan, J. M., and P. H. King. 1971. Effects of reservoir operating policy on recreation benefits. Water Resources Bulletin 7(4):765-773.

Musgrave, R. A. 1959. The theory of public finance: a study in public economy. McGraw-Hill Book Company, New York.

Nashville District. 1962. Economic study of Sumner County, Tennessee. Nashville, Tennessee

Nashville District. 1970a. Recreational use survey summary: Lake Cumberland (winter 1969, spring 1970, summer 1970, fall 1970). Nashville, Tennessee.

Nashville District. 1970b. Recreation use survey summary: Old Hickory (fall 1969, winter 1969, spring 1970, summer 1970). Nashville, Tennessee.

Nashville District. 1973. Shoreline management plan, Lake Cumberland. Nashville, Tennessee.

National Association of Counties Research Foundation. ND. Community action program for public officials. Washington, D. C.

National Park and Conservation Association. 1969. Wilderness and the national parks. Washington, D. C.

National Planning Association. 1972. Regional demographic projections: 1960-1985. Washington, D. C.

National Planning Association. 1973. Regional economic projections: 1960-1985. Washington, D. C.

National Youth Advisory Board. ND. Land use and environmental protection. U. S. Environmental Protection Agency, Washington, D. C.

New England Division. 1974. Environmental assessment of the operation and maintenance of Colebrook River Lake. Waltham, Massachusetts.

New England Division, Real Estate Division. 1964. Lease for public park and recreational, fish and wildlife and forest management purposes [including real estate drawings No. 1697, 1698, and 1699 (scale 1"=500 ft)]. Boston, Massachusetts.

New England Division, Real Estate Division. 1974. Map segments 1-4, Colebrook River Lake. Waltham, Massachusetts.

New Hampshire Department of Resources and Economic Development. 1974. 1973 financial report and 1974 annual management programs. Concord, New Hampshire.



New Hampshire Department of Resources and Economic Development, Division of Parks. 1973. Calendar attendance-seven year comparison. Duplicated. Concord, New Hampshire.

New Hampshire Fish and Game Department. 1972. Biennial report 1970-1972. Concord, New Hampshire.

New Hampshire Fish and Game Department. 1973. Wildlife management area guide. Concord, New Hampshire.

New Hampshire Planning and Development Commission. 1955. Social and economic impacts proposed Hopkinton-Everett Reservoir. Concord, New Hampshire.

New Hampshire Planning and Development Commission. 1962. Land use plan Hopkinton-Everett flood control reservoir. Concord, New Hampshire.

New Jersey County & Municipal Government Study Commission. 1974. Housing and suburbs: fiscal and social impact of multifamily development. Trenton, New Jersey.

Nobe, K. C., and D. L. Patton. 1963. Integrating recreation values into comprehensive river basin planning. U. S. Department of the Interior, Bureau of Outdoor Recreation, Washington, D. C.

North Dakota State Game and Fish Department. 1973. 1971 annual program report and 1972 management plan. Bismarck, North Dakota.

North Dakota State Health Department. 1973. Standards of surface water quality for State of North Dakota. Regulation 61-28-05.2, I-VIII. Bismarck, North Dakota.

Office, Chief of Engineers. 1971. Report on the national shoreline study. Washington, D. C.

Office, Chief of Engineers. 1973. Outgrants-CW-active; outgrant listing of active grants (active as of 31 December 1973). Washington, D. C.

Office, Chief of Engineers. 1974. 327.30 Lakeshore management at civil works projects. Washington, D. C.

Office, Chief of Engineers. 1974. Real estate -CW; summary of outgrants - active as of 31 March 1974. Washington, D. C.

Office, Chief of Engineers. 1974. Use fee criteria and schedule of fees: group and family camp areas. Washington, D. C.

Ohio Division of State Parks, Recreation Planning Section. ND. Recommendations for Mosquito Creek State Park (map). Columbus, Ohio.

Ohio Division of Wildlife. 1967. Mosquito lake fishing map. Publication No. 261. Columbus, Ohio.

Oklahoma Department of Tourism and Parks. ND. Oklahoma's Green Country. Oklahoma City, Oklahoma.

Oklahoma Department of Tourism and Parks. ND. Oklahoma's Kiamichi Country. Norman, Oklahoma.

Oklahoma Department of Wildlife Conservation. ND. Draft interdepartmental report concerning grazing leases on state wildlife lands (Table 2). Oklahoma City, Oklahoma.

Oklahoma Department of Wildlife Conservation. ND. Preliminary project plans; development and operations (Robert S. Kerr Game Management Area). Oklahoma City, Oklahoma.

Oklahoma Department of Wildlife Conservation. 1969. Project statement, Texoma Public Hunting Area. Oklahoma City, Oklahoma.

Oklahoma Department of Wildlife Conservation. 1973a. Program narrative development, Hickory Creek Public Hunting Area. Oklahoma City, Oklahoma.

Oklahoma Department of Wildlife Conservation. 1973b. Program narrative development, Texoma Public Hunting Area. Oklahoma City, Oklahoma.

Oklahoma Department of Wildlife Conservation. 1973c. Program narrative development, Tishomingo Wildlife Management Unit. Oklahoma City, Oklahoma.

Oklahoma Department of Wildlife Conservation. 1973d.  
Public hunting lands of Oklahoma. Oklahoma City,  
Oklahoma.

Oklahoma Department of Wildlife Conservation, Fisheries  
Division. 1972. Eufaula Lake study, abstract and  
recommended management plan. Oklahoma City, Oklahoma.

Oklahoma Department of Wildlife Conservation, Game  
Division. ND. Draft interdepartmental report con-  
cerning grazing leases on state wildlife lands (Table  
3). Oklahoma City, Oklahoma.

Oklahoma Department of Wildlife Conservation, Game  
Division. 1973. Program narrative development (Eufaula  
Game Management Area). Oklahoma City, Oklahoma.

Oklahoma Department of Wildlife Conservation, Game  
Division. 1974. Federal aid development and operations  
work plan (Eufaula Public Hunting Area). Oklahoma City,  
Oklahoma.

Oklahoma Industrial Development and Park Department,  
Division of Parks and Recreation. 1972. Oklahoma's  
outdoor recreation. Oklahoma City, Oklahoma.

Oklahoma Office of Community Affairs and Planning. 1973.  
Directory 1973-74, sub-state planning districts in  
Oklahoma. Oklahoma City, Oklahoma.

Oklahoma State University. 1972. Recreation study  
and assessment of pool elevation effects on recreation  
visitation at Lake Texoma. Stillwater, Oklahoma.

Oklahoma Tourism and Recreation Department. ND.  
History of the development of the Division of Lodges.  
Oklahoma City, Oklahoma.

Oklahoma Tourism and Recreation Department. 1973.  
Activity report of the Oklahoma Tourism and Recreation  
Commission and Oklahoma Tourism and Recreation Depart-  
ment from November 1, 1972 to November 1, 1973.  
Oklahoma City, Oklahoma.

Oklahoma Tourism and Recreation Department, Division of  
State Parks. 1971. Annual management plan, Lake  
Texoma State Park. Oklahoma City, Oklahoma.

Oklahoma Tourism and Recreation Department, Division of State Parks. 1972. Annual management plan, Lake Texoma State Park. Oklahoma City, Oklahoma.

Oklahoma Tourism and Recreation Department, Division of State Parks. 1973a. Annual management plan, Lake Texoma State Park. Oklahoma City, Oklahoma.

Oklahoma Tourism and Recreation Department, Division of State Parks. 1973b. 1972 report on Oklahoma's twenty-seven (27) state parks and twenty-four (24) recreation areas. Oklahoma City, Oklahoma.

Oklahoma Tourism and Recreation Department, Division of State Parks. 1974a. Annual management plan, Arrowhead State Park. Oklahoma City, Oklahoma.

Oklahoma Tourism and Recreation Department, Division of State Parks. 1974b. Annual management plan, Fountainhead State Park. Oklahoma City, Oklahoma.

Oklahoma Tourism and Recreation Department, Division of State Parks. 1974c. Five year plan for development. Oklahoma City, Oklahoma.

Oklahoma Water Resources Board. 1971. Appraisal of the water and related land resources of Oklahoma. Oklahoma City, Oklahoma.

Omaha District. 1964. Boating and recreation (map), Lake Oahe: Pierre to Mobridge, South Dakota and Mobridge, South Dakota to Bismarck, North Dakota. Omaha, Nebraska.

Omaha District. ND. Fort Peck Lake (brochure). Fort Peck, Montana.

Operations Research Industries (ORI) Ltd. 1970. Department of land and forests day-use outdoor recreation (day-rec). Ontario Department of Lands and Forests, Toronto, Ontario.

Pankey, V. S., and W. E. Johnston. 1969. Analysis of recreational use of selected reservoirs in California. Office, Chief of Engineers, Washington, D. C.

Patton, D. L. 1964. An evaluation of techniques for estimating short-run demand at proposed outdoor recreation facilities. Presented at Natural Resource Development, Analysis and Policy Course. Publisher unknown.

Pennsylvania State Game Commission. 16 January 1974. Letter to Chief, Planning Division, Baltimore District. Harrisburg, Pennsylvania.

Peterka, J. J. 1970. Productivity of phytoplankton and quantities of zooplankton and bottom fauna in relation to water quality of Lake Ashtabula Reservoir, North Dakota. Research Project Technical Completion Report, North Dakota Water Resources Research Institute, Fargo, North Dakota.

Philadelphia District. 1973. Final environmental impact statement: inland waterway, Delaware River to Chesapeake Bay. Philadelphia, Pennsylvania.

Pittsburgh District. 1974. Listing of boat launching areas at district reservoirs. Pittsburgh, Pennsylvania.

Pittsburgh District, Operations Division. ND. Tabulation of visitation and activity participation for calendar years 1954-1973. Pittsburgh, Pennsylvania.

Pittsburgh District, Real Estate Division. 1971a. Lease to the State of Ohio for park and recreation purposes. Pittsburgh, Pennsylvania.

Pittsburgh District, Real Estate Division. 1971b. License to the State of Ohio for fish and wildlife management purposes. Pittsburgh, Pennsylvania.

Planning Commission, Metropolitan Government of Nashville-Davidson County. 1968. An urban design study of the J. Percy Priest Reservoir area. Nashville, Tennessee.

Planning Commission, Metropolitan Government of Nashville-Davidson County. 1973. Natural environmental analysis. Nashville, Tennessee.

Planning Research Corporation Public Management Services, Inc. 1974. A study of the law enforcement needs and means of providing visitor protection at Corps of Engineers Lakes. Office, Chief of Engineers, Washington, D. C.

Planning Research Corporation Public Management Services, Inc. 1974. A study of the law enforcement needs and means of providing visitor protection at Corps of Engineers lakes: summary and findings. Office, Chief of Engineers, Washington, D. C.

Portland District, Engineering Division, Environmental Quality Branch. 1974. Construction, operation and management, Columbia River, Umatilla to The Dalles, Oregon and Washington. Draft Environmental Impact Statement. Portland, Oregon.

Portland District, Project Operations Division. 1974. Available facilities listing, John Day Lock and Dam Project (Lake Umatilla). Portland, Oregon.

Portland District, Real Estate Division, Management and Disposal Branch. 1974. Outgrant agreements and annual management reports. Portland, Oregon.

Richard L. Ragatz Associates, Inc. 1974. Recreational properties: an analysis of the markets for privately owned recreational lots and leisure homes. U. S. Council on Environmental Quality, Washington, D. C.

Real Estate Research Corporation. 1974a. The costs of sprawl: detailed cost analysis. U. S. Government Printing Office, Washington, D. C.

Real Estate Research Corporation. 1974b. The costs of sprawl: literature review and bibliography. U. S. Government Printing Office, Washington, D. C.

Recreational Facilities Review Commission. 1973. Report to the Legislative Research Commission, Kentucky General Assembly. Frankfort, Kentucky.

Recreation-Resource Management System (RRMS). 1973. 1973 annual reports:

1. Wappapello Lake;
2. Blakely Mt. Dam, Lake Ouachita;
3. Fort Peck Lake;
4. Oahe Dam, Lake Oahe;
5. Colebrook River Lake;
6. Hopkinton-Everett Lakes;
7. Foster Joseph Sayers Dam;
8. IWW Delaware River to Chesapeake Bay C&D Canal;
9. Mississippi River Pool 21;
10. Baldhill Dam, Lake Ashtabula;
11. Leech Lake;
12. Albeni Falls Dam and Lake Pend Orielle;
13. John Day Lock and Dam, Lake Umatilla;
14. Dworshak Dam and Lake;
15. Cordell Hull Dam and Reservoir;
16. Lake Cumberland;
17. Old Hickory Lock and Dam;
18. J. Percy Priest Dam and Reservoir;
19. Mosquito Creek Lake;
20. Black Warrior and Tombigbee Lakes;
21. Jones Bluff Lock and Dam;
22. Clark Hill Lake;
23. Hartwell Lake;
24. Alamo Lake;
25. Isabella Lake;
26. Table Rock Lake;
27. Eufaula Lake;
28. Robert S. Kerr Lake and Dam and Reservoir, Arkansas River Navigation System;
29. Denison Dam, Lake Texoma.

Office, Chief of Engineers, Washington, D. C.

Recreation-Resource Management System (RRMS). 1974.  
CY 1973 annual report: reports A-H. Office, Chief of Engineers, Washington, D. C.

Recreation-Resource Management System (RRMS). 1974.  
CY 1973 annual report: RRMS division-district reports D1-D20. Office, Chief of Engineers, Washington, D. C.

Rockwood, D. M. 1974. Put to the test. Water Spectrum 6(2): 39-45.

Ryck, F. M., Jr. 1974. Missouri stream pollution survey. Missouri Department of Conservation, Jefferson City, Missouri.

Sacramento District. 1969a. Estimating initial reservoir recreation use. Sacramento, California.

Sacramento District. 1969b. Evaluation of recreation use survey procedures. Office, Chief of Engineers, Washington, D. C.

Sacramento District. 1973a. Isabella Reservoir, Kern River Basin, California, water quality data. Sacramento, California.

Sacramento District. 1973b. Preliminary environmental statement, Isabella Lake, Kern County, California. Sacramento, California.

Sacramento District. 1974a. Report of compliance inspection - outgrants. Real Estate Division, Sacramento, California.

Sacramento District. 1974b. Statement of district reviewing appraiser, appraisal report, agricultural outleases, Isabella Lake, Kern County, California. Sacramento, California.

Sagalyn, L. B., and G. Sternlieb. 1972. Zoning and housing costs: the impact of land-use controls on housing price. Center for Urban Policy Research, Rutgers University, New Brunswick, New Jersey.

Savage, P. M. 1973. Designing a state land use program. State Government 46(3): 156-163.

Savannah District. ND. Clark Hill Lake, Georgia and South Carolina (information pamphlet). Savannah, Georgia.

Savannah District. 1952. Definite project report, Hartwell Reservoir, Savannah River, Georgia and South Carolina, Vol. I of III. Savannah, Georgia.

Savannah District. 1972a. Hartwell Lake, Georgia and South Carolina. Information brochure. Savannah, Georgia.

Savannah District. 1972b. Savannah National Recreation Area, feasibility report Volume 2 of 2. Savannah, Georgia.



Savannah District. 1974a. Environmental assessment, Little River development plan. Savannah, Georgia.

Savannah District. 1974b. Information pamphlet, Lake Hartwell. Savannah, Georgia.

Savannah District, Engineering Division, Program Development Branch. 1974. Supplemental information, recreation construction, Hartwell Lake. Savannah, Georgia.

Seattle District. 1974. Draft: inventory of resources management, and development constraints. Seattle, Washington.

Seattle District, Real Estate Division. 1956. License for fish and wildlife purposes, Albeni Falls Reservoir area. Seattle, Washington.

Seattle District, Real Estate Division. 1974a. Memorandum: flowage problems around Lake Pend Orielle, Idaho. Seattle, Washington.

Seattle District, Real Estate Division. 1974b. Memorandum: real estate review, Albeni Falls Dam project. Seattle, Washington.

Shreve, F., and I. L. Wiggins. 1964. Vegetation and flora of the Sonoran Desert. Stanford University Press, Stanford, California.

Sirles, J. E. 1968. Application of marginal economic analysis to reservoir recreation planning. University of Kentucky, Water Resources Institute, Lexington, Kentucky.

Wilbur Smith and Associates. 1972. McCormick County land use survey and analysis. McCormick County, South Carolina.

South Atlantic Division, Engineering Division. 1971. Water resources development in South Carolina. Atlanta, Georgia.

South Carolina Water Resources Commission. 1971. Water use in South Carolina 1970. Columbia, South Carolina.

South Carolina Wildlife and Marine Resources Department. 1971. Job progress report (supplement). Columbia, South Carolina.

South Carolina Wildlife and Marine Resources Department, Division of Game and Freshwater Fisheries. 1 October 1974. Letter to Coastal Zone Resources Corporation. Columbia, South Carolina.

South Central Alabama Development Commission. 1973. Areawide plan -- South Central Alabama Region (population and economy). Montgomery, Alabama.

Southwestern Pennsylvania Regional Planning Commission. 1969. Open space demand model. Pittsburgh, Pennsylvania.

Ralph Stone and Company, Inc. 1971. Socio-economic study of multiple-use water supply reservoirs: final report. Office of Water Resources Research, U. S. Department of the Interior, Washington, D. C.

Street, D. R. 1965. Evaluation of recreation benefits on small watersheds. U. S. Department of Agriculture, Washington, D. C.

Table Rock Project Office. ND. Summary of dock zoning questionnaire. Branson, Missouri.

Tennessee State Planning Commission. 1972. Economy and population, Hendersonville and Sumner County, Tennessee. Nashville, Tennessee.

Tennessee Valley Authority. ND. Tennessee Valley outdoor recreation plan: methodology. Vol. 1. Division of Reservoir Properties, Recreation Resources Branch, Knoxville, Tennessee.

Texas Parks and Wildlife Department. ND. Parks information. Austin, Texas.

Texas Parks and Wildlife Department. 1970. Annual report. Austin, Texas.

Texas Parks and Wildlife Department. 1973. Annual report. Austin, Texas.

Tulsa District. ND. Historical assessment for the Denison Dam (Lake Texoma) restudy. Tulsa, Oklahoma.

Tulsa District. ND. Instructions for the management of land leased for agricultural and grazing purposes. Tulsa, Oklahoma.

Tulsa District. 1970. Contract No. DACW56-1-70-302 for grazing purposes. Tulsa, Oklahoma.

Tulsa District. 1971. Lake Texoma project brochure. Tulsa, Oklahoma.

Tulsa District. 1972. Eufaula Lake, Oklahoma. Tulsa, Oklahoma.

Tulsa District. 1973a. Contract No. DACW56-1-73-006 for agricultural and grazing purposes. Tulsa, Oklahoma.

Tulsa District. 1973b. Report on utilization of civil works, lands, and facilities (Robert S. Kerr Lock and Dam, Sallisaw, Oklahoma). Tulsa, Oklahoma.

Tulsa District. 1973c. Survey report on Denison Dam (Lake Texoma) restudy. Vol. 4, Appendix IV. Tulsa, Oklahoma.

Tulsa District. 1974a. Civil Works Recreation-Resource Management System transcript (part VII), narrative report, Eufaula Lake. Tulsa, Oklahoma.

Tulsa District. 1974b. Civil Works Recreation-Resource Management System transcript (part VII), narrative report, Robert S. Kerr Lock and Dam and Reservoir. Tulsa, Oklahoma.

Tulsa District, Real Estate Division. 1946. Final ownership maps, [Denison Dam (Lake Texoma)] Tulsa, Oklahoma.

Tulsa District, Real Estate Division. 1958. Final ownership map, Elm Ridge Homesites. Tulsa, Oklahoma.

Tulsa District, Real Estate Division. 1965. Report of compliance inspection, Hagerman National Wildlife Refuge. Tulsa, Oklahoma.

- Tulsa District, Real Estate Division. 1971a. Final ownership maps, Caney Creek Homesites. Tulsa, Oklahoma.
- Tulsa District, Real Estate Division. 1971b. Final ownership maps, Sand Point Homesites. Tulsa, Oklahoma.
- Tulsa District, Real Estate Division. 1972. Final ownership maps, Mill Creek Homesites. Tulsa, Oklahoma.
- Tulsa District, Real Estate Division. 1974a. Appraisal of cottage sites, Tulsa, Oklahoma.
- U. S. Army Corps of Engineers, Institute for Water Resources, Center for Economic Studies. 1972. Proceedings of Corps of Engineers Economists Conference in Galveston, Texas. Alexandria, Virginia.
- U. S. Bureau of the Census, 1971. U. S. Census of population: 1970; number of inhabitants. Washington, D. C.
- U. S. Bureau of the Census. 1974a. 1972 Census of governments: vol. 6, topical studies; number 3, state payments to local governments. Washington, D. C.
- U. S. Bureau of the Census. 1974b. 1972 census of governments: vol. 6, topical studies; no. 4, historical statistics on governmental finances and employment. Washington, D. C.
- U. S. Comptroller General. 1974. Improved federal efforts needed to equally consider wildlife conservation with other features of water resource developments. U. S. General Accounting Office, Washington, D. C.
- U. S. Department of Agriculture, Economic Research Service. 1964. Rural recreation enterprises in New England: investments, returns, problems. Washington, D. C.
- U. S. Department of Agriculture, Forest Service. 1973. Recreational facilities on the Sequoia National Forest. Porterville, California.
- U. S. Department of Agriculture, Forest Service, Chippewa National Forest. ND. The Inguadoana canoe tour. Cass Lake, Minnesota.

U. S. Department of the Interior, Bureau of Land Management. 1967. B.M recreational guide: Montana. Washington, D. C.

U. S. Department of the Interior, Bureau of Land Management. 1972. 6721 - reservoirs (manual transmittal sheet). Washington, D. C.

U. S. Department of the Interior, Bureau of Outdoor Recreation. 1963. Tourist and recreation potential St. Clair County, Alabama. Washington, D. C.

U. S. Department of the Interior, Bureau of Outdoor Recreation. 1970. Survey of hunting and fishing. Washington, D. C.

U. S. Department of the Interior, Bureau of Outdoor Recreation. 1974. The 1970 survey of outdoor recreation activities. Washington, D. C.

U. S. Department of the Interior, Bureau of Outdoor Recreation and Smithsonian Institution Science Information Exchange. 1971. Outdoor recreation research a reference catalog: 1970. Washington, D. C.

U. S. Department of the Interior, Bureau of Outdoor Recreation. 1973. Outdoor recreation: a legacy for America (including Appendix "A"). Washington, D. C.

U. S. Department of the Interior, Bureau of Outdoor Recreation. 1966. Water-oriented outdoor recreation: Lake Erie Basin. Ann Arbor, Michigan.

U. S. Department of the Interior, Fish and Wildlife Service. 1953. An interim report on the fish and wildlife resources affected by the Albeni Falls project, Pend Orielle River, Idaho. Washington, D. C.

U. S. Department of the Interior, Fish and Wildlife Service. 1959. A report on the fish and wildlife resources in relation to the water development plan for the Hopkinton-Everett Dam and Reservoir. Boston, Massachusetts.

U. S. Department of the Interior, Fish and Wildlife Service, Bureau of Sport Fisheries and Wildlife. 1969. Tishomingo National Wildlife Refuge brochure. Washington, D. C.

U. S. Department of the Interior, Fish and Wildlife Service, Bureau of Sport Fisheries and Wildlife. 1970. Work plan, Tishomingo National Wildlife Refuge. Tishomingo, Oklahoma.

U. S. Department of the Interior, Fish and Wildlife Service, Bureau of Sport Fisheries and Wildlife. 1972. Birds of the Charles M. Russell National Wildlife Range, Montana. Fort Peck, Montana.

U. S. Department of the Interior, Fish and Wildlife Service, Bureau of Sport Fisheries and Wildlife. 1973. Hagerman National Wildlife Refuge brochure. Washington, D. C.

U. S. Department of the Interior, Fish and Wildlife Service, Bureau of Sport Fisheries and Wildlife. 1974. Bibliography of research publications of the U. S. Bureau of Sport Fisheries and Wildlife, 1928-72. Resource Publication 120. Washington, D. C.

U. S. Department of the Interior, Fish and Wildlife Service, Bureau of Sport Fisheries and Wildlife. 1974. Charles M. Russell National Wildlife Range descriptive literature and maps. Fort Peck, Montana.

U. S. Department of the Interior, Fish and Wildlife Service, Office of the Commissioner. 1961a. A detailed report on fish and wildlife resources affected by John Day Lock and Dam Project, Columbia River, Washington and Oregon. Portland, Oregon.

U. S. Department of the Interior, Fish and Wildlife Service, Office of the Commissioner. 1961b. Justification for acquisition of lands proposed John Day waterfowl management area, John Day Lock and Dam Project, Columbia River, Oregon and Washington. Portland, Oregon.

U. S. Environmental Protection Agency, Office of Air Quality and Standards. 1973a. Guide for compiling a comprehensive emission inventory (revised). Research Triangle Park, North Carolina.

U. S. Environmental Protection Agency, Office of Air Quality and Standards. 1973b. National Emissions Data System (NEDS) source classification codes. Research Triangle Park, North Carolina.

U. S. Federal Power Commission. 1970a. Recreation facility costs and design use. Washington, D. C.

U. S. Federal Power Commission. 1970b. Recreation opportunities at hydroelectric projects licensed by the Federal Power Commission. Washington, D. C.

U. S. Forest Service. 1971. Daniel Boone National Forest (brochure). Somerset, Kentucky.

U. S. Senate, Committee on Interior and Insular Affairs. 1974. State land use program. U. S. Government Printing Office, Washington, D. C.

University of Oklahoma, Bureau for Business and Economic Research. 1972. The impact of Denison Reservoir on surrounding counties. Norman, Oklahoma.

University of Tulsa. 1971. Biological inventory and environmental studies relating to Lake Texoma. Tulsa, Oklahoma.

Upper Savannah Regional Planning and Development Council. 1973. Land ownership patterns, McCormick County, South Carolina (map). Greenwood, South Carolina.

Vicksburg District. 1973. Lake Ouachita (brochure). Vicksburg, Mississippi.

Vicksburg District, Engineering Division. 1974. Compilation of project data, and personal communication, September-November, 1974. Vicksburg District, Engineering Division, Vicksburg, Mississippi.

Vicksburg District and U. S. Forest Service, Ouachita National Forest. 1973. Lake Ouachita jurisdictional study. Vicksburg, Mississippi.

Walla Walla District. 1970. Public use plan for development and management of Dworshak Reservoir. Walla Walla, Washington.

Walla Walla District. 1972. Lease agreement with the Nez Perce Tribe for recreational purposes. Walla Walla, Washington.

Walla Walla District. 1973. Dworshak Dam and Reservoir brochure. Walla Walla, Washington.

Walla Walla District. 1974a. Assessment of environmental impacts of granting section 10 permits and/or related easements for irrigation pumping plants on federal shorelands. Walla Walla, Washington.

Warner, L., D. D. Badger, and G. M. Lage. 1973. Impact study of the construction and operation of the Tenkiller Ferry Lake, Oklahoma. Research Foundation, Oklahoma State University, Stillwater, Oklahoma.

West Alabama Planning and Development Council. 1971. Land use survey and analysis. Tuscaloosa, Alabama.

West Alabama Planning and Development Council. 1973. Community facilities inventory. Tuscaloosa, Alabama.

Wisconsin Conservation Department. 1960. A comprehensive plan for Wisconsin outdoor recreation. Madison, Wisconsin.

Wisconsin Department of Resource Development. 1962. Recreation in Wisconsin. Madison, Wisconsin.

Yesk, A. J. 1973. How changing social values may affect travel. The Travel Research Association, Salt Lake City, Utah.