

UNITED STATES AIR FORCE  
AIR FORCE SYSTEMS COMMAND  
ARMAMENT DEVELOPMENT AND TEST CENTER  
EGLIN AIR FORCE BASE, FLORIDA

①  
B.S.

# OPERATION NEW ARRIVALS

## PHASE II - THE PIPELINE

24 MAY 1975 - 28 JUNE 1975

PART TWO IN ONE VOLUME

ADA 017704



Phase I - 18017703

EGLIN REFUGEE PROCESSING CENTER  
EGLIN AIR FORCE AUXILIARY FIELD #2  
EGLIN AIR FORCE BASE, FLORIDA

APPROVED FOR PUBLIC RELEASE  
No limitation on distribution

AUGUST 1975

A  
B  
C  
D  
E  
F  
G  
H

RECEIVED BY: [Signature]

DATE: [Date]

BY: [Signature]

DESCRIPTION: [Text]

**A**

OPERATION NEW ARRIVALS,

PHASE II - THE PIPELINE PHASE,

24 May - 28 June 1975.

PART II, IN ONE VOLUME

Office of History  
3201st Air Base Group  
Headquarters  
Armament Development and Test Center  
Eglin Air Force Base, Florida

24  
4/24/75

TABLE OF CONTENTS

	<u>Page</u>
INTRODUCTION. . . . .	ii
PART I	
CHRONOLOGY . . . . .	1
PART II	
FORWARD . . . . .	20
RECOMMENDATIONS FOR THE FUTURE. . . . .	21
Civil Engineers. . . . .	21
Logistics. . . . .	22
Security Police . . . . .	23
LIST OF ABBREVIATIONS . . . . .	25
TABS	<u>Tab</u> s
Refugee Arrival Statistics . . . . .	A
Messages . . . . .	B
Organizational Charts. . . . .	C/1-C/4
Communications Report. . . . .	D
Logistics Report . . . . .	E
Personnel Status Chart . . . . .	F
Manning Documents. . . . .	G/1-G/2
Cost Document. . . . .	H
PHOTOGRAPHS, DIAGRAMS	
Aerial View and Diagram. . . . .	Following Introduction

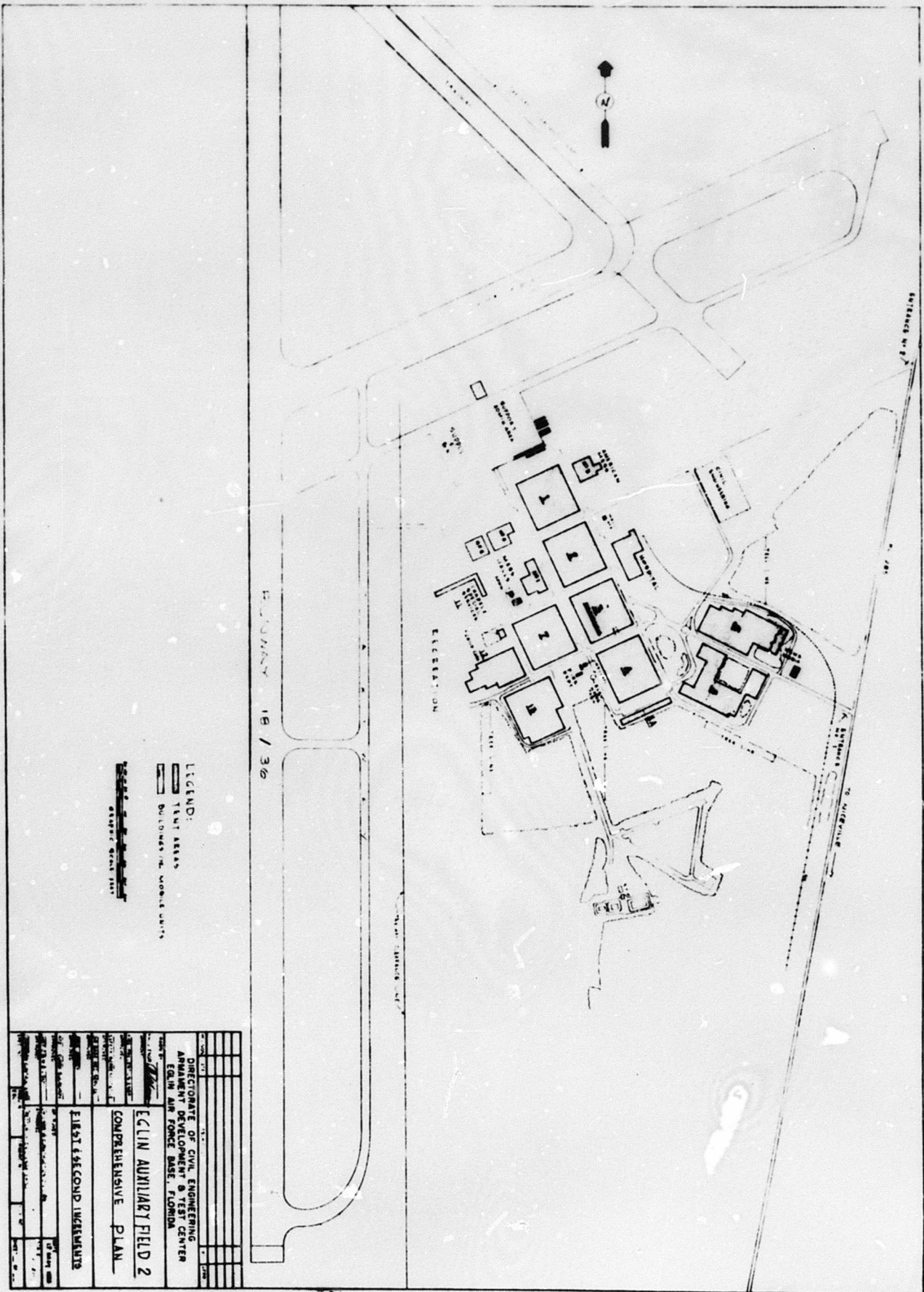
## INTRODUCTION

The Eglin Refugee Processing Center at Auxiliary Field 2, Eglin AFB, Florida, entered its operational period - The Pipeline Phase - on 24 May 1975. In the ensuing month, until 28 June 1975, the New Arrivals Task Force operated to maintain and insure the health and welfare of the Vietnamese refugees who were being processed and awaiting sponsorship.

The routine activities of the Pipeline Phase were in sharp contrast with the rapidly occurring events of the Buildup Phase from 27 April - 23 May. The Buildup Phase was the subject of Part I of this report and the Pipeline Phase is herein described.

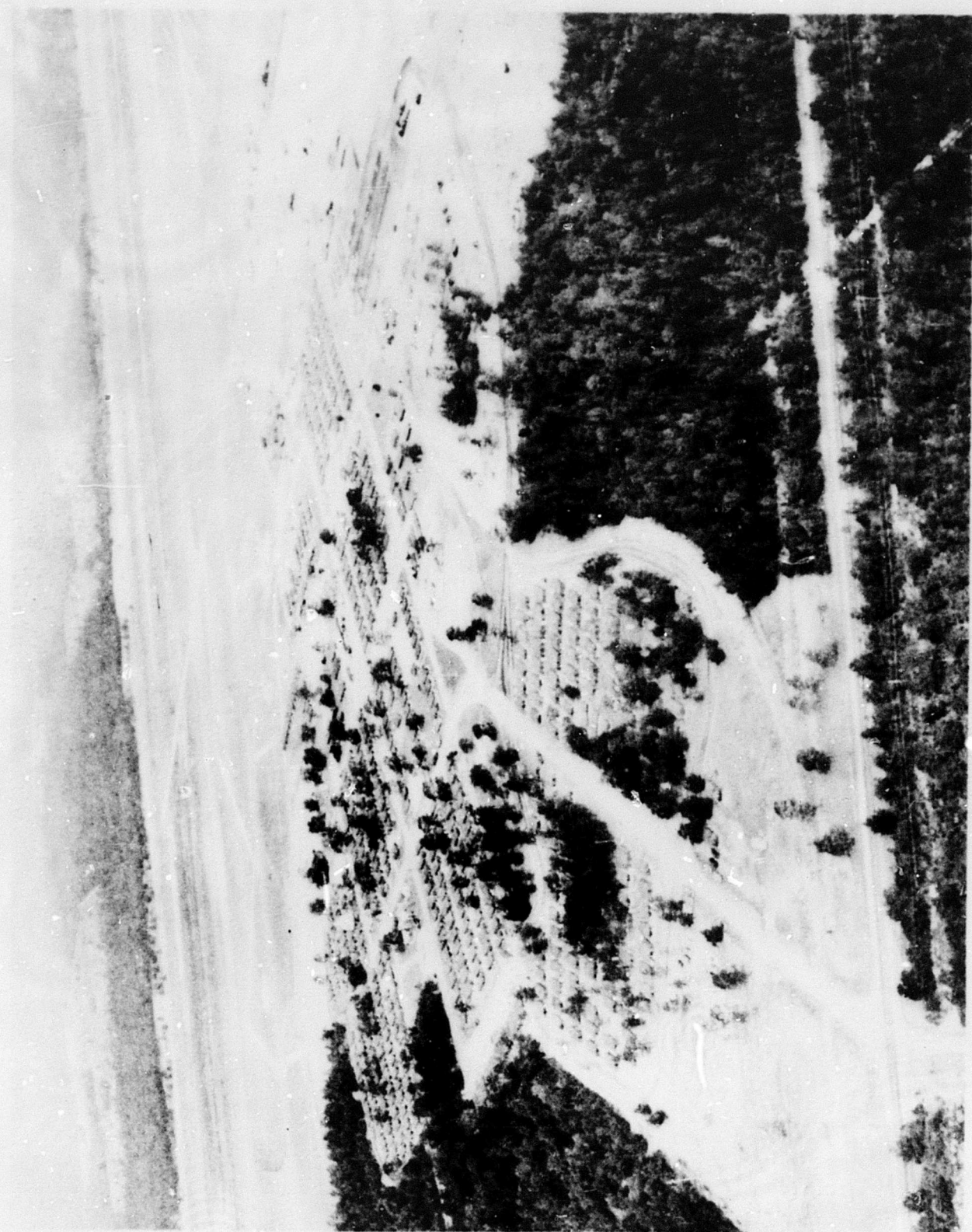
For the interested reader documents pertinent to Operation New Arrivals have been made an integral part of the archives of the ADTC Office of History.

15 August 1975  
ADTC Office of History  
Eglin Air Force Base,  
Florida



DIRECTORATE OF CIVIL ENGINEERING AVIATION DEVELOPMENT & TEST CENTER EGLIN AIR FORCE BASE, FLORIDA	
<b>EGLIN AUXILIARY FIELD 2</b>	
<b>COMPREHENSIVE PLAN</b>	
<b>ELECT &amp; SECOND WIREMENTS</b>	
DATE: 18 / 36	DRAWN BY:
CHECKED BY:	SCALE:
PROJECT NO.:	SHEET NO.:
TOTAL SHEETS:	DATE:

EGLIN AUXILIARY FIELD 2, 23 May 1975



PART I

C H R O N O L O G Y

OPERATION NEW ARRIVALS

EGLIN REFUGEE PROCESSING CENTER

PHASE I: 27 Apr - 23 May

- 27 Apr Armament Development and Test Center (ADTC) alerted of impending task; staff assembled; and site selection begun.
- 28 Apr Eglin AFB selected as a refugee center and may receive up to 20,000 refugees. Task Force appointed.
- 29 Apr Oplan for Reception of Indochina Refugees formulated; ADTC designated as the point of contact for procurement of all supplies and equipment.
- 30 Apr Construction of refugee center begun; first group of logistics aircraft arrived.
- 1 May Construction intensified. More support personnel arrived. Field 2 site completely cleared for construction. Personnel involved in buildup: 1,234.
- 2 May Mr. James B. Chandler, Interagency Task Force Coordinator (Department of State) for Eglin AFB arrived. Press Center operational. Center construction on schedule. Over \$1 million spent to establish the Center.
- 3 May Operations became centralized at Field 2. Tent construction continued. Kitchens became operational.



- 4 May First refugees arrived; camp areas defined. Tent erection continued.
- 5 May Local purchases total \$545,000; Departure Control Center commenced. Tent construction continued and bed occupancy augmented.
- 6 May Vietnamese Councils formed. Field 2 facilities could absorb 2,500 refugees. Tent construction continued and bed occupancy further augmented.
- 7 May Second planeload of refugees arrived. Manning document published for the Processing Center.
- 8 May Base Exchange trailer provided. Relocation process of refugees continued. Bed capacity at the Processing Center increased.
- 9 May Contingency plan formulated for 5,000 refugee capacity. Random search of vehicles initiated. Refugee sponsorship increased.
- 10 May More refugees arrived at Field 2. Total 2,777.
- 11 May Security improved. Volunteer agencies became more active.
- 12 May Field 2 capacity to increase to 5,000. Vietnamese to help maintain the Processing Center.
- 13 May Second manning document published. DOD Officials visited Field 2.
- 14 May Field hospital enlarged. Refugee sponsorship continued.
- 15 May First refugee newspaper published. More refugees arrive for a total of 3,020 at Field 2.

16 May TIDY augmentees arrived. Total refugees sponsored number 299.

17 May Staff personnel cut proposed. Total refugees sponsored number 349.

18 May First Vietnamese born to refugee parents. Theft reported. Refugees sponsored reach 346.

19 May Possibility that the Processing Center would close in the summer of 1975. Environmental impact survey started. Refugees sponsored reach 410.

20 May First fire at the Center. Manpower status revised. Refugees sponsored reach 424.

21 May Environmental report dispatched. Meeting for future construction. Refugees sponsored reach 427.

22 May Refugees deposited their money in local bank. Refugees sponsored reach 465.

23 May At the end of Phase I, 5,258 Vietnamese had arrived at the Processing Center on 25 flights. Cost for Operation New Arrivals was over \$2.2 million for Phase I.

PHASE II: 24 May - 28 Jun

24 May Refugee status was as follows (See Tab A for tabular data concerning refugee statistics):

Arrivals: 46  
Departures: 46  
On Hand: 4734  
Total Relocated: 570  
Total Inspected and Cleared: 944

Total Processed, but not cleared: 4040

- (1) 411 required sponsorship
- (2) 794 required security clearances
- (3) 2835 required both

Status of Processing:

- (1) 411 had security clearances
- (2) 794 had sponsors
- (3) 271 had both clearances and sponsorship

USAF/USA/Civilian/Support Personnel totalled 1405.

The total daily count per meal was over 4,000 and the authorized daily monetary allowance for feeding the refugees at the Center was \$12,214.75. During the period 24 May - 20 June, the average daily usage of utensils was as follows (Tab - F):

Paper plates	-----	25,000
Forks	-----	13,000
Spoons	-----	13,000
Knives	-----	12,000
Paper cups	-----	56,000

25 May

Refugee status was as follows:

Arrivals: 160

Departures: 90

On Hand: 4804

Total Relocated: 660

Total Inspected and Cleared: 1041

Total Processed, but not cleared: 4076

- (1) 421 required sponsorship
- (2) 927 required security clearances
- (3) 2728 required both

Status of Processing:

- (1) 660 had security clearances
- (2) 1166 had sponsors
- (3) 239 had both clearances and sponsorship

USAF/USA/Civilian/Support Personnel totalled 1425.

The latrines were completed in Section 4 in the week beginning 25 May; work was begun on French drains connecting showers and laundries to sanitary sewage system. One sewer tie-in was completed each day.

26 May

Refugee status was as follows:

Arrivals: 0  
Departures: 24  
On Hand: 4780  
Total Relocated: 684  
Total Inspected and Cleared: 1242  
Total Processed, but not cleared: 3877  
    (1) 426 required sponsorship  
    (2) 733 required security clearances  
    (3) 2718 required both  
Status of Processing:  
    (1) 729 had security clearances  
    (2) 1036 had sponsors  
    (3) 305 had both clearances and sponsorship

USAF/USA/Civilian/Support Personnel totalled 1420.

The Air Force-wide TDY resources were in place, thus relieving the initial cadre of USAFTAWC personnel.

27 May

Refugee status was as follows:

Arrivals: 165  
Departures: 123  
On Hand: 4822  
Total Relocated: 807  
Total Inspected and Cleared: 1529  
Total Processed, but not cleared: 3704  
    (1) 397 required sponsorship  
    (2) 565 required security clearances  
    (3) 2742 required both  
Status of Processing:  
    (1) 690 had security clearances  
    (2) 858 had sponsors  
    (3) 295 had both clearances and sponsorship

USAF/USA/Civilian/Support Personnel totalled 1130.

28 May

Refugee status was as follows:

Arrivals: 0  
Departures: 154  
On Hand: 4668  
Total Relocated: 961  
Total Inspected and Cleared: 1809  
Total Processed, but not cleared: 3439  
    (1) 388 required sponsorship  
    (2) 338 required security clearances  
    (3) 2713 required both  
Status of Processing:  
    (1) 726 had security clearances  
    (2) 676 had sponsors  
    (3) 338 had both clearances and sponsorship

USAF/USA/Civilian/Support Personnel totalled 1102.

29 May

Refugee status was as follows:

Arrivals: 0  
Departures: 113  
On Hand: 4555  
Total Relocated: 1074  
Total Inspected and Cleared: 2148  
Total Processed, but not cleared: 3265  
    (1) 474 required sponsorship  
    (2) 232 required security clearances  
    (3) 2559 required both  
Status of Processing:  
    (1) 674 had security clearances  
    (2) 432 had sponsors  
    (3) 200 had both clearances and sponsorship

USAF/USA/Civilian/Support Personnel totalled 1161.

30 May

Refugee status was as follows:

Arrivals: 32  
Departures: 90

On Hand: 4497  
Total Relocated: 1164  
Total Inspected and Cleared: 2354  
Total Processed, but not cleared: 3150  
    (1) 641 required sponsorship  
    (2) 176 required security clearances  
    (3) 2333 required both  
Status of Processing:  
    (1) 755 had security clearances  
    (2) 290 had sponsors  
    (3) 114 had both clearances and sponsorship

USAF/USA/Civilian/Support Personnel totalled 1175.

Revised manning document issued (Tab C).

31 May

Refugee status was as follows:

Arrivals: 2  
Departures: 91  
On Hand: 4408  
Total Relocated: 1255  
Total Inspected and Cleared: 2526  
Total Processed, but not cleared: 3040  
    (1) 766 required sponsorship  
    (2) 309 required security clearances  
    (3) 1965 required both  
Status of Processing:  
    (1) 836 had security clearances  
    (2) 379 had sponsors  
    (3) 70 had both clearances and sponsorship

USAF/USA/Civilian/Support Personnel totalled 1158.

1 Jun

Refugee status was as follows:

Arrivals: 165  
Departures: 144  
On Hand: 4429  
Total Relocated: 1399  
Total Inspected and Cleared: 2586

Total Processed, but not cleared: 2964

- (1) 853 required sponsorship
- (2) 262 required security clearances
- (3) 1849 required both

Status of Processing:

- (1) 952 had security clearances
- (2) 361 had sponsors
- (3) 99 had both clearances and sponsorship

USAF/USA/Civilian/Support Personnel totalled 1158.

During the week beginning 1 June, the latrines in Section 2 were completed and the portalets were removed from Section 4. The portion of the sewage plant contracted out was completed. The sewage plant was placed in operation with the tie-in of an 8-inch sewer main to existing lines.

The 823rd Civil Engineering Squadron, Heavy Repair (TAC) "Redhorse" altered the clothing issue tents and constructed two additional tents for the Departure Control Center.

2 Jun

Refugee status was as follows:

Arrivals: 0

Departures: 63

On Hand: 4366

Total Relocated: 1462

Total Inspected and Cleared: 2708

Total Processed, but not cleared: 2812

- (1) 897 required sponsorship
- (2) 194 required security clearances
- (3) 1721 required both

Status of Processing:

- (1) 1023 had security clearances
- (2) 320 had sponsors
- (3) 126 had both clearances and sponsorship

USAF/USA/Civilian/Support Personnel totalled 1165.

3 Jun

Refugee status was as follows:

Arrivals: 25  
Departures: 123  
On Hand: 4268  
Total Relocated: 1585  
Total Inspected and Cleared: 2909  
Total Processed, but not cleared: 2644  
    (1) 900 required sponsorship  
    (2) 145 required security clearances  
    (3) 1599 required both  
Status of Processing:  
    (1) 1015 had security clearances  
    (2) 260 had sponsors  
    (3) 115 had both clearances and sponsorship

USAF/USA/Civilian/Support Personnel totalled 1157.

4 Jun

Refugee status was as follows:

Arrivals: 0  
Departures: 125  
On Hand: 4143  
Total Relocated: 1649  
Total refugees with security clearance, but not departed: 920  
Total refugees with sponsor verification and authenticated to INS, but not departed: 118  
Total both cleared and sponsored: 162

USAF/USA/Civilian/Support Personnel totalled 1138.

5 Jun

Refugee status was as follows:

Arrivals: 165  
Departures: 82  
On Hand: 4226  
Total Relocated: 1729  
Total refugees with security clearance, but not departed: 3244  
Total refugees with sponsor verification and authenticated to INS, but not departed: 1467  
Total both cleared and sponsored: 1412



USAF/USA/Civilian/Support Personnel totalled 1184.

6 Jun

Refugee status was as follows:

Arrivals: 0  
Departures: 91  
On Hand: 4135  
Total Relocated: 1820  
Total refugees with security clearance, but  
not departed: 3390  
Total refugees with sponsor verification and  
authenticated to INS, but not departed: 1654  
Total both cleared and sponsored: 1636

USAF/USA/Civilian/Support Personnel totalled 1158.

The AN/TSW-7 Air Traffic Control Central (mobile control tower) was released for return to the 3rd Mobile Communications Group, Tinker AFB, Oklahoma (Tab C).

7 Jun

Refugee status was as follows:

Arrivals: 251  
Departures: 113  
On Hand: 4273  
Total Relocated: 1933  
Total refugees with security clearance, but  
not departed: 3500  
Total refugees with sponsor verification and  
authenticated to INS, but not departed: 1687  
Total both cleared and sponsored: 1674

USAF/USA/Civilian/Support Personnel totalled 1133.

The Command Post personnel were reduced from four shift teams to three shift teams.

8 Jun

Refugee status was as follows:

Arrivals: 1  
Departures: 101

On Hand: 4173  
Total Relocated: 2034  
Total refugees with security clearance, but  
not departed: 3432  
Total refugees with sponsor verification and  
authenticated to INS, but not departed: 1636  
Total both cleared and sponsored: 1619

USAF/USA/Civilian/Support Personnel totalled 1130.

During the week beginning 8 June, the latrines in  
Section 1 were completed; portalets in Section 2  
were removed.

The "Redhorse" engineers constructed one tent dur-  
ing the week.

9 Jun

Refugee status was as follows:

Arrivals: 330  
Departures: 186  
On Hand: 4317  
Total Relocated: 2192  
Total refugees with security clearance, but  
not departed: 3279  
Total refugees with sponsor verification and  
authenticated to INS, but not departed: 1498  
Total both cleared and sponsored: 1491

USAF/USA/Civilian/Support Personnel totalled 1103.

10 Jun

Refugee status was as follows:

Arrivals: 180  
Departures: 135  
On Hand: 4418  
Total Relocated: 2327  
Total refugees with security clearance, but  
not departed: 3613  
Total refugees with sponsor verification and  
authenticated to INS, but not departed: 1469  
Total both cleared and sponsored: 1458

USAF/USA/Civilian/Support Personnel totalled 1067.

11 Jun

Refugee status was as follows:

Arrivals: 162  
Departures: 148  
On Hand: 4432  
Total Relocated: 2475  
Total refugees with security clearance, but  
not departed: 3625  
Total refugees with sponsor verification and  
authenticated to INS, but not departed: 1431  
Total both cleared and sponsored: 1422

USAF/USA/Civilian/Support Personnel totalled 1073.

12 Jun

Refugee status was as follows:

Arrivals: 0  
Departures: 156  
On hand: 4276  
Total Relocated: 2618  
Total refugees with security clearance, but  
not departed: 3581  
Total refugees with sponsor verification and  
authenticated to INS, but not departed: 1352  
Total both cleared and sponsored: 1347

USAF/USA/Civilian/Support Personnel totalled 1051.

13 Jun

Refugee status was as follows:

Arrivals: 0  
Departures: 73  
On Hand: 4205  
Total Relocated: 2694  
Total refugees with security clearance, but  
not departed: 3659  
Total refugees with sponsor verification and  
authenticated to INS, but not departed: 1371  
Total both cleared and sponsored: 1361

USAF/USA/Civilian/Support Personnel totalled 1062.

14 Jun

Refugee status was as follows:

Arrivals: 180  
Departures: 132  
On Hand: 4251  
Total Relocated: 2823  
Total refugees with security clearance, but not departed: 3589  
Total refugees with sponsor verification and authenticated to INS, but not departed: 1326  
Total both cleared and sponsored: 1314

USAF/USA/Civilian/Support Personnel totalled 1049.

15 Jun

Refugee status was as follows:

Arrivals: 165  
Departures: 126  
On Hand: 4290  
Total Relocated: 2949  
Total refugees with security clearance, but not departed: 3584  
Total refugees with sponsor verification and authenticated to INS, but not departed: 1229  
Total both cleared and sponsored: 1213

USAF/USA/Civilian/Support Personnel totalled 1037.

During the week of 15 June, the "Redhorse" engineers constructed four tents for State Department and VOLAG activities.

16 Jun

Refugee status was as follows:

Arrivals: 29  
Departures: 52  
On Hand: 4267  
Total Relocated: 3102  
Total refugees with security clearance, but not departed: 3696  
Total refugees with sponsor verification and authenticated to INS, but not departed: 1220  
Total both cleared and sponsored: 1206

USAF/USA/Civilian/Support Personnel totalled 1024.

17 Jun

Refugee status was as follows:

Arrivals: 164  
Departures: 64  
On Hand: 4367  
Total Relocated: 3161  
Total refugees with security clearance, but  
not departed: 3738  
Total refugees with sponsor verification and  
authenticated to INS, but not departed: 1199  
Total both cleared and sponsored: 1191

USAF/USA/Civilian/Support Personnel totalled 1026.

18 Jun

Refugee status was as follows:

Arrivals: 180  
Departures: 115  
On Hand: 4432  
Total Relocated: 3276  
Total refugees with security clearance, but  
not departed: 3746  
Total refugees with sponsor verification and  
authenticated to INS, but not departed: 1122  
Total both cleared and sponsored: 1114

USAF/USA/Civilian/Support Personnel totalled 1017.

JCS Msg 182131Z June 75 directed that the Center  
prepare for a surge to 6,000 refugees during the  
period 20-25 June 75. (Tab B)

19 Jun

Refugee status was as follows:

Arrivals: 188  
Departures: 102  
On Hand: 4518  
Total Relocated: 5378  
Total refugees with security clearance, but  
not departed: 4153

Total refugees with sponsor verification and  
authenticated to INS, but not departed: 1175  
Total both cleared and sponsored: 1166

USAF/USA/Civilian/Support Personnel totalled 1017.

20 Jun

Refugee status was as follows:

Arrivals: 0  
Departures: 62  
On Hand: 4456  
Total Relocated: 3440  
Total refugees with security clearance, but  
not departed: 4173  
Total refugees with sponsor verification and  
authenticated to INS, but not departed: 1212  
Total both cleared and sponsored: 1207

USAF/USA/Civilian/Support Personnel totalled 990.

To meet the increase to 6,000 refugees by 25 June,  
the decision was made to convert the 11 education  
tents to sleeping tents and to add two or three  
beds to each existing sleeping tent.

21 Jun

Refugee status was as follows:

Arrivals: 122  
Departures: 57  
On Hand: 4521  
Total Relocated: 3495  
Total refugees with security clearance, but  
not departed: 4248  
Total refugees with sponsor verification and  
authenticated to INS, but not departed: 1285

USAF/USA/Civilian/Support Personnel totalled 1283.

22 Jun

Refugee status was as follows:

Arrivals: 256  
Departures: 24

On Hand: 4753  
Total Relocated: 3519  
Total refugees with security clearance, but  
not departed: 4282  
Total refugees with sponsor verification and  
authenticated to INS, but not departed: 1288  
Total both cleared and sponsored: 1285

USAF/USA/Civilian/Support Personnel totalled 973.

During the week of 22 June, ten sleeping tents  
and eleven classroom tents were constructed. Two  
tents were added to the Volag tents.

Latrines in Section 7 were completed. The sewage  
plant was operational, but marginally so, because  
the final percolation pond was unable to dispose  
of effluent, Work was begun on an irrigation  
system to handle the effluent. The project to tie  
the showers to the sewer line was completed.

23 Jun

Refugee status was as follows:

Arrivals: 384  
Departures: 105  
On Hand: 5032  
Total Relocated: 3624  
Total refugees with security clearance, but  
not departed: 4494  
Total refugees with sponsor verification and  
authenticated to INS, but not departed: 1221  
Total both cleared and sponsored: 1215

USAF/USA/Civilian/Support Personnel totalled 976.

24 Jun

Refugee status was as follows:

Arrivals: 565  
Departures: 163  
Death: 1  
On Hand: 5434  
Total Relocated: 3738

Total refugees with security clearance, but not departed: 4587  
Total refugees with sponsor verification and authenticated to INS, but not departed: 1166  
Total both cleared and sponsored: 1160

USAF/USA/Civilian/Support Personnel totalled 964.

Center capacity reached 6,000.

25 Jun

Refugee status was as follows:

Arrivals: 658  
Departures: 75  
On Hand: 5997  
Total Relocated: 3811  
Total refugees with security clearance, but not departed: 4912  
Total refugees with sponsor verification and authenticated to INS, but not departed: 1147  
Total both cleared and sponsored: 1143

USAF/USA/Civilian/Support Personnel totalled 965.

26 Jun

Refugee status was as follows:

Arrivals: 128  
Departures: 134  
On Hand: 5991  
Total Relocated: 3945  
Total refugees with security clearance, but not departed: 5100  
Total refugees with sponsor verification and authenticated to INS, but not departed: 1069  
Total both cleared and sponsored: 1065

USAF/USA/Civilian/Support Personnel totalled 1013.

27 Jun

Refugee status was as follows:

Arrivals: 12 (New babies)  
Departures: 66



On hand: 5937  
Total Relocated: 4011  
Total refugees with security clearance, but  
not departed: 5353  
Total refugees with sponsor verification and  
authenticated to INS, but not departed: 1066  
Total both cleared and sponsored: 1062

USAF/USA/Civilian/Support Personnel totalled 998.

The first baby was delivered at the Field 2 hospital.

During the month of June, the hospital statistics  
were as follows:

Outpatient visits	----	4,084
Laboratory procedures	----	1,597
X-ray films exposed	----	402
Prescriptions filled	----	2,544
Hospital admissions	----	39
Average number of days in hospital	----	4.7
Inpatient days	----	185

28 Jun

Refugee status was as follows:

Arrivals: 0  
Departures: 69  
On Hand: 5808  
Total Relocated: 4080  
Total refugees with security clearance, but  
not departed: 5551  
Total refugees with sponsor verification and  
authenticated to INS, but not departed: 1063  
Total both cleared and sponsored: 1028

USAF/USA/Civilian/Support Personnel totalled 990.

During the period 24 May - 28 June, administrative  
statistics consisted of the following:

- (1) Incoming messages processed: 492
- (2) Outgoing messages processed: 353
- (3) Total electro-static copies produced: 35,067
- (4) Approximate number of forms issued: 2,025
- (5) Approximate volume of incoming personal mail: 8,665
- (6) Approximate number of incoming official mail: 1,643

## PART II

### F O R E W O R D

The Eglin Refugee Processing Center continued to operate on a routine basis. The rapid pace of the Buildup Phase was followed by the steady flow of day-to-day activities in the Pipeline Phase. The health and well-being of the Vietnamese refugees were maintained at a high level. The Center continued to function with the goal and primary concern of maintaining the refugees under the best possible conditions while undergoing processing and awaiting sponsorship.

Several needs persisted from the initial period. For example, there was a continuing demand for competent interpreters, especially as concerned the care of sick refugees. The instability of personnel in a fluid TDY manning situation persisted throughout the Pipeline Phase. Several recommendations resulted from different aspects of Center activities during the second phase. There generally were refinements of procedures and day-to-day experiences as the Eglin Refugee Center became more stabilized.

## PART II

### RECOMMENDATIONS FOR THE FUTURE

#### Civil Engineers

The initial authorization from the JCS to AFSC for PRIME BEEF assistance lacked the necessary specifics or detailed instructions as to the resources required for project New Arrivals. As a consequence, the unit-deployment concept was not adhered to implicitly. Rather the assistance requested from various CONUS sites was on a "man-specialty" basis.

For example, two fire fighters were requested from Base X, three from Base Y, and one from Base Z. Other "trades" or specialists were requisitioned in a similar fashion. The PRIME BEEF concept of a unified team as an organized unit was not followed. Moreover, the individuals dispatched were instructed not to take their tool kits with them. In certain highly specialized areas, e.g., refrigeration specialists, were unable to find, requisition, or assemble their tools necessary for their work.

PRIME BEEFERS detailed from the CONUS sites had different periods of TDY authorized which weakened continuity and impaired mission objectives. For example, in the use of fire

fighters, each had a different TDY terminal date. As a consequence, personnel actions had to be accomplished at the very time the personnel picture was being strained.

Recommendation: PRIME BEEF Team dispatched should be intact for any future operation of this kind, which would improve logistics and personnel problems. A PRIME BEEF unit from a single home base, having trained and performed together, would possess sufficient esprit de corps for superior performance. However, in those contingencies where tool kits could not be transported, local supply facilities should have procedures whereby kits could be requisitioned and assembled with expediency.

### Logistics

To meet the particular demands for supplies the logistics function was unusually challenging. The varied nature of needs that had to be met for the refugees led to difficulties in maintaining a proper inventory and subsequent inventory control. For example, when the supply of paper cups at the Refugee Processing Center became depleted, stock was replenished by local purchase until CONUS supply depots could provide additional cups.

Another example of supply vagaries was the use of shampoo to supplement the shortage of soap bars. Again, sanitary napkins were "quilted" together to make pallets. Also, the hoarding of baby food might have been a manifestation of food insecurity or a dietary supplement. At any rate, control of these items was difficult to maintain. Apart from this bizarre experience, other items in demand were equally challenging. For example, high on the priority list were needles and thread, potty chairs, and flags for Buddhist rites. It proved difficult to find Federal Stock Numbers for some of these items, especially chamber pots. On top of all of this, lack of adequate security in the Personal and Baby Store compounded the problem of maintaining proper inventory and accountability of items stocked. It was a moot point as to whether or not such chamber pots were expendable items!

A detailed account of logistics activities, statistics, and recommendation for coping with the various problems are contained in the Logistics Report at Tab E.

#### Security Police

The Pipeline Phase was characterized by routine but necessary maintenance of law and order, protection of refugees

and property of both refugees and the U.S. Government. A lesson learned was that constant visibility of the Security Police in walking patrols and to some extent by vehicular patrols and key supervisory checks was instrumental in maintaining a very low level of reported incidents.

List of Abbreviations

ADTC	Armament Development and Test Center
AFB	Air Force Base
AFSC	Air Force Systems Command
CONUS	Continental United States
DOD	Department of Defense
INS	Immigration and Naturalization Service
JCS	Joint Chiefs of Staff
MET	Management Engineering Team
Msg	Message
NATF	New Arrivals Task Force
PRIME BEEF	Prime <u>B</u> ase <u>E</u> mergency <u>E</u> ngineer <u>F</u> orce
TAC	Tactical Air Command
TDY	Temporary Duty
USA	United States Army
USAF	United States Air Force
USAFTAWC	United States Air Force Tactical Air Warfare Center
VOLAG	Volunteer Agency





TAB A

Refugee Arrival Statistics

Statistical Data - 26 May - 28 June 1975

a. Arrivals (Atch #2).

(1) Commercial Flights	3,001	-	Average 68.2 per day
(2) MAC C-141s	1,538	-	Average 219.7 per day (7 day period)
(3) MEDEVACs			71 Patients and 74 PAX
(4) <u>TOTAL</u>	4,684		

b. Departure Control (Atch #3).

3,475

Average 102.2

c. Military Personnel Supporting New Arrivals:

26 May: USAF - 1,245, USA - 21, Dept of AF Civilians - 119

28 Jun: USAF - 653, USA - 22, Dept of AF Civilians - 125

ATCH #2

STATISTICAL DATA ARRIVALS - 26 MAY - 28 JUNE 1975

<u>ZULU DATES</u>	<u>COMMERCIAL</u>	<u>MILITARY</u>	<u>MEDEVAC</u>
26 MAY	-	-	-
27	165	-	-
28	-	-	-
29	-	-	-
30	-	-	16 PAT & 16 PAX
31	2	-	-
1 JUNE	165	-	-
2	-	-	-
3	165	-	-
4	-	-	-
5	165	-	-
6	-	-	-
7	251	-	-
7	1	-	-
8	-	-	-
9	165	-	-
	165	-	-
10	180	-	-
11	162	-	7 PAT & 49 PAX
12	-	-	-
13	-	-	-
14	180	-	-
15	165	-	-
16	-	-	20 PAT & 9 PAX
17	164	-	-
18	180	-	-

ATCH # 2 (CONT'D)

<u>ZULU DATES</u>	<u>COMMERCIAL</u>	<u>MILITARY</u>	<u>MEDEVACS</u>
19 JUNE	180	-	-
19	-	-	2 PAT & 6 PAX
20	-	-	-
21	-	122	-
		128	-
22	-	128	-
23	-	128	-
	-	128	-
	-	128	-
24	-	125	-
	-	128	-
	173	-	-
	-	11	-
	-	128	-
	-	-	5 PAT & 4 PAX
25	-	128	-
	-	128	-
	373	-	-
26	-	128	-
27	-	-	-
28	-	-	2 PAT & 9 PAX
<b>TOTALS</b>	<b>3,001</b>	<b>1,538</b>	<b>52 PAT &amp; 93 PAX</b>
<b>AVERAGE/DAY =</b>	<b>88.2</b>	<b>AVERAGE/DAY = 219.7</b>	

ANALYSIS:

DEPARTURES

DAY/NUMBER

MAY 26 - 24  
27 - 123  
28 - 154  
29 - 113  
30 - 90  
31 - 91  
JUNE 1 - 144  
2 - 63  
3 - 123  
4 - 125  
5 - 82  
6 - 91  
7 - 113  
8 - 101  
9 - 186  
10 - 135  
11 - 148  
12 - 156  
13 - 73  
14 - 132  
15 - 126  
16 - 52  
17 - 59  
18 - 115  
19 - 102

DAY/NUMBER

20 - 62 (JUNE)  
21 - 57  
22 - 24  
23 - 104  
24 - 163  
25 - 75  
26 - 134  
27 - 66  
28 - 69

---

TOTAL - 3,475

OUTPROCESSED FROM 26 MAY to 28 JUNE

- HIGH DAY - 186 (MONDAY)

9 JUNE 1975

- LOW DAY - 24 (SUNDAY)

22 JUNE 1975

DAILY AVERAGE - 102.2

WEEKLY AVERAGE - 695

(1 DAY SHORT OF 5 WEEKS)

Atch # 3

TAB B

JCS Message

182131Z Jun 75

COPY AVAILABLE TO DBC DOES NOT PERMIT FULLY LEGIBLE PRODUCTION

*File*  
*05-1-1*  
*LOUISIANA*

NNNNCA:UZYUW RUKKJCS 4865 UNCLAS 1802133Z JUNE 75 RUCLMMA.

ZNR UUUUU

0 182131Z JUN 75

FM JCS WASH DC  
TO RUHAFCA/CINCPAC HONOLULU HI  
INFO RUEADWD/CSA WASH DC  
RUEFHGA/CSAF WASH DC  
RUEOFIA/CMC WASH DC  
RUHVAAA/CINCPACAF HICKAM AFB HI  
RUCIMAA/MAC SCOTT AFB IL  
ZEN/SECDEF WASH DC  
RUEHC/SECSTATE WASH DC  
RUHJQFA/3AD ANDERSEN AFB GUAM  
RUHNSAA/CINCPACREP GUAM ITP1  
RHMGGQA/CINCPACREP PHILIPPINES  
RUWLEKA/CINCSAO OFFUTT AFB MO  
KUNMEFA/22AF TRAVIS AFB CA  
RUCLHEA/CDR FORSCOM FORT MCPHERSON CA  
RUWLDFO/COMCIB CAMP PENDLETON CA  
RUWJGFA/CG MCAS EL TORO CA  
RUMTROY/CDR FORT CHAFFEE AR  
RUCLMMA/ADTC EGLIN AFB FL

*A*  
*FID#2*  
*OSX*

*440*  
*23*

*Distribution*

<i>Action</i>	<i>Info</i>
<i>DOOC</i>	<i>CC</i>
	<i>DS</i>
	<i>R4D</i>
	<i>LL</i>
	<i>DA-FILE</i>

*MISSIONS*  
*Forecast*

PAGE 2 RUKKJCS 4865 UNCLAS  
RUKLAAA/TAC LANGLEY AFB VA  
RUCJAAA/USCINCPAC MACDILL AFB FL  
RUEQAWA/AFSC ANDREWS AFB MD  
RUHHWAA/STATE REP WAKE IS  
RUEBROA/CDR FORT INDIANTOWN GAP MIL RES PA  
RHMFMIA/COMUSMACTHAI BANGKOK THAILAND  
RHMIAAAA/13AF CLARK AB PHILIPPINES  
RHMIAAAA/30SG CLARK AB PHILIPPINES  
RUMOSHA/330USC UTAPOD AFLD THAILAND  
BT

UNCLAS 9738

JA SENDS

SECSTATE FOR MS TAFI

SECDEF FOR ASD:ISA

SUBJ: OPERATION NEW LIFE TO CONUS AIRLIFT NO. 37

REF: JCS 589/180252Z JUN 75.

THIS MESSAGE IN TWO PARTS. PART ONE FOR ALL.

1. THIS MESSAGE REFLECTS CONTINUED ACCELERATED DRAWDOWN OF REFUGEES FROM GUAM. THE GOAL IS TO REACH A LEVEL OF NOT MORE THAN 10,500 AT GUAM NLT 250000Z JUNE 75. ACCORDINGLY, ALL CONUS INSTALLATIONS

*INFO*

**COPY AVAILABLE TO DDC DOES NOT PERMIT FULLY LEGIBLE PRODUCTION**

*Summary*  
*To W/AF*  
*WR HAVE*  
*W/AF*

PAGE 3 RUEKJCS 4865 UNCLAS

SHOULD BE PREPARED FOR A SURGE IN ARRIVALS DURING THE PERIOD 20-25 JUNE 75. WITH HEAVY AIRLIFT REQUIREMENTS DURING THIS PERIOD, IT WILL BE IMPOSSIBLE TO SCHEDULE ALL ARRIVALS DURING HOURS OF DAYLIGHT AS PREVIOUSLY REQUESTED BY THE SERVICES. ADDITIONALLY, A SHORTAGE OF AIRLIFT DURING CERTAIN PERIODS MAY REQUIRE SOME SHIFTING IN ARRIVAL TIMES WITHIN THE PERIOD 20-25 JUNE 75.

2. THE SCHEDULED REFUGEE ARRIVALS ARE BASED UPON MAINTAINING EACH CAMP POPULATION AT NEAR CAPACITY. DAILY RELEASE RATES WILL BE CAREFULLY MONITORED AND WHEN REQUIRED, AIRLIFT REQUIREMENTS WILL BE MODIFIED IN AN EFFORT NOT TO EXCEED THE EXISTING CAMP CAPACITIES.

3. THE FOLLOWING PLANNING GUIDANCE TO AMEND REF IS PROVIDED. SCHEDULE REFLECTS ARRIVALS AT EACH CONUS RECEPTION CENTER BETWEEN 18 JUNE 75 AND 20 JUNE 75. SUFFIX OF EACH NUMBER DENOTES OVERSEAS CAMP OF ORIGIN: G-GUAM, T-THAILAND, W-WAKE, C-CONUS.

CENTER/DATE (JUN)	18	19	20	21	22
PENDLETON	219G	347G	628G	340G	1051
CHAFFEE	128W/304G	128W	658G	778G	898G
EGLIN	0	0	332G	103G	330G
INDIANTOWN	0	0	559G	405G	778G
TOTAL	711	475	2172	1658	2172

PAGE 4 RUEKJCS 4865 UNCLAS

CENTER/DATE (JUN)	23	24	25	26	27	28
PENDLETON	678G	348G/240G	340	340	34	34
CHAFFEE	898G	348G	898	219	219	219
EGLIN	340	653G	340	0	10	0
INDIANTOWN	559G	215G	0	0	0	0
TOTAL	2442	790/1048	790/1453	790	724	555

4. INCLUDED IN REF WAS A REQUIREMENT TO TRANSFER 286 PERSONNEL DESIRING REPATRIATION TO PENDLETON ON 23 JUNE 1975. WITH THE SURGE IN OVERSEA ARRIVALS AT PENDLETON DURING THE SAME PERIOD, THIS INTRA-CONUS TRANSFER HAS BEEN CHANGED TO 24 JUNE 75. ALL INFO REGARDING ORIGIN, DESTINATION, AND PAY REMAINS THE SAME AS DESCRIBED IN REF WITH IN TORHILION L 18 AT IN CAMP W/ PART TWO FOR CSAF

5. PLEASE TAKE ABOVE FOR ACTION. REQUEST HAS COORDINATE INTRA-CONUS MOVEMENT OF PERSONNEL FROM CHAFFEE, EGLIN, AND INDIAN CAMP TO PENDLETON AND INFORM ALCOF OF FLIGHT ORIGIN AND ARRIVAL TIMES. THIS INTRA-CONUS MOVEMENT HAS BEEN COORDINATED WITH INTERAGENCY TASK FORCE.

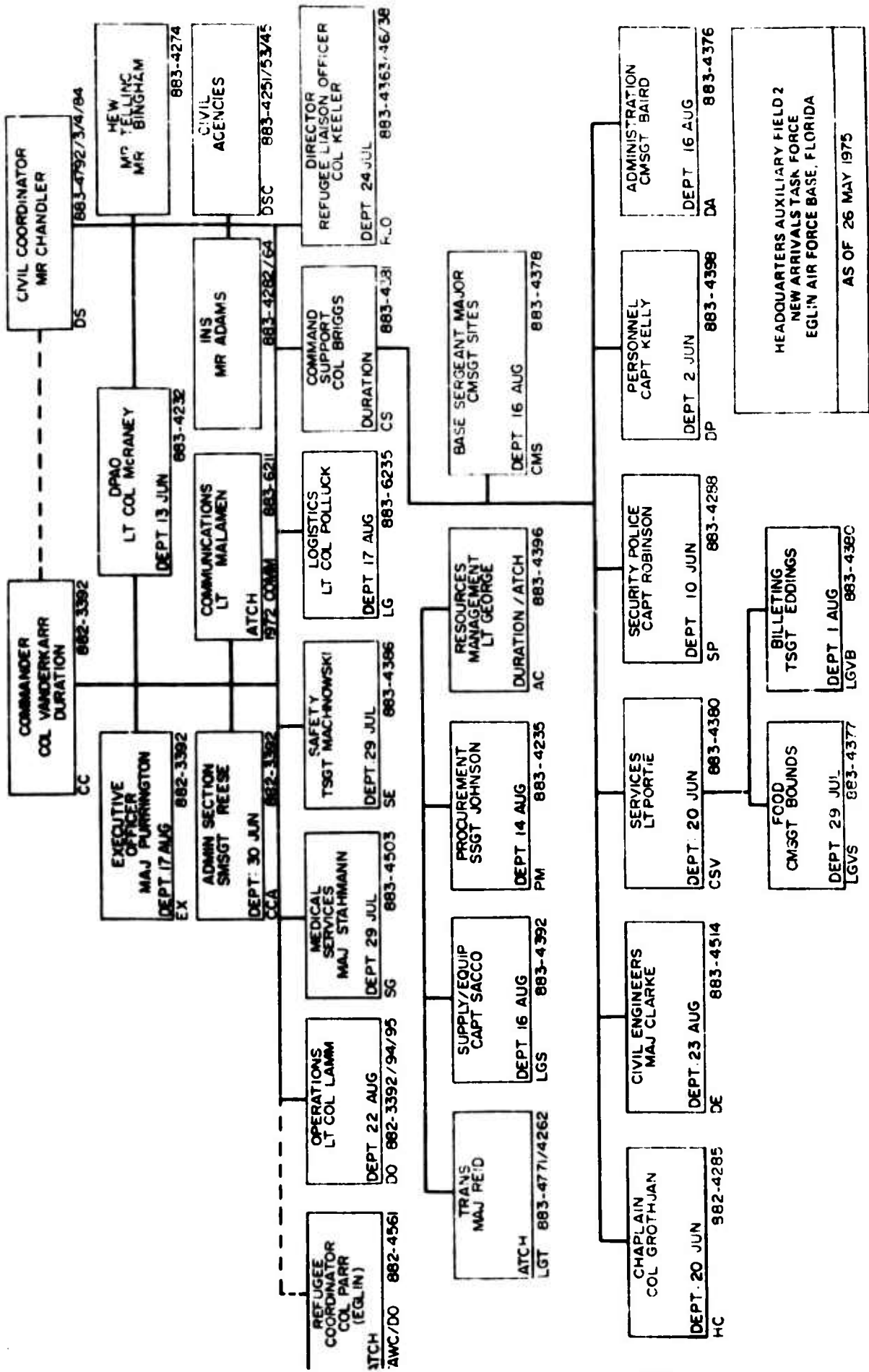
BT  
 (44865)

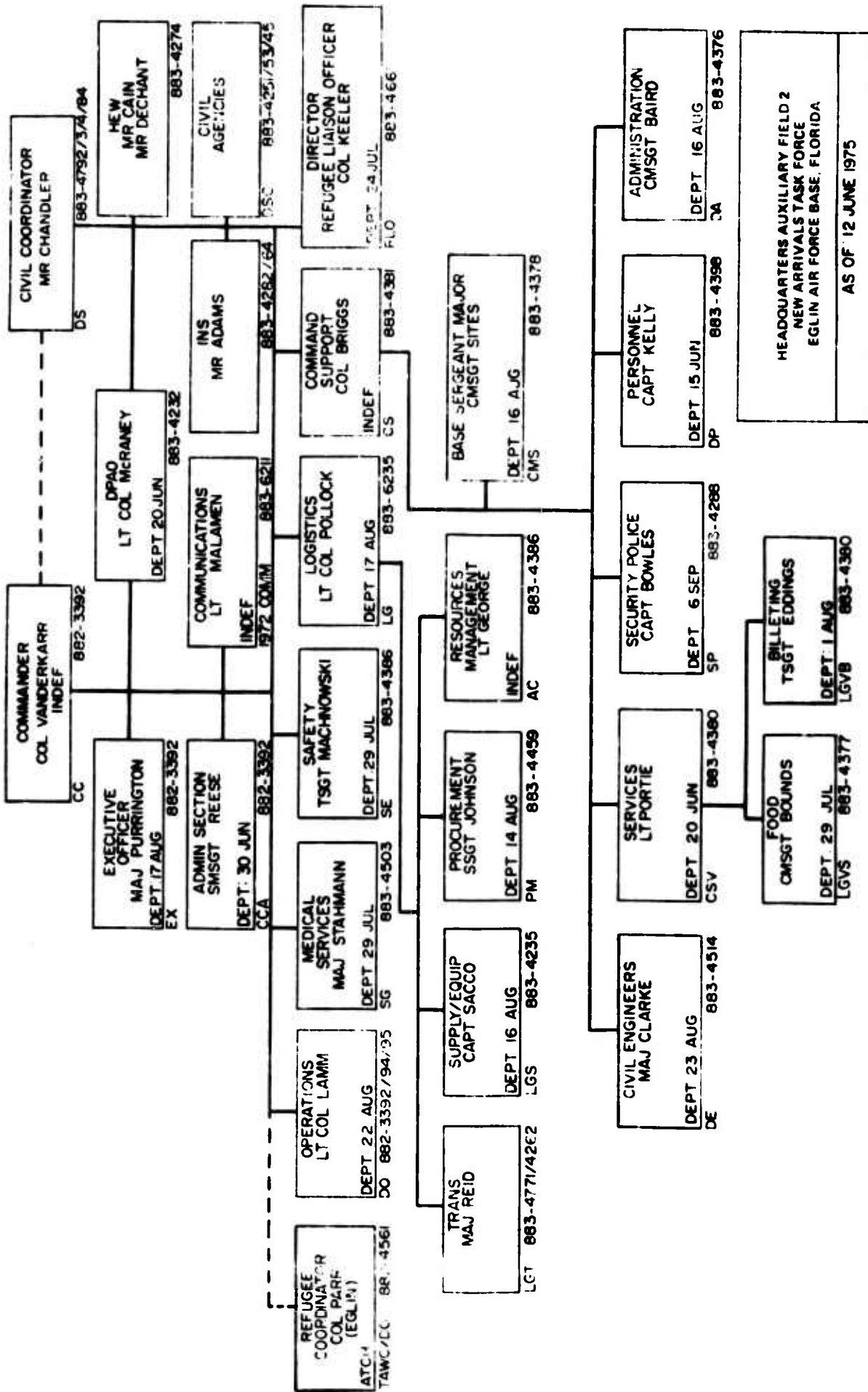


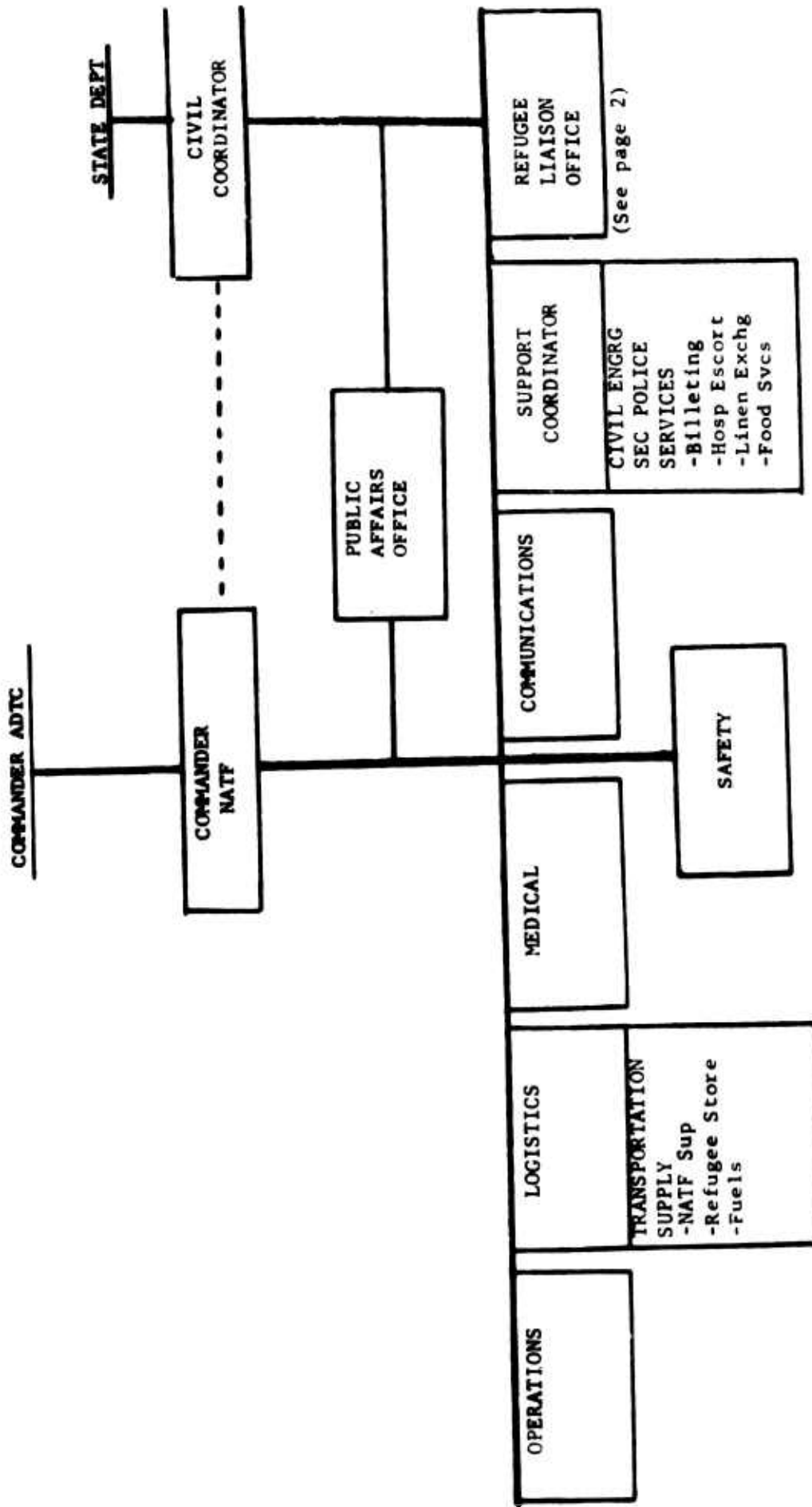
TAB C

Organization Charts



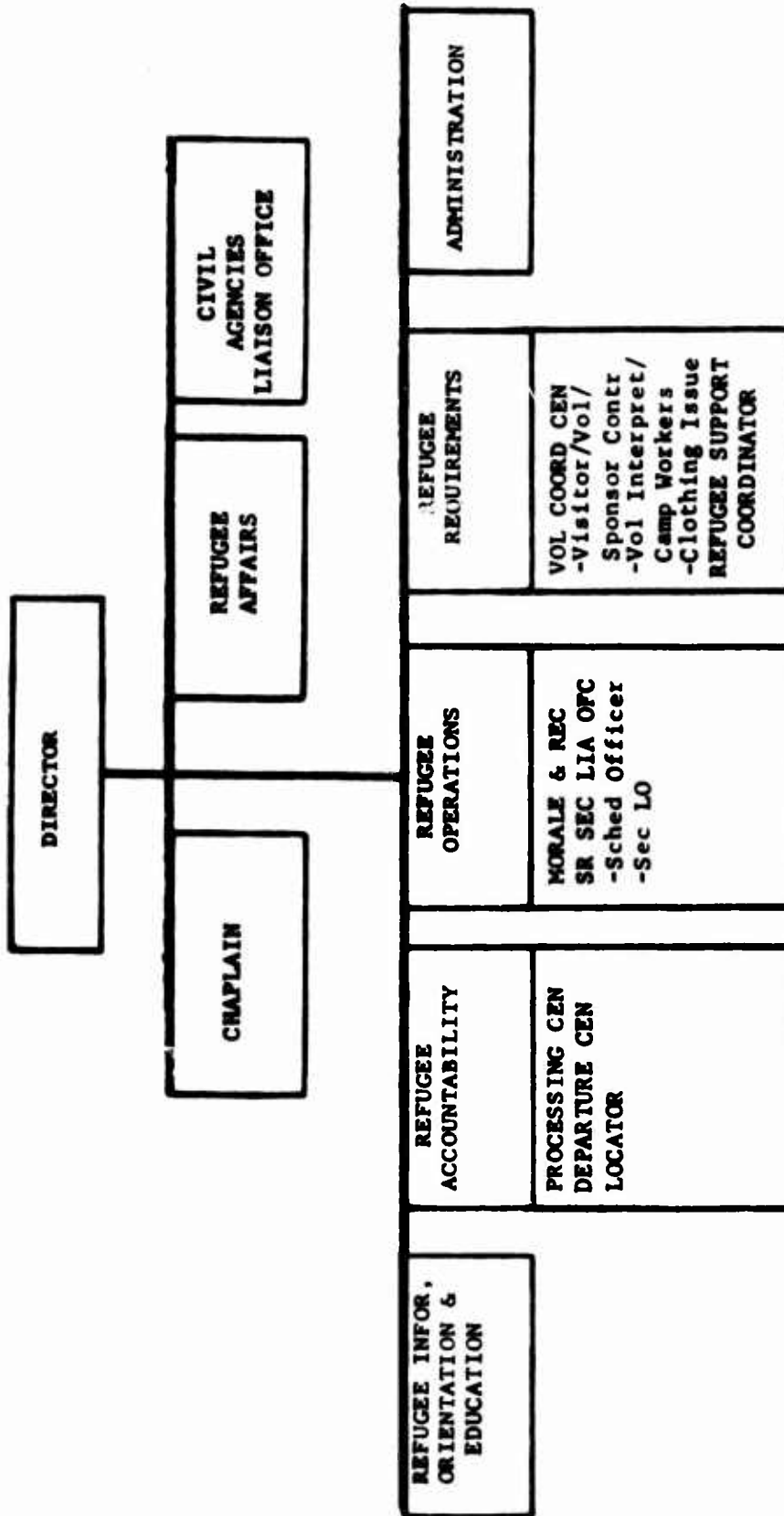






NEW ARRIVALS TASK FORCE  
 Eglin AFB Refugees Reception  
 Center, Eglin AFB, FL  
 25 Jun 75

Refugee Liaison Office



TAB D

Communications Report



**DEPARTMENT OF THE AIR FORCE**  
1972D COMMUNICATIONS SQUADRON (AFCS)  
EGLIN AIR FORCE BASE, FLORIDA 32542



1 JUN 1975

REPLY TO  
ATTN OF: CC

SUBJECT: After Action Reports

TO: NATF/CS

1. The following report is submitted in response to your request and covers the period 24 May - 28 June 1975.

a. Chronological listing and Description of Significant Events.

(1) During this reporting period, there was a significant increase in the number of commercial telephone circuits, provided for the Eglin Refugee Center. Twenty-two additional local exchange lines were added, and Wide Area Telephone Service (WATS) was expanded by 18 circuits for use by the volunteer agencies and officials at Field 2 (See para C(1) below).

(2) The AN/TSW-7 Air Traffic Control Central (mobile control tower) was released on 6 June 1975 for return to the 3rd Mobile Communications Group, Tinker AFB, Oklahoma, as there was no further need for this facility.

(3) The AN/TGC-27 Communications Center, teletype and the AN/TIQ-3 Public Address Sets, which had been held in reserve, were released on 13 June 1975 for return to the 226th Mobile Communications Group, Alabama Air National Guard, Gadsden, Alabama.

b. Identification of Problem Areas/Solutions.

(1) The provision of telephone service on Field 2 has been accomplished through the utilization of the 100-line telephone exchange at Field 2 and the 600-line AN/TTC-28 Mobile Central Office. Local telephone requirements are now routine, i. e. relocation of telephones and additions as required.

(2) Supplying the commercial telephone needs of the Refugee Center has presented some difficulties. Initially, interface with



the commercial telephone companies was provided by Government owned cable between Eglin and Field 2. In addition to the cable, two 24-channel mobile microwave links were installed with terminals at Eglin Main (Building 44) and Field 2 with another 24-channel microwave link serving as a backup facility. Currently, all three microwave links are in operation due to the large number of commercial circuits required at Field 2.

c. Statistical Data

(1) The following voice and record communications facilities have been provided:

- 169 Telephone lines utilizing the AN/TTC-28
- 9 Telephone lines utilizing the Field 2 Exchange
- 3 Telephone lines utilizing the Eglin Main Exchange
- 40 Commercial dial lines (2 to Crestview, 38 to the Valparaiso Exchange)
- 3 Key telephone systems
- 1 Teletype circuit to the Eglin Base Communications Center
- 1 Data circuit to Bethesda, Maryland
- 10 Incoming trunks from Eglin Main
- 10 Outgoing trunks to Eglin Main
- 5 Direct lines to Eglin Main
- 9 Magneto circuits to the Eglin Main Switchboard
- 6 Direct in-dial circuits to Eglin Main
- 3 AUTOVON circuits
- 3 Federal Telephone System Circuits
- 4 WATS circuits, Band 0 (Restricted to intra-state Florida only)
- 17 WATS circuits, Band 5 (Capable of reaching the



contiguous 48 states except Florida).

(2) Communications Costs:

Supplies \$29,765.77

Civilian Labor Costs:

Regular 13,687.02

Overtime 2,913.12

Administrative Communications - Tolls, WATS, FTS, trunks,

Connection Charges, etc.: 26,529.40

Intrabase Radio 3,138.50

Military Pay 48,745.64

Total Direct/Indirect Costs as of 271600L June 1975:

\$124,779.45

d. Recommendations: None.



CLARENCE R. SMITH, Lt Col, USAF  
Commander

TAB E

Logistics Report



DEPARTMENT OF THE AIR FORCE  
HEADQUARTERS EGLIN AFB NEW ARRIVAL TASK FORCE  
EGLIN AIR FORCE BASE, FLORIDA 32542



ATTN: LG

16 July 1975

SUBJECT: After Action Report - Pipeline Phase (EX ltr 1 July 75) \*

TO: NATF/EX → CS

The following report is forwarded for your consideration per instructions contained in subject letter.

a. Chronological Listing of significant Events.

JCS Msg 182131Z June 75 directed that Eglin #2 prepare for surge to 6000 refugees during period 20-25 June 75. This surge required an additional two refrigerators (FSN4110-274-6342) for field kitchen support. These units were obtained - through coordination with TAC LRC - from Harvest Eagle assets maintained by 4400 Mobility Support Flight, Robbins AFB, Georgia. Other requirements generated by this surge were acquired through normal supply channels.

During the "pipeline" phase the logistics effort was directed to stabilizing workloads, consolidating supply activities and establishing more effective procedures for supply support of the Refugee Center. These efforts included RLO Supply Consolidation, relocation of the Baby Food Store, implementation of a ration card for Baby Supplies, and the establishment of lead times for recurring issue request.

b. Problem Areas and Solutions - Paper plates and cups became a problem of the first magnitude when the depot's assets were depleted and the items had to be obtained by local purchase until depot stock was replenished. Also challenging were unusual requests for material for a parade celebrating Buddha's Birthday, potties chairs, needles and thread for use with donated sewing machines, and tickets for control of clothing issue to refugees.

(1) Problem: Redundancy of Supply systems established at the Refugee Center.

Discussion: The following Supply Systems were established during the initial stages of the Refugee Center.

Logistics Supply  
Billoting Supply  
Food Service Supply  
Civil Engineering



\* Corrections made by originating organization

Medical Supply  
RLO Supply

Some of these functions had a duplication of effort which caused processing delays and confusion. Items were in the Supply Systems which should have been included under another unit.

Solution: Logistics Supply took over the RLO Supply functions including the Baby Food Store. Supplies applicable to a Base Supply Sales Store (i.e. Janitorial Supplies, toilet paper) were removed from Billeting Supply and incorporated into Logistics Supply. Isomil was obtained from Medical Supply and was issued by prescription from the Baby Food Store. Bench Stocks were established in each RLO Administration Unit (see attach 1). Food Services Supply initiated a daily report on inventory of support items (plates, cups, spoons, etc). Consumption was calculated to determine levels for reorder points. Average daily consumption for population of 4000-5000 was as follows:

Paper plates	23,000
Forks	13,000
Spoons	13,000
Knives	12,000
Paper cups	36,000

When the emergency level<sup>was</sup> reached, items were reordered to insure timely delivery.

(2) Problem: Method of issue and accountability of supplies in the Refugee Store.

Discussion: The Refugee Store was located in a tent located within Section 3. Inventory was located in 3 different locations. Security of inventory was difficult.

Solution: Logistics Supply assumed responsibility from RLO. The Refugee Store, renamed the Personal and Baby Food Store (P&B), was moved into the first 12 feet of a Butler Building located between the two Vietnamese Chow Halls. It was modified to allow for over-the-counter service. Inventories were consolidated and secured in semi-trailer and in the Baby Food Store. Items for the Ditty Kits were removed and transferred to the Supply Point which was used as an assembly point. These actions resulted in accurate inventories and reorder points along with tighter control over supplies.

(3) Problem: Misuse of Baby Supply items and customer inconveniences.

Discussion: It was discovered that many items located in the Baby Food Store were used by people not authorized their use.

Solution: A Ration Card was given for each child under 24 months of age. Allocation of supplies and a diet was coordinated through the Refugee Center Hospital personnel, Eglin pediatricians, and Fort Chaffee advisors (attach 2&3).

Simalac with iron was chosen as the standard formula. These actions encouraged better diets, reduced the number of daily visits and controlled distribution of food only to infants under 24 months.

(4) Problem: Distribution of ditty kits and personal hygiene items.

Discussion: Ditty Kits were given to incoming refugees. These kits originally contained the following:

Male: comb, toothbrush, toothpaste, razor, razor blades and shaving cream.

Female & Children: comb, toothbrush, toothpaste, soap was given at RLO Administrative Tents.

Population breakdown during Phase II was as follows:

Female between 12-35	= 23%
Male (all)	= 57.7%
Male of shaving age	= 40%
Infants under 30 months	= 5.5%

It was later discovered that most males received shaving supplies at Guam, therefore they were discontinued in the kits. Shaving Supplies were added to RLO Bench Stocks.

Solution: Originally Ditty Kits and Initial Issue of Baby Food items were distributed to the section utilizing the following percentage breakdown.

Male - 60%  
Female & Children - 80%  
Babies under 3 - 8%  
Females receiving Sanitary Napkins - 8%

Note this includes 20% increase to account for an imbalance resulting from taking a smaller percentage of overall population.

Discussion/Solution: There appeared to be an excessive use of shampoo. For a population of 5000 refugees using  $\frac{1}{4}$  oz of shampoo, it would require an average of 178 7oz bottles per day. Shampoo was distributed to the RLO section which reduced requirements below calculated quantities.

Discussion/Solution: Unusual demands were placed on Sanitary Napkins. It was discovered they were used in place of paper towels and even sewn together as mattresses. Toilet paper was given to all the mothers of babies. A ration system was not applied because the cost of implementing a system would exceed resulting savings.

(5) Problem: Excessive Ice Usage.

Discussion: Ice was originally issued on an individual basis. Soon excessive usage in excess of 400 bags ~~(12-lb bags)~~ of ice per day was experienced. Prices was \$.42 per bag.

Solution: We established ice runs to deliver the ice to the customers. RLO Administration areas originally received one bag for every hundred people

to cool medication. Ice was delivered three times daily. The support agencies received one bag per tent once a day except in high populated areas where the allotment was increased. An average of 142 bags of ice were used resulting in a daily expenditure of approximately \$60.00.

(6) Problem: Adequate supplies/equipment for support of RLO Volunteer Coordination Center.

Discussion: This function is comprised of four elements - Coordination Center, RLO headquarters, Departure Control and Administration Section which required supplies/equipment that could not adequately be determined because of lack of previous experience with this type operation.

Solution: Through best judgement and close coordination with users the attached lists contained at atch 4, 5, 6 & 7 were developed and refined to provide support required.

c. Statistical Data - Most of the statistical data relative to the logistics functions is reflected in reports submitted by other agencies i.e. procurement, budget and supply transaction document. However the following information relative to transportation support is submitted for consideration and represents an average day with a refugee population of 5000-6000.

AVERAGE/DAY

Runs made	32
Refugees transported	99
Support personnel transported	55
Transportation requests written	20
Refugees ticketed by SATO	75

b. Recommendation - Adopt supply support procedures reflected in solutions outlined in this report for future operations similarly conducted.

*Leon O. Pollock*

LEON O. POLLOCK, Lt Col, USAF  
Director of Logistics

7 Atch

1. Bench Stock RLC Admin Tents
2. Baby Subsistence Card
3. Baby Supplies
4. Sup/Equip RLO Volunteer Coor Center
5. Sup/Equip RLO Hq
6. Sup/Equip RLO Departure Control
7. Sup/Equip RLO Admin Section

Bench Stock Levels for RLO Administration Tents

Simalac	6
Nipples	6
Baby Food	
Meat	6
Vegetable	6
Fruit	6
Juice	6
Diapers	
Newborn	2 ea
Overnight	2 ea
Sanitary Napkins	6 ea
Shampoo (7 oz)	12 ea
Toothpaste	12 ea
Laundry Soap	12 ea
Hand Soap	12 ea
Shaving Cream	12 ea
Razors	6 ea
Razor blades	25 ea
Garbage Bags - plastic	2 boxes, 125/box
Toilet paper	100 rolls
Cups	10 tubes, 75/tube

BABY SUBSISTENCE CARD

**MONTH** \_\_\_\_\_

	1	2	3	4	5	6	7	8	9	10	11	12	13	14
<b>BRK.</b>														
<b>LUN.</b>														
<b>SUP.</b>														

**BABY SUBSISTENCE CARD**

**NAME** \_\_\_\_\_

**DATE OF BIRTH** \_\_\_\_\_  
                                    **YEAR**      **MONTH**      **DAY**

**SECTION** \_\_\_\_\_

15	16	17	18	19	20	21	22	23	24	25	26	27	28	29	30	31

**CARD NO.** \_\_\_\_\_



Recommended Allocation of Baby Supplies

Age in Months	0-1	2-3	3-6	7-12	13-24
Simalac with iron 4oz	6	6	6	6	0
Vegetable	0	1	1	2	2
Meat	0	0	1	1	2
Fruit	0	1	1	2	2
Cereal (4oz)	0	1	1	1	0

(Quantities in 4 oz bottles)

Extra quantities were given to those requiring specific items. Receipt of diapers, lotion etc were annotated on the form.

AUTHORIZED SUPPLIES/EQUIPMENT REQ VOLUNTEER COORDINATION CENTER

<u>FSN</u>	<u>DESCRIPTION</u>	<u>AUTHORIZED QUANTITY</u>
6645005303342	Clock	1
7110007586146	Desk, Flat Top	6
7110001774901	Office Table Sm	3
7110002738793	Chair Rot W/Arm	6
7110002738782	Chair Straight W/Arm	7
7105002698463	Chair Folding	20
7110005515485	Cabinet, Filing 5Dr Legal	1
7110001430822	Table Office 34X60	3
7110002626650	Book Case 2 Sec	2
7110002626681	Book Case Top	1
7110002626673	Book Case, Base	1
7110001326650	Blackboard	1
7125	Cabinet, Storage	2
71250002698534	Cabinet, Storage 36X	5
7430	Typewriter Manual	1
7430002544319	Typewriter Manual	2
7330008938550	Cooler, Igloo	5
7195009866400	Bulletinboard	1
	Bicycle	1
84059247936	Ponchos	4
	Sewing Machine	14

Atch 4

AUTHORIZED SUPPLIES/EQUIPMENT RLO HQ

<u>FSN</u>	<u>DESCRIPTION</u>	<u>AUTHORIZED QUANTITY</u>
6645005303342	Clock	1
7110001774901	Office Table Sm	3
7110001430822	Office Table 34X60	8
7110007586146	Desk, Flat Top	2
7110004018042	Typist Chair	3
7110002738793	Chair Rot/w Arm	5
7110002738782	Chair Straight w/Arm	7
7105002698463	Chair Folding	4
7110005515485	Cabinet File 5 Dr Legal	1
7110002626650	Book Case 2 Sec	2
7110002626681	Book Case Top	1
7110002626673	Book Case Base	1
71250002698534	Cabinet, Store 36X	1
7330008938550	Igloo, Cooler	2
	Tape Recorder	1
5820	Walkie Talkie	10
	Typewriter Elec	3
6130	Charger for 10 Walkie Talkie	1
	Bicycle	1
8405-924-7936	Poncho's	8

AUTHORIZED SUPPLIES/EQUIPMENT RLO DEPARTURE CONTROL

<u>FCN</u>	<u>DESCRIPTION</u>	<u>AUTHORIZED QUANTITY</u>
6645005303342	Clock	2
7110001430835 (Left)	Desk, Typist 60X34	2
0838 (Right)		
7110007586146	Desk, Exec	2
7110001430822	Tables, Office 34X60	1
7110002738793	Chairs, Rot/w Arms	2
7110002738791	Chairs, Typist	4
7110002738782	Chairs, Straight W/Arms	2
7110001326650	Blackboard	1
7110005515495	Cabinet, File 5Dr Letter	1
7110002626650	Book Case 3 Sec	1
7110002626681	Top	1
7110002626673	Base	1
7110001130633	Table, Office	13
7105002698463	Chairs, Folding	4
7195009866400	Bulletin Board	2
5820	Walkie Talkie	1
	Bicycle	1
6130	Walkie Talkie Charger	1
84059247936	Poncho's	4

AUTHORIZED SUPPLIES/EQUIPMENT RLO ADMINISTRATION SECTION

<u>FSN</u>	<u>DESCRIPTION</u>	<u>AUTHORIZED QUANTITY</u>
3590001208463	Clipper, Barber	1
3590001616913	Shears Barber's	2
3590001708462	Clipper, Hair	1
3590003958128	Blade Barber Shear	4
3590000919428	Blade Barber Shear	4
3750009030720	Rake Lawn	4
5120008891796	Staple Gun	1
5120008925485	Hammer	2
5110002933435	Saw	1
5440005144487	Ladder	1
53150008892605	Staple 1/2"	4
5120002228852	Screwdriver	2
5120005960860	Screwdriver Crosstip	2
5120002237397	Pliers	2
5120002405328	Wrench, Open End, Adjustable	2
5120002406040	Crowbar	1
5210287335	Tape, Measuring	1
6230002420005	Flashlight	4
6230007887399	Lantern, Battery Powered	4
6230002997771	Lamp, Desk	5
7110001430833	Desk, Typing	1
7110001430820	Table, Office	4
7125002698534	Cabinet Storage 36X	1
7125	Cabinet, Storage Samll	1
7110005515493	Cabinet, Filing 2Dr	1
7430002544319	Typewriter, Manual	1
7110001326650	Blackboard	1
7195009866400	Bulletinboard	1
7105002698463	Chair, Folding	10
7920002672967	Broom Street	1
7920001415452	Broom, Handle	1
7920002922369	Broom	6
7110002738791	Chair, Typist	1
7290002248308	Dust Pan	6
7040002743875	Pail Metal	2
7240001600440	Cans, Ash and Garbage	2
7240001611143	Cover, Can	2
4020007102074	Rope	1
5120002933331	Shovel	1
3340002920896	Lock Combination	2
	Coffee Urn (Baby Bottles)	1
	Refrigerator	1
44059247030	Poncho's	4
5820	Walkie Talkie	1
	Iron & Ironing Board	2

TAB F

**Personnel Status Chart**









TAB G

Manning Documents



**DEPARTMENT OF THE AIR FORCE**  
**AFSC MANAGEMENT ENGINEERING TEAM (DETACHMENT 23)**  
**EGLIN AIR FORCE BASE, FLORIDA 32542**



REPLY TO


ATTN OF AFSC MET Det 23

30 May 75

SUBJECT Revised Manning Document - 30 May 75

TO Commander, NATF  
Eglin Refugee Reception Center

1. The attached manning document dated 30 May 75 supersedes the document dated 21 May 75.
2. The procedures for changing the document as stated in our letter, 21 May 75, remains in effect.

  
LEE R. TERRELL  
Chief

Atch  
Manning Document -  
30 May 75



**HELIX AFB**  
**REFUGEE PROCESSING CENTER**  
**MANNING DOCUMENT**  
**MAY 1975**

**30 MAY 1975**

(Based on a 72 hour week & supporting 5000 Refugees)

	AFSC	GRADE	BR
<b><u>COMMAND/1010</u></b>			
Commander	0066	COL	1
Vice Commander	0066	Col	1
Executive Off	7024	Maj	1
			3
<b><u>ADMINISTRATION/1012</u></b>			
Admin Supt	70490	SMS	1
Admin Spec	70270	TSG	1
			2
<b><u>OPERATIONS/1300</u></b>			
Director of Ops/ Chief Cmd Post	0036	LTC	1
Graphic Spec	23151	SSG	1
			2
<b><u>COMMAND POST/1350</u></b>			
Air Oper Off	14XX	MAJ	4
Air Oper Off	14XX	CPT	4
Air Ops Spec	27170	TSG	2
Air Ops Spec	27150	SSG	2
Admin Spec	70250	SGT	4
			16
<b><u>INFORMATION/1040</u></b>			
Information Str Off	7916	LTC	1
Information Off	7924	CPT	2
Information Supt	79190	SMS	1
Information Spec	79150	SSG	1
Admin Spec	70250	SSG	1
			6
<b><u>MEDICAL/500X</u></b>			
Health Svc Admin	9025	CPT	1
Family Physician	9346	CPT	4
Internist	9386	MAJ	1
Veterinarian	9925	CPT	1

30 MAY

	AFSC	GRADE	NR
<u>MEDICAL/5XXX (Cont)</u>			
Dental Officer	9826	CPT	1
Aero Med Physician	9356	MAJ	1
Clinical Nurse	9756	CPT	3
Med Svc Supt	90290	SMS	1
Med Svc Tech	90270	MSG	1
Med Svc Tech	90270	TSG	1
Med Svc Spec	90250	SSG	5
Med Svc Spec	90250	SGT	4
Oper Room Tech	90272	TSG	1
Oper Room Spec	90252	SSG	1
Radiology Tech	90370	TSG	1
Med Lab Tech	90470	TSG	1
Med Lab Spec	90450	SSG	1
Med Admin Supt	90690	SMS	1
Med Admin Spec	90650	SSG	1
Med Admin Spec	90650	SGT	1
Envir Health Tech	90770	TSG	1
Envir Health Spec	90750	SSG	1
Veterinary Tech	90870	MSG	1
Veterinary Spec	90850	SGT	1
Biomed Equip Maint Tech	40370	TSG	1
Med Mat Supv	91570	TSG	1
Med Mat Spec	91550	SSG	1
Pharmacy Tech	90570	TSG	1
Dental Spec	98150	SSG	1
			41
<u>SAFETY/106X</u>			
Safety Tech	24170	TSG	2
<u>LOGISTICS/12XX</u>			
Logistics Stf Off	6616	LTC	1
Supply Opns Off	6424	MAJ	1
Inv Mgt Supv	64570	MSG	1
Inv Mgt Supv	64570	TSG	2
Admin Spec	70250	SSG	1
			6
<u>VEHICLE OPERATIONS/4210</u>			
Motor Veh Mgt Off	6024	MAJ	1
Motor Veh Mgt Off	6024	LT	1
Veh Opns Supt	60390	EMC	1
Veh Opns Tech	60370	TSG	2
Veh Operator/Disp	60350	SSG	11
Veh Operator/Disp	60350	SGT	14
Veh Opns Supv	60370	MSG	2
			67

30 MAY 1975

	AFSC	GRADE	NR
<u>TRAFFIC MGT 07C/4220</u>			
Pax & Household Spec	60270	TSG	1
Pax & Household Spec	60250	SSG	3
Pax & Household Spec	60250	SGT	2
			6
<u>MATF SUPPLY/41XX</u>			
Inv Mgt Supv	64570	TSG	1
Inv Mgt Spec	64550	SSG	1
Inv Mgt Spec	64550	SGT	2
Mat Fac Supv	64770	TSG	1
Mat Fac Spec	64750	SSG	1
Mat Fac Spec	64750	SGT	2
			8
<u>RLO SUPPLY</u>			
Sup Off	6424	CPT/LT	1
Inv Mgt Supv	64570	TSG	1
Inv Mgt Spec	64550	SSG	1
			3
<u>REFUGEE STORE</u>			
Mat Fac Spec	64750	SSG	2
Inv Mgt Spec	64550	CIV	2
			4
<u>FUELS/4170</u>			
Fuels Spec	63150	SGT	2
<u>PROCUREMENT/1251</u>			
Procurement Supv	65170	MSG	1
<u>ACCT &amp; FINANCE/1510</u>			
Acct & Finance Off	6724	LT	1
<u>SUPPORT COORDINATOR</u>			
Chief	0026	COL	1
Vice Chief	0026	LTC	1
Admin Supt	70490	CMS	1
Admin Spec	70250	SSG	1
			4
<u>CIVIL ENGINEERING/44XX</u>			
Civ Engr Stf Off	5516	MAJ	1
Structural Supt	55295	SMS	1
Structural Supt	55295	CIV	1
Admin Spec	70250	CIV	1
Admin Spec	70250	CIV	1
Fire Protection Supv	57170	CIV	1
Fire Protection Spec	57150	CIV	3
Fire Protection Spec	57150	CIV	4
App Fire Prot Spec	57130	CIV	5
Prog/Work Cont Tech	55570	CIV	1
Prog/Work Cont Tech	55570	CIV	1
Prog/Work Cont Spec	55530	CIV	3

30 MAY 1975

	AFSC	GRADE	NR
<u>CIVIL ENGINEERING/44XX (Con't)</u>			
Inv Mgt Supv	64570	CIV	1
Mat Fac Spec	64750	CIV	2
Const Equip Opr	55151	CIV	3
App Pav Maint Spec	55150	CIV	7
Carpenter Spec	55250	CIV	2
Carpenter Spec	55250	CIV	4
Plumbing Spec	55255	CIV	2
Plumbing Spec	55255	CIV	4
Ref/Air Cond Spec	54550	CIV	2
Electrician	54250	CIV	2
Electrician	54250	CIV	4
Entomology Spec	56650	CIV	2
(Power Production Support will be provided by Eglin BCE)			
58			

<u>SERVICES STAFF/46XX</u>			
Supply Svs Ops Off	62XX	LT	1
Supply Svc Supv	61170	TSG	1
			2

<u>BILLETING/465X</u>			
Admin Supv	70270	TSG	1
Admin Supv	70270	SSG	1
Admin Spec	70250	SGT	2
Admin Spec	70250	CIV	2
			6

<u>HOSPITAL ESCORT/XXXX</u>			
Admin Spec	70250	SSG	2
			2

<u>LINEN EXCHANGE/468X</u>			
Apr Supply Svc Spec	61130	AIC	3

<u>FOOD SERVICE/4670</u>			
Food Service Supt	62290	CMS	1
Food Service Supt	62290	SMS	1
Food Svc Supt	62270	MSG	7
Food Svc Supt	62270	TSG	17
Cook	62250	SSG	27
Cook	62250	SGT	20
App Cook	62230	AIC	36
App Cook (KPI)	62230	CIV	84
Inv Mgt Spec	64550	SSG	4
Admin Spec	70250	SGT	3
Cook	62250	CIV	20
			220

<u>SECURITY POLICE/43XX</u>			
Security Police Off	8124	CPT	1
Security Police Supt	81291	SMS	1

	AFSC	GRADE	NR
<u>SECURITY POLICE/43XX (con't)</u>			
Law Enforcement Supv	81271	MSG	1
Law Enforcement Supv	81271	TTC	3
Security Spec	81250	SSG	23
Security Spec	81250	SGT	23
App Security Spec	81230	AIC	39
Admin Spec	70250	SSG	1
Investigator	81271	TSG	1
			93

ADMINISTRATION/11XX

Chief	70490	CMS	1
Admin Spec	70270	TSG	1
Admin Spec	70250	SSG	1
Admin Spec	70250	SGT	2
Apr Admin Spec	70230	AIC	3
			8

PERSONNEL/16XX

Personnel Off	7316	MAJ	1
Pers Tech	73270	MSG	1
Pers Tech	73270	TSG	1
Pers Tech	73270	SSG	2
Pers Spec	73250	SGT	1
Admin Spec	70250	SSG	1
			7

REFUGEE LIAISON OFFICEDIRECTOR'S OFC

Director	2116	COL	1
Exec Off	7016	LTC	1
Secretary	70450	CIV	1
Dep Director	2116	LTC	1
Admin Off	7024	MAJ	1
Steno Spec	70450	CIV	1
Interpreter	20350	CIV	2
Senior Enl Advisor	70490	CMS	1
			9

CHAPLAIN/105X

Chaplain	8916	LTC	1
Chap Mgt Tech	70170	TSG	2
Chap Mgt Spec	70150	SGT	1
Chap Mgt Spec	70150	AIC	1
Chaplain	L8924	CIV	3
Interpreter	L8924	REF	(2)

NOTE: The Chaplain Function can be augmented 8  
by Priests who are among the refugees.  
"L" Prefix denotes requirement for  
Linguist.

30 MAY 1975

	AFSC	GRADE	NR
<u>REFUGEE INFO, ORIENTATION, &amp; EDUCATION</u>			
Education Supv	79170	MSG	1
Education Off	7524	CIV	1
Education Spec	75150	CIV	2
Writer	79150	CIV	1
Writer	79150	CIV	1
Admin Spec	70250	CIV	1
Interpreter	20350	CIV	1
Writer	79150	CIV	1
			9
<u>REQUIREMENTS &amp; ACCOUNTABILITY</u>			
Chief	14XX	LTC	1
Admin Tech	70270	TSG	1
			2
<u>VOLUNTEER COORD CENTER</u>			
Chief	XXX	CPT	1
Exec Supt Off	XXXX	LT	1
			2
<u>VISITOR/VOLUNTEER/SPONSOR CONTROL</u>			
Admin Supv	70270	TSG	1
Admin Spec	70250	SSG	1
Admin Spec	70250	SGT	1
			3
<u>VOL INTERPRETERS/CAMPWORKERS SEC</u>			
Serv Spec	7419J	CIV	1
Admin Supv	70270	TSG	1
Admin Supv	70270	CIV	1
Admin Spec	70250	CIV	1
			4
<u>REFUGEE SUPPORT COORDINATOR</u>			
Sup Off	6424	CPT	1
Supply Serv Spec	XXXXX	AIC	1
Supply Serv Spec	64550	SSG	1
			7
<u>REFUGEE ACCOUNTABILITY CENTER</u>			
Exec Supt Off	7024	CPT	1
Admin Spec	70270	MSG	1
			2
<u>REFUGEE PROCESSING CENTER</u>			
Exec Supt Off	7024	LT	1
Admin Supv	70270	TSG	1
Admin Spec	70250	SSG	1
Admin Spec	70250	SGT	3
			6



	AFSC	GRADE	NR
<u>REFUGEE LOCATOR SEC</u>			
Admin Supv	70270	TSG	1
Admin Spec	70250	SSG	1
Admin Spec	70230	CIV	2
Admin Spec	70250	CIV	2
			6
<u>REFUGEE DEPARTURE CENTER</u>			
Personnel Off	7324	CPT	1
Personnel Off	7324	LT	1
Personnel Tech	73250	CIV	4
Personnel Spec	70230	CIV	2
			8
<u>REFUGEE OPNS</u>			
Chief	*XXXX	LTC	1
Assistant Chief	*XXXX	MAJ	1
Admin Supv	70270	TSG	1
Ops Duty Off	XXXX	CAPT	3
Ops Duty NCO	XXXXX	TSG	3
			9
<u>REFUGEE MORALE &amp; REC</u>			
Special Svc Supt	74191	CMS	1
Spec Svc Tech	74171	MSG	1
Spec Svc Tech	74171	TSG	2
Spec Svc Spec	74151	CIV	6
Spec Svc Spec	74151	CIV	5
			15
<u>REFUGEE AFFAIRS</u>			
Exec Supt Off	*XXXX	LTC	1
Interpreter	20350	REF	(1)
			1
<u>SENIOR REFUGEE LIAISON OFC</u>			
Chief	*XXXX	LTC	1
Admin Tech	70270	MSG	1
Interpreter	20350	REF	(1)
			2
<u>SCHEDULING OFFICE</u>			
Scheduling Off	*XXXX	CPT	1
<u>SECTION REFUGEE LIAISON OFFICERS</u>			
Exec Supt Off	*XXXX	CPT	8
Exec Supt Off	*XXXX	LT	24
Admin Supv	XXXXX	TSG	16
			48
<u>ADMIN OFC</u>			
Admin Supv	70270	MSG	1
Admin Spec	70250	SSG	2
			3

\*NOTE: Volunteers with SEA exp in PsyOps, Civic Affairs, CORDS, intel exp. etc.  
AFSC such as 14XX, 15XX, 22XX, 80XX or any experienced officer.

30 MAY 1954

<u>COMMUNICATIONS/38XX</u>	AFSC	GRADE	NR
Comm-Elec Off	3055	LT	1
Grd Comm Maint Supt	30496	SMS	1
Grd Radio Maint Tech	30454	SSG	1
Grd Radio Maint Tech	30454	SGT	2
O/S Wire Plant Tech	36254	SSG	3
O/S Wire Plant Tech	36254	SGT	3
O/S Wire Plant Tech	36274	MSG	1
I/S Wire Plant Tech	36251	SSG	3
I/S Wire Plant Tech	36251	SGT	4
I/S Wire Plant Tech	36271	TSG	1
Cable Splicer	36154	SSG	1
Cable Splicer	36154	SGT	1
Workload Control Tech	30454	SSG	1
Workload Control Tech	30454	SGT	2
TRC 97 Maint	30450	SSG	7
TRC 97 Maint	30450	SGT	9
TRC 97 Maint	30470	TSG	1
TTC 28 (Tele Central)	29170	TSG	1
TTC 28 (Tele Central)	29150	SSG	4
TTC 28 (Tele Central)	29150	SGT	8
TGC 27 (Comm Center)	29170	TSG	1
TGC 27 (Comm Center)	29150	SSG	4
TGC 27 (Comm Center)	29150	SGT	4
TGC 27 (Comm Center)	29150	Civ	3
Crypto Maint	30650	SSG	2
Crypto Maint	30650	SGT	1
Inside Plant Maint Supt	36390	SMS	1
Teletype Maint	36350	SSG	2
Teletype Maint	36350	SGT	1
AGE Maint/Pwr Prod	54370	TSG	1
AGE Maint/Pwr Prod	54350	SSG	6
AGE Maint/Pwr Prod	54350	SGT	4
Tech Controller	30770	TSG	1
Tech Controller	30750	SSG	3
Tech Controller	30750	SGT	4
Ref-A/C Spec	54550	SGT	4
			<u>97</u>

AERIAL PORT OPS/4230

Contingency only - To be used when C-130 scheduled)

MAINTENANCE

Acft Maint Supt Off	4096	LTC	1
Acft Maint Supt	4024	LT	1
Acft Maint Tech	43171F	TSG	1
Acft Maint Spec	43151F	SSG	1
Acft Maint Spec	43151F	SGT	2
Aero Eng Eq Repair	42151	SSG	1

30 MAY 1975

	AFSC	GRADE	NR
<u>MAINTENANCE (Continued)</u>			
Acft Pseud Rep Tech	42172	TSG	1
Acft Elect Rep Tech	43370	TSG	1
Acft Maint Tech	43171F	MSG	1
<u>OPERATIONS</u>			
Air Ops Gen	1495Z	MAJ	1
Air Ops Spec	27150	SSG	1
<u>AIR CARGO</u>			
Air Trans Supv	60 71	MSG	1
Air Trans Supv	60 71	TSG	1
Air Cargo Spec	60 51	SSG	2
Air Cargo Spec	60 51	SGT	2
			<u>18</u>

30 MAY 1973

## RECAP

	<u>21 May</u> <u>Document</u>	<u>30 May</u> <u>Document</u>	<u>Net</u> <u>Change</u>	O	A	C	T
Command	3	3		3	0	0	3
Admin	2	2		0	2	0	2
Ops/Command Post	18	18		9	9	0	18
Information	6	6		3	3	0	6
Medical	41	41		11	30	0	41
Safety	2	2		0	2	0	2
Logistics	6	6		2	4	0	6
Veh Ops	32	32		2	30	0	32
TMO	6	6		0	6	0	6
NATF Supply	8	8		0	8	0	8
RLO Supply	3	3		1	2	0	3
Refugee Store	4	4		0	2	2	4
Fuels	2	2		0	2	0	2
Procurement	1	1		0	1	0	1
Acct & Finance	1	1		1	0	0	1
Support Coord	4	4		2	2	0	4
Civ Eng	58	58		1	1	56	58
Services Staff	2	2		1	1	0	2
Billeting	18	6	-12	0	4	2	6
Hospital Escort		2	+ 2	0	2	0	2
Linen Exch	2	3	+ 1	0	3	0	3
Food Service	242	220	-22	0	116	104	220
Security Police	93	93		1	92	0	93
Admin	8	8		0	8	0	8
Personnel	7	7		1	6	0	7
Refugee Liaison							
Directors Ofc	7	9	+ 2	4	1	4	9
Chaplain	8	8		1	4	3	8
Refugee Info, Orient & Ed	7	9	+ 2	0	1	8	9
Rqmts/Acct	2	2		1	1	0	2
Vol Coord Ctr	2	2		2	0	0	2
Visitor/Volunteer/Sponsor Control	1	3	+ 2	0	3	0	3
Vol Interpret/Camp Wkrs	3	4	+ 1	0	1	3	4
Refugee Support Coord	6	7	+ 1	1	6	0	7
Refugee Acct	2	2		1	1	0	2
Refugee Processing Center		6	+ 6	1	5	0	6
Refugee Locator	6	6		0	2	4	6
Refugee Depart Ctr	6	8	+ 2	2	0	6	8
Refugee Opns	3	9	+ 6	5	4	0	9
Refugee Morale/Recrea	15	15		0	4	11	15
Refugee Affairs	1	1		1	0	0	1
Sr Refugee Liaison	2	2		1	1	0	2
Office	1	1		1	0	0	1
Sec Ref Lia Off	50	48	- 2	32	16	0	48
Admin Off	3	3		0	3	0	3
Communications	97	97		1	96	0	97
Total	791	780	- 11	92	482	206	780
Aerial Port Sq Det - Contingency							
Only to be provided by local							
Aerial Port Sq	18	18					

Changes from last Manning Document

<u>MIL</u>	<u>CIV</u>	<u>TOTAL CHANGE</u>
-120	+109	-11

RECAP

<u>OFF</u>	<u>AMN</u>	<u>CIV</u>	<u>Total</u>
92	482	206	780

Excludes Aerial Port Sq.

DEPARTMENT OF THE AIR FORCE  
HEADQUARTERS ARMAMENT DEVELOPMENT AND TEST CENTER (AFSC)  
EGLIN AIR FORCE BASE, FLORIDA 32542



TO: NATF/CC

1 July 1975

SUBJECT: Civilianization and Reduction of NATF Resources

NATF Functional Managers

1. The attached correspondence from AF/PRM and AFSC/CV recognizes the efforts of all concerned in performance of their duties associated with Project New Arrival. It is obvious from the attached letter that they are aware of the tremendous effort that has been put forth. One particular point in the letter we would like to call your attention to is their repeated suggestion that we convert more military personnel to temporary hire civilian employees. As pointed out in the letter every effort should be made to do this in order to avoid degradation of the Air Force mission while at the same time we are performing the duties and responsibilities associated with the refugee program. It is their strong suggestion and ours also that the TDY military personnel should be released at the earliest possible time in order to return to their home station and assigned duties.
2. Upon review of the 30 June manning document, it is apparent that many more positions could be converted to temporary hire civilian employees in a continuing effort to comply with the suggested objective of higher headquarters.
3. The attached NATF manning document has been reviewed by MET 23 and possible additional military to civilian conversions identified by an asterisk. All positions identified should be thoroughly reviewed by functional managers and considered for conversion. Incumbent TDY personnel of those positions affected should be released as soon as practical.
4. Requested conversion and other changes should be identified to MET 23 in writing as soon as possible. MET 23 will update the 30 June document on 15 July 75. It is important that all NATF organizational managers make every effort to assist MET 23 in identifying additional positions for conversion or reduction.

  
DONALD L. VANDEPARR, Col, USAF  
Commander, NATF

- 3 Atchs
1. AFSC/CV ltr 26 Jun 75
  2. AFPRM ltr 11 Jun 75
  3. 30 Jun. 75 Manning Document



DEPARTMENT OF THE AIR FORCE  
HEADQUARTERS AIR FORCE SYSTEMS COMMAND  
ANDREWS AIR FORCE BASE, D.C. 20334



REPLY TO  
ATTN OF CV

26 JUN 1975

SUBJECT Organization/Manning - New Arrivals Task Force

TO ADTC/CC

1. The attached HQ USAF/PRM letter is forwarded for your guidance and compliance.
2. A review of your current provisional manning guide (30 May 1975 as amended by Change 1, 13 June 1975) reveals the number of temporary civilian overhires has already been doubled since the visit of the Evaluation Team. Your efforts in this direction are certainly noteworthy; however, the high level interest expressed in the attached correspondence indicates further emphasis in this area is expected.
3. I appreciate the fact that you have had to work your manning problem on a day-to-day basis. However, your prime objective must now be to expeditiously utilize temporary overhire civilians to the maximum extent possible.
4. In closing, I extend my personal gratitude for the manner in which you have been accomplishing this arduous task and offer the assistance of my office if required in the future.

SIGNED  
JOHN B. HUDSON, Lt Gen, USAF  
Vice Commander

1 Atch  
HQ USAF PRM Ltr, 11 Jun 75  
w/5 Atch

Cy to: ✓ AFSC MET (Det 23)

AFSC MET (Det 23)

15  
Atc 61

DEPARTMENT OF THE AIR FORCE  
HEADQUARTERS UNITED STATES AIR FORCE  
WASHINGTON, D.C.

13 JUN 3 10



11 JUN 1975

REPLY TO  
ATTN: PRM

SUBJECT: Organization/Manning - New Arrivals Task Force (Your Ltr, 16 May 1975)

AFSC/CV

OPR: DC  
SUSP: 75  
INFO: DF  
\* DE

1. As requested by Major General Lane, NATF/CC, a Composite Evaluation Team, staffed as indicated at Attachment 1, conducted an on-site evaluation of the proposed manpower and organization requirements of the Eglin AFB Refugee Reception Center during the period of 18-20 May 1975.

OO —

2. On 20 May 1975, the Evaluation Team provided NATF/CC a memorandum (Atch 2) which approved a provisional manning guide and an organization structure as presented at Attachments 3 and 4. The memorandum further recommended that temporary civilian over-hires be used to the maximum extent possible in all refugee activities. This recommendation has been reinforced by the memorandum at Attachment 5 from the Assistant Secretary of Defense (Comptroller) which transmits correspondence between Secretary Schlesinger and Senator Inouye. As stated in that correspondence, we must avoid any degradation of the readiness of our operating forces. Accordingly, participation by permanent Department of the Air Force personnel should be reduced, where feasible, by replacing permanent military and civilian personnel with temporary civilian over-hires.

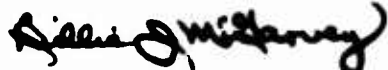
\* CCB ✓ —  
CV —  
\* CVB —  
CS ✓ —  
CBB ✓ —  
+ 1/1  
1/2

3. The memorandum provided to NATF/CC further stipulated that the Eglin AFB AFSC Management Engineering Team would reevaluate the manning guide not later than 30 June 1975 and submit the results to HQ AFSC for review. This updated guide should reflect minimum manpower requirements to carry out a sustained support operation and should be annotated to show current and projected temporary civilian over-hire positions. Additionally, wherever practical, Air Force support functions should be completely or partially replaced by using local community services/facilities. The updated guide should also be annotated to reflect the current and projected conversions



from Air Force operations to community support. Following your review and recommendations, request that the updated manning guide be expeditiously forwarded to this Headquarters for final review.

4. Your responsiveness in support of the refugee program at Eglin AAF #2 is greatly appreciated.

  
WILLIAM J. G...  
Assistant Deputy Chief of Staff  
Programs and Resources

5 Atch

1. Composite Evaluation Team
2. Memorandum to Eglin AFB NATF/CC, 20 May 1975
3. Provisional Manning Guide, 18 May 1975
4. Organization Chart, Eglin Refugee Reception Center
5. Memorandum from Assistant Secretary of Defense (Comptroller) 20 May 1975 w/2 Encl

EGLIN AFB  
REFUGEE PROCESSING CENTER  
MANNING DOCUMENT  
30 JUNE 1975

(Based on a 60 hour week & supporting 6000 Refugees)

	AFSC	GRADE	NR	FUNCTION TOTAL
<u>COMMAND/1010</u>				
Commander	0026	COL	1	
Vice Commander	0026	COL	1	
Executive Off	7024	MAJ	1	
Admin Supt	70490	SMS	1	
Admin Supv	70270	TSG	1*	5
<u>INFORMATION/1040</u>				
Information Stf Off	7916	LTC	1	
Information Off	7924	CPT	1	
Information Supt	79191	SMS	1	
Information Spec	79150	SSC	2*	5
<u>OPERATIONS/13XX</u>				
Director of Ops/Chief Cmd Post	0036	LTC	1	
Graphic Spec	23151	SSC	1	
Air Oper Off	14XX	MAJ	4	
Air Oper Off	14XX	CPT	3	
Air Ops Supv	27170	TSG	2	
Air Ops Spec	27150	SSC	1	
Admin Spec	70250	SGT	4	16
<u>MEDICAL/5XXX</u>				
Health Svc Admin	9025	CPT	1	
Family Physician	9346	CPT	4	
Internist	9386	MAJ	1	
Veterinarian	9925	CPT	1	
Dental Officer	9826	CPT	1	
Aero Med Physician	9356	MAJ	1	
Clinical Nurse	9756	CPT	3	
Med Svc Supt	90292	SMS	1	
Med Svc Tech	90270	MSG	1	
Med Svc Tech	90270	TSG	1	

	AFSC	GRADE	NR	FUNCTION TOTAL
<u>MEDICAL/5XXX (Cont)</u>				
Med Svc Spec	90250	SSC	5	
Med Svc Spec	90250	SGT	4	
Oper Room Tech	90272	TSC	1	
Oper Room Spec	90252	SSC	1	
Radiology Tech	90370	TSC	1	
Med Lab Tech	90470	TSC	1	
Med Lab Spec	90450	SSC	1	
Med Admin Supt	90690	SMS	1	
Med Admin Spec	90650	SSC	1	
Med Admin Spec	90650	SGT	1	
Envir Health Tech	90770	TSC	1	
Envir Health Spec	90750	SSC	1	
Veterinary Tech	90870	MSC	1	
Veterinary Spec	90850	SGT	1	
Biomed Equip Maint Tech	40370	TSC	1	
Med Mat Supv	91570	TSC	1	
Med Mat Spec	91550	SSC	1	
Pharmacy Tech	90570	TSC	1	
Dental Spec	98150	SSC	1	
				41
<u>SAFETY/106X</u>				
Safety Tech	24170	TSC	1	
				1
<u>LOGISTICS/12XX</u>				
Logistics Stf Off	6616	LTC	1	
Supply Opns Off	6424	MAJ	1	
Inv Mgt Supv	64570	MSC	1	
Inv Mgt Supv	64570	TSC	1*	
Admin Spec	70250	SSC	1*	
				5
<u>VEHICLE OPERATIONS/4210</u>				
Motor Veh Mgt Off	6024	LT	1	
Veh Opns Tech	60370	TSC	2*	
Veh Operator/Disp	60350	SSC	8*	
Veh Operator/Disp	60350	CIV	8	
Veh Opns Supv	60370	MSC	1	
				20
<u>TRAFFIC MGT OFC/4220</u>				
Traffic Mgt Supv	60270	TSC	1	
Pax & Household Spec	60250	SSC	3*	
Pax & Household Spec	60250	SGT	2*	
				6

	AFSC	GRADE	NR	FUNCTION TOTAL
<u>NATF SUPPLY/41XX</u>				
Supply Serv Ops Off	6424	CPT/LT	1	
Inv Mgt Supv	64570	TSG	2	
Inv Mgt Spec	64550	SSC	1*	
Inv Mgt Spec	64550	SGT	3*	
Mat Fac Spec	64750	SSG	1*	
Mat Fac Spec	64750	SGT	2*	
				10
<u>REFUGEE STORE</u>				
Mat Fac Spec	64750	SSG	1	
Inv Mgt Spec	64550	CIV	2	
				3
<u>FUELS/4170</u>				
Fuels Spec	63150	SGT	2*	
				2
<u>SUPPORT COOR</u>				
Chief	0026	COL	1	
Vice Chief	0026	LTC	1	
Admin Supt	70490	CMS	1	
Admin Spec	70250	SSG	1*	
				4
<u>CIVIL ENGINEERING/44XX</u>				
CE Stf Off	5516	MAJ	1	
Structural Supt	55295	SMS	1	
Structural Supt	55295	CIV	1	
Steno Spec	70450	CIV	1	
Fire Prot Supv	57170	CIV	3	
Fire Prot Specl	57150	CIV	6	
Apr Fire Prot Specl	57130	CIV	4	
Prog Work Contr Tech	55570	CIV	5	
Apr Pave Maint Specl	55130	CIV	3	
Mat Fac Specl	64750	CIV	3	
Constr Eqp Opr	55151	CIV	3	
Paymt Maint Specl	55150	CIV	1	
Carpenter Specl	55250	CIV	3	
Apr Carpenter Specl	55230	CIV	2	
Plumbing Specl	55255	CIV	5	
Apr Plumbing Specl	55235	CIV	2	
Ref/AC Specl	54550	CIV	2	
Electrician	54250	CIV	4	
Envir Supp Techn	56370	CIV	1	
Envir Supp Specl	56350	CIV	4	
Veh Operator/Disp	60350	CIV	1	
Entomology Specl	56650	CIV	2	
				58

	AFSC	GRADE	NR	FUNCTION TOTAL
<u>SERVICES STAFF/46XX</u>				
Supply Svs Ops Off	61170	TSC	1	
Supply Svc Supv	61170	TSC	1	2
<u>BILLETING/465X</u>				
Admin Supv	70270	TSC	1	
Admin Supv	70270	SSG	1*	
Admin Spec	70250	SGT	2*	
Mat Fac Spec	64750	CIV	2	6
<u>HOSPITAL ESCORT/XXXX</u>				
Admin Spec	70250	SSG	2	2
<u>LINEN EXCHANGE/468X</u>				
Apr Supply Svc Spec	61130	AIC	3*	3
<u>FOOD SERVICE/4670</u>				
Food Service Supt	62290	SMS	1	
Food Service Supt	62290	SMS	1	
Food Svc Supv	62270	MSG	7	
Food Svc Supv	62270	TSC	17*	
Cook	62250	SSG	27*	
Cook	62250	SGT	20*	
App Cook	62230	AIC	36*	
App Cook (KP)	62230	CIV	84	
Inv Mgt Spec	64550	SSG	4*	
Admin Spec	70250	SGT	3*	
Cook	62250	CIV	20	220
<u>SECURITY POLICE/43XX</u>				
Security Police Off	8124	CPT	1	
Security Police Supt	81291	SMS	1	
Law Enforcement & Corrections Supv	81271	MSG	1	
Law Enforcement & Corrections Supv	81271	TSC	4	
Law Enforcement Spec	81250	SSG	16	
Law Enforcement Spec	81250	SGT	16	
App Law Enforcement Spec	81230	AIC	26	
Admin Spec	70250	SSG	1	66

	AFSC	GRADE	NR	FUNCTION TOTAL
<u>ADMINISTRATION/11XX</u>				
Admin Supt	70490	CMS	1	
Admin Supv	70270	TSG	1	
Admin Spec	70250	SSG	1*	
Admin Spec	70250	SGT	2*	
Apr Admin Spec	70230	A1C	3*	
				8
<u>PERSONNEL/16XX</u>				
Personnel Staff Off	7326	MAJ	1	
Pers Tech	73270	MSG	1	
Pers Tech	73270	TSG	1	
Pers Tech	73270	SSG	2*	
Pers Spec	73250	SGT	1*	
Admin Spec	70250	SSG	1*	
				7
<u>REFUGEE LIAISON OFFICE</u>				
<u>DIRECTOR'S OFC</u>				
Director	0026	COL	1	
Exec Off	7016	LTC	1	
Steno Spec	70450	CIV	1	
Dep Director	2116	LTC	1	
Exec Support Off	7024	MAJ	1	
Steno Spec	70450	CIV	1	
Interpreter	20350	CIV	2	
Admin Supt	70490	CMS	1	
				9
<u>REFUGEE AFFAIRS</u>				
Exec Supt Off	*XXXX	LTC	1	
Interpreter	20350	REF	(1)	
				1
<u>ADMIN OFC</u>				
Admin Supv	70270	MSG	1	
Admin Spec	70250	SSG	2*	
Admin Spec	70250	CIV	1	
				4

\*NOTE: Volunteers with SEA exp in PsyOps, Civic Affairs, COORDS, intel exp. etc. AFSC such as 14XX, 15XX, 22XX, 80XX or any experienced officer.

	AFSC	GRADE	NR	FUNCTION TOTAL
<u>CHAPLAIN/10 5X</u>				
Chaplain	8916	LTC	1	
Chap Mgt Tech	70170	TSG	2	
Chap Mgt Spec	70150	SGT	1	
Chap Mgt Spec	70150	AJC	1	
Chaplain	L8924	CIV	3	
Interpreter	L8924	REF	(1)	8

NOTE: The Chaplain Function can be augmented by Priests who are among the refugees. "L" Prefix denotes requirement for Linguist.

REFUGEE INFO, ORIENTATION, & EDUCATION

Info Tech	79170	MSG	1	
Education Off	7524	CIV	1	
Education Spec	75150	CIV	2	
Info Spec	79150	CIV	1	
Info Spec	79150	CIV	1	
Admin Spec	70250	CIV	1	
Interpreter	20350	CIV	1	
Info Spec	79150	CIV	1	9

REQUIREMENTS

Chief	XXXX	MAJ	1	1
-------	------	-----	---	---

REFUGEE SUPPORT COORDINATOR

Inv Mgt Supv	64570	MSG	1	
Inv Mgt Spec	64550	SSG	1*	2

VOLUNTEER COORD CENTER

Chief	XXXX	CPT	1	
Exec Supt Off	XXXX	LT	1*	2

VISITOR/VOLUNTEER/SPONSOR CONTROL

Admin Supv	70270	TSG	1	
Admin Spec	70250	SSG	1*	
Admin Spec	70250	SGT	4*	6

	AFSC	GRADE	NR	FUNCTION TOTAL
<u>VOL INTERPRETERS/CAMPWORKERS SEC</u>				
Spec Serv Supt	74191	CIV	1	
Admin Supv	70270	TSG	1	
Admin Supv	70270	CIV	1	
Admin Spec	70250	CIV	1	4
<u>CLOTHING ISSUE</u>				
Supply Serv Spec	XXXXX	A1C	6*	6
<u>ACCOUNTABILITY</u>				
Chief	14XX	LTC	1	
Admin Supv	70270	TSG	1	2
<u>REFUGEE ACCOUNTABILITY CENTER</u>				
Exec Supt Off	7024	MAJ	1	
Admin Supv	70270	MSG	1	2
<u>REFUGEE PROCESSING CENTER</u>				
Exec Supt Off	7024	CPT	1	
Exec Supt Off	7024	LT	1*	
Admin Supv	70270	TSG	1*	
Admin Spec	70250	SSG	1*	
Admin Spec	70250	SGT	3*	7
<u>REFUGEE DEPARTURE CENTER</u>				
Personnel Off	7324	CPT	1	
Personnel Off	7324	LT	1*	
Personnel Tech	73250	SSG	2*	
Apr Personnel Spec	73230	SGT	2*	
Apr Admin Spec	70230	CIV	4	
Escort	XXXXX	SSG	3*	13
<u>REFUGEE LOCATOR SEC</u>				
Exec Supt Off	7024	CPT	1*	
Admin Supv	70270	TSG	1	
Admin Spec	70250	SSG	3*	
Apr Admin Spec	70230	CIV	2	7



	AFSC	GRADE	NR	FUNCTION TOTAL
<u>REFUGEE OPNS</u>				
Chief	*XXXX	LTC	1	
Assistant Chief	*XX.X	MAJ	1	
Admin Supv	70270	TSC	1	
Ops Duty Off	XXXX	CPT	3	
Ops Duty NCO	XXXXX	TSC	3	
				9
<u>REFUGEE MORALE &amp; REC</u>				
Special Svc Supt	74191	CMS	1*	
Spec Svc Supv	74171	MSG	1	
Spec Svc Supv	74171	TSC	2*	
Recreation Spec	74151	CIV	6	
Recreation Spec	74151	CIV	5	
				15
<u>SENIOR REFUGEE LIAISON OFC</u>				
Chief	*XXXX	LTC	2	
Admin Supv	70270	MSG	1	
Interpreter	20350	REF	(1)	
				3
<u>SCHEDULING OFFICE</u>				
Scheduling Off	*XXXX	CPT	1	
				1
<u>SECTION REFUGEE LIAISON OFFICERS</u>				
Exec Supt Off	*XXXX	CPT	9	
Exec Supt Off	*XXXX	LT	27	
Admin Supv	XXXXX	TSG	27	
				63
<u>COMMUNICATIONS/38XX</u>				
Comm-Elec Off	3055	LT	1	
Grd Comm Maint Supt	30496	SMS	1	
Mat Control Spec	64590	SSG	1	
Tele Eqpt Inst/Repairman	36254	SSG	1	
Tele Eqpt Inst/Repairman	36254	SGT	3	
Tele Eqpt Inst & Repair Tech	36274	MSG	1	
Tele Swx Eqpt Repairman	36251	SSG	2	
Tele Swx Eqpt Repairman	36251	SGT	4	

\*NOTE: Volunteers with SEA exp in PsyOps, Civic Affairs, CORDS, intel exp. etc. AFSC such as 14XX, 15XX, 22XX, 80XX or any experienced officer.

	AFSC	GRADE	NR	FUNCTION TOTAL
<u>COMMUNICATIONS/38XX (Cont)</u>				
Radio Relay Eqpt Repairman	30450	SSC	7	
Radio Relay Eqpt Repairman	30450	SGT	9	
Radio Relay Eqpt Tech	30470	TSG	1	
Comm Center Supv	29170	TSG	1	
Comm Center Spec	29150	SSC	4	
Comm Center Spec	29150	SGT	8	
Comm Center Spec	29150	CIV	3	
Inside Plant Maint Supt	36390	SMS	1	
Elec Pwr Prod Tech	54370	TSG	1	
Elec Pwr Prod Spec	54350	SSG	5	
Elec Pwr Prod Spec	54350	SGT	3	
Tele Comm Sysm Cont Tech	30770	TSG	1	
Tele Comm Sysm Cont Spec	30750	SSG	3	
Tele Comm Sysm Cont Spec	30750	SGT	4	
Ref-A/C Spec	54550	SGT	3	
				68

AERIAL PORT OPS/4230

(Contingency only - To be used when C-130 scheduled)

MAINTENANCE

Acft Maint Stf Off	4096	LTC	1	
Acft Maint Off	4024	LT	1	
Acft Maint Tech	43171F	TSG	1	
Acft Maint Spec	43151F	SSG	1	
Acft Maint Spec	43151F	SGT	2	
Aero Grd Eq Rpmn	42153	SSG	1	
Acft Pneud Rep Tech	42172	TSG	1	
Acft Elect Rep Tech	43370	TSG	1	
Acft Maint Tech	43171F	MSG	1	
				10

OPERATIONS

Air Ops Gen	1495Z	MAJ	1	
Air Ops Spec	27150	SSG	1	
				2

AIR CARGO

Air Trans Supv	60571	MSG	1	
Air Trans Supv	60571	TSG	1	
Air Cargo Spec	60551	SSG	2	
Air Cargo Spec	60551	SGT	2	
				6

REFUGEE

	30 JUN	O	A	C	T
COMMAND	5	3	2	0	5
Information	5	2	3	0	5
Ops/Command Post	16	8	8	0	16
Medical	41	11	30	0	41
Safety	1	0	1	0	1
Logistics	5	2	3	0	5
Vehicle Ops	20	1	11	8	20
TMO	6	0	6	0	6
NATF Supply	10	1	9	0	10
Refugee Store	3	0	1	2	3
Fuels	2	0	2	0	2
Support Coordinator	4	2	2	0	4
Civil Engineering	58	1	1	56	58
Services Staff	2	1	1	0	2
Billeting	6	0	4	2	6
Hospital Escort	2	0	2	0	2
Linen Exchange	3	0	3	0	3
Food Service	220	0	116	104	220
Security Police	66	1	65	0	66
Administration	8	0	8	0	8
Personnel	7	1	6	0	7
REFUGEE LIAISON (RLO Sub-Totals)	(174)	(59)	(79)	(36)	(174)
Director	9	4	1	4	9
Refugee Affairs	1	1	0	0	1
Administration	4	0	3	1	4
Chaplain	8	1	4	3	8
Refugee Info, Orient & Ed	9	0	1	8	9
Requirements	1	1	0	0	1
Refugee Support Coord	2	0	2	0	2
Vol Coord Center	2	1	1	0	2
Visitor/Vol/Spon Cntrl	6	0	6	0	6
Vol Interp/Campworkers					
Sec	4	0	1	3	4
Clothing Issue	6	0	6	0	6
Accountability	2	1	1	0	2
Refugee Acc Center	2	1	1	0	2
Refugee Processing Cen	7	2	5	0	7
Refugee Dept Cen	13	2	7	4	13
Refugee Locator Sec	7	1	4	2	7
Refugee Operations	9	5	4	0	9
Refugee Morale & Rec	15	0	4	11	15
Senior Refugee Liaison Off	3	2	1	0	3
Scheduling Off	1	1	0	0	1
Sect Refugee La Off	63	36	27	0	63
Communications	68	1	64	3	68
TOTALS	732	94	427	211	732

Does not include Aerial Port Contingency

TAB II

Cost Document



**DEPARTMENT OF THE AIR FORCE**  
HEADQUARTERS ARMAMENT DEVELOPMENT AND TEST CENTER (AFSC)  
EGLIN AIR FORCE BASE, FLORIDA 32542



TO: ACBS (New Arrivals)  
FROM: Monthly List of Costs for Indo-China Orphans/Refugees/Evacuees

hq AFSC/ACXA

In accordance with your AFSC/ACFA message 021855Z May 75, the attached list of costs is submitted from Eglin AFB (ADSN 527900) for the period 31 May 1975 through 30 Jun 1975.

/s/ D. E. Barber  
D. E. BARBER, Major, USAF  
Comptroller New Arrivals Cost Officer

1 Atch  
List of Costs

A TRUE COPY

C O P Y

1.	575 3600	295 4721	PE 65807F	P690999	5527900
A.	<u>LEIC</u>	Cumulative Total	Prior Billing		Current Billing
	140	\$ 13,497.00	-0-		\$ 13,497.00
	391	87,560.43	\$ 76,832.45		10,727.98
	392	155,096.95	34,424.23		120,672.72
	408/409	8,295.74	1,275.90		7,019.84
	432	17,913.20	5,491.00		12,422.20
	46X	492.85	-0-		492.85
	472	5,658.65	1,835.73		3,824.90
	473	3,994.18	2,571.20		1,422.98
	480	4,413.11	4,415.11		-0-
	492	60,177.31	25,751.80		34,425.51
	521	1,745.00	1,640.00		105.00
	529	77,421.00	73,630.00		3,791.00
	569	5,658.05	462.91		5,175.14
	570	11,180.10	7,087.00		4,093.10
	592	348,737.09	143,934.49		204,802.60
	593	8,173.34	1,926.52		6,246.82
	601	868.10	817.70		50.40
	607	374,698.54	175,322.83		199,375.51
	509	1,337,204.02	1,074,342.38		262,861.64
	619	247,429.21	185,894.58		61,534.63
	628	435,757.57	412,081.66		23,675.91
	716	<u>14,868.21</u>	<u>15,529.42</u>		<u>1,538.79</u>
	Total	\$3,220,819.43	\$2,243,262.91		\$977,556.52

B. NARRATIVE JUSTIFICATION

- 501 - Overtime expended in direct support of the operation.
- 502 - Overhire of civilian personnel in direct support of this operation.
- 40X - For vicinity travel and for the special tour of duty of reservist.
- 352 - Total accruals for rental of passenger vehicles in support of the operation.
- 472 - Computer time required for implementing and reporting refugee status on CDC 6000 computer per requirement of Department of State.
- 473 - Copier Rental.
- 480 - Electricity charges.
- 492 - Additional leased communications lines.
- 521 - Repair septic tank.
- 529 - Chain link fence - DE holding area.
- 569 - Repair typewriters, compressors, adding machines, sewing machines, etc.
- 570 - For relocation of BISS test from the site of the Refugee Relocation Center.
- 595 - For laundry and dry cleaning of organization items, i.e., sheets, pillowcases, blankets, cook whites, and all other government owned property.
- 601 - For Aviation POL for locally assigned aircraft involved in support of the operation.
- 607 - For subsistence costs for refugees.
- 609 - Supplies for maintenance, construction, housekeeping, billeting, food preparation, recreation, hygiene, and administrative support for the operation.
- 619 - Locally procured supplies to support the operation.
- 628 - For tents and repair kits, field ranges, movie projectors, televisions, recreational equipment, and administrative office equipment required to support the operation.
- 716 - For the use of Civil Engineering vehicles in direct support of operation. This includes the cost of fuels, lubricants, and maintenance of the vehicles.

2. 57.53400	305	4721	PL81211F	5527900		
A. <u>ELIC</u>	Cumulative Total		Prior Billing	Current Billing		
591	\$	56.78	\$	37.26	\$	19.52
592		18,365.58		2,162.56		16,203.02
593		1,380.57		678.15		702.42
599		54,924.03		21,407.92		33,516.11
604		-0-		21,228.81		(21,228.81)
609		-0-		2,178.11		( 2,178.11)
624		-0-		1,920.00		( 1,920.00)
628		<u>-0-</u>		<u>894.00</u>		<u>( 894.00)</u>
<b>Total</b>		<b>\$74,726.96</b>		<b>\$50,506.81</b>		<b>\$24,220.15</b>



**B. NARRATIVE JUSTIFICATION**

391 - For overtime expended by civilians assigned to the hospital in direct support of the operation.

392 - For hospital overhires in direct support of the operation.

593 - For laundry and dry cleaning of hospital lines and whites used in direct support of the operation.

599 - Costs of inpatient and outpatient care at standard rates.

604, 609, 624, & 628 - credit due. Charges being covered by standard rate BEIC 599.

3. 5753600            295            47R1            PE62602F            P660999            S527900

A. <u>FEIC</u>	<u>CUM TOTAL</u>	<u>PRIOR BILLING</u>	<u>CURRENT BILLING</u>
391	\$178.60	\$178.60	-0-

4. NON-ADD ITEMS	<u>CUM TOTAL</u>
1. Reg Civ Pay	\$295,250.98
2. Mil Pay	\$920,081.97

I certify that the above costs have been incurred in support of the Indo-China Orphans/Refugees/Evacuees Evacuation Program.

I further certify that a previous billing has not been submitted for these costs.

/s/ A. B. Restivo  
A. B. RESTIVO, DAFC  
Accounting & Finance Officer  
Eglin AFB FL 3252900

A TRUE COPY

C O P Y