

TERRAIN PHOTOGRAPHS
AMERICAN WORLD WAR BATTLEFIELDS
IN EUROPE

30TH DIVISION
SOMME OFFENSIVE
OCTOBER 3-22, 1918

PREPARED BY
THE AMERICAN BATTLE MONUMENTS
COMMISSION

THE COMMAND AND STAFF COLLEGE

LIBRARY



Class Symbol M. 9403-II6-C.73-G3-C30

Accession Number.....N69596

PREFACE

THIS album is part of a collection of photographs of the various battlefields in Europe upon which the Armed Forces of the United States were actively engaged during World War I.

These terrain photographs were taken and prepared by the American Battle Monuments Commission, as provided in the act of Congress of March 4, 1923, to complete the historical record of the operations of the American units. The series comprises 69 albums containing 1,396 photographs.

The contents of these albums will be of particular value when studied in conjunction with the Summaries of Operations, prepared by the American Battle Monuments Commission, which relate in detail the combat services of each American division.

On the page preceding the photographs will be found a small-scale key map showing the general operation of which this divisional operation was a part. In the pocket inside the back cover will be found a reprint of a 1:20,000 map, of the type used during the war, showing the operation covered by the photographs in this

album. On this index map have been indicated the position of the camera and the direction in which it was sighted in taking each photograph.

On the page opposite each photograph is a section of the 1:20,000 map of the terrain in the vicinity of that pertaining to the photograph. The white wedge-shaped portion of the map indicates the sector of terrain which actually appears in the picture. The plotted position of the camera and the axis of the picture are shown in blue, the length of the blue line approximately indicating the depth of the view. The circled number corresponds to the number of the photograph, of which the numerals before the dash indicate the division and the numerals after the dash indicate the serial number of the photograph in this division.

Various topographical features visible in the photographs have been indicated by name to facilitate orientation.

Complete sets of these albums have been deposited with the National Archives, the Library of Congress, the Historical Division of the War Department General Staff, and the Command and Staff College.

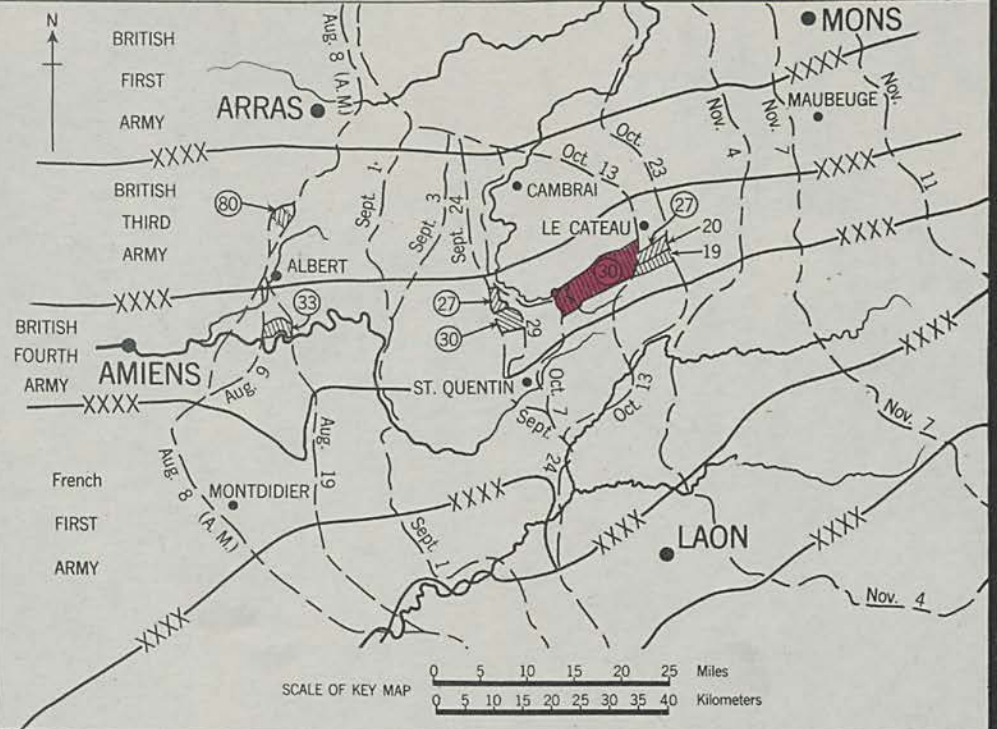
AMERICAN BATTLE MONUMENTS COMMISSION,

John J. Pershing
CHAIRMAN

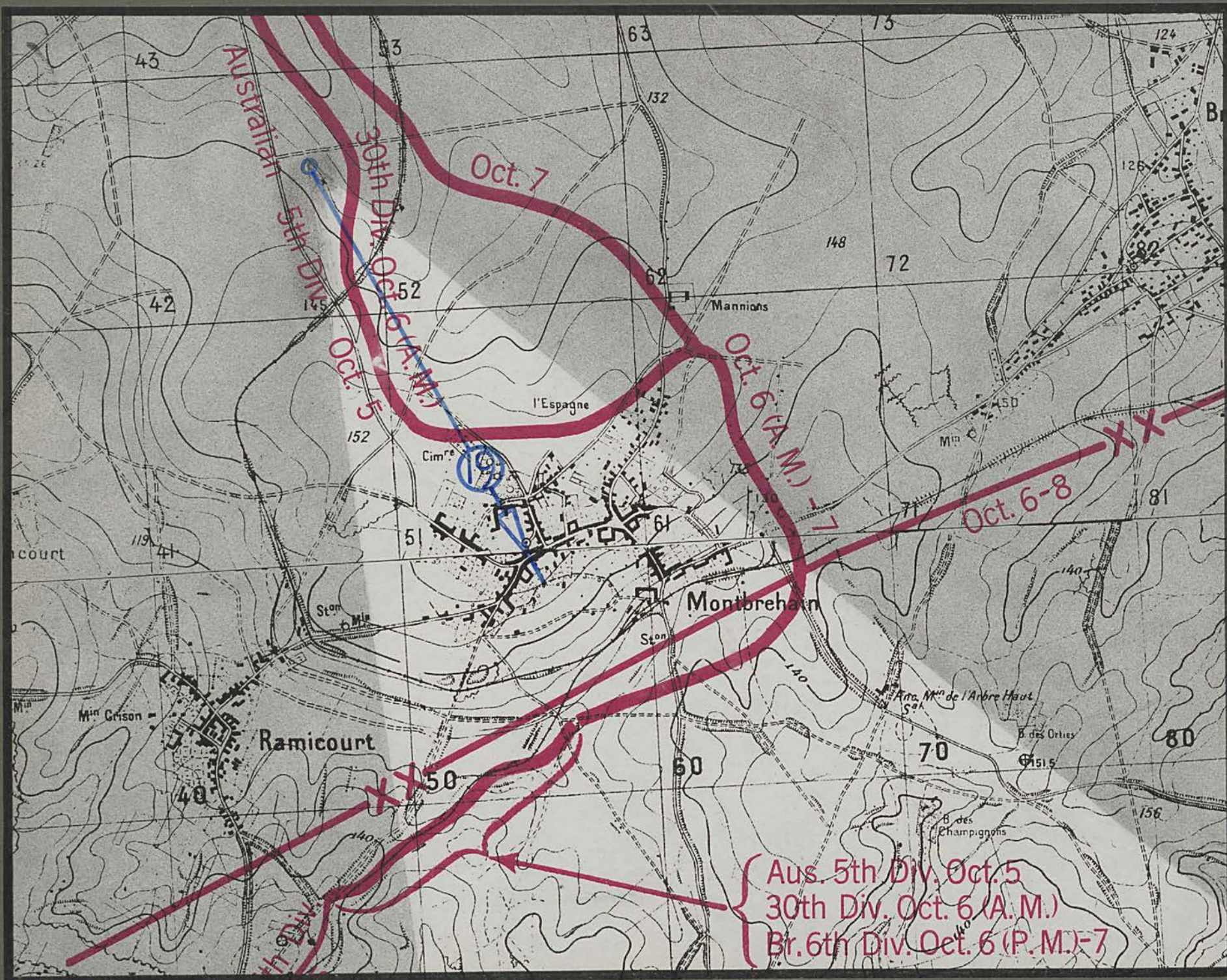
NOV 22 1918

30TH DIVISION
SOMME OFFENSIVE
OCTOBER 3-22, 1918
(MAP NO. 1)

KEY MAP
SOMME OFFENSIVE
 AUGUST 8 - NOVEMBER 11, 1918



Area Covered by Operation Shown on Summary Map
 Ground Gained by British and French Divisions
 Front Line
 Ground Gained by American Divisions
30 Circled numeral indicates American Division

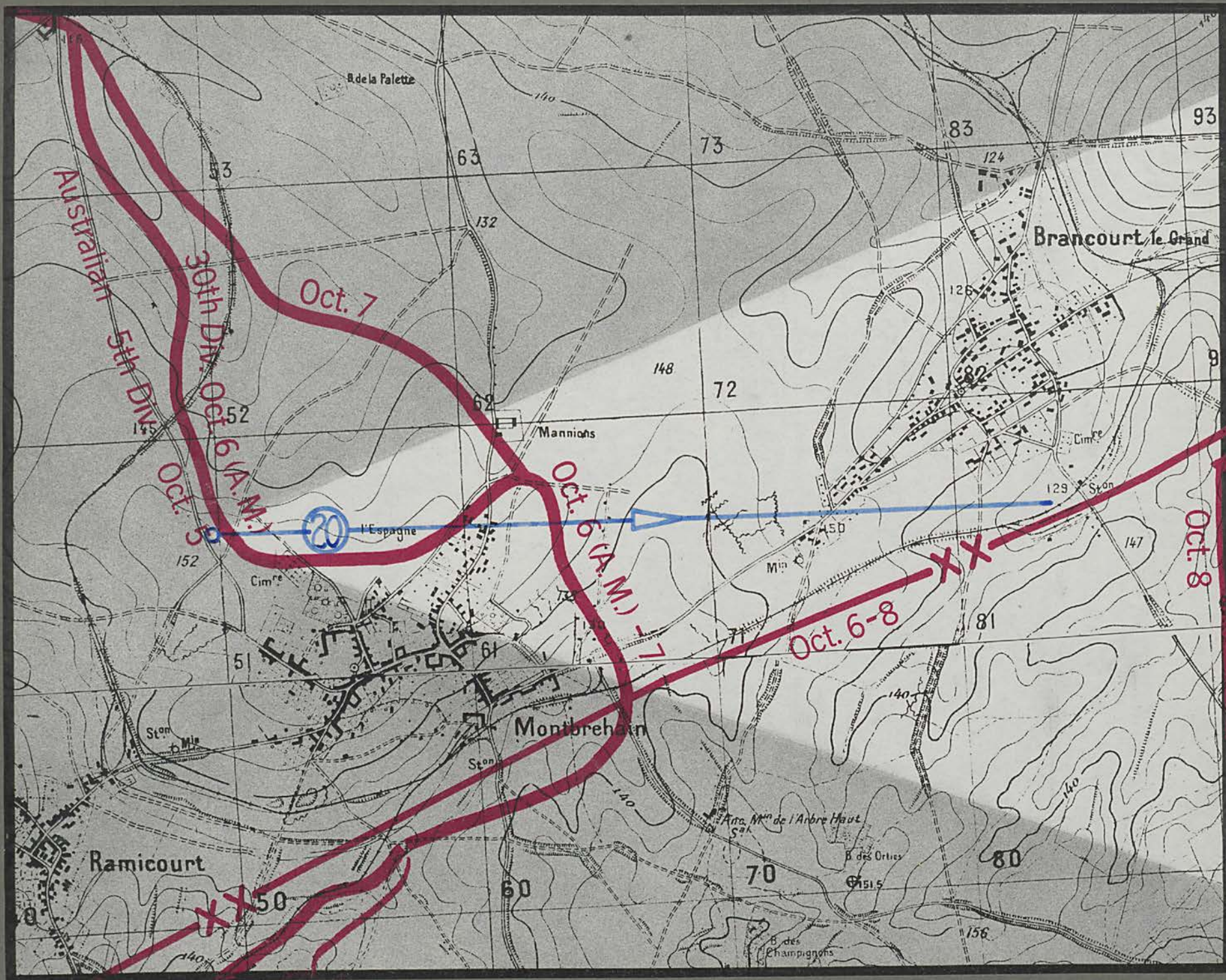




Montbrchain

Montbrchain - Geneve road

R.R.

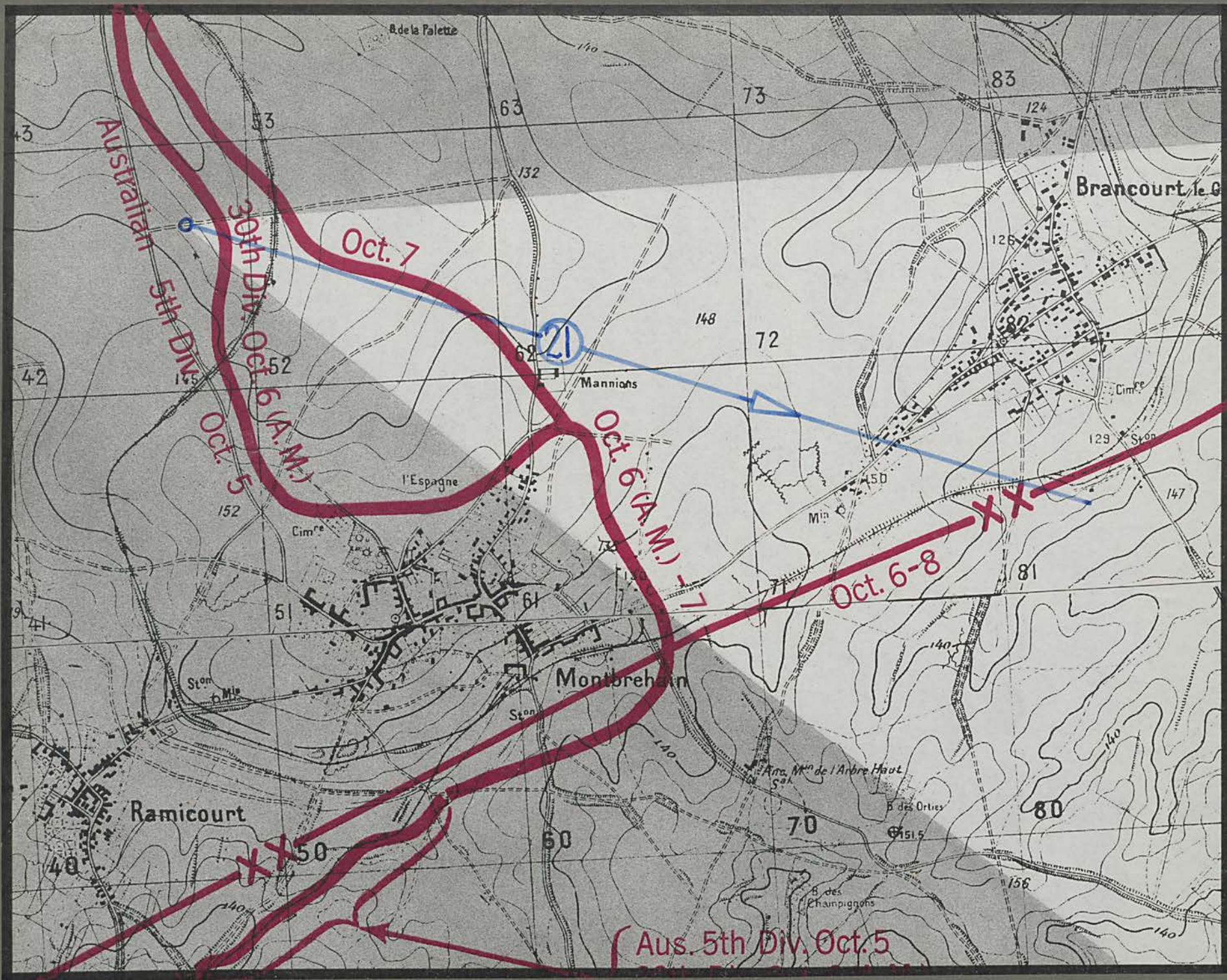


Mannions

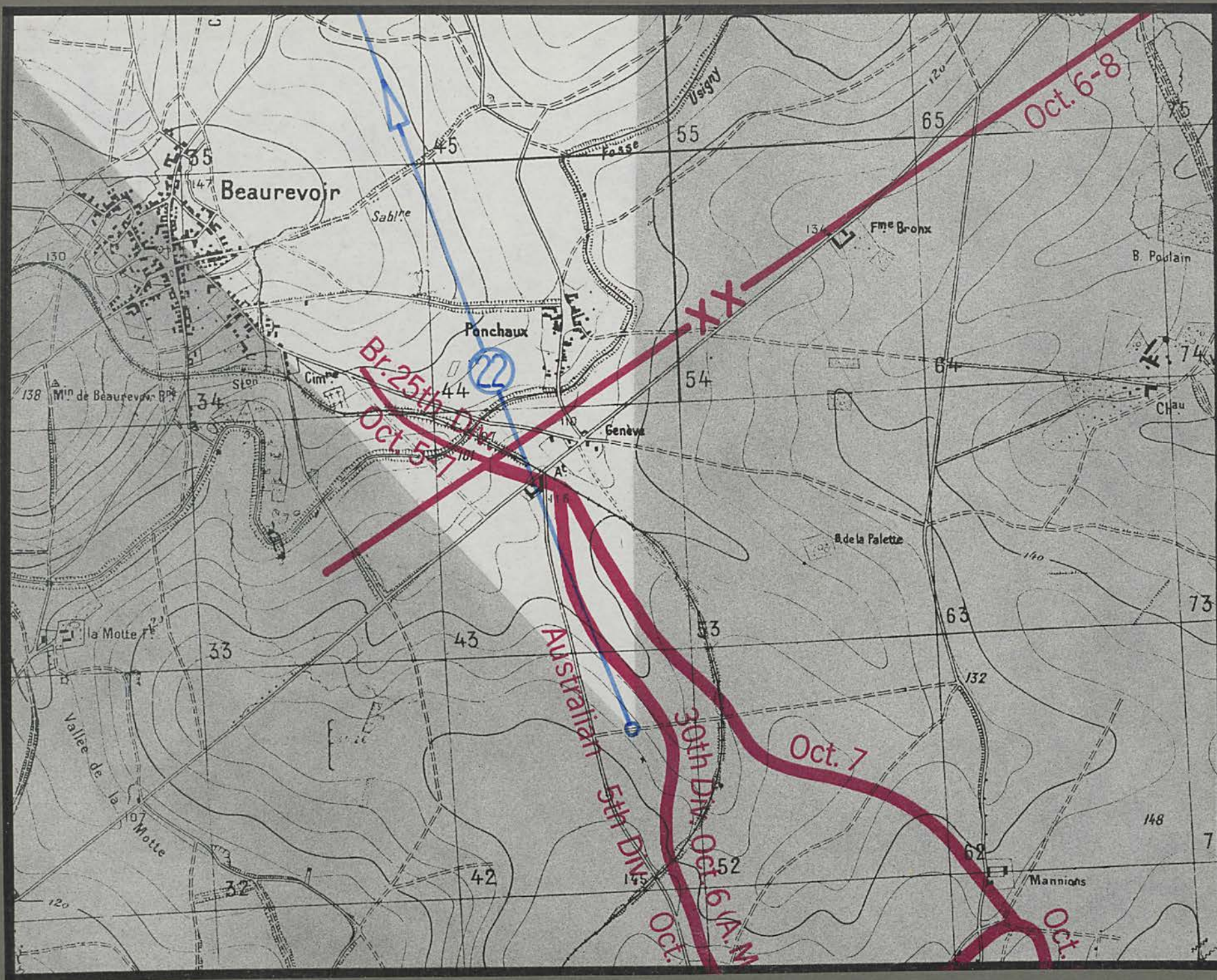
Brancourt-le-Grand

Montbrehain









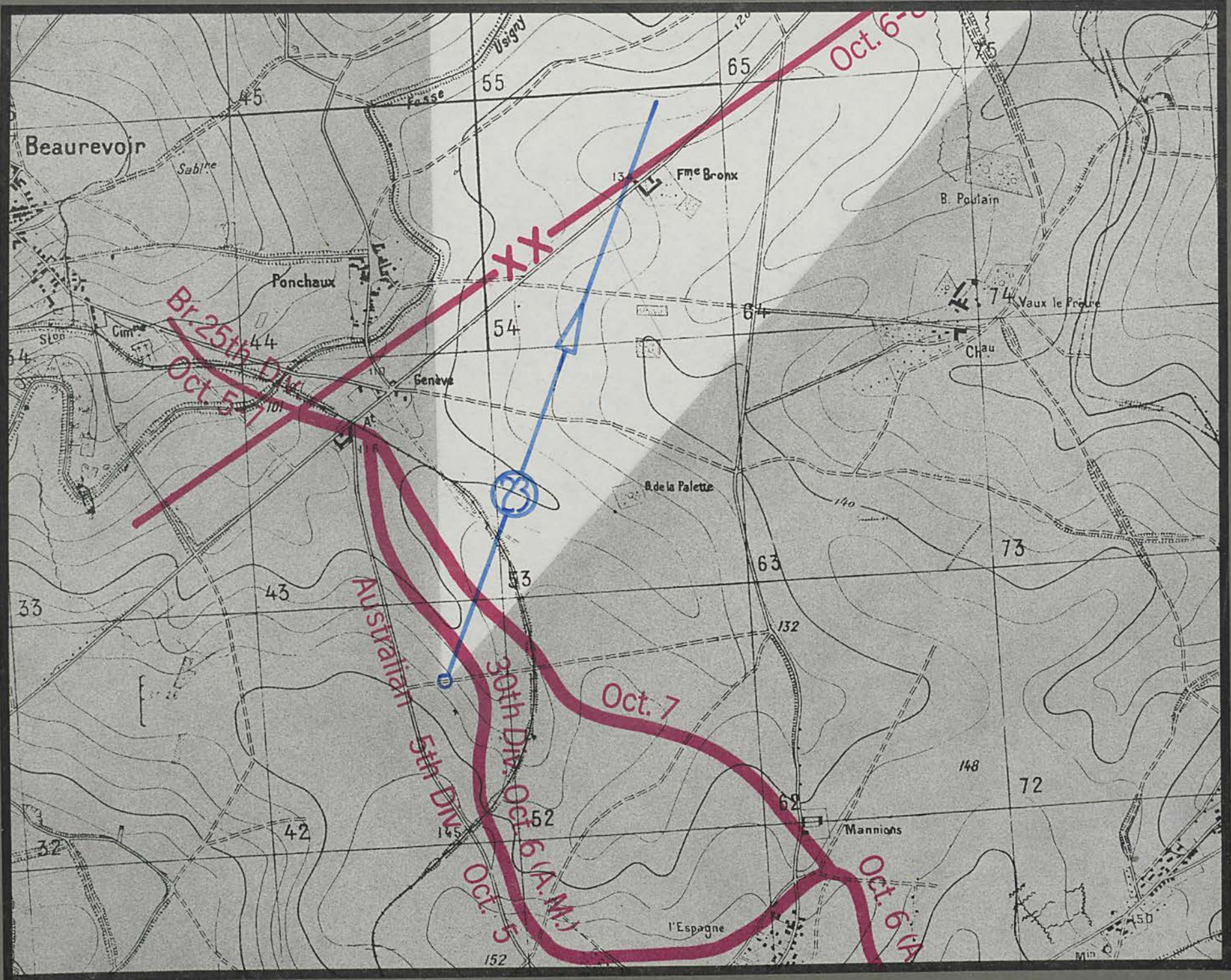
Beaurevoir

Road junction 4.4.3.7

la Sablonniere

Ponchaux

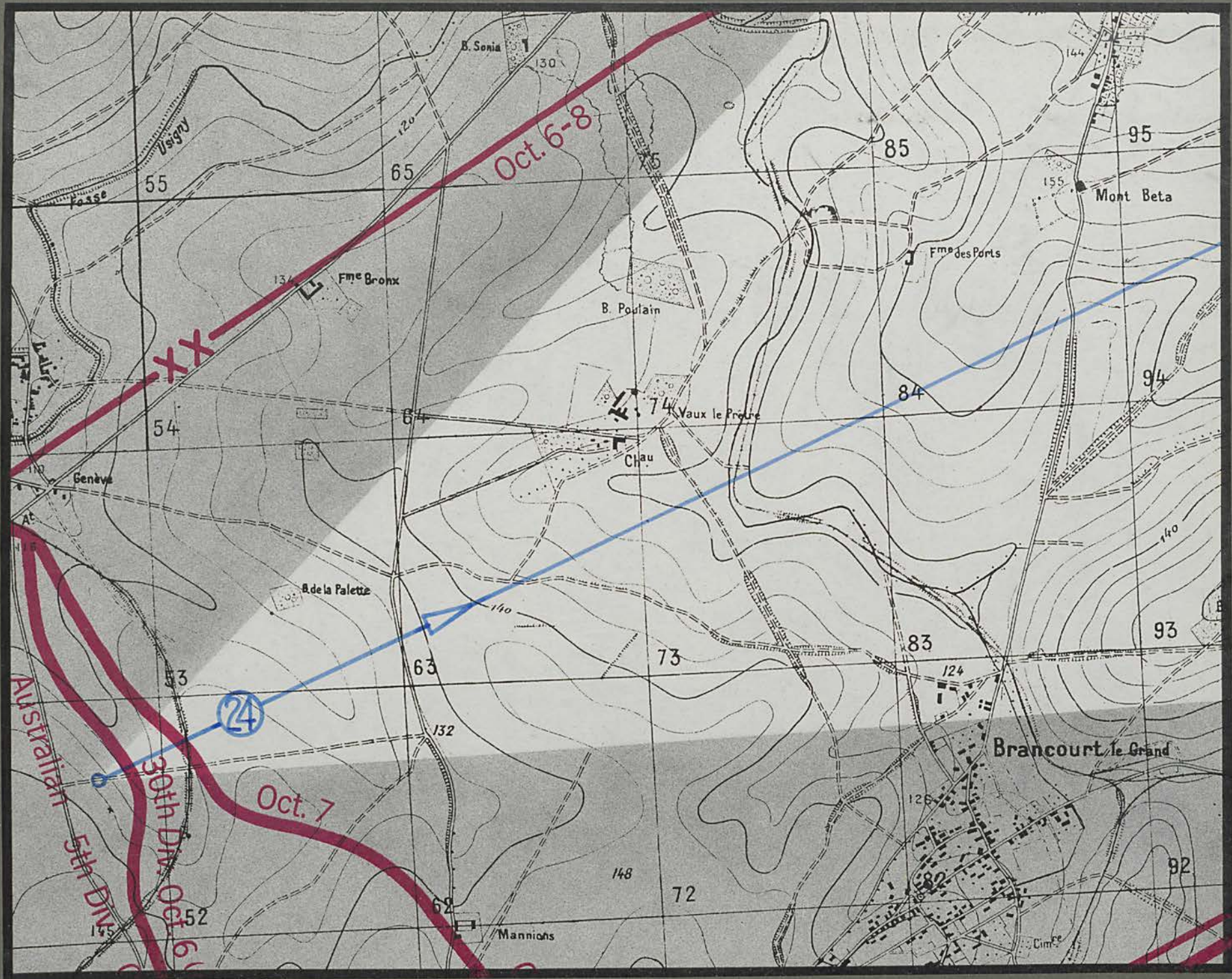




Pte Folie Fme

Bronx Fme





B. de la Palette

Premont

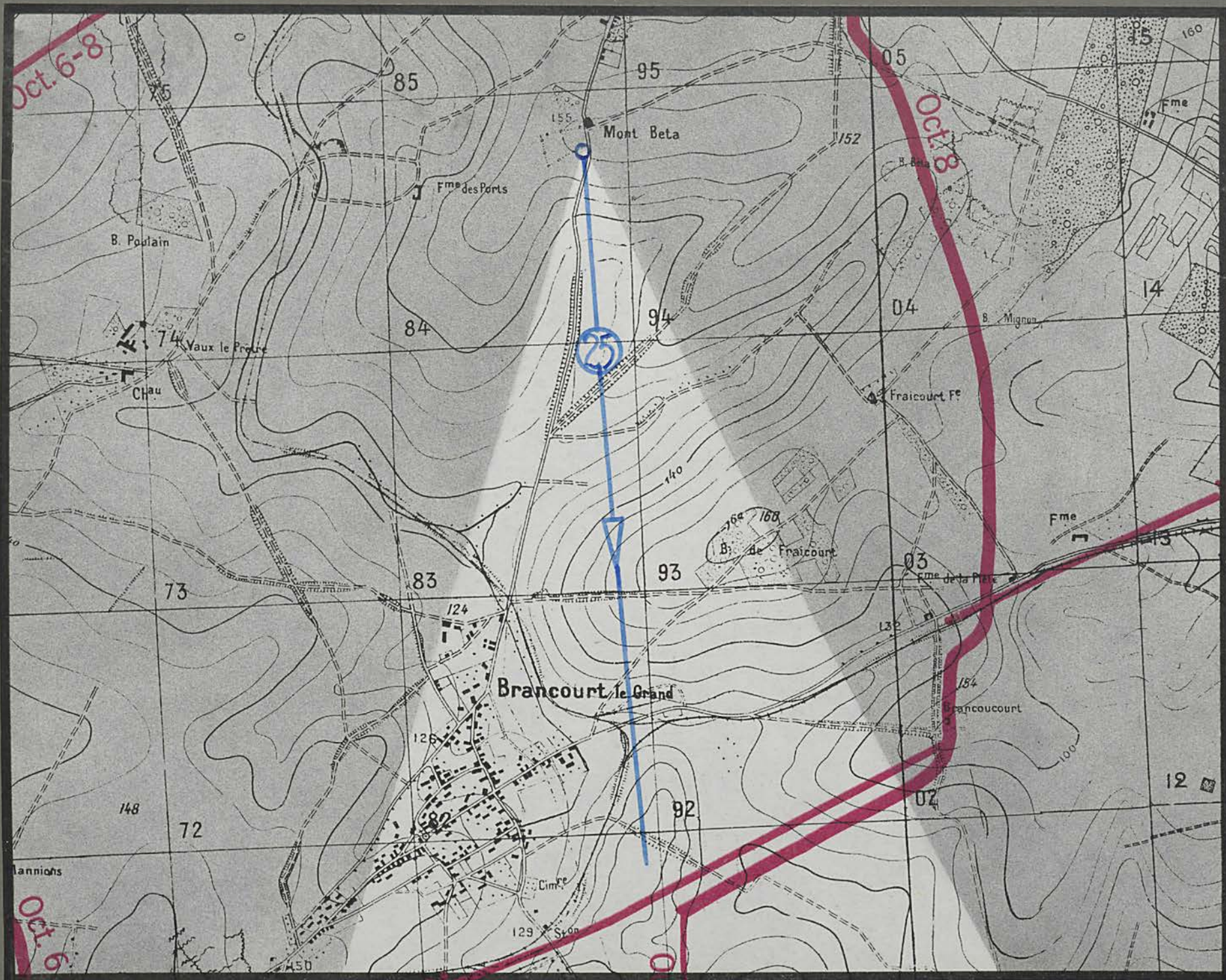
Chau. Vaux le Prêtre

R.R.

Fraicourt Fe

Bois de Fraicourt



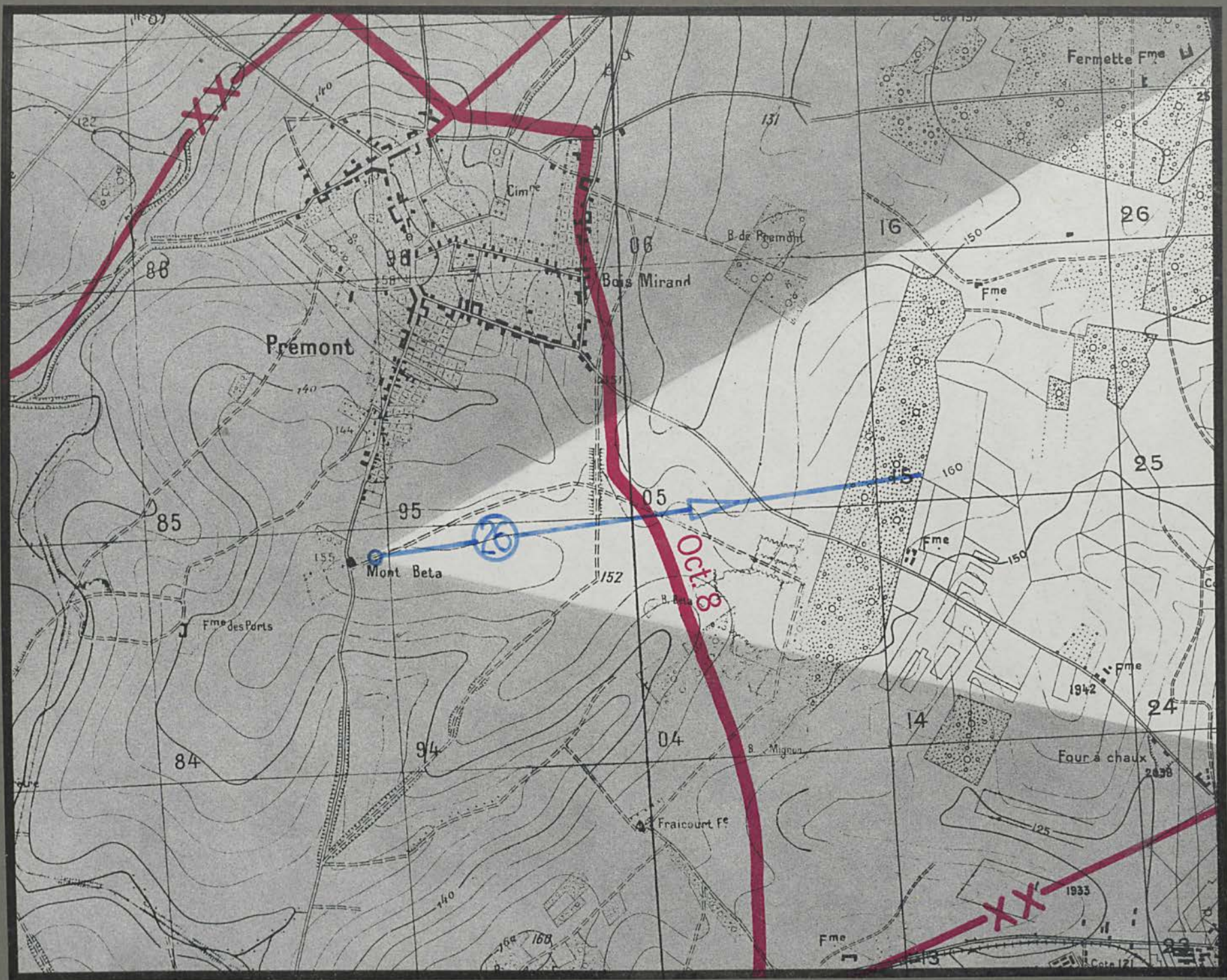




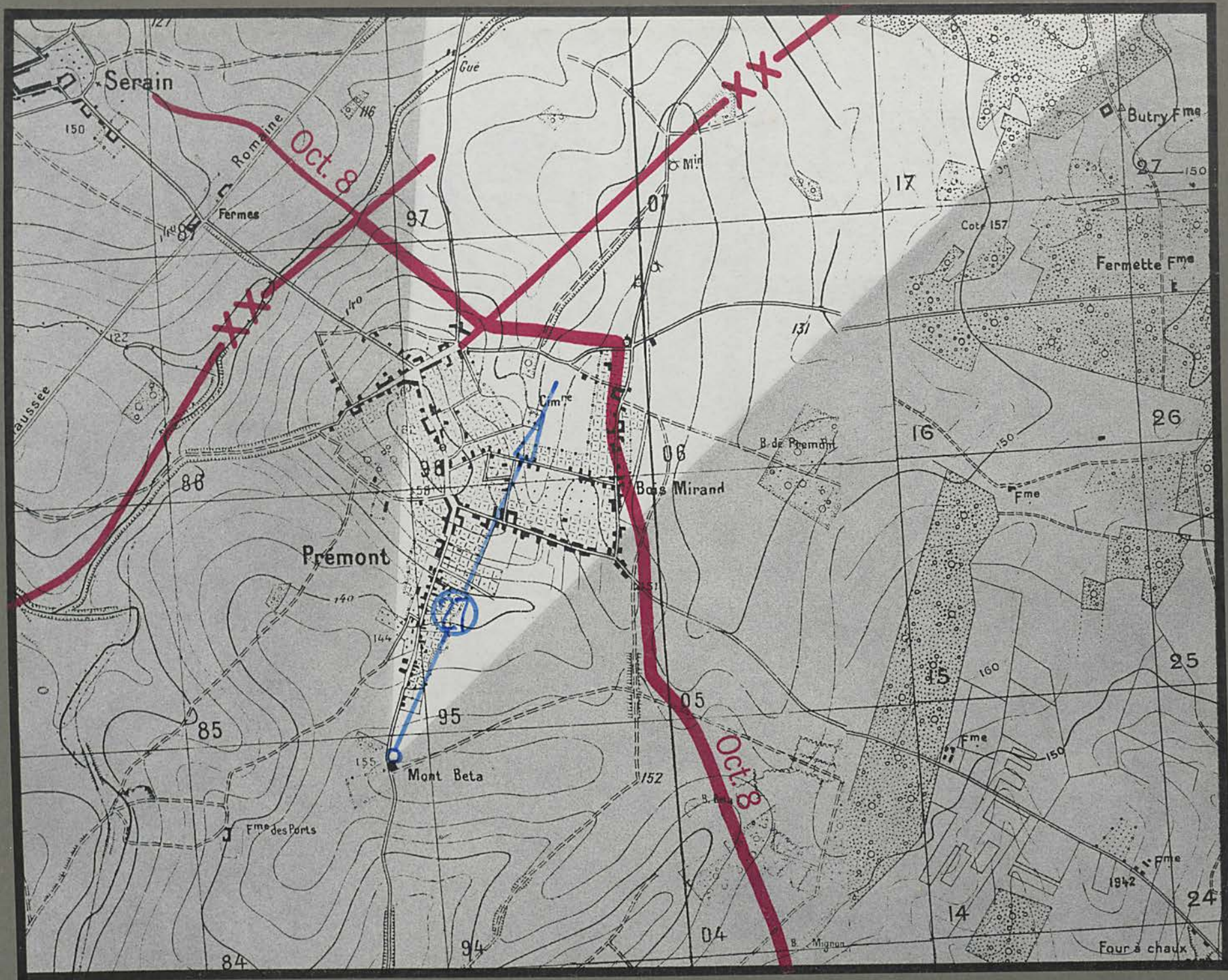
Bois de Fraicourt

Prémont-Brancourt road

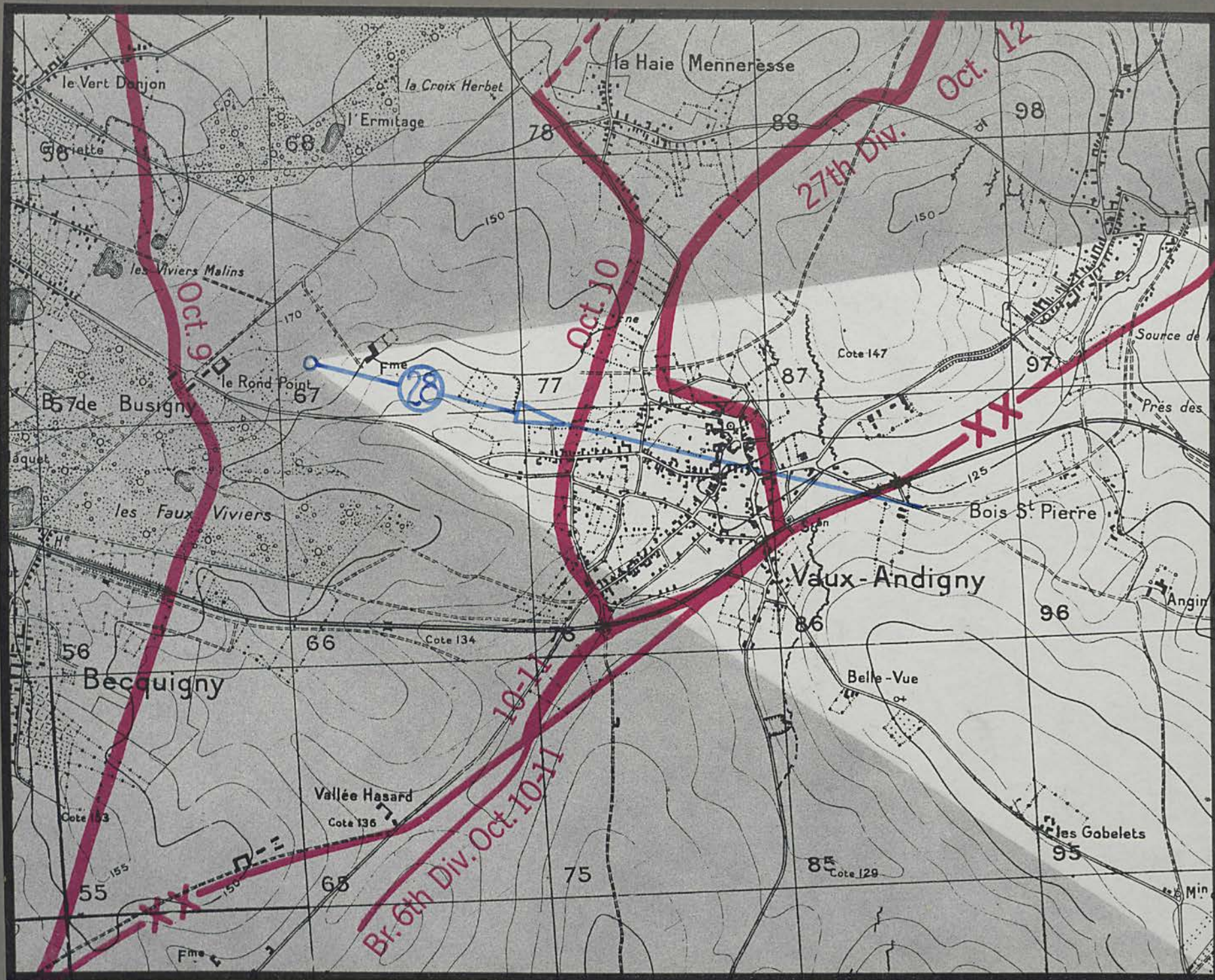
Brancourt-le-Grand







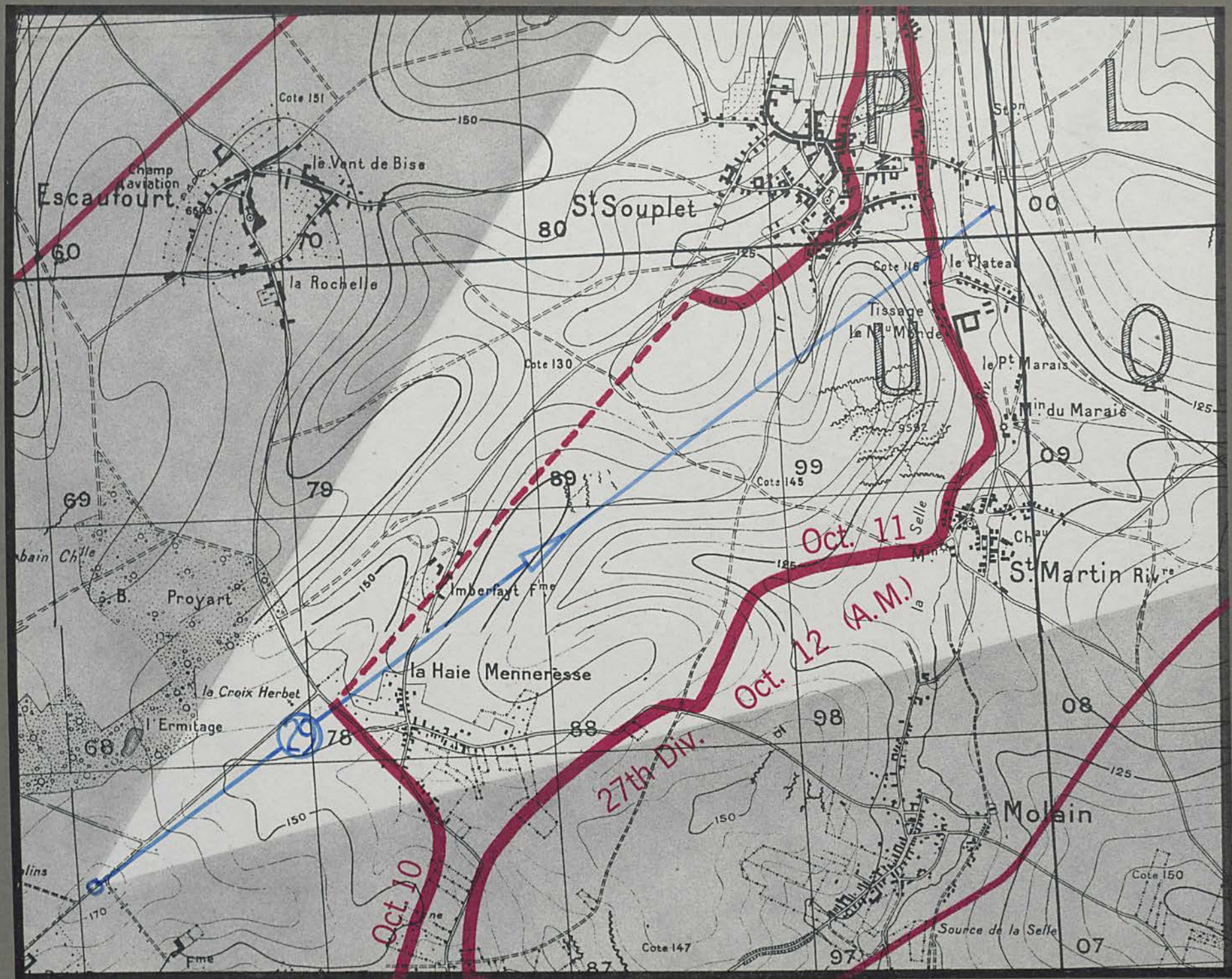




96.4-67.3

Vaux-Andigny



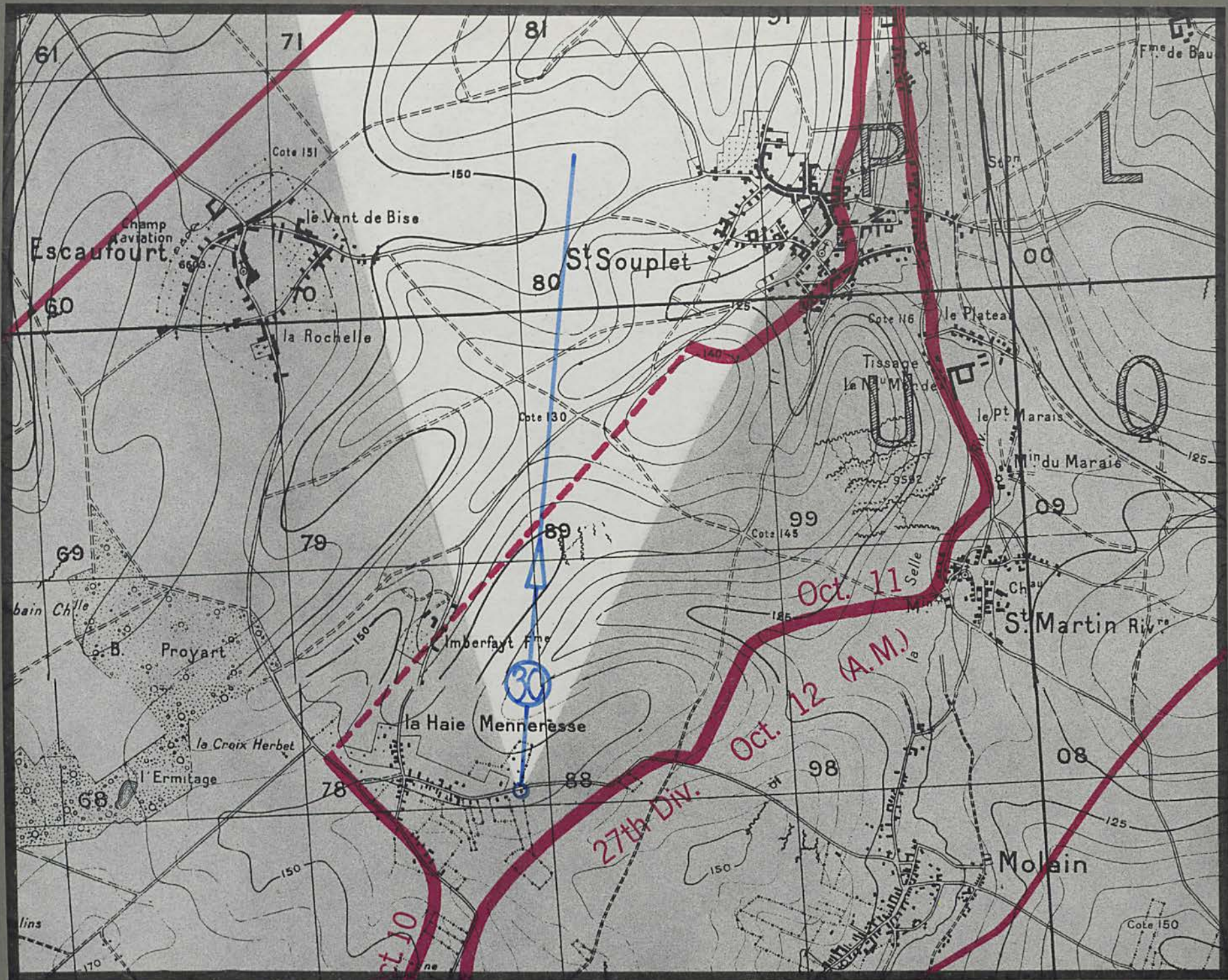


road to Busigny

St Souplet

la Haie Menneresse

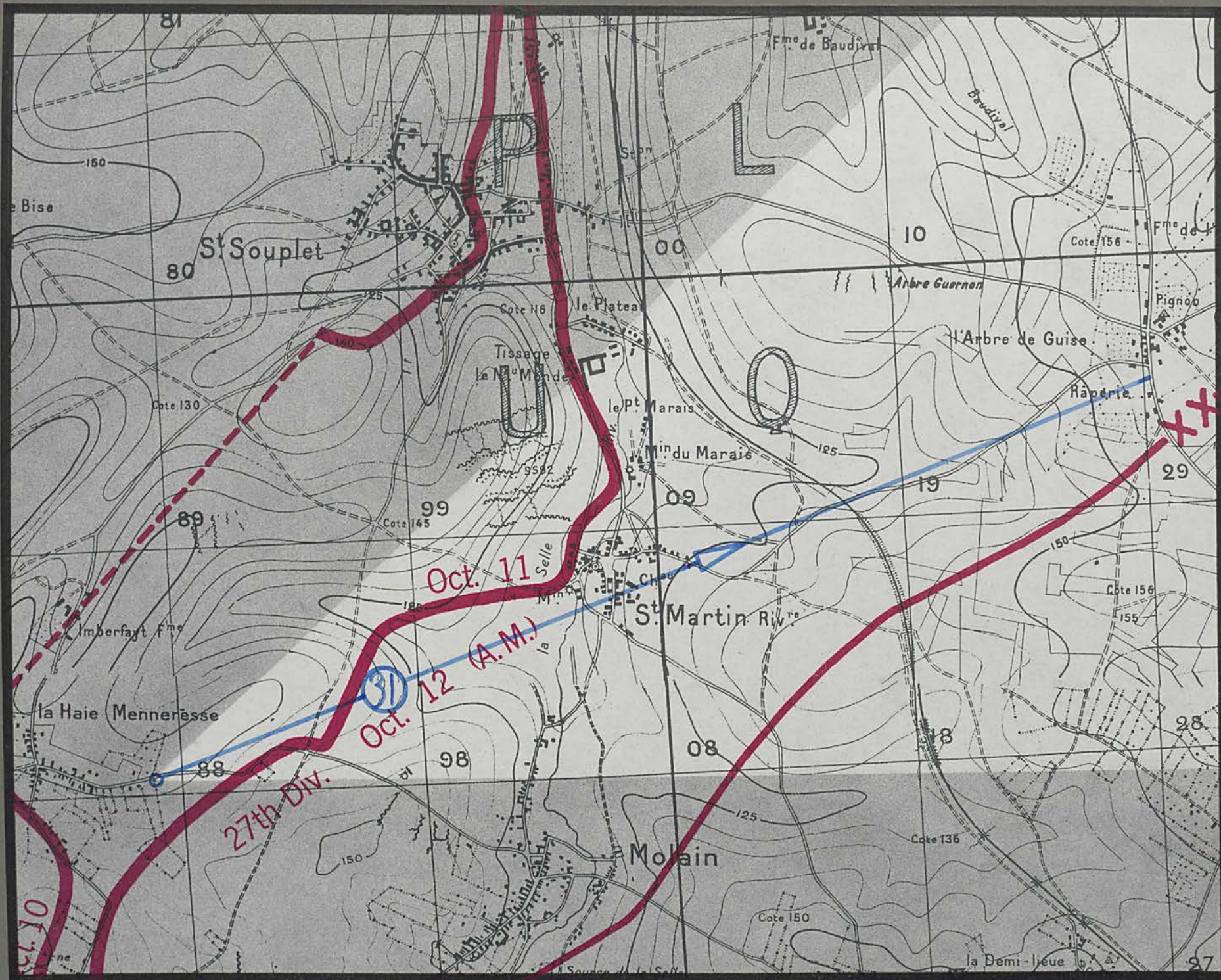




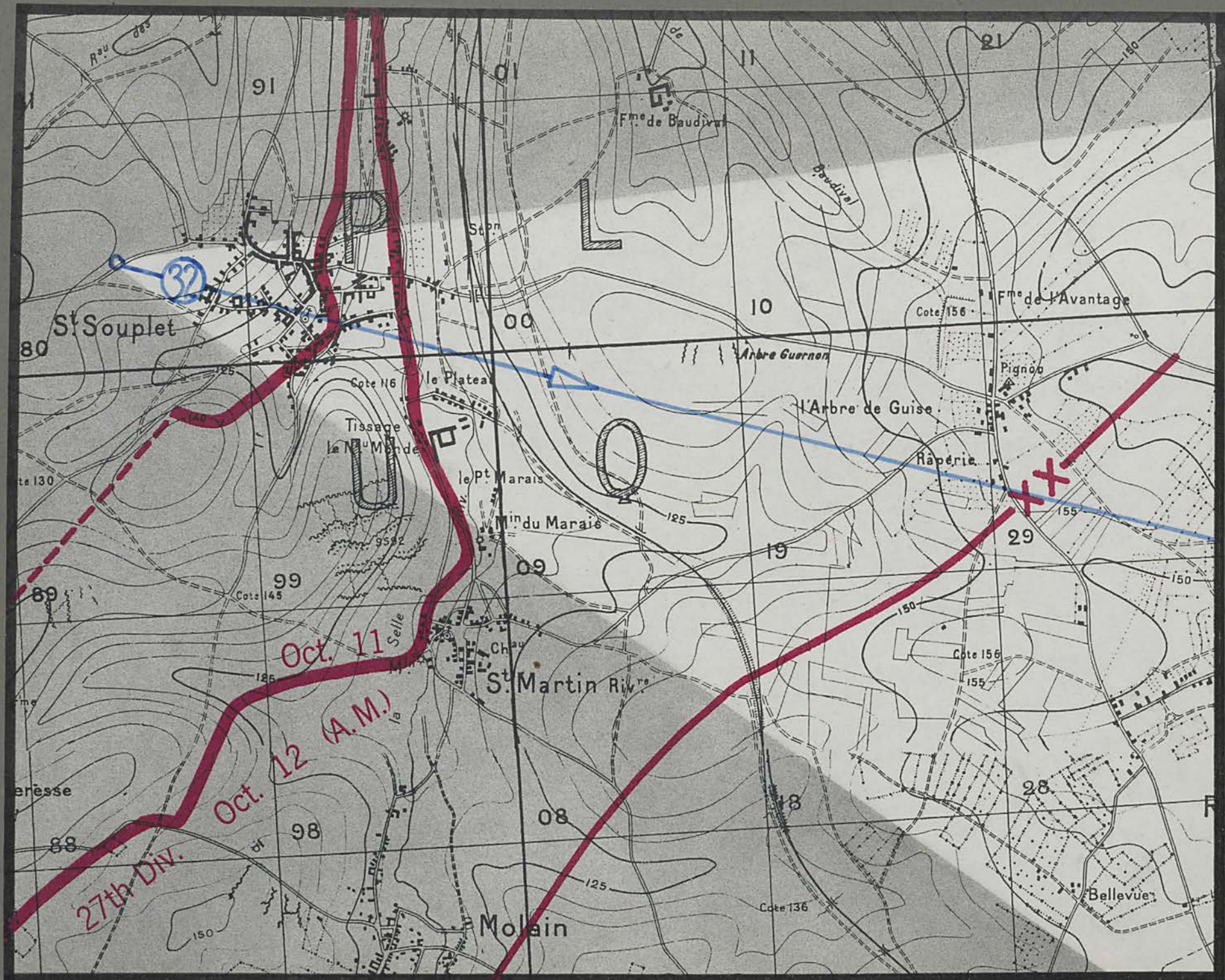
Escaufourt

St Souplet









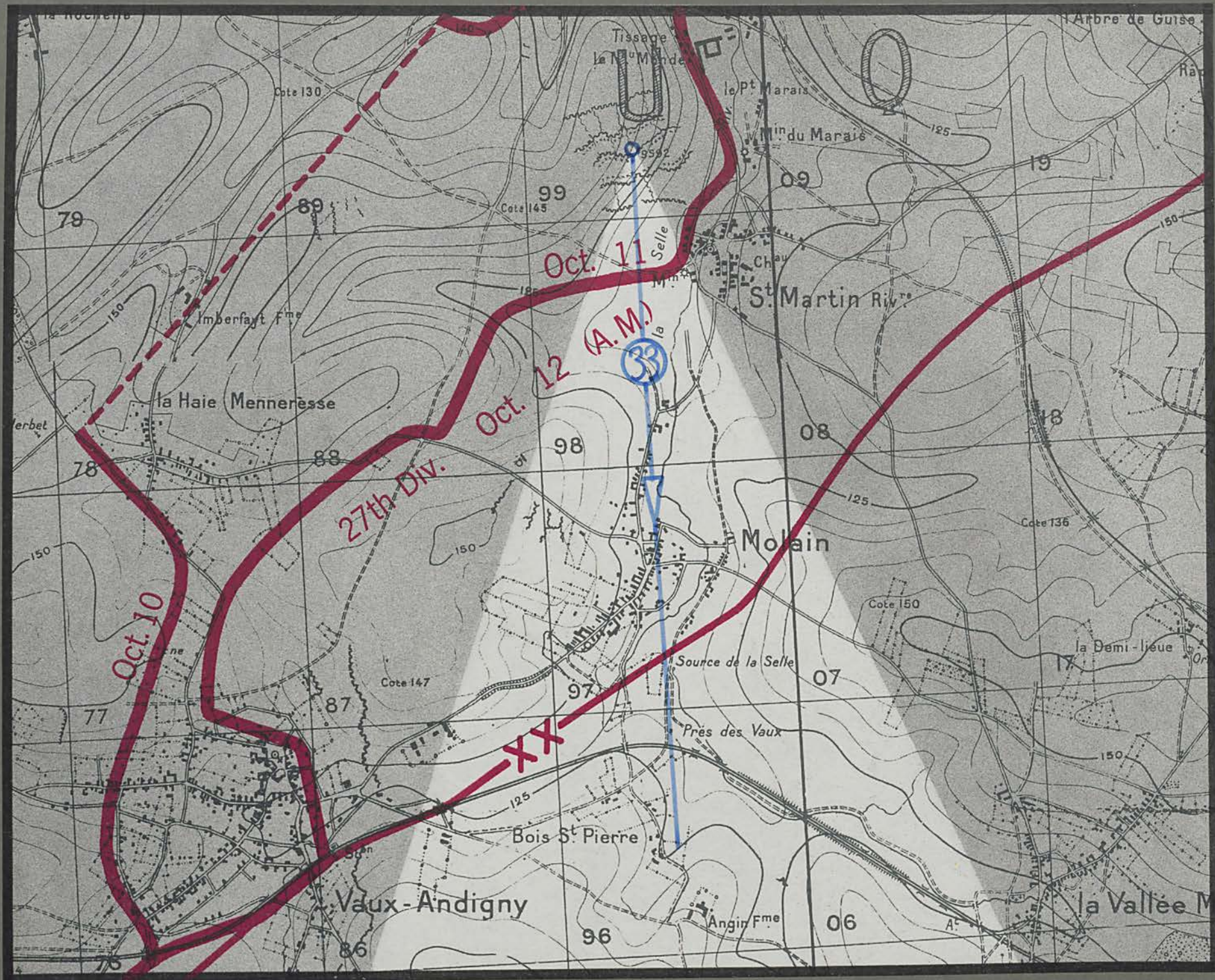
St Souplet-Escaufourt road

Arbre Guernon

Arbre de Guise

St. Souplet



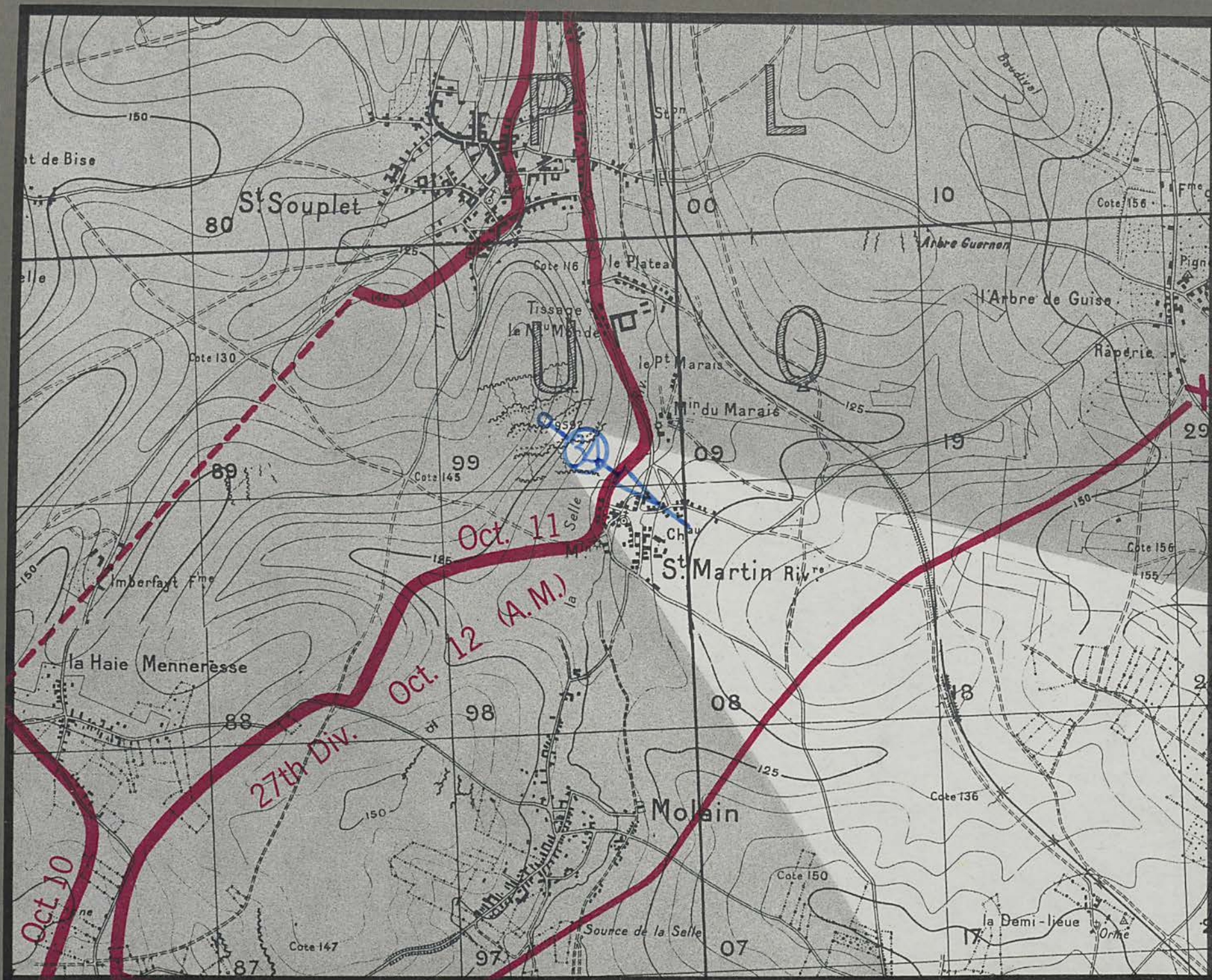


St Martin Riviere

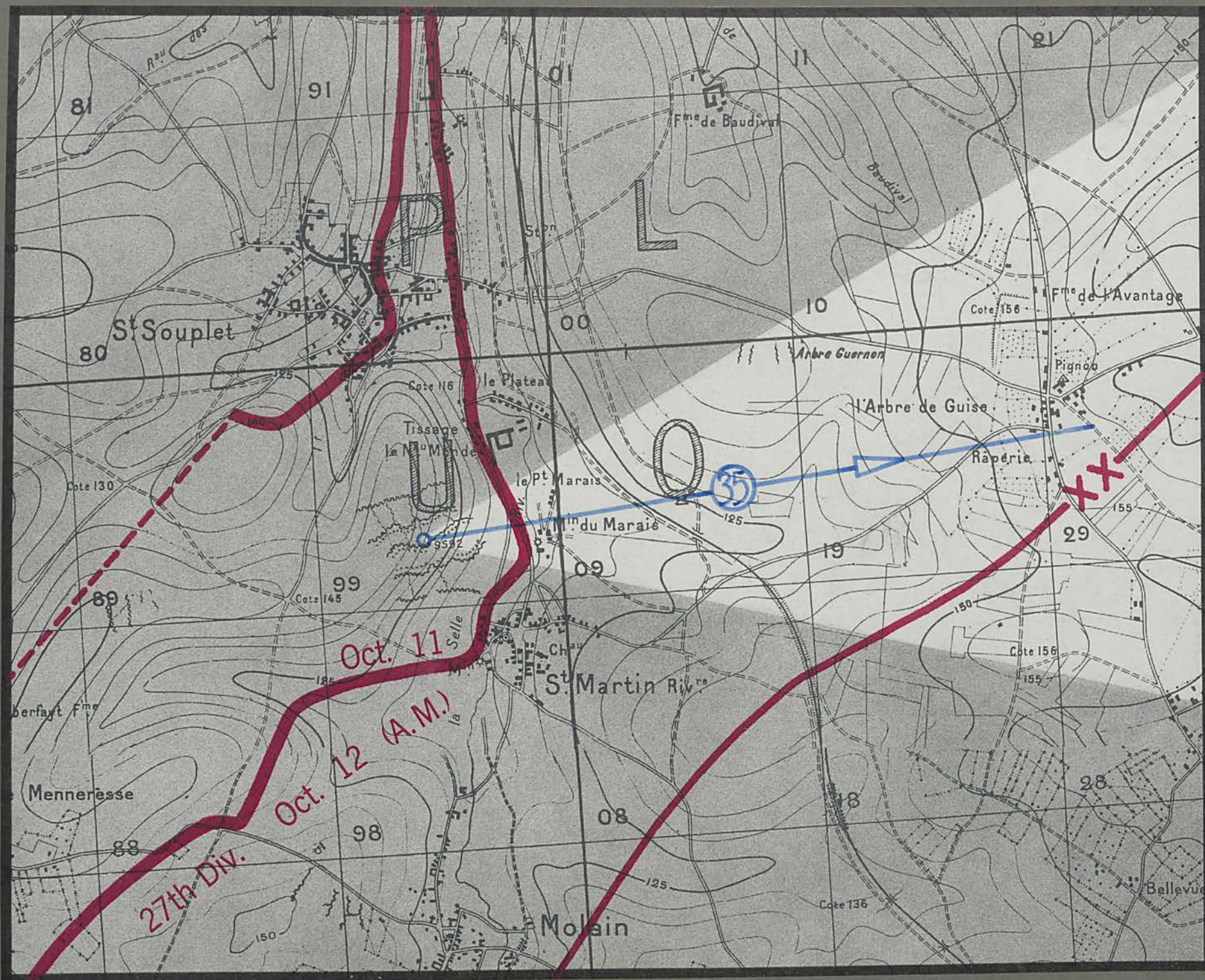
Molain

Vaux-Andigny









Arbre Guernon

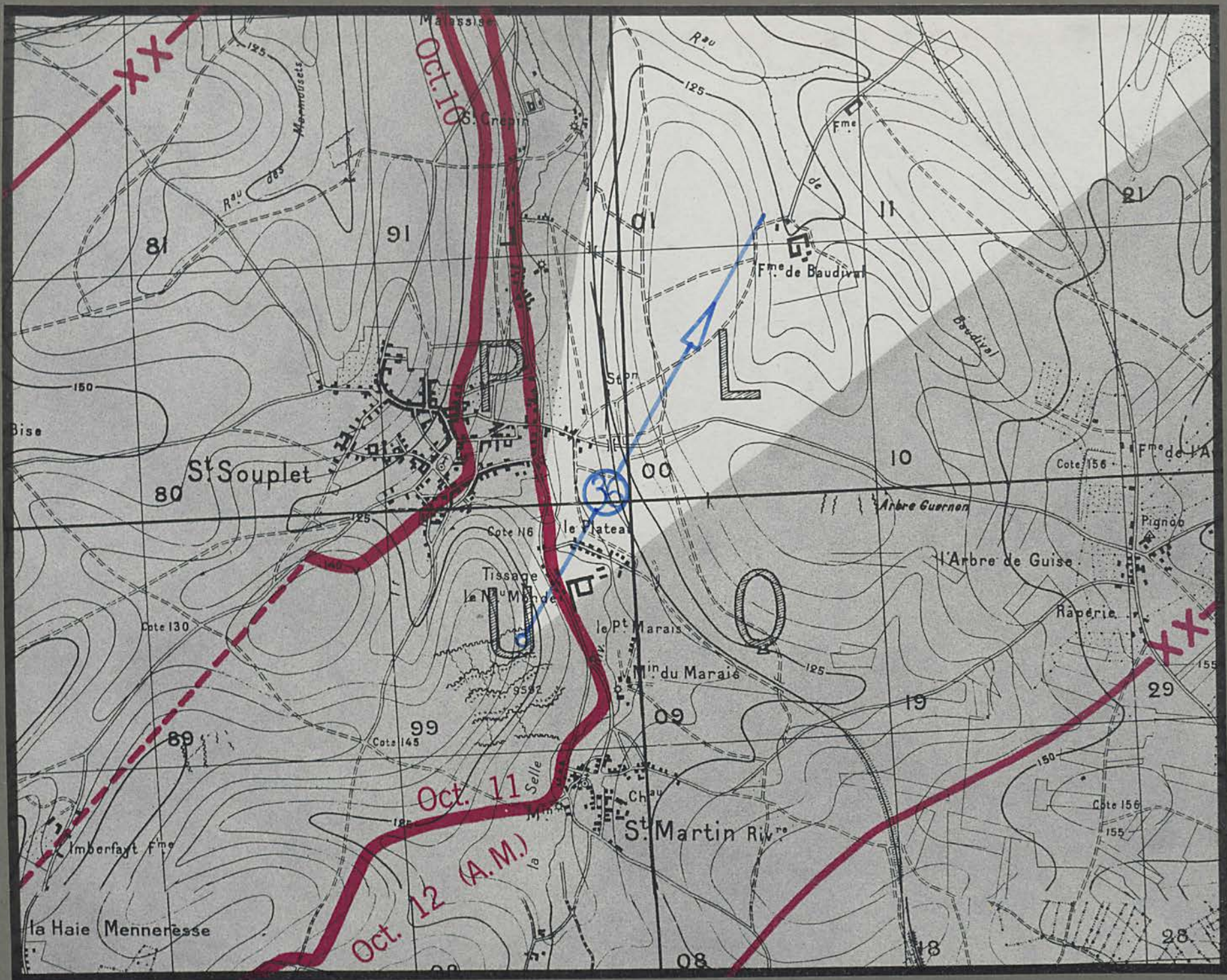
Petit Marais

Arbre de Guise

M^{rs} du Marais

Selle River





St Souplet station

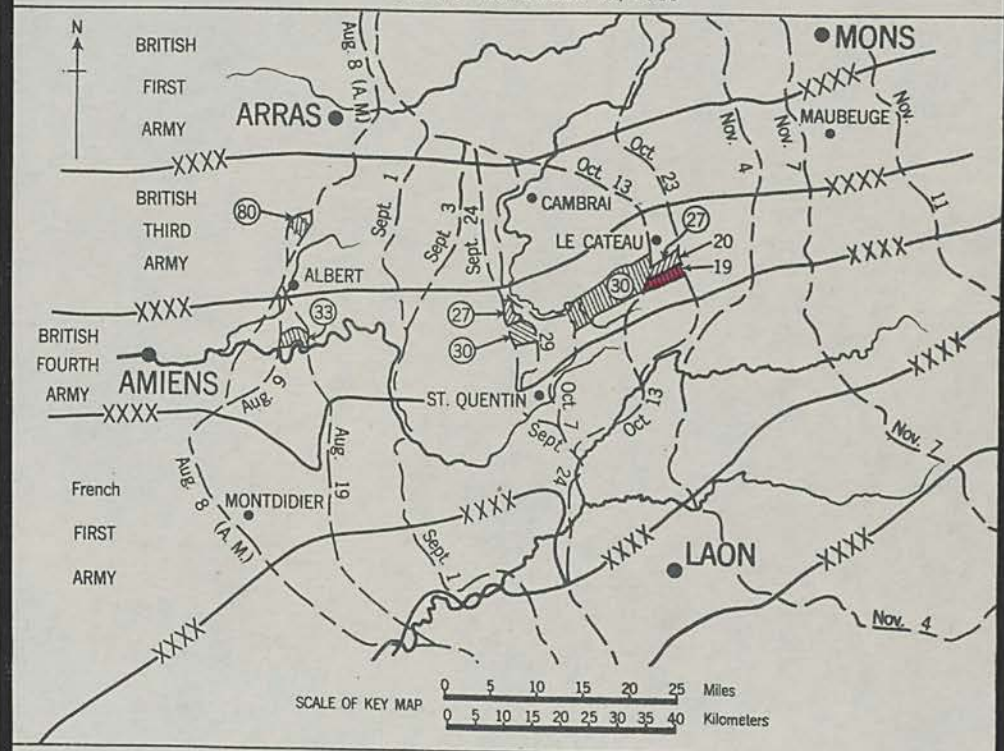
Tissage

F^m de Baudival



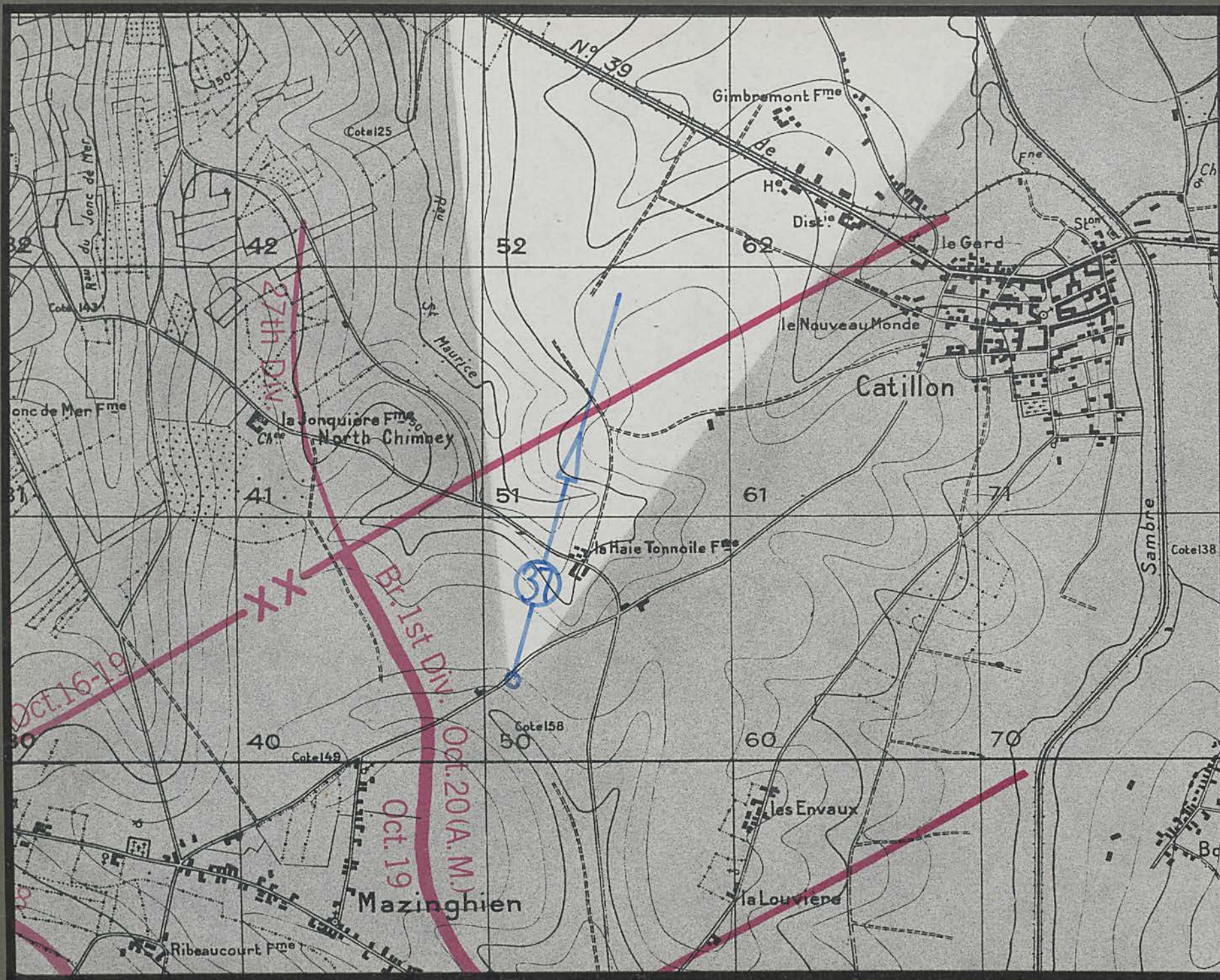
30TH DIVISION
SOMME OFFENSIVE
OCTOBER 3-22, 1918
(MAP NO. 2)

KEY MAP
SOMME OFFENSIVE
 AUGUST 8 - NOVEMBER 11, 1918



SCALE OF KEY MAP
 0 5 10 15 20 25 Miles
 0 5 10 15 20 25 30 35 40 Kilometers

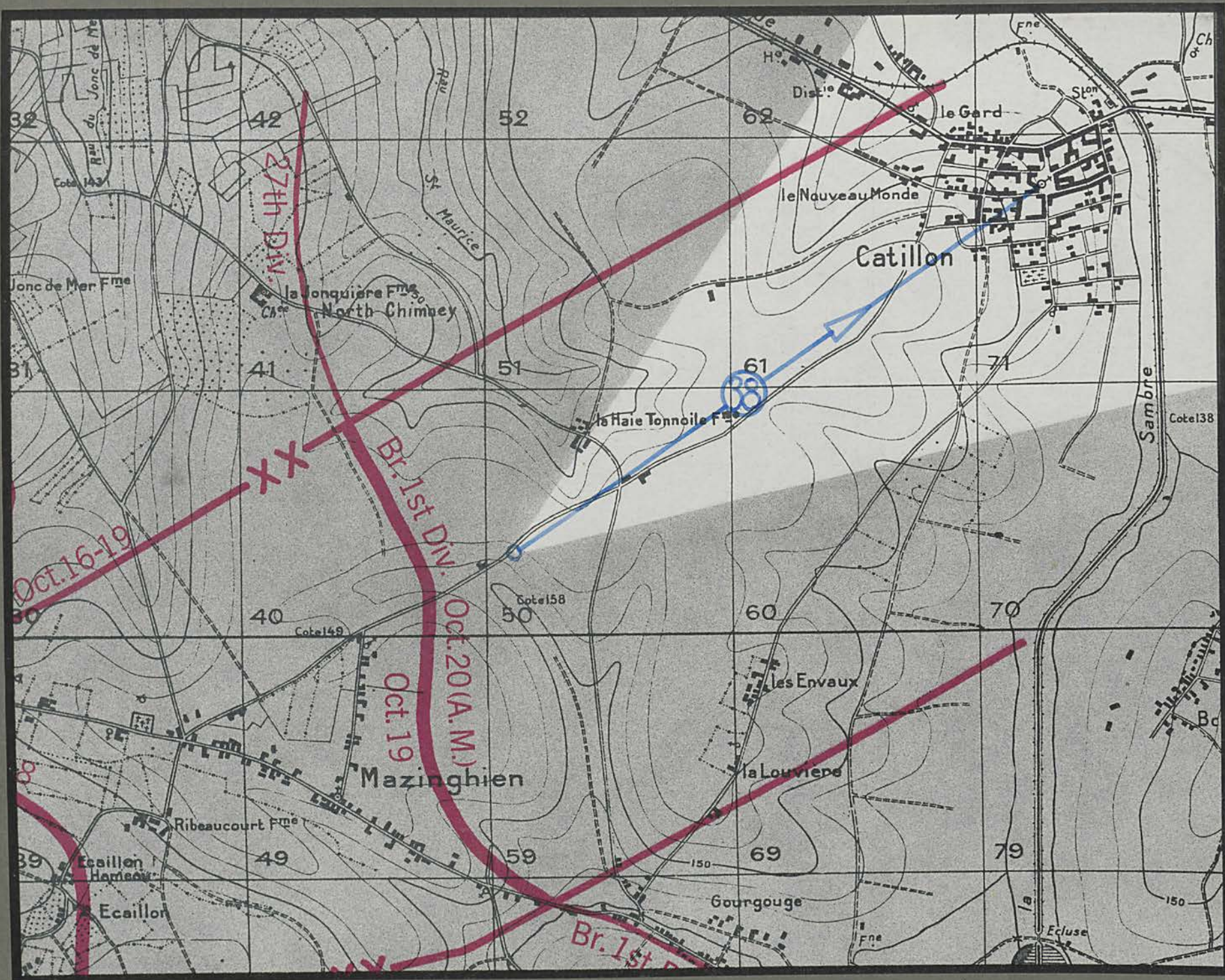
- Area Covered by Operation Shown on Summary Map
- Ground Gained by American Divisions
- Ground Gained by British and French Divisions
- Front Line
- 27 Circled numeral indicates American Division





Mazinghier-Catillon road

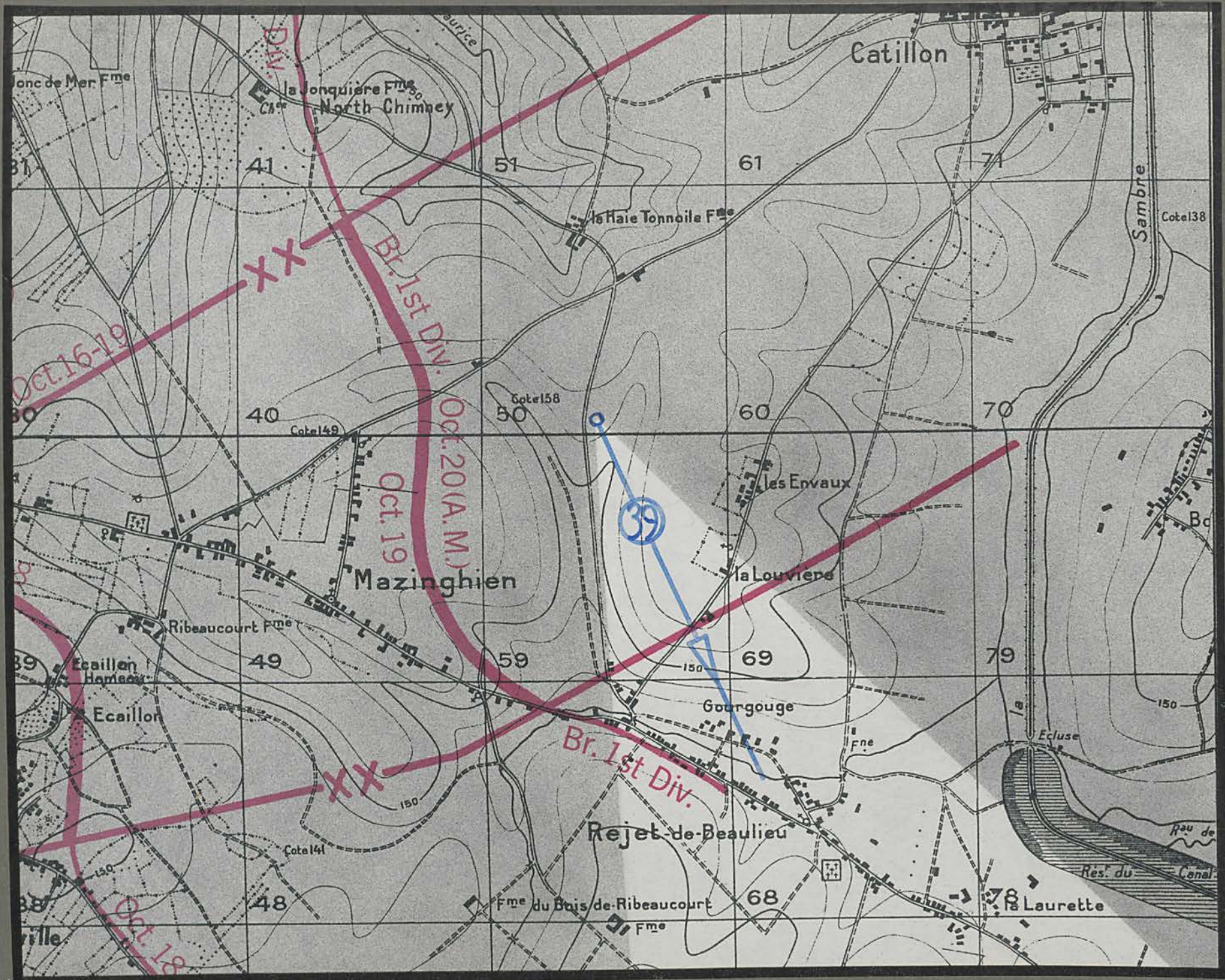
La Haie Tonnaire FM



Mazinghien - Catillon

Catillon Church





5.9-9.25

Rejet-de-Beaulieu



COMMAND AND GENERAL STAFF SCHOOL
Fort Leavenworth, Kansas

LIBRARY REGULATIONS

1. Books, pamphlets, and periodicals must be charged at the loan desk (signature on book-loan card) before being taken from the library.

2. Any item drawn from the Library must be returned within one month.

Exceptions to this regulation are as follows:

- (1) Material issued to classes as a whole.
- (2) Material issued to instructors for professional use.
- (3) New books which are in demand must be returned within one week.
- (4) Books required for faculty use are subject to recall at any time.
- (5) All persons having library material in their possession will return same before leaving the post permanently.
- (6) Books loaned outside the School must be returned within two weeks.

3. Reference books and current periodicals will not be removed from the Library.

65503

1157 2 1964

COMBINED ARMS RESEARCH LIBRARY
FORT LEAVENWORTH, KS
3 1695 00464 6659

LIBRARY
COMMAND
AND
STAFF
COLLEGE

