

TERRAIN PHOTOGRAPHS
AMERICAN WORLD WAR BATTLEFIELDS
IN EUROPE

92ND DIVISION

MARBACHE SECTOR &
WOEVRE PLAIN OPERATION

OCTOBER 3 - NOVEMBER 11, 1918

PREPARED BY
THE AMERICAN BATTLE MONUMENTS
COMMISSION

THE COMMAND AND STAFF COLLEGE

LIBRARY



Class Symbol M 9403-H6-C.73-G3-C92

Accession Number N 69631

PREFACE

THIS album is part of a collection of photographs of the various battlefields in Europe upon which the Armed Forces of the United States were actively engaged during World War I.

These terrain photographs were taken and prepared by the American Battle Monuments Commission, as provided in the act of Congress of March 4, 1923, to complete the historical record of the operations of the American units. The series comprises 69 albums containing 1,396 photographs.

The contents of these albums will be of particular value when studied in conjunction with the Summaries of Operations, prepared by the American Battle Monuments Commission, which relate in detail the combat services of each American division.

On the page preceding the photographs will be found a small-scale key map showing the general operation of which this divisional operation was a part. In the pocket inside the back cover will be found a reprint of a 1:20,000 map, of the type used during the war, showing the operation covered by the photographs in this

album. On this index map have been indicated the position of the camera and the direction in which it was sighted in taking each photograph.

On the page opposite each photograph is a section of the 1:20,000 map of the terrain in the vicinity of that pertaining to the photograph. The white wedge-shaped portion of the map indicates the sector of terrain which actually appears in the picture. The plotted position of the camera and the axis of the picture are shown in blue, the length of the blue line approximately indicating the depth of the view. The circled number corresponds to the number of the photograph, of which the numerals before the dash indicate the division and the numerals after the dash indicate the serial number of the photograph in this division.

Various topographical features visible in the photographs have been indicated by name to facilitate orientation.

Complete sets of these albums have been deposited with the National Archives, the Library of Congress, the Historical Division of the War Department General Staff, and the Command and Staff College.

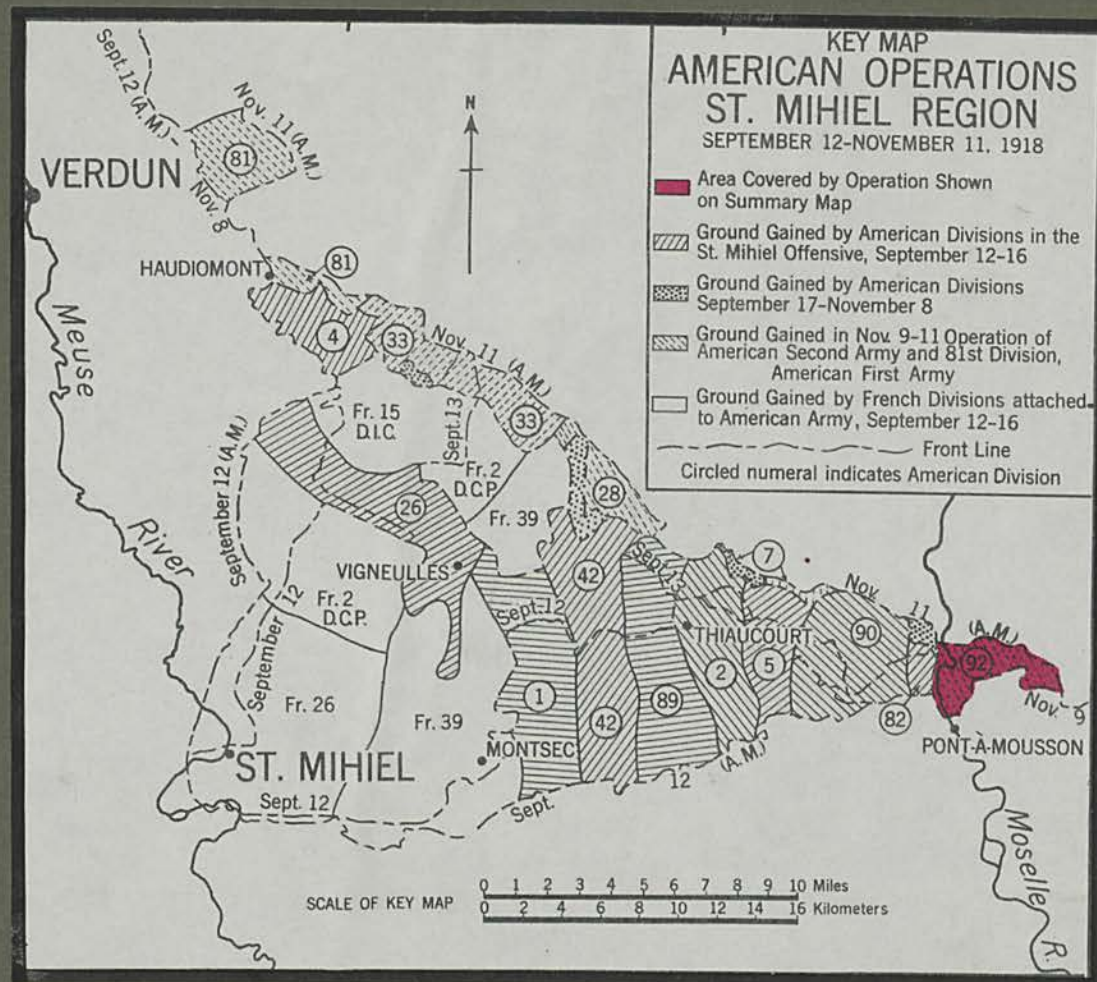
AMERICAN BATTLE MONUMENTS COMMISSION,

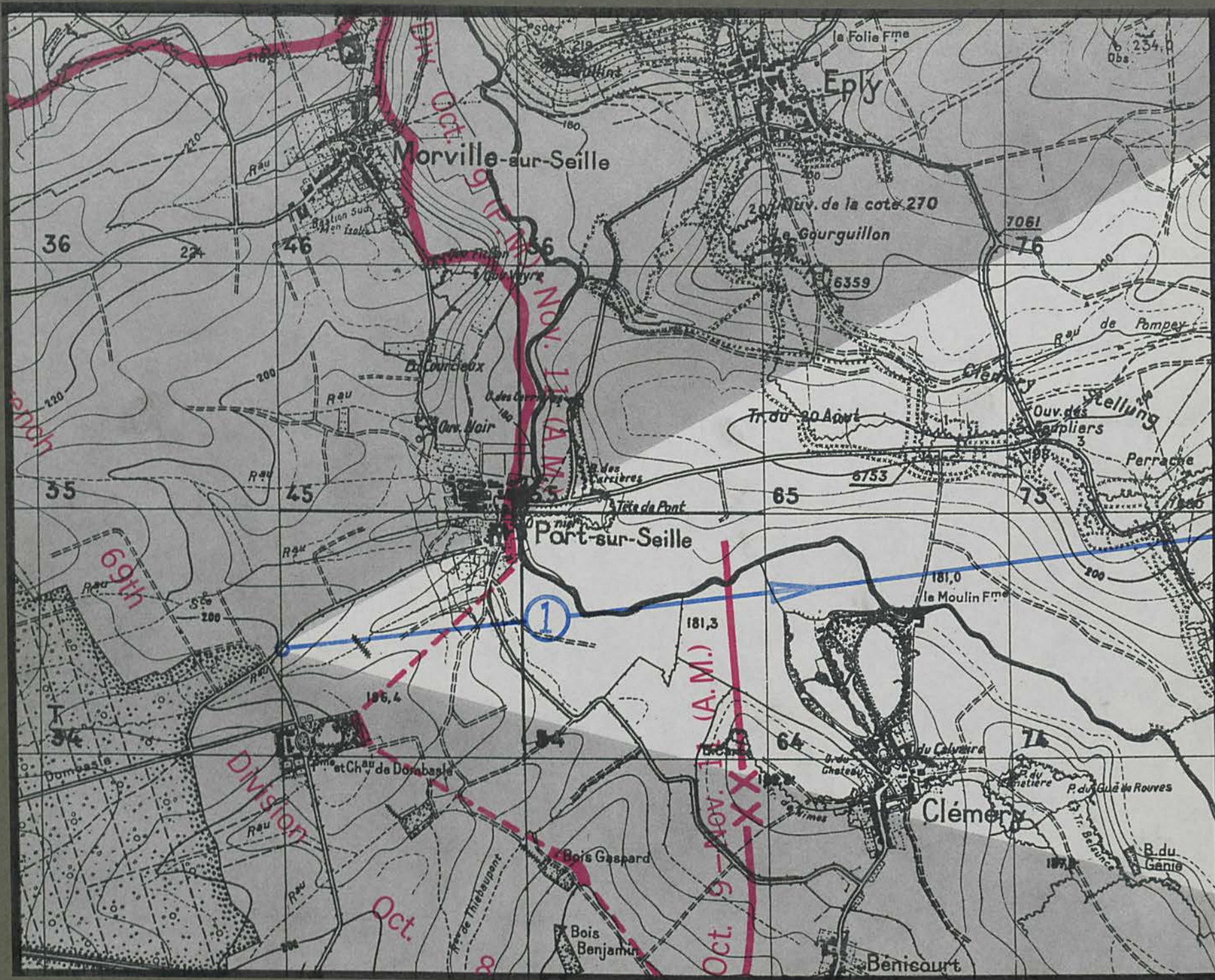
John J. Pershing
CHAIRMAN

NOV 22 1946

92ND DIVISION
MARBACHE SECTOR
AND
WOEVRE PLAIN OPERATION

OCTOBER 8—NOVEMBER 11, 1918



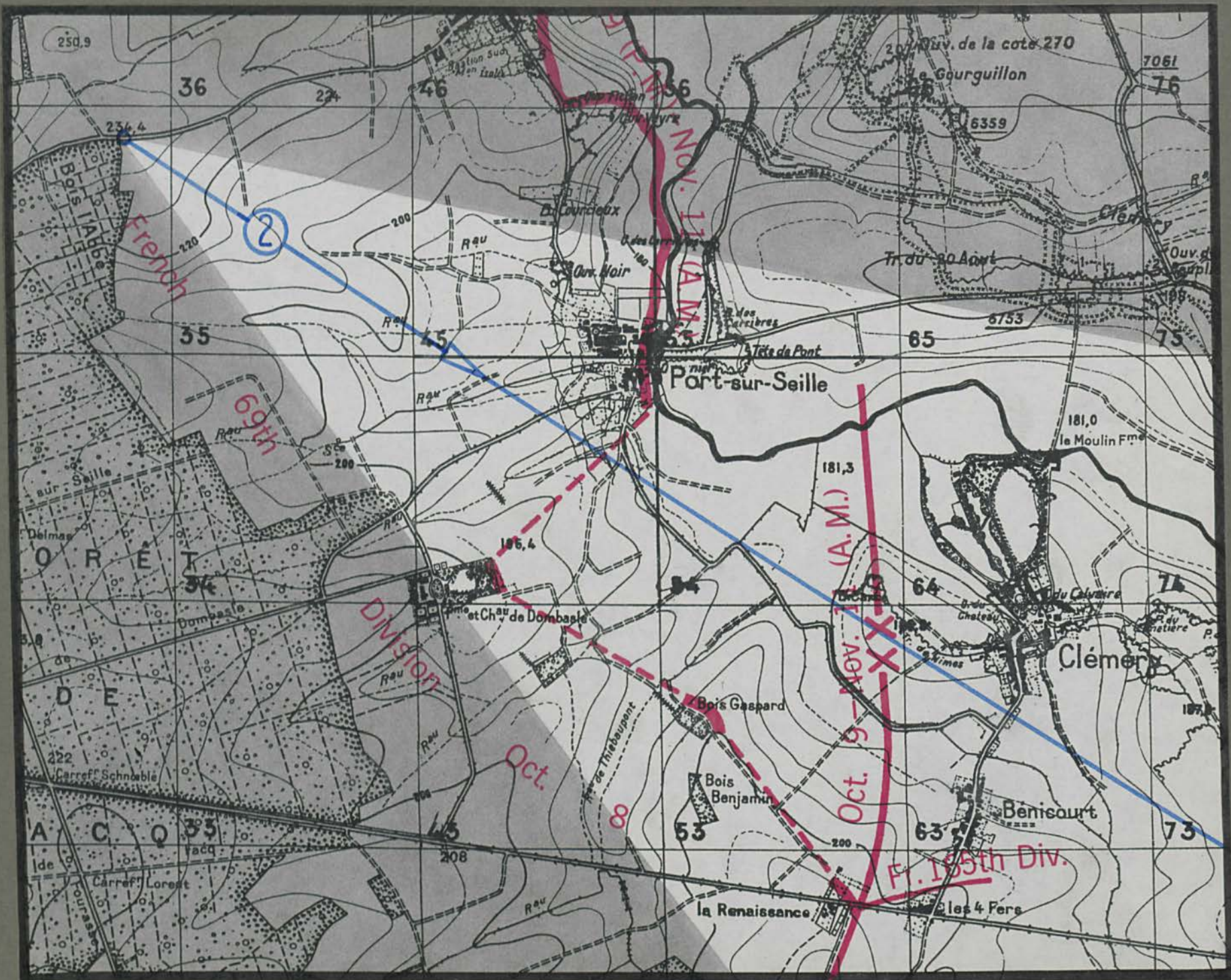


Port-sur-Seille

Alton-Port-s-Seille road

Clémery







Rouvés

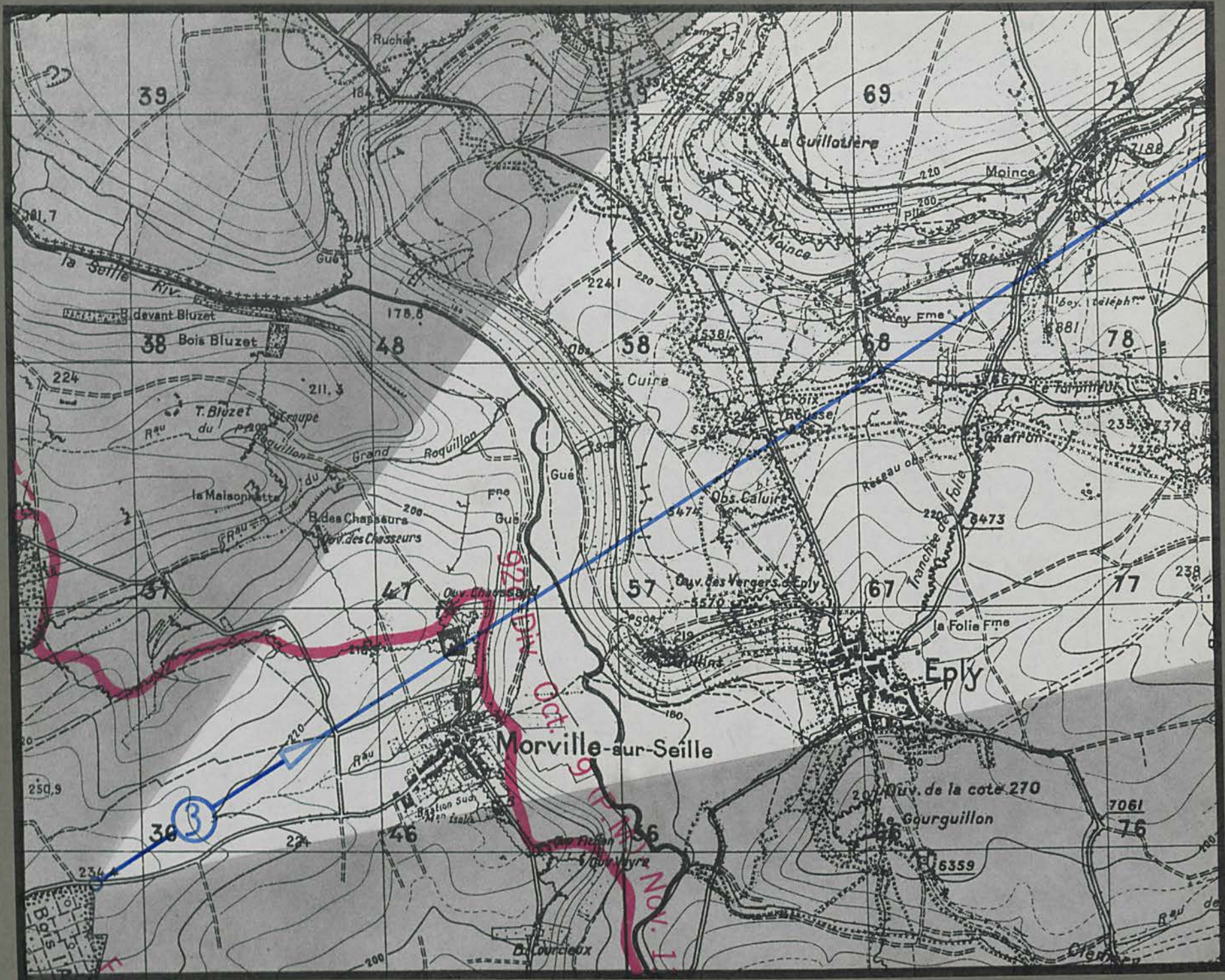
Clémery

Port-sur-Seille

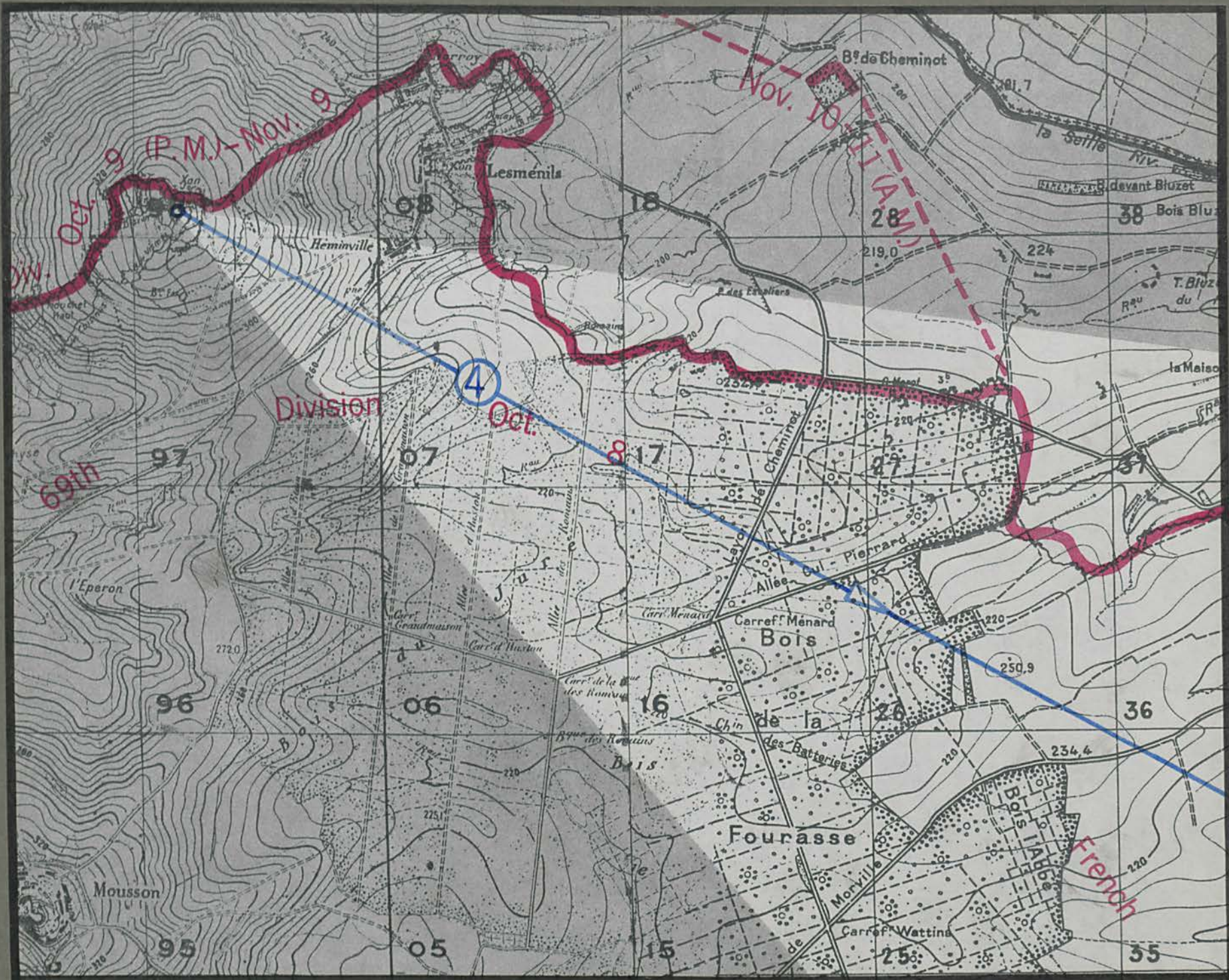
Manoncourt Bois Gaspard

ch^{ou} de Dombasle

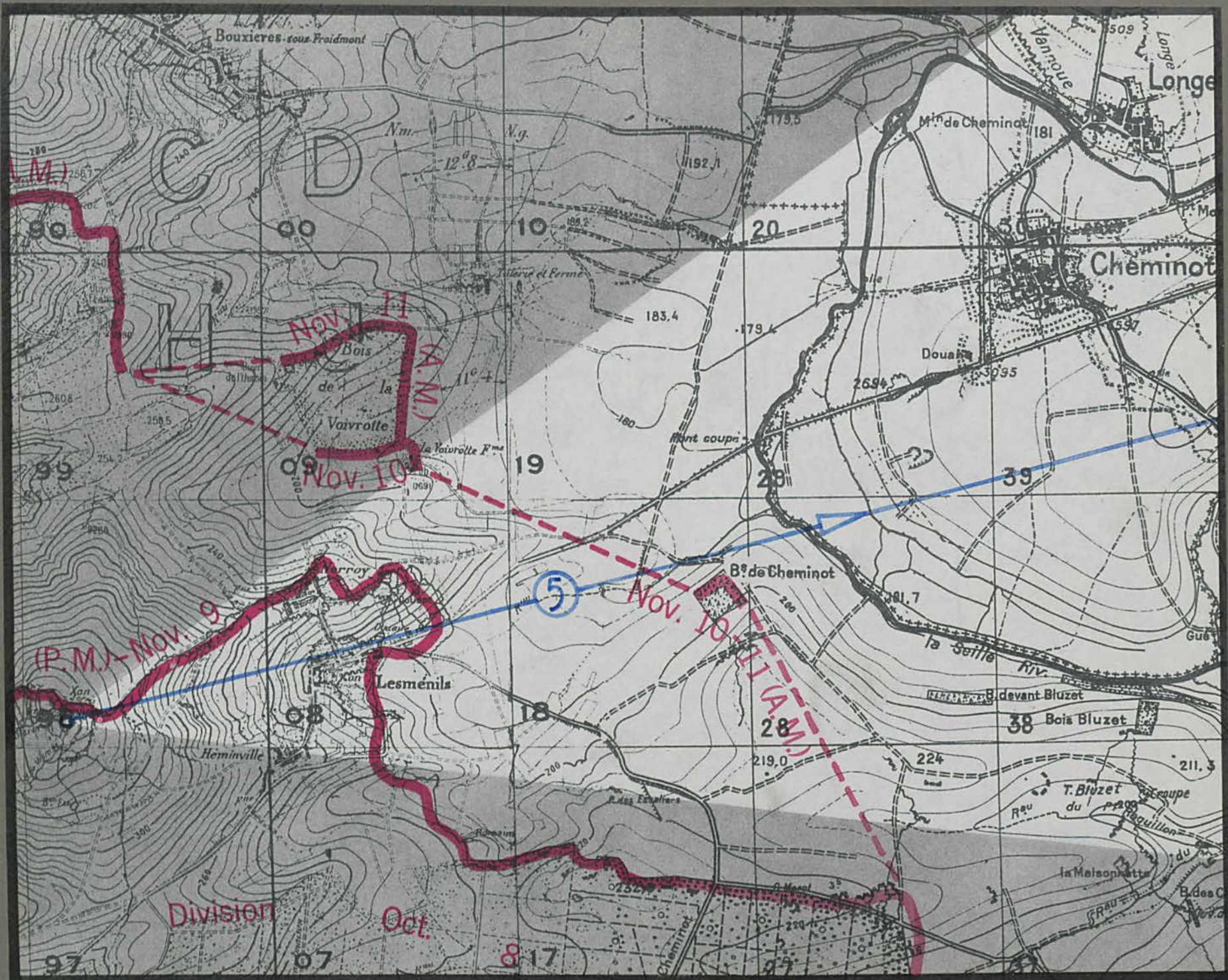
la Renaissance











La Voivrotte Farm

Longeville

Norroy

Cheminot

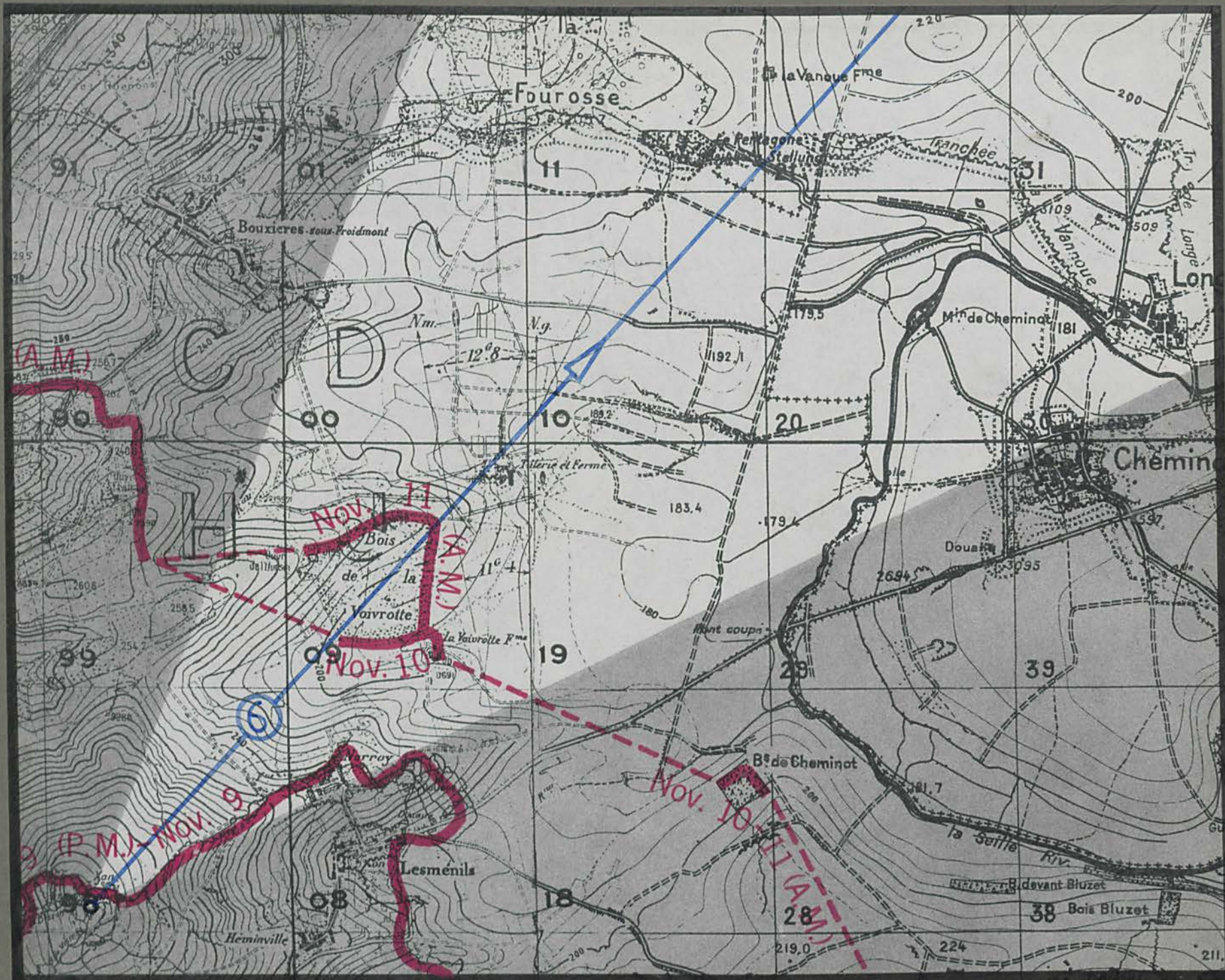
la Seille River

Lesmenils

B. de Cheminot

Lesmenils - Morville road





Bois de la Fourasse

Bois Jurieux

Bois de la Voivrotte

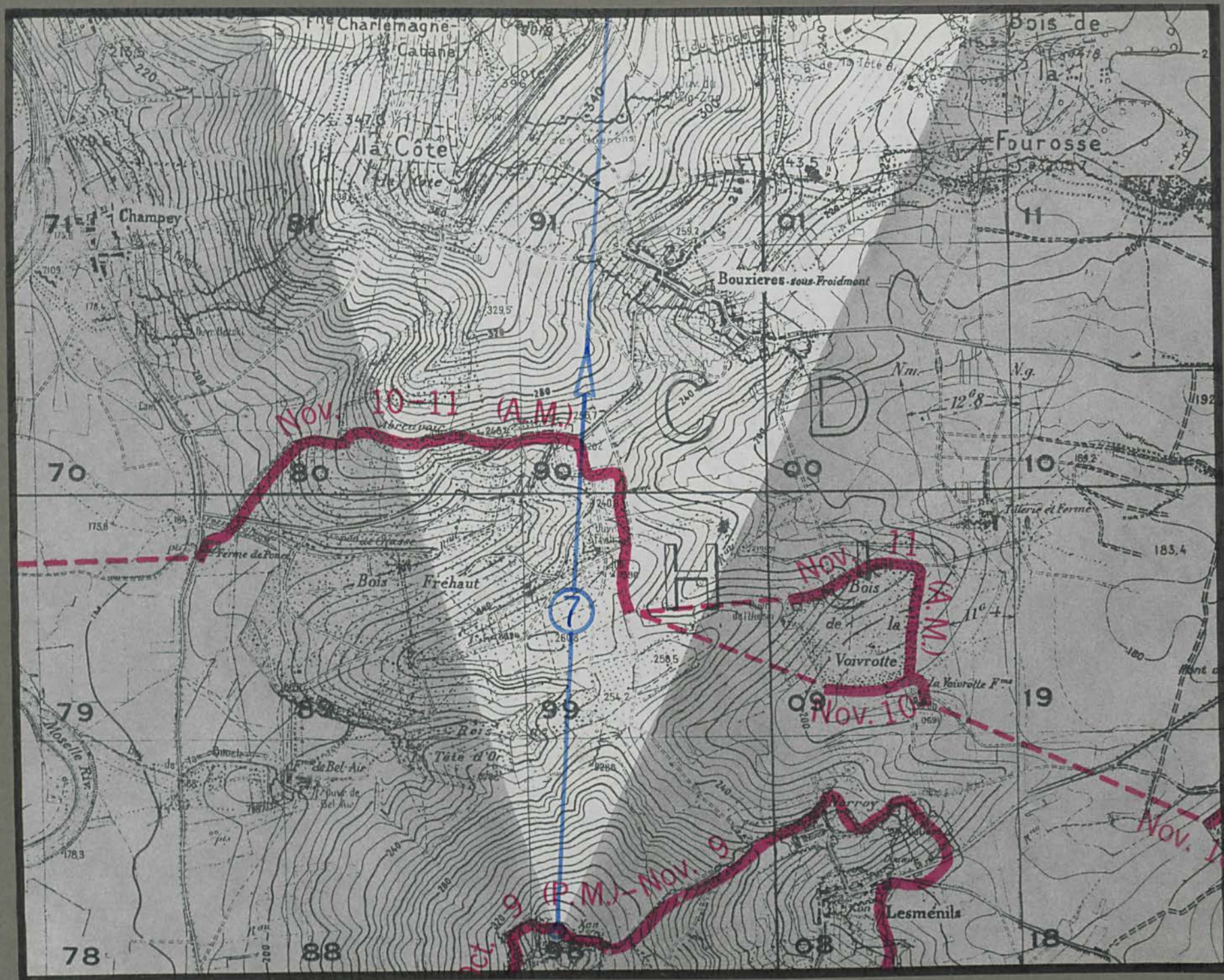
la Seille River

la Voivrotte Farm

Longeville

M^{re} de Cheminot





Hill 401

la Cote

Hill 396

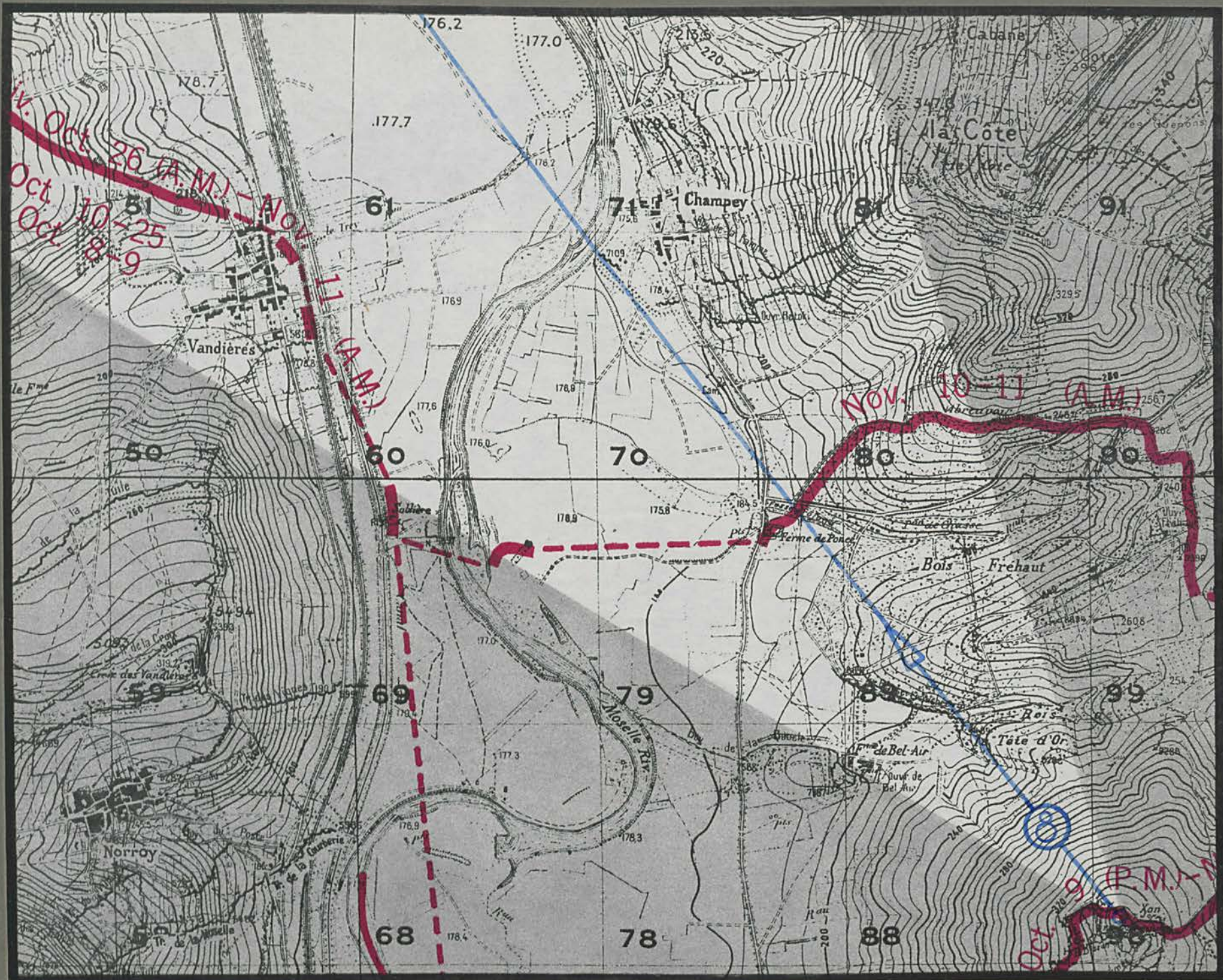
Bois Frehaut

Bouxières

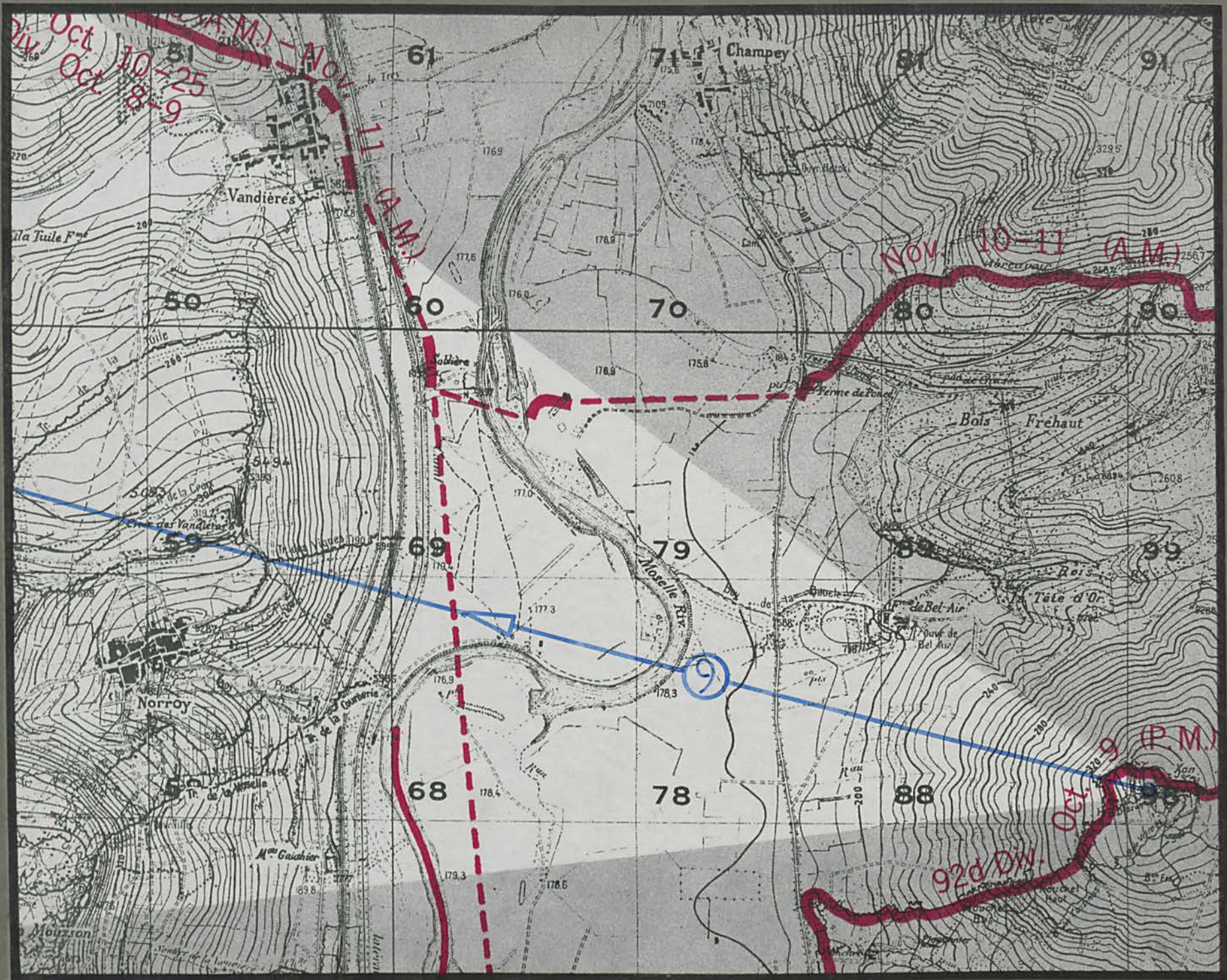
Bouxières -
Mardigny
road

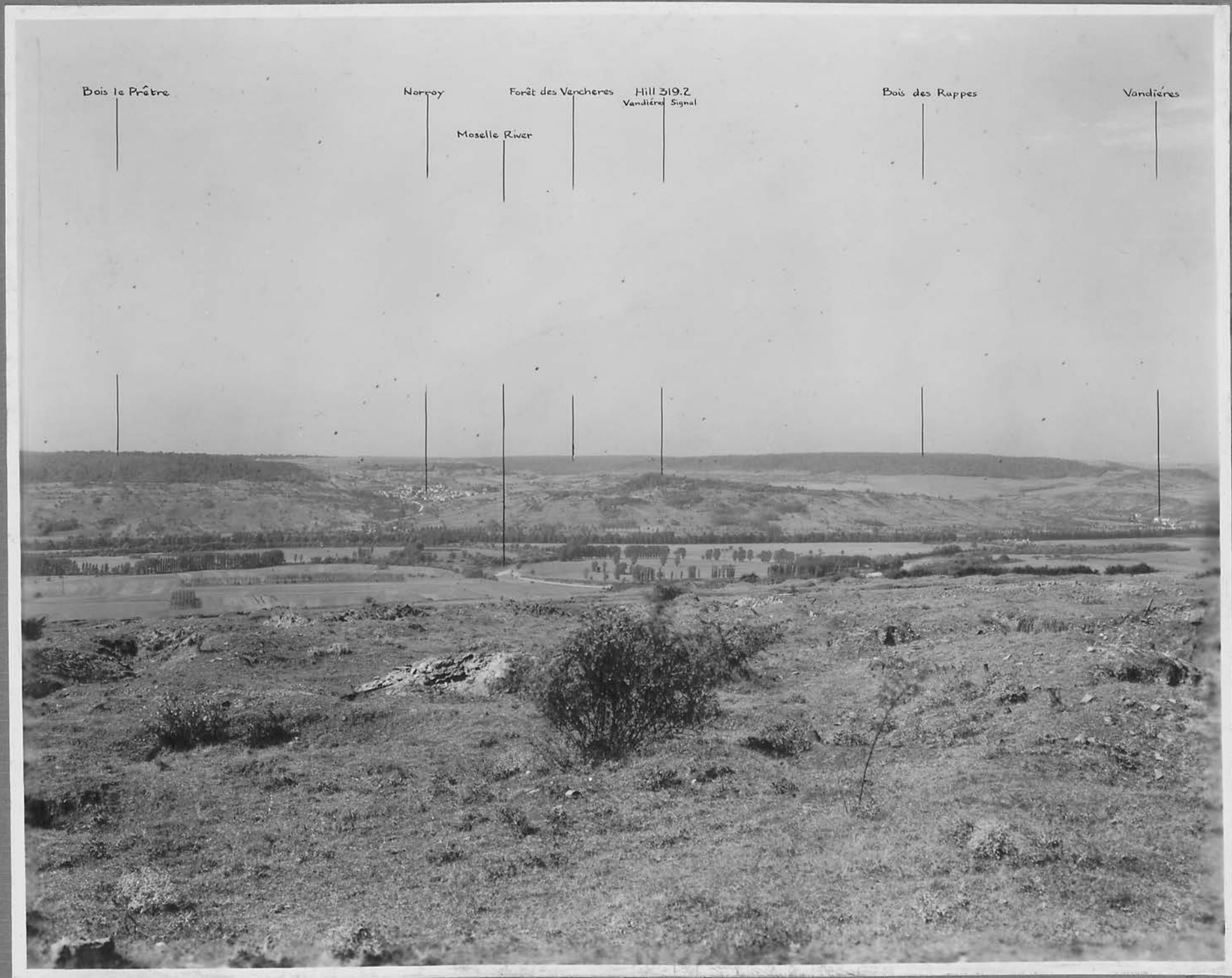
Bois de la Fauresse











Bois le Prêtre

Norroy

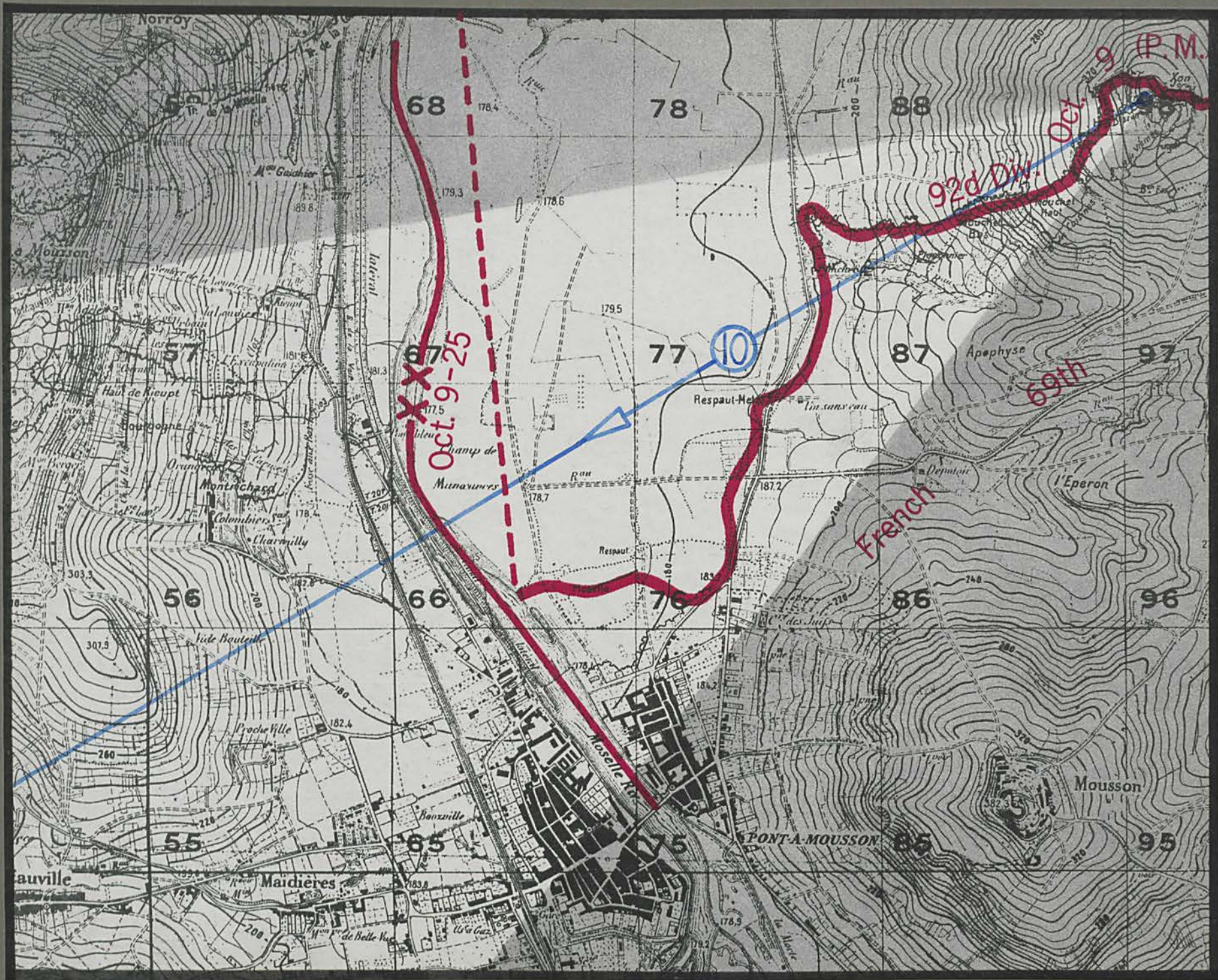
Moselle River

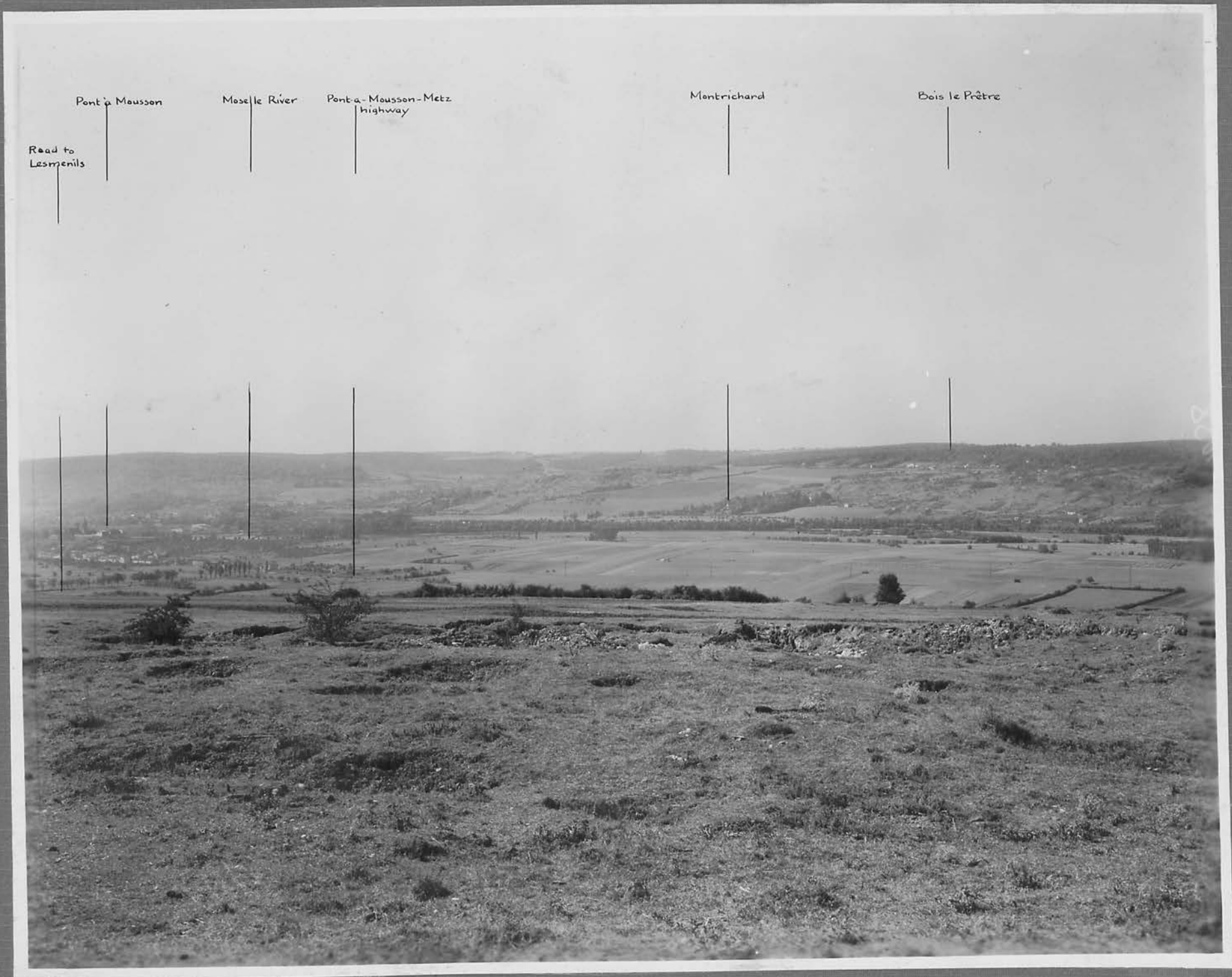
Forêt des Vénèreres

Hill 319.2
Vandières Signal

Bois des Rappes

Vandières





Read to
Lesmenils

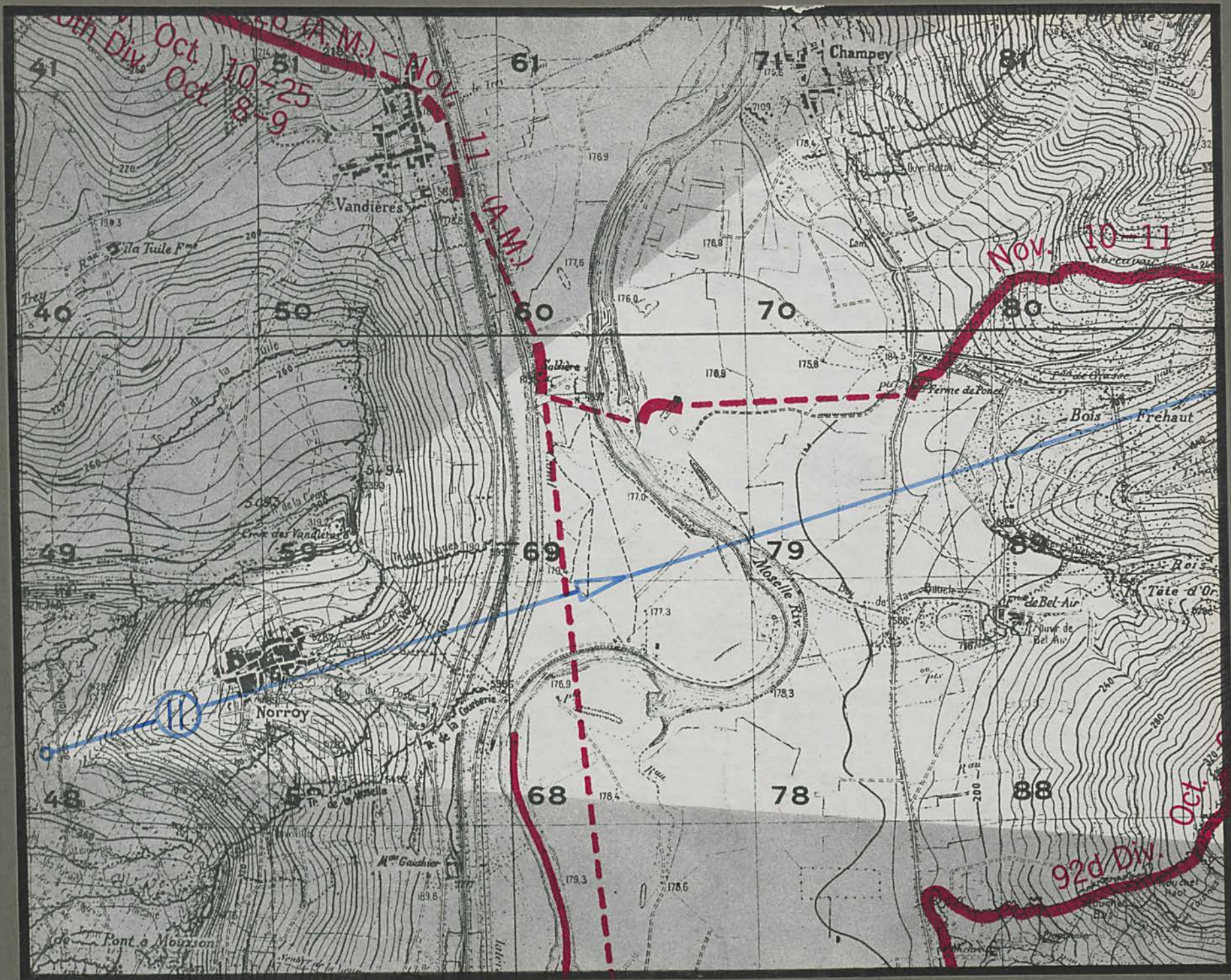
Pont à Mousson

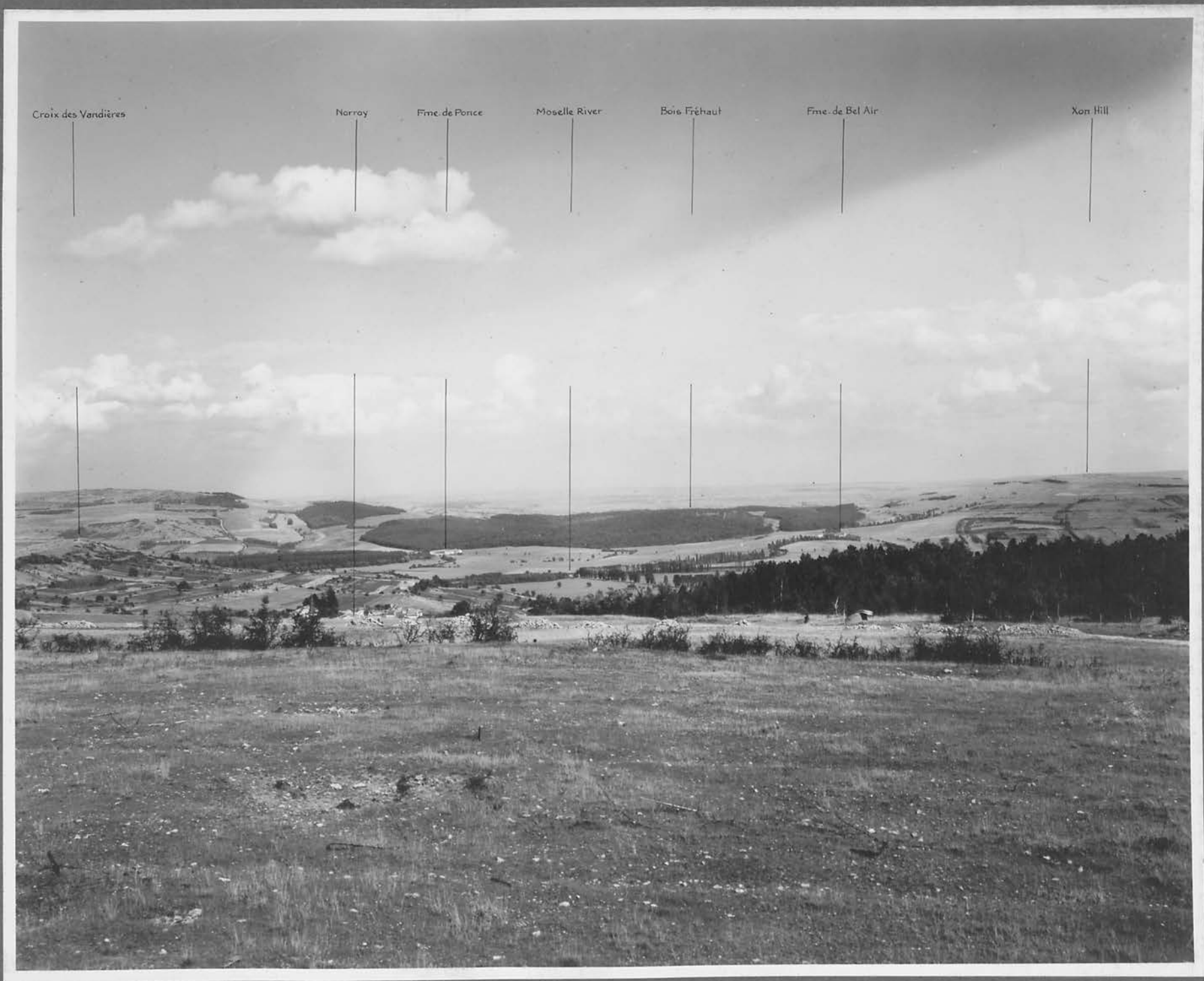
Moselle River

Pont-a-Mousson-Metz
highway

Mentrichard

Bois le Prêtre





COM

COMBINED ARMS RESEARCH LIBRARY
FORT LEAVENWORTH, KS

SCHOOL



3 1695 00464 6741

1. Books, pamphlets, and periodicals must be charged at the loan desk (signature on book-loan card) before being taken from the library.

2. Any item drawn from the Library must be returned within one month.

Exceptions to this regulation are as follows:

- (1) Material issued to classes as a whole.
- (2) Material issued to instructors for professional use.
- (3) New books which are in demand must be returned within one week.
- (4) Books required for faculty use are subject to recall at any time.
- (5) All persons having library material in their possession will return same before leaving the post permanently.
- (6) Books loaned outside the School must be returned within two weeks.

3. Reference books and current periodicals will not be removed from the Library.

LIBRARY
COMMAND
AND
STAFF
COLLEGE

