

AWARD NUMBER: W81XWH-18-1-0585

TITLE: Tuning MSCs to Anti-Tumor Property for Ovarian Cancer Therapy

PRINCIPAL INVESTIGATOR: Huabiao Chen, MD, PhD

CONTRACTING ORGANIZATION: Massachusetts General Hospital  
Boston, MA 02114-2621

REPORT DATE: September 2019

TYPE OF REPORT: Annual

PREPARED FOR: U.S. Army Medical Research and Materiel Command  
Fort Detrick, Maryland 21702-5012

DISTRIBUTION STATEMENT: Approved for Public Release;  
Distribution Unlimited

The views, opinions and/or findings contained in this report are those of the author(s) and should not be construed as an official Department of the Army position, policy or decision unless so designated by other documentation.

<b>REPORT DOCUMENTATION PAGE</b>			<i>Form Approved</i> OMB No. 0704-0188		
Public reporting burden for this collection of information is estimated to average 1 hour per response, including the time for reviewing instructions, searching existing data sources, gathering and maintaining the data needed, and completing and reviewing this collection of information. Send comments regarding this burden estimate or any other aspect of this collection of information, including suggestions for reducing this burden to Department of Defense, Washington Headquarters Services, Directorate for Information Operations and Reports (0704-0188), 1215 Jefferson Davis Highway, Suite 1204, Arlington, VA 22202-4302. Respondents should be aware that notwithstanding any other provision of law, no person shall be subject to any penalty for failing to comply with a collection of information if it does not display a currently valid OMB control number. <b>PLEASE DO NOT RETURN YOUR FORM TO THE ABOVE ADDRESS.</b>					
<b>1. REPORT DATE</b> September 2019		<b>2. REPORT TYPE</b> Annual		<b>3. DATES COVERED</b> 1 Sep 2018 - 31 Aug 2019	
<b>4. TITLE AND SUBTITLE</b> Tuning MSCs to Anti-Tumor Property for Ovarian Cancer Therapy			<b>5a. CONTRACT NUMBER</b>		
			<b>5b. GRANT NUMBER</b> W81XWH-18-1-0585		
			<b>5c. PROGRAM ELEMENT NUMBER</b>		
E-Mail: Huabiao.Chen@mgh.harvard.edu			<b>5d. PROJECT NUMBER</b>		
			<b>5e. TASK NUMBER</b>		
			<b>5f. WORK UNIT NUMBER</b>		
<b>7. PERFORMING ORGANIZATION NAME(S) AND ADDRESS(ES)</b> Massachusetts General Hospital 55 Fruits Street, Boston, MA 02114-2621			<b>8. PERFORMING ORGANIZATION REPORT NUMBER</b>		
<b>9. SPONSORING / MONITORING AGENCY NAME(S) AND ADDRESS(ES)</b> U.S. Army Medical Research and Materiel Command Fort Detrick, Maryland 21702-5012			<b>10. SPONSOR/MONITOR'S ACRONYM(S)</b>		
			<b>11. SPONSOR/MONITOR'S REPORT NUMBER(S)</b>		
<b>12. DISTRIBUTION / AVAILABILITY STATEMENT</b> Approved for Public Release; Distribution Unlimited					
<b>13. SUPPLEMENTARY NOTES</b>					
<b>14. ABSTRACT</b> Both anti-tumoral and pro-tumoral effects of mesenchymal stem cells (MSCs) in preclinical treatment of ovarian cancer have been controversially demonstrated. In this study, we profiled the phenotypes of mouse compact bone-derived MSCs (CB-MSCs) and bone marrow-derived MSCs (BM-MSCs) and found that CB-MSCs expressed lower CD90 compared to BM-MSCs. We examined gene expression of immune regulating cytokines of CB-MSCs in 2D and 3D culture and under stimulation with TLR4 agonist LPS or immune activator VIC-008. Our data showed that when CB-MSCs were cultured in simulated in vivo 3D condition, CD90 expression was further decreased. Moreover, gene expressions of immune activating cytokines IL-12, IL-21, IFN $\gamma$ and a pro-inflammatory cytokine CXCL10 in CB-MSCs were increased in 3D culture whereas gene expression of anti-inflammatory cytokines IL-10 and CCL5 were downregulated. Stimulation of CB-MSCs by LPS or VIC-008 presented similar profile of the cytokine gene expressions to that in 3D culture which might benefit the anti-tumor efficacy of CD90low MSCs. The anti-tumor effects of CD90low CB-MSCs alone or in combination with VIC-008 were evaluated in a syngeneic orthotopic mouse model of ovarian cancer. Treatment that combines CB-MSCs and VIC-008 significantly decreased tumor growth and prolonged mouse survival. This was associated with the increase of activated anti-tumoral CD4+ and CD8+ T cells and the decrease of Treg cells in the tumor microenvironment. Our study demonstrates the synergistic anti-tumoral efficacy by application of CB-MSCs combined with immune activator VIC-008 and provides new insight into CD90low MSCs as a new anti-tumor arsenal.					
<b>15. SUBJECT TERMS</b> mesenchymal stem cells, CD90, ovarian cancer, Immunotherapy					
<b>16. SECURITY CLASSIFICATION OF:</b>			<b>17. LIMITATION OF ABSTRACT</b>	<b>18. NUMBER OF PAGES</b>	<b>19a. NAME OF RESPONSIBLE PERSON</b> USAMRMC
<b>a. REPORT</b>	<b>b. ABSTRACT</b>	<b>c. THIS PAGE</b>			<b>19b. TELEPHONE NUMBER</b> (include area code)
Unclassified	Unclassified	Unclassified	Unclassified	29	

## Table of Contents

	<u>Page</u>
1. Introduction.....	4
2. Keywords.....	5
3. Accomplishments .....	5
4. Impact .....	12
5. Changes/Problems.....	13
6. Products.....	13
7. Participants & Other Collaborating Organizations.....	13
8. Special Reporting Requirements.....	14
9. References.....	14
10. Appendices.....	16

## 1. Introduction

Ovarian cancer cells can form a highly inflammatory microenvironment contributing to the malignancy of the tumor. In particular, several pro-inflammatory cytokines such as TNF- $\alpha$ , IL-1 $\beta$ , and IL-6 produced by ovarian tumor cells or activated immune cells, have been shown to increase tumor growth and influence clinical disease outcome and prognosis [1]. Mesenchymal stem cells (MSCs) have dominant advantages in inflammatory control and balance [2, 3]. Previous studies applied genetically engineered TRAIL-secreting MSCs to modulate inflammation and target tumors and showed significant effects in control of tumor burden, metastasis and tumor-associated inflammation in malignant glioma [4], colorectal carcinoma [5], metastatic renal cell carcinoma [6], pancreatic cancer [7] and mesothelioma [8, 9]. In the treatment of malignant mesothelioma, intraperitoneal administration of either MSCs alone or MSCs-TRAIL decreased the peritoneal inflammation by reducing levels of inflammatory cytokines IL-1 $\alpha$ , CCL2 and TNF- $\alpha$  [8], indicating the inflammatory downregulation by MSCs in tumor microenvironment may also be applicable to the treatment of ovarian cancer.

The development of cancer immunotherapies favors combination strategies for enhancing APC function and enhancing T cell effector activity while eliminating immunosuppression [10]. Tumor-specific antigen targeting dendritic cell (DC) vaccines represent the most promising approach, which can orchestrate all of the elements of the immune system for cancer therapy [11]. Mesothelin is a tumor antigen that is highly expressed on the surface of common epithelial cancers including ovarian cancer [12]. Mesothelin expression appears to drive tumor growth and metastasis and is negatively associated with survival in ovarian cancer, which indicates it could be a therapeutic target. Previously, we developed a fusion protein consisting of anti-mesothelin scFv genetically fused with *Mycobacterium tuberculosis* heat shock protein 70 (Hsp70) (designated as VIC-008). The anti-mesothelin scFv provides tumor-specific targeting while Hsp70 facilitates both innate and adaptive immune responses toward the tumor. Immune activation by VIC-008 includes activating monocytes and DCs to produce CC-chemokines for attraction of antigen-processing and presenting DCs, macrophages, and effector T and B cells; enhancing DC aggregation and maturation; stimulating phagocytosis of distressed and foreign cells; and inducing cytotoxic activity of natural killer cells [13, 14]. Previous study has shown that VIC-008 primes an adaptive, tumor-specific CD8<sup>+</sup> T cell immune response that is an absolute requirement for tumor control and survival prolongation in BR5FVB1 ovarian cancer mouse model [15]. The same finding was observed in a syngeneic orthotopic mouse model of ID8 ovarian cancer [16]. Although the fusion protein significantly enhanced survival of the ovarian tumor-bearing mice, it did not result in long-term remission. Our previous study also revealed that the increase of VIC-008 doses could further benefit mouse survival but could not delay onset of ascites and reduce ascites production, which may be the consequence of highly inflammatory microenvironment of malignant tumor.

To gain a better understanding of the potential for MSCs in cancer immunotherapy, in this study, we profiled the phenotypes of mouse compact bone derived MSCs (CB-MSCs) and found that CB-MSCs are different from bone marrow derived MSCs (BM-MSCs) in CD90 expression. Decreased expression of CD90 was reported to be associated with a loss of human MSC immunosuppressive activity [17], thus low CD90 expression observed in CB-MSCs might indicate a loss of immunosuppressive function, which might be helpful in the cancer immunotherapy. We further examined gene expression of immune regulating cytokines of CB-MSCs in 2D and 3D culture and under stimulation with VIC-008. Finally, we tested anti-tumor

effects of unmodified CB-MSCs alone and in combination with VIC-008 and demonstrated the synergistic efficacy of the combination therapy.

## 2. Keywords

Mesenchymal stem cells, CD90, the tumor microenvironment, ovarian cancer, immunotherapy, immunomodulation

## 3. Accomplishments

### **What were the major goals of the project?**

The proposal sets out to generate a definitive preclinical dataset that supports the further development of an MSC-based therapy for the treatment of ovarian cancer.

**Specific Aim 1:** To test the hypothesis that MSC treatment has a significant impact on tumor progression in murine syngeneic models of intraperitoneal ovarian cancer.

**(1a):** Identification of the phenotype of potential immune-activating MSC subset.

**(1b):** Evaluation of the effect of MSCs on clinical outcome and tumor progression in established syngeneic murine models of ovarian cancer.

**(1c):** Definition of phenotype and function of splenocytes, lymph node lymphocytes, and tumor infiltrating lymphocytes (TILs) in the established syngeneic murine models of ovarian cancer.

**Specific Aim 2:** To test the effects of GMs on MSCs *in vitro*.

**(2a):** Evaluation of secretome of MSCs loaded in GMs.

**(2b):** Evaluation of proliferation and engraftment of MSCs loaded in GMs.

**(2c):** Evaluation the interaction of MSCs with immune cells *in vitro* by co-culturing immune cells with GM-MS construct.

**Specific Aim 3:** To test the hypothesis that MSCs delivered by GMs improves survival and reduces tumor growth while increasing immune control and decreasing tumoral inflammation.

**(3a):** Evaluation of the effect of MSCs delivered by GMs on clinical outcome and tumor progression in established syngeneic murine models of ovarian cancer.

**(3b):** Quantitation of tumor specific T-cell responses, memory T cells and regulatory T cells in circulating blood, spleen, lymph node and tumor microenvironment upon treatment with MSCs alone or GM-delivered MSCs in murine model of ovarian cancer.

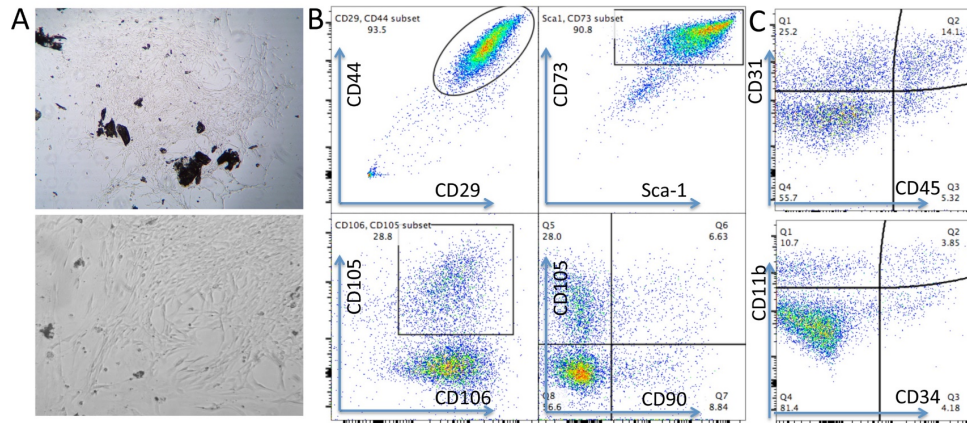
**(3c):** Quantitation of MDSCs, TAMs and DCs in circulating blood, spleen, lymph node, blood and tumor microenvironment upon treatment with MSCs alone or GM-delivered MSCs.

**(3d):** Evaluation of the inflammatory cytokines in blood serum, ascites and tumor tissue and identification of potential biomarkers for therapeutic efficacy or prognostics.

### **What was accomplished under these goals?**

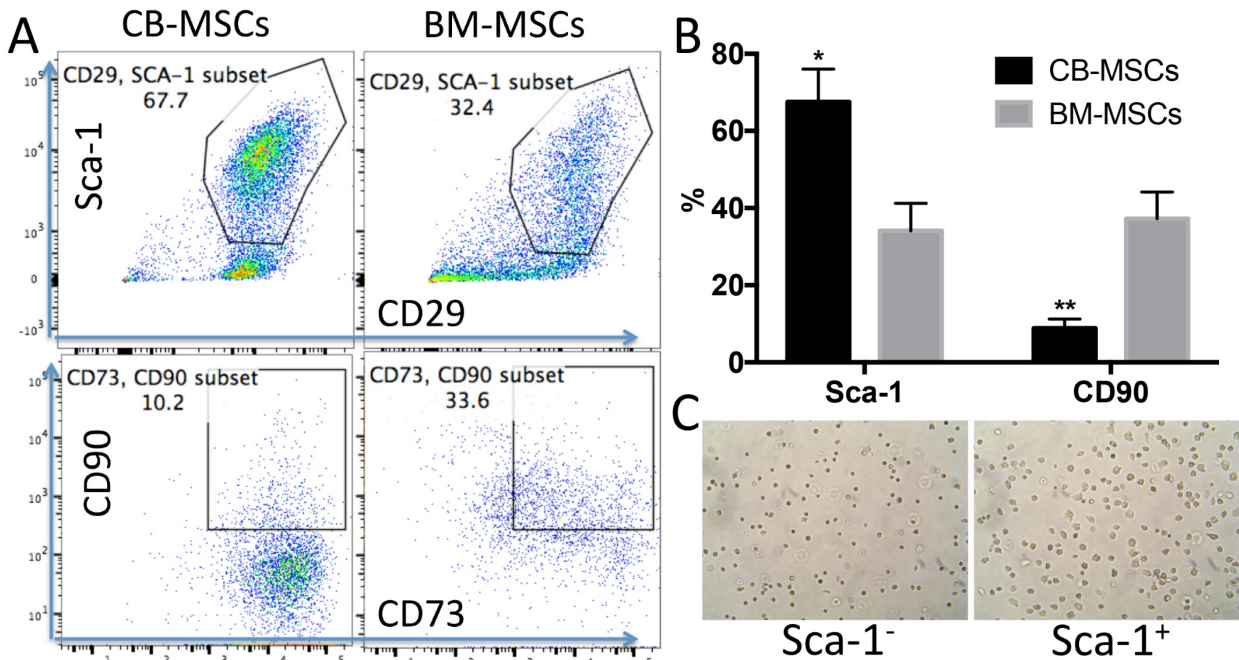
We have completed major elements of Aim 1 and Aim 2. During the study period, we successfully generated MSCs from mouse bone marrow and compact bone and profiled the phenotypes of the cells. We further examined gene expression of immune regulating cytokines of MSCs in 2D and 3D culture and under stimulation with immune activator VIC-008. Finally, we tested anti-tumor effects of MSCs alone and in combination with VIC-008 and demonstrated the synergistic efficacy of the combination therapy. The highlights of accomplishments of this study are as follows:

**1) Successful generation of MSCs from mouse bone marrow and compact bone:** MSCs are heterogeneous population with different sources [18]. We isolated MSCs from compact bone. Most of the cells showed universe spindle like morphology (Fig. 1A). However, cytometric results demonstrated the existence of distinct phenotypic subsets in the MSC population (Fig. 1B, C). The cells highly express CD44, CD29, Sca-1, CD73 and CD106, and moderately express CD105 (Fig. 1B). Notably, CD90, which is a marker for distinguishing human MSCs, was expressed at low frequency in mouse CB-MSCs (Fig. 1B). This heterogeneous population also includes cells that express hematopoietic cell markers CD31, CD11b, CD45 and CD34 but not MHCII (Fig. 1C).



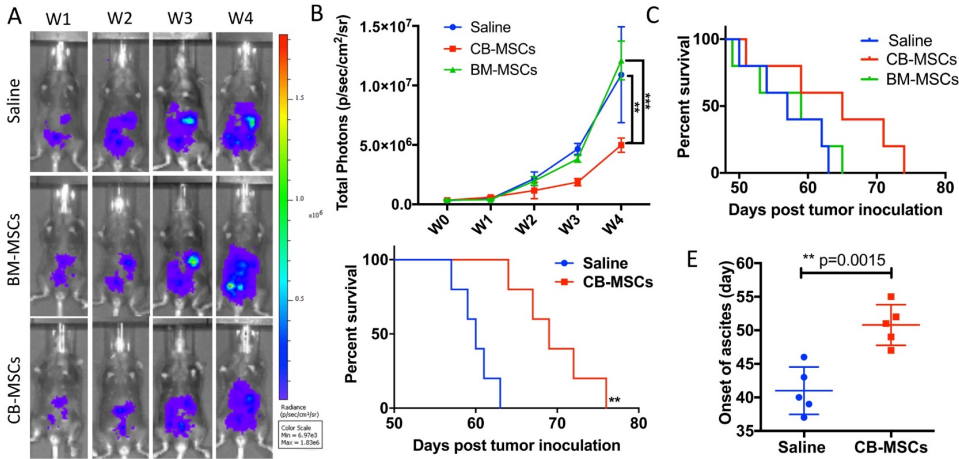
**Figure 1. Phenotypes of mouse CB-MSCs.** A. Morphology of primary CB-MSCs under microscopy. Upper: 10 x magnification, Lower: 20 x magnification. B. Representative cytometric dot plots. Phenotypic markers of CD29, CD44, Sca-1, CD73, CD105, CD106 and CD90 were stained to identify MSCs at passage 2. CD90 expressed very low on CB-MSCs. C. Negative markers of CD45, CD31, CD34 and CD11b were stained to help identify MSCs.

**2) CB-MSCs express lower CD90 and higher Sca-1 compared to BM-MSCs:** We also collected BM-MSCs and compared with CB-MSCs. BM-MSCs expressed less Sca-1 than CB-MSCs and Sca-1 expression was further decreased in cells of passage 5-6 in both MSCs (Fig. 2A, B). Within CD29<sup>+</sup>Sca-1<sup>+</sup> population, CD90 expression is still low in CB-MSCs, but higher in BM-MSCs (Fig. 2A, B). Sca-1<sup>-</sup> and Sca-1<sup>+</sup> populations showed distinct morphologies (Fig. 2C), with Sca-1<sup>-</sup> cells showing smaller and round shape but Sca-1<sup>+</sup> cells showing bigger and stretched cell shape. CD90<sup>+</sup> and CD90<sup>-</sup> cells didn't show obvious differences in morphology. Decreased expression of CD90 was reported to be associated with a loss of human MSC immunosuppressive activity [17], thus low CD90 expression observed in CB-MSCs might indicate a loss of immunosuppressive function, thereby granting tumor-targeting T cells to execute tumor killing.



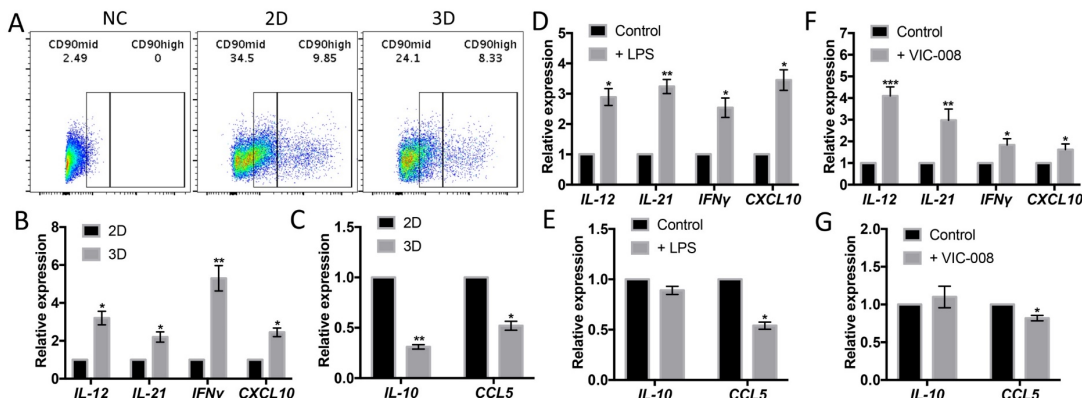
**Figure 2. CB-MSCs express higher Sca-1 and lower CD90 compared to BM-MSCs.** A. Representative cytometric dot plots of MSCs at passage 6. B. Percentage of Sca-1 and CD90 positive population in CB-MSCs and BM-MSCs. C. Microscopic images of sorted Sca-1 negative (Left) and positive cells (right), 20 x magnification.

**3) CD90<sup>low</sup> CB-MSCs inhibited tumor growth and prolonged survival:** In testing of anti-tumor effect of CB-MSCs and BM-MSCs in a mouse model of ID8 ovarian cancer, inhibition of tumor growth was observed in CB-MSCs group (Fig. 3A and B). BM-MSCs treatment showed no difference in benefit of survival compared to saline control with median survival of 59 and 60 days respectively. However, the survival benefit was modest when  $3 \times 10^6$  CB-MSCs were applied at week 0 (i.e. 1 week after tumor cell inoculation) and  $0.5 \times 10^6$  CB-MSCs applied at week 3 (Fig. 3C). When CB-MSCs was increased to  $3 \times 10^6$  for each treatment and applied every 3 weeks for twice (Fig. 3D), the mouse survival was further significantly improved with median survival from 65 days to 69 days. Meanwhile, the onset of ascites was significantly delayed (Fig. 3E). These data suggested that CB-MSCs might contain a different population that could slow tumor progression.



**Figure 3. CD90<sup>low</sup> CB-MSCs inhibited tumor growth and prolonged mouse survival in ovarian cancer model.** A. Representative bioluminescent images of CB-MSCs and BM-MSCs treated mice compared to saline treated group. MSCs were administered i.p. at week 0 and week 3 at the number of  $3 \times 10^6$  and  $0.5 \times 10^6$ . B. Quantified signal of luciferase-expressing ID8 tumor cells (n=5). C. Mice survival curve (n=5). D. Mouse survival when MSCs were administered i.p. at week 0 at the number of  $3 \times 10^6$  and the increased number of  $3 \times 10^6$  at week 3. E. The time of onset of ascites in saline control and CB-MSCs applied groups.

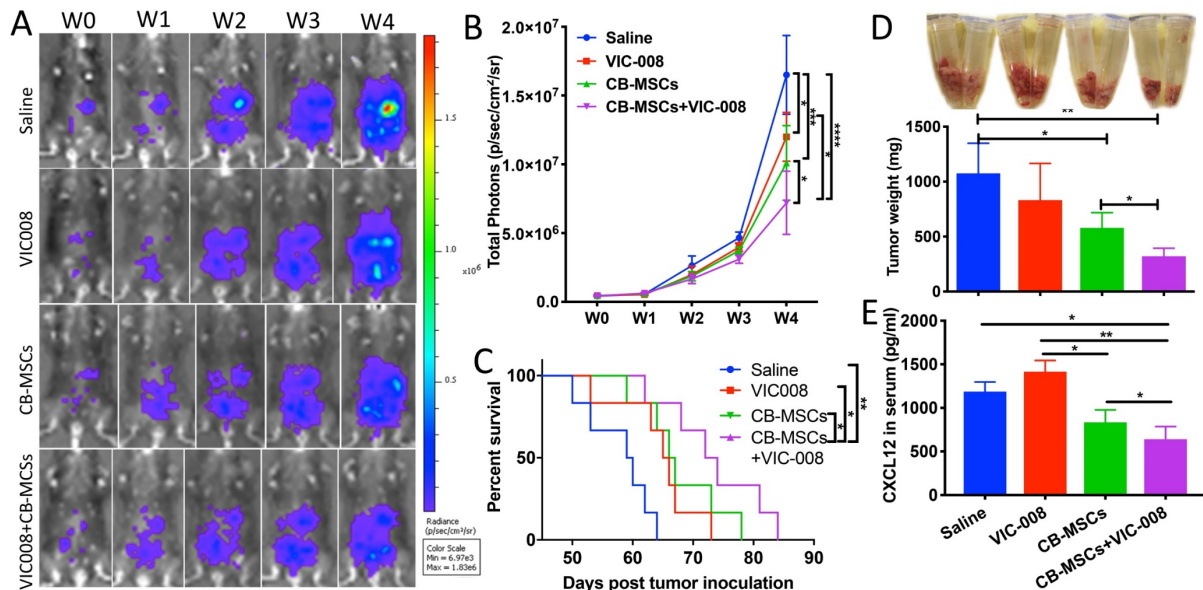
**4) Increased gene expressions of immune-activating cytokines and decreased gene expressions of immunosuppressive cytokines in CD90<sup>low</sup> CB-MSCs:** While CB-MSCs cultured in 3D condition, which is a simulation of cell growth *in vivo*, CD90<sup>mid</sup> and CD90<sup>high</sup> populations were both decreased (Fig. 4A). Gene expressions of immune-activating cytokines *IL-12*, *IL-21*, *IFN $\gamma$*  and *CXCL10* were significantly increased (Fig. 4B) whereas gene expressions immunosuppressive cytokines *IL-10* and *CCL5* were significantly decreased (Fig. 4B). We also check the gene expressions of CB-MSCs upon TLR-4 stimulation with LPS and found that LPS had the similar impact on cytokine profile on CB-MSCs as in 3D culture (Fig. 4D, E). VIC-008 contains immune-stimulating factor HSP70 that has been studied for ovarian cancer therapy in many ways [19-21]. By coculturing CB-MSCs with VIC-008, we found similar gene expression changes to TLR-4 stimulation, characterized by upregulation of *IL-12*, *IL-21*, *IFN $\gamma$*  and *CXCL10* but downregulation of *CCL5* (Fig. 4F, G). *IL-10* expression was not obviously changed under either TLR-4 or VIC-008 stimulation. These data further suggested that CB-MSCs might be stimulated and primed toward an immune-activating phenotype.





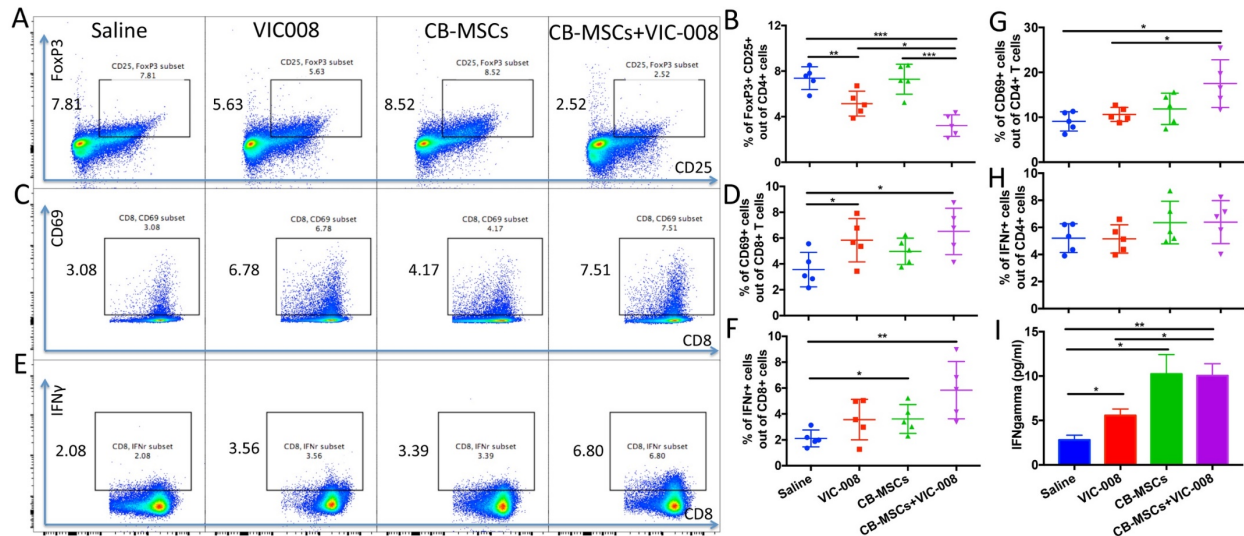
**Figure 4. CD90<sup>low</sup> CB-MSCs increased gene expression of immune-activating cytokines and decreased gene expression of immunosuppressive mediators.** A. CD90<sup>high</sup> and CD90<sup>mid</sup> populations from CB-MSCs were downregulated while cultured in 3D environment. B. Gene expression of *IL-12*, *IL-21*, *IFN $\gamma$*  and *CXCL10* in 2D and 3D culture quantitated by qRT-PCT. C. Gene expression of *IL-10* and *CCL5* in 2D and 3D culture quantitated by qRT-PCT. D. Gene expression of *IL-12*, *IL-21*, *IFN $\gamma$*  and *CXCL10* in TLR-4 stimulated CB-MSCs. E. Gene expression of *IL-10* and *CCL5* in TLR-4 stimulated CB-MSCs. F. Gene expression of *IL-12*, *IL-21*, *IFN $\gamma$*  and *CXCL10* in VIC-008 stimulated CB-MSCs. G. Gene expression of *IL-10* and *CCL5* in VIC-008 stimulated CB-MSCs. n=5.

**5) Combination of CD90<sup>low</sup> CB-MSCs with VIC-008 further improved anti-tumor efficacy:** Next, CB-MSCs were applied in combination with VIC-008 for the treatment of ovarian cancer in a mouse model. The results showed that CB-MSCs or VIC-008 alone significantly inhibited tumor growth (Fig. 5A, B) and extended animal survival (Fig. 5C). The combination treatment significantly suppressed tumor growth and prolonged mouse survival to a median survival of 73 days in comparison to CB-MSCs or VIC-008 alone with median survival of 67 days and 66 days, respectively (Fig. 5A-C). In another set of experiment, we sacrificed the mice 7 weeks post treatment and collected tumor tissues. We weighed tumor mass and found CB-MSCs alone and the combination therapy significantly controlled tumor mass compared to saline control treatment (Fig. 5D). We also found lowest amount of CXCL12 in the serum of combination treatment group (Fig. 5E), which is in line with the previous finding that CXCL12 levels in serum are correlated with ovarian cancer prognosis [22]. VIC-008 monotherapy showed limited effects on tumor mass control and CXCL12 expression. These data suggested the synergistic anti-tumor efficacy of combination therapy.



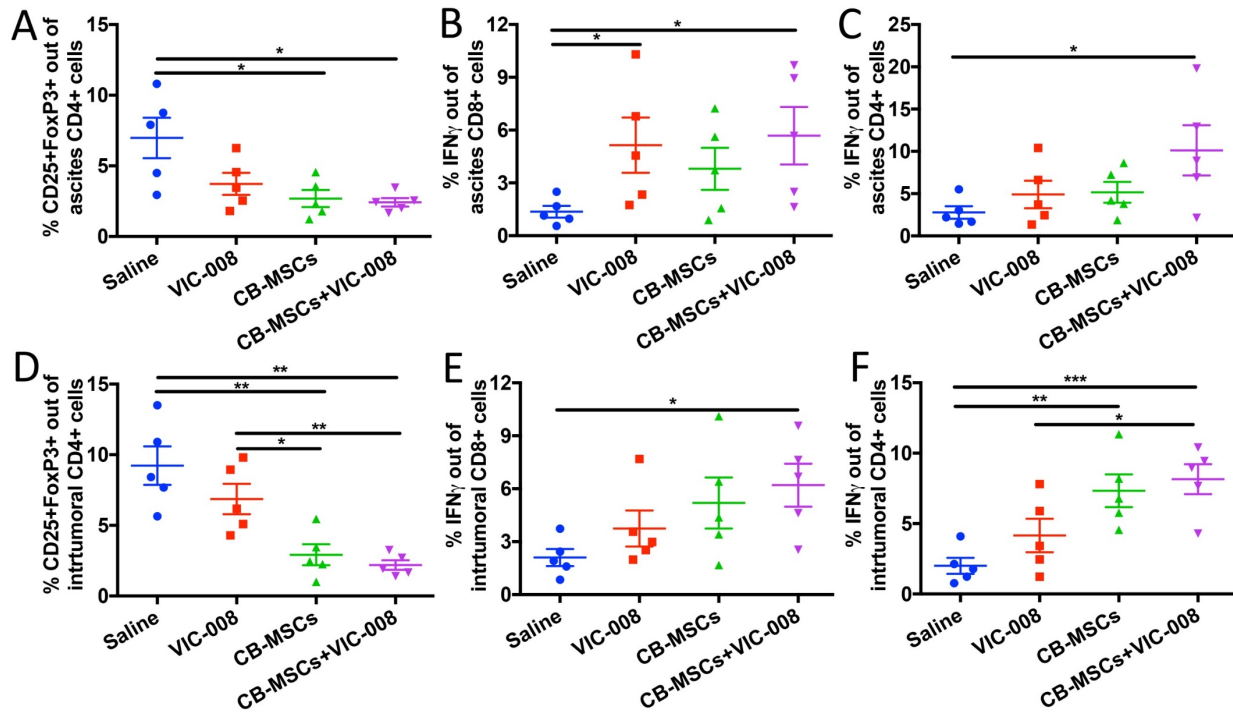
**Figure 5. Combination of CD90<sup>low</sup> CB-MSCs with VIC-008 further improved anti-tumor efficacy.** A. Representative bioluminescent images of different treatment groups. B. Quantification signal of luciferase-expressing ID8 tumor (n=6). C. Mice survival curve (n=6). D. Tumor weight at week 7 post tumor inoculation n=5. E. Quantification of CXCL12 in the blood serum by ELISA. n=5.

**6) Combination therapy reduced Treg cells and activated CD8 T cells in splenocytes:** We further investigated immune responses in spleen from tumor-bearing mice at week 7 post treatment. The results showed that MSCs combined with VIC-008 significantly decreased the proportion of CD4<sup>+</sup>CD25<sup>+</sup>FoxP3<sup>+</sup> Treg cells. VIC-008 alone also downregulated the CD4<sup>+</sup>CD25<sup>+</sup>FoxP3<sup>+</sup> Treg cells but not CB-MSCs monotherapy (Fig. 6A, B). CD8<sup>+</sup> T cell activation marker CD69 was highly expressed on CD8<sup>+</sup> T cells in the combination therapy group (Fig. 6C, D). IFN $\gamma$ <sup>+</sup>CD8<sup>+</sup> T cell population was significantly increased in both CB-MSC monotherapy and combination treatment groups (Fig. 6E, F). In combination therapy group, CD4<sup>+</sup> T cells showed significantly increased CD69 expression and slightly increased IFN $\gamma$  expression (Fig. 6G, H). We cocultured isolated splenocyte with mesothelin peptides and found that VIC-008 moderately increased IFN $\gamma$  in the supernatant; but there was a higher level of IFN $\gamma$  in the supernatant in CB-MSCs applied groups (Fig. 6I).



**Figure 6. Combination therapy reduced Treg cells and activated CD8<sup>+</sup> T cells and in splenocytes.** A, B. Representative cytometric dot plots and quantification of CD4<sup>+</sup>CD25<sup>+</sup>FoxP3<sup>+</sup> Treg cells. C, D. Representative cytometric dot plots and quantification of CD8<sup>+</sup>CD69<sup>+</sup> T cells. E, F. Representative cytometric dot plots and quantification of CD8<sup>+</sup>IFN $\gamma$ <sup>+</sup> T cells. G. Percentage of CD4<sup>+</sup>CD69<sup>+</sup> cells. H. Percentage of CD4<sup>+</sup>IFN $\gamma$ <sup>+</sup> T cells. I. Quantification of IFN $\gamma$  in the supernatant of cultured splenocytes after stimulation by mesothelin peptides by ELISA (n=5).

**7) Combination therapy reduced Treg cells and activated CD8 T cells in the tumor microenvironment:** We also collected ascites and tumor tissue to profile immune responses therein. Treg cells were significantly decreased in CB-MSC monotherapy and combination treatment groups (Fig. 7A, D). Activated CD8<sup>+</sup>IFN $\gamma$ <sup>+</sup> T cells were significantly increased in VIC-008 and combination groups in ascites (Fig. 7B). In tumor, CD8<sup>+</sup>IFN $\gamma$ <sup>+</sup> cells were significantly increased in combination group only (Fig. 7E). CD4<sup>+</sup> IFN $\gamma$ <sup>+</sup> T cells were significantly increased in the combination group in ascites (Fig. 7C). CD4<sup>+</sup>IFN $\gamma$ <sup>+</sup> T cells were elevated in tumor in both CB-MSC monotherapy and combination treatment groups (Fig. 7F). Taken together, these data suggested that CB-MSCs greatly contributed to the immunotherapeutic efficacy.



**Figure 7. Combination therapy decreased Treg cells and increased CD8 activation in tumor environment.** A. Quantification of CD4<sup>+</sup>CD25<sup>+</sup>FoxP3<sup>+</sup> Treg cells in ascites. B. Quantification of CD8<sup>+</sup>IFN $\gamma$ <sup>+</sup> cells in ascites. C. Quantification of CD4<sup>+</sup>IFN $\gamma$ <sup>+</sup> cells in ascites. D. Quantification of intratumoral CD4<sup>+</sup>CD25<sup>+</sup>FoxP3<sup>+</sup> Treg cells. E. Quantification of intratumoral CD8<sup>+</sup>IFN $\gamma$ <sup>+</sup> T cells. C. Quantification of intratumoral CD4<sup>+</sup>IFN $\gamma$ <sup>+</sup> T cells.

**What opportunities for training and professional development has the project provided?**

Nothing to Report.

**How were these results disseminated to communities of interest?**

Nothing to Report.

**What do you plan to do during the next reporting period to accomplish the goals?**

In the next reporting period, all the further studies described in the original application remain essentially unchanged. We will focus on the test of the hypothesis that CD90<sup>low</sup> MSCs loaded into GMs improve animal survival and reduce tumor growth while increasing anti-tumor immunity and decreasing intratumoral inflammation, including (a) **Evaluation of the effects of CD90<sup>low</sup> MSCs delivered by GMs on mouse survival and tumor progression in a syngeneic murine model of ovarian cancer.** Saline control group, GMs group, CD90<sup>low</sup> MSCs group, and GM-MSCs group will be applied to *in vivo* treatment experiments. Tumor-bearing mice in each group will be treated i.p. one week post tumor cell implantation and three weeks later. Bioluminescent imaging will be applied to observe tumor size every week. MSC engraftment will be observed by using wild-type tumor cell and luciferase-expressing MSCs. Mouse survival and tumor progression will be recorded. Mice weighing >35 g as a result of tumor growth and/or

with severe ascites will be euthanized. **(b) Quantitation of T-cell responses, memory T cells and regulatory T cells in circulating blood, spleen, lymph node and tumor microenvironment upon treatment with CD90<sup>low</sup> MSCs alone or GM-MSCs in murine model of ovarian cancer.** Splenocytes, draining lymph node lymphocytes and TILs from the mice will be harvested. The cells will be stained with multiple fluorophore-conjugated antibodies and quantitated of subpopulations including CD3<sup>+</sup>CD4<sup>+</sup> T cells, CD3<sup>+</sup>CD8<sup>+</sup> T cells, CD3<sup>+</sup>CD4<sup>+</sup>CD25<sup>+</sup>FOXP3<sup>+</sup> Tregs, and CD62L<sup>+</sup>CD127<sup>+</sup> memory T cell [23]. We will examine Ki-67 and T-bet expression on T cells by flow cytometry to investigate T cell proliferation (Fortessa-X20, BD Biosciences). Tumor tissue will be stained by IF for CD3, CD8, and FoxP3 to quantitate intratumoral TIL and Treg infiltration using confocal microscopy [24]. Tumor cell apoptosis will be quantified for apoptosis using TUNEL staining (Cell Death Detection Kit). **(c) Quantitation of MDSCs, TAMs and DCs in circulating blood, spleen, lymph node, blood and tumor microenvironment upon treatment with CD90<sup>low</sup> MSCs alone or GM-MSCs.** The contribution of myeloid origin stromal cells, including myeloid-derived suppressor cells (MDSCs) [25], tumor-associated M2 macrophages (TAMs) [26], and regulatory dendritic cells (DCs) [27], in the immune escape of tumor microenvironment has been intensively studied in the last decade. The infiltrated portions of these cells have great influence on tumor progression [28, 29]. MSCs could interact with these cells [15, 30]. The study of these populations may help us understand the therapeutic mechanism. With the same strategy mentioned above, the collected cells from different tissues will be stained with CD45, CD11b, Gr-1, CD206, Arginase-1, Egr2, CD11c, and F4/80 for cytometric analysis to quantify the MDSCs, TAMs, DCs and progenitor monocyte populations [28, 31]. **(d) Evaluation of inflammatory cytokines in blood serum, ascites and tumor tissue and identification of potential biomarkers for therapeutic efficacy or prognosis.** We will use high through-put luminex technology to analyze multiple cytokines in different samples, specifically the pro-inflammatory factors TNF- $\alpha$ , IL-1 $\beta$ , IL-6, CCL2, CXCL12, MIF and VEGF and anti-inflammatory factors IL-10 and TGF- $\beta$ . For blood serum, we will detect the cytokines twice from tail vein blood serum 2 weeks and 4 weeks after the first treatment. Ascites and tumors will be collected when the mice are sacrificed. Tumors will be physically disaggregated and lysed for extraction of proteins. This study may also identify potential biomarkers for therapeutic efficacy and prognosis.

#### **4. Impact**

##### **What was the impact on the development of the principal discipline(s) of the project?**

In this study, we found the difference of CD90 expression in CB-MSCs and BM-MSCs and evaluated the anti-tumoral effects of unmodified cells in mouse model of ID8 ovarian cancer. Our data demonstrated the synergistic anti-tumoral efficacy by application of CB-MSCs combined with fusion protein VIC-008 and revealed mechanisms by which CB-MSCs modulates immunity alone and in combination with VIC-008. Taken together, our study for the first time identifies an anti-tumoral subtype of MSCs and provides new mechanistic insight into CB-MSC-mediated immunomodulation and highlight the enhanced antitumor efficacy of a cell therapy alone and in combination with a tumor antigen-targeted therapy in mouse ovarian cancer, which could be clinically relevant to patients with this disease.

##### **What was the impact on other disciplines?**

Nothing to Report.

**What was the impact on technology transfer?**

Nothing to Report.

**What was the impact on society beyond science and technology?**

The relevance of this work to the clinical setting is maximized by the fact that both active elements of this therapy can be accessed and approved for use in humans with cancer. If this study is successful, MSCs could be pushed to clinical study in a fresh cancer-targeting angle. This might be beneficial to treatment of not only ovarian cancer but also certain other types of cancers.

**5. Changes/Problems**

Nothing to Report.

**6. Products**

**Publications**

Yang Zeng, Binghao Li, Tao Li, Wei Liu, Chongzhao Ran, Richard T. Penson, Mark C. Poznansky, Yanan Du, **Huabiao Chen**. CD90low MSCs modulate intratumoral immunity to confer antitumor activity in a mouse model of ovarian cancer. *Oncotarget* 2019; 10:4479-4491.

**Presentations**

Yang Zeng, Tao Li, Mark Poznansky, **Huabiao Chen**. A new subtype of MSCs confers antitumor activity by modulating intratumoral immunity. Annual Meeting of American Association for Cancer Research, Atlanta, GA. 3/29 – 4/3, 2019 (Poster)

**7. Participants & Other Collaborating Organizations**

**What individuals have worked on the project?**

Huabiao Chen, MD, PhD

PI

Effort: 6 calendar months (no change), Salary is requested accordingly.

Yang Zeng, PhD

Co-Investigator

Effort: 3 calendar months, Salary is not requested from this project.

Tao Li, MSc

Graduate Student

Effort: 9 calendar months (no change), Salary is not requested from this project.

Ann E. Sluder, PhD

Project Manager

Effort: 0.4 calendar months (no change). Salary is requested accordingly.

**Has there been a change in the active other support of the PD/PI(s) or senior/key personnel since the last reporting period?**

Nothing to Report.

**What other organizations were involved as partners?**

Nothing to Report.

**8. Special Reporting Requirements**

**Collaborative Award:** Not applicable

**Guad Charts:** Not applicable

**9. References**

1. Nowak M, Glowacka E, Szpakowski M, Szylo K, Malinowski A, Kulig A, Tchorzewski H, Wilczynski J: **Proinflammatory and immunosuppressive serum, ascites and cyst fluid cytokines in patients with early and advanced ovarian cancer and benign ovarian tumors.** *Neuro Endocrinol Lett* 2010, **31**(3):375-383. <https://www.ncbi.nlm.nih.gov/pubmed/20588232>
2. Sun Z, Wang S, Zhao RC: **The roles of mesenchymal stem cells in tumor inflammatory microenvironment.** *J Hematol Oncol* 2014, **7**:14. <http://www.ncbi.nlm.nih.gov/pubmed/24502410>
3. Wang Y, Chen X, Cao W, Shi Y: **Plasticity of mesenchymal stem cells in immunomodulation: pathological and therapeutic implications.** *Nature immunology* 2014, **15**(11):1009-1016. <http://www.ncbi.nlm.nih.gov/pubmed/25329189>
4. Kim SM, Woo JS, Jeong CH, Ryu CH, Lim JY, Jeun SS: **Effective combination therapy for malignant glioma with TRAIL-secreting mesenchymal stem cells and lipoxygenase inhibitor MK886.** *Cancer Res* 2012, **72**(18):4807-4817. <https://www.ncbi.nlm.nih.gov/pubmed/22962275>
5. Mueller LP, Luetzkendorf J, Widder M, Nerger K, Caysa H, Mueller T: **TRAIL-transduced multipotent mesenchymal stromal cells (TRAIL-MSC) overcome TRAIL resistance in selected CRC cell lines in vitro and in vivo.** *Cancer Gene Ther* 2011, **18**(4):229-239. <https://www.ncbi.nlm.nih.gov/pubmed/21037557>
6. Kim SW, Kim SJ, Park SH, Yang HG, Kang MC, Choi YW, Kim SM, Jeun SS, Sung YC: **Complete regression of metastatic renal cell carcinoma by multiple injections of engineered mesenchymal stem cells expressing dodecameric TRAIL and HSV-TK.** *Clin Cancer Res* 2013, **19**(2):415-427. <https://www.ncbi.nlm.nih.gov/pubmed/23204131>
7. Moniri MR, Sun XY, Rayat J, Dai D, Ao Z, He Z, Verchere CB, Dai LJ, Warnock GL: **TRAIL-engineered pancreas-derived mesenchymal stem cells: characterization and cytotoxic effects on pancreatic cancer cells.** *Cancer Gene Ther* 2012, **19**(9):652-658. <https://www.ncbi.nlm.nih.gov/pubmed/22767216>
8. Lathrop MJ, Sage EK, Macura SL, Brooks EM, Cruz F, Bonenfant NR, Sokocevic D, MacPherson MB, Beuschel SL, Dunaway CW *et al*: **Antitumor effects of TRAIL-expressing mesenchymal stromal cells in a mouse xenograft model of human mesothelioma.** *Cancer Gene Ther* 2015, **22**(1):44-54. <https://www.ncbi.nlm.nih.gov/pubmed/25525034>

9. Sage EK, Kolluri KK, McNulty K, Lourenco Sda S, Kalber TL, Ordidge KL, Davies D, Gary Lee YC, Giangreco A, Janes SM: **Systemic but not topical TRAIL-expressing mesenchymal stem cells reduce tumour growth in malignant mesothelioma.** *Thorax* 2014, **69**(7):638-647.<https://www.ncbi.nlm.nih.gov/pubmed/24567297>
10. Smyth MJ, Ngiow SF, Ribas A, Teng MW: **Combination cancer immunotherapies tailored to the tumour microenvironment.** *Nat Rev Clin Oncol* 2016, **13**(3):143-158.<http://www.ncbi.nlm.nih.gov/pubmed/26598942>
11. Banchereau J, Palucka AK: **Dendritic cells as therapeutic vaccines against cancer.** *Nat Rev Immunol* 2005, **5**(4):296-306.<http://www.ncbi.nlm.nih.gov/pubmed/15803149>
12. Kelly RJ, Sharon E, Pastan I, Hassan R: **Mesothelin-targeted agents in clinical trials and in preclinical development.** *Mol Cancer Ther* 2012, **11**(3):517-525.<http://www.ncbi.nlm.nih.gov/pubmed/22351743>
13. Wang Y, Kelly CG, Karttunen JT, Whittall T, Lehner PJ, Duncan L, MacAry P, Younson JS, Singh M, Oehlmann W *et al*: **CD40 is a cellular receptor mediating mycobacterial heat shock protein 70 stimulation of CC-chemokines.** *Immunity* 2001, **15**(6):971-983.<http://www.ncbi.nlm.nih.gov/pubmed/11754818>
14. Floto RA, MacAry PA, Boname JM, Mien TS, Kampmann B, Hair JR, Huey OS, Houben EN, Pieters J, Day C *et al*: **Dendritic cell stimulation by mycobacterial Hsp70 is mediated through CCR5.** *Science* 2006, **314**(5798):454-458.<http://www.ncbi.nlm.nih.gov/pubmed/17053144>
15. Yuan J, Kashiwagi S, Reeves P, Nezivar J, Yang Y, Arrifin NH, Nguyen M, Jean-Mary G, Tong X, Uppal P *et al*: **A novel mycobacterial Hsp70-containing fusion protein targeting mesothelin augments antitumor immunity and prolongs survival in murine models of ovarian cancer and mesothelioma.** *J Hematol Oncol* 2014, **7**:15.<http://www.ncbi.nlm.nih.gov/pubmed/24565018>
16. Yang Zeng BL, Patrick Reeves, Chongzhao Ran, Zhao Liu, Mojgan Agha-Abbaslou, Jianping Yuan, Pierre Leblanc, Ann Sluder, Jeffrey Gelfand, Timothy Brauns, Mark Poznansky and Huabiao Chen: **Improved Antitumoral Efficacy of Mesothelin Targeted Immune Activating Fusion Protein in Murine Model of Ovarian Cancer.** *International Journal of Cancer and Clinical Research* 2016, **3**(3):051
17. Campioni D, Rizzo R, Stignani M, Melchiorri L, Ferrari L, Moretti S, Russo A, Bagnara GP, Bonsi L, Alviano F *et al*: **A decreased positivity for CD90 on human mesenchymal stromal cells (MSCs) is associated with a loss of immunosuppressive activity by MSCs.** *Cytometry B Clin Cytom* 2009, **76**(3):225-230.<http://www.ncbi.nlm.nih.gov/pubmed/18985728>
18. de Witte SF, Franquesa M, Baan CC, Hoogduijn MJ: **Toward Development of iMesenchymal Stem Cells for Immunomodulatory Therapy.** *Front Immunol* 2015, **6**:648.<http://www.ncbi.nlm.nih.gov/pubmed/26779185>
19. Langmar Z, Vlesko G: **[The potential role of heat shock proteins in the treatment of ovarian cancer].** *Orv Hetil* 2011, **152**(3):92-95.<http://www.ncbi.nlm.nih.gov/pubmed/21205608>
20. Brauns T, Leblanc P, Gelfand JA, Poznanski M: **Could mycobacterial Hsp70-containing fusion protein lead the way to an affordable therapeutic cancer vaccine?** *Expert review of vaccines* 2015, **14**(3):435-446.<http://www.ncbi.nlm.nih.gov/pubmed/25496347>

21. Milani V, Noessner E, Ghose S, Kuppner M, Ahrens B, Scharner A, Gastpar R, Issels RD: **Heat shock protein 70: role in antigen presentation and immune stimulation.** *Int J Hyperthermia* 2002, **18**(6):563-575.<http://www.ncbi.nlm.nih.gov/pubmed/12537755>
22. Salomonsson E, Stacer AC, Ehrlich A, Luker KE, Luker GD: **Imaging CXCL12-CXCR4 signaling in ovarian cancer therapy.** *PLoS One* 2013, **8**(1):e51500.<http://www.ncbi.nlm.nih.gov/pubmed/23372646>
23. Clark RA, Huang SJ, Murphy GF, Mollet IG, Hijnen D, Muthukuru M, Schanbacher CF, Edwards V, Miller DM, Kim JE *et al*: **Human squamous cell carcinomas evade the immune response by down-regulation of vascular E-selectin and recruitment of regulatory T cells.** *J Exp Med* 2008, **205**(10):2221-2234.<https://www.ncbi.nlm.nih.gov/pubmed/18794336>
24. Righi E, Kashiwagi S, Yuan J, Santosuosso M, Leblanc P, Ingraham R, Forbes B, Edelblute B, Collette B, Xing D *et al*: **CXCL12/CXCR4 blockade induces multimodal antitumor effects that prolong survival in an immunocompetent mouse model of ovarian cancer.** *Cancer Res* 2011, **71**(16):5522-5534.<https://www.ncbi.nlm.nih.gov/pubmed/21742774>
25. Gabrielovich DI, Ostrand-Rosenberg S, Bronte V: **Coordinated regulation of myeloid cells by tumours.** *Nat Rev Immunol* 2012, **12**(4):253-268.<http://www.ncbi.nlm.nih.gov/pubmed/22437938>
26. Sica A, Larghi P, Mancino A, Rubino L, Porta C, Totaro MG, Rimoldi M, Biswas SK, Allavena P, Mantovani A: **Macrophage polarization in tumour progression.** *Semin Cancer Biol* 2008, **18**(5):349-355.<http://www.ncbi.nlm.nih.gov/pubmed/18467122>
27. Conejo-Garcia JR, Rutkowski MR, Cubillos-Ruiz JR: **State-of-the-art of regulatory dendritic cells in cancer.** *Pharmacol Ther* 2016, **164**:97-104.<http://www.ncbi.nlm.nih.gov/pubmed/27118338>
28. Umansky V, Sevko A: **Tumor microenvironment and myeloid-derived suppressor cells.** *Cancer Microenviron* 2013, **6**(2):169-177.<http://www.ncbi.nlm.nih.gov/pubmed/23242672>
29. Pyzer AR, Cole L, Rosenblatt J, Avigan DE: **Myeloid-derived suppressor cells as effectors of immune suppression in cancer.** *Int J Cancer* 2016.<http://www.ncbi.nlm.nih.gov/pubmed/27299510>
30. Bianchi G, Borgonovo G, Pistoia V, Raffaghello L: **Immunosuppressive cells and tumour microenvironment: focus on mesenchymal stem cells and myeloid derived suppressor cells.** *Histol Histopathol* 2011, **26**(7):941-951.<http://www.ncbi.nlm.nih.gov/pubmed/21630223>
31. Jablonski KA, Amici SA, Webb LM, Ruiz-Rosado Jde D, Popovich PG, Partida-Sanchez S, Guerau-de-Arellano M: **Novel Markers to Delineate Murine M1 and M2 Macrophages.** *PLoS One* 2015, **10**(12):e0145342.<http://www.ncbi.nlm.nih.gov/pubmed/26699615>

## 10. Appendices

**Published journal article:** Yang Zeng, Binghao Li, Tao Li, Wei Liu, Chongzhao Ran, Richard T. Penson, Mark C. Poznansky, Yanan Du, **Huabiao Chen**. CD90low MSCs modulate intratumoral immunity to confer antitumor activity in a mouse model of ovarian cancer. *Oncotarget* 2019; 10:4479-4491.



## CD90<sup>low</sup> MSCs modulate intratumoral immunity to confer antitumor activity in a mouse model of ovarian cancer

Yang Zeng<sup>1,5</sup>, Binghao Li<sup>1,6</sup>, Tao Li<sup>1,7</sup>, Wei Liu<sup>2</sup>, Chongzhao Ran<sup>3</sup>, Richard T. Penson<sup>4</sup>, Mark C. Poznansky<sup>1</sup>, Yanan Du<sup>2</sup> and Huabiao Chen<sup>1</sup>

<sup>1</sup>Vaccine and Immunotherapy Center, Massachusetts General Hospital and Harvard Medical School, Boston 02114, USA

<sup>2</sup>Department of Biomedical Engineering, School of Medicine, Collaborative Innovation Center for Diagnosis and Treatment of Infectious Diseases, Tsinghua University, Beijing 100084, China

<sup>3</sup>Martinos Center for Biomedical Imaging, Department of Radiology, Massachusetts General Hospital and Harvard Medical School, Charlestown 02129, USA

<sup>4</sup>Medical Gynecologic Oncology, Gillette Center for Women's Cancers, Massachusetts General Hospital and Harvard Medical School, Boston 02114, USA

<sup>5</sup>Department of Cancer Biology, Dana Farber Cancer Institute, Boston 02215, USA

<sup>6</sup>Department of Orthopaedics, The Second Affiliated Hospital of Zhejiang University School of Medicine, Hangzhou, Zhejiang 310009, China

<sup>7</sup>Jiangsu Key Laboratory of Clinical Laboratory Medicine, School of Medicine, Jiangsu University, Zhenjiang, Jiangsu 212013, China

**Correspondence to:** Huabiao Chen, **email:** Huabiao.chen@mgh.harvard.edu

**Keywords:** mesenchymal stem cells; CD90; ovarian cancer; immunotherapy

**Received:** May 13, 2019

**Accepted:** June 19, 2019

**Published:** July 09, 2019

**Copyright:** Zeng et al. This is an open-access article distributed under the terms of the Creative Commons Attribution License 3.0 (CC BY 3.0), which permits unrestricted use, distribution, and reproduction in any medium, provided the original author and source are credited.

### ABSTRACT

**Both anti-tumoral and pro-tumoral effects of mesenchymal stem cells (MSCs) in preclinical treatment of ovarian cancer have been controversially demonstrated. In this study, we profiled the phenotypes of mouse compact bone-derived MSCs (CB-MSCs) and bone marrow-derived MSCs (BM-MSCs) and found that CB-MSCs expressed lower CD90 compared to BM-MSCs. We examined gene expression of immune regulating cytokines of CB-MSCs in 2D and 3D culture and under stimulation with TLR4 agonist LPS or immune activator VIC-008. Our data showed that when CB-MSCs were cultured in simulated *in vivo* 3D condition, CD90 expression was further decreased. Moreover, gene expressions of immune activating cytokines *IL-12*, *IL-21*, *IFN $\gamma$*  and a pro-inflammatory cytokine *CXCL10* in CB-MSCs were increased in 3D culture whereas gene expression of anti-inflammatory cytokines *IL-10* and *CCL5* were downregulated. Stimulation of CB-MSCs by LPS or VIC-008 presented similar profile of the cytokine gene expressions to that in 3D culture which might benefit the anti-tumor efficacy of CD90<sup>low</sup> MSCs. The anti-tumor effects of CD90<sup>low</sup> CB-MSCs alone or in combination with VIC-008 were evaluated in a syngeneic orthotopic mouse model of ovarian cancer. Treatment that combines CB-MSCs and VIC-008 significantly decreased tumor growth and prolonged mouse survival. This was associated with the increase of activated anti-tumoral CD4<sup>+</sup> and CD8<sup>+</sup> T cells and the decrease of Treg cells in the tumor microenvironment. Taken together, our study demonstrates the synergistic anti-tumoral efficacy by application of CB-MSCs combined with immune activator VIC-008 and provides new insight into CD90<sup>low</sup> MSCs as a new anti-tumor arsenal.**

### INTRODUCTION

Ovarian cancer is a life-threatening tumor in women as its diagnosis often occurs at a late stage [1]. In

recent years, immunotherapy as adjuvant to surgery and chemotherapy has been broadly investigated in ovarian cancer as a way to reduce tumor recurrence and improve the survival rate [2]. Bone marrow derived mesenchymal

stem/stromal cells (BM-MSCs) have also been studied for cancer therapy, due to their allogeneic availability, tropism for solid tumors, immune privilege and reliable *in vitro* amplification [3]. In the context of ovarian cancer, MSCs have been deployed as genetically engineered delivery vehicles, where they may highly express IL-2, IL-12, IL-15, IL-21, IFN- $\beta$  or the suicide gene [4–6]. However, gene engineering has come along with safety concerns. Unmodified MSCs are seldom used to treat ovarian cancer since several studies have suggested that MSCs might promote tumor growth [7, 8]. As immunomodulatory cells, MSCs were mostly characterized with immunosuppressive properties. However, more emerging studies demonstrated the capability of MSCs in keeping immunity in balance [9]. In some circumstances, they could even promote immune priming. For instance, MSCs could be induced to act as antigen-presenting cells (APCs) [10, 11]. Approaches for polarizing MSCs into pro-inflammatory and anti-tumorigenic MSC1 or immunosuppressive and pro-tumorigenic MSC2 by TLR4 or TLR3 agonists were also reported [12, 13]. MSCs supported the survival of B cells through undetermined factors [14] and prevented T cells apoptosis through the secretion of IL-7 [15]. These studies suggest that MSCs may have the anti-tumor potential in tumor immunotherapy.

Ovarian cancer cells can form a highly inflammatory microenvironment contributing to the malignancy of the tumor. In particular, several pro-inflammatory cytokines such as TNF- $\alpha$ , IL-1 $\beta$ , and IL-6 produced by ovarian tumor cells or activated immune cells, have been shown to increase tumor growth and influence clinical disease outcome and prognosis [16]. MSCs have dominant advantages in inflammatory control and balance [9, 17]. Previous studies applied genetically engineered TRAIL-secreting MSCs to modulate inflammation and target tumors and showed significant effects in control of tumor burden, metastasis and tumor-associated inflammation in malignant glioma [18], colorectal carcinoma [19], metastatic renal cell carcinoma [20], pancreatic cancer [21] and mesothelioma [22, 23]. In the treatment of malignant mesothelioma, intraperitoneal administration of either MSCs alone or MSCs-TRAIL decreased the peritoneal inflammation by reducing levels of inflammatory cytokines IL-1 $\alpha$ , CCL2 and TNF- $\alpha$  [22], indicating the inflammatory downregulation by MSCs in tumor microenvironment may also be applicable to the treatment of ovarian cancer.

The development of cancer immunotherapies favors combination strategies for enhancing APC function and enhancing T cell effector activity while eliminating immunosuppression [24]. Tumor-specific antigen targeting dendritic cell (DC) vaccines represent the most promising approach, which can orchestrate all of the elements of the immune system for cancer therapy [25]. Mesothelin is a tumor antigen that is highly expressed on the surface of common epithelial cancers including ovarian cancer

[26]. Mesothelin expression appears to drive tumor growth and metastasis and is negatively associated with survival in ovarian cancer, which indicates it could be a therapeutic target. Previously, we developed a fusion protein consisting of anti-mesothelin scFv genetically fused with *Mycobacterium tuberculosis* heat shock protein 70 (Hsp70) (designated as VIC-008). The anti-mesothelin scFv provides tumor-specific targeting while Hsp70 facilitates both innate and adaptive immune responses toward the tumor. Immune activation by VIC-008 includes activating monocytes and DCs to produce CC-chemokines for attraction of antigen-processing and presenting DCs, macrophages, and effector T and B cells; enhancing DC aggregation and maturation; stimulating phagocytosis of distressed and foreign cells; and inducing cytotoxic activity of natural killer cells [27, 28]. Previous study has shown that VIC-008 primes an adaptive, tumor-specific CD8<sup>+</sup> T cell immune response that is an absolute requirement for tumor control and survival prolongation in BR5FVB1 ovarian cancer mouse model [29]. The same finding was observed in a syngeneic orthotopic mouse model of ID8 ovarian cancer [30]. Although the fusion protein significantly enhanced survival of the ovarian tumor-bearing mice, it did not result in long-term remission. Our previous study also revealed that the increase of VIC-008 doses could further benefit mouse survival but could not delay onset of ascites and reduce ascites production, which may be the consequence of highly inflammatory microenvironment of malignant tumor.

To gain a better understanding of the potential for MSCs in cancer immunotherapy, in this study, we profiled the phenotypes of mouse compact bone derived MSCs (CB-MSCs) and found that CB-MSCs are different from bone marrow derived MSCs (BM-MSCs) in CD90 expression. Decreased expression of CD90 was reported to be associated with a loss of human MSC immunosuppressive activity [31], thus low CD90 expression observed in CB-MSCs might indicate a loss of immunosuppressive function, which might be helpful in the cancer immunotherapy. We further examined gene expression of immune regulating cytokines of CB-MSCs in 2D and 3D culture and under stimulation with VIC-008. Finally, we tested anti-tumor effects of unmodified CB-MSCs alone and in combination with VIC-008 and demonstrated the synergistic efficacy of the combination therapy.

## RESULTS

### CB-MSCs express lower CD90 and higher Sca-1 compared to BM-MSCs

MSCs are heterogeneous population with different sources [32]. We isolated MSCs from compact bone. Most of the cells showed universe spindle like morphology

(Figure 1A). However, cytometric results demonstrated the existence of distinct phenotypic subsets in the MSC population (Figure 1B, 1C). The cells highly express CD44, CD29, Sca-1, CD73 and CD106, and moderately express CD105 (Figure 1B). Notably, CD90, which is a marker for distinguishing human MSCs, was expressed at low frequency in mouse CB-MSCs (Figure 1B). This heterogeneous population also includes cells that express hematopoietic cell markers CD31, CD11b, CD45 and CD34 (Figure 1C). MHCII is not expressed (data not shown). We also collected BM-MSCs and compared with CB-MSCs. BM-MSCs expressed less Sca-1 than CB-MSCs and Sca-1 expression was further decreased in cells of passage 5–6 in both MSCs (Figure 2A, 2B). Within CD29<sup>+</sup>Sca-1<sup>+</sup> population, CD90 expression is still low in CB-MSCs, but higher in BM-MSCs (Figure 2A, 2B). Sca-1<sup>-</sup> and Sca-1<sup>+</sup> populations showed distinct morphologies (Figure 2C), with Sca-1<sup>-</sup> cells showing smaller and round shape but Sca-1<sup>+</sup> cells showing bigger and stretched cell shape. CD90<sup>+</sup> and CD90<sup>-</sup> cells didn't show obvious differences in morphology (data not shown). Decreased expression of CD90 was reported to be associated with a loss of human MSC immunosuppressive activity [31], thus low CD90 expression observed in CB-MSCs might indicate a loss of immunosuppressive function, thereby granting tumor-targeting T cells to execute tumor killing.

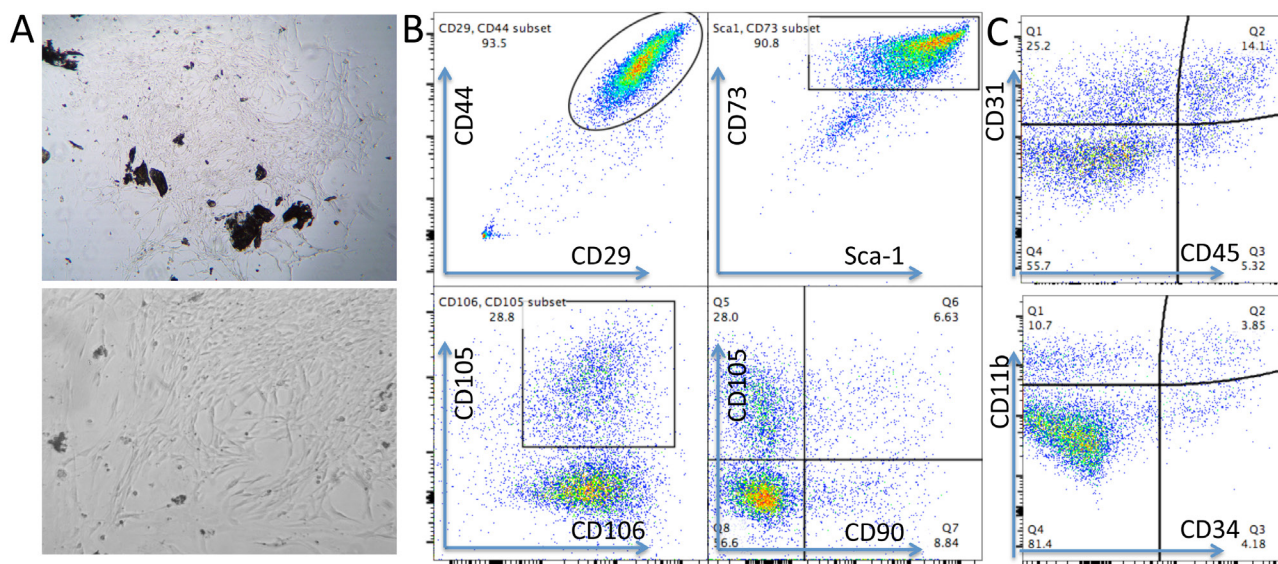
### CD90<sup>low</sup> CB-MSCs inhibited tumor growth and prolonged survival

In testing of anti-tumor effect of CB-MSCs and BM-MSCs in a mouse model of ID8 ovarian cancer, inhibition of tumor growth was observed in CB-MSCs group (Figure

3A and 3B). BM-MSCs treatment showed no difference in benefit of survival compared to saline control with median survival of 59 and 60 days respectively. However, the survival benefit was modest when  $3 \times 10^6$  CB-MSCs were applied at week 0 (i.e. 1 week after tumor cell inoculation) and  $0.5 \times 10^6$  CB-MSCs applied at week 3 (Figure 3C). When CB-MSCs was increased to  $3 \times 10^6$  for each treatment and applied every 3 weeks for twice (Figure 3D), the mouse survival was further significantly improved with median survival from 65 days to 69 days. Meanwhile, the onset of ascites was significantly delayed (Figure 3E). These data suggested that CB-MSCs might contain a different population that could slow tumor progression.

### Increased gene expressions of immune-activating cytokines and decreased gene expressions of immunosuppressive cytokines in CD90<sup>low</sup> CB-MSCs

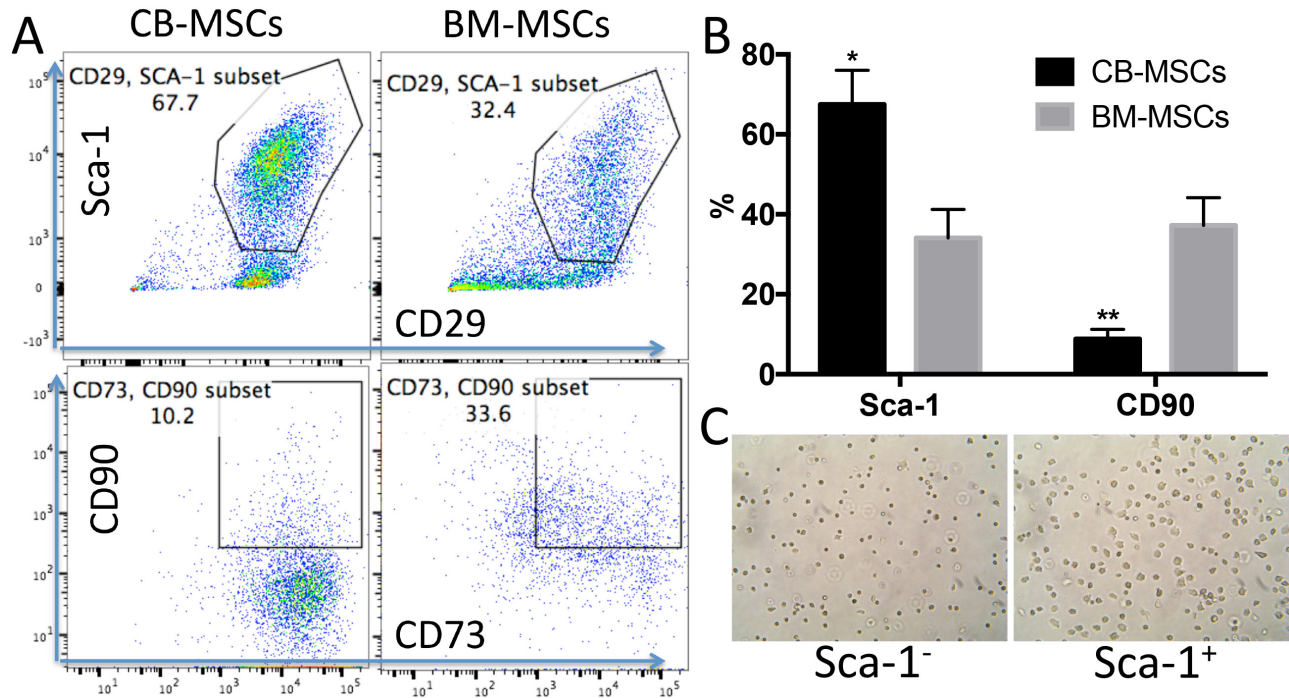
While CB-MSCs cultured in 3D condition, which is a simulation of cell growth *in vivo*, CD90<sup>mid</sup> and CD90<sup>high</sup> populations were both decreased (Figure 4A). Gene expressions of immune-activating cytokines *IL-12*, *IL-21*, *IFN $\gamma$*  and *CXCL10* were significantly increased (Figure 4B) whereas gene expressions immunosuppressive cytokines *IL-10* and *CCL5* were significantly decreased (Figure 4C). We also check the gene expressions of CB-MSCs upon TLR-4 stimulation with LPS and found that LPS had the similar impact on cytokine profile on CB-MSCs as in 3D culture (Figure 4D, 4E). VIC-008 contains immune-stimulating factor HSP70 that has been studied for ovarian cancer therapy in many ways



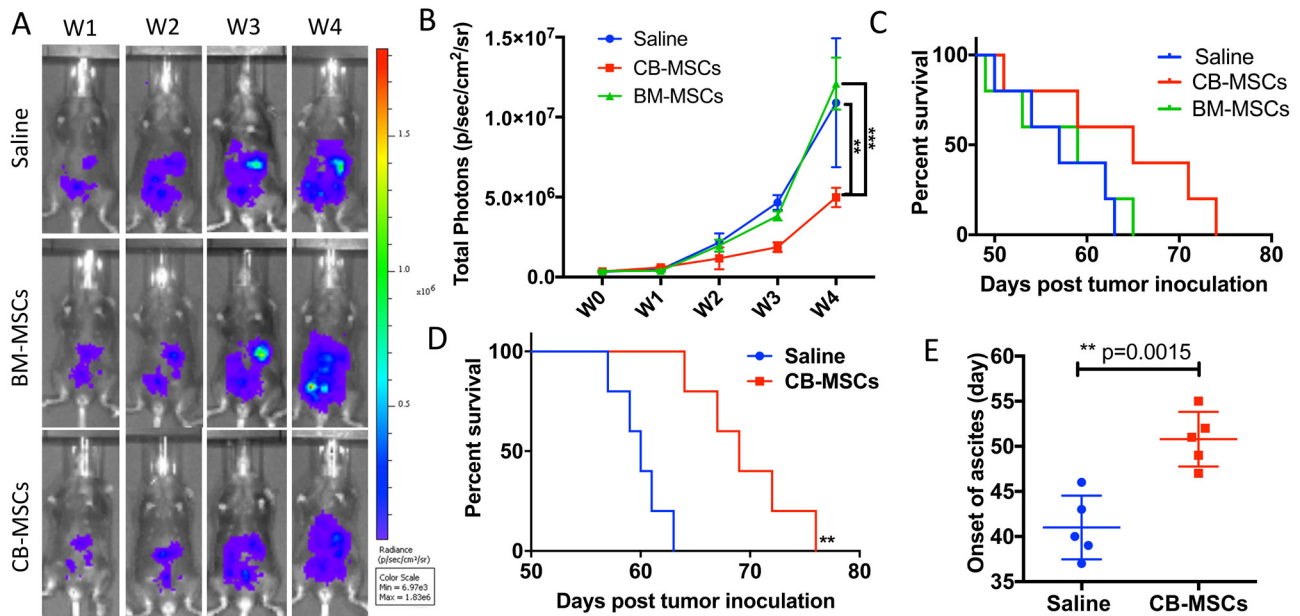
**Figure 1: Phenotypes of mouse CB-MSCs.** (A) Morphology of primary CB-MSCs under microscopy. Upper: 10 x magnification, Lower: 20 x magnification. (B) Representative cytometric dot plots. Phenotypic markers of CD29, CD44, Sca-1, CD73, CD105, CD106 and CD90 were stained to identify MSCs at passage 2. CD90 expressed very low on CB-MSCs. (C) Negative markers of CD45, CD31, CD34 and CD11b were stained to help identify MSCs.

[33–35]. By coculturing CB-MSCs with VIC-008, we found similar gene expression changes to TLR-4 stimulation, characterized by upregulation of *IL-12*, *IL-21*, *IFN $\gamma$*  and *CXCL10* but downregulation of *CCL5* (Figure

4F, 4G). *IL-10* expression was not obviously changed under either TLR-4 or VIC-008 stimulation. These data further suggested that CB-MSCs might be stimulated and primed toward an immune-activating phenotype.



**Figure 2: CB-MSCs express higher Sca-1 and lower CD90 compared to BM-MSCs.** (A) Representative cytometric dot plots of MSCs at passage 6. (B) Percentage of Sca-1 and CD90 positive population in CB-MSCs and BM-MSCs. (C) Microscopic images of sorted Sca-1 negative (Left) and positive cells (right), 20 x magnification.

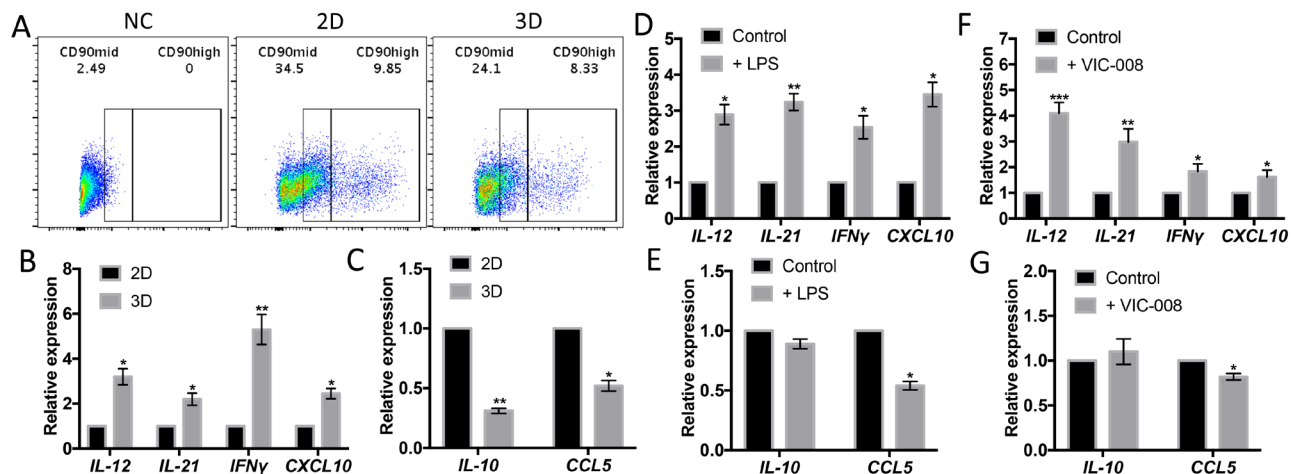


**Figure 3: CD90<sup>low</sup> CB-MSCs inhibited tumor growth and prolonged mouse survival in ovarian cancer model.** (A) Representative bioluminescent images of CB-MSCs and BM-MSCs treated mice compared to saline treated group. MSCs were administered i.p. at week 0 and week 3 at the number of  $3 \times 10^6$  and  $0.5 \times 10^6$ . (B) Quantified signal of luciferase-expressing ID8 tumor cells ( $n = 5$ ). (C) Mice survival curve ( $n = 5$ ). (D) Mouse survival when MSCs were administered i.p. at week 0 at the number of  $3 \times 10^6$  and the increased number of  $3 \times 10^6$  at week 3. (E) The time of onset of ascites in saline control and CB-MSCs applied groups.

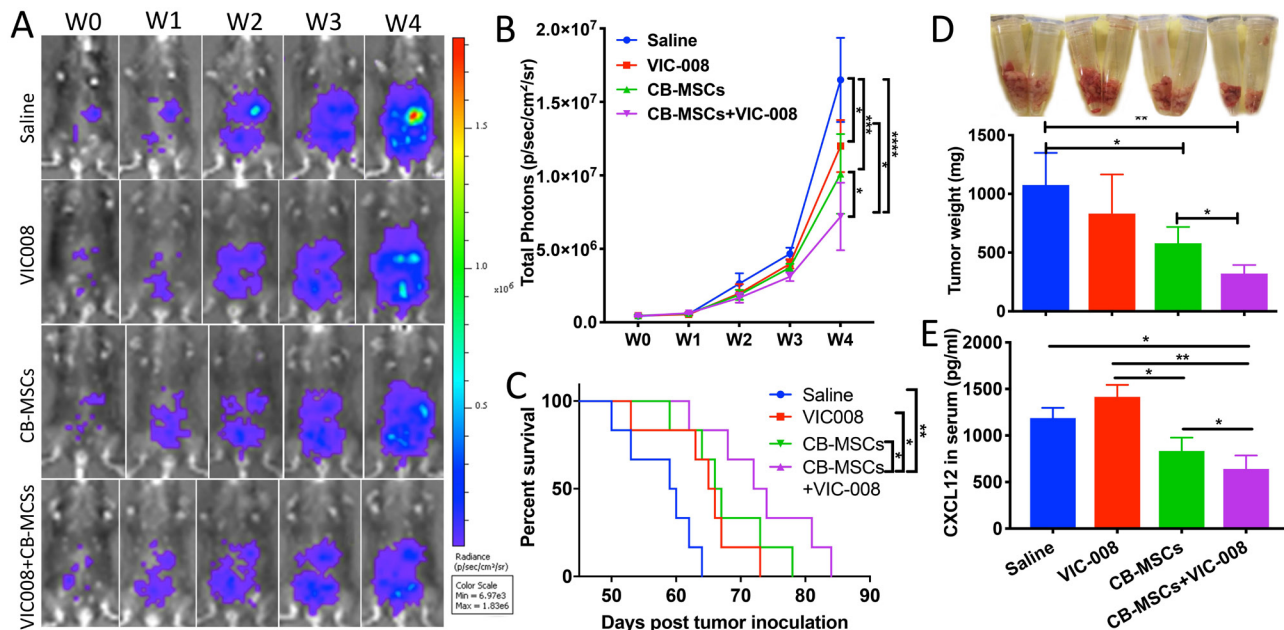
## Combination of CD90<sup>low</sup> CB-MSCs with VIC-008 further improved anti-tumor efficacy

Next, CB-MSCs were applied in combination with VIC-008 for the treatment of ovarian cancer in a mouse model. The results showed that CB-MSCs or VIC-008 alone significantly inhibited tumor growth (Figure 5A, 5B) and extended animal survival (Figure 5C). The

combination treatment significantly suppressed tumor growth and prolonged mouse survival to a median survival of 73 days in comparison to CB-MSCs or VIC-008 alone with median survival of 67 days and 66 days, respectively (Figure 5A–5C). In another set of experiment, we sacrificed the mice 7 weeks post treatment and collected tumor tissues. We weighed tumor mass and found CB-MSCs alone and the combination therapy significantly



**Figure 4: CD90<sup>low</sup> CB-MSCs increased gene expression of immune-activating cytokines and decreased gene expression of immunosuppressive mediators.** (A) CD90<sup>high</sup> and CD90<sup>mid</sup> populations from CB-MSCs were downregulated while cultured in 3D environment. (B) Gene expression of *IL-12*, *IL-21*, *IFN $\gamma$*  and *CXCL10* in 2D and 3D culture quantitated by qRT-PCT. (C) Gene expression of *IL-10* and *CCL5* in 2D and 3D culture quantitated by qRT-PCT. (D) Gene expression of *IL-12*, *IL-21*, *IFN $\gamma$*  and *CXCL10* in TLR-4 stimulated CB-MSCs. (E) Gene expression of *IL-10* and *CCL5* in TLR-4 stimulated CB-MSCs. (F) Gene expression of *IL-12*, *IL-21*, *IFN $\gamma$*  and *CXCL10* in VIC-008 stimulated CB-MSCs. (G) Gene expression of *IL-10* and *CCL5* in VIC-008 stimulated CB-MSCs.  $n = 5$ .



**Figure 5: Combination of CD90<sup>low</sup> CB-MSCs with VIC-008 further improved anti-tumor efficacy.** (A) Representative bioluminescent images of different treatment groups. (B) Quantification signal of luciferase-expressing ID8 tumor ( $n = 6$ ). (C) Mice survival curve ( $n = 6$ ). (D) Tumor weight at week 7 post tumor inoculation  $n = 5$ . (E) Quantification of CXCL12 in the blood serum by ELISA.  $n = 5$ .

controlled tumor mass compared to saline control treatment (Figure 5D). We also found lowest amount of CXCL12 in the serum of combination treatment group (Figure 5E), which is in line with the previous finding that CXCL12 levels in serum are correlated with ovarian cancer prognosis [36]. VIC-008 monotherapy showed limited effects on tumor mass control and CXCL12 expression. These data suggested the synergistic anti-tumor efficacy of combination therapy.

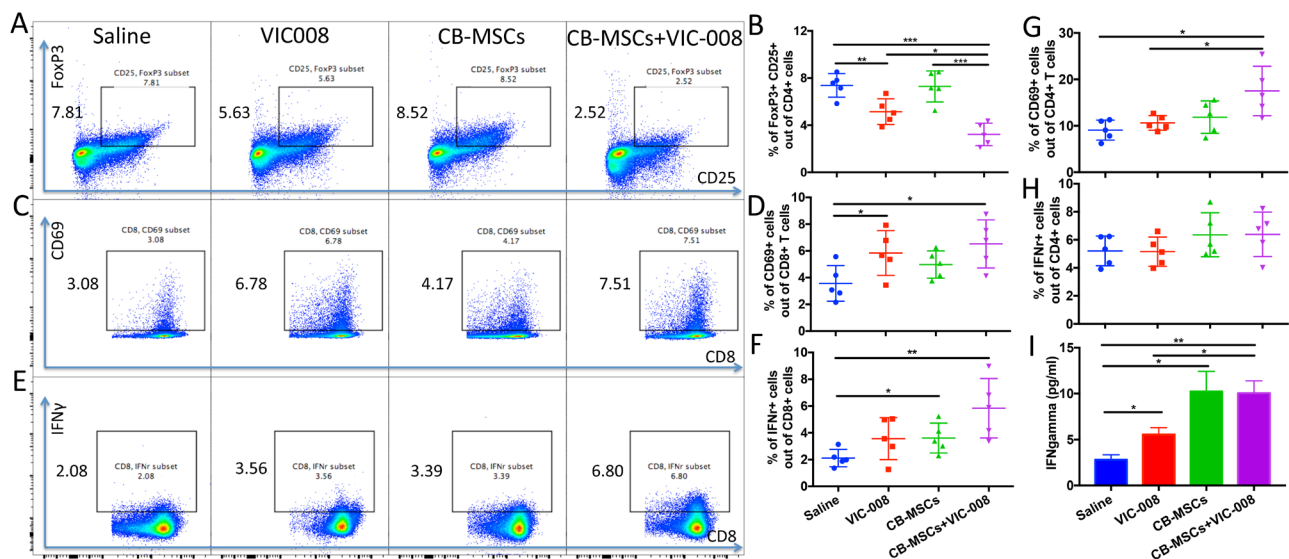
### Combination therapy reduced Treg cells and activated CD8 T cell both in splenocytes and tumor microenvironment

We further investigated immune responses in spleen from tumor-bearing mice at week 7 post treatment. The results showed that MSCs combined with VIC-008 significantly decreased the proportion of CD4<sup>+</sup>CD25<sup>+</sup>FoxP3<sup>+</sup> Treg cells. VIC-008 alone also downregulated the CD4<sup>+</sup>CD25<sup>+</sup>FoxP3<sup>+</sup> Treg cells but not CB-MSCs monotherapy (Figure 6A, 6B). CD8<sup>+</sup> T cell activation marker CD69 was highly expressed on CD8<sup>+</sup> T cells in the combination therapy group (Figure 6C, 6D). IFN $\gamma$ <sup>+</sup>CD8<sup>+</sup> T cell population was significantly increased in both CB-MSC monotherapy and combination treatment groups (Figure 6E, 6F). In combination therapy group, CD4<sup>+</sup> T cells showed significantly increased CD69 expression and slightly increased IFN $\gamma$  expression (Figure 6G, 6H). We cocultured isolated splenocyte with mesothelin peptides and found that VIC-008 moderately increased IFN $\gamma$  in the supernatant; but there was a higher level of IFN $\gamma$  in the supernatant in CB-MSCs applied groups (Figure 6I).

We also collected ascites and tumor tissue to profile immune responses therein. Treg cells were significantly decreased in CB-MSC monotherapy and combination treatment groups (Figure 7A, 7D). Activated CD8<sup>+</sup>IFN $\gamma$ <sup>+</sup> T cells were significantly increased in VIC-008 and combination groups in ascites (Figure 7B). In tumor, CD8<sup>+</sup>IFN $\gamma$ <sup>+</sup> cells were significantly increased in combination group only (Figure 7E). CD4<sup>+</sup> IFN $\gamma$ <sup>+</sup> T cells were significantly increased in the combination group in ascites (Figure 7C). CD4<sup>+</sup>IFN $\gamma$ <sup>+</sup>T cells were elevated in tumor in both CB-MSC monotherapy and combination treatment groups (Figure 7F). Taken together, these data suggested that CB-MSCs greatly contributed to the immunotherapeutic efficacy.

### DISCUSSION

Although it was reported that MSCs could differentiate into carcinoma-associated fibroblasts (CFA) and pericytes to support tumor growth [37], an unique population of MSCs might have different fate. In tissue regeneration study, it is generally believed that MSC-based therapy not only provides a source of cells with which to regenerate a tissue but also regulates inflammation and ‘empowers’ other cells to facilitate tissue repair by the MSC secretome [38]. Published studies have shown that the therapeutic effect of MSCs is mainly a result of immunomodulation and that this function is ‘licensed’ by inflammation [39]. This indicates that MSCs could have a universal crosstalk with the pro-inflammatory factors and anti-inflammatory factors in tumor microenvironment. The anti-tumor activity of MSCs in tumor models such



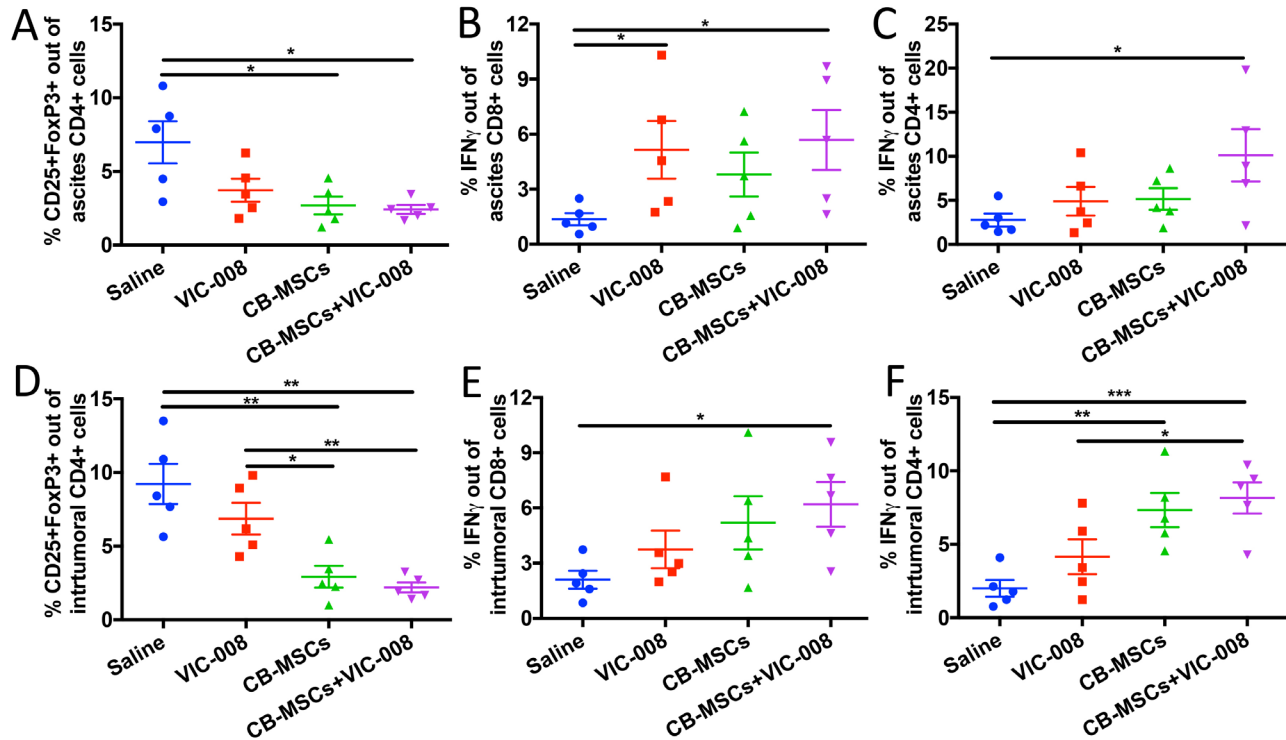
**Figure 6: Combination therapy reduced Treg cells and activated CD8<sup>+</sup> T cells and in splenocytes.** (A, B) Representative cytometric dot plots and quantification of CD4<sup>+</sup>CD25<sup>+</sup>FoxP3<sup>+</sup> Treg cells. (C, D) Representative cytometric dot plots and quantification of CD8<sup>+</sup>CD69<sup>+</sup> T cells. (E, F) Representative cytometric dot plots and quantification of CD8<sup>+</sup>IFN $\gamma$ <sup>+</sup> T cells. (G) Percentage of CD4<sup>+</sup>CD69<sup>+</sup> cells. (H) Percentage of CD4<sup>+</sup>IFN $\gamma$ <sup>+</sup> T cells. (I) Quantification of IFN $\gamma$  in the supernatant of cultured splenocytes after stimulation by mesothelin peptides by ELISA (*n* = 5).

as hepatoma and breast cancer has also been shown to result in downregulation of Akt, NF- $\kappa$ B & Wnt signaling pathways in the tumor cells [3]. However, the immune regulation of MSCs for tumor-suppression was rarely elucidated. In current study, we found that compact bone derived MSCs showed lower CD90 expression compared to BM-MSCs, and this population significantly improved anti-tumoral effects while applied alone or in combination with a mesothelin-targeted and immune-activating fusion protein VIC-008.

Previous study provided evidence that hMSC with a significant decrease in CD90 surface molecule expression could elicit a lymphoproliferative allogeneic response in MSC/PBMC/PHA co-cultures [31]. sHLA-G and IL-10 concentrations culture supernatants were not increased. These results suggested that hMSCs with a depressed expression of CD90 exhibit a diminished immunosuppressive activity on T cell proliferation. Other studies showed CD90 expression might have immunosuppressive function. For instance, intraperitoneal CD90<sup>+</sup>CD45<sup>-</sup> mesothelial cells markedly suppressed T cell proliferation with the reduction of CD3  $\zeta$  chain expression [40]. In another study, Coculture of Colonic CD90<sup>+</sup> mesenchymal myofibroblasts and fibroblasts with resting or naïve CD4<sup>+</sup> T cells led to development of cells with Treg phenotype [41]. Our results showed that CD90<sup>low</sup> CB-MSCs could inhibit tumor growth and prolong mouse survival, whereas CD90<sup>+</sup> BM-MSCs didn't exhibit any

anti-tumoral effects in our mouse model of ovarian cancer. These data indicated that CD90 might play an important role in the immune modulation for cancer therapy. MSCs are heterogeneous cell population which could be derived from different tissues and have multilineage differentiation potential. Sca-1 is a known stem cell marker. In this study we found that Sca-1<sup>-</sup> and Sca-1<sup>+</sup> MSCs show distinct morphologies and that CB-MSCs express lower CD90 and higher Sca-1 compared to BM-MSCs. This is associated with superior antitumor efficacy of CB-MSCs to BM-MSCs. More work is needed in the future to determine if defined phenotypes based on CD90 and Sca-1 in MSC population could predict different antitumor activity.

In this study, several genes related to immune regulation that is not mainly expressed in MSCs, were significantly upregulated or downregulated in CB-MSCs under several conditions. These results are in line with a panel of previous findings. For example, MSCs were reported to be engineered to highly express IL-12 [42], IL-21 [43] or IFN $\gamma$  [44] to enhance tumor targeting. CXCL10, a pro-inflammatory cytokine, was increased dramatically while MSCs cultured in macrophage-conditioned medium [45]. IL-10 is an anti-inflammatory cytokine that could inhibit synthesis of pro-inflammatory cytokines and downregulate immune activation [46]. CCL5-CCR5 interaction was reported to be related to MSC-induced tumor metastasis [47, 48]. Other than 3D condition, both TLR-4 stimulation and HSP70 contained



**Figure 7: Combination therapy decreased Treg cells and increased CD8 activation in tumor environment.** (A) Quantification of CD4<sup>+</sup>CD25<sup>+</sup>FoxP3<sup>+</sup> Treg cells in ascites. (B) Quantification of CD8<sup>+</sup>IFN $\gamma$ <sup>+</sup> cells in ascites. (C) Quantification of CD4<sup>+</sup>IFN $\gamma$ <sup>+</sup> cells in ascites. (D) Quantification of intratumoral CD4<sup>+</sup>CD25<sup>+</sup>FoxP3<sup>+</sup> Treg cells. (E) Quantification of intratumoral CD8<sup>+</sup>IFN $\gamma$ <sup>+</sup> T cells. (F) Quantification of intratumoral CD4<sup>+</sup>IFN $\gamma$ <sup>+</sup> T cells.

VIC-008 coculture stimulated similar pattern of gene expression in CB-MSCs. TLR-4 stimulation can polarize MSCs into pro-inflammatory and anti-tumorigenic MSC1 [12, 13]. HSP70 engineered MSCs were validated in enhanced treatment of myocardial damage [49]. A recent study also reported that recombinant HSP70 and mild heat shock could stimulate growth of aged MSCs [50]. All these evidences indicated that CD90<sup>low</sup> CB-MSCs might be tuned into macrophage-like antigen presenting cells and possess an immune-activating property.

It has been recently reported that MSCs could undergo hematopoietic differentiation and achieve a macrophage-like phenotype in tumor progression [51]. MSCs may be stimulated to act as APCs [52]. The contribution of myeloid origin stromal cells to immune escape in tumor microenvironment has been intensively studied in the last decade, represented by myeloid-derived suppressor cells (MDSCs) [53], tumor-associated M2 macrophages (TAMs) [54], and regulatory dendritic cells (DCs) [55]. The infiltrated portions of these cells have great influence on tumor progression [56, 57]. VIC-008 has been verified to stimulate DC maturation and cross-presentation of tumor antigens and might also induce MSCs into immune-activating cells in the presence of tumor antigens. Our results showed improved IFN $\gamma$  secretion upon stimulation with mesothelin peptide in VIC-008 treated group. CB-MSCs applied groups showed increase of IFN $\gamma$  secretion, which indicates that CB-MSCs themselves might also increased antigen presentation to T cells. Combination of CB-MSCs with VIC-008 further significantly increased intratumoral CD8<sup>+</sup>IFN $\gamma$ <sup>+</sup> T cell population, which suggested synergistic effects of the combination therapy.

Although we showed promising results of anti-tumoral effects of CD90<sup>low</sup> CB-MSCs alone and in combination with VIC-008, our study still has some limitations which need to be studied in the future. In this study, we used VIC-008 at 10  $\mu$ g/100  $\mu$ l per mouse while in some other studies we used 20  $\mu$ g/100  $\mu$ l per mouse that improved the therapeutic efficacy. Dosage of CB-MSCs may be further increased to benefit the survival as well. Since some studies suggested that MSCs might promote tumor metastasis, more work is needed to exclude the possibility of CD90<sup>low</sup> MSC-promoted tumor metastasis. The fate of MSCs should also be further explored in the future to better understand their roles in tumor microenvironment. It should also be good to screen and purify CD90<sup>low</sup> MSC population, and further detect markers indicated in other research for subpopulation identification, such as CD146 (a marker related to supporting hematopoiesis) [58, 59], LepR (a marker related to enhanced osteogenic differentiation) [60] and CXCR4 (a marker related to cell migration and engraftment) [61]. More work is needed to systematically profile transcriptome of CD90<sup>low</sup> and CD90<sup>high</sup> MSCs by RNA-Seq analysis. More work is also needed to compare CD90<sup>low</sup> with CD90<sup>high</sup> MSCs in study of

immunomodulatory effects of the MSCs by co-culturing with different lymphocytes and observing the lymphocyte proliferation and activation. Profiling of cytokine expression of CD90<sup>low</sup> and CD90<sup>high</sup> subpopulation will be our next effort to determine selection of right types of MSCs for different therapeutic needs in the future.

In summary, we found the difference of CD90 expression in CB-MSCs and BM-MSCs and evaluated the anti-tumoral effects of unmodified cells in mouse model of ID8 ovarian cancer. Our data demonstrated the synergistic anti-tumoral efficacy by application of CB-MSCs combined with fusion protein VIC-008 and revealed mechanisms by which CB-MSCs modulates immunity alone and in combination with VIC-008. Taken together, our study for the first time identifies an anti-tumoral subtype of MSCs and provides new mechanistic insight into CB-MSC-mediated immunomodulation and highlight the enhanced antitumor efficacy of a cell therapy alone and in combination with a tumor antigen-targeted therapy in mouse ovarian cancer, which could be clinically relevant to patients with this disease.

## MATERIALS AND METHODS

### Isolation of MSCs

MSCs were isolated based on a protocol from Stem Cell Company (<https://www.stemcell.com/mesencult-expansion-kit-mouse.html>). Briefly, the femurs and tibias were obtained from C57BL/6J female mice (4–6 weeks) under aseptic operation. Muscle and connective tissues were totally removed. A syringe pestle was applied to lightly crush the bones to release the marrow. The marrow was filtered and collected for BM-MSCs culture. To generate CB-MSCs, the crushed bone was cut into 1–2 mm pieces and digested by 0.25% Collagenase Type I for 45 min. 10 ml buffer containing PBS, 2% FBS and 1 mM EDTA was used to wash and collect the digested cells. Subject to centrifuge, the cell pellet from bone marrow or the cell pellet and bone fragments are cultured in complete MesenCult™ Medium (StemCell, # 05513) with MesenPure in T-75 tissue culture flasks. Cell cultures were maintained at 37°C in a humidified incubator with 5% CO<sub>2</sub>. Cells were passaged at the ratio of 1:3 at confluent. Cells of passage 2 to 6 were used in following experiments. The stem cell markers of each passage were examined.

### Flow cytometry

MSC and splenocyte suspensions were washed with PBS and stained with Zombie UV viability dye (BioLegend, #423108) and then washed with cell staining buffer (BioLegend, #420201). The cells were then stained with multiple fluorophores conjugated cell surface antibodies (Supplementary Table 1). Fixation/permeabilization reagents



**Table 1: Primers used in this study**

Gene primers	Sequences	Length
$\beta$ -actin forward	AGAGGGAAATCGTGCGTGAC	20
$\beta$ -actin reverse	CAATAGTGATGACCTGGCCGT	21
<i>IL-12</i> forward	CTGTGCCTTGGTAGCATCTATG	22
<i>IL-12</i> reverse	GCAGAGTCTCGCCATTATGATTC	23
<i>IL-21</i> forward	GGACCCTTGTCTGTCTGGTAG	21
<i>IL-21</i> reverse	TGTGGAGCTGATAGAAGTTCAGG	23
<i>IFN<math>\gamma</math></i> forward	TCAAGTGGCATAGATGTGGAAGAA	24
<i>IFN<math>\gamma</math></i> reverse	TGGCTCTGCAGGATTTTCATG	21
<i>CXCL10</i> forward	CCAAGTGCTGCCGTCATTTTC	21
<i>CXCL10</i> reverse	GGCTCGCAGGGATGATTTCAA	21
<i>IL-10</i> forward	GCTCTTACTGACTGGCATGAG	21
<i>IL-10</i> reverse	CGCAGCTCTAGGAGCATGTG	20
<i>CCL5</i> forward	CAGCAGCAAGTGCTCCAATCTT	22
<i>CCL5</i> reverse	TTCTTGAACCCACTTCTTCTCTGG	24

was applied for intracellular staining (BioLegend, #424401). Cells were then stained with fluorophores conjugated intracellular antibodies. The compensations were set up before running the stained cells on Fortessa X-20 (BD Biosciences). Storage events were gated on interested population. Flow data was analyzed by FlowJo V10.

### 3D culture of CB-MSCs

Gelatin microcryogels (GMs) was kindly provided by Du lab in Tsinghua University. The fabrication and use was fully elucidated as previously described [38, 62]. In this study, CB-MSCs were seeded into GMs at the density of  $1 \times 10^7$  cells/ml. The cells suspension was dropped on the monolayer of GMs for auto-absorbing. After incubation in humidified 37°C incubator for 1.5 h for cell attachment, cell-laden GMs were transferred into a new dish and culture medium was added. Two-day culture was applied before cellular analysis.

### Stimulation of CB-MSCs by LPS and VIC-008

LPS were purchased from Sigma-Aldrich as agonist for TLR-4. The fusion proteins VIC-008 were constructed as described previously [29] and expressed by WuXi App Tech (Shanghai, China) in CHO cells and provided at a purity of above 95% by HPLC and an endotoxin level of less than 1.0 EU/mg. For coculture, LPS was applied at 10 ng/ml for 24 hours; VIC-008 was applied at 5 ug/ml for 48 hours.

### Real-time PCR

Cultured cells were lysed by TRIzol (Invitrogen, USA) and RNA isolation and reverse transcription were performed as previously described [63]. Real Time PCR amplification was performed in triplicates according to

procedures reported previously. Relative expression of mRNA was evaluated by  $2^{-\Delta\Delta Ct}$  method and normalized to the expression of  $\beta$ -actin. The primer of the related genes lists in Table 1.

### Tumor cells

Luciferase-expression epithelial ovarian cancer cell line ID8 were previously generated in the lab. Before injection into mice, the cells were cultured in T75 flasks at 37°C in DMEM supplemented with 10% heat-inactivated fetal bovine serum (FBS; Thermo Fisher Scientific), 100U/mL penicillin and streptomycin (Mediatech), 2 mM L-glutamine (Thermo Fisher Scientific). Female C57BL/6J mice injected intraperitoneally (i.p.) with syngeneic mouse ID8 cells would develop clinically evident intra-abdominal tumors [64]. The ID8 cells formed direct contact with the ovarian stroma, resulting in primary tumor formation, secondary peritoneal carcinomatosis, and extensive ascites at late stage [65]. The cytological and architectural features resembled serous carcinoma.

### Animal model and treatment

C57BL/6J female mice (4–6 weeks) were purchased from the Jackson Laboratory and maintained in the MGH animal facility. After one-week accommodation in the animal facility,  $5 \times 10^6$  ID8-luc cells were administered i.p. per mouse. The establishment of the tumor model was identified by positive signal (total photons  $> 1 \times 10^5$ ) using IVIS bioluminescent imaging one week after tumor cell inoculation. All tumor-bearing mice were randomly divided into different groups ( $n = 5$  to 6 in each group) and received saline, CB-MSCs, BM-MSCs, VIC-008 or CB-MSCs + VIC-008 treatments. VIC-008 were applied ip. weekly for 4 weeks from week 1 at the dose of

10 µg/100 µl per mouse. For anesthesia when needed, the mice were administrated ip. with Ketamine (9 mg/ml in saline) and Xylazine (0.9 mg/ml in saline) at 0.1 ml per 10 g of body weight. All animal studies were approved by the Institutional Animal Care and Use Committee of Massachusetts General Hospital.

### Tumor growth and mouse survival

Tumor growth was evaluated by IVIS (PerkinElmer) each week post tumor cell inoculation. Luciferin (Regis Technologies, #1-360222) was applied at the concentration of 30 mg/ml. The mice received 100 µl Luciferin ip. 5 min before imaging. Total photons under the region of interest (ROI) captured by IVIS were used for statistical analysis. Survival time was calculated as life span from the day of tumor inoculation. In some cases, MGH CCM faculties will evaluate severe midsection swelling of the mice and poor body condition, and the life spans of the mice were recorded at the day of euthanasia.

### Processing of splenocytes and stimulation *ex-vivo*

Spleens were harvested at 7 weeks post tumor inoculation and placed in cold PBS and then mashed by two baked frosted glass slides. Splenocytes were passed through 40 µm cell strainers to get rid of connective tissue and then lysed by RBC lysis buffer.  $2 \times 10^6$  splenocytes were placed per well in 24-well plates cultured with RPMI 1640 medium supplemented with L-glutamine and FBS. 2 µg/ml recombinant mouse mesothelin (BioLegend, #594006) was applied for 72-hour stimulation. Brefeldin A and Monesin (BioLegend, #420601 and #420701) were added into the culture medium during the last five hours. The supernatant was collected to detect IFN $\gamma$  by ELISA. The splenocytes were then harvested and prepared for flow cytometry.

### ELISA

Supernatant IFN $\gamma$  and serum CXCL12 were evaluated by Duoset ELISA kit purchased from R&D Systems. For CXCL12, blood was drawn and serum was extracted 6 weeks post tumor inoculation. Following the manufacturer's instructions, three times diluted serum was reacted with capture antibody and detection antibody. Microplate reader read the 96-well plates at 450 nm.

### Processing of ascites and ascites cells

7 weeks post tumor inoculation the mice were sacrificed by CO<sub>2</sub> and processed to obtain the ascites and tumors. Ascites was centrifuged at 1500 rpm for 5 min to get rid of supernatant. Red blood cells (RBCs) were lysed by RBC lysis buffer (BioLegend, #420301) twice. The cells were then immunostained for flow cytometric analysis. Tumor tissues were sliced into 1–2 mm pieces and dissociated in DMEM supplemented with 2 mg/ml

collagenase type IV (ThermoFisher, #17104-019), 2 mg/ml hyaluronidase (Sigma, #H3506), and 2 mg/ml BSA (Sigma, #05470) for 1.5 h at 37°C, shaking at a very slow speed for digestion. The cell suspension was then filtered through 70 µm cell strainers to collect the cells for immunostaining.

### Statistical analyses

One-way ANOVA, two-way ANOVA and student *T*-test were applied for most statistical analysis. GraphPad Prism 7 was used to make graphs and calculate *P* values. Survival curves were analyzed by Kaplan-Meier method and log-rank test. *P* value  $\leq 0.05$  was considered statistic significant. ‘\*’ refers to  $P \leq 0.05$ ; ‘\*\*’ refers to  $P \leq 0.01$ ; ‘\*\*\*’ refers to  $P \leq 0.001$ , ‘\*\*\*\*’ refers to  $P \leq 0.0001$ . Error bars represented mean and SD or SEM.

### Abbreviations

MSCs: mesenchymal stem cells; CB-MSCs: compact bone-derived mesenchymal stem cells; BM-MSCs: bone marrow-derived MSCs; APCs: antigen-presenting cells; TLR: toll-like receptor; TRAIL: tumor necrosis factor-related apoptosis-inducing ligand; DCs: dendritic cells; GMs: gelatin microcryogels; LPS: lipopolysaccharide; PCR: polymerase chain reaction; ELISA: enzyme-linked immunosorbent assay; Sca-1: stem cell antigen-1; HSP70: 70 kilodalton heat shock proteins; FoxP3: forkhead box P3; Tregs: regulatory T cells; MDSCs: myeloid-derived suppressor cells; TAMs: tumor-associated M2 macrophages; LepR: leptin receptor.

### Author contributions

Yang Zeng designed the experiments, analyzed the data and wrote the manuscript under direct supervision of Huabiao Chen. Yang Zeng and Binghao Li performed the experiments. Richard T. Penson, Mark C. Poznansky and Yanan Du provided extra supervision and expertise to review the results and manuscript. Tao Li, Wei Liu, and Chongzhao Ran provided technical and material support and helped review the manuscript.

### ACKNOWLEDGMENTS

This work was supported by the Assistant Secretary of Defense for Health Affairs, through the Ovarian Cancer Research Program under Award No. W81XWH181058501. Opinions, interpretations, conclusions and recommendations are those of the author and are not necessarily endorsed by the Department of Defense. Cytometric findings reported here were performed in the MGH Department of Pathology Flow and Image Cytometry Research Core, which is supported by the NIH Shared Instrumentation grants 1S10OD012027-01A1, 1S10OD016372-01, 1S10RR020936-01, and 1S10RR023440-01A1.

## CONFLICTS OF INTEREST

The authors declare no conflicts of interest.

## REFERENCES

1. Wefers C, Lambert LJ, Torensma R, Hato SV. Cellular immunotherapy in ovarian cancer: Targeting the stem of recurrence. *Gynecol Oncol*. 2015; 137:335–42. <https://doi.org/10.1016/j.ygyno.2015.02.019>. [PubMed]
2. Schwab CL, English DP, Roque DM, Pasternak M, Santin AD. Past, present and future targets for immunotherapy in ovarian cancer. *Immunotherapy*. 2014; 6:1279–93. <https://doi.org/10.2217/imt.14.90>. [PubMed]
3. Ramdasi S, Sarang S, Viswanathan C. Potential of Mesenchymal Stem Cell based application in Cancer. *Int J Hematol Oncol Stem Cell Res*. 2015; 9:95–103. [PubMed]
4. Amara I, Touati W, Beaune P, de Waziers I. Mesenchymal stem cells as cellular vehicles for prodrug gene therapy against tumors. *Biochimie*. 2014; 105:4–11. <https://doi.org/10.1016/j.biochi.2014.06.016>. [PubMed]
5. Dembinski JL, Wilson SM, Spaeth EL, Studeny M, Zompetta C, Samudio I, Roby K, Andreeff M, Marini FC. Tumor stroma engraftment of gene-modified mesenchymal stem cells as anti-tumor therapy against ovarian cancer. *Cytotherapy*. 2013; 15:20–32. <https://doi.org/10.1016/j.jcyt.2012.10.003>. [PubMed]
6. Jiang J, Wei D, Sun L, Wang Y, Wu X, Li Y, Fang Z, Shang H, Wei Z. A preliminary study on the construction of double suicide gene delivery vectors by mesenchymal stem cells and the *in vitro* inhibitory effects on SKOV3 cells. *Oncol Rep*. 2014; 31:781–7. <https://doi.org/10.3892/or.2013.2898>. [PubMed]
7. Nowicka A, Marini FC, Solley TN, Elizondo PB, Zhang Y, Sharp HJ, Broaddus R, Kolonin M, Mok SC, Thompson MS, Woodward WA, Lu K, Salimian B, et al. Human omental-derived adipose stem cells increase ovarian cancer proliferation, migration, and chemoresistance. *PLoS One*. 2013; 8:e81859. <https://doi.org/10.1371/journal.pone.0081859>. [PubMed]
8. Touboul C, Lis R, Al Farsi H, Raynaud CM, Warfa M, Althawadi H, Mery E, Mirshahi M, Rafii A. Mesenchymal stem cells enhance ovarian cancer cell infiltration through IL6 secretion in an amniochorionic membrane based 3D model. *J Transl Med*. 2013; 11:28. <https://doi.org/10.1186/1479-5876-11-28>. [PubMed]
9. Wang Y, Chen X, Cao W, Shi Y. Plasticity of mesenchymal stem cells in immunomodulation: pathological and therapeutic implications. *Nat Immunol*. 2014; 15:1009–16. <https://doi.org/10.1038/ni.3002>. [PubMed]
10. Chan JL, Tang KC, Patel AP, Bonilla LM, Pierobon N, Ponzio NM, Rameshwar P. Antigen-presenting property of mesenchymal stem cells occurs during a narrow window at low levels of interferon-gamma. *Blood*. 2006; 107:4817–24. <https://doi.org/10.1182/blood-2006-01-0057>. [PubMed]
11. Francois M, Romieu-Mourez R, Stock-Martineau S, Boivin MN, Bramson JL, Galipeau J. Mesenchymal stromal cells cross-present soluble exogenous antigens as part of their antigen-presenting cell properties. *Blood*. 2009; 114:2632–8. <https://doi.org/10.1182/blood-2009-02-207795>. [PubMed]
12. Waterman RS, Tomchuck SL, Henkle SL, Betancourt AM. A new mesenchymal stem cell (MSC) paradigm: polarization into a pro-inflammatory MSC1 or an Immunosuppressive MSC2 phenotype. *PLoS One*. 2010; 5:e10088. <https://doi.org/10.1371/journal.pone.0010088>. [PubMed]
13. Waterman RS, Henkle SL, Betancourt AM. Mesenchymal stem cell 1 (MSC1)-based therapy attenuates tumor growth whereas MSC2-treatment promotes tumor growth and metastasis. *PLoS One*. 2012; 7:e45590. <https://doi.org/10.1371/journal.pone.0045590>. [PubMed]
14. Franquesa M, Mensah FK, Huizinga R, Strini T, Boon L, Lombardo E, DelaRosa O, Laman JD, Grinyo JM, Weimar W, Betjes MG, Baan CC, Hoogduijn MJ. Human adipose tissue-derived mesenchymal stem cells abrogate plasmablast formation and induce regulatory B cells independently of T helper cells. *Stem Cells*. 2015; 33:880–91. <https://doi.org/10.1002/stem.1881>. [PubMed]
15. Normanton M, Alvarenga H, Hamerschlag N, Ribeiro A, Kondo A, Rizzo LV, Marti LC. Interleukin 7 plays a role in T lymphocyte apoptosis inhibition driven by mesenchymal stem cell without favoring proliferation and cytokines secretion. *PLoS One*. 2014; 9:e106673. <https://doi.org/10.1371/journal.pone.0106673>. [PubMed]
16. Nowak M, Glowacka E, Szpakowski M, Szylo K, Malinowski A, Kulig A, Tchorzewski H, Wilczynski J. Proinflammatory and immunosuppressive serum, ascites and cyst fluid cytokines in patients with early and advanced ovarian cancer and benign ovarian tumors. *Neuro Endocrinol Lett*. 2010; 31:375–83. [PubMed]
17. Sun Z, Wang S, Zhao RC. The roles of mesenchymal stem cells in tumor inflammatory microenvironment. *J Hematol Oncol*. 2014; 7:14. <https://doi.org/10.1186/1756-8722-7-14>. [PubMed]
18. Kim SM, Woo JS, Jeong CH, Ryu CH, Lim JY, Jeun SS. Effective combination therapy for malignant glioma with TRAIL-secreting mesenchymal stem cells and lipoxigenase inhibitor MK886. *Cancer Res*. 2012; 72:4807–17. <https://doi.org/10.1158/0008-5472.CAN-12-0123>. [PubMed]
19. Mueller LP, Luetzkendorf J, Widder M, Nerger K, Caysa H, Mueller T. TRAIL-transduced multipotent mesenchymal stromal cells (TRAIL-MSC) overcome TRAIL resistance in selected CRC cell lines *in vitro* and *in vivo*. *Cancer Gene Ther*. 2011; 18:229–39. <https://doi.org/10.1038/cgt.2010.68>. [PubMed]
20. Kim SW, Kim SJ, Park SH, Yang HG, Kang MC, Choi YW, Kim SM, Jeun SS, Sung YC. Complete regression of metastatic renal cell carcinoma by multiple injections of engineered mesenchymal stem cells expressing dodecameric TRAIL and HSV-TK. *Clin Cancer Res*. 2013; 19:415–27. <https://doi.org/10.1158/1078-0432.CCR-12-1568>. [PubMed]

21. Moniri MR, Sun XY, Rayat J, Dai D, Ao Z, He Z, Verchere CB, Dai LJ, Warnock GL. TRAIL-engineered pancreas-derived mesenchymal stem cells: characterization and cytotoxic effects on pancreatic cancer cells. *Cancer Gene Ther.* 2012; 19:652–8. <https://doi.org/10.1038/cgt.2012.46>. [PubMed]
22. Lathrop MJ, Sage EK, Macura SL, Brooks EM, Cruz F, Bonenfant NR, Sokocevic D, MacPherson MB, Beuschel SL, Dunaway CW, Shukla A, Janes SM, Steele C, et al. Antitumor effects of TRAIL-expressing mesenchymal stromal cells in a mouse xenograft model of human mesothelioma. *Cancer Gene Ther.* 2015; 22:44–54. <https://doi.org/10.1038/cgt.2014.68>. [PubMed]
23. Sage EK, Kolluri KK, McNulty K, Lourenco Sda S, Kalber TL, Ordidge KL, Davies D, Gary Lee YC, Giangreco A, Janes SM. Systemic but not topical TRAIL-expressing mesenchymal stem cells reduce tumour growth in malignant mesothelioma. *Thorax.* 2014; 69:638–47. <https://doi.org/10.1136/thoraxjnl-2013-204110>. [PubMed]
24. Smyth MJ, Ngiow SF, Ribas A, Teng MW. Combination cancer immunotherapies tailored to the tumour microenvironment. *Nat Rev Clin Oncol.* 2016; 13:143–58. <https://doi.org/10.1038/nrclinonc.2015.209>. [PubMed]
25. Banchereau J, Palucka AK. Dendritic cells as therapeutic vaccines against cancer. *Nat Rev Immunol.* 2005; 5:296–306. <https://doi.org/10.1038/nri1592>. [PubMed]
26. Kelly RJ, Sharon E, Pastan I, Hassan R. Mesothelin-targeted agents in clinical trials and in preclinical development. *Mol Cancer Ther.* 2012; 11:517–25. <https://doi.org/10.1158/1535-7163.MCT-11-0454>. [PubMed]
27. Wang Y, Kelly CG, Karttunen JT, Whittall T, Lehner PJ, Duncan L, MacAry P, Younson JS, Singh M, Oehlmann W, Cheng G, Bergmeier L, Lehner T. CD40 is a cellular receptor mediating mycobacterial heat shock protein 70 stimulation of CC-chemokines. *Immunity.* 2001; 15:971–83. [https://doi.org/10.1016/S1074-7613\(01\)00242-4](https://doi.org/10.1016/S1074-7613(01)00242-4). [PubMed]
28. Floto RA, MacAry PA, Boname JM, Mien TS, Kampmann B, Hair JR, Huey OS, Houben EN, Pieters J, Day C, Oehlmann W, Singh M, Smith KG, et al. Dendritic cell stimulation by mycobacterial Hsp70 is mediated through CCR5. *Science.* 2006; 314:454–8. <https://doi.org/10.1126/science.1133515>. [PubMed]
29. Yuan J, Kashiwagi S, Reeves P, Nezivar J, Yang Y, Arrifin NH, Nguyen M, Jean-Mary G, Tong X, Uppal P, Korochkina S, Forbes B, Chen T, et al. A novel mycobacterial Hsp70-containing fusion protein targeting mesothelin augments antitumor immunity and prolongs survival in murine models of ovarian cancer and mesothelioma. *J Hematol Oncol.* 2014; 7:15. <https://doi.org/10.1186/1756-8722-7-15>. [PubMed]
30. Zeng Y, Li B, Reeves P, Ran C, Liu Z, Agha-Abbaslou M, Yuan J, Leblanc P, Sluder A, Gelfand J, Brauns T, Poznansky M, Chen H. Improved antitumoral efficacy of mesothelin targeted immune activating fusion protein in Murine model of ovarian cancer. *Int J Cancer Clin Res.* 2016; 3:051. <https://doi.org/10.23937/2378-3419/3/2/1051>.
31. Campioni D, Rizzo R, Stignani M, Melchiorri L, Ferrari L, Moretti S, Russo A, Bagnara GP, Bonsi L, Alviano F, Lanzoni G, Cuneo A, Baricordi OR, et al. A decreased positivity for CD90 on human mesenchymal stromal cells (MSCs) is associated with a loss of immunosuppressive activity by MSCs. *Cytometry B Clin Cytom.* 2009; 76:225–30. <https://doi.org/10.1002/cyto.b.20461>. [PubMed]
32. de Witte SF, Franquesa M, Baan CC, Hoogduijn MJ. Toward Development of iMesenchymal Stem Cells for Immunomodulatory Therapy. *Front Immunol.* 2015; 6:648. <https://doi.org/10.3389/fimmu.2015.00648>. [PubMed]
33. Langmar Z, Vlesko G. [The potential role of heat shock proteins in the treatment of ovarian cancer]. *Orv Hetil.* 2011; 152:92–5. [PubMed]
34. Brauns T, Leblanc P, Gelfand JA, Poznanski M. Could mycobacterial Hsp70-containing fusion protein lead the way to an affordable therapeutic cancer vaccine? *Expert Rev Vaccines.* 2015; 14:435–46. <https://doi.org/10.1586/14760584.2015.979797>. [PubMed]
35. Milani V, Noessner E, Ghose S, Kuppner M, Ahrens B, Scharner A, Gastpar R, Issels RD. Heat shock protein 70: role in antigen presentation and immune stimulation. *Int J Hyperthermia.* 2002; 18:563–75. <https://doi.org/10.1080/02656730210166140>. [PubMed]
36. Salomonsson E, Stacer AC, Ehrlich A, Luker KE, Luker GD. Imaging CXCL12-CXCR4 signaling in ovarian cancer therapy. *PLoS One.* 2013; 8:e51500. <https://doi.org/10.1371/journal.pone.0051500>. [PubMed]
37. Barcellos-de-Souza P, Gori V, Bambi F, Chiarugi P. Tumor microenvironment: bone marrow-mesenchymal stem cells as key players. *Biochim Biophys Acta.* 2013; 1836:321–35. <https://doi.org/10.1016/j.bbcan.2013.10.004>. [PubMed]
38. Li Y, Liu W, Liu F, Zeng Y, Zuo S, Feng S, Qi C, Wang B, Yan X, Khademhosseini A, Bai J, Du Y. Primed 3D injectable microniches enabling low-dosage cell therapy for critical limb ischemia. *Proc Natl Acad Sci U S A.* 2014; 111:13511–6. <https://doi.org/10.1073/pnas.1411295111>. [PubMed]
39. Prockop DJ, Oh JY. Mesenchymal stem/stromal cells (MSCs): role as guardians of inflammation. *Mol Ther.* 2012; 20:14–20. <https://doi.org/10.1038/mt.2011.211>. [PubMed]
40. Kitayama J, Emoto S, Yamaguchi H, Ishigami H, Yamashita H, Seto Y, Matsuzaki K, Watanabe T. CD90(+)CD45(-) intraperitoneal mesothelial-like cells inhibit T cell activation by production of arginase I. *Cell Immunol.* 2014; 288:8–14. <https://doi.org/10.1016/j.cellimm.2014.01.008>. [PubMed]
41. Pinchuk IV, Beswick EJ, Saada JI, Boya G, Schmitt D, Raju GS, Brenmoehl J, Rogler G, Reyes VE, Powell DW. Human colonic myofibroblasts promote expansion of CD4+ CD25high Foxp3+ regulatory T cells. *Gastroenterology.* 2011; 140:2019–30. <https://doi.org/10.1053/j.gastro.2011.02.059>. [PubMed]
42. Elzaouk L, Moelling K, Pavlovic J. Anti-tumor activity of mesenchymal stem cells producing IL-12 in a mouse melanoma model. *Exp Dermatol.* 2006; 15:865–74. <https://doi.org/10.1111/j.1600-0625.2006.00479.x>. [PubMed]
43. Kim N, Nam YS, Im KI, Lim JY, Lee ES, Jeon YW, Cho SG. IL-21-Expressing Mesenchymal Stem Cells Prevent Lethal

- B-Cell Lymphoma Through Efficient Delivery of IL-21, Which Redirects the Immune System to Target the Tumor. *Stem Cells Dev.* 2015; 24:2808–21. <https://doi.org/10.1089/scd.2015.0103>. [PubMed]
44. Yang X, Du J, Xu X, Xu C, Song W. IFN-gamma-secreting-mesenchymal stem cells exert an antitumor effect *in vivo* via the TRAIL pathway. *J Immunol Res.* 2014; 2014:318098. <https://doi.org/10.1155/2014/318098>. [PubMed]
  45. Anton K, Banerjee D, Glod J. Macrophage-associated mesenchymal stem cells assume an activated, migratory, pro-inflammatory phenotype with increased IL-6 and CXCL10 secretion. *PLoS One.* 2012; 7:e35036. <https://doi.org/10.1371/journal.pone.0035036>. [PubMed]
  46. Iyer SS, Cheng G. Role of interleukin 10 transcriptional regulation in inflammation and autoimmune disease. *Crit Rev Immunol.* 2012; 32:23–63. <https://doi.org/10.1615/critrevimmunol.v32.i1.30>. [PubMed]
  47. Karnoub AE, Dash AB, Vo AP, Sullivan A, Brooks MW, Bell GW, Richardson AL, Polyak K, Tubo R, Weinberg RA. Mesenchymal stem cells within tumour stroma promote breast cancer metastasis. *Nature.* 2007; 449:557–63. <https://doi.org/10.1038/nature06188>. [PubMed]
  48. Singh SK, Mishra MK, Eltoum IA, Bae S, Lillard JW Jr, Singh R. CCR5/CCL5 axis interaction promotes migratory and invasiveness of pancreatic cancer cells. *Sci Rep.* 2018; 8:1323. <https://doi.org/10.1038/s41598-018-19643-0>. [PubMed]
  49. Chang W, Song BW, Lim S, Song H, Shim CY, Cha MJ, Ahn DH, Jung YG, Lee DH, Chung JH, Choi KD, Lee SK, Chung N, et al. Mesenchymal stem cells pretreated with delivered Hsp-1-Hsp70 protein are protected from hypoxia-mediated cell death and rescue heart functions from myocardial injury. *Stem Cells.* 2009; 27:2283–92. <https://doi.org/10.1002/stem.153>. [PubMed]
  50. Andreeva NV, Zatssepina OG, Garbuz DG, Evgen'ev MB, Belyavsky AV. Recombinant HSP70 and mild heat shock stimulate growth of aged mesenchymal stem cells. *Cell Stress Chaperones.* 2016; 21:727–33. <https://doi.org/10.1007/s12192-016-0691-7>. [PubMed]
  51. Zhang L, Tang A, Zhou Y, Tang J, Luo Z, Jiang C, Li X, Xiang J, Li G. Tumor-conditioned mesenchymal stem cells display hematopoietic differentiation and diminished influx of Ca<sup>2+</sup>. *Stem Cells Dev.* 2012; 21:1418–28. <https://doi.org/10.1089/scd.2011.0319>. [PubMed]
  52. Stagg J, Pommey S, Eliopoulos N, Galipeau J. Interferon-gamma-stimulated marrow stromal cells: a new type of nonhematopoietic antigen-presenting cell. *Blood.* 2006; 107:2570–7. <https://doi.org/10.1182/blood-2005-07-2793>. [PubMed]
  53. Gabrilovich DI, Ostrand-Rosenberg S, Bronte V. Coordinated regulation of myeloid cells by tumours. *Nat Rev Immunol.* 2012; 12:253–68. <https://doi.org/10.1038/nri3175>. [PubMed]
  54. Sica A, Larghi P, Mancino A, Rubino L, Porta C, Totaro MG, Rimoldi M, Biswas SK, Allavena P, Mantovani A. Macrophage polarization in tumour progression. *Semin Cancer Biol.* 2008; 18:349–55. <https://doi.org/10.1016/j.semcancer.2008.03.004>. [PubMed]
  55. Conejo-Garcia JR, Rutkowski MR, Cubillos-Ruiz JR. State-of-the-art of regulatory dendritic cells in cancer. *Pharmacol Ther.* 2016; 164:97–104. <https://doi.org/10.1016/j.pharmthera.2016.04.003>. [PubMed]
  56. Umansky V, Sevko A. Tumor microenvironment and myeloid-derived suppressor cells. *Cancer Microenviron.* 2013; 6:169–77. <https://doi.org/10.1007/s12307-012-0126-7>. [PubMed]
  57. Pyzer AR, Cole L, Rosenblatt J, Avigan DE. Myeloid-derived suppressor cells as effectors of immune suppression in cancer. *Int J Cancer.* 2016; 139:1915–26. <https://doi.org/10.1002/ijc.30232>. [PubMed]
  58. Sorrentino A, Ferracin M, Castelli G, Biffoni M, Tomaselli G, Baiocchi M, Fatica A, Negrini M, Peschle C, Valtieri M. Isolation and characterization of CD146+ multipotent mesenchymal stromal cells. *Exp Hematol.* 2008; 36:1035–46. <https://doi.org/10.1016/j.exphem.2008.03.004>. [PubMed]
  59. Mendez-Ferrer S, Michurina TV, Ferraro F, Mazloom AR, Macarthur BD, Lira SA, Scadden DT, Ma'ayan A, Enikolopov GN, Frenette PS. Mesenchymal and haematopoietic stem cells form a unique bone marrow niche. *Nature.* 2010; 466:829–34. <https://doi.org/10.1038/nature09262>. [PubMed]
  60. Zhou BO, Yue R, Murphy MM, Peyer JG, Morrison SJ. Leptin-receptor-expressing mesenchymal stromal cells represent the main source of bone formed by adult bone marrow. *Cell Stem Cell.* 2014; 15:154–68. <https://doi.org/10.1016/j.stem.2014.06.008>. [PubMed]
  61. Yu Q, Liu L, Lin J, Wang Y, Xuan X, Guo Y, Hu S. SDF-1alpha/CXCR4 Axis Mediates The Migration of Mesenchymal Stem Cells to The Hypoxic-Ischemic Brain Lesion in A Rat Model. *Cell J.* 2015; 16:440–7. [PubMed]
  62. Zeng Y, Zhu L, Han Q, Liu W, Mao X, Li Y, Yu N, Feng S, Fu Q, Wang X, Du Y, Zhao RC. Preformed gelatin microcryogels as injectable cell carriers for enhanced skin wound healing. *Acta Biomater.* 2015; 25:291–303. <https://doi.org/10.1016/j.actbio.2015.07.042>. [PubMed]
  63. Plerixafor: AMD 3100, AMD3100, JM 3100, SDZ SID 791. *Drugs R D.* 2007; 8:113–9. <https://doi.org/10.2165/00126839-200708020-00006>. [PubMed]
  64. Fong MY, Kakar SS. Ovarian cancer mouse models: a summary of current models and their limitations. *J Ovarian Res.* 2009; 2:12. <https://doi.org/10.1186/1757-2215-2-12>. [PubMed]
  65. Greenaway J, Moorehead R, Shaw P, Petrik J. Epithelial-stromal interaction increases cell proliferation, survival and tumorigenicity in a mouse model of human epithelial ovarian cancer. *Gynecol Oncol.* 2008; 108:385–94. <https://doi.org/10.1016/j.ygyno.2007.10.035>. [PubMed]