

AWARD NUMBER: W81XWH-14-1-0605

TITLE: Alleviating Autonomic Dysreflexia after Spinal Cord Injury

PRINCIPAL INVESTIGATOR: Veronica J. Tom, PhD

CONTRACTING ORGANIZATION: Drexel University
Philadelphia, PA 19104

REPORT DATE: December 2017

TYPE OF REPORT: Final

PREPARED FOR: U.S. Army Medical Research and Materiel Command
Fort Detrick, Maryland 21702-5012

DISTRIBUTION STATEMENT: Approved for Public Release;
Distribution Unlimited

The views, opinions and/or findings contained in this report are those of the author(s) and should not be construed as an official Department of the Army position, policy or decision unless so designated by other documentation.

REPORT DOCUMENTATION PAGE				Form Approved OMB No. 0704-0188	
Public reporting burden for this collection of information is estimated to average 1 hour per response, including the time for reviewing instructions, searching existing data sources, gathering and maintaining the data needed, and completing and reviewing this collection of information. Send comments regarding this burden estimate or any other aspect of this collection of information, including suggestions for reducing this burden to Department of Defense, Washington Headquarters Services, Directorate for Information Operations and Reports (0704-0188), 1215 Jefferson Davis Highway, Suite 1204, Arlington, VA 22202-4302. Respondents should be aware that notwithstanding any other provision of law, no person shall be subject to any penalty for failing to comply with a collection of information if it does not display a currently valid OMB control number. PLEASE DO NOT RETURN YOUR FORM TO THE ABOVE ADDRESS.					
1. REPORT DATE December 2017		2. REPORT TYPE Final		3. DATES COVERED 30 Sep 2014 - 29 Sep 2017	
4. TITLE AND SUBTITLE Alleviating Autonomic Dysreflexia after Spinal Cord Injury				5a. CONTRACT NUMBER	
				5b. GRANT NUMBER W81XWH-14-1-0605	
				5c. PROGRAM ELEMENT NUMBER	
6. AUTHOR(S) Veronica J. Tom, PhD E-Mail: veronica.tom@drexelmed.edu				5d. PROJECT NUMBER	
				5e. TASK NUMBER	
				5f. WORK UNIT NUMBER	
7. PERFORMING ORGANIZATION NAME(S) AND ADDRESS(ES) Drexel University 3141 Chestnut St Philadelphia, PA 19104				8. PERFORMING ORGANIZATION REPORT NUMBER	
9. SPONSORING / MONITORING AGENCY NAME(S) AND ADDRESS(ES) U.S. Army Medical Research and Materiel Command Fort Detrick, Maryland 21702-5012				10. SPONSOR/MONITOR'S ACRONYM(S)	
				11. SPONSOR/MONITOR'S REPORT NUMBER(S)	
12. DISTRIBUTION / AVAILABILITY STATEMENT Approved for Public Release; Distribution Unlimited					
13. SUPPLEMENTARY NOTES					
14. ABSTRACT Spinal cord injury (SCI) is a devastating event sustained by our servicemembers and as many as 1.3 million Americans that results in the disruption of normal autonomic function, including cardiovascular control. Up to 70%-90% of patients who have sustained a high SCI (above thoracic level 6 of spinal cord) suffer from the serious and life-threatening complication of autonomic dysreflexia. Autonomic dysreflexia manifests as sudden and extreme hypertension that is usually triggered by an annoying noxious or non-noxious stimulus below the level of injury, frequently initiated in the bladder or bowel. It is a key contributor to cardiovascular disease, the leading cause of morbidity and mortality for chronically injured individuals with SCI. However, the only current treatments available to treat autonomic dysreflexia are palliative and involve pharmacological vasodilators that merely help to manage the symptoms of autonomic dysreflexia after an episode has already been initiated. Thus, developing treatments to help prevent the development of this syndrome or decrease its severity is highly important.					
15. SUBJECT TERMS autonomic dysreflexia, spinal cord injury, transplantation, axon regeneration					
16. SECURITY CLASSIFICATION OF:			17. LIMITATION OF ABSTRACT Unclassified	18. NUMBER OF PAGES 25	19a. NAME OF RESPONSIBLE PERSON USAMRMC
a. REPORT Unclassified	b. ABSTRACT Unclassified	c. THIS PAGE Unclassified			19b. TELEPHONE NUMBER (include area code)

Table of Contents

	<u>Page</u>
1. Introduction.....	1
2. Keywords.....	1
3. Accomplishments.....	2
4. Impact.....	13
5. Changes/Problems.....	13
6. Products.....	13
7.Participants & Other Collaborating Organizations.....	13
8. Special Reporting Requirements.....	15
9. Appendices.....	16

INTRODUCTION

Spinal cord injury (SCI) is a devastating event sustained by our servicemembers and as many as 1.3 million Americans that results in the disruption of normal autonomic function, including cardiovascular control. Up to 70%-90% of patients who have sustained a high SCI (above thoracic level 6 of spinal cord) suffer from the serious and life-threatening complication of autonomic dysreflexia. Autonomic dysreflexia manifests as sudden and extreme hypertension that is usually triggered by an annoying noxious or non-noxious stimulus below the level of injury, frequently initiated in the bladder or bowel. It is a key contributor to cardiovascular disease, the leading cause of morbidity and mortality for chronically injured individuals with SCI. However, the only current treatments available to treat autonomic dysreflexia are palliative and involve pharmacological vasodilators that merely help to manage the symptoms of autonomic dysreflexia after an episode has already been initiated. Thus, developing treatments to help prevent the development of this syndrome or decrease its severity is highly important.

Significant progress has been made in identifying the mechanisms behind the development of autonomic dysreflexia after SCI. Firstly, the interruption of tonic, inhibitory control from supraspinal and intraspinal pathways that normally regulate the function of sympathetic preganglionic neurons located within the spinal cord which, in turn, help control cardiovascular function, plays a major role. The severity of autonomic dysreflexia symptoms is inversely correlated with the amount of spared spinal cord tissue, suggesting that sparing (or restoring) even a small amount of this normal input may result in a significantly improved quality of life. Another cause of autonomic dysreflexia is aberrant plasticity of spinal circuits that increase activity of the sympathetic preganglionic neurons. **We will test the hypothesis that AD can be mitigated by targeting these two very different root causes – i.e. using neural precursor cells to restore more normal innervation of sympathetic preganglionic neurons and pharmacologically inhibiting hyperexcitability.**

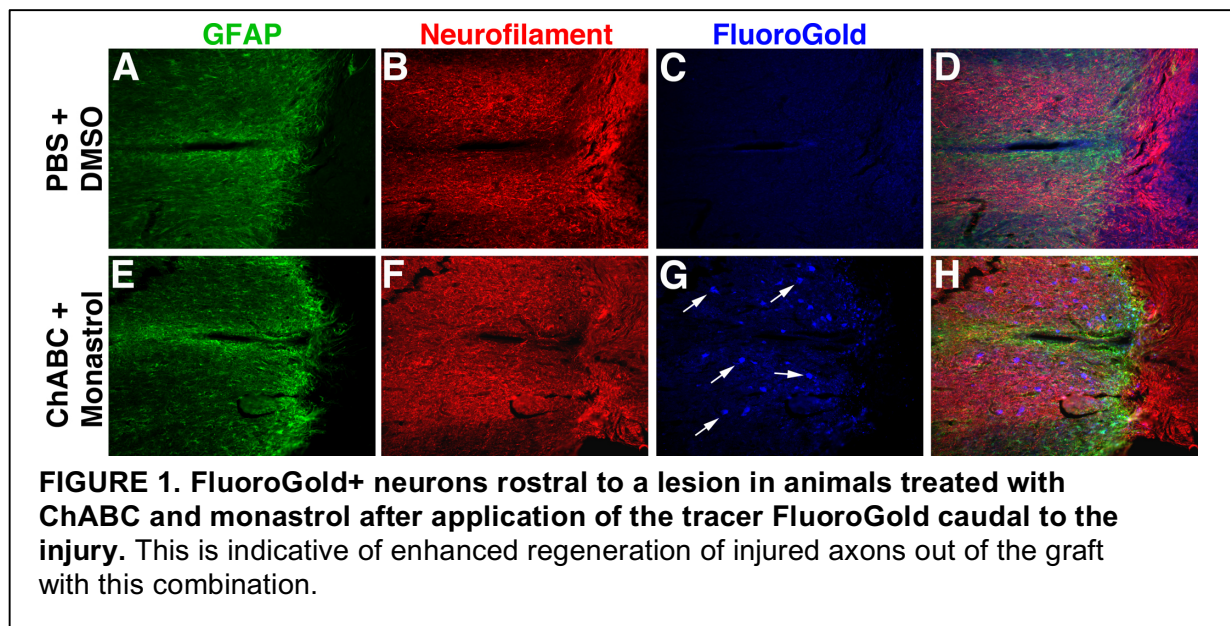
KEYWORDS

Autonomic dysreflexia, spinal cord injury, transplantation, axon regeneration

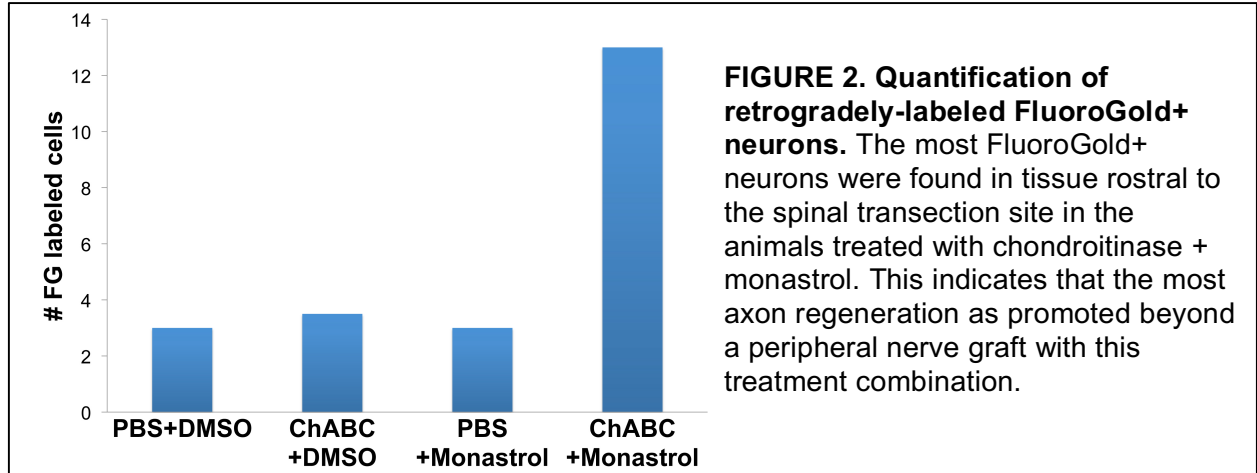
ACCOMPLISHMENTS

We initially set out to determine if promoting axonal regeneration across a lesion site after a high-thoracic spinal cord injury to restore innervation of sympathetic preganglionic neurons attenuates the severity of autonomic dysreflexia. We use a thoracic level 3 (T3) complete spinal transection as our model, since this reliably and predictably results in autonomic dysreflexia.

First, we determined the neuronal origin of axons that emerge from peripheral nerves grafted into a thoracic level 3 (T3) transection site. To do so, animals were transected at T3, segments of pre-degenerated peripheral nerve was grafted into the lesion cavity, and the distal graft-host interface was treated with either vehicle, monastrol (kinesin-5 inhibitor), chondroitinase (to digest inhibitory matrix molecules within the glial scar), or monastrol combined with chondroitinase. One month later, the retrograde tracer FluoroGold was injected into spinal cord caudal to the graft to identify neurons that had regenerated axons through the graft and back into host spinal cord. Animals were perfused a week later. Spinal cord and brain tissue was harvested, sectioned, and mounted onto slides for microscopic analysis. Representative images of the tissue can be seen below in **Figure 1**. In both control animals treated with PBS and DMSO vehicle and animals treated with ChABC and monastrol, neurofilament (red, B, F) axons grew into the nerve grafts. No FluoroGold+ cells (blue, C) are located in astrocyte-rich spinal cord tissue (shown in green, A, E) rostral to the transection/peripheral nerve graft in the control animals, suggesting that no axons regenerated out of the grafts in the control condition where the scar is left intact, as expected. On the other hand, FluoroGold+ neurons are visible rostral to the transection (arrows, G), strongly indicating that the combination of ChABC and monastrol promotes regeneration across the graft interface and into distal spinal cord.



We counted the number of FG+ neurons in a subset of sections (**Figure 2**). We found that the most FluoroGold+ cells were found in the animals treated with chondroitinase+monastrol. Virtually all of these neurons were located within the spinal cord.



Next, we set out to determine if the improved regeneration we observed translated into improved hemodynamic regulation after a spinal cord injury. Animals with thoracic level 3 transections receive peripheral nerve grafts and were treated with either PBS+DMSO (vehicle controls), chondroitinase+DMSO, PBS+monastrol, chondroitinase+monastrol intrathecally. We allowed these animals to survive several months before implanting radiotelemeters into the femoral artery to allow us to measure blood pressure and heart rate in conscious animals. At least 1 week later, we assayed blood pressure and heart rate in these animals at rest and after administering colorectal distension (CRD), a well-established experimental means to trigger an episode of autonomic dysreflexia. We are currently in the process of completing this subtask, including analyzing the data. Unfortunately, we found that despite the increased regeneration, the combination did not significantly attenuate induced autonomic dysreflexia (**see Figure 3**).

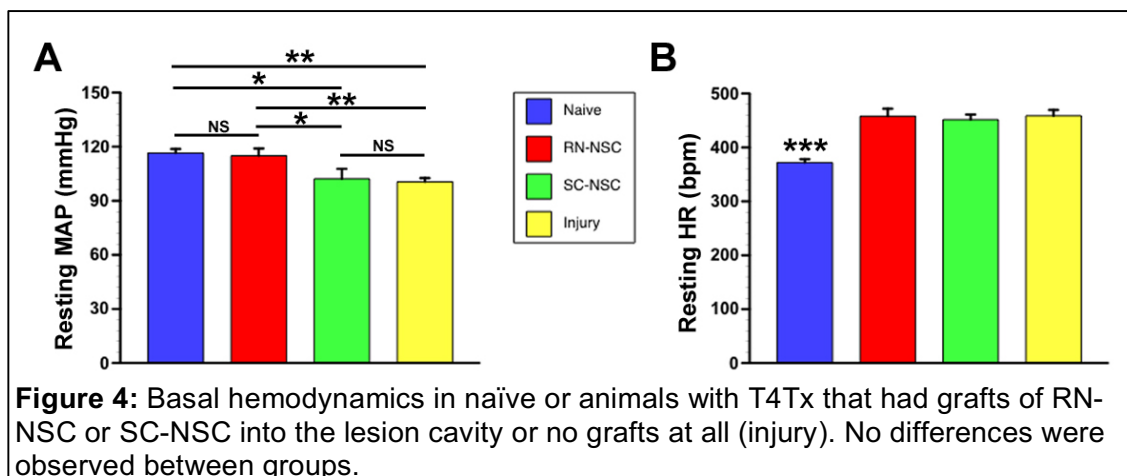
	Basal BP (mmHg)	Change in BP during CRD (mmHg)	Basal HR (bpm)	Change in HR during CRD (bpm)
DMSO + PBS	102.27 ± 1.70	53.09 ± 2.34	471.93 ± 10.67	-161.21 ± 14.13
DMSO + ChABC	98.21 ± 3.20	54.14 ± 2.77	506.06 ± 17.96	-179.43 ± 16.51
Monastrol + ChABC	105.58 ± 0.74	55.04 ± 2.08	469.87 ± 21.09	-196.91 ± 20.36

Figure 3: Promoting axon regeneration beyond a PNG with monastrol + ChABC did not affect autonomic dysreflexia. In animals 8 weeks after T4Tx, grafting, and treatment with monastrol and chondroitinase, basal blood pressure (BP) and heart rate (HR) were similar across the 3 treatment groups. Colorectal distension was used to induce autonomic dysreflexia. Animals from all 3 groups all had responses stereotypical of an autonomic dysreflexic episode to the stimulus i.e. hypertension and concurrent bradycardia. No differences between the degree of hypertension or bradycardia were observed between groups.

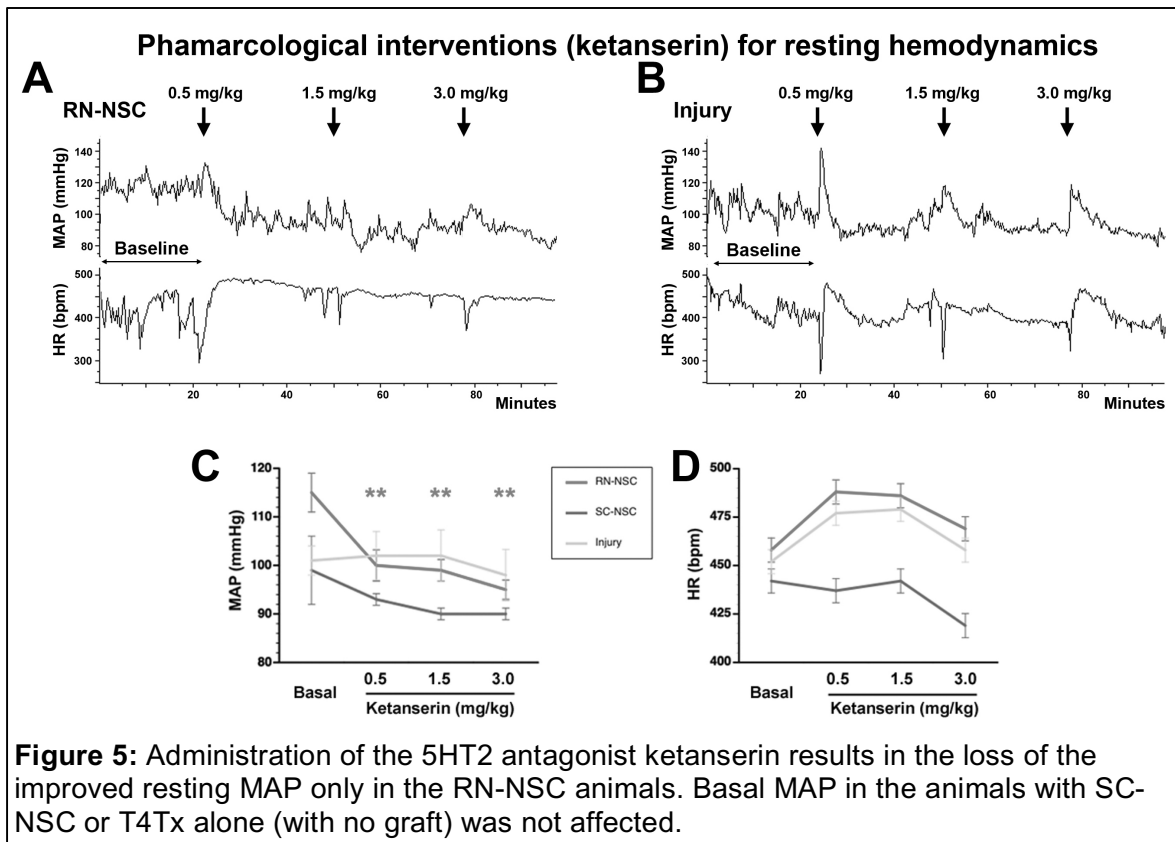
In our proposal, we stated that an alternative approach would focus on enhancing supraspinal axonal regeneration into a transplant of neural progenitors into the lesion cavity in lieu of a peripheral nerve graft to diminish autonomic dysreflexia. We previously demonstrated that grafting a population of neural progenitors into a high-thoracic transection site partially restores cardiovascular regulation to diminish autonomic dysreflexia, possibly via the formation of a compensatory relay circuit (i.e. injured supraspinal axons extending into the graft and synapsing upon neurons in the graft that, in turn, synapse upon sympathetic preganglionic neurons). As serotonin is a normal modulator of SPN activity and the progenitor graft was rich in serotonergic neurons whose axons extended to and appeared to synapse upon sympathetic preganglionic neurons, we further surmise that this improvement may be related to serotonergic neurons within the graft. Thus, as presented in the Alternative Approaches in our proposal, we requested to modify our experimental plan to graft neural progenitors enriched in serotonergic neurons into a high-thoracic transection site rather than grafting of peripheral nerve. Dr. Tian Wang, our Science Officer, approved that request. Accordingly, we submitted amendments to the USAMRMC ACURO and Drexel's IACUC to modify the experimental procedures that were subsequently approved.

We initiated the experiments to examine the role of transplanting a population enriched in serotonergic progenitors into a T4Tx site. Specifically, animals received complete transections at T4 spinal cord (T4Tx). Neural stem cell progenitors harvested from embryonic day 13 spinal cord (SC-NSC) or the raphe nuclei (RN-NSC) of a GFP+ donor animal were then grafted into the lesion cavity of some animals. Other T4Tx animals did not receive any transplants. The animals survived for 8 weeks and then were implanted with radiotelemeters into the descending aorta to allow us to obtain hemodynamic data, both at rest and during colorectal distension (CRD) to trigger autonomic dysreflexia, from them.

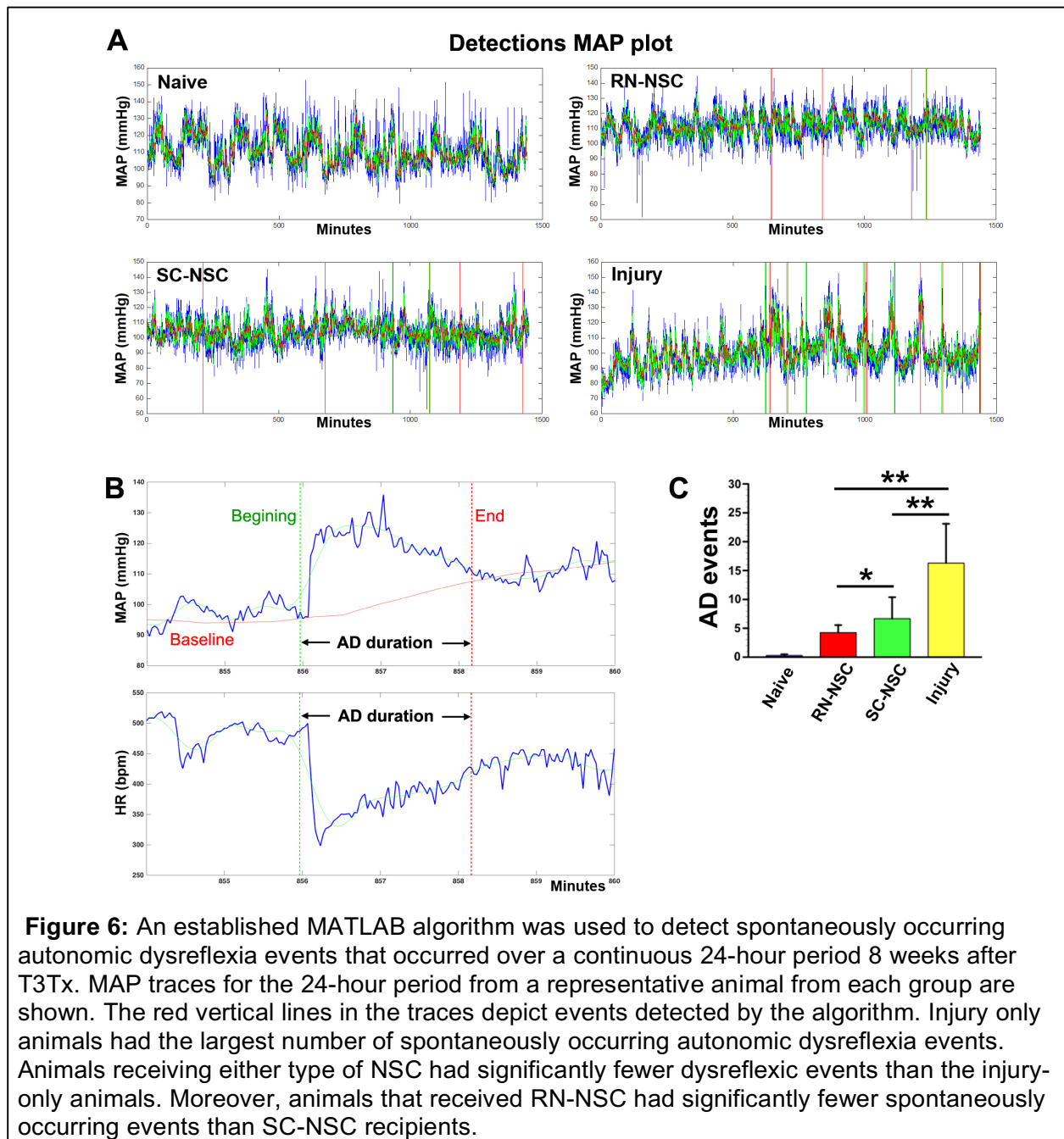
We found that following T4Tx, the resting mean arterial pressure (MAP) of T4Tx only and SC-NSC animals was significantly decreased (see **Figure 4A**). Interestingly, the resting mean arterial pressure (MAP) of T4Tx animals that received RN-NSCs was similar to that of naïve, uninjured animals. All injured animals, regardless of the type of transplant or whether they received transplants at all, had significantly higher resting HR than uninjured animals (**Figure 4B**). No differences in HR were noted between the injury groups.



To determine if the improved basal hemodynamics in the RN-NSC animals was mediated by serotonin (5HT), we assessed basal BP and HR after administering increasing concentrations of ketanserin, a 5HT₂ antagonist. Inhibiting 5HT₂ signaling diminished resting MAP in the animals with RN-NSC only (**Figure 5A,C**). There was no affect in the T4Tx animals with no graft (**Figure 5B,C**) nor the animals with the SC-NSC grafts (**Figure 5C**). There was no change in resting HR in any of these groups (**Figure 5D**). These data indicate that 5HT transmission plays an important role in improving basal hemodynamics in the RN-NSC animals.



People with a high-level spinal cord injury often experience multiple episodes of autonomic dysreflexia daily. To determine if transplanting RN-NSC or SC-NSC into a T4Tx site diminishes the number of spontaneously occurring autonomic dysreflexic episodes, we recorded HR and BP in T4Tx animals with RN-NSC, SC-NSC or no graft over a continuous 24-hour period 8 weeks after injury. We used an established MATLAB algorithm to detect events during this time frame. We found that animals with T4Tx but no graft experienced ~15 dysreflexic events daily (**Figure 6**). Animals receiving either type of NSC had significantly fewer dysreflexic events than the injury-only animals. Moreover, animals that received RN-NSC had significantly fewer spontaneously occurring events than SC-NSC recipients.



When further examined the effect of transplanting these cells during a more controlled, experimentally induced autonomic dysreflexic episode. We used CRD to induce a dysreflexic episode, T4Tx non-transplanted animals displayed a characteristic spike in mean arterial pressure (MAP; **Figure 7A,B**). The animals transplanted with RN-NSC or SC-NSC had a significantly smaller increase in MAP, indicative of diminished autonomic dysreflexia (**Figure 7B**). We did not observe any differences in the degree of bradycardia (**Figure 7B**).

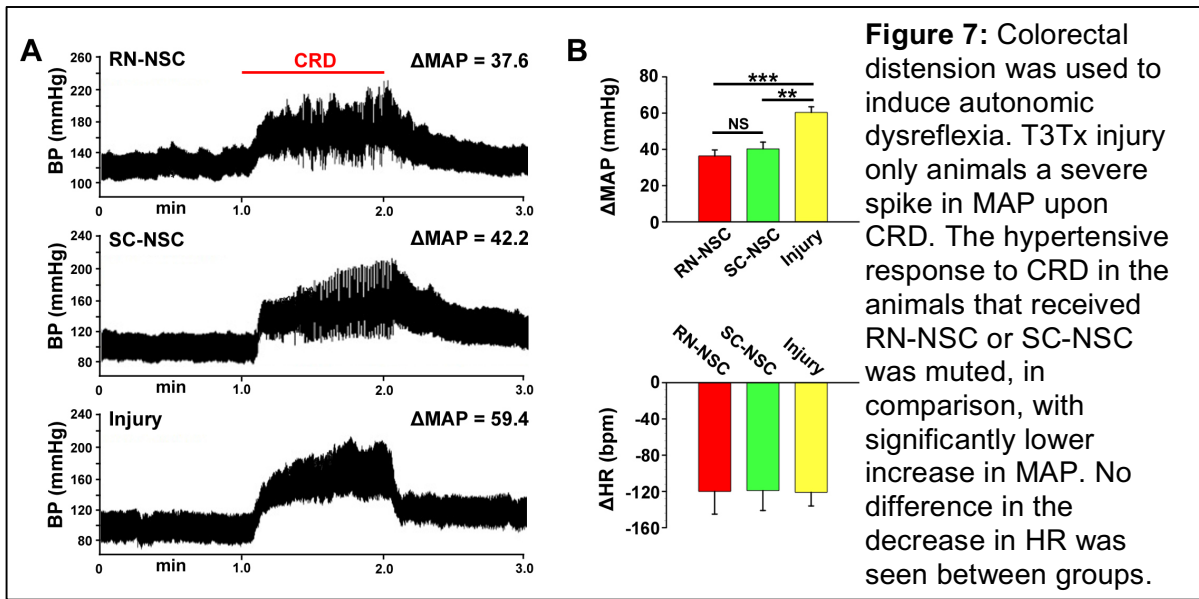


Figure 7: Colorectal distension was used to induce autonomic dysreflexia. T3Tx injury only animals a severe spike in MAP upon CRD. The hypertensive response to CRD in the animals that received RN-NSC or SC-NSC was muted, in comparison, with significantly lower increase in MAP. No difference in the decrease in HR was seen between groups.

Since our hypothesis is that transplantation of RN-NSC will establish a relay for supraspinal input to improve cardiovascular regulation after a high-thoracic complete spinal transection (T3Tx), we wanted to determine if the diminished autonomic dysreflexia we saw in the animals that received RN-NSC was dependent upon growth into the graft. To do this, we re-transected these animals rostral to the T4Tx site 8 weeks after the grafting. This would interrupt any axons originating rostral to the graft that grow into the graft. Re-transection rostral to the RN-NSC did not affect basal hemodynamics but did result in an increase in the number of spontaneously occurring AD events (**Figure 8B**) as well as an increase in the MAP increase during these events (**Figure 8C**), suggesting that input from supraspinal regions played at least a partial role in attenuating AD.

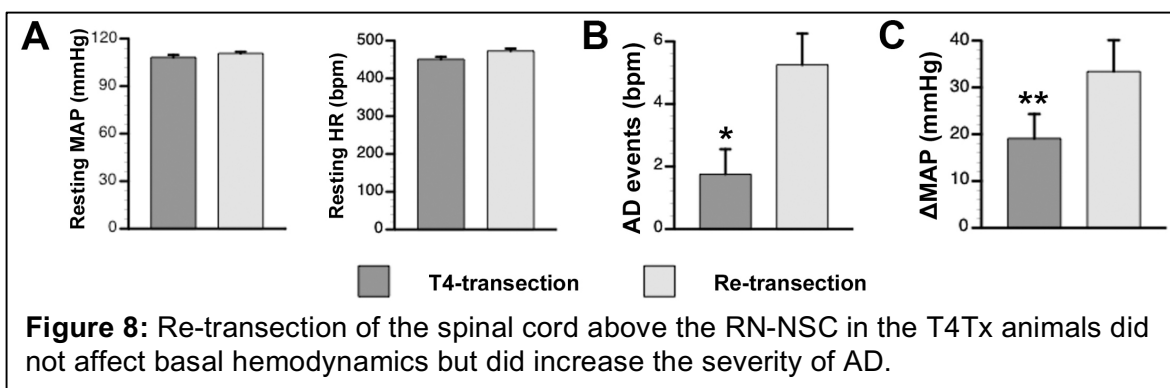
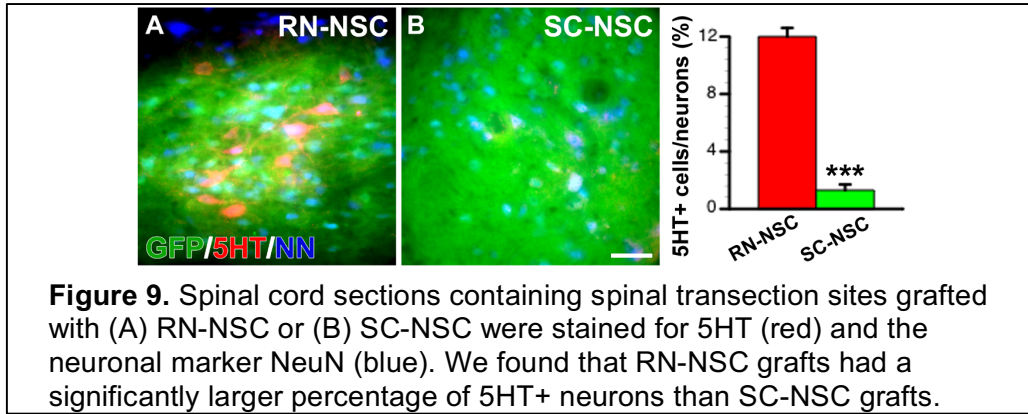
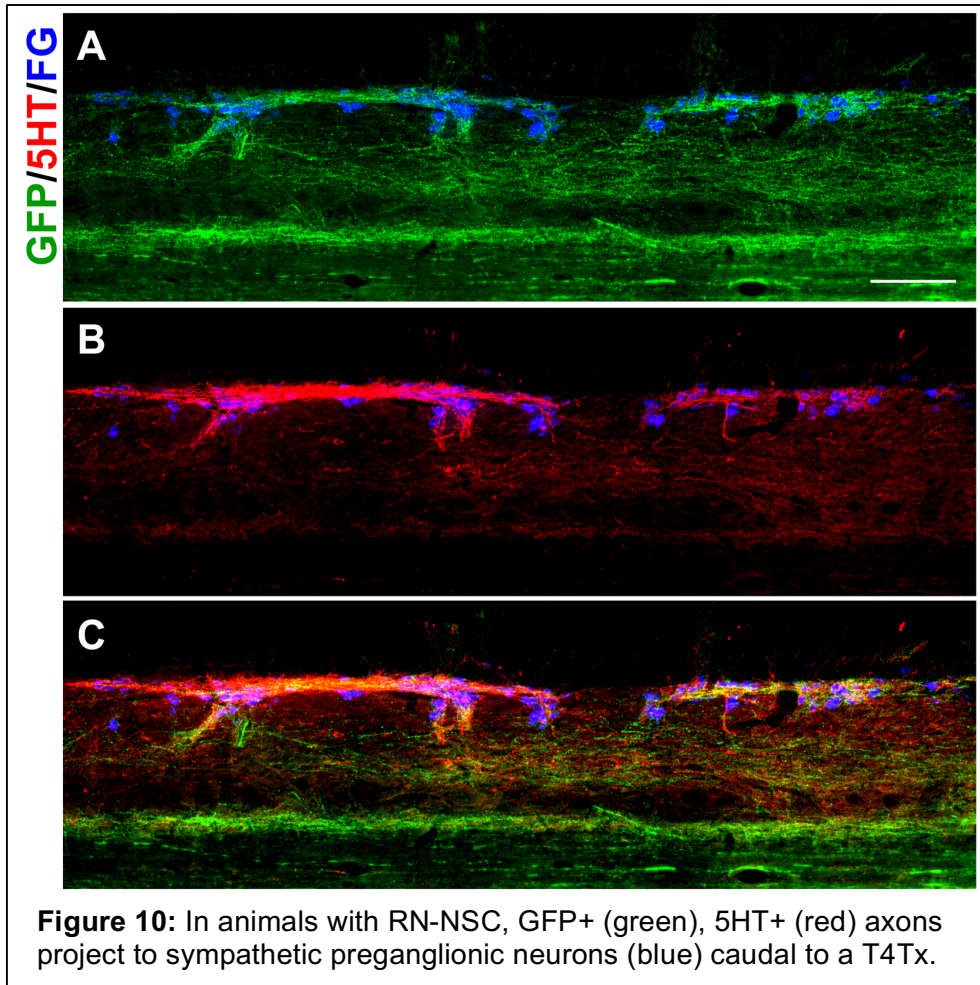


Figure 8: Re-transection of the spinal cord above the RN-NSC in the T4Tx animals did not affect basal hemodynamics but did increase the severity of AD.

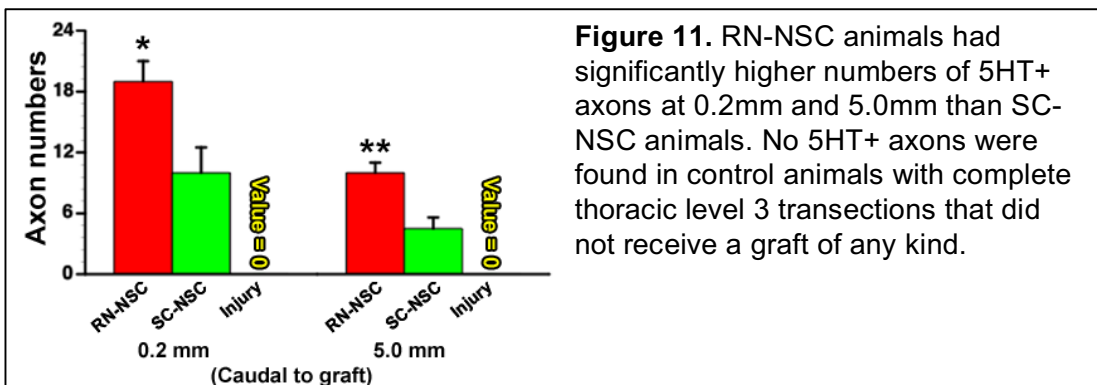
Because our hypothesis was that enriching for serotonergic precursors would mediate recovery, we wanted to determine that 5HT neurons were indeed in the graft. We analyzed the number of 5HT⁺ neurons in the RN-NSC and SC-NSC grafts. We stained longitudinal spinal cord sections containing spinal transection sites grafted with RN-NSC (**Figure 9A**) or SC-NSC (**Figure 9B**) for 5HT (red) and the neuronal marker NeuN (blue). We calculated the percentage of NeuN⁺ neurons that in the GFP⁺ graft that were also 5HT⁺. We found that RN-NSC grafts had a significantly larger percentage of 5HT⁺ neurons than SC-NSC grafts (**Figure 9C**). We found that the percentage of neurons in the graft that are 5HT⁺ were significantly greater in the RN-NSC grafts (**Figure 9**).



We next sought to determine that the 5HT⁺ neurons derived from the RN-NSC grafts projected to sympathetic preganglionic neurons located below the T4Tx. We injected FluoroGold (FG) i.p., a well-established means to label sympathetic preganglionic neurons. After animals were perfused a week later, we sectioned spinal cord tissue containing the graft and tissue caudal to the T3Tx and immunostained for 5HT and GFP to identify the NSCs and their axons. In RN-NSC animals, we found that many GFP⁺ axons (green fibers, **Figure 10A,C**) extend from the graft into spinal cord below the T3Tx, including in the vicinity of FG⁺ sympathetic preganglionic neurons (blue, **Figure 10**). Moreover, many 5HT⁺ axons (red) were found caudal to the T3Tx (**Figure 10B,C**) and innervating FG⁺ sympathetic preganglionic neurons, which we don't observe in T4Tx only animals because all supraspinal 5HT input to caudal cord is lost.



We quantified the number of 5HT⁺ axons in spinal cord 0.2mm and 5.0mm caudal to the injury compared to T3Tx alone with no graft. We found no 5HT⁺ axons below a T3Tx in the non-grafted animals, confirming that our lesions were indeed complete and completely disrupted supraspinal 5HT innervation below the injury. Additionally, we found that the number of 5HT⁺ axons caudal to the graft were higher in the animals grafted with RN-NSC (**Figure 11**). Both sets of data correlate with the improved basal hemodynamic parameters that is dependent upon 5HT and less spontaneously occurring AD.



To further assess whether grafted GFP⁺, 5HT⁺ neurons innervated and formed synapses upon host neurons, we stained spinal cord sections below the T4Tx that contained the intermediolateral cell column containing SPNs for GFP, 5HT, and synapsin, a pre-synaptic marker (**Fig. 12**). We observed colocalization of all 3 proteins surrounding host neuron cell bodies, suggestive of the formation synaptic contacts upon those neurons.

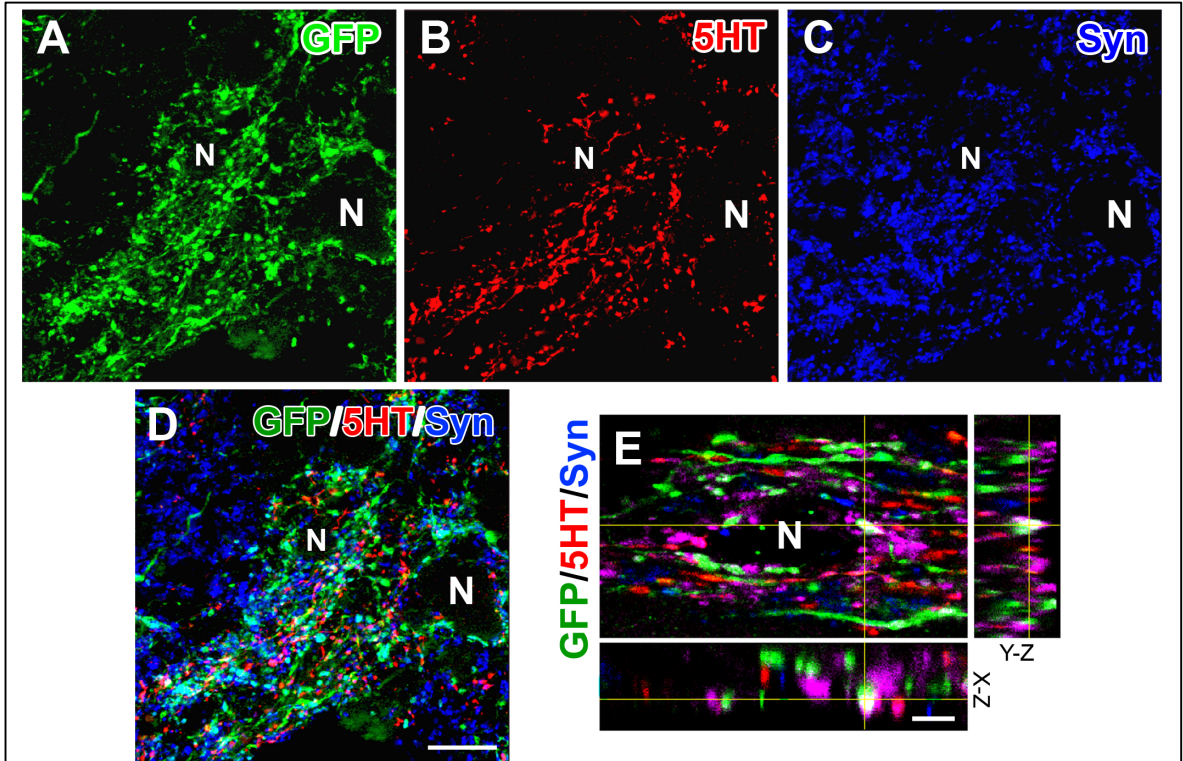
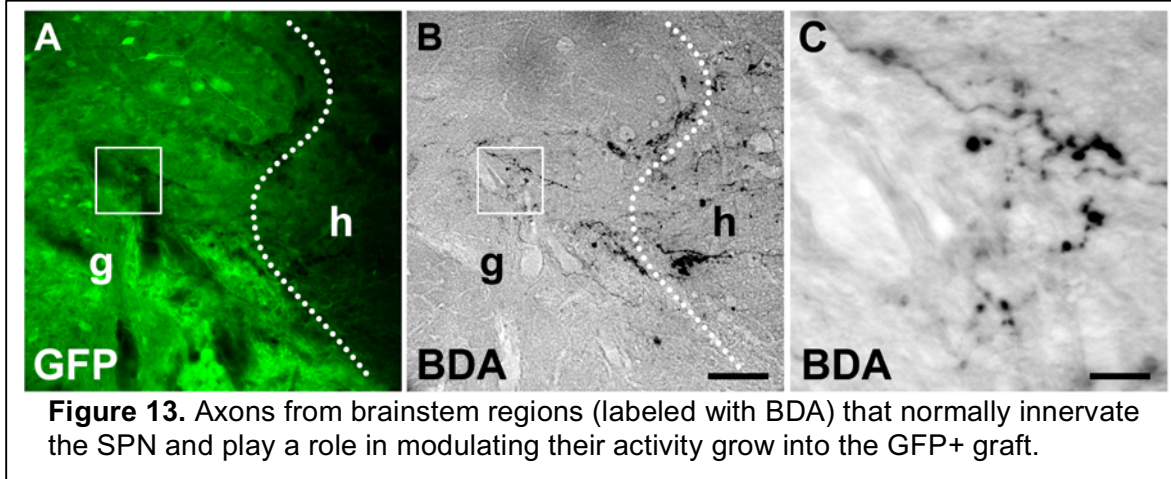


Figure 12. Spinal cord sections containing the intermediolateral cell column were stained for GFP (green), 5HT (red) and synapsin (blue). Single-channel confocal images are shown in A-C. The merged image is shown in D. A Z stack of the confocal images in E indicate colocalization of all 3 proteins in very close proximity to a host neuronal cell body, suggestive of a the formation of synapses upon the neuron.

Since our hypothesis is that transplantation of RN-NSC will establish a relay for supraspinal input to improve cardiovascular regulation after a T4Tx and because re-transection rostral to the RN-NSC diminished some of the improvements in autonomic dysreflexia (**Figure 8**), we sought to determine whether supraspinal axons from populations known to innervate the IML grow into the graft. To do this, 8 weeks after transplantation of GFP⁺ RN-NSCs into a T3Tx site, we stereotactically injected the anterograde tracer biotinylated dextran amine (BDA) into the rostral ventral lateral medulla (RVLM). Two weeks later, we perfused the animals and immunohistochemically examined whether BDA⁺ fibers from the RVLM were present in the GFP⁺ graft. We found that BDA⁺ axons (**Figure 13B**)

did cross the rostral interface of the graft (demarcated by the dashed lines) and extended into the GFP⁺ graft (see **Figure 13A**). Moreover, they formed bouton-like structures in the vicinity of GFP⁺ cells (**Figure 13C**), suggestive of synapse formation. This supports the notion of the formation of a functionally-compensatory relay.



To more directly assess the formation of a functional, compensatory relay, we injected FluoroGold intraperitoneally to retrogradely label specifically sympathetic preganglionic neurons (as above) and retrograde transsynaptic tracer pseudorabies virus (PRV) encoding for red fluorescent protein into the kidneys of T4Tx animals grafted with RN-NSCs 8 weeks after grafting. Animals were perfused 96 hours later. Many PRV⁺ cells were found within the intermediolateral cell column (**Fig. 14A**), as expected since this region contains sympathetic preganglionic neurons and sympathetically-associated interneurons that are closely associated with the sympathetic preganglionic neurons. Indeed, we found FluoroGold⁺ sympathetic preganglionic neurons that were PRV⁺ as well as neighboring FluoroGold⁻ interneurons that were also PRV⁺ (**Fig. 14**). We also found GFP⁺ cells within the graft that were PRV⁺ (**Fig. 14C**). Some of these GFP⁺/PRV⁺ cells were also 5HT⁺ (**Fig. 14G**). There were also PRV⁺ neurons within supraspinal regions that normally innervate sympathetic preganglionic neurons, such as the rostral lateral ventral medulla (RVLM; **Fig. 14D**) and the caudal raphe nuclei (**Fig. 14E**), indicating that fibers from these neurons project into the graft and form synapses upon graft neurons that, in turn, are synaptically-connected with the sympathetic preganglionic neurons. This evidence supports the formation of a functional, sympathetic relay via the grafted neurons, including those that are 5HT⁺.

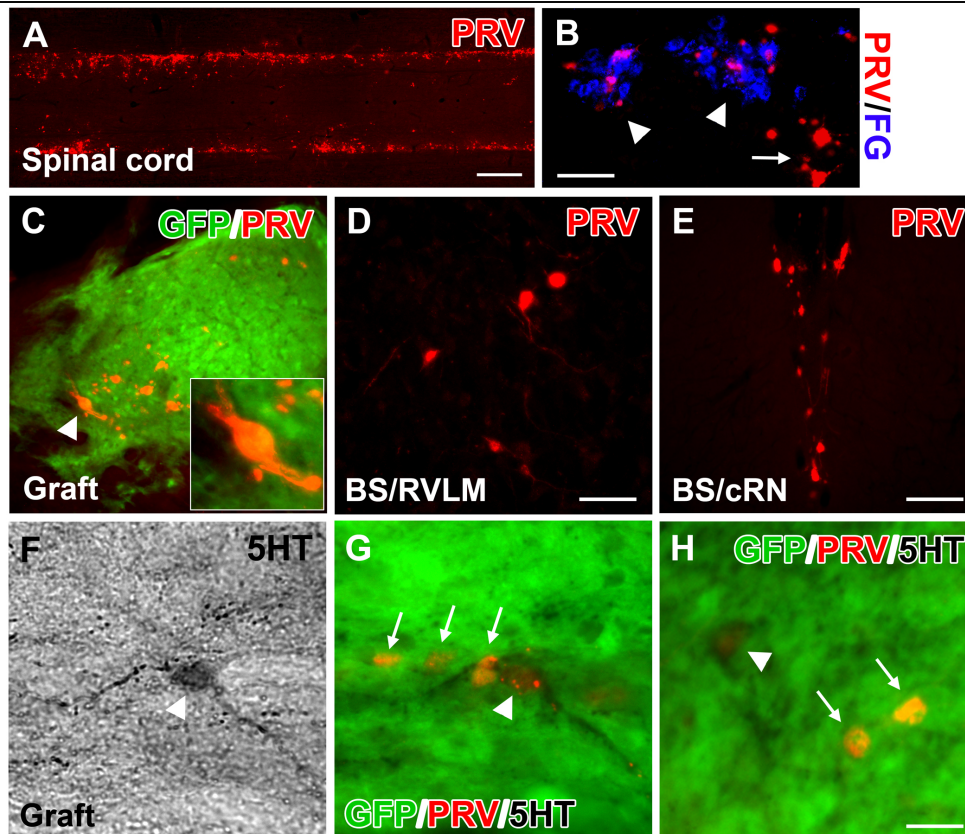


Figure 14. FluoroGold (FG) was injected intraperitoneally and PRV was injected into the kidneys of T4Tx animals with RN-NSC. (A-B) We observed PRV-infected neurons throughout the intermediolateral cell column (A), which contained both FG⁺/PRV⁺ sympathetic preganglionic neurons (arrowheads in B) and neighboring FG⁺/PRV⁺ sympathetically-associated interneurons (arrows in B). (C) GFP⁺ neurons were also PRV⁺ (arrowhead). (D-E) PRV was also found in neurons within the brainstem that normally project to the sympathetic preganglionic neurons, including the RVLM (D) and the caudal raphe nuclei (E). (F-H) A 5HT⁺ neuron within the graft (F, arrowhead) that is also GFP⁺ and PRV⁺ (G, arrowhead). Other GFP⁺/PRV⁺ neurons were 5HT⁻ (arrows).

Gabapentin was previously shown to attenuate AD if administered before CRD. While this is interesting, it does not reflect a real-world scenario. We also assessed whether administration of gabapentin post-CRD attenuated the severity of subsequent episodes. After performing one round of CRD in T4Tx rats, we administered 50mg/kg gabapentin intraperitoneally, which was used in the previous published study. Twenty minutes later, when gabapentin is at peak serum concentrations following intraperitoneal administration, we

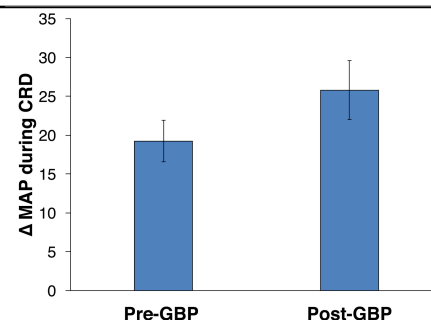


Figure 15. Gabapentin was administered immediately following one round of CRD-induced autonomic dysreflexia. Gabapentin had no effect on the severity of hypertension induced by a second round of CRD 20min later.

administered a second round of CRD. We found that there was no significant difference between the CRD-induced increase in mean arterial pressure pre- and post-gabapentin (**Fig. 15**), indicating that gabapentin does not attenuate the severity of subsequent AD events. These data corroborate data published since the submission of the initial proposal that daily gabapentin administration does not diminish the occurrence of daily AD events.

IMPACT

We have found that transplanting RN-NSC into a high-thoracic spinal transection site improved resting hemodynamics that were dependent upon 5HT signaling. We also found that transplanting RN-NSC or SC-NSC mitigates spontaneously-occurring and experimentally-induced autonomic dysreflexia. This is likely mediated through the formation of a functionally compensatory relay via the graft, as re-transection just above the original injury site diminished these improvements. Moreover, using PRV transsynaptic tracing, we found that axons from grafted neurons, including those that are 5HT⁺, 1) receive input from the sympathetically-associated supraspinal axons; 2) project to the sympathetic preganglionic neurons within the intermediolateral cell column; 3) are incorporated into the sympathetic circuit.

CHANGES/PROBLEMS

We had to switch strategies and transplant neural progenitors in lieu of peripheral nerve grafts to try to restore innervation to the sympathetic preganglionic neurons below the SCI. This change was approved by our Scientific Officer, USAMRMC ACURO and Drexel's IACUC. This resulted in having to repeat all of the labor-intensive Aim 1 experiments using a different graft type.

PRODUCTS

We published an invited review entitled "Cardiovascular dysfunction following spinal cord injury" in *Neural Regeneration Research* [Partida E, Mironets E, Hou S, Tom VJ (2016). Cardiovascular dysfunction following spinal cord injury. *Neural Regen. Res.* 11(2):189-194. PMID: 27073353]. A PDF of the manuscript is included in the Appendix. A manuscript describing the results is currently being finalized for submission.

PARTICIPANTS

Name:	<i>Veronica J. Tom, PhD</i>
Project Role:	<i>Principal Investigator</i>
Researcher Identifier (e.g. ORCID ID):	ORCID ID 0000-0002-3369-7575
Nearest person month worked:	3
Contribution to Project:	<i>Dr. Tom oversaw the progress of the experiments and helped to analyze the data</i>
Funding Support:	N/A

Name:	<i>Andrei Krassioukov, MD, PhD</i>
Project Role:	<i>Collaborator</i>
Researcher Identifier (e.g. ORCID ID):	
Nearest person month worked:	1
Contribution to Project:	<i>Dr. Krassioukov consulted with respect to the experimental technique</i>
Funding Support:	N/A

Name:	<i>Shaoping Hou, PhD</i>
Project Role:	<i>Research associate</i>
Researcher Identifier (e.g. ORCID ID):	
Nearest person month worked:	6
Contribution to Project:	<i>Dr. Hou conducted the animal surgeries, performed histology on the tissue, and analyze the data</i>
Funding Support:	N/A

Name:	<i>Tatiana Saltos</i>
Project Role:	<i>Research technician</i>
Researcher Identifier (e.g. ORCID ID):	
Nearest person month worked:	2
Contribution to Project:	<i>Ms. Saltos assisted with the post-operative animal care and helped with the histology</i>

Funding Support:	N/A
------------------	-----

SPECIAL REPORTING REQUIREMENTS

An updated Quad chart has been included in the Appendix.

Alleviating Autonomic Dysreflexia after Spinal Cord Injury

SC120077

W81XWH-14-1-0605

PI: Veronica J. Tom, Ph.D.

Org: Drexel University

Award Amount: \$613,520

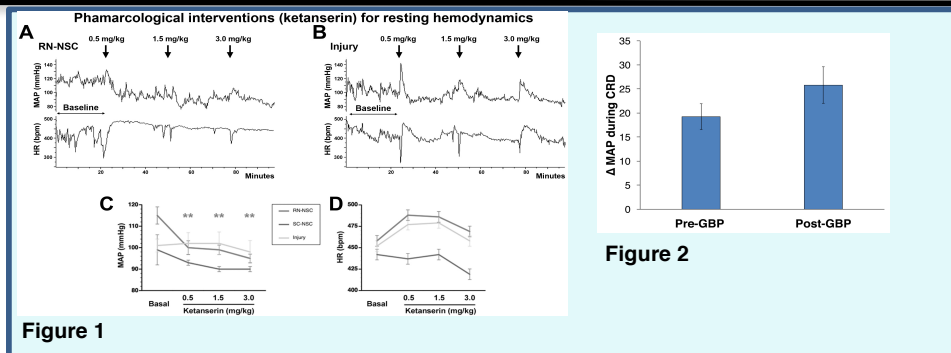


Study/Product Aim(s)

- To test the hypothesis that restoring innervation of SPN in a subchronic, high-thoracic spinal cord transection model will mitigate autonomic dysreflexia
- To test the hypothesis that combining restoration of SPN modulatory circuitry and pharmacological mitigation of hyperexcitability resulting from aberrant plasticity will result in greater mitigation of autonomic dysreflexia than either strategy alone

Approach

Autonomic dysreflexia (AD) is thought to result from two different root causes: 1) loss of tonic, inhibitory input from supraspinal and propriospinal neurons onto SPN; 2) hyperexcitability due to aberrant sprouting. We hypothesize that SPN activity after a high thoracic injury can be normalized by targeting each of these mechanisms – i.e. promoting axonal regeneration to restore normal innervation of SPN and pharmacologically inhibiting excitability – resulting in diminished AD.



Accomplishment: **Fig. 1:** To determine if the improved basal hemodynamics in the RN-NSC animals was mediated by serotonin (5HT), we assessed basal BP and HR after administering increasing concentrations of ketanserin, a 5HT₂ antagonist. Inhibiting 5HT₂ signaling diminished resting MAP in the animals with RN-NSC only. There was no affect in the T4Tx animals with no graft nor the animals with the SC-NSC grafts. There was no change in resting HR in any of these groups. These data indicate that 5HT transmission plays an important role in improving basal hemodynamics in the RN-NSC animals. **Fig. 2:** Gabapentin was previously shown to attenuate AD if administered before CRD. While this is interesting, it does not reflect a real-world scenario. We also assessed whether administration of gabapentin post-CRD attenuated the severity of subsequent episodes. After performing one round of CRD in T4Tx rats, we administered 50mg/kg gabapentin intraperitoneally, which was used in the previous published study. Twenty minutes later, when gabapentin is at peak serum concentrations following intraperitoneal administration, we administered a second round of CRD. We found that there was no significant difference between the CRD-induced increase in mean arterial pressure pre- and post-gabapentin. These data corroborate data published since the submission of the initial proposal that daily gabapentin administration does not diminish the occurrence of daily AD events.

Timeline and Cost

Activities	CY	14	15	16	17
Determine if grafting diminishes AD					
Determine if gabapentin post-CRD is effective in diminishing subsequent episodes					
Determine if combining PNG and gabapentin is additive					
Estimated Budget (\$K)		\$51k	\$204k	\$204k	\$154k

Updated: N/A

Goals/Milestones (Example)

CY14 Goal – Determine if grafting PN into a T3Tx site diminishes AD

☒ Determine neuronal origin of axons that emerge from the PNG

CY15 Goals – Determine if grafting PN into a T3Tx site diminishes AD

☒ Determine if combining a PNG, ChABC, and monastrol modulates colorectal distension-induced AD

CY16 Goal – Determine if gabapentin post-CRD diminishes severity of subsequent AD episodes

☒ Determine latest effective time point of gabapentin administration to alleviate AD

CY17 Goal – Determine if combining PNG-mediated regeneration and gabapentin has additive effects on mitigating AD

☐ Determine if combining the multiple strategies is additive

Comments/Challenges/Issues/Concerns

- We altered our grafting approach to graft neural progenitors rather than segments of peripheral nerve graft into the lesion cavity after obtaining negative data with the peripheral nerve grafts. Thus, we modified the timeline to reflect this change.

Budget Expenditure to Date

Projected Expenditure: \$613.5k

Actual Expenditure: \$613.5k

● INVITED REVIEW

Cardiovascular dysfunction following spinal cord injury

Elizabeth Partida, Eugene Mironets, Shaoping Hou, Veronica J. Tom *

Spinal Cord Research Center, Department of Neurobiology & Anatomy, Drexel University College of Medicine, Philadelphia, PA, USA

How to cite this article: Partida E, Mironets E, Hou S, Tom VJ (2016) Cardiovascular dysfunction following spinal cord injury. *Neural Regen Res* 11(2):189-194.

Funding: This work was supported by research grants to VJT from the National Institutes of Health (R01 NS085426) and the Department of Defense (W81XWH-14-1-060).

Abstract

Both sensorimotor and autonomic dysfunctions often occur after spinal cord injury (SCI). Particularly, a high thoracic or cervical SCI interrupts supraspinal vasomotor pathways and results in disordered hemodynamics due to deregulated sympathetic outflow. As a result of the reduced sympathetic activity, patients with SCI may experience hypotension, cardiac dysrhythmias, and hypothermia post-injury. In the chronic phase, changes within the CNS and blood vessels lead to orthostatic hypotension and life-threatening autonomic dysreflexia (AD). AD is characterized by an episodic, massive sympathetic discharge that causes severe hypertension associated with bradycardia. The syndrome is often triggered by unpleasant visceral or sensory stimuli below the injury level. Currently the only treatments are palliative – once a stimulus elicits AD, pharmacological vasodilators are administered to help reduce the spike in arterial blood pressure. However, a more effective means would be to mitigate AD development by attenuating contributing mechanisms, such as the reorganization of intraspinal circuits below the level of injury. A better understanding of the neuropathophysiology underlying cardiovascular dysfunction after SCI is essential to better develop novel therapeutic approaches to restore hemodynamic performance.

Key Words: blood pressure; heart rate; autonomic dysreflexia; hypertension; bradycardia; spinal cord lesion; sprouting; plasticity; bladder distension; relay; sympathetic activity

Introduction

Traumatic spinal cord injury (SCI) interrupts connections between higher centers and the spinal cord and compromises body activity. Both sensorimotor deficits and autonomic disorders greatly influence the functional, psychological, and socioeconomic aspects of patients' lives. Compared to numerous investigations on motor and sensory paralysis, however, autonomic dysfunctions have not been the focus of basic or clinical research for a long time. In recent decades autonomic disorders after SCI have drawn more investigations as researchers and clinicians began to emphasize their clinical priority. The disruption of descending autonomic pathways renders abnormalities in multiple organ systems including cardiovascular function, respiration, gastrointestinal function, micturition, sexual function, sudomotor activity, and thermoregulation. Among various complications that individuals with SCI experience, cardiovascular dysfunction often develops when the injury occurs at the cervical or high thoracic level, resulting in the loss of supraspinal regulation of spinal sympathetic activity. In particular, life-threatening autonomic dysreflexia (AD), which manifests as a sudden episodic hypertension and reflexic bradycardia, can be triggered by unpleasant stimuli below the injury level. Latest epidemiological studies revealed that hundreds of new cases occur each year globally (Lee et al., 2014). Notably, disordered hemodynamics is one of the leading causes of morbidity and mortality in SCI patients (Garshick et al., 2005). Here, we will provide an overview of how the nervous system controls cardiovascular function normally and how modulation of this system is al-

tered following a severe spinal cord injury because of the loss of supraspinal innervation. Additionally, we will discuss how injury-induced plasticity caudal to the injury is another factor that contributes to the development of AD.

Neural Control of Cardiovascular Function

The neural circuitry controlling cardiovascular function is comprised of multiple populations of neurons in the central and peripheral nervous system. Arterial chemoreceptors and cardiopulmonary baroreceptors convey excitatory primary afferent inputs to the nucleus tractus solitarius in the brainstem via the vagus and glossopharyngeal cranial nerves. Baroreceptors in the aortic arch, carotid sinus, and coronary arteries detect changes in arterial pressure whereas chemoreceptors in the carotid bodies respond to the changes in partial pressure of oxygen and carbon dioxide in the blood (Loewy, 1990). The nucleus of the solitary tract is a major recipient of primary sensory cardiovascular information, which, in turn, precisely regulates hemodynamic performance.

Successful cardiovascular regulation is achieved through the exchange of counteracting responses between the two divisions of the autonomic nervous system: the sympathetic and parasympathetic nervous systems. In normal conditions, sympathetic excitation mediates an increase in heart rate (HR) and blood pressure (BP) while parasympathetic activation elicits a reduction of heart rate and reflexive decrease of blood pressure. Sympathetic preganglionic neurons (SPNs) are mainly situated within the intermediolateral cell column (IML) in the lateral horn and gray commissure

*Correspondence to:

Veronica J. Tom, Ph.D.,
veronica.tom@drexelmed.edu.

orcid:

0000-0002-3369-7575
(Veronica J. Tom)

doi: 10.4103/1673-5374.177707
<http://www.nrronline.org/>

Accepted: 2016-01-23

around the central canal at the T₁–L₂ spinal cord levels (**Figure 1A, B**; orange neurons). Some SPNs are also present in the nucleus intercalatus (the gray matter between IML and central canal). The heart is innervated by both sympathetic and parasympathetic systems whereas most peripheral blood vessels receive only sympathetic input. SPNs related to cardiac regulation are located at T_{1–4} spinal cord levels. These neurons send extensions to postganglionic neurons in the superior, middle cervical, and stellate ganglia (**Figure 1A, B**; green neurons). The fibers of the postganglionic neurons in these ganglia, in turn, project and terminate in the target organ (*i.e.*, the heart and the peripheral vessels). The parasympathetic preganglionic neurons (PPNs) innervating the heart are situated in the dorsal motor nucleus of the vagus (DMV) and the nucleus ambiguus in the medulla oblongata. Their projections extend *via* the vagus and glossopharyngeal nerves to the postganglionic neurons, which are present within the epicardium or the cardiac walls adjacent to the sinoatrial and atrioventricular node. Projections of these postganglionic neurons terminate in the heart.

Brainstem and hypothalamus-derived supraspinal pathways control spinal sympathetic and parasympathetic outflow, thereby modulating hemodynamics. Previous research characterized five main brain regions providing input to SPNs in the thoracic spinal cord (**Figure 1A**; red fibers), including the rostral ventrolateral medulla (RVLM), the rostral ventromedial medulla, the caudal raphe nuclei, the A5 region of brainstem, and the paraventricular nucleus (PVN) of the hypothalamus. A phenotypically diverse group of neurons, *e.g.*, adrenergic, glutamatergic and GABAergic profiles, in the RVLM appear to play a major role in regulating cardiovascular function. They have been shown to tonically activate spinal sympathetic neurons and maintain arterial pressure and heart rate (Guyenet et al., 1989). Anatomical and physiological studies have demonstrated that neurons in the RVLM including the C1 group mainly give rise to supraspinal vaso-

motor pathways (Jeske and McKenna, 1992; Dampney et al., 2000). In addition, neurons in other supraspinal regions including the locus coeruleus, arcuate nucleus, and cortex also project to autonomic nuclei in the spinal cord. Experiments reported the discrepancies of descending vasomotor projections localization within the spinal cord among different species. Supraspinal vasomotor pathways are mainly located in the dorsal aspect of the lateral funiculus in humans (Nathan and Smith, 1987; Furlan et al., 2003), in extensive areas from ventral to dorsal aspects of the lateral funiculi in non-human primates, and between the dorsolateral sulcus and dental ligament in cats (Kerr and Alexander, 1964; Lebedev et al., 1986). In rodents, descending vasomotor projections have been identified within the dorsolateral aspects of the spinal cord by using electrophysiological techniques or neuronal tract tracing (Ruggiero et al., 1989; Strack et al., 1989). The supraspinal pathways innervating spinal SPNs contain a varied array of neurotransmitters including amino acids, catecholamines, and neuropeptides. The supraspinal cardiovascular regulation is further modulated by the limbic system.

Neurogenic Shock and Orthostatic Hypotension

The spinal cord enters a state referred to as spinal shock following an insult. During this period that can last from a few days up to 4–12 weeks in humans, reflexes and sensations are absent or depressed below the level of injury (Grigorean et al., 2009). Subsequently, neurogenic shock is experienced shortly after SCI at high levels. Individuals affected by neurogenic shock experience severe hypotension, bradycardia, and hypothermia as a result of the reduced sympathetic activity.

Patients with acute or chronic SCI at a cervical or high thoracic level often have orthostatic hypotension, which is defined as an overall drop in baseline arterial blood pressure and bradycardia. These individuals may experience a decrease of at least 20 mmHg in baseline systolic blood pressure with an increase of at least 10 mmHg in baseline

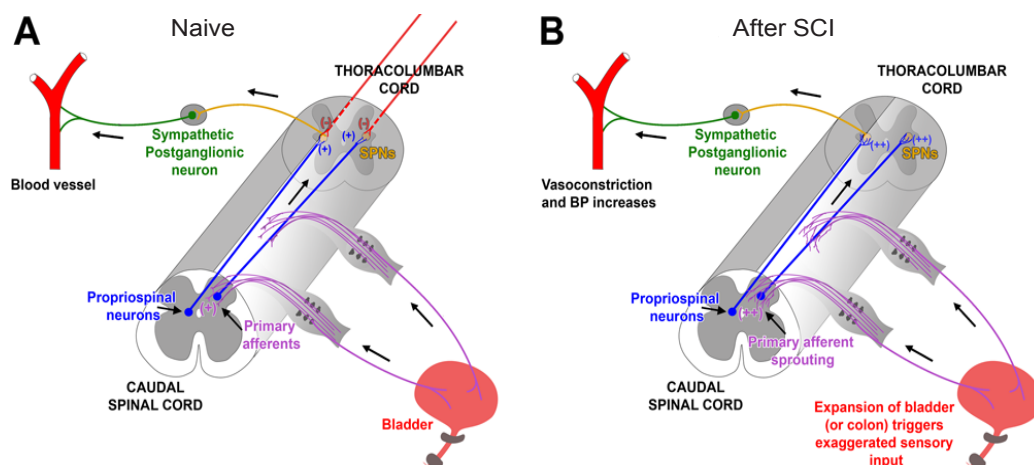


Figure 1 Schematic illustrating mechanisms involved in the development of autonomic dysreflexia (AD) following SCI.

(A) In intact rats, primary pelvic CGRP⁺ C-fiber afferents convey sensory information to ascending propriospinal neurons, which relay the transmission from lumbosacral levels to the SPNs in the thoracolumbar spinal cord, eliciting sympathetic response in the peripheral vessels. (B) After high-level SCI, endogenous levels of NGF in the spinal cord are up-regulated and contribute to the plasticity of spinal neuronal pathways, including sprouting of lumbosacral CGRP⁺ fibers (purple) and propriospinal projections (Lavdas et al., 1997). This results in an exaggerated signal triggered by sensory stimuli, such as distension of the bladder or colon, that is relayed to the reorganized propriospinal projections and then to the uninhibited SPNs. This culminates in a massive sympathetic discharge and baro-reflexic reaction. CGRP: Calcitonin gene-related peptide; SPNs: sympathetic preganglionic neurons; SCI: spinal cord injury.

diastolic blood pressure upon a postural change, *i.e.*, from a supine position to an upright position. In addition to a decrease in arterial blood pressure, some SCI patients may experience blurred vision, light-headedness, dizziness, fatigue, restlessness, and dyspnea. It has been suggested that factors involved in the occurrence of orthostatic hypotension include: (1) excessive venous pooling of blood in the organs and lower extremities due to reduced sympathetic activity and loss of reflexive vessel constriction below the injury level; (2) loss of lower extremity muscle function for counteracting venous pooling; (3) reduced plasma volume as a consequence of hyponatremia, an electrolyte disturbance in which the sodium ion concentration in the plasma is lower than normal; (4) cardiovascular deconditioning resulting from prolonged bed rest (Wecht et al., 2003). The degree of orthostatic hypotension in SCI patients may vary depending on the severity and level of the injury. For example, the extent of hypotension is greater in tetraplegics compared to paraplegics. The different timeframes of orthostatic hypotension following SCI may be due to the stages having distinct mechanisms. In the acute stage, the occurrence of orthostatic hypotension is mostly a result of losing supraspinal vasomotor tone and pooling of blood in the peripheral and splanchnic vasculature. However, orthostatic hypotension in the chronic stage is more related to the reduction of sympathetic activity below the level of injury. Also, the prolonged loss of muscle function below the level of injury contributes to blood pooling in the lower extremities to exacerbate hypotension.

Orthostatic hypotension can be treated physically and pharmacologically. The symptoms are possibly diminished under frequent postural change to a head-up position. Avoiding rapid postural changes can also be effective to prevent a drop in blood pressure. Because peripheral blood pooling is an important factor of the occurrence, in some cases, preventing postural-related venous dilation is useful to reduce hypotension by using abdominal binders, thigh cuffs and lower limb elastic stockings. Individuals with SCI usually do not need treatment with drugs for low blood pressure. If severe symptoms persist, though, a variety of drugs can be used including vasoconstrictors ephedrine, α -adrenergic receptor agonist midodrine, dopamine receptor blocker domperidone and others (Mathias, 2003). Clinicians must be careful with which treatments they choose because certain medications may exacerbate the effects of AD. It is of utmost importance that mechanisms behind AD should be understood when creating a treatment strategy for SCI patients.

Cardiac Dysrhythmias

In humans, the most common symptom in the acute stage after SCI is sinus bradycardia, though other cardiac dysrhythmias may occur, such as cardiac arrest, sinus tachycardia, supraventricular tachycardia, and atrial fibrillation. Almost all quadriplegic patients with a severe cervical SCI have persistent bradycardia, defined as mean heart rate for at least 1 day of < 60 beats/min (Winslow et al., 1986). Though cardiac dysrhythmias emerge in acutely after severe SCI at high levels, cardiac performance can spontaneously improve over time. Atropine can partially and transiently treat bradycardia because of sympathetic deficiency. β -Adrenergic receptor agonists are used to eliminate the sinus pause (Lehmann

et al., 1987). As a compensatory response to hypotension, following the period of neurogenic shock, heart rate usually increases in rat models of high-level SCI (Krassioukov and Weaver, 1995; Laird et al., 2006).

The Development of AD

AD is characterized by a sharp increase in blood pressure and baroreflex-mediated bradycardia in response to visceral or cutaneous stimuli below the level of SCI. In 1860, Hilton first described the condition of AD after observing the symptoms in a 21-year-old man with a complete SCI at vertebral level C₅. Because of the SCI, the subject had bowel dysfunction, as his “bowels (did not) open without medicine. On some days he (had) peculiar sensation of chilliness, becoming pale, then (felt) hot and flushed both at defecation and micturition. The more constipated the bowel, the more these peculiar sensations (were) experienced.” Not much more was understood about AD until after World War I. In 1917, Riddoch and Head more extensively described AD symptoms in several case studies of men who acquired a SCI while in combat. These include excessive sweating, unchecked spinal reflexes, headaches, bradycardia, shivering, flushing, an increase in arterial pressure, piloerection, dysrhythmias and anxiety. Later, it was documented that cases of retinal, cerebral, or subarachnoid hemorrhages, and even death occurred after a rise in arterial blood pressure in individuals with SCI, indicating that AD can have very dire consequences. Indeed, patients who experience AD are at higher than normal risk for stroke, seizures, and other autonomic complications (Krassioukov and Claydon, 2006). While the majority of affected individuals with AD have high thoracic or cervical injuries (up to 90% of individuals with a lesion above T₆), some patients with a spinal lesion as low as T₁₀ occasionally display symptoms similar to AD.

In patients with a high-level SCI, an annoying sensory stimulus, such as a blocked bladder catheter or pressure sore, may activate a sympathetic response, such as eliciting vasoconstriction of the splanchnic vascular bed below the level of injury and elevating blood pressure. Subsequently, increased blood pressure is sensed by baroreceptors in the carotid and aortic arch, which send projections up to the brainstem. To counteract the rise in blood pressure, the integration center in the brainstem transmits signals to the heart *via* parasympathetic pathways to reduce the heart rate. In able-bodied people or people with incomplete or low-level injuries, descending vasomotor pathways generate inhibitory influence on excited SPNs to decrease their activity. Due to the high level and severity of injury in the patients with SCI, however, sufficient descending modulatory projections no longer innervate the SPNs. Thus, the SPNs remain active and blood pressure stays elevated. Seemingly paradoxically, episodic hypertension and bradycardia occur simultaneously (Lindan et al., 1980; Karlsson, 1999). In addition, the excessive parasympathetic output above the level of injury causes vasodilation in the upper body and gives rise to headaches, flushing, sweating, and nasal congestion.

Clinical Issues Concerning SCI Patients with AD

A major clinical problem that many SCI patients experience is dysfunctional thermoregulation, including lower basal core temperatures and a compromised ability of the body

located below the level of the injury to respond to changes in temperature (impaired ability to shiver when cold and to sweat when hot). The severity of the injury directly correlates with the degree of dysregulation and indirectly correlates with how much tissue is spared. Therefore, it is reasonable to use thermodysregulation to assess the extent of the injury as well as residual autonomic function.

Another issue, as earlier noted, is the loss of cardiovascular regulation. The inability to regulate BP and HR becomes particularly problematic when concerning physical performance of high-level athletes. Like most SCI patients, paralympic athletes typically have low BP that impairs their ability to pump blood and oxygen to taxed muscles during strenuous activities, such as competitive sports, compared to able-bodied people. Some paralympic athletes seek to enhance their performance in competition by increasing BP to compensate for the low BP. They often do so by self-inducing AD, also known as “boosting”, to take advantage of the strong sympathetic response (Mazzeo et al., 2015). Common methods of inducing AD include winding leg straps tightly (*e.g.*, constricting feet, legs, scrotum, or testicles), bone fracture, or catheter locking to induce bladder swelling. While inducing repeated bouts of extreme hypertension may temporarily improve their athletic performance, it is at the detriment to their overall well-being, as discussed above. Thus, the International Paralympic Committee officially banned the practice.

Mechanisms behind the Development of AD

There are two phases of AD onset: as early as days or as late as weeks to months after injury that are likely a result of different mechanisms. AD that appears shortly after injury is likely a direct result of interrupting the descending projections to the SPNs below the injury. However, because fully developed AD may not manifest until at least 2 weeks after injury, it is clear that another mechanism contributes to the development of AD. The recording of renal sympathetic nerve activity suggests enhanced transmission through spinal reflex circuits after SCI (Maiorov et al., 1997). Furthermore, other studies using rodent animal models with complete SCI demonstrated that the reorganization of neuronal circuits in the injured spinal cord is a major contributor to the development of AD.

Intraspinal Plasticity Related to AD

One mechanism that is postulated to mediate AD is neuroplasticity that results in hyperexcitability of neural circuits below the level of injury. Below the lesion, the loss of descending neurotransmitter availability often triggers up-regulation of different receptors in spinal neurons, which augments the sensitivity. This process has been implicated in both spontaneous functional recovery and in the development of neurological symptoms, such as hyperreflexia (Miyazato et al., 2013). In support of this, rat spinal interneurons were found to be more excitable and sensitive to both innocuous and noxious cutaneous stimuli below a complete spinal transection site over time. Similarly, both innocuous and noxious somatic and visceral stimuli can elicit sympathetically-mediated AD. Moreover, greater increases in arterial pressure are triggered by colorectal distension (CRD) in chronically than acutely spinally-transected rats (Krassioukov et al., 2002).

The sprouting of pelvic primary afferents following SCI has been related to cardiovascular dysfunction (**Figure 1A, B**; purple fibers). The density of calcitonin gene-related peptide (CGRP)⁺ afferent fibers increases at the lumbosacral spinal cord despite a lack of change in the number of counterpart DRG neurons (Krenz and Weaver, 1998b; Hou et al., 2009). This sprouting appears to be correlated with injury-induced elevation of nerve growth factor (NGF) in the spinal cord below the lesion although the mechanisms that underlie this plasticity are not completely understood. The level of NGF is much higher in the injured spinal cord than in the naïve. Because lumbosacral CGRP⁺ fibers express the TrkA receptor, which binds to NGF, they are highly responsive to this growth factor. Administration of anti-NGF antibodies to prevent TrkA activation in the lower spinal cord after injury attenuates the fiber sprouting and diminishes AD (Krenz et al., 1999; Marsh et al., 2002). Likewise, if the chemorepellant semaphorin-3A is overexpressed in the dorsal horn of lumbar cord, both CGRP⁺ fiber sprouting and AD are significantly reduced (Cameron et al., 2006). These data indicate that plasticity of the small-calibre nociceptive fibers plays a causative role in AD.

Reorganization of intraspinal circuits also likely contributes to alteration of input to sympathetic neurons. After SCI, denervated SPNs below the injury undergo short-term atrophy and lose dendritic arbors during the first week after injury. Nevertheless, normal SPN dendritic arbor and somal size can be re-established within 2 to 4 weeks after following the transient degenerative retraction (Krassioukov and Weaver, 1996; Krenz and Weaver, 1998a). Thus, it was proposed that synapses from supraspinal projections are replaced with new, interneuron inputs (Weaver et al., 1997). Neuroanatomical and electrophysiological evidence corroborate a significant role of propriospinal plasticity in the emergence of AD (Krassioukov et al., 2002). As pelvic primary afferents enter the lumbosacral spinal cord and cannot act directly on thoracolumbar SPNs, a propriospinal relay is believed to mediate the information of sprouted pelvic primary afferents to the thoracolumbar SPNs to elicit AD when the distal colon or bladder is distended (**Figure 1A, B**; blue fibers) (Rabchevsky, 2006). Using anterograde and retrograde neuronal tract tracing methods, both the density of lumbosacral propriospinal fibers and dorsal gray commissure (DGC) neurons significantly increase following complete high thoracic spinal cord transection. Furthermore, there is a significant increase in the number of c-Fos⁺ cells in the lumbosacral gray matter of injured animals following noxious intermittent colorectal distension (Hou et al., 2008), indicating significant activation of local neural circuitry post to injury. Lastly, after spinal transection, spinal reflex circuits increase renal sympathetic nerve activities (Maiorov et al., 1997).

This intraspinal plasticity may be viewed as maladaptive and result in additional pathologies, such as neuropathic pain (either in the form of hyperalgesia or allodynia). Due to the severity of the injury, many AD patients do not always consciously feel the pain that is induced by nociceptive or non-nociceptive sensory stimuli. However, any sparing of spinothalamic or other sensory fibers that communicate pain could be problematic. Because of the sprouting, sensory circuitry after injury typically exhibits a greater degree of excitation than normal (Krassioukov et al., 2002). Primary

afferent fibers that synapse in the superficial layers of the dorsal horn can exhibit robust increases in axon densities below the level of the lesion, potentially leading to the development of allodynia or hyperalgesia (Krenz et al., 1998b). This means that normally innocuous stimuli or sub-threshold noxious stimuli can trigger strong sympathetic responses and an AD episode.

Along these lines, though patients with severe, high-level SCI that are susceptible to AD are largely unable to perceive sensory stimuli delivered to their genitals, sensory circuits relaying input from the genitalia to the spinal cord remain intact. Thus, vibrational or electrical stimulation of the penis is able to trigger ejaculation and is often used to harvest sperm for fertility purposes. For reasons discussed above, such activation of hyperexcitable spinal sensory circuits triggers massive discharge of the SPN and often result in AD.

Changes to Peripheral Vasculature

Traumatic SCI affects the function of peripheral vasculature. The level of plasma catecholamines is often reduced in individuals with high SCI and blood vessels below the level of SCI become hypersensitive to α -adrenergic receptor (AR) stimulants (Krum et al., 1992). Infusing vasoconstrictors epinephrine and norepinephrine (NE) into individuals with a cervical SCI results in a higher increase in blood pressure than what is observed in non-injured individuals, suggesting that blood vessels become hypersensitive to NE (Mathias et al., 1976). In animal experiments, decentralization of postganglionic sympathetic neurons by cutting their preganglionic inputs results in a hypersensitive response to NE. In humans with quadriplegia and cervical SCI, enhanced pressor response to NE was also observed. Thus, peripheral α -AR hyper-responsiveness may partially account for a significantly enhanced pressor response during AD. This hyperreactivity to intrinsic and extrinsic factors are not the only change that occurs to blood vessels after SCI. Repeated bouts of hypertension following injury initiates a process of arterial remodeling. The blood vessels exhibit decreased arterial diameter and increased thickness of artery walls, making the arteries stiffer than the normal (Thijssen et al., 2012). This greatly affects blood flow and arterial pressure, and contributes to an increased risk of cardiovascular disease.

Potential Treatment Strategies

As previously described, SCI individuals undergo a myriad of acute complications, which in many cases, become chronic consequences of SCI. The treatment of SCI-induced cardiovascular disorders requires vigilance and active approaches to prevent or fully control its downstream effects. In the clinic, SCI individuals are usually subjected to constant monitoring of arterial blood pressure, heart rate, and any other signs that can aid clinicians determine to choose the appropriate treatment. Within 24–48 hours following SCI, admitted SCI patients are monitored for signs of severe hypotension and bradycardia that would indicate neurogenic shock (Hagen et al., 2011). In such cases, SCI individuals are treated accordingly with fluids, vasopressors (e.g., ephedrine), and atropine with adequate oxygenation if they exhibit a low heart rate. In addition to the implementation of pharmacological agents to

control and maintain adequate mean arterial pressure levels, non-pharmacological strategies are also implemented to assist with orthostatic intolerance and help maintain arterial blood pressure at the appropriate level. Such strategies include avoiding or monitoring intake of substances that would contribute to orthostatic hypotension such as caffeine, alcohol, diuretics, salt and fluid intake, meal size, posture elevation, or any stressors that can result in vasodilation. SCI patients receive physical therapy and functional electrical stimulation if appropriate for their condition in an effort to further help control their arterial pressure, decrease venous pooling in the lower extremities and prevent orthostatic intolerance upon movement or a postural change.

To prevent the occurrence of AD, closely monitoring potential aversive stimuli that could elicit an episode is often exploited in the clinic. Such potential triggers include bowel or bladder distension and skin irritation (pressure sores, tight clothing, pressure on skin). Thus, one takes measures to preventative these triggers, such as draining the bladder. Once an AD episode begins develops, individuals are maintained in a position in which their head and trunk are elevated to avoid pooling of the blood. Pharmacological agents, e.g., vasodilators and anesthetics, are administered to prevent an increase in arterial blood pressure and assist in controlling or blocking an unfavorable sympathetic response. Because AD has been correlated with sprouting-associated hyperexcited circuits caudal to the injury, developing a strategy to counter this increased neural activity may treat the hypertensive response in SCI patients. Along these lines, administration of gabapentin, a pharmacological anticonvulsant that mimics the inhibitory neurotransmitter GABA that also affects calcium channel function, reduces spontaneous AD events, probably due to inhibition of the excitatory activity (Rabchevsky et al., 2011).

Another potential therapy is using cell transplantation to reestablish SCI-damaged neuronal pathways and restore function. Olfactory ensheathing cells were transplanted into the lesion of injured spinal cord at level T₄ (Kalincik et al., 2010). Although the researchers did not observe a difference in the degree of CRD-induced hypertension, there was a difference in the duration of the response – they found the hypertension attenuated faster in the experimental group than in the control group. Recently, rat embryonic brainstem- or spinal cord-derived neural stem cells were grafted into a complete spinal cord transection adult model (Hou et al., 2013). After eight weeks, animals grafted with brainstem-derived cells exhibited full recovery of basal hemodynamics, and both stem cell grafts contributed to mitigated AD in response to CRD. Histological analysis revealed graft-derived cells differentiated into catecholaminergic and serotonergic neurons that predominantly projected to SPNs in the IML below the injury, possibly establishing a compensatory relay. Additionally, because disrupted brainstem-derived descending axons appear more prone to regrow (given appropriate supporting substrates and stimulation) than descending tracts originating from cortex, we may eventually be able to use cell transplantation as a bridge to promote targeted, functional axon regeneration of brainstem populations that normally innervate SPN and reestablish descending control of sympathetic activity. Therefore, cell transplantation is a promising strategy to repair supraspinal vasomotor pathways and lead to cardiovascular functional recovery after SCI.

Conclusion

Attention to cardiovascular dysfunction after SCI is increasing. Though we know that main contribution factors to AD include the interruption of supraspinal vasomotor pathways, primary and propriospinal plasticity, and a hyperreflexic sympathetic response, a complete understanding of the pathophysiological mechanisms underlying AD is still lacking. Because of the multi-faceted etiology of AD, the most effective therapy to permanently restore cardiovascular function following SCI will likely be a combination approach that includes pharmacological agents, neural protection, axon regeneration, and removal of aberrant plasticity.

Author contributions: EP, EM, SH, and VJT wrote the paper; EM and VJT made the figure. All authors approved the final version of the paper.

Conflicts of interest: None declared.

References

- Cameron AA, Smith GM, Randall DC, Brown DR, Rabchevsky AG (2006) Genetic manipulation of intraspinal plasticity after spinal cord injury alters the severity of autonomic dysreflexia. *J Neurosci* 26:2923-2932.
- Dampney RA, Tagawa T, Horiuchi J, Potts PD, Fontes M, Polson JW (2000) What drives the tonic activity of presympathetic neurons in the rostral ventrolateral medulla? *Clin Exp Pharmacol Physiol* 27:1049-1053.
- Furlan JC, Fehlings MG, Shannon P, Norenberg MD, Krassioukov AV (2003) Descending vasomotor pathways in humans: correlation between axonal preservation and cardiovascular dysfunction after spinal cord injury. *J Neurotrauma* 20:1351-1363.
- Garshick E, Kelley A, Cohen SA, Garrison A, Tun CG, Gagnon D, Brown R (2005) A prospective assessment of mortality in chronic spinal cord injury. *Spinal Cord* 43:408-416.
- Grigorean VT, Sandu AM, Popescu M, Iacobini MA, Stoian R, Neascu C, Strambu V, Popa F (2009) Cardiac dysfunctions following spinal cord injury. *J Med Life* 2:133-145.
- Guyenet PG, Haselton JR, Sun MK (1989) Sympathoexcitatory neurons of the rostroventrolateral medulla and the origin of the sympathetic vasomotor tone. *Prog Brain Res* 81:105-116.
- Hagen EM, Faerstrand S, Hoff JM, Rekand T, Gronning M (2011) Cardiovascular and urological dysfunction in spinal cord injury. *Acta Neurol Scand Suppl* 71-78.
- Hou S, Duale H, Rabchevsky AG (2009) Intraspinal sprouting of unmyelinated pelvic afferents after complete spinal cord injury is correlated with autonomic dysreflexia induced by visceral pain. *Neuroscience* 159:369-379.
- Hou S, Tom VJ, Graham L, Lu P, Blesch A (2013) Partial restoration of cardiovascular function by grafting embryonic neural stem cell grafts after complete spinal cord transection. *J Neurosci* 33:17138-17149.
- Hou S, Duale H, Cameron AA, Abshire SM, Lyttle TS, Rabchevsky AG (2008) Plasticity of lumbosacral propriospinal neurons is associated with the development of autonomic dysreflexia after thoracic spinal cord transection. *J Comp Neurol* 509:382-399.
- Jeske I, McKenna KE (1992) Quantitative analysis of bulbospinal projections from the rostral ventrolateral medulla: contribution of C1-adrenergic and nonadrenergic neurons. *J Comp Neurol* 324:1-13.
- Kalincik T, Choi EA, Feron F, Bianco J, Sutharsan R, Hayward I, Mackay-Sim A, Carrive P, Waite PM (2010) Olfactory ensheathing cells reduce duration of autonomic dysreflexia in rats with high spinal cord injury. *Auton Neurosci* 154:20-29.
- Karlsson AK (1999) Autonomic dysreflexia. *Spinal Cord* 37:383-391.
- Kerr FW, Alexander S (1964) Descending autonomic pathways in the spinal cord. *Arch Neurol* 10:249-261.
- Krassioukov AV, Claydon VE (2006) The clinical problems in cardiovascular control following spinal cord injury: an overview. *Prog Brain Res* 152:223-229.
- Krassioukov AV, Weaver LC (1995) Episodic hypertension due to autonomic dysreflexia in acute and chronic spinal cord-injured rats. *Am J Physiol* 268:2077-2083.
- Krassioukov AV, Weaver LC (1996) Morphological changes in sympathetic preganglionic neurons after spinal cord injury in rats. *Neuroscience* 70:211-225.
- Krassioukov AV, Johns DG, Schramm LP (2002) Sensitivity of sympathetically correlated spinal interneurons, renal sympathetic nerve activity, and arterial pressure to somatic and visceral stimuli after chronic spinal injury. *J Neurotrauma* 19:1521-1529.
- Krenz NR, Weaver LC (1998a) Changes in the morphology of sympathetic preganglionic neurons parallel the development of autonomic dysreflexia after spinal cord injury in rats. *Neurosci Lett* 243:61-64.
- Krenz NR, Weaver LC (1998b) Sprouting of primary afferent fibers after spinal cord transection in the rat. *Neuroscience* 85:443-458.
- Krenz NR, Meakin SO, Krassioukov AV, Weaver LC (1999) Neutralizing intraspinal nerve growth factor blocks autonomic dysreflexia caused by spinal cord injury. *J Neurosci* 19:7405-7414.
- Krum H, Howes LG, Brown DJ, Ungar G, Moore P, McNeil JJ, Louis WJ (1992) Risk factors for cardiovascular disease in chronic spinal cord injury patients. *Paraplegia* 30:381-388.
- Laird AS, Carrive P, Waite PM (2006) Cardiovascular and temperature changes in spinal cord injured rats at rest and during autonomic dysreflexia. *J Physiol* 577:539-548.
- Lavdas AA, Blue ME, Lincoln J, Parnavelas JG (1997) Serotonin promotes the differentiation of glutamate neurons in organotypic slice cultures of the developing cerebral cortex. *J Neurosci* 17:7872-7880.
- Lebedev VP, Krasnyukov AV, Nikitin SA (1986) Electrophysiological study of sympathoexcitatory structures of the bulbar ventrolateral surface as related to vasomotor regulation. *Neuroscience* 17:189-203.
- Lee BB, Cripps RA, Fitzharris M, Wing PC (2014) The global map for traumatic spinal cord injury epidemiology: update 2011, global incidence rate. *Spinal cord* 52:110-116.
- Lehmann KG, Lane JG, Piepmeyer JM, Batsford WP (1987) Cardiovascular abnormalities accompanying acute spinal cord injury in humans: incidence, time course and severity. *J Am Coll Cardiol* 10:46-52.
- Lindan R, Joiner E, Freehafer AA, Hazel C (1980) Incidence and clinical features of autonomic dysreflexia in patients with spinal cord injury. *Paraplegia* 18:285-292.
- Loewy AD, Spyer KM (1990) Central regulation of autonomic functions. New York: Oxford University Press.
- Maierov DN, Weaver LC, Krassioukov AV (1997) Relationship between sympathetic activity and arterial pressure in conscious spinal rats. *Am J Physiol* 272:H625-631.
- Marsh DR, Wong ST, Meakin SO, MacDonald JI, Hamilton EF, Weaver LC (2002) Neutralizing intraspinal nerve growth factor with a trkA-IgG fusion protein blocks the development of autonomic dysreflexia in a clip-compression model of spinal cord injury. *J Neurotrauma* 19:1531-1541.
- Mathias CJ (2003) Autonomic diseases: management. *J Neurol Neurosurg Psychiatry* 74 Suppl 3:iii42-47.
- Mathias CJ, Frankel HL, Christensen NJ, Spalding JM (1976) Enhanced pressor response to noradrenaline in patients with cervical spinal cord transection. *Brain* 99:757-770.
- Mazzeo F, Santamaria S, Iavarone A (2015) "Boosting" in paralympic athletes with spinal cord injury: doping without drugs. *Funct Neurol* 30:91-98.
- Miyazato M, Oshiro T, Chancellor MB, de Groat WC, Yoshimura N, Saito S (2013) An alpha1-adrenoceptor blocker terazosin improves urine storage function in the spinal cord in spinal cord injured rats. *Life Sci* 92:125-130.
- Nathan PW, Smith MC (1987) The location of descending fibres to sympathetic preganglionic vasomotor and sudomotor neurons in man. *J Neurol Neurosurg Psychiatry* 50:1253-1262.
- Rabchevsky AG (2006) Segmental organization of spinal reflexes mediating autonomic dysreflexia after spinal cord injury. *Prog Brain Res* 152:265-274.
- Rabchevsky AG, Patel SP, Duale H, Lyttle TS, O'Dell CR, Kitzman PH (2011) Gabapentin for spasticity and autonomic dysreflexia after severe spinal cord injury. *Spinal Cord* 49:99-105.
- Ruggiero DA, Cravo SL, Arango V, Reis DJ (1989) Central control of the circulation by the rostral ventrolateral reticular nucleus: anatomical substrates. *Prog Brain Res* 81:49-79.
- Strack AM, Sawyer WB, Hughes JH, Platt KB, Loewy AD (1989) A general pattern of CNS innervation of the sympathetic outflow demonstrated by transneuronal pseudorabies viral infections. *Brain Res* 491:156-162.
- Thijssen DH, De Groot PC, van den Bogerd A, Veltmeijer M, Cable NT, Green DJ, Hopman MT (2012) Time course of arterial remodelling in diameter and wall thickness above and below the lesion after a spinal cord injury. *Eur J Appl Physiol* 112:4103-4109.
- Weaver LC, Cassam AK, Krassioukov AV, Llewellyn-Smith IJ (1997) Changes in immunoreactivity for growth associated protein-43 suggest reorganization of synapses on spinal sympathetic neurons after cord transection. *Neuroscience* 81:535-551.
- Wecht JM, De Meersman RE, Weir JP, Spungen AM, Bauman WA (2003) Cardiac autonomic responses to progressive head-up tilt in individuals with paraplegia. *Clin Auton Res* 13:433-438.
- Winslow EB, Lesch M, Talano JV, Meyer PR, Jr. (1986) Spinal cord injuries associated with cardiopulmonary complications. *Spine (Phila Pa 1976)* 11:809-812.