

AWARD NUMBER: W81XWH-14-1-0478

TITLE: Novel Therapeutic Approaches for the Treatment of Depression and Cognitive Deficits in a Rodent Model of Gulf War Veterans' Illness

PRINCIPAL INVESTIGATOR: Dr. Laxmikant S. Deshpande

CONTRACTING ORGANIZATION: Virginia Commonwealth University  
Richmond, VA 23298

REPORT DATE: October 2017

TYPE OF REPORT: Annual

PREPARED FOR: U.S. Army Medical Research and Materiel Command  
Fort Detrick, Maryland 21702-5012

DISTRIBUTION STATEMENT: Approved for Public Release;  
Distribution Unlimited

The views, opinions and/or findings contained in this report are those of the author(s) and should not be construed as an official Department of the Army position, policy or decision unless so designated by other documentation.

# REPORT DOCUMENTATION PAGE

*Form Approved*  
*OMB No. 0704-0188*

Public reporting burden for this collection of information is estimated to average 1 hour per response, including the time for reviewing instructions, searching existing data sources, gathering and maintaining the data needed, and completing and reviewing this collection of information. Send comments regarding this burden estimate or any other aspect of this collection of information, including suggestions for reducing this burden to Department of Defense, Washington Headquarters Services, Directorate for Information Operations and Reports (0704-0188), 1215 Jefferson Davis Highway, Suite 1204, Arlington, VA 22202-4302. Respondents should be aware that notwithstanding any other provision of law, no person shall be subject to any penalty for failing to comply with a collection of information if it does not display a currently valid OMB control number.  
**PLEASE DO NOT RETURN YOUR FORM TO THE ABOVE ADDRESS.**

<b>1. REPORT DATE</b> October 2017	<b>2. REPORT TYPE</b> Annual	<b>3. DATES COVERED</b> 29Sep2016 - 28Sep2017
---------------------------------------	---------------------------------	--

<b>4. TITLE AND SUBTITLE</b> Novel Therapeutic Approaches for the Treatment of Depression and Cognitive Deficits in a Rodent Model of Gulf War Veterans' Illness	<b>5a. CONTRACT NUMBER</b>
	<b>5b. GRANT NUMBER</b> W81XWH-14-1-0478
	<b>5c. PROGRAM ELEMENT NUMBER</b>

<b>6. AUTHOR(S)</b> Dr. Laxmikant S. Deshpande  Email: laxmikant.deshpande@vcuhealth.org	<b>5d. PROJECT NUMBER</b>
	<b>5e. TASK NUMBER</b>
	<b>5f. WORK UNIT NUMBER</b>

<b>7. PERFORMING ORGANIZATION NAME(S) AND ADDRESS(ES)</b> VIRGINIA COMMONWEALTH UNIVERSITY 912 W FRANKLIN ST RICHMOND, VA 23284-9040	<b>8. PERFORMING ORGANIZATION REPORT NUMBER</b>
---	---

<b>9. SPONSORING / MONITORING AGENCY NAME(S) AND ADDRESS(ES)</b> U.S. Army Medical Research and Materiel Command Fort Detrick, Maryland 21702-5012	<b>10. SPONSOR/MONITOR'S ACRONYM(S)</b>
	<b>11. SPONSOR/MONITOR'S REPORT NUMBER(S)</b>

**12. DISTRIBUTION / AVAILABILITY STATEMENT**  
Approved for Public Release; Distribution Unlimited

**13. SUPPLEMENTARY NOTES**

**14. ABSTRACT**  
About 1/3rd of the Persian Gulf War veterans' exhibit Gulf War Illness (GWI) symptoms, particularly depression, and memory deficits. Chronic exposure to organophosphates (OP) is among multiple causes for GWI, yet its pathobiology remains ill understood. The role of calcium (Ca<sup>2+</sup>) signaling in memory and mood is well established. In an OP- diisopropyl fluorophosphate (DFP) based rat model of GWI, we observed disruptions in neuronal Ca<sup>2+</sup> levels ([Ca<sup>2+</sup>]<sub>i</sub>). This study is aimed at identifying mechanisms underlying elevated [Ca<sup>2+</sup>]<sub>i</sub> and investigating whether their therapeutic targeting could improve GWI neurological morbidities. Sustained Ca<sup>2+</sup> elevations in GWI neurons had their origin in Ca<sup>2+</sup> release from intracellular Ca<sup>2+</sup> stores, since the application of ryanodine/ IP<sub>3</sub> receptor antagonist dantrolene or levetiracetam produced greater than 50% reduction in their levels. Treatment with levetiracetam significantly improved symptoms of depression and anxiety in GWI rats. Since Ca<sup>2+</sup> is a major second messenger molecule, such chronic increases in its levels could produce pathological synaptic plasticity that expresses itself as GWI morbidities. Our studies show that treatment with drugs targeted at blocking intracellular Ca<sup>2+</sup> release could be effective therapies for GWI.

**15. SUBJECT TERMS**  
Gulf War Illness, Organophosphate, diisopropyl fluorophosphate (DFP), neurological morbidities, neuronal injury, Sprague-Dawley rats, Calcium imaging, Fura-2, Calcium-induced Calcium Release,

<b>16. SECURITY CLASSIFICATION OF:</b>			<b>17. LIMITATION OF ABSTRACT</b>  UU	<b>18. NUMBER OF PAGES</b>  20	<b>19a. NAME OF RESPONSIBLE PERSON</b> USAMRMC
<b>a. REPORT</b>  U	<b>b. ABSTRACT</b>  U	<b>c. THIS PAGE</b>  U			<b>19b. TELEPHONE NUMBER</b> (include area code)

## Table of Contents

	<u>Page</u>
1. Introduction.....	4
2. Keywords.....	4
3. Accomplishments.....	4
4. Impact.....	16
5. Changes/Problems.....	17
6. Products.....	17
7. Participants & Other Collaborating Organizations.....	17
8. Special Reporting Requirements.....	18
9. Appendices.....	18

## **1. Introduction**

Approximately 1/3<sup>rd</sup> of returning soldiers deployed during the Persian Gulf War exhibit chronic multi-symptom illnesses also known as the Gulf War Illness (GWI). There are several confounding factors attributed to the development of GWI, and after reviewing all of the available data, the Research Advisory Committee on Gulf War Veterans' Illnesses has strongly implicated exposure to organophosphates (OPs) as one of the leading cause for GWI [1,2]. Diisopropyl fluorophosphate (DFP) is an OP compound that is used in civilian laboratories as a surrogate nerve gas agent [3,4]. We have used this agent to mimic OP exposure during Gulf War deployment and have observed depressive symptoms and cognitive deficits in rats exposed to repeated, low-dose DFP exposure [3,5]. The hippocampus plays a major role in the limbic system, is essential in memory functioning [6] and plays a major role in pathophysiology of depression [7]. Studies have shown hippocampal dysfunction in Gulf War veterans using both imaging and neuropsychological testing [8-10]. OP-based animal models of GWI have also demonstrated hippocampal and striatal neuronal loss, inflammation, and reduced synaptic transmission underlying the expression of anxiety, mood and memory deficits [11-15]. Thus, hippocampus is an important brain area to investigate in GWI. Calcium is a major second messenger and plays a vital role in cellular signaling, in developing neuronal plasticity which affects behavior, and memory [16,17]. Brief elevations in  $Ca^{2+}$  levels are critical to cellular communication and long-term potentiation (learning and memory consolidation). However, our research and that of other investigators have demonstrated that sustained  $Ca^{2+}$  elevations particularly in the hippocampal region are detrimental to the cell and are implicated in many neurological disorders that shares symptomatology with GWI neurological morbidities. There has been recent evidence that  $Ca^{2+}$ -induced  $Ca^{2+}$  release (CICR), which principally consists of the inositol-trisphosphate receptor (IP<sub>3</sub>R) and the ryanodine receptor (RyR), plays a distinct role in memory processing and disease state [17-20]. But at present, the role of CICR signaling system in the development of depression and cognitive impairments in GWI is unknown and will be investigated in these studies using a rodent model of GWI developed in our laboratory [3].

## **2. Keywords**

Gulf War Illness, Organophosphate, diisopropyl fluorophosphate (DFP), neurological morbidities, Sprague-Dawley rats, Calcium imaging, Fura-2, Calcium-induced Calcium Release, Dantrolene, Levetiracetam, H-89, U-73122

## **3. Accomplishments:**

The following lists the accomplishments from our project during the year-3 (2016-2017).

### **3.1 What were the major goals of the project?**

The major goals of the projects for year 3 were to identify molecular mechanisms underlying elevated calcium levels observed in hippocampal neurons from GWI rats (year-2). In addition, we also investigated whether blocking these mechanisms will provide relief from the symptoms of depression and anxiety and related neurological co-morbidities in our rat model of GWI.

### **3.2 What was accomplished under these goals?**

We measured intracellular calcium levels, studied mechanisms of  $Ca^{2+}$  entry, handling of the intracellular calcium-induced calcium release (CICR) mechanisms in GWI rats displaying

anxiety, depression and cognitive deficits. Effects of drugs targeting the CICR components in relieving GWI neurological morbidities were also investigated.

### **I. DFP exposure**

DFP was prepared fresh daily by dissolving in ice-cold phosphate buffered saline just before the exposure. Rats were injected with DFP (0.5 mg/kg, s.c., 1x daily for 5-days). Control rats received DFP vehicle injections for the same period. Animal health including weight measurement were assessed every day during the exposure and for the next seven days following the end of DFP injections.

**II. Estimation of hippocampal intra-neuronal  $\text{Ca}^{2+}$  levels:** In these experiments, control and GWI rats at various time-points post-DFP exposures were utilized to estimate intracellular  $\text{Ca}^{2+}$  levels. Briefly, rats were decapitated, brains removed and hippocampal slices obtained on a vibrotome. Following enzymatic treatment, hippocampus was removed and triturated to generate a neuronal suspension. Calcium levels were measured using microfluorimetry. These steps are described below:

#### **II a. Isolation of Hippocampal CA1 Neurons and Loading with Fura-2**

Acute isolation of CA1 hippocampal neurons was performed by established procedures routinely used in our laboratory [4,21]. Animals were anesthetized with isoflurane and decapitated. Brains were rapidly dissected and placed in 4°C oxygenated (95% O<sub>2</sub>/5% CO<sub>2</sub>) artificial cerebrospinal fluid (aCSF) consisting of (in mM): 201.5 sucrose, 10 glucose, 1.25 NaH<sub>2</sub>PO<sub>4</sub>, 26 NaHCO<sub>3</sub>, 3 KCl, 7 MgCl<sub>2</sub>, and 0.2 CaCl<sub>2</sub>. MK-801 (1 μM) was added to all solutions to increase cell viability and was removed 15 min prior to imaging. Hippocampal slices (450 μm) were cut on a vibrating microtome (Leica Microsystems, Wetzlar, Germany) and then equilibrated for 10 min at 34°C in a piperazine-N,N'-bis[2-ethanesulfonic acid] (PIPES)-aCSF solution containing (in mM): 120 NaCl, 25 glucose, 20 PIPES, 5 KCl, 7 MgCl<sub>2</sub>, and 0.1 CaCl<sub>2</sub>. Slices were then treated with 8 mg/ml protease in PIPES-aCSF for 6 min at 34°C and rinsed. Enzyme treated slices were visualized on a dissecting microscope to excise the CA1 hippocampal layer which was then triturated with a series of Pasteur pipettes of decreasing diameter in cold (4°C) PIPES-aCSF solution containing 1 μM Fura-2 AM (Invitrogen, Carlsbad, CA). The cell suspension was placed in the middle of 2 well glass-bottomed chambers (Nunc, Thermo Scientific). These glass chambers were previously treated overnight with 0.05 mg/ml poly-L-lysine followed by multiple rinses with distilled water and then further treated with Cell-Tak™ (BD-Biosciences, San Jose, CA) biocompatible cellular adhesive (3.5 μg/cm<sup>2</sup>) for 30-min, rinsed and air-dried. Neuronal suspension placed in the center of adhesive coated dishes when settled firmly adhered to the bottom. This technique simplified further manipulations on the dissociated neurons. Plates were then incubated at 37°C in a 5% CO<sub>2</sub>/95% air atmosphere for 45 min. Fura-2 was washed off with PIPES-aCSF and plates were incubated an additional 15 min to allow for complete cleavage of the AM moiety from Fura-2.

#### **II b. Measurement of $[\text{Ca}^{2+}]_i$**

Fura-2 loaded cells were transferred to a 37°C heated stage (Harvard Apparatus, Hollington, MA) on an Olympus IX-70 inverted microscope coupled to a fluorescence imaging system (Olympus America, Center Valley, PA) and subjected to  $[\text{Ca}^{2+}]_i$  measurements by procedures

well established in our laboratory [4,21]. All experiments were performed using a 20X, 0.7 N.A. water immersion objective and images were recorded by an ORCA-ER high-speed digital CCD camera (Hamamatsu Photonics K.K., Japan). Fura-2 was excited with a 75 W xenon arc lamp (Olympus America, Center Valley, PA). Ratio images were acquired by alternating excitation wavelengths (340/380 nm) by using a Lambda 10-2 filter wheel (Sutter Instruments Co., Novato, CA) and a Fura filter cube at 510/540 emission with a dichroic at 400 nm. All image acquisition and processing was controlled by a computer connected to the camera and filter wheel using Metafluor Software ver 7.6 (MDS Analytical Technologies, Downingtown, PA). Image pairs were captured every 5s and the images at each wavelength were averaged over 10 frames. Background fluorescence is obtained by imaging a field lacking Fura-2. Hippocampal CA1 neurons were identified based on their distinct morphology. These neurons displayed pyramidal shaped cell body, long axon and dendrites and have been demonstrated to be devoid of immunoreactivity for specific protein markers for interneurons, including parvalbumin, cholecystokinin, vasoactive intestinal peptide, somatostatin, and neuropeptide Y. The process of enzymatic treatment and mechanical trituration can add minimal stress during acute dissociation of neurons. However, we have shown previously that the neurons isolated using these procedures exhibit electrophysiological properties identical neurons in slices or in cultures, are viable, and not apoptotic or necrotic.

### **II c. Calcium calibration**

We performed  $\text{Ca}^{2+}$  calibration determinations as described previously [4,21,22] to provide estimates of absolute  $[\text{Ca}^{2+}]_i$  concentrations from the 340/380 ratio values. A  $\text{Ca}^{2+}$  calibration curve was constructed using solutions of calibrated  $\text{Ca}^{2+}$  buffers ranging from 0  $\text{Ca}^{2+}$  ( $\text{Ca}^{2+}$  free) to 39  $\mu\text{M}$   $\text{Ca}^{2+}$  (Invitrogen, Carlsbad, CA). Values from the calibration curve were used to convert fluorescent ratios to  $[\text{Ca}^{2+}]_i$ . Final  $[\text{Ca}^{2+}]_i$  were calculated from the background corrected 340/380 ratios using the Grynkiewicz equation:

$$[\text{Ca}^{2+}]_i = (\text{K}_d \times \text{Sf}_2 / \text{Sb}_2) \times (\text{R} - \text{R}_{\min}) / (\text{R}_{\max} - \text{R})$$

where R was the 340/380 ratio at any time;  $\text{R}_{\max}$  was the maximum measured ratio in saturating  $\text{Ca}^{2+}$  solution (39  $\mu\text{M}$  free  $\text{Ca}^{2+}$ );  $\text{R}_{\min}$  was the minimal measured ratio  $\text{Ca}^{2+}$  free solution;  $\text{Sf}_2$  was the absolute value of the corrected 380-nm signal at  $\text{R}_{\min}$ ;  $\text{Sb}_2$  was the absolute value of the corrected 380-nm signal at  $\text{R}_{\max}$ ; the  $\text{K}_d$  value for Fura 2 was 224 nM.

### **III. Behavioral screening assays:**

Amongst the GWI morbidities, the neurological deficits such as chronic depression, anxiety and memory impairments are predominant ones. To investigate whether treatment with CICR drugs such as dantrolene and levetiracetam would lead to reduction in the expression of GWI psychiatric abnormalities, we conducted a battery of rodent behavioral assays that identify symptoms of depression, anxiety and cognitive deficits following DFP exposures. Testing was carried out in a quiet, dimly lit room between 0800 to 1400 hrs. Depression was assessed using the Forced Swim Test (FST), and the Elevated Plus Maze (EPM). Memory function was assessed using the Novel Object Recognition (NOR). These tests were described recently in our paper on GWI model development [3,5]. Dantrolene (10 mg/kg, i.p.), Levetiracetam (50 mg/kg, i.p.), H-89 (2 mg/kg, i.p.), and U-73122 (30 mg/kg, i.p.) were administered 30-mins before the behavioral assays.

#### **IV. Data analysis**

For comparing the distributions of  $[Ca^{2+}]_i$  levels a Chi-square test was used. Data were analyzed and graphs plotted using the SigmaPlot 12.5 software (SPSS Inc, Chicago, IL). All the data that passed the normality test was further subjected to t-test. A value of  $p < 0.05$  was considered significant for all data analyses.

#### **V. Results**

##### ***V. a Estimations of hippocampal neuronal $[Ca^{2+}]_i$***

CA1 neurons from GWI rats manifested  $[Ca^{2+}]_i$  of  $399 \pm 26$  nM, that were significantly higher than  $[Ca^{2+}]_i$  from age-matched control rats ( $208 \pm 16$  nM) ( $p < 0.05$ , one-way ANOVA,  $n = 8$  animals). Analysis of the population distributions of  $[Ca^{2+}]_i$  revealed only 2% of age-matched control neurons exhibited  $[Ca^{2+}]_i$  greater than 500 nM. In contrast, ~50% neurons isolated from GWI rats exhibited  $[Ca^{2+}]_i$  between 250-500 nM and ~18% neurons exhibited  $[Ca^{2+}]_i$  greater than 500 nM, indicating a significant right-ward population shift towards higher  $[Ca^{2+}]_i$  concentration range ( $p < 0.001$ , Chi-square test,  $n = 161$  neurons, Fig. 1A, 1B, and 1C).

##### ***V. b Mechanism for elevated hippocampal neuronal $[Ca^{2+}]_i$ following DFP exposures***

Application of nifedipine (5  $\mu$ M), DNQX (10  $\mu$ M), or  $GdCl_3$  (100  $\mu$ M) did not significantly affect  $[Ca^{2+}]_i$  in GWI neurons. In contrast, application of dantrolene (50  $\mu$ M) or levetiracetam (100  $\mu$ M) significantly lowered elevated  $[Ca^{2+}]_i$  in GWI neurons ( $240 \pm 11$  nM and  $250 \pm 19$  nM respectively,  $n = 5$  animals,  $p < 0.05$ , t-test, Fig. 2A, 2B).

##### ***V. c Effect of CICR inhibitors on GWI neurological morbidities***

Having identified CICR as a source of elevated  $[Ca^{2+}]_i$  in GWI neurons, we investigated whether targeted blockade of this mechanism would also provide relief from the symptoms of GWI neuropsychiatric abnormalities. CICR is manned by two receptor subtypes: IP3R and RyR. Dantrolene is a specific RyR antagonist, while levetiracetam is a mixed CICR inhibitor. H-89 is PKA inhibitor that would prevent phosphorylation of RyRs and U-73122 is PLC $\gamma$  inhibitor, which would lower IP3 production. Interestingly, all these agents produced varying effects on GWI morbidities. Unfortunately, effects of Dantrolene could not be separated from its effects on muscular relaxation. However, levetiracetam produced the most profound effect on the GWI behavior. Given that levetiracetam is also a FDA approved drug, it raises the possibility that it could be made available for GWI veterans following a fast-track FDA review. Below, we have included results from our levetiracetam studies. All the drug studies data will be included again in the Final Report.

##### ***Performance on FST***

The FST is an effective test in evaluating the presence of a despair-like state in the DFP exposed rats. GWI rats subjected to FST exhibited increased immobility time of  $127.12 \pm 11.69$  s indicative of a despair-like state. In the presence of levetiracetam (50 mg/kg, i.p.) there was a significant reduction in immobility time ( $81.08 \pm 6.97$  s) ( $n = 6$ ,  $p < 0.05$ , Fig. 3A).

##### ***Performance on EPM***

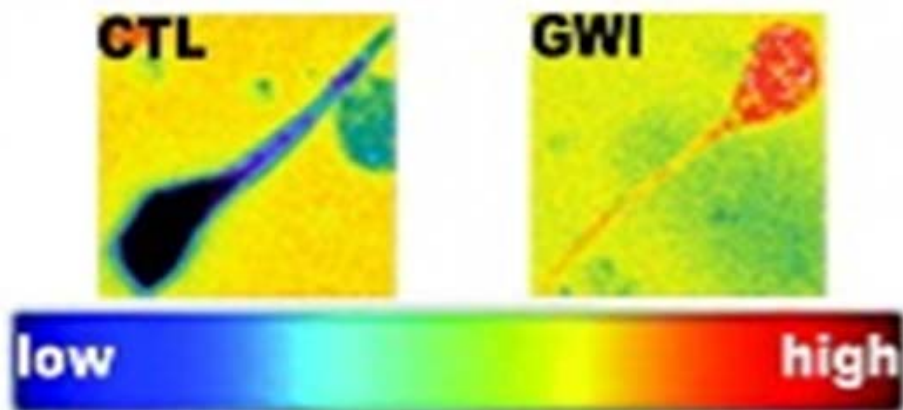
DFP exposed rats also displayed symptoms of anxiety when subjected to EPM test. Repeated, low-dose DFP rats (0.5 mg/kg, 5-days) displayed increased anxiety as characterized by

significantly lower performance in the open arm of the EPM (time in open arm:  $16.9 \pm 2.5\%$  in controls vs  $5.28 \pm 1.7\%$  in 0.5 DFP exposed rats) indicating the presence of symptoms of anxiety. In the presence of levetiracetam (50 mg/kg, i.p.) a significant ( $p < 0.05$ ,  $n = 6$  rats) anxiolytic effect was observed in the GWI group as identified by an improvement in time spent in the open-arm of EPM which was not significantly different from control group (time in open arm:  $16.9 \pm 2.5\%$  in controls vs  $14.2 \pm 2.7\%$  in GWI rats, Fig. 3B).

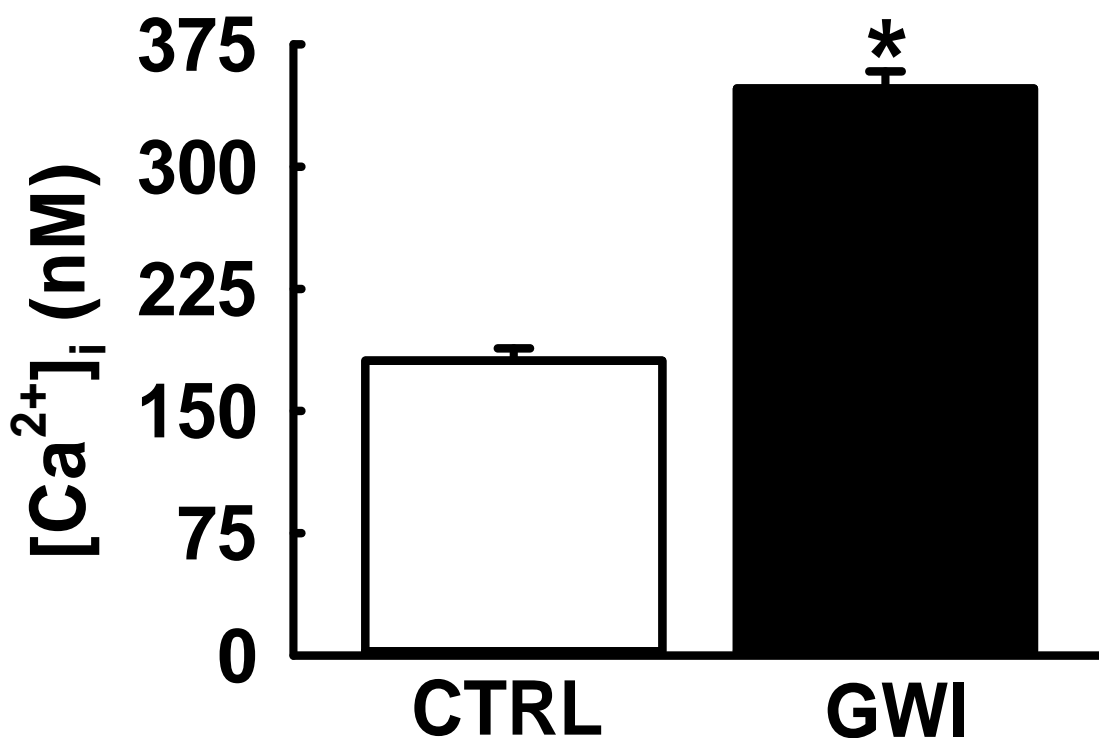
### ***Performance on NOR***

The NOR test revealed deficits in recognition memory in DFP exposed rats. In the choice phase of NOR, repeated, low-dose DFP rats (0.5 mg/kg, 5-days) spent more time exploring the old object compared to the new object indicating that these rats did not remember the familiar object. These rats exhibited a discrimination ratio of  $0.47 \pm 0.08$ , indicative of impaired recognition memory that was significantly lower compared to age matched control rats ( $0.86 \pm 0.05$ ,  $n = 6$ ,  $p < 0.05$ ). In the presence of levetiracetam (50 mg/kg, i.p.) a significant improvement on NOR performance was observed (discrimination ratio:  $0.72 \pm 0.06$ , Fig. 3C).

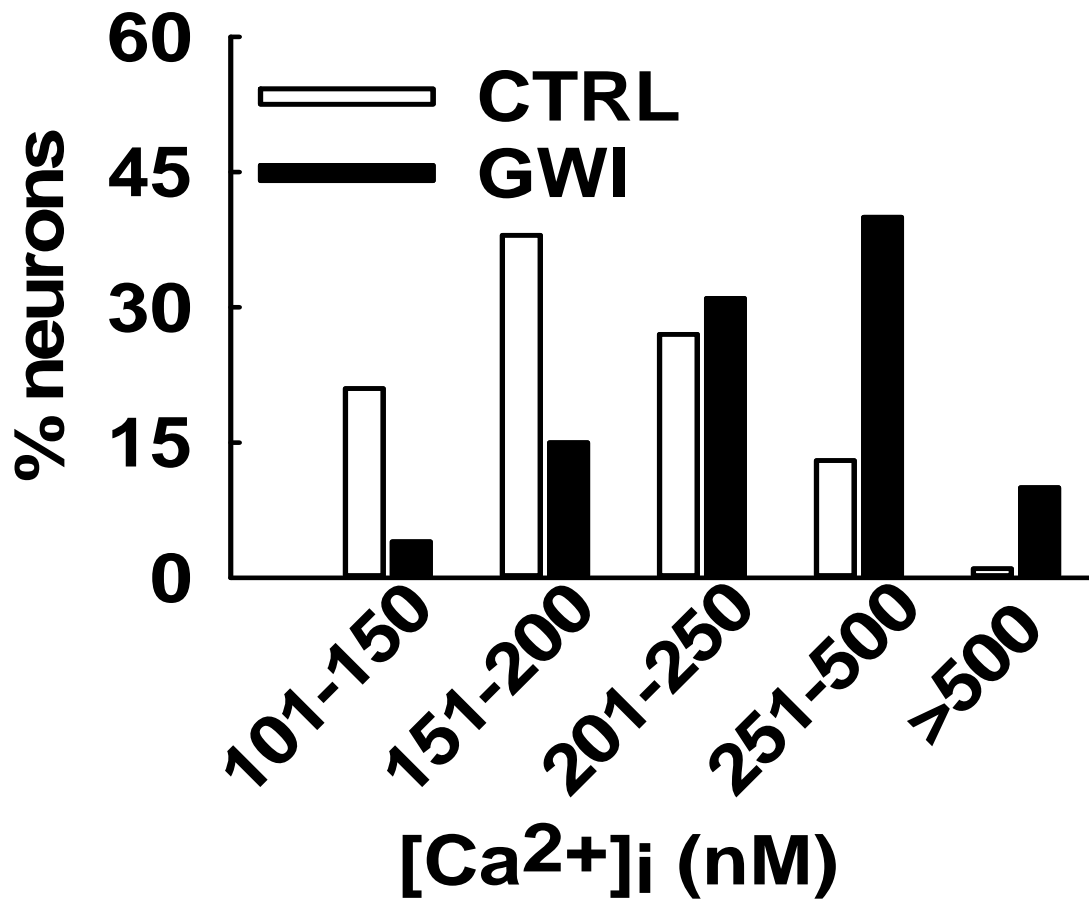




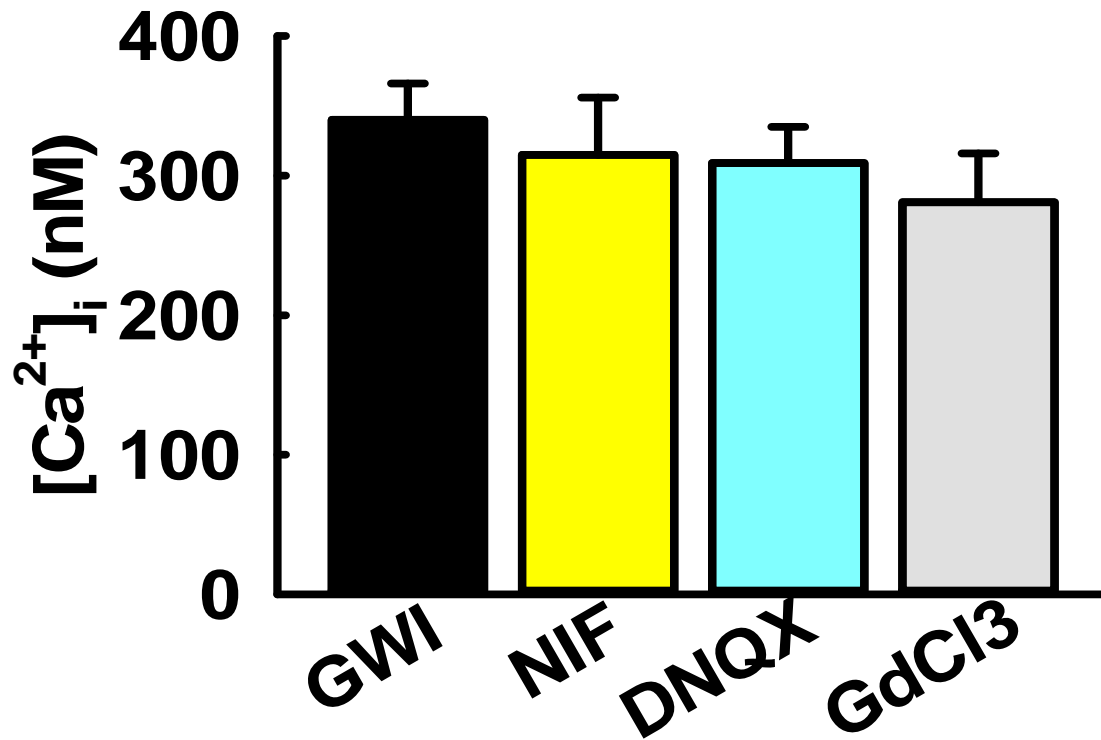
**Figure 1A.** Pseudocolor images of CA1 hippocampal neurons acutely isolated from GWI rats and age-matched control animals.



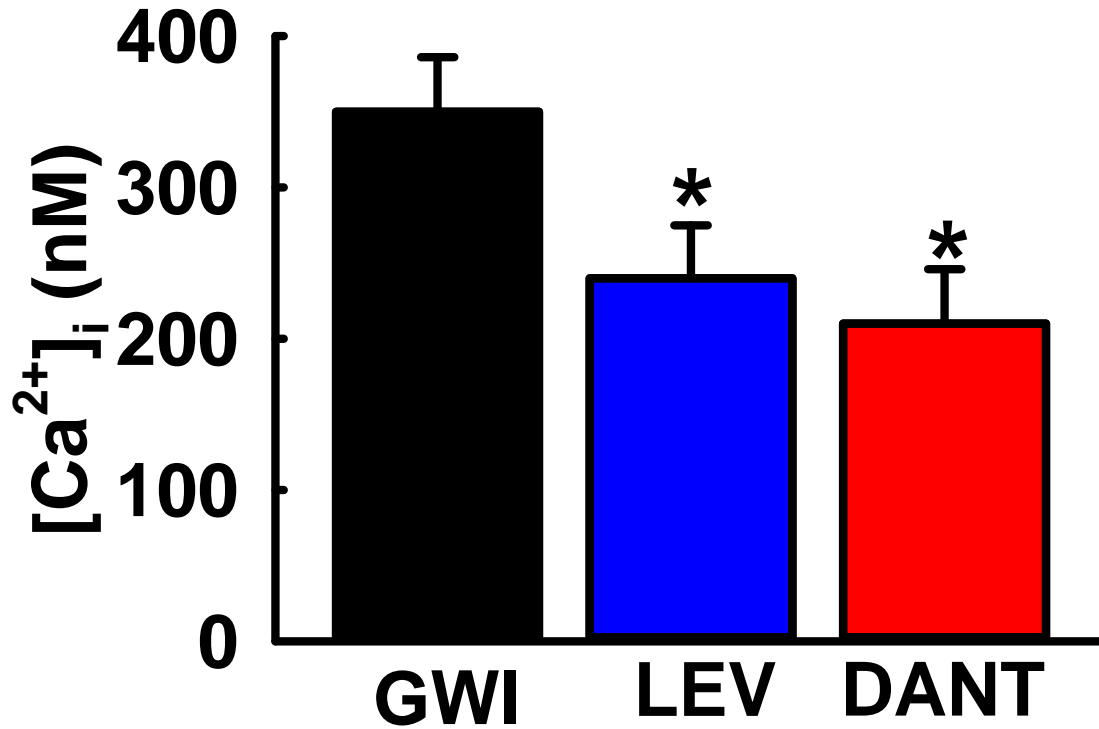
**Figure 1B.** Elevated  $[Ca^{2+}]_i$  in CA1 hippocampal neurons acutely isolated from GWI rats compared to neurons from age-matched control animals. Neuronal  $Ca^{2+}$  levels in GWI rats were significantly higher compared to age matched control rats. Data expressed as mean  $\pm$  SEM, \* $p < 0.05$ , t-test,  $n = 7$  rats.



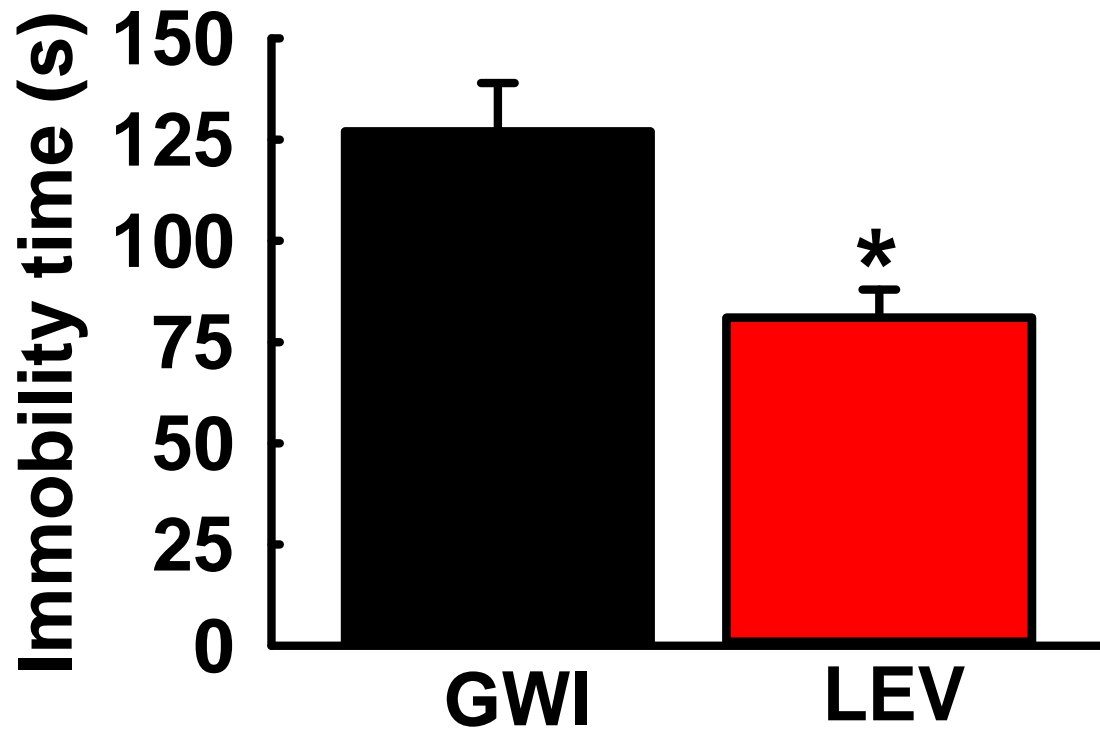
**Figure 1C.** Distribution of  $[Ca^{2+}]_i$  for control and GWI CA1 hippocampal neurons. Control neurons demonstrated a normal distribution for  $[Ca^{2+}]_i$  with approximately 95% of neurons exhibiting  $[Ca^{2+}]_i$  less than 500 nM and only 5% neurons exhibiting very high  $[Ca^{2+}]_i$ . In contrast, neurons from GWI rats demonstrated a rightward shift towards higher  $[Ca^{2+}]_i$  with approximately 50% neurons exhibiting  $[Ca^{2+}]_i$  greater than 500 nM (n= 161 neurons).



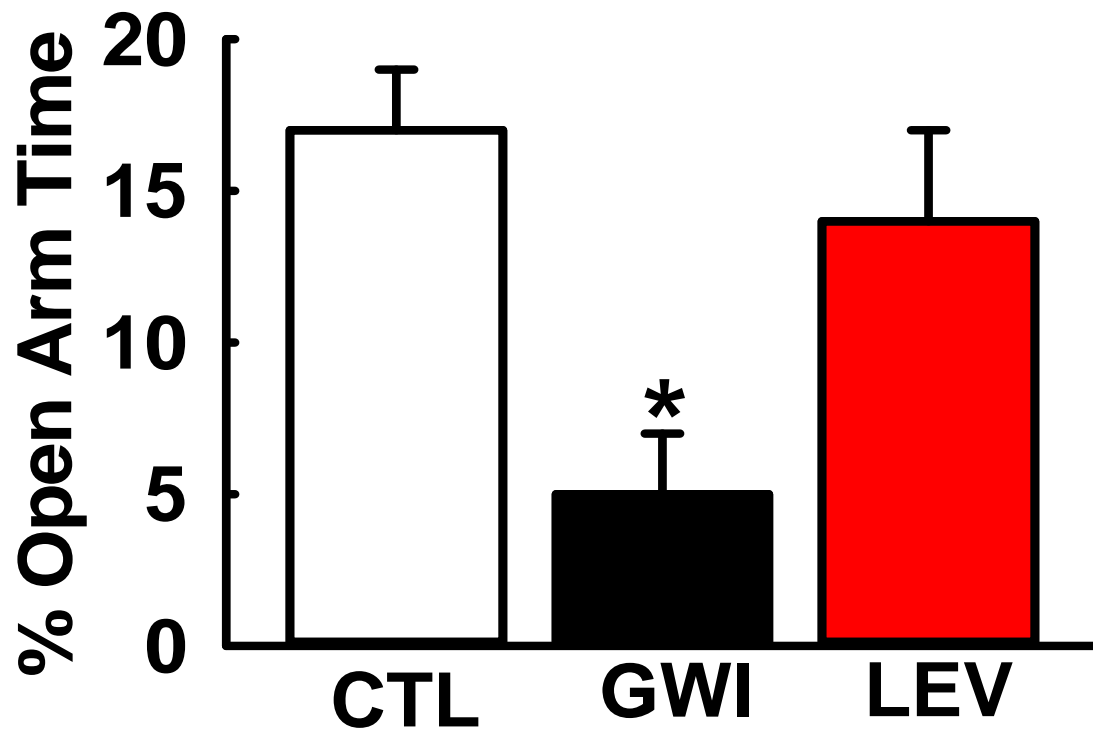
**Figure 2A.** Mechanism of  $Ca^{2+}$  plateau following DFP exposure. CA1 hippocampal  $[Ca^{2+}]_i$  from GWI rats (black bar) were not significantly altered in the presence of nifedipine (NIF, 5  $\mu$ M), or DNQX (10  $\mu$ M) or GdCl3 (100  $\mu$ M) (n= 5-6 animals for each treatment). Data represented as mean  $\pm$  SEM.



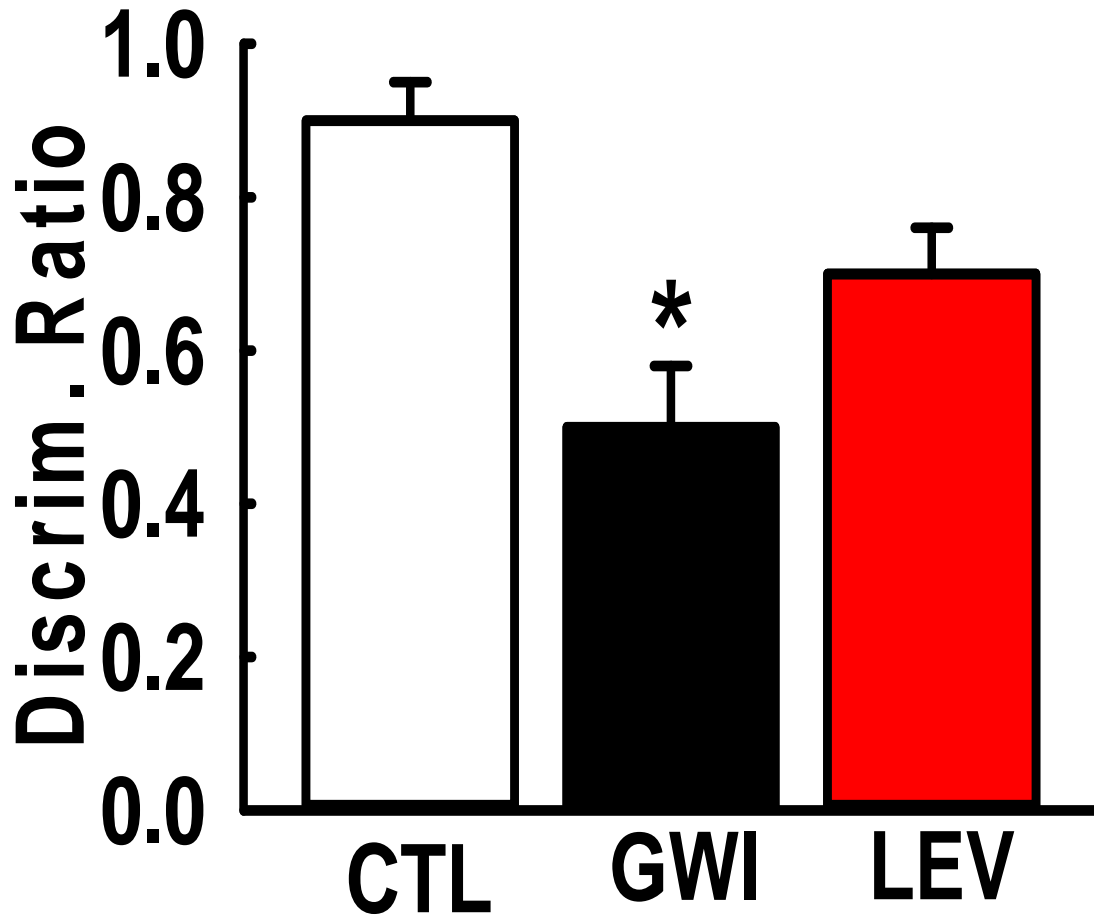
**Figure 2B.** Mechanism of Ca<sup>2+</sup> plateau following DFP exposure. CA1 hippocampal [Ca<sup>2+</sup>]<sub>i</sub> from GWI rats (black bar) were significantly lowered in the presence of dantrolene (DANT, 50 μM, blue bar) or levetiracetam (LEV, 100 μM, red bar) (\*p<0.05, compared to GWI, one-way ANOVA, post-hoc Tukey test, n= 5-6 animals for each treatment). Data represented as mean ± SEM.



**Figure 3A.** Antidepressant Effects of Levetiracetam. The immobility time in GWI rats was significantly lowered in the presence of levetiracetam (LEV, 50 mg/kg, i.p.) indicative of a robust antidepressant-like effect. Data expressed as mean  $\pm$  SEM, \* $p$ <0.05, t-test,  $n$ = 6 rats.



**Figure 3B.** Anxiolytic Effects of Levetiracetam. GWI rats when tested in the EPM task displayed significantly lower open arm time compared to age-matched control rats indicative of increased anxiety. In the presence of levetiracetam (LEV, 50 mg/kg, i.p.), GWI rats showed a significantly increased exploration of the open-arm suggesting an anxiolytic effect. Data expressed as mean  $\pm$  SEM, \* $p$ <0.05, t-test,  $n$ = 6 rats.



**Figure 3C.** Effect of Levetiracetam on Memory. GWI rats exhibited a significantly lower discrimination ratio on the NOR test indicative of impaired recognition memory compared to a higher discrimination ratio observed in age matched control rats. In the presence of levetiracetam (LEV, 50 mg/kg, i.p.), there was a significant improvement in the memory performance as indicated by discrimination ratios that were significantly higher than GWI rats. Data expressed as mean  $\pm$  SEM, \* $p$ <0.05, t-test,  $n$ = 6 rats.

### **3.3. What opportunities for training and professional development has the project provided?**

The GWIRP grant has allowed me to engage high school and undergraduate students in research and spark an interest in GWI research. My laboratory actively participates in VCU Summer Research Program. By informing the young students of GW history, sacrifices made by our Veterans, and how they can make a difference in the lives of GWI suffering Veterans by participating in our research program, my laboratory makes an attempt to get new generation of scientists interested in GWI research. The following students have conducted GWI-related research in 2017:

Name	Affiliation
Ms. Edna Santos	VCU Biology
Ms. Elizabeth Vu	VCU HPEX
Ms. Wasamah Sheikh	VCU Anthropology
Ms. Elizabeth Church	VCU HPEX
Ms. Kathryn Hobbs	UNC Biology
Mr. Richard Wang	TJHSST
Dr. Kristin Phillips	VCU Neurology

### **3.4 How were the results disseminated to communities of interest?**

We presented our work on GWI model development and calcium level estimations to scientists and consumers at the 2017 Society of Toxicology Annual Meeting. All the peer-reviewed manuscripts produced from our GWIRP efforts are freely available via VCU Scholars Compass and PMC Medline. We also actively promote our findings on social media such as Twitter, LinkedIn, and also on open-access scientific platforms.

### **3.5 What do you plan to do during the next reporting period to accomplish the goals?**

“Nothing to report”

## **4. Impact**

This research has offered new molecular targets for drug development and has identified levetriacetam for the effective treatment of GWI neurological symptoms of depression, anxiety, and cognitive deficits.

### **4.1 What was the impact on the development of the principal discipline(s) of the project?**

Our research will have a major impact on the lives of veterans suffering from GWI by providing investigators a novel model of GWI symptoms to identify molecular bases of GWI in search of effective therapeutic options.



#### 4.2 What was the impact on other disciplines?

Exposure to OP agents that is occupational, accidental, or terrorism-related is a legitimate concern. Our work involving model development has the capability to also serve as a rodent model of chronic OP exposure in the civilian population.

#### 4.3 What was the impact on technology transfer?

“Nothing to report”

#### 4.4 What was the impact on society beyond science and technology?

“Nothing to report”

#### 5. Changes/ Problems:

“Nothing to report”

#### 6. Products

##### 6.1 Publications, conference papers, and presentations

###### 6.1.1 Journal publications:

1. Phillips K and Deshpande LS (2017) Chronic Neurological Morbidities and Elevated Hippocampal Calcium Levels in a DFP-Based Rat Model of Gulf War Illness. *J Mil Med.* (*in press*).

###### 6.1.2 Other publications, conference papers, and presentations

1. K. Phillips, R. Blair, L. Deshpande. Novel Molecular Mechanisms for Neurological Morbidities in a DFP Based Rat Model of Gulf War Illness. In: *The Toxicologist: Supplement to Toxicological Sciences*, [Volume-156 (Issue-1)], Society of Toxicology, [2017]. Abstract no. [2885]. [Baltimore, MA, Mar. 12-16, 2017]

#### 7. Participants & Other Collaborating Organizations

##### 7.1 What individuals have worked on the project?

<b>Name</b>	Laxmikant Deshpande	Kristin Phillips	Robert Blair
<b>Project Role</b>	PI	Post-Doc Fellow	Investigator
<b>Research Identifier</b>	orcid.org/0000-0003-1491-1561		
<b>eRA commons:</b>	DESHPANDELS	KPHILLIPS5	REBLAIR
<b>Nearest person month worked</b>	6	10	2
<b>Contribution to the project</b>	DFP exposures, behavioral assays, estimation of calcium, data analysis and communication	DFP exposures, preparation of hippocampal slices, estimation of intracellular calcium	Protein isolation and estimations using western blotting
<b>Funding support</b>	DOD, NINDS	DOD	DOD, NINDS

**7.2 Has there been a change in the active other support of the PD/PI(s) or senior/key personnel since the last reporting period?**

“Nothing to report”

**7.3 What other organizations were involved as partners?**

“Nothing to report”

**8. Special reporting requirements**

“Not applicable”

**9. Appendices**

9.1 Bibliography

9.2 SOT Poster

**9.1 Bibliography**

1. White, R.F., Steele, L., O'Callaghan, J.P., Sullivan, K., Binns, J.H., Golomb, B.A., Bloom, F.E., Bunker, J.A., Crawford, F., Graves, J.C., Hardie, A., Klimas, N., Knox, M., Meggs, W.J., Melling, J., Philbert, M.A. and Grashow, R. (2016) Recent research on Gulf War illness and other health problems in veterans of the 1991 Gulf War: Effects of toxicant exposures during deployment. *Cortex; a journal devoted to the study of the nervous system and behavior* 74, 449-475.
2. GulfWarandHealth, C., 2016. Gulf War and Health: Volume 10: Update of Health Effects of Serving in the Gulf War, 2016. In Cory-Slechta, D., Wedge, R., (Eds.), Washington (DC), pp.
3. Phillips, K.F. and Deshpande, L.S. (2016) Repeated low-dose organophosphate DFP exposure leads to the development of depression and cognitive impairment in a rat model of Gulf War Illness. *Neurotoxicology* 52, 127-133.
4. Deshpande, L.S., Carter, D.S., Blair, R.E. and DeLorenzo, R.J. (2010) Development of a prolonged calcium plateau in hippocampal neurons in rats surviving status epilepticus induced by the organophosphate diisopropylfluorophosphate. *Toxicol Sci* 116 (2), 623-631.
5. Deshpande, L.S., Phillips, K., Huang, B. and DeLorenzo, R.J. (2014) Chronic behavioral and cognitive deficits in a rat survival model of paraoxon toxicity. *Neurotoxicology* 44, 352-357.
6. Battaglia, F.P., Benchenane, K., Sirota, A., Pennartz, C.M. and Wiener, S.I. (2011) The hippocampus: hub of brain network communication for memory. *Trends Cogn Sci* 15 (7), 310-318.
7. Campbell, S. and Macqueen, G. (2004) The role of the hippocampus in the pathophysiology of major depression. *J Psychiatry Neurosci* 29 (6), 417-426.
8. Chao, L.L., Rothlind, J.C., Cardenas, V.A., Meyerhoff, D.J. and Weiner, M.W. (2010) Effects of low-level exposure to sarin and cyclosarin during the 1991 Gulf War on brain function and brain structure in US veterans. *Neurotoxicology* 31 (5), 493-501.
9. Odegard, T.N., Cooper, C.M., Farris, E.A., Arduengo, J., Bartlett, J. and Haley, R. (2013) Memory impairment exhibited by veterans with Gulf War Illness. *Neurocase* 19 (4), 316-327.

10. Menon, P.M., Nasrallah, H.A., Reeves, R.R. and Ali, J.A. (2004) Hippocampal dysfunction in Gulf War Syndrome. A proton MR spectroscopy study. *Brain Res* 1009 (1-2), 189-194.
11. Abdel-Rahman, A., Abou-Donia, S., El-Masry, E., Shetty, A. and Abou-Donia, M. (2004) Stress and combined exposure to low doses of pyridostigmine bromide, DEET, and permethrin produce neurochemical and neuropathological alterations in cerebral cortex, hippocampus, and cerebellum. *J Toxicol Environ Health A* 67 (2), 163-192.
12. Abdullah, L., Evans, J.E., Bishop, A., Reed, J.M., Crynen, G., Phillips, J., Pelot, R., Mullan, M.A., Ferro, A., Mullan, C.M., Mullan, M.J., Ait-Ghezala, G. and Crawford, F.C. (2012) Lipidomic profiling of phosphocholine-containing brain lipids in mice with sensorimotor deficits and anxiety-like features after exposure to Gulf War agents. *Neuromolecular Med* 14 (4), 349-361.
13. Parihar, V.K., Hattiangady, B., Shuai, B. and Shetty, A.K. (2013) Mood and Memory Deficits in a Model of Gulf War Illness Are Linked with Reduced Neurogenesis, Partial Neuron Loss, and Mild Inflammation in the Hippocampus. *Neuropsychopharmacology*
14. Speed, H.E., Blaiss, C.A., Kim, A., Haws, M.E., Melvin, N.R., Jennings, M., Eisch, A.J. and Powell, C.M. (2012) Delayed reduction of hippocampal synaptic transmission and spines following exposure to repeated subclinical doses of organophosphorus pesticide in adult mice. *Toxicol Sci* 125 (1), 196-208.
15. Torres-Altora, M.I., Mathur, B.N., Drerup, J.M., Thomas, R., Lovinger, D.M., O'Callaghan, J.P. and Bibb, J.A. (2011) Organophosphates dysregulate dopamine signaling, glutamatergic neurotransmission, and induce neuronal injury markers in striatum. *J Neurochem* 119 (2), 303-313.
16. Bengtson, C.P. and Bading, H. (2012) Nuclear calcium signaling. *Adv Exp Med Biol* 970, 377-405.
17. Baker, K.D., Edwards, T.M. and Rickard, N.S. (2013) The role of intracellular calcium stores in synaptic plasticity and memory consolidation. *Neurosci Biobehav Rev* 37 (7), 1211-1239.
18. Zucchi, R. and Ronca-Testoni, S. (1997) The Sarcoplasmic Reticulum Ca<sup>2+</sup> Channel/Ryanodine Receptor: Modulation by Endogenous Effectors, Drugs and Disease States. *Pharmacological Reviews* 49 (1), 1-52.
19. Adasme, T., Haeger, P., Paula-Lima, A.C., Espinoza, I., Casas-Alarcon, M.M., Carrasco, M.A. and Hidalgo, C. (2011) Involvement of ryanodine receptors in neurotrophin-induced hippocampal synaptic plasticity and spatial memory formation. *Proc Natl Acad Sci U S A* 108 (7), 3029-3034.
20. Lu, Y.F. and Hawkins, R.D. (2002) Ryanodine receptors contribute to cGMP-induced late-phase LTP and CREB phosphorylation in the hippocampus. *J Neurophysiol* 88 (3), 1270-1278.
21. Deshpande, L.S., Carter, D.S., Phillips, K.F., Blair, R.E. and DeLorenzo, R.J. (2014) Development of status epilepticus, sustained calcium elevations and neuronal injury in a rat survival model of lethal paraoxon intoxication. *Neurotoxicology* 44, 17-26.
22. Raza, M., Blair, R.E., Sombati, S., Carter, D.S., Deshpande, L.S. and DeLorenzo, R.J. (2004) Evidence that injury-induced changes in hippocampal neuronal calcium dynamics during epileptogenesis cause acquired epilepsy. *Proc Natl Acad Sci U S A* 101 (50), 17522-17527.

# Novel Molecular Mechanisms for Neurological Morbidities in a DFP Based Rat Model of Gulf War Illness

Kristin F. Phillips, Robert E. Blair, Laxmikant S. Deshpande  
School of Medicine • Department of Neurology • Richmond, VA

SOT  
2885

## INTRODUCTION

Chronic exposures to organophosphates (OP) including pesticides and nerve gas during the Persian Gulf War has been attributed to the development of a debilitating disorder known as Gulf War Illness (GWI)<sup>1,2</sup>. Despite current treatment recommendations, GWI Veterans continue to suffer from neurological morbidities of depression, and memory impairments amongst others<sup>3</sup>.

We have developed an OP-based rat model of GWI that mimics these neurological symptoms in the absence of other confounding factors present in the war theatre<sup>4</sup>. This model is being used to identify molecular correlates for GWI to develop effective treatment solutions. A molecular mechanism that is commonly altered in neurological disorders is aberrant calcium signaling.

Calcium ions (Ca<sup>2+</sup>) are signaling molecules modulating memory, mood, and behavior functions. Disruptions in neuronal Ca<sup>2+</sup> are implicated in Alzheimer's, Epilepsy, TBI, conditions which manifest similar neurological morbidities as seen in GWI<sup>5</sup>. However, the status of Ca<sup>2+</sup> homeostasis in the development of behavioral impairments in GWI is unknown, and thus is the focus of this investigation.

## METHODS

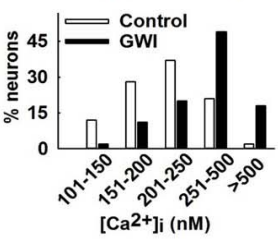
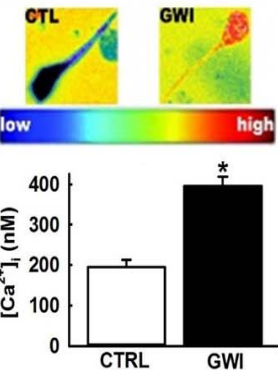
**GWI Model:** Male rats (3D, 9-weeks) were injected once daily with DFP (0.5 mg/kg, s.c., ice-cold PBS) for 5-days, while control rats received saline injections<sup>6</sup>. At 3-months post-DFP exposure, rats were tested for the symptoms of depression and cognitive deficits using a battery of behavioral assays as described earlier<sup>7</sup>.

**Calcium Imaging:** CA1 neurons were acutely isolated from hippocampal slices and loaded with fluorescent Ca<sup>2+</sup> indicator Fura-2/AM. They were then stimulated using alternating 340/380 wavelengths and resulting emissions were acquired to record Ca<sup>2+</sup> transients as described earlier<sup>8</sup>.

**Calcium Calibration:** Calibration curve was constructed using solutions of calibrated Ca<sup>2+</sup> buffers ranging from Ca<sup>2+</sup> free to 39 μM Ca<sup>2+</sup>. Values from the calibration curve were used to convert fluorescent ratios to [Ca<sup>2+</sup>]<sub>i</sub>. Final [Ca<sup>2+</sup>]<sub>i</sub> were calculated from the background corrected 340/380 ratios using the Grynkiewicz eq<sup>9</sup>: [Ca<sup>2+</sup>]<sub>i</sub> = (K<sub>d</sub> × Sf / S<sub>b</sub>) × (R - R<sub>min</sub>) / (R<sub>max</sub> - R)

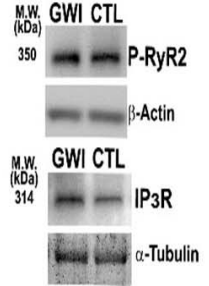
**Western Blotting:** Hippocampal tissue from GWI rats processed using standard procedures. From each rat, hippocampal homogenates were prepared. Quantitation of the amount of RyR-p, IP3R, and PLC $\gamma$  per mg protein in each sample was performed. Antibody specificity was established using blocking peptides and no antibody controls. Internal and external standards to control for loading and sample variability were used.

## Elevated hippocampal [Ca<sup>2+</sup>]<sub>i</sub> in GWI neurons



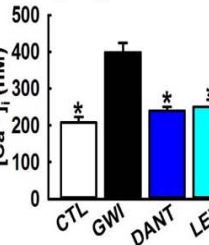
Acutely isolated CA1 neurons from GWI rats manifested [Ca<sup>2+</sup>]<sub>i</sub> of 399 ± 26 nM, that were higher than [Ca<sup>2+</sup>]<sub>i</sub> in neurons from age-matched controls (208 ± 16 nM, n = 7 animals, p < 0.05, t-test). Analysis of the population distributions of [Ca<sup>2+</sup>]<sub>i</sub> revealed a rightward shift towards higher Ca<sup>2+</sup> concentrations in GWI neurons compared to control neurons (p < 0.01,  $\chi^2$ -test, n = 161 neurons).

## Increased CICR protein expression in GWI rats



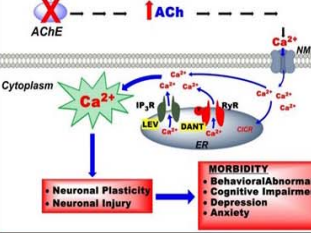
Western blot analysis showed increased levels of intracellular Ca<sup>2+</sup> release receptor proteins P-RyR<sub>2</sub> (100 ± 14.2%, 124.2 ± 31.9%) and IP<sub>3</sub>R (100.0 ± 48.6%, 105.9 ± 43.2%).

## CICR antagonists lower elevated [Ca<sup>2+</sup>]<sub>i</sub> in GWI neurons



Dantrolene (DANT, 50 μM) or levetracetam (LEV, 100 μg) lowered elevated [Ca<sup>2+</sup>]<sub>i</sub> in GWI neurons (240 ± 11 nM and 250 ± 19 nM respectively, n = 5 animals, p < 0.05, t-test).

## Calcium Hypothesis of GWI in rats



## CONCLUSIONS

We observed that GWI rats manifested chronic elevations in hippocampal Ca<sup>2+</sup> levels. The protracted Ca<sup>2+</sup> elevation had its origin in Ca<sup>2+</sup> release from intracellular Ca<sup>2+</sup> stores, since the ryanodine/IP<sub>3</sub> receptor antagonists produced a significant reduction in elevated [Ca<sup>2+</sup>]<sub>i</sub> in GWI neurons. These sustained [Ca<sup>2+</sup>]<sub>i</sub> elevations appear to be due an increased expression in major components of intracellular Ca<sup>2+</sup> release machinery, particularly the RyR<sub>2</sub> receptor. Mechanisms underlying increased expression of P-RyR<sub>2</sub> are being investigated.

Since Ca<sup>2+</sup> is a major second messenger molecule, such chronic increases in its levels could activate signaling cascades that could underlie the neuronal damage and also produce pathological synaptic plasticity that expresses itself as GWI morbidity. Treatment with drugs targeted at blocking this enhanced intracellular Ca<sup>2+</sup> release could be effective therapies for GWI related neurological morbidities.

## ACKNOWLEDGEMENTS

This research is supported by the Congressionally Directed Medical Research Program (CDMRP), specifically the Gulf War Illness Research Program, [grant award W81XWH-14-1-0478] to LSD.

## REFERENCES

1. R. White, L. Stelle, O'Callaghan et al. *Cortex*, 74, 449-475. (2016).
2. R. Haley and J. Tuile. *Neuroepidemiol.* 40 (3), 178-189 (2013).
3. Update of Health Effects of Serving in the Gulf War, Vol.10 (2016).
4. K. Phillips and L. Deshpande *Neurotoxicology*, 52, 127-33 (2016).
5. L. Deshpande et al. *Ann N Y Acad Sci.*, 1374(1), 176-83 (2016).