

Award: W81XWH-10-1-1043

TITLE: FES-Rowing versus Zoledronic Acid to Improve Bone Health in SCI

PRINCIPAL INVESTIGATOR: Leslie R. Morse, DO

CONTRACTING ORGANIZATION: Spaulding Rehabilitation Hospital,  
Boston, MA 02129

REPORT DATE: DECEMBER 2016

TYPE OF REPORT: FINAL

PREPARED FOR: U.S. Army Medical Research and Materiel Command  
Fort Detrick, Maryland 21702-5012

DISTRIBUTION STATEMENT: Approved for public release; distribution unlimited

The views, opinions and/or findings contained in this report are those of the author(s) and should not be construed as an official Department of the Army position, policy or decision unless so designated by other documentation.

<b>REPORT DOCUMENTATION PAGE</b>			Form Approved OMB No. 0704-0188	
Public reporting burden for this collection of information is estimated to average 1 hour per response, including the time for reviewing instructions, searching existing data sources, gathering and maintaining the data needed, and completing and reviewing this collection of information. Send comments regarding this burden estimate or any other aspect of this collection of information, including suggestions for reducing this burden to Department of Defense, Washington Headquarters Services, Directorate for Information Operations and Reports (0704-0188), 1215 Jefferson Davis Highway, Suite 1204, Arlington, VA 22202-4302. Respondents should be aware that notwithstanding any other provision of law, no person shall be subject to any penalty for failing to comply with a collection of information if it does not display a currently valid OMB control number. <b>PLEASE DO NOT RETURN YOUR FORM TO THE ABOVE ADDRESS.</b>				
<b>1. REPORT DATE</b> December 2016		<b>2. REPORT TYPE</b> Final Report		<b>3. DATES COVERED</b> 30Sept2010 - 29Sept2016
<b>4. TITLE AND SUBTITLE</b> FES-Rowing versus Zoledronic Acid to Improve Bone Health in SCI			<b>5a. CONTRACT NUMBER</b> W81XWH-10-1-1043	
			<b>5b. GRANT NUMBER</b> SC090027	
			<b>5c. PROGRAM ELEMENT NUMBER</b>	
<b>6. AUTHOR(S)</b> Leslie R. Morse, DO  E-Mail: leslie.morse@ucdenver.edu			<b>5d. PROJECT NUMBER</b>	
			<b>5e. TASK NUMBER</b>	
			<b>5f. WORK UNIT NUMBER</b>	
<b>7. PERFORMING ORGANIZATION NAME(S) AND ADDRESS(ES)</b> Spaulding Rehabilitation Hospital, 300 First Ave, Charlestown, MA 02129			<b>8. PERFORMING ORGANIZATION REPORT NUMBER</b>	
<b>9. SPONSORING / MONITORING AGENCY NAME(S) AND ADDRESS(ES)</b> U.S. Army Medical Research and Materiel Command Fort Detrick, Maryland 21702-5012			<b>10. SPONSOR/MONITOR'S ACRONYM(S)</b>	
			<b>11. SPONSOR/MONITOR'S REPORT NUMBER(S)</b>	
<b>12. DISTRIBUTION / AVAILABILITY STATEMENT</b> Approved for Public Release; Distribution Unlimited				
<b>13. SUPPLEMENTARY NOTES</b>				
<b>14. ABSTRACT</b>  <p>There is no established treatment to prevent bone loss or to induce new bone formation following SCI, although the risk is high in this population of osteoporosis-related bone fracture. This study aims to learn if the severe osteoporosis in lower extremities caused by spinal cord injuries can be slowed or reversed with a combination of an exercise that simulates weight-bearing and a bisphosphonate medication. 70 Individuals with T3-12 spinal cord injuries will be enrolled in a 12-month regime of adapted FES-rowing. Our preliminary study findings demonstrated this exercise led to new bone formation and improved bone micro architecture in the lower extremities of people with SCI. Half of the subjects also receive a bisphosphonate medication known to slow bone loss, but not stimulate bone renewal.</p> <p>Participant recruitment began in late February, 2011, and was completed in October 2013. We have enrolled 70 subjects, 46 of whom have completed the study. Data analysis was completed February 2017.</p>				
<b>15. SUBJECT TERMS</b> SCI, Osteoporosis, FES-rowing, zoledronic acid, exercise, bone health				
<b>16. SECURITY CLASSIFICATION OF:</b>			<b>17. LIMITATION OF ABSTRACT</b>  UU	<b>18. NUMBER OF PAGES</b>  9
<b>a. REPORT</b> U	<b>b. ABSTRACT</b> U	<b>c. THIS PAGE</b> U		
				<b>19b. TELEPHONE NUMBER</b> (include area code)

**Table of Contents**

	<u>Page</u>
<b>Introduction.....</b>	<b>4</b>
<b>Body.....</b>	<b>4</b>
<b>Key Research Accomplishments.....</b>	<b>8</b>
<b>Reportable Outcomes.....</b>	<b>8</b>
<b>Conclusion.....</b>	<b>9</b>
<b>References.....</b>	<b>9</b>
<b>Appendices.....</b>	<b>9</b>

## Introduction

Serious spinal cord injury (SCI) causes osteoporosis in the lower extremities, significantly increasing the risk of bone fracture in this population. However, there currently is no established treatment to prevent bone loss or to induce new bone formation following SCI. The goal of this clinical trial -- *FES-Rowing versus Zoledronic Acid to Improve Bone Health in SCI* – is to develop an evidence-based therapeutic protocol to address a prevalent and significant health issue in this population. A second aim is to better understand the bone biology and bone health of people with serious SCI. The trial calls for 70 subjects with SCI to participate in a 12-month adapted FES-rowing program. Half of the subjects also receive a one-time infusion of zoledronic acid, a bisphosphonate used to treat osteoporosis, usually in older women.

We demonstrated in our preliminary studies that functional electrical stimulation (FES) rowing stimulates bone formation and improved bone micro-architecture in the lower extremity. Bisphosphonate medications slow bone loss but do not stimulate new bone formation. Therefore, combination treatment with a bone-building stimulus (FES-rowing) and a medication that stops bone loss (bisphosphonate) may result in greater improvements in bone compared to either agent alone. We are using DXA and CT bone scans to compare changes in bone density and health pre- and post-rowing and bisphosphonate treatment. The results of this study should provide a better understanding of possible therapies to maintain bone strength among people with SCI.

## Body

We received final Department of Defense approval to begin active subject recruiting in February, 2011. In the past year we have focused resolution of institutional conflicts with the VA site. We have completed all study testing and data analysis.

*Statement of Work, Task 1: Study preparation, human subjects approval, finalize instruments, procedures, protocols; research coordinators*

This task was completed during the first year of the study.

*Statement of Work, Task 2: Recruitment and screening*

We have reached our subject enrollment goal of 70 and are no longer recruiting or screening potential subjects.

*Statement of Work, Task 3: Enrollment, randomization, baseline testing*

We enrolled 70 individuals, 35 in treatment arm and 35 in the rowing only arm. Baseline bone density scanning, blood draws (renal function, vitamin D levels, calcium levels, bone turnover markers), and distribution of calcium and vitamin D supplements have been carried out successfully at the VA Boston Healthcare-Jamaica Plain Campus. 36 were found to have a vitamin D deficiency (<than 30ng/ml) and were treated with supplemental vitamin D. No subject was excluded from participation based on screening blood work (ie renal function has been adequate in all subjects).

Please see table below for characteristics of enrolled participants based on randomization arm.

**Subject Characteristics:**

Variable	ZA Infusion and Exercise Arm n=34	Exercise Only Arm n=35
<b>Demographics</b>		
Age (Mean $\pm$ SD) [years]	37.2 $\pm$ 12.7	40.1 $\pm$ 11.3
Age (Range) [years]	20.7-63.5	21.1-65.1
White %	27 (77.14%)	30 (85.71%)
Male %	32 (91.43%)	31 (88.57%)
Duration of SCI (Mean $\pm$ SD) [years]	9.93 $\pm$ 10.8	10.9 $\pm$ 10.5
Duration of SCI (Range) [years]	8.1-46.1	0.13-37.3
Motor Complete Injury %	28 (52.24%)	25 (71.43%)
<b>BMI [Mean <math>\pm</math> SD] (kg/m<sup>2</sup>)</b>	25.2 $\pm$ 5.6	27.5 $\pm$ 5.6
<b>Vitamin D (Mean <math>\pm</math> SD)</b>	29.6 $\pm$ 10.3	26.6 $\pm$ 10.6
• Deficient <30 ng/ml	23 (65.71%)	25 (71.43%)
• Sufficient $\geq$ 30 ng/ml	12 (34.29%)	10 (28.57%)
<b>Smoking History</b>		
• Current smoker	3 (10.0%)	3 (10.3%)
• Former smoker	8 (26.7%)	8 (27.6%)
• Never smoker	19 (63.3%)	18 (62.1%)

*Statement of Work, Task 4: 6-month measurements*

6-month measurements are complete. 37 subjects have had their midpoint data collection – bone density scans, as well as blood draws to check vitamin D, renal function, and future analysis of bone turnover markers. 20 subjects have had their 6-month of rowing CT scan of the knee.

*Statement of Work, Task 5: FES-row training*

FES-row training is complete. 38 subjects transitioned from strength training to active rowing.

*Statement of Work, Task 6: Zoledronic acid infusion*

All zoledronic acid infusions are complete. Eighteen subjects have received the zoledronic acid infusion at the VA Boston Healthcare-Jamaica Plain Campus. The nurse practitioner that administered the infusion made follow-up phone calls within 24 hours to check on how the subject is feeling.

*Statement of Work, Task 7: 18-month measurements*

We completed final testing for all participants.

*Statement of Work, Task 8: Data analysis*

We completed cross-sectional analysis of baseline DXA and CT data collected for the all subjects enrolled. Additionally, we have completed Finite Element Analysis (FES) of the CT scans to determine change in bone volume and bone strength due to rowing and zoledronic acid.

**Baseline Bone Density/Incidence of Osteoporosis at the Hip:** We scanned traditional bone density sites (femoral neck, total hip and radius) as well as SCI specific skeletal sites (distal femur and proximal tibia) as these are the sites where fractures are most common within the SCI population. For subjects age 50 or older, T-score was used to classify hip bone density (total hip and femoral neck) according to the World Health

(T-score  $\leq -2.5$ ). For subjects under the age of 50, Z-score was used to classify bone density at the hip as normal (Z-score  $> -2$ ) or as lower than expected for age and sex (Z-score  $\leq -2$ ). A total of 30.0% of the participants were classified as having osteoporosis/BMD lower than expected for age. Four participants had no hip data available for analysis due to contracture.

<b>Bone Mineral Density (Mean <math>\pm</math> SD) (Range)[g/cm<sup>2</sup>]</b>		
<b>SCI Specific Sites</b>		
• Distal femur	0.756 $\pm$ 0.24	0.715 $\pm$ 0.25
• Proximal tibia	0.795 $\pm$ 0.30	0.733 $\pm$ 0.26
<b>Traditional Sites</b>		
• Femoral Neck	0.859 $\pm$ 0.21	0.795 $\pm$ 0.23
• Total Hip	0.834 $\pm$ 0.23	0.780 $\pm$ 0.23
• Radius	0.980 $\pm$ 0.09	0.985 $\pm$ 0.08
<b>Osteoporosis status</b>		
• Normal		
• Osteopenia	9 (25.7%)	7 (20.0%)
• Osteoporosis/BMD lower than expected for age	12 (34.3%)	9 (25.7%)
• No hip BMD available	9 (25.7%)	12 (34.3%)
	5 (14.3%)	6 (17.1%)

**Baseline Vitamin D Status:** Of those tested, 36 were found to have a vitamin D deficiency ( $<$ than 30ng/ml) and were treated with supplemental vitamin D. After completing the round of repletion, 14 had corrected vitamin D levels greater than 30 ng/ml. After repletion, everyone takes a standard dose of vitamin D and calcium. The average vitamin D value was 28.1 ng/ml (std=10.48, range 7-58.7).

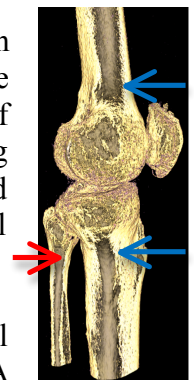
**Adiponectin as a marker of bone strength and fracture history in motor complete SCI:** We explored the association between circulating adiponectin levels and bone strength in 27 men who had completed baseline testing. Plasma adiponectin levels were quantified by ELISA assay. Axial stiffness and maximal load to fracture of the distal femur were quantified via finite element analysis using reconstructed 3D models of volumetric CT scans. We also collected information on timing, location, and cause of previous fractures. Axial stiffness and maximal load were inversely associated with circulating adiponectin levels ( $R^2=0.32$ ,  $p=0.002$ ;  $R^2=0.33$ ,  $p=0.002$ ) after adjusting for injury duration and lower extremity lean mass. In individuals with post-SCI osteoporotic fractures, distal femur stiffness ( $p=0.01$ ) and maximal load ( $p=0.005$ ) were lower and adiponectin was higher ( $p=0.04$ ) than those with no fracture history. Based on these findings, strength estimates may improve fracture risk prediction and detection of response to osteogenic therapies following spinal cord injury. Furthermore, our findings suggest that circulating adiponectin may indeed be a feasible biomarker for bone health and osteoporotic fracture risk in individuals with motor complete spinal cord injury. These findings will be reported in a recent publication (Adiponectin is Associated with Bone Strength and Fracture History in Paralyzed Men with Spinal Cord Injury. Osteoporos Int. 2014 Nov;25(11):2599-607).

**FES-rowing and aerobic capacity:** We hypothesized that hybrid Functional Electrical Stimulation Row Training (FES-RT) would improve aerobic capacity but that it would remain strongly linked to level of spinal cord lesion due to limited maximal ventilation. We studied 14 participants with complete SCI T3-T11,  $>2$  years post-injury, aged 21-63 years after six months of FES-row-training. We found that FES-row training significantly increased  $VO_{2peak}$  and  $Ve_{peak}$  (both  $p<0.05$ ). Prior to FES-row training, there was a close relationship between level of spinal cord injury and  $VO_{2peak}$  (adj  $r^2=0.40$ ,  $p=0.009$ ) that was markedly reduced after FES-row training (adj  $r^2=0.15$ ,  $p=0.10$ ). In contrast, the relationship between level of injury and  $Ve_{peak}$  was comparable before and after FES-RT (adj  $r^2=0.38$  vs. adj  $r^2=0.32$ , both  $p<0.05$ ). Therefore, we conclude the increased aerobic capacity reflects more than increased ventilation; FES-row training effectively circumvents the effect of the spinal cord injury on peak aerobic capacity by engaging more muscle mass for training, independent of level of injury.

**Zoledronic Acid Prevents Bone Loss after SCI:** For this analysis we included only men as there were too few women for a sub analysis. We excluded statin users (n=2) as we recently reported statin use increases bone density after SCI. We also excluded diabetics (n=1) as poor bone quality has been reported in this population. We excluded 1 participant who had fused hips and therefore did no rowing work in the lower extremities and 3 participants who did not complete any rowing sessions. We analyzed lower extremity CT scans for all remaining participants who had at least 2 CT scans at least 6 months (n=18).

Variables	No ZA (n=9)	ZA (n=9)
Age (years) [Mean $\pm$ SD]	40.2 $\pm$ 11.2	35.6 $\pm$ 10.8
Age at injury (years) [Mean $\pm$ SD]	26.3 $\pm$ 9.1	26.6 $\pm$ 11.9
Years since injury [Mean $\pm$ SD]	13.9 $\pm$ 13.7	9.0 $\pm$ 11.8
Years since injury at first CT [Mean $\pm$ SD]	14.2 $\pm$ 13.7	9.5 $\pm$ 11.9
BMI (kg/m <sup>2</sup> ) [Mean $\pm$ SD]	26.8 $\pm$ 6.6	23.6 $\pm$ 5.6
Legs lean mass [Mean $\pm$ SD]	16900.2 $\pm$ 3804.7	15814.1 $\pm$ 2988.9
25 OH Vitamin D (ng/mL) [Mean $\pm$ SD]	29.4 $\pm$ 8.2	34.2 $\pm$ 7.5
ASIA		
• A, n(%)	5 (45.4)	5 (55.6)
• B, n(%)	4 (36.4)	3 (33.3)
• C, n(%)	2 (18.2)	1 (11.1)

Strength (compressive strength index, cortical thickness index, buckling ratio, bending strength index) and bone mineral parameters (bone volume, bone mineral density (BMD), and bone mineral content (BMC)) of the proximal fibula (non-weight-bearing bone, reflecting the effect of ZA treatment alone, red arrow), and proximal tibia and distal femur (reflective of weight-bearing and ZA treatment, blue arrows) were quantified via finite element analysis using reconstructed 3D models of bilateral volumetric CT scans. Effects of ZA treatment, exercise, and clinical factors were assessed via linear mixed-effect models.



After adjusting for age and BMI, we found a time-dependent 20-24% decline in fibula cortical bone volume, bone mineral content, and bending strength index, which was prevented by ZA treatment

( $p < 0.02$ -0.03). To our knowledge, this is the first report demonstrating a positive effect of zoledronic acid on bone loss at the knee in chronic SCI.

Variable	Cortical bone volume		Cortical bone mineral content		Bending Strength Index (BSI)	
	Mean Change in CBV (%/year) [95% CI]	p	Mean Change in CBMC (%/year) [95% CI]	p	Mean Change in BSI (%/year) [95% CI]	p
ZA Treatment						
No	-21.7 [-40.6, -2.7]	0.02	-24.5 [-46.6, -2.4]	0.03	-8.2 [-15.6, -0.88]	0.03
Yes	reference		reference		reference	
BMI (kg/m <sup>2</sup> )	1.6 [-0.35, 3.5]	0.10	1.7 [-0.53, 3.9]	0.12	0.99 [0.30, 1.7]	0.008
Age (years)	0.44 [-0.41, 1.3]	0.28	0.51 [-0.49, 1.5]	0.29	0.16 [-0.17, 0.50]	0.30

**Combination Therapy with Zoledronic Acid and Rowing is Superior to Rowing Alone:** In models adjusting for baseline values, we found that compressive strength index ( $p=0.004$ ), cortical thickness index ( $p=0.000$ ), and buckling ratio ( $p=0.000$ ) at the tibial metaphysis were greater in the zoledronic acid plus rowing group compared to the rowing only group. Similarly, there was a significant positive association between total rowing work completed and compressive strength index ( $p=0.005$ ) and buckling ration ( $p=0.002$ ) at the tibial metaphysis.

**Improvements in Bone Strength are Exercise Dose-Dependent:** A subgroup analysis of the rowing only arm showed that gains in compressive strength index at the tibial metaphysis varied in a dose-dependent fashion based on the total amount of exercise performed ( $p=0.009$ ).

A manuscript is currently in preparation for submission to *Journal of Bone and Mineral Research*.

**Key Research Accomplishments/Preliminary Findings to Date:** We have several interim key research accomplishments based on analysis of baseline and 6-month data:

- Identification of adiponectin as a biomarker of lower extremity bone strength and fracture risk in motor complete SCI.
- Demonstration that FES-row training effectively circumvents the effect of the SCI on peak aerobic capacity by engaging more muscle mass for training, independent of level of injury.
- Finding that zoledronic acid prevents bone loss at the knee in chronic SCI.
- Finding that there is a significant interaction between zoledronic acid and rowing leading to greater gains in bone strength at the proximal tibia compared to rowing alone.
- Finding that FES-rowing improves bone strength of the distal femur and proximal tibia in a dose dependent fashion.

## **Reportable Outcomes**

### *Publications*

Taylor JA, Picard G, Porter A, **Morse LR**, Pronovost M, Deley G. Hybrid FES exercise training alters the relationship between spinal cord injury level and aerobic capacity. *Arch Phys Med Rehabil*. 2014 Nov;95(11):2172-9.

Tan C, Battaglini R, Doherty A, Gupta R, Lazzari A, Garshick E, Zafonte R, **Morse LR**. Adiponectin is Associated with Bone Strength and Fracture History in Paralyzed Men with Spinal Cord Injury. *Osteoporos Int*. 2014 Nov;25(11):2599-607.

### *Awards*

Best Paper Award, Fellow category, 2015 Annual meeting of Association of Academic Physiatrists (Saeed Alzahr, MD)

### *National and International Presentations*

*FES-Rowing Training Improves Bone Strength of the Paralyzed Legs in a Dose-Dependent Fashion*. 2015 ASBMR (October, 2015).

*FES-Rowing Training Improves Bone Strength of the Paralyzed Legs in a Dose-Dependent Fashion*. 2015 MHSRS (August, 2015).

*Exercise Program for Spinal Cord Injury Based on Hybrid Functional Electrical Stimulation Row Training*, Oral Presentation, 62nd Annual ACSM Meeting, 6th World Congress on Exercise is Medicine® and World Congress on the Basic Science of Exercise Fatigue

*Maximal Ventilation Limits Increased Aerobic Capacity with Hybrid Functional Electrical Stimulation Exercise Training in High Spinal Cord Injury*, Oral presentation, 2015 Annual Association of Academic Physiatrists

*Circulating Adiponectin Levels are Negatively Associated with Bone Strength in Males with Motor Complete SCI*, Oral presentation, American Spinal Injury Association Annual Meeting, 2014

*Bone Regenerative Effects of FES-Rowing*, American Spinal Injury Association Annual Meeting, 2013

*Effect of a Regular Rowing Exercise Program on Maximal Exercise Capacity in Spinal Cord Injury (SCI)*, Oral presentation, American Spinal Injury Association Annual Meeting, 2012

*FES-rowing improves bone micro architecture and strength in the paralyzed lower extremity*, Poster Presentation, 2012 Annual ISCoS meeting

*Bone Regenerative Effects of FES-Rowing*, Oral Presentation, First Annual Symposium on Regenerative Rehabilitation, McGowan Institute for Regenerative Medicine, University of Pittsburgh, 2011

## **Conclusion**

Our final analysis has demonstrated a protective effect of both zoledronic acid and rowing on bone at the proximal tibial metaphysis (site most frequently fractured) after SCI. We have disseminated our work at national and international conferences with good reception and have published preliminary findings in 2 recent publications. A manuscript is in preparation for submission to the leading bone journal with our final study results.

## **References**

Not applicable

## **Appendices**

None