



**The Effect of Bracket Base Pylon Orientation on the Shear Bond Strength of  
the ODP ANCHOR-LOCK™ Bracket Pad.**

A THESIS

Presented to the Faculty of the  
Air Force Postgraduate School of Dentistry  
Of the Uniformed Services University of the Health Sciences  
In Partial Fulfillment of the Requirements  
For the Degree of MASTER OF SCIENCE  
In Oral Biology

By  
Adam John Veit, B.S., D.D.S.

San Antonio, Texas

December 22, 2012

**Uniformed Services University  
of the Health Sciences**

**Manuscript/Presentation Approval or Clearance**

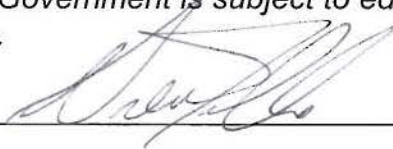
**INITIATOR**

1. USU Principal Author/Presenter: Adam J. Veit, LT, USN, BS, DDS
2. Academic Title: Masters of Science in Oral Biology
3. School/Department/Center: Air Force Postgraduate Dental School (AFPDS), Tri-Service Orthodontic Dental School
4. Phone: (210) 292-9038
5. Type of clearance: ☒ Paper ☐ Article ☐ Book ☐ Poster ☐ Presentation ☐ Other
6. Title: 'The Effect of Bracket Base Pylon Orientation on the Shear Bond Strength of the ODP ANCHOR-LOCK™ Bracket Pad'
7. Intended publication/meeting: June 2013
8. "Required by" date: 1 July 2013
9. Date of submission for USU approval: 6 June 2013

**CHAIR OR DEPARTMENT HEAD APPROVAL**

1. Name: Curtis M. Marsh, Col, USAF, DMD
2. School/Dept.: AFPDS/Tri-Service Orthodontic Dental School
3. Date: 6 June 2013

**\*Note:** *It is DoD policy that clearance of information or material shall be granted if classified areas are not jeopardized, and the author accurately portrays official policy, even if the author takes issue with that policy. Material officially representing the view or position of the University, DoD, or the Government is subject to editing or modification by the appropriate approving authority.*

Chair/Department Head Approval:  Date 6 Jun 13

---

## SERVICE DEAN APPROVAL

1. Name: Col Thomas Schneid



2. School (if applicable): AFPDS

3. Date: 7 Jun 2013

4. \_\_Higher approval clearance required (for University-, DoD- or US Gov't-level policy, communications systems or weapons issues review").

**\*Note:** *It is DoD policy that clearance of information or material shall be granted if classified areas are not jeopardized, and the author accurately portrays official policy, even if the author takes issue with that policy. Material officially representing the view or position of the University, DoD, or the Government is subject to editing or modification by the appropriate approving authority.*

## COMMANDER APPROVAL

1. Name:



2. School (if applicable):

3. Date:

4. \_\_Higher approval clearance required (for University-, DoD- or US Gov't-level policy, communications systems or weapons issues review").

**\*Note:** *It is DoD policy that clearance of information or material shall be granted if classified areas are not jeopardized, and the author accurately portrays official policy, even if the author takes issue with that policy. Material officially representing the view or position of the University, DoD, or the Government is subject to editing or modification by the appropriate approving authority.*

## PDC DEAN APPROVAL

1. Name:
2. School (if applicable):
3. Date:
4. \_\_Higher approval clearance required (for University-, DoD- or US Gov't-level policy, communications systems or weapons issues review").

**\*Note:** *It is DoD policy that clearance of information or material shall be granted if classified areas are not jeopardized, and the author accurately portrays official policy, even if the author takes issue with that policy. Material officially representing the view or position of the University, DoD, or the Government is subject to editing or modification by the appropriate approving authority.*

---

Dean/VP Signature/Date

## VICE PRESIDENT FOR EXTERNAL AFFAIRS ACTION

1. Name:
2. Date:
3. \_\_USU Approved or  
\_\_DoD Approval/Clearance required
4. \_\_Submitted to DoD (Health Affairs) on (date):  
Or \_\_Submitted to DoD (Public Affairs) on (date):
5. \_\_DoD approved/cleared (as written) or \_\_DoD approved/cleared (with changes)
6. DoD clearance/date:
7. DoD Disapproval/date:

---

External Affairs Approval

Date

**DEPARTMENT OF THE AIR FORCE**  
AIR FORCE POST GRADUATE DENTAL SCHOOL  
ORTHODONTIC FLIGHT  
2133 PEPPERRELL STREET, BLDG 3352  
JOINT BASE SAN ANTONIO - LACKLAND TEXAS 78236-5345

The author hereby certifies that the use of any copyrighted material in the thesis manuscript entitled:

**'THE EFFECT OF BRACKET BASE PYLON ORIENTATION ON THE SHEAR BOND STRENGTH OF THE ODP ANCHOR-LOCK™ BRACKET PAD'**

is appropriately acknowledged and, beyond brief excerpts, is with the permission of the copyright owner.



Adam J. Veit, LT, USN, BS, DDS  
Tri-Service Orthodontic Residency Program  
Air Force Post Graduate Dental School  
Date: 06/06/13

## **DEDICATION**

This thesis and research is dedicated to my family for their patience, understanding and love.

## **ACKNOWLEDGMENTS**

First and foremost I would like to thank Dr. Brent Callegari for his guidance, mentorship, and encouragement to complete this project. Next I would like to thank Dr. Kraig Vandewalle for his help with statistical analysis and direction using the necessary research equipment. Thank you ODP for providing bracket specifications, images and fabrication information. Finally, I would like to thank Mr. Miller and staff for manufacturing the stainless steel bracket jig used in this study.

## ABSTRACT

**Introduction:** The purpose of this study was to compare the shear bond strength of three different pylon orientations on the ODP ANCHOR-LOCK™ bracket pad.

**Null hypothesis:** Pylon orientation does not significantly affect shear bond strength.

**Methods:** Three groups, consisting of 25 brackets each, were bonded to secured surfaces of Transbond XT. Each group of brackets had a distinct pylon orientation. The three different pylon orientations included: Group 1 (0 degree brackets with 90 degree pylons), Group 2 (-7 degree brackets, with acute pylon orientation to shear force), and Group 3 (-7 degree bracket flipped to achieve +7 degree bracket with obtuse pylon orientation to shear force). Shear bond strength was determined using a universal testing machine. An analysis of variance, one-way ANOVA test was performed to determine if there was a significant difference between the three different pylon orientations. A Tukey HSD test was used to help determine which orientations were significantly different from one another. The Kruskal Wallis test was used to assess the Adhesive Remnant Index (ARI) scores for any significant differences. After a difference was determined, the Mann-Whitney test was used to determine which groups were significantly different ( $P < 0.05$ ).

**Results:** No significant differences existed between Groups 1 and 2. Group 3 was found to have significantly lower shear bond strength than groups 1 and 2 ( $P < 0.001$ ). Group 3 was also found to have a significantly lower adhesive remnant score (less adhesive remaining on the bracket) than groups 1 and 2 ( $P < 0.001$ ).



**Conclusions:** This study concluded that pylon orientation affects shear bond strength. Perpendicular and acute of pylon angles (relative to the direction of force applied) had significantly higher shear bonds strengths (and more adhesive remnants within the bracket base) than obtuse pylon angles. However, no significant differences were found between perpendicular and acute pylon orientations in regards to: shear bond strength, and ARI (Adhesive Remnant Index).

## TABLE OF CONTENTS

	Page
Title.....	i
Approval.....	ii
Dedication.....	iii
Acknowledgements.....	iv
Abstract.....	v-vi
Table of Contents.....	vii-viii
List of Figures.....	ix
List of Tables.....	x
 I. BACKGROUND AND LITERATURE REVIEW	
A. INTRODUCTION.....	1
1. Orthodontics before Brackets.....	1
2. The Shift from Bands to Brackets .....	5
3. Tooth Surface and its preparation for Bonding .....	5
4. Adhesives .....	7
a. Development.....	7
b. Resin-Based Composites.....	8
c. Glass Ionomer Cements (GICs).....	9
d. Resin-modified Glass Ionomer Cements (RMGICs).....	10
5. Bracket Base .....	10
a. Metal.....	10
b. Ceramic.....	20

6. Lighting.....	22
7. Clinical Bond Strength Requirements.....	22
8. Bond Failures and ARI.....	23
II. OBJECTIVES	
A. Purpose of the Present Study.....	27
B. Specific Hypothesis.....	27
C. Null Hypothesis.....	27
III. MATERIALS AND METHODS	
A. Experimental Design.....	28
B. Statistical Management of Data.....	38
IV. RESULTS.....	42
A. Comparing Shear Bond Strengths.....	47
B. ARI (Adhesive Remnant Index).....	50
V. DISCUSSION.....	54
VI. CONCLUSION.....	58
Literature Cited.....	60

## LIST OF FIGURES

	Page
Figure 1 Fauchard's Bandeau.....	2
Figure 2 Delabarre's Crib.....	3
Figure 3 Edward Angle's Edgewise Appliance.....	4
Figure 4 Perforated Bracket Base.....	12
Figure 5 Foil Mesh Base.....	13
Figure 6 Cast Integral Base.....	15
Figure 7 Super Mesh/Double Mesh Base.....	18
Figure 8 Sandblasted Mesh Base.....	19
Figure 9 Ceramic Base.....	21
Figure 10 ODP's Comfort Zone™ Series with Anchor-Lock™ Pad .....	26
Figure 11 Pylon Orientation Groups.....	30
Figure 12 Specimen Preparation .....	31-33
Figure 13 Instron® universal testing machine shear force.....	35
Figure 14 Bracket Base Surface Area.....	37
Figure 15 ARI Examples.....	40
Figure 16 Shear Bond Strength MPa.....	49
Figure 17 Bracket ARI (Adhesive Remnant Index) Score.....	52

## LIST OF TABLES

	Page
Table 1      Bracket Base Surface Area.....	36
Table 2      ARI Legend.....	39
Table 3      Group 1 Shear Bond Strength and ARI Values.....	43
Table 4      Group 2 Shear Bond Strength and ARI Values.....	44
Table 5      Group 3 Shear Bond Strength and ARI Values .....	45
Table 6      Group Means Compared.....	46
Table 7      Tukey HSD: MPa (Std. Deviation).....	48
Table 8      Mann-Whitney Test: ARI Average (Std. Deviation).....	51

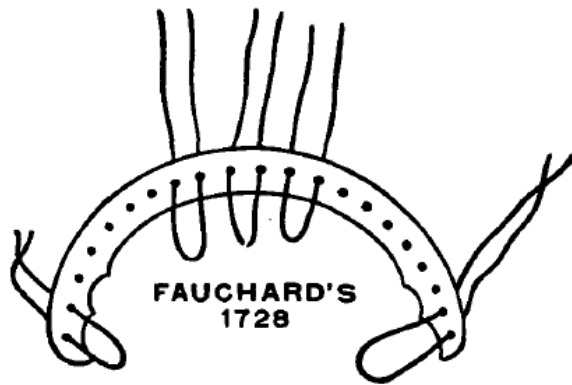
## **I. BACKGROUND AND LITERATURE REVIEW**

### **A. INTRODUCTION**

#### **1. Orthodontics before Brackets**

Humans have attempted to improve tooth alignment for a very long time. According to the American Association of Orthodontists, in “no later than 1,000 B.C., ancient Greeks began using base metals and cat gut in a determined effort to take the smile provided by nature and make it better.” The first scientific attempt at tooth alignment occurred in 1728, when Pierre Fauchard constructed the bandeau (Brodie, 1934). The bandeau was made from a flat metal strip connected to the teeth by pieces of thread which allowed the dentition to be tipped into an expanded arch form (Figure 1). Delabarre published the plan of the wire crib in 1826, marking the birth of contemporary orthodontics (Figure 2). “Delabarre’s wire crib was used for the purpose of keeping the antagonizing teeth apart while other teeth were being regulated by strings. This crib probably suggested to later operators the use of cribs for anchoring metallic springs” (Farrar, 1888). In 1841, Schange invented the first bands which consisted of metal strips with screws to adjust the size. The first dental cement for securing bands to teeth was developed in 1870 by Magill (Steiner, 1933). According to Steiner (1933), Edward Angle invented edgewise brackets attached to bands in 1928 (Figure 3). Early 20<sup>th</sup> century orthodontic appliances were primarily made from precious metal, steel, and vulcanite. It took until the late 1950s for stainless steel to be widely accepted as a suitable material for arch-wires and other appliances (Sellke, 1999).

**Figure 1: Fauchard's Bandeau.** Although Fauchard appears to be one of the earliest writers who described mechanisms for correcting irregular teeth, he does not claim that the strip was originated by him. M. Desirabode, a later writer (1823), in speaking of these strips, says that he thinks they have probably been in use since "ancient times" (Farrar, 1888).



(Steiner, 1933)

**Figure 2: Delabarre's Crib**

**A - This was made of six pieces of wire bent and soldered together as shown (Farrar, 1888).**

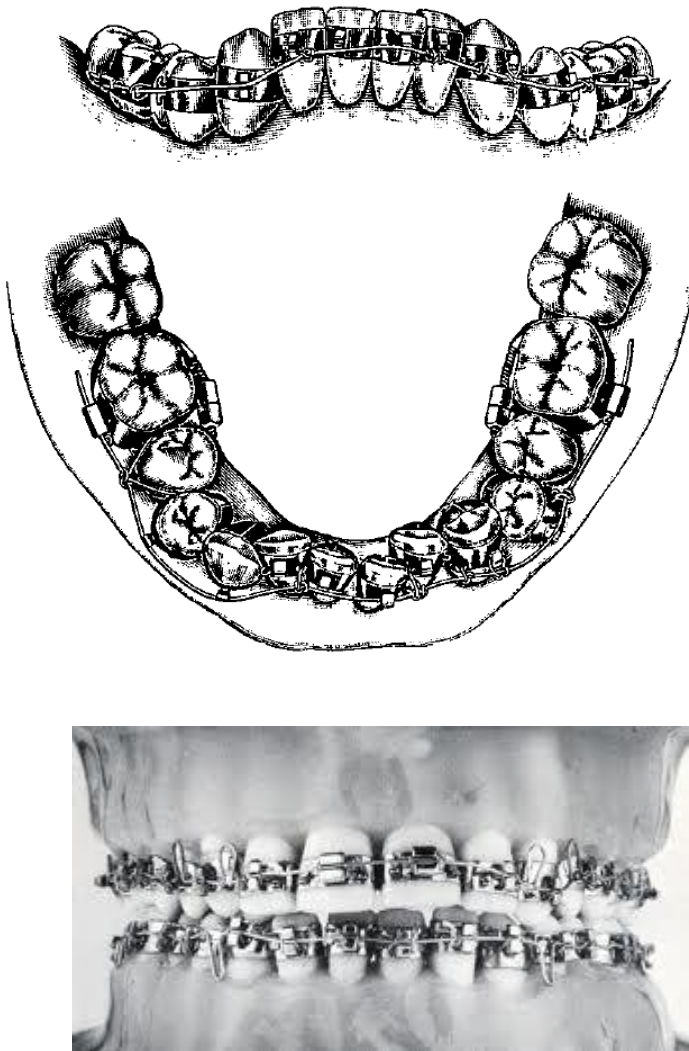


**B - When ready to apply it was forced over the side teeth as shown below, the lower wires hugging tightly their necks (Farrar, 1888).**





**Figure 3: Edward Angle's Edgewise appliance. Band designed to allow relatively efficient control of tip, torque and rotation (Steiner, 1933).**



## **2. The Shift from Bands to Brackets**

The orthodontic community has been bonding brackets directly to enamel since the development of three critical techniques: Buonocore's introduction of enamel etching in 1955 (Buonocore, 1955), the development of composite resin cements (Bowen, 1962) and Newman's description of how to bond attachments directly to enamel using epoxy resin in 1965 (Newman, 1965). Direct bonding of orthodontic brackets has advantages over banding that have made its use widespread for nearly half a century. These improvements include: esthetics, ease of manipulation, decreased patient discomfort, decreased gingival irritation, improved oral hygiene maintenance, control over partially erupted teeth and the elimination of band thickness (Reynolds, 1975; Bishara et al, 1999). To create a successful bond, three factors are vital: (1) the tooth surface, (2) the adhesive, and (3) the bracket backing (Reynolds, 1975).

## **3. Tooth Surface and its Preparation for Bonding**

Fully formed enamel is a highly mineralized extracellular matrix, consisting of 96% mineral and 4% organic matrix and water. The inorganic content of enamel is mainly crystalline calcium phosphate, called hydroxyapatite (Ten Cate, 1994). Untreated enamel does not contain enough porosity to allow for clinically sufficient bond strength (Cehreli et al, 2006).

In an effort to increase the adhesion to the tooth surface, Buonocore (1955) pioneered the acid-etching technique with 85 percent phosphoric acid. The irregular

enamel surface (microporosities) created by dissolving hydroxyapatite crystals permits penetration of the fluid-adhesive components of the bonding system and this penetration provides micromechanical retention (Basaran et al, 2007; Retief, 1978). It is now known that phosphoric acid concentrations greater than 50 percent result in the formation of a monocalcium phosphate monohydrate that inhibits further dissolution and concentrations above 10% does not significantly decrease bond strength (Chow et al, 1973; Gottlieb et al, 1982). Currently, phosphoric acid concentrations between 30-40% are used (Silverstone, 1974). Specifically, 37% phosphoric acid is most commonly used clinically as it provides similar bond strengths to higher concentrations, with less damage occurring to the enamel surface (Denys and Retief, 1982; Sadowsky et al., 1990; Carstensen, 1992). With 37% phosphoric acid, 15 seconds of etching is sufficient (Carstensen, 1986; Osario et al, 1999).

Self-etching primers have become popular in an effort to improve the efficiency of the bonding procedure. The suggested benefits of self-etching primers include: maintaining clinically useful bond strengths while minimizing the amount of enamel loss, and simplifying the technique by reducing the number of steps (Cal-Neto et al, 2006). Several studies have found that self-etching primers are able to achieve clinically acceptable levels of bond strength and there is not a statistically significant difference between conventional multi-step etch and prime and self-etching techniques (Bishara et al, 2001; Arnold et al, 2002, Velo et al, 2002;

Cacciafesta et al, 2003; Dorminey et al, 2003; Ireland et al, 2003; Larmour et al, 2003; Cehreli et al, 2005; e Cal-Neto et al, 2006).

#### **4. Adhesives**

##### **a. Development**

Development of the direct bonding technique was closely related to the advances in adhesives that were capable of withstanding the forces needed for orthodontic treatment and could be removed when then treatment was complete. In 1962, Bowen developed the BIS-GMA formula on which current orthodontic bracket bonding is primarily accomplished. Newman (1965) began with an epoxy resin, but found that the 15-minute cure time was too long and switched to modified acrylic resins with a cure time of five minutes. The advances in adhesives have continued. A 2003 Cochrane Summary (Mandall et al, 2009) compared a chemically cured composite, with light-cured composite, conventional glass-ionomer cement and polyacid-modified resin composite (compomer). The results of this summary were inconclusive. However, Faltermeier et al (2007) noted that the best mechanical properties could be achieved by incorporating high concentrations of filler particles of various sizes into the resin. When Vilchis et al (2008) compared five orthodontic adhesives (Transbond XT, Light Bond, BeautyOrtho Bond, Kurasper F, Heliosit Orthodontic, and a flowable orthodontic resin Salivatect), it was determined that there is no superiority of any specific filler because every type of filler offers advantages and disadvantages.

## **b. Resin-Based Composites**

Composite materials consist of two or more components. A resin-based composite typically contains three major components: an organic binder, inorganic filler and a coupling agent (Craig, 1977; Phillips 1982). The organic resin matrix is the chemically active component.

The least ideal characteristic of resin-based composites is volumetric shrinkage during the conversion of monomer to polymer (Combe et al, 2000). The resin matrix of all resin-based composites undergoes volumetric shrinkage of approximately 10%. This shrinking causes stress at the bonded interface with the adjacent tooth surface (Glen, 1982). The total polymerization shrinkage of comparable chemically-activated and light-activated resins do not differ significantly (Phillips, 1991; Craig, 1997). Fillers reduce the polymerization shrinkage and coefficient of thermal expansion of the material as well as improve abrasion resistance (Craig 1997). Resin-based composites can be classified according to particle filler size:

- Mega-fill                      0.5–2 millimeters
- Macro-fill                    10–100 microns
- Mid-fill                        1–10 microns
- Mini-fill                      0.1–1 microns
- Micro-fill                    0.01–0.1 microns
- Nano-fill                      0.005–0.01 microns

Modern orthodontic resin-based composites are mini-filled, with particles averaging 0.1-1  $\mu\text{m}$ . The filler content of orthodontic resin cements is lower than restorative resins. This is primarily for the properties of sufficient bond strength and easier removal of the remaining cement during debonding (Smith & Williams, 1982).

### **c. Glass Ionomer Cements (GICs)**

In orthodontics, Type I GICs are typically used. They are usually used for cementing bands, but they have also been used to bond orthodontic brackets. Type II GICs are restorative materials, and Type III are lining materials and fissure sealants (Richardson, 2010).

Fluoride is an important component of a GIC as it assists in the manufacturing of the glass by lowering fusion temperature and enhances the working characteristics and mechanical properties of the cement (Wilson & Nicholson, 1993). Glass ionomer cements also have the ability to release (Fox, 1990; Ashcraft et al., 1997) and absorb fluoride (Hatibovic-Kofman & Koch, 1991; Creanor et al., 1994). Studies comparing fixed appliance treatment bonded with either glass ionomer or composite adhesive found that there was a significant reduction in the number of white spot lesions only when total treatment time exceeded 16-18 months (Marcusson et al., 1993; Millett et al., 1999).

Glass ionomer cements adhere directly to enamel without the need for additional bonding agents and surface treatments (Millet and McCabe, 1996). The primary mechanism for adhesion is derived from the ability of the acid to clean,

penetrate and roughen the tooth surface which decreases surface energy and facilitates both micromechanical and chemical bonding (McClean, 1996).

#### **d. Resin-modified Glass Ionomer Cements (RMGIC)**

These cements combine the advantages of conventional GICs with the mechanical and physical properties of composite resin cements (Beress et al., 1998). Resin-modified glass ionomer cements undergo both a polymerization reaction (involving the resin monomer) and a significant acid-base reaction (large enough to produce a setting reaction in the dark) (Bourke et al., 1992; McClean et al., 1994). Resin-modified glass ionomer cements that possess photochemical setting reactions also appear to have a reduction in sensitivity to moisture, since the resin network reduces the diffusion of external water into the setting cement (Cho et al., 1995; Shen and Grimaudo, 1994).

### **5. Bracket Base**

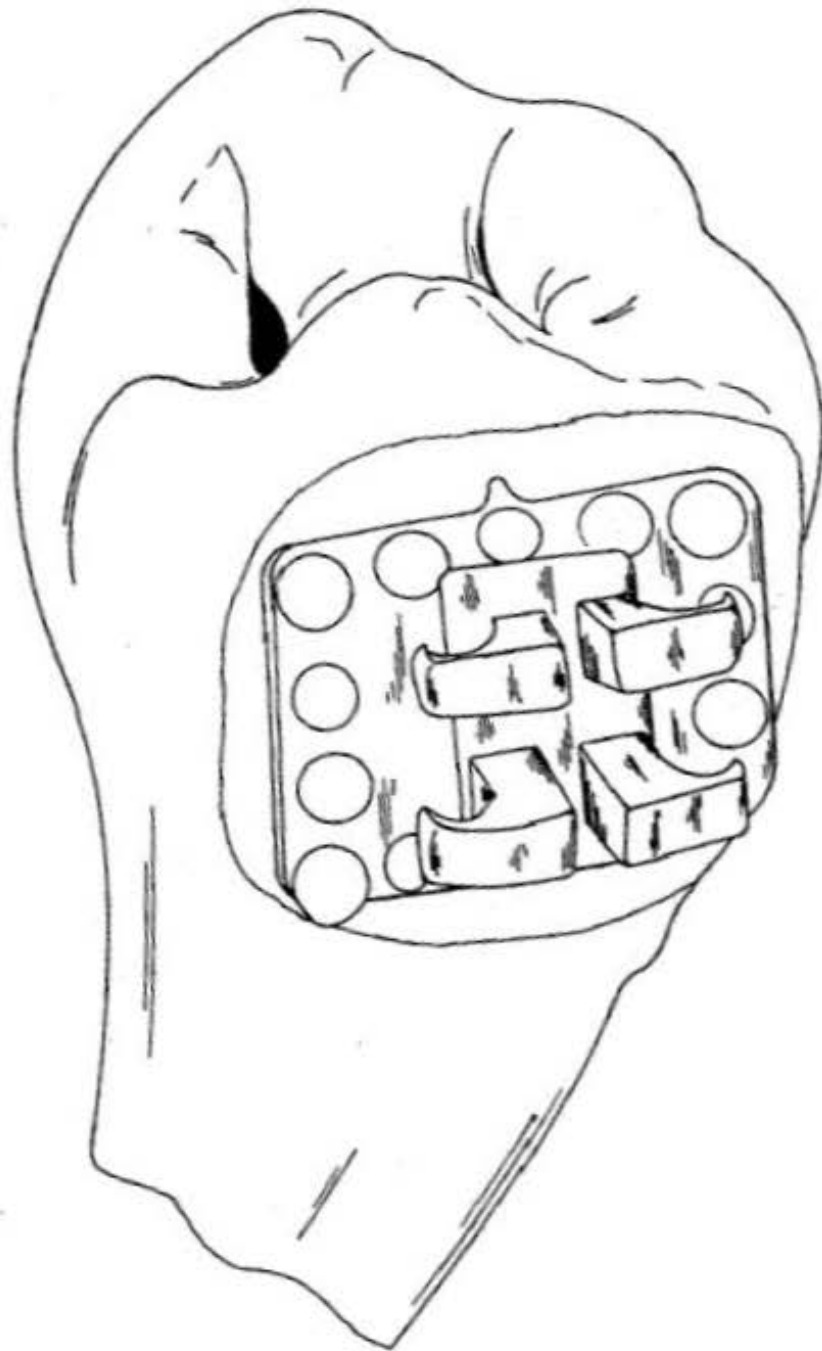
#### **a. Metal**

When using metal brackets, most bonding failures occur between the cement and the bracket (Algera et al, 2008; Knoll et al, 1986; Wang et al, 2004). This holds true when brackets are debonded (Hanson et al, 1983, Simoka et al, 1985). One explanation for this finding may be that metal bracket bases rely on mechanical retention (Lombardi et al, 2007) since they do not form a chemical bond with the adhesive (Furguson et al., 1984).

The initial metal bracket bases were milled from cold-drawn stainless steel and had crude perforated bases (Figure 4) into which adhesive could flow (Sheykholeslam and Brandt, 1977, Thanos et al., 1979). This original base design is no longer used due mainly to: limited mechanical bond strength, plaque retention, and poor esthetics. In an attempt to improve these properties, many types of base surfaces have been developed. One of the first design improvements was the introduction of foil-mesh bracket bases (Figure 5), which resulted in greater bond strength (Reynolds and von Fraunhofer, 1977; Faust et al., 1978, Thanos et al., 1979; Lopez, 1980). This new base design was also shown to have a smoother, less plaque-retentive surface (Maijer and Smith, 1981). In the initial design, the foil mesh was welded to the bracket base. It was later suggested that these weld points lead to stress concentrations in the adjacent resin, decreasing the base bond strength (Dickson et al, 1980; Maijer and Smith, 1981). The solution for this was found by using a laser for welding or mesh attachment by brazing yielding better tensile and shear bond strengths (Dickinson and Powers, 1980; Lopez, 1980; Maijar and Smith, 1981).

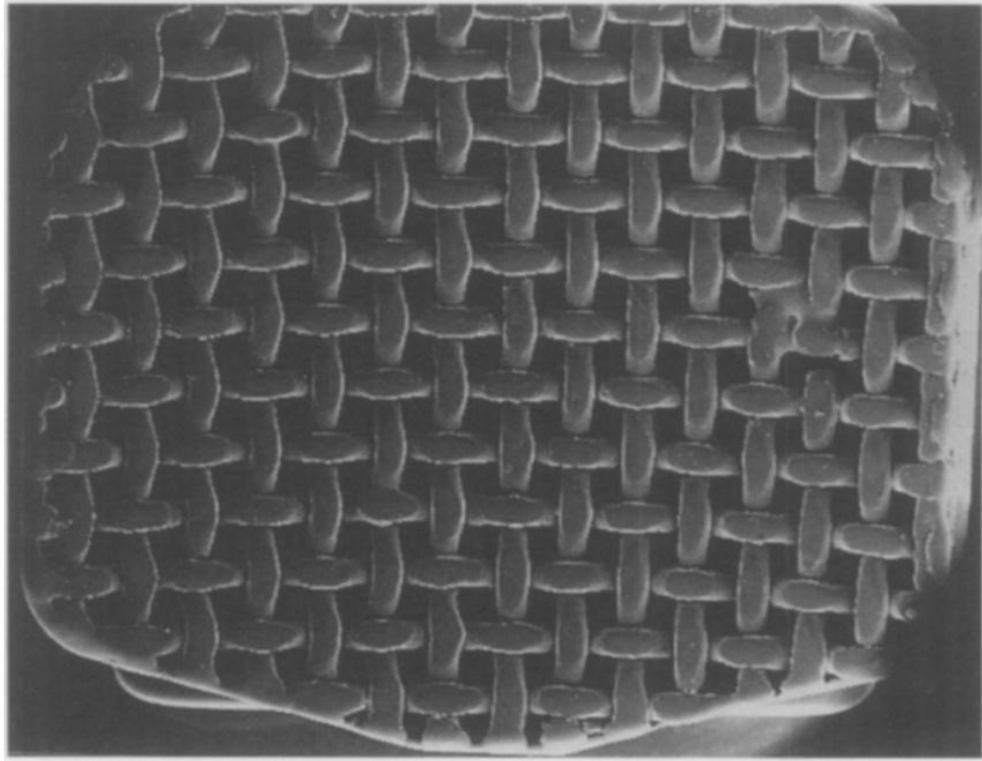


**Figure 4: Perforated bracket base.**



(Waller DE, 1974)

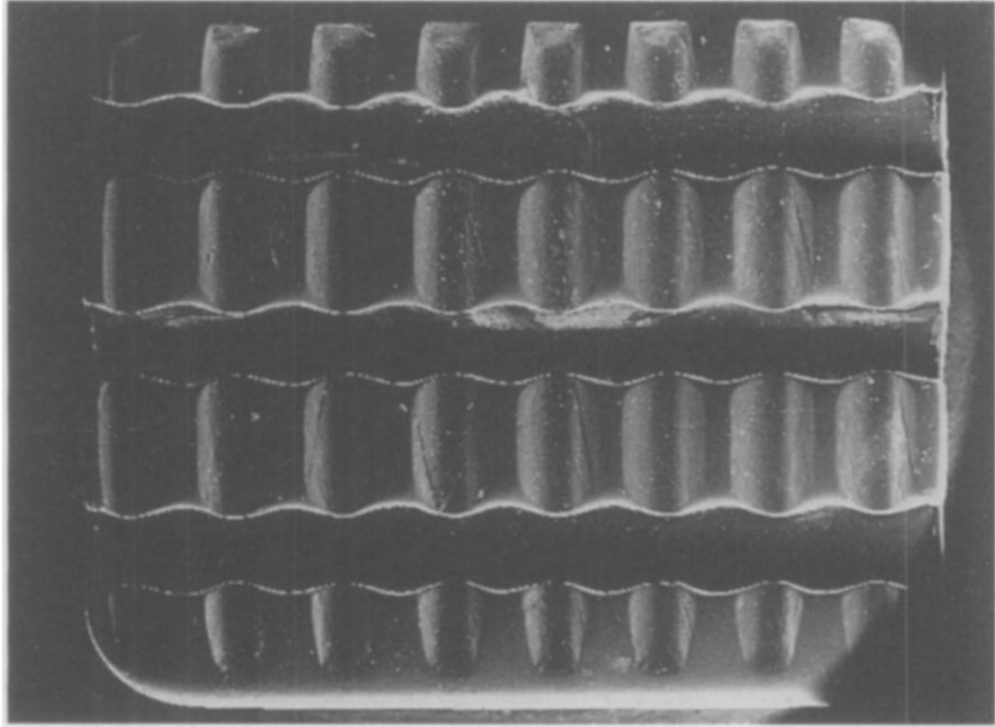
**Figure 5: Foil mesh base.**



(Willems et al, 1997)

Another bracket innovation is the integral base bracket (Figure 6). In this design the bracket and base are cast as an integral unit and incorporate undercut channels for mechanical retention (Mahal, 2000). This type of bracket can be machined (milled) or cast. Of the two designs, cast appears to have greater micro-mechanical retention resulting in higher bond strengths (Regan & van Noort, 1989).

**Figure 6: Cast integral base.**



(Willems et al, 1997)

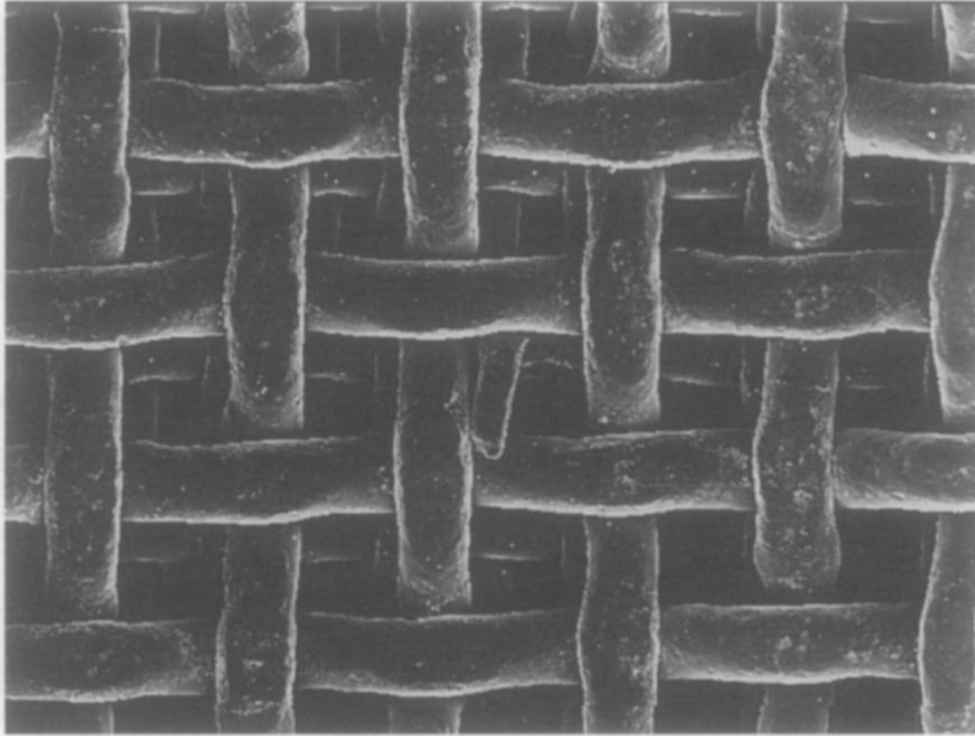
When the different base types are compared, they yield somewhat conflicting results. 80 gauge mesh foil has been found to be the most retentive mesh foil size, providing for large spaces for the penetration of the adhesive and the curing light (Maijer et al, 1981, Sharma-Sayal et al, 2003). However, it has also been found that no significant differences were found between 80 gauge mesh, 100 gauge mesh, and mini and standard-size bases (Cucu et al, 2002). Cast integral bases have shown superior bond strengths when compared with a conventional foil mesh and an integral milled base (Regan & van Noort, 1989). However, mesh-based brackets have been found to be more retentive in tension, whereas metal-based brackets were more retentive in shear (Thanos et al, 1979). Fine-mesh base had higher tensile bond strength than coarse mesh, and both had a higher tensile strength than the undercut base (Smith et al, 1991). Victory Series brackets have shown superior bond strength to the majority of integral base brackets (Cozza et al, 2006). Although no overall trend has been identified to this point, it appears that certain combinations of bracket base and bonding agent perform optimally (Knox et al, 2000; Urabe et al, 1999).

Regan and van Noort (1989) suggested that the adhesive/bracket interface strength may be improved by improving the base design to increase the amount of available undercut while allowing for the escape of air and excess adhesive. In addition, maximum advantage can be taken of the undercut areas if they have a roughened surface to provide additional micromechanical retention. Since light does not travel through metal bracket bases, it has been suggested that polymerization of

a light-cured adhesive resin may be incomplete (Sargison et al., 1995). Knox et al (2000) added that particular base designs may allow improved adhesive penetration or improved penetration of the curing light.

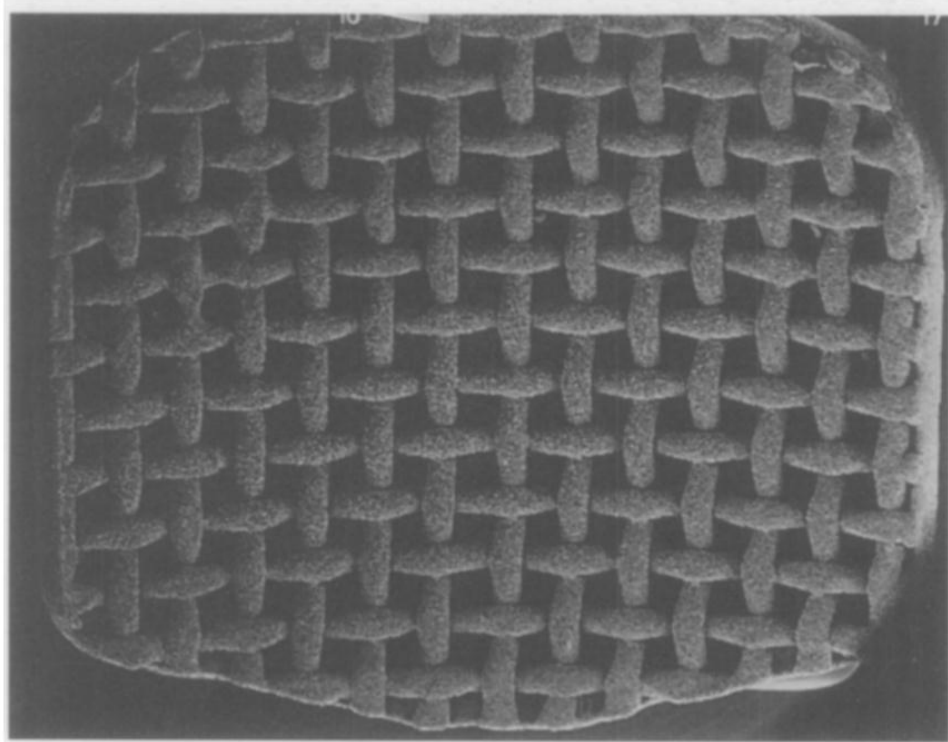
In an effort to further increase micromechanical retention, multiple techniques have been investigated. Examples include: additional photo-etch techniques (laser structuration, electroerosion), double-mesh/super mesh (Figure 7) (Lombardi et al, 2007), sandblasting (Figure 8), etching, surface activation, sintering, and adhesive precoating. Even the surface area of the base has been examined. MacColl (1995) has shown that if a bracket base has a surface area of less than  $6.82 \text{ mm}^2$ , shear bond strength is significantly decreased.

**Figure 7: Super Mesh/Double mesh base.**



(Willems et al, 1997)

**Figure 8: Sandblasted mesh base.**



(Willems et al, 1997)



## **b. Ceramic**

In response to demands for better aesthetics during treatment, ceramic brackets (Figure 9) were introduced in the 1980s (Birnie, 1980; Russell, 2005). Early ceramic brackets used a silane-coupling agent to act as a chemical mediator between the ceramic bracket base and the adhesive resins. This chemical bond resulted in extremely high bond strengths. The combination of the ceramic's high resistance to deformation and the extremely high bond strengths results in enough stress to the enamel during debond to risk enamel damage (Russell, 2005; Forsberg & Hagberg, 1992). Additionally, as the ceramic and cement interface bond strength increases, the incidence of bond failure occurring at the enamel-cement interface increases. Bond failure in this location results in an increased incidence of enamel fractures (Swartz, 1988b; AAO 1989, Harris et al, 1990; Joseph and Rossouw, 1990; Storm, 1990; Machen, 1990). Due to this, the majority of ceramic brackets currently rely solely on mechanical retention. When debonding mechanically retained ceramic brackets the risk of enamel damage is no greater than metal brackets (Habibi et al. 2007)

**Figure 9: Ceramic base.**



(Willems et al, 1997)

Ceramic brackets have other properties to consider. Machined ceramic brackets produce significantly greater frictional forces than stainless steel brackets (Omana et al. 1992). The brittleness of ceramic brackets can cause problems at debond (Gibbs, 1992). The opposing dentition can incur significant enamel wear if in contact with ceramic brackets (Douglas, 1989).

## **6. Lighting**

Tavas and Watts first described the use of visible light to cure the composite resins used to bond orthodontic appliances to enamel in 1979. Light-cured composites have multiple advantages over chemically cured: ease of use, extended working time, improved brackets placement, easier cleanup, and faster cure of the composite (Jonke et al., 2008). Curing light as well as ambient light can affect the ultimate shear bond strength of orthodontic adhesives. Light-cured adhesives are polymerized by a reaction between the catalyst in the adhesive and the photons emitted by the light source (Gange, 2006).

Light-curing units have evolved from heavy, bulky, corded units with halogen lamps to lightweight, portable, light-emitting diode (LED) units. The greatest advantages in light-curing technology have been made with the curing lights, rather than the composites themselves (Gange, 2006). The amount of time required to cure the adhesive depends on the manufacturer's recommendation and the wavelength emitted by the curing light.

## **7. Clinical Bond Strength Requirements**

Accidental bracket debonds continue to cost orthodontists in both treatment time and money. Graber et al (2005) have reported that the median rate of bond failure for practitioners in the United States is around 5%. Reynolds (1975) and Whitlock et al (1994) have reported that a minimum bond strength of 4.9-7.1 MPa is required for successful orthodontic treatment. However, 20-25 MPa can lead to damage of the enamel upon debond due to excessive bond strength (Cal-Neto et al 2006, Yamada et al 2002). An investigation by Retief, (1974) indicated that enamel fractures can occur on debonding with bond strengths as low as 9.7 MPa. Creating the desired location of bond failure and titration of bond strength is a challenging process. If the bond between the cement and the enamel is stronger than the enamel itself, the enamel will fracture during debonding. For example, the use of silane coupling agents on ceramic bases enhances the bond of the luting cement to the ceramic bracket base to the point that it competes with the cohesive strength of enamel (Odegard, 1989; Storm, 1990). The resulting enhanced bond strength between the ceramic bases and the cement results in bond failure at the enamel-cement interface instead of the cement-base interface (Storm, 1990). These factors both contribute to the likelihood of enamel fracture during debonding.

## **8. Bond Failures and ARI**

Bond failure location plays an important role when it comes to chair time and potential damage to the enamel surface (Katona, 1997). Bond failures can be divided into two types: cohesive failure and adhesive failure. Cohesive failures occur within the tooth, the bracket, or the cement. Adhesive failure occurs at the tooth-

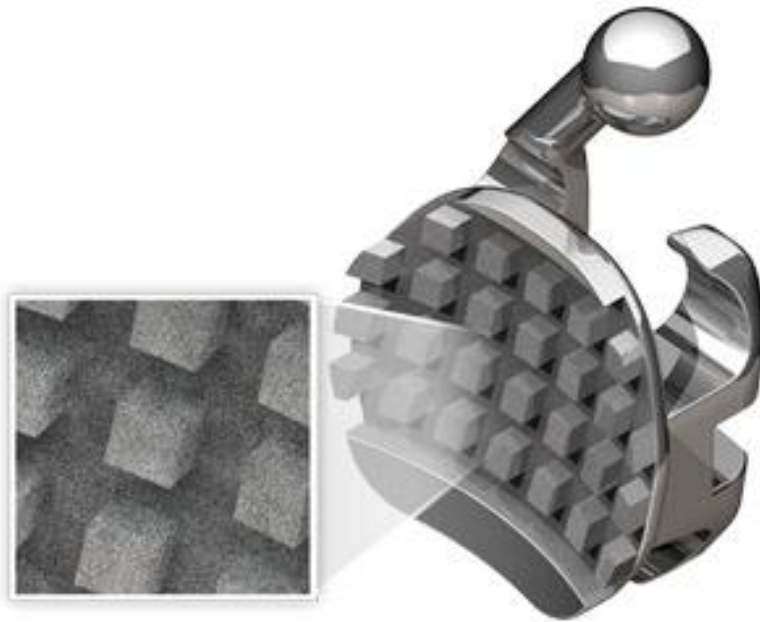
cement and the bracket base-cement interfaces (Compton et al., 1992; Wang and Meng, 1992). The enamel-cement interface is an undesirable bond failure location due to the increased risk of damage to the enamel. In order to protect the enamel surface, the ideal bond failure location when debonding is between the bracket base and the cement (Sinha et al. 1995).

Most bonding failures occur between the cement and the bracket (Algera et al, 2008; Knoll et al, 1986; Wang et al, 2004). The Adhesive Remnant Index (ARI) was formulated by Artun and Bergland (1984) and is used to quantify the amount of cement left on the tooth following debonding of the bracket. The ARI score can be used to identify the sites of bond failure between the enamel, the cement and the bracket base. The traditional ARI scoring system consists of a 4-point scale of 0-3. A score of 0 indicates no cement is left on the tooth, 1 indicates less than half of the cement is left on the tooth, 2 indicates more than half of the cement is left on the tooth, and 3 indicates that all of the cement is left on the tooth including a distinct impression of the bracket base.

To test the shear bond strength of different pylon orientations, 75 of ODP's (Orthodontic Design and Production) ANCHOR-LOCK™ PAD based brackets were used (Figure 10). ODP claims, "The ANCHOR-LOCK™ PAD utilizes pylons instead of the traditional mesh mechanical retention system. ANCHOR-LOCK™ bases are designed with an EDM (Electrical Discharge Machining) finish on all five pylon surfaces to maximize bracket retention, and the pylons are engineered at an acute

angle relative to the torque, generating geometric undercuts when bonded” (ODP Website, 2012).

**Figure 10: ODP's Comfort Zone™ Series with Anchor-Lock™ Pad.**



**(Anchor-Lock™ Pad)**

Geometrically, an acute pylon angle should provide the greatest mechanical retention and therefore the highest bond strength. However, Knox et al (2001) found that acute cement-enamel angles resulted in an increased chance of singularity development and attachment failure (i.e., the stress points created by these acute angles could lead to failure). This study examines the effect of acute, perpendicular, and obtuse pylon orientation on shear bond strength.

## **II. OBJECTIVES**

### **A. Purpose of the Present Study**

The purpose of this *in vitro* study is to determine if retention pylon orientation affects shear bond strength of orthodontic brackets.

### **B. Specific Hypothesis**

An acute pylon orientation (from the facial to the occlusal surface) will have significantly higher shear bond strength than an obtuse pylon orientation.

### **C. Null Hypothesis**

Pylon orientation does not significantly affect shear bond strength.



### **III. MATERIAL AND METHODS**

#### **A. Experimental Design**

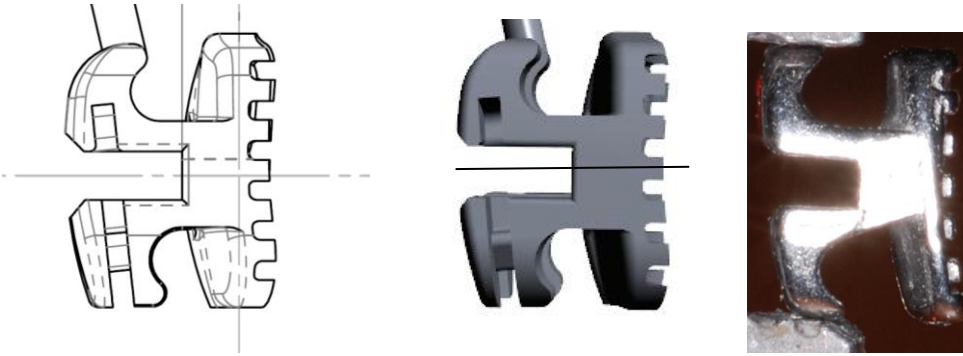
ODP ANCHOR-LOCK™ bracket pad's manufacturing process requires that the bracket slot is parallel to the pylons. For this reason, the maxillary canine MBT bracket prescription was selected in order to allow for multiple pylon orientations (-7, 0, and +7 degrees), while minimizing differences in bracket specifications. 75 brackets were separated into three groups of 25. The three groups were divided according to their pylon orientation and were labeled: Group 1 (0 degree brackets with 90 degree/perpendicular pylons), Group 2 (-7 degree brackets, with acute pylons to shear force), and Group 3 (-7 degree bracket flipped 180 degrees to achieve +7 degree bracket with an obtuse pylon to shear force) (Figure 11).

To ensure the bond failures took place at the adhesive-base interface, the brackets were bonded to a solid Transbond XT™ surface. This surface was created using a stainless-steel bracket jig (40mm high with a 58mm diameter). Undercuts were added to the bonding sites to firmly secure the composite into the cylinder. Transbond XT™ was pressed into the cylinder's undercuts and formed to the contoured surface with a mylar strip. The Transbond XT™ was then light cured with a VALO™ (ULTRADENT, SOUTH JORDAN, UT) curing light at a constant distance and angle for 10 seconds from the occlusal and 10 seconds from the gingival. The curing light was tested prior using a resin calibrator (BlueLight™ analytics, HALIFAX, NOVA SCOTIA, CANADA) to ensure adequate and consistent curing. The reading for the VALO™ (ULTRADENT, SOUTH JORDAN, UT) curing light was 1300

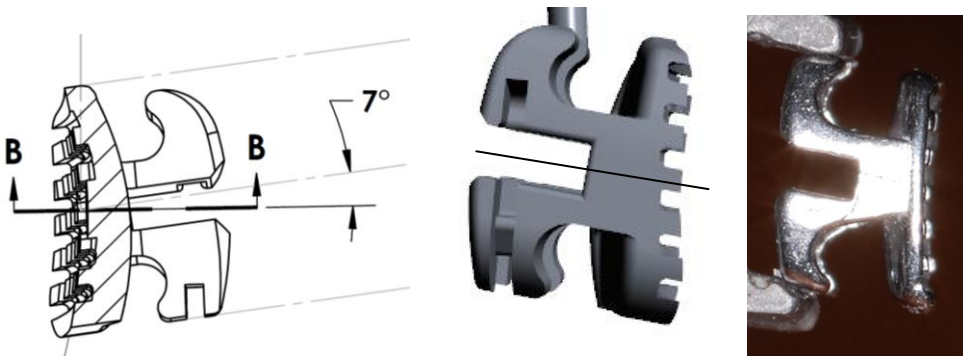
mW/cm<sup>2</sup>. The Transbond XT<sup>TM</sup> surface was then micro-etched since trials demonstrated a weak point at the solid adhesive surface and bracket base adhesive without this step. Immediately after, Transbond XT<sup>TM</sup> was pressed/buttered onto the bracket base and the bracket base was pressed onto the jig's Transbond XT<sup>TM</sup> surface. The technique used a height gage and the same provider for consistent bracket placement. The excess composite material was removed with an explorer. The seated bracket was then light cured at a constant distance and angle for 10 seconds from the gingival and 10 seconds from the occlusal (Figure 12).

**Figure 11: Pylon Orientation Groups**

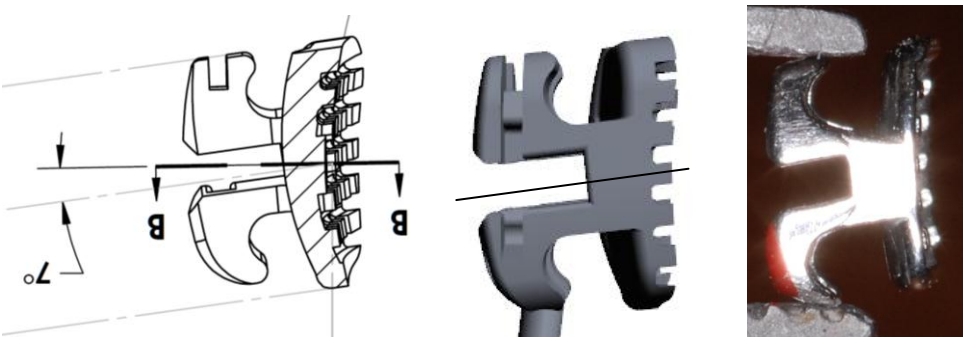
**A - Group 1: 0 degree bracket**



**B - Group 2: -7 degree bracket**



**C - Group 3: +7 degrees (achieved by flipping -7 degree bracket)**



**Figure 12: Specimen Preparation**

**A - Stainless-steel bracket jig (40mm high with a 58mm diameter).**



**B - Transbond XT™ was pressed into the cylinder's undercuts.**



**Figure 12: Specimen Preparation (Continued)**

**C - Formed to the contoured surface with a mylar strip and light cured with the VALO™ (ULTRADENT, SOUTH JORDAN, UT) curing light at a constant distance and angle for 10 seconds from the occlusal and 10 seconds from the gingival direction.**



**D - Transbond XT™ was pressed/buttered onto the bracket base.**



**Figure 12: Specimen Preparation (Continued)**

**E - The bracket base was pressed onto the jig's Transbond XT™ surface. The technique used a height gage and the same provider for consistent bracket placement.**



**F - The seated bracket was then light cured at a constant distance and angle for 10 seconds from the gingival and 10 seconds from the occlusal.**



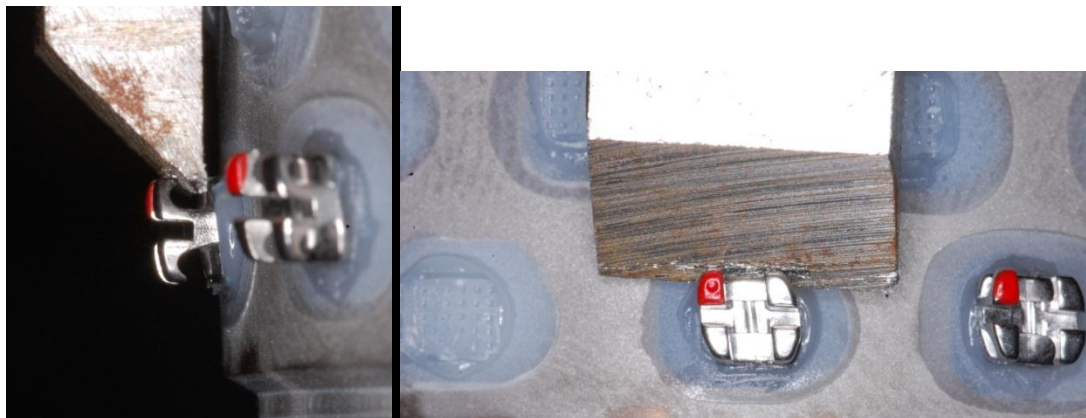
The samples were loaded into a universal testing machine (Instron<sup>®</sup> Corp, Model 5543, Canton, MA), and a straight blade using a crosshead speed of 1.0mm/min descended upon the bracket until bonding failure occurred (Figure 13). Shear bond values in Megapascals (MPa) were calculated from the peak load of failure (in Newtons) divided by the specimen surface area (0 deg brackets= 18.7666 mm<sup>2</sup>, +/-7 deg brackets = 18.8928 mm<sup>2</sup>) provided by the bracket manufacturer in square inches. This was converted to square millimeters in order to complete the Megapascal calculations. The 0 degree bracket base area is 0.02908835 square inches= 18.7666 square millimeters. The -7 degree bracket base area is 0.02928405 square inches= 18.8928 square millimeters (Table 1 and Figure 14). The mean and standard deviation were determined for each group.

**Figure 13: Instron® Universal Testing Machine Shear Force**

**A - The samples were loaded into a universal testing machine (Instron® Corp, Model 5543, Canton, MA).**



**B - A straight blade using a crosshead speed of 1.0mm/min descended upon the bracket until bonding failure occurred.**





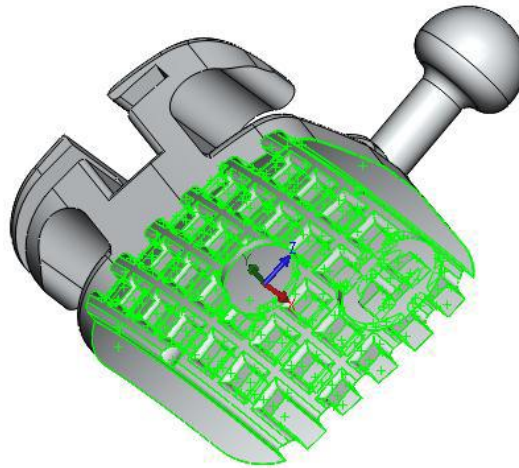
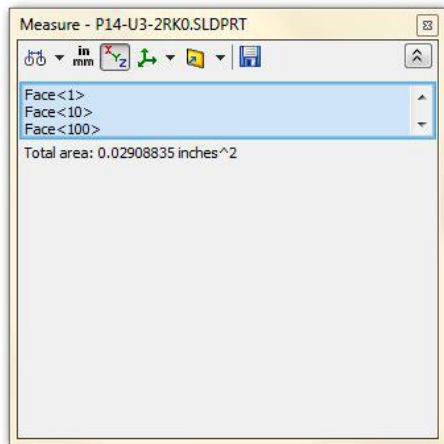
**Table 1: Bracket Base Surface Area**

**Convert square inches to square millimeters.**

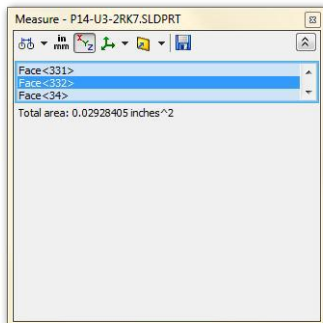
Bracket Base S.A.	mm <sup>2</sup>	ln <sup>2</sup>
Group 1 (0 degree bracket)	18.7666	0.02908835
Group 2 (-7 degree bracket)	18.8928	0.02928405
Group 3 (+7 degree bracket)	18.8928	0.02928405

**Figure 14: Bracket Base Surface Area**

**A - Zero degree bracket**



**B - Negative seven degree bracket (Also used as + seven degree bracket)**



## **B. Statistical Management of Data**

An analysis of variance, one-way ANOVA test was then performed to determine if there was a significant difference between the three different pylon orientations. The established alpha factor was 0.05, meaning that a p-value less than 0.05 would result in the rejection of the null hypothesis at the 5% significance level. We then incorporated a Tukey HSD test to help determine which orientations are significantly different from one another accounting for the standard error.

A modified Adhesive Remnant Index (ARI) was used to evaluate the amount of adhesive left on the bracket base after debonding to establish the sites of adhesive fracture. The ARI scoring was done by an individual unassociated with this study to prevent bias in scoring. Brackets were observed with magnification (Nikon SNZ-1B at 10X magnification), and the adhesive remaining was scored with respect to the amount of resin material remaining: ARI 0, no adhesive retained on the bracket base with a clear and distinct impression of the bracket base on the substrate; ARI 1, less than half of the adhesive retained on the bracket base; ARI 2, more than half of the adhesive retained on the bracket base; ARI 3, all of the adhesive retained on the bracket base. See Table 2 and Figure 15.

**Table 2: ARI Legend**

ARI Score	% of Bracket Base Covered by Adhesive
0	0
1	1-50
2	51-99
3	100

**Figure 15: ARI Examples**

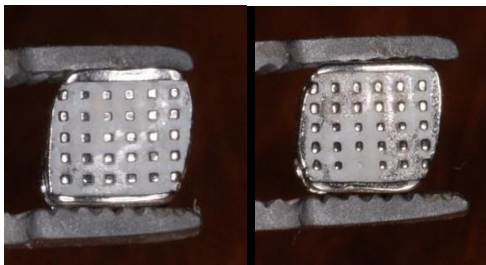
**A - ARI=0: 0% Bracket Base Covered by Adhesive.**



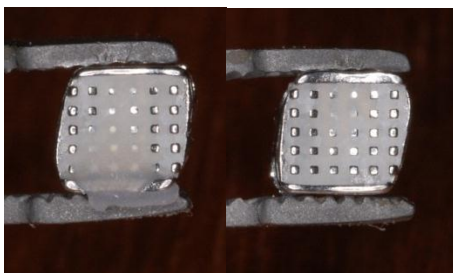
**B - ARI=1: 1-50% Bracket Base Covered by Adhesive.**



**C - ARI=2: 51-99% Bracket Base Covered by Adhesive.**



**D - ARI=3: 100% Bracket Base Covered by Adhesive.**



The Kruskal Wallis test was used to evaluate the ARI. This was done since the Kruskal Wallis test is the nonparametric equivalent of the one-way ANOVA analysis and can be used to determine if there is a significant result in the grouped data. The Mann-Whitney test was then run to help determine which groups ARI were significantly different from each other.

#### IV. RESULTS

Table 3 shows the average shear bond strength and ARI value for Group 1 (0 degree bracket with 90 degree Pylon orientation): 97.7 N (SD= 18.6), 5.21 MPa (SD= 1), and 2.1 ARI (SD= 0.4). Table 4 shows the average shear bond strength and ARI value for Group 2 (-7 degree bracket with acute Pylon orientation): 99.4 N (SD= 9.8), 5.26 MPa (SD= 0.5), and 2.0 ARI (SD= 0.4). Table 5 shows the average shear bond strength and ARI value for Group 3 (+7 degree bracket with Obtuse Pylon orientation): 79.0 N (SD= 18.7), 4.18 MPa (SD= 1), and 1.1 ARI (SD= 0.3). Table 6 compares the averages of all three groups.

**Table 3: Group 1 (0 degree bracket, 90 degree Pylon Orientation)  
Shear Bond Strength and ARI Values**

Bracket Test #	Peak load of failure (N)	MPa= N/(mm <sup>2</sup> )	ARI
1	108.511	5.78	2.00
2	51.009	2.72	3.00
3	93.425	4.98	2.00
4	98.878	5.27	2.00
5	129.146	6.88	2.00
6	86.989	4.64	2.00
7	110.617	5.89	2.00
8	96.951	5.17	2.00
9	120.523	6.42	2.00
10	123.718	6.59	2.00
11	102.382	5.46	2.00
12	90.829	4.84	2.00
13	74.055	3.95	3.00
14	118.856	6.33	3.00
15	90.768	4.84	2.00
16	88.819	4.73	2.00
17	126.102	6.72	2.00
18	95.574	5.09	2.00
19	70.858	3.78	2.00
20	91.312	4.87	2.00
21	101.496	5.41	2.00
22	85.359	4.55	1.00
23	77.301	4.12	2.00
24	108.392	5.78	2.00
25	100.854	5.37	2.00
Average	97.709	5.21	2.08
Standard Deviation	18.5604	0.99	0.4



**Table 4: Group 2 (-7 degree bracket, Acute Pylon Orientation to shear force)  
Shear Bond Strength and ARI Values**

Bracket Test #	Peak load of failure (N)	MPa= N/(mm <sup>2</sup> )	ARI
1	107.887	5.71	2.00
2	93.273	4.94	2.00
3	108.260	5.73	3.00
4	105.541	5.59	2.00
5	111.118	5.88	2.00
6	84.023	4.45	2.00
7	96.795	5.12	2.00
8	99.832	5.28	2.00
9	96.307	5.10	2.00
10	98.135	5.19	2.00
11	87.173	4.61	2.00
12	81.644	4.32	2.00
13	109.656	5.80	2.00
14	101.790	5.39	2.00
15	108.296	5.73	2.00
16	91.684	4.85	2.00
17	88.462	4.68	2.00
18	111.787	5.92	2.00
19	99.825	5.28	2.00
20	109.383	5.79	3.00
21	96.171	5.09	2.00
22	109.946	5.82	2.00
23	109.644	5.80	2.00
24	80.856	4.28	1.00
25	96.412	5.10	2.00
Average	99.356	5.26	2.04
Standard Deviation	9.7559	0.52	0.351188

**Table 5: Group 3 (+7 degree bracket- Obtuse Pylon Orientation to shear force)  
Shear Bond Strength and ARI Values**

Bracket Test #	Peak load of failure (N)	MPa= N/(mm <sup>2</sup> )	ARI
1	8.307	0.44	1.00
2	81.620	4.32	1.00
3	70.147	3.71	1.00
4	85.714	4.54	1.00
5	96.580	5.11	1.00
6	84.714	4.48	1.00
7	99.631	5.27	2.00
8	101.364	5.37	1.00
9	81.709	4.32	1.00
10	89.450	4.73	1.00
11	81.382	4.31	1.00
12	81.292	4.30	1.00
13	68.512	3.63	1.00
14	58.462	3.09	1.00
15	75.424	3.99	1.00
16	66.985	3.55	1.00
17	70.462	3.73	1.00
18	92.746	4.91	1.00
19	72.014	3.81	1.00
20	71.939	3.81	1.00
21	101.791	5.39	2.00
22	79.016	4.18	2.00
23	80.294	4.25	1.00
24	79.042	4.18	1.00
25	95.623	5.06	1.00
Average	78.969	4.18	1.12
Standard Deviation	18.67447	0.99	0.33166

**Table 6: Group Means Compared**

Group (N=25)		N (Newtons)		MPa (Megapascals)		ARI (Adhesive Remnant Index)	
Group	Degrees	Mean	St Dev	Mean	St Dev	Mean	St Dev
1	0	97.709	18.5604	5.21	0.99	2.08	0.4
2	-7	99.356	9.7559	5.26	0.52	2.04	0.351188
3	+7	78.969	18.67447	4.18	0.99	1.12	0.33166

### **Comparing shear bond strengths**

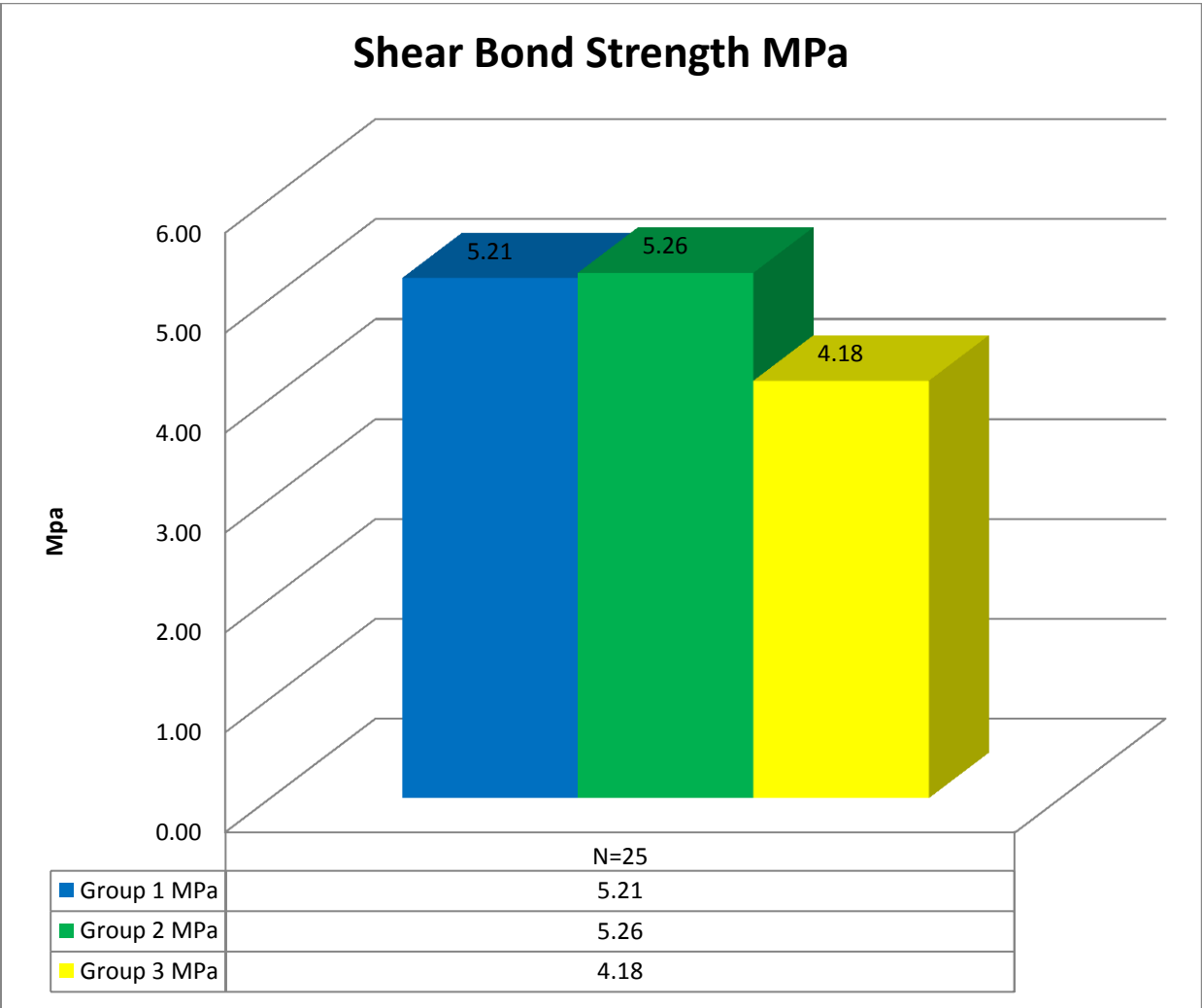
The Univariate Analysis of Variance revealed a significant difference among the three groups;  $p < 0.001$ . The Tukey HSD test revealed which groups were significantly different from each other (Table 7 and Figure 16). Group 3 was found to have significantly lower shear bond strength than groups 1 and 2 ( $P < 0.001$ ). Groups 1 and 2 were not significantly different from each other.

**Table 7: Tukey HSD**

MPa (Std. Deviation)		
Group	a	b
1) 0 deg	5.2072 (0.9875)	
2) -7 deg	5.2580 (0.5165)	
3) +7 deg		4.1792 (0.9849)

*Groups under the same letter column are not significantly different ( $P > 0.05$ ). Group 3 is significantly different from groups 1 and 2 ( $P < 0.001$ ).*

Figure 16: Shear Bond Strength MPa



**ARI (Adhesive Remnant Index)**

The mean ARI score for each group was: group 1= 2.1, group 2= 2.0, and group 3= 1.1. When comparing the adhesive remnant indexes, the Kruskal-Wallis Test revealed a significant difference exists between the groups ( $P < 0.001$ ). The Mann-Whitney Test revealed that group 3 retained significantly less adhesive in the bracket base (lower adhesive remnant score) than groups 1 and 2. Groups 1 and 2 were not significantly different from each other (Table 8 and Figure 17).

**Table 8: Mann-Whitney Test**

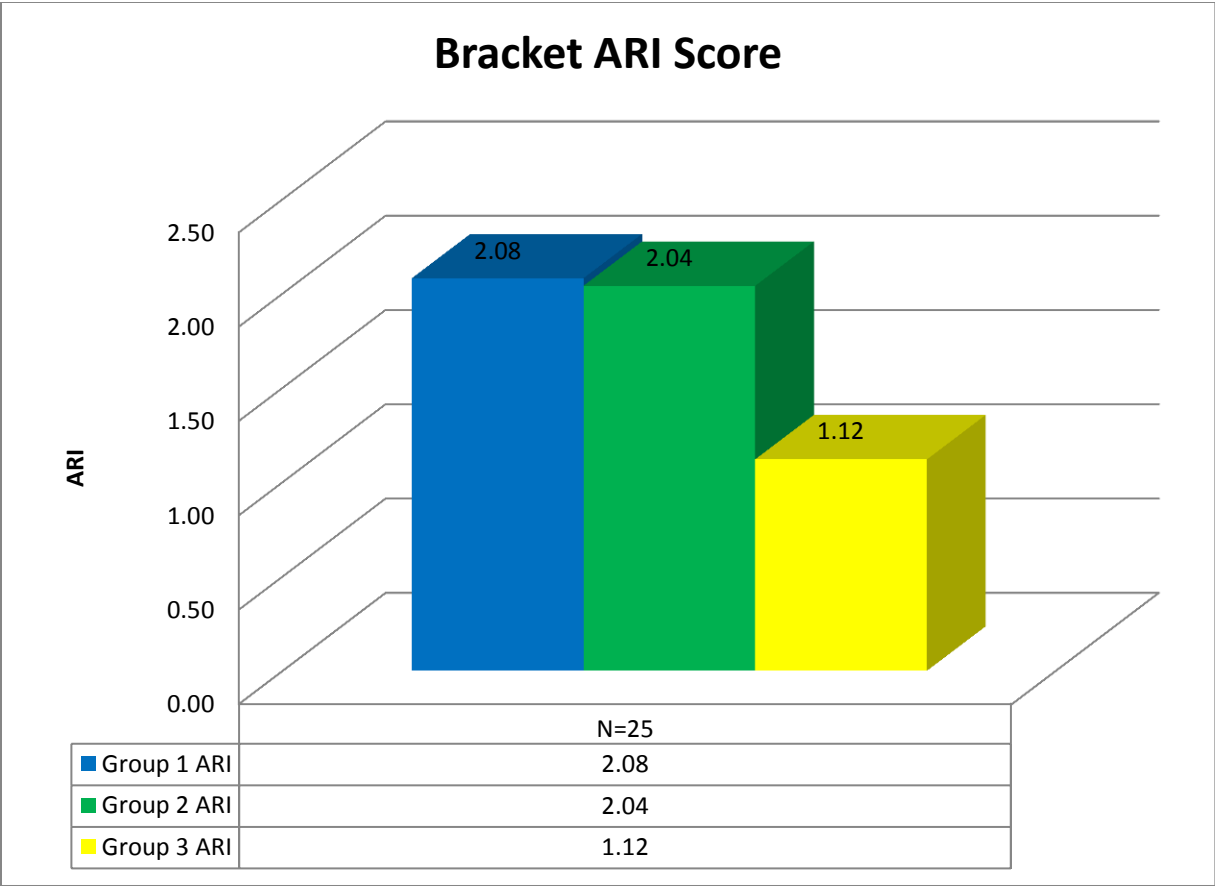
**ARI Average (Std. Deviation)**

Group		a	b
1)	0 deg	2.08 (0.4)	
2)	-7 deg	2.04 (0.35)	
3)	+7 deg		1.12 (0.33)

*Groups under the same column letter are not significantly different ( $P > 0.05$ ). Group 3 is significantly different from groups 1 and 2 ( $P < 0.001$ ).*



**Figure 17: Bracket ARI (Adhesive Remnant Index) Score**



In summary, the results indicate that a significant difference exists between bracket orientation, shear bond strength and ARI. Group 3 (+7 degree bracket, obtuse pylon orientation) had significantly lower shear bond strength than groups 1 and 2. Group 3 also retained significantly less adhesive on the bracket base.

## V. DISCUSSION

Bond strength of orthodontic brackets has been studied for more than thirty years. The key features of bracket bond strength orthodontists have been searching for include: withstanding functional and mechanical forces while remaining bonded to the tooth for the duration of treatment, and at the end of treatment being able to easily remove the bracket without damaging the tooth surface (Richardson, 2010). Even though considerable progress has been made regarding the titration of bond strength and conservation of enamel, accidental debonds remain a source of frustration for both patients and practitioners alike.

Extensive literature exists regarding different types of bracket bases and their affect on shear bond strength; however, this researcher has not discovered any literature that examined the orientation of base pylons and its affect on shear bond strength.

The purpose of this *in vitro* study was to determine if retention pylon orientation affects shear bond strength of orthodontic brackets. 75 of ODP's (Orthodontic Design and Production) ANCHOR-LOCK™ PAD based brackets were used to test this question. The results indicated the 90 degree and acute pylon orientation angles were significantly more resistant to shear forces than an obtuse angle ( $P < 0.001$ ). The 90 degree and acute angles also retained significantly more of the adhesive in the bracket base ( $P < 0.001$ ) as determined by the ARI (Adhesive Remnant Index).

Reynolds (1975) and Whitlock et al (1994) have reported that a minimum bond strength of 4.9-7.1 MPa is required for successful orthodontic treatment. All pylon orientations tested with the exception of the obtuse pylon orientation (+7 degrees) fell within this range. The negative 7 degree bracket averaged 5.26 MPa, the 0 degree bracket averaged 5.21 MPa and the positive 7 degree bracket averaged 4.18 MPa. Overall, these values were somewhat low debond strengths. Especially when considering that more modern shear bond strength studies report desired bond strengths of 8-12 MPa (Bishara et al, 2001; Bishara et al, 2005). However, this experiment focused on the comparison between different pylon orientations (while limiting as many variables as possible) rather than focusing on absolute shear bond strength values. Differences existed between the in vitro model and the clinical application that may significantly change the raw MPa value. Perhaps the most significant difference was the use of a Transbond XT block as a bonding substrate instead of enamel.

Bonding to secured blocks of Transbond XT allowed for consistency and close observation on how the failure took place within the adhesive layer or within the bracket base-cement interface. However, the additional thickness of the Transbond XT may have introduced unknown variables. For example, bonding to a secured block of Transbond XT may have allowed more distortion at the adhesive surface than enamel would have during shear force application.

The shapes and orientation of the brackets were not identical. Minor differences exist between the 0 degree and -7 degree brackets. The +7 degree

bracket was the -7 degree bracket flipped 180 degrees. These differences may also have had an effect on shear bond strength. We did not only vary the pylon orientation and keep other bracket features identical due to the current manufacturing process. The current manufacturing process requires that the pylon orientation is in the same plane as the arch wire slot.

ODP's ANCHOR-LOCK™ PADs are currently designed to create geometric undercuts relative to the torque (ODP Website, 2012). The results of this study suggest that this bracket design is more guarded against debonding from the mechanical forces of torqueing than if the bracket was designed with an obtuse angle relative to the torque. However, a 90 degree angle relative to the torque may offer statistically similar bond strength. It is important to note that the statistical differences may not equate into clinical importance.

In *vivo*, bonded brackets are exposed to dynamic forces. Hammad et al (2012) found survival rates did not show significant differences between the upper and lower dental arches ( $P > 0.05$ ), torquing forces may be the most appropriate force to guard against. However, in 2002, Adolfsson et al did find that bond failure rates have been shown to be significantly higher in the mandible. This suggests that biting forces are worth considering. The average biting force that an individual produces during chewing is 14kg (137N) and the average maximum biting force is 31 Kg (304 N) (Proffit, et al 1983).

An interesting finding was that there was not a significant difference in shear bond strength between 90 degree and acute pylon orientation. Further examination

on the range of pylon orientations is needed, but this suggests that having acutely-angled pylons does not offer increased bond strength in comparison to pylons at a right angle to the substrate surface. There was also no significant difference between ARI (adhesive remnant index) scores between these two groups. This means that the amount of cement left on the substrate surface is similar for both the 90 degree and acute angle groups.

These findings could lead to innovations for bracket removal. The same bracket could have different shear bond strengths depending on the direction of force applied in regards to pylon orientation. Ideally, for maximum retention, the pylons would be oriented in either a 90 degree or at an acute angle relative to the expected forces the bracket will have to endure. In addition, the bracket base would have an obtuse pylon orientation relative to the intentional debond force direction to decrease the force needed. For example, a mandibular bracket could have its acute angle facing occlusally to resist mastication forces and its obtuse angle from the gingiva to decrease the force needed to debond in an occlusal direction. Theoretically this would result in equal greater resistance against accidental debonds and increased ease (i.e. decreased force required to remove bracket) of intentional debonds. While using a debonding force to obtain an obtuse pylon direction would decrease the force required, it would also result more adhesive being left on the tooth surface. This bracket cement interface is the ideal failure site to maintain enamel integrity (Sinha et al, 1995). However, this would lead to increased difficulty of enamel clean-up (Brown, 1978; Pus, 1980). According to Van

Waes (1996), although the average enamel loss that occurs while removing orthodontic adhesive with carbide burs is only 7.4  $\mu\text{m}$ , great care must be taken to avoid excessive damage to the enamel surface.

## **VI. CONCLUSIONS**

This study concluded that pylon orientation affects shear bond strength. Significantly higher shear bond strengths are associated with perpendicular and acute angles of pylons (from the direction of the force applied) in comparison to an obtuse angle. However, at the angles tested ( $\pm 7$  degrees), acute pylon orientation did not significantly increase bond strength in comparison to a 90 degree angle. It is likely that once a certain acute degree is reached, the trend would begin to reverse itself and lead to lower shear bond strengths. Continued research needs to be done to compare the entire range of possible pylon orientations and their associated shear bond strengths. This information could be used to ensure we are achieving the maximum bond strength possible, or conceivably customize brackets to resist different levels of shear bond strength depending on location and forces the bracket is subjected to. Additionally, the potential exists to affect the ease of intentional debonds by varying the pylon orientation and direction of force applied.

This study also found that pylon orientation affects the ARI (adhesive remnant index) score. Higher ARI scores (more cement remaining in the bracket and by inference, less cement remaining on the substrate surface) are associated with a perpendicular and an acute angle of pylons from the direction of force applied. At the angles tested, having an acute angle ( $\pm 7$  degree bracket) instead of a 90 degree

angle did not significantly increase ARI score. In summary, obtuse pylon orientation to shear force applied results in less cement remaining on the bracket surface (more on the substrate surface) and 90 degree and acute pylons result in more cement remaining on the bracket surface (less on the substrate surface).

The results of this study cannot be directly compared to in vivo conditions; however, the results do show an interesting pattern. These finding could prove clinically significant in the following ways:

1. To be able to ensure maximum achievable bond strength of pylon bases if desired.
2. The ability to titrate pylon orientation in order to meet the desired debond strength of each bracket.
3. Titrating pylon orientation to achieve a desired adhesive failure location leaving as much or as little adhesive on the tooth surface as desired.
4. Designing bracket bases to have significantly different shear bond strengths depending on the direction in which the force is applied.



## Literature Cited

Adolfsson U, Larsson E, Ogaard B. Bond failure of a no-mix adhesive during orthodontic treatment. *Am J Orthod Dentofacial Orthop* 2002; 122(3):277-81.

Algera TJ, Kleverlaan CJ, Prah-Andersen B, Feilzer AJ. The influence of different bracket base surfaces on tensile and shear bond strength. *European Journal of Orthodontics* 2008; 30(5):490-494.

American Association of Orthodontics. Summary of ceramic bracket survey. *The Bulletin Supplement* 1989; 7:Winter.

Arnold RW, Combe EC, Warford JH Jr. Bonding of stainless steel brackets to enamel with a new self-etching primer. *Am J Orthod Dentofacial Orthop* 2002; Sep:122(3):274-276.

Artun J, Bergland S. Clinical trials with crystal growth conditioning as an alternative to acid-etch enamel pre-treatment. *Am J Orthod Dentofacial Orthop* 1984; 85(4):333-340.

Ashcraft DB, Staley RN, Jakobsen JR. Fluoride release and shear bond strength of three light-cured glass ionomer cements. *Am J Orthod Dentofacial Orthop* 1997; 111:260-265.

Basaran G, Özer T, Berk N, Hamamcı O. Etching Enamel for Orthodontics with an Erbium, Chromium:Yttrium-Scandium-Gallium-Garnet Laser System. *The Angle Orthodontist* 2007; 77(1):117-124.

Beress A, Tjan AH, Schlenker WL. Bond strengths of two resin-modified glass polyalkenoate cements under different surface conditions. *J Clin Orthod* 1998; 32(5):299-302.

Birnie D. Comment of ceramic bracket bonding. *Am J Orthod Dentofacial Orthop* 1995; 108:18A.

Bishara SE, Olsen ME, Sulieman A. Comparison of debonding forces between different tooth types. *Hellenic Orthodontic Review* 1999; 2(1):9-16.

Bishara SE, Poonsombat C, Soliman MMA, Warren JJ, Laffoon JF, Ajlouni R. Comparison of bonding time and shear bond strength between a conventional and a new integrated bonding system. *Angle Orthodontist* 2005; 75(2):237-242.

Bishara SE, VonWald L, Laffoon JF, Warren JJ. Effect of a self-etch primer/adhesive on the shear bond strength of orthodontic brackets. *Am J Orthod Dentofacial Orthop* 2001; 119(6):621-624.

Bourke AM, Walls AW, McCabe JF. Light activated glass polyalkenoate (ionomer) cement: the setting reaction. J Dent 1992; 20:115-120.

Bowen RL. Dental filling material comprising vinyl silane treated fused silica and a binder consisting of bisphenol and glycidyl acrylate. U.S. Patent Office 1962; Pat. No. 3:066,112.

Brodie AG. Orthodontic History and What It Teaches. The Angle Orthodontist 1934; 4(1):85-97.

Brown CRL, Way DC. Enamel loss during orthodontic bonding and subsequent loss during removal of filled and unfilled adhesives. Am J Orthod Dentofacial Orthop 1978; 74:663-671.

Buonocore MG. A simple method of increasing the adhesion of acrylic filling materials to enamel surfaces. J Dent Res 1955; 34:849-53.

Cacciafesta V, Sfondrini MF, Angelis MD, Scribante A, Klersy C. Effect of water and saliva contamination on shear bond strength of brackets bonded with conventional, hydrophilic, and self-etching primers. Am J Orthod Dentofacial Orthop 2003; 123(6):633-640.

Cal-Neto JP, Miguel JAM. Scanning Electron Microscopy Evaluation of the Bonding Mechanism of a Self-etching Primer on Enamel. Angle Orthodontist 2006; 76(1):132-136.

Cartenson W. The effects of different phosphoric acid concentrations on surface enamel. The Angle Orthodontist 1992; 62:51-58.

Cartenson W. Clinical results after direct bonding of brackets using shorter etching times. Am J Orthod Dentofacial Orthop 1986; 89:70-72.

Cehreli ZC, Kecik D, Kocadereli I. Effect of self-etching primer and adhesive formulations on the shear bond strength of orthodontic brackets. Am J Orthod Dentofacial Orthop 2005; May:127(5):573-579.

Cehreli SB, Eminkahyagil N. Effect of active pretreatment of self-etching primers on the ultramorphology of intact primary and permanent tooth enamel. Journal of Dentistry for Children 2006; May-Aug:73(2):86-90.

Cho E, Kopel H, White SN. Moisture susceptibility of resin-modified glass ionomer materials. Quint Int. 1995; 26(5):351-358.

Chow LC, Brown WE. Phosphoric and conditioning of teeth of pit and fissures sealants. J Dent Res 1973; 52:1158.

Combe EC, Burke FTJ. Contemporary resin-based composite materials for direct placement restorations: packables, flowables and others. Dental Update 2000; 27:326-336.

Compton AM, Meyers C, Hondrum S, Lorton L. Comparison of the shear bond strength of a light cured glass ionomer and a chemically cured glass ionomer for use as an orthodontic agent. *Am J Orthod Dentofacial Orthop* 1992; 104:138-144.

Cozza P, Martucci L, De Toffol L, Penco SI. Shear Bond Strength of Metal Brackets on Enamel. *Angle Orthodontist* 2006; Sep:76(5):851-856.

Craig RG. *Restorative Dental Materials* (ed 10). Mosby Publishing. St. Lois 1997; 196-198.

Creanor SL, Carruthers LMC, Saunders WP, Strang R, Foye RH. Fluoride uptake and release characteristics of glass ionomer cement. *Caries Res.* 1994; 28:322-328.

Cucu M, Driessen CH, Ferreira PD. The influence of orthodontic bracket base diameter and mesh size on bond strength. *SADJ.* 2002; Jan:57(1):16-20.

Denys FR, Retief DH. Variations in enamel etching pattern produced by different concentrations of phosphoric acid. *Journal of Dental Association of South Africa* 1982; 37:185-189.

Dickinson PT, Powers JM. Evaluation of fourteen direct-bonding orthodontic bases. *Am J Orthod Dentofacial Orthop* 1980; 78:630-639.

Douglas JB. Enamel wear caused by ceramic brackets. *Am J Orthod Dentofacial Orthop* 1980; 95:96-98.

Dorminey JC, Dunn WJ, Taloumis LJ. Shear bond strength of orthodontic brackets bonded with a modified 1-step etchant-and-primer technique. *Am J Orthod Dentofacial Orthop* 2003; Oct:124(4): 410-413.

e Cal-Neto JP, Carvalho F, Almeida R, Cristina C, Miguel, JAM. Evaluation of a new self-etching primer on bracket bond strength in vitro. *Angle Orthodontist*, 2006; May:76(3):466-469.

Faltermeier A, Rosentritt M, Faltermeier R, Reicheneder C, Mussig D. Influence of filler level on the bond strength of orthodontic adhesives. *Angle Orthod.* 2007; 77:494–498.

Faust JB, George GN, Fan PL, Powers JM. Penetration coefficient, tensile strength, and bond strength of thirteen direct bonding orthodontic cements. *Am J Orthod Dentofacial Orthop* 1978; 73:512-525.

Fox NA. Fluoride release from orthodontic bonding materials: An in vitro study. *Br J Orthod* 1990; 7:293-298.

Ferguson JW, Read MJ, Watts DC. Bond strengths of an integral bracket-base. *European J Orthod* 1984; 6:267-276.

Forsberg CM, Hagberg C. Shear bond strength of ceramic brackets with chemical and mechanical retention. *British Journal of Orthodontics* 1992; 19:183-189.

Gange P. Bonding in today's orthodontic practice. *J Clin Orthod* 2006; 40(6):361.

Geln JF. Composition and properties of unfilled and composite resin restorative materials. In: Smith DC, Williams DF. *Biocompatibility of dental materials*. Boca Raton 1982; CRC Press:98-130.

Gibbs SL. Clinical performance of ceramic brackets: a survey of British orthodontists' experience. *British Journal of Orthodontics* 1992; 19:191-197.

Gottlieb EW, Retief DH, Jamison HC: An optimal concentration of phosphoric acid as an etching agent. Part I: Tensile bond strength studies. *J Prosthet Dent* 1982; 48:48-51.

Graber TM. *Orthodontics: current principles & techniques*. 4<sup>th</sup> ed. St. Louis, Elsevier Science 2005.

Habibi M, Nik TH, Hooshmand T. Comparison of debonding characteristics of metal and ceramic orthodontic brackets to enamel: an in-vitro study. *Am J Orthod Dentofacial Orthop* 2007; 132:675-679.

Hammad SM, El Banna MS, Elsaka SE. Twelve-month bracket failure rate with amorphous calcium phosphate bonding system. *Eur J Orthod* 2012; doi:10.1093/ejo/cjs050.

Hanson GH, Gibbon WM, Shimizu H. Bonding bases coated with porous metal powder: a comparison with foil mesh. *Am J Orthod* 1983; 83:1-4.

Harris AMP, Joseph VP, Rossouw PE. Comparison of shear bond strengths orthodontic resins to ceramic and metal brackets. *J Clin Orthod*. 1990; 24:725-728.

Hatibovic-Kofman S, Koch G. Fluoride release from glass ionomer cements in vivo and in vitro. *Swed Dent J*. 1991; 142:41-47.

Ireland AJ, Knight H, Sherriff M. An in vivo investigation into bond failure rates with a new self-etching primer system. *Am J Orthod Dentofacial Orthop* 2003; Sep:124(3):323-326.

Jonke E, Franz A, Freudenthaler J, König F, Bantleon HP, Schedle A. Cytotoxicity and shear bond strength of four orthodontic adhesive systems. *European Journal of Orthodontics* 2008; 30:495-502.

Joseph VP, Rossouw PE. The shear bond strengths of stainless steel and ceramic brackets used with chemically and light-activated composite resins. *Am J Orthod Dentofacial Orthop* 1990; 97:121-125.

- Katona TR. Stresses developed during clinical debonding of stainless steel orthodontic brackets. *Angle Orthod* 1997; 67(1):39-46.
- Knoll M, Gwinnett AJ, Wolff MS. Shear strength of brackets bonded to anterior and posterior teeth. *Am J Orthod Dentofacial Orthop* 1986; Jun:89(6):476-9.
- Knox J, Hubsch P, Jones ML, Middleton J. The influence of bracket base design on the strength of the bracket-cement interface. *J Orthod* 2000; Sep:27(3):249-54.
- Knox J, Kralj B, Hübsch PF, Middleton J, Jones ML. An evaluation of the influence of orthodontic adhesive on the stresses generated in a bonded bracket finite element model. *Am J Orthod Dentofacial Orthop* 2001; Jan:119(1):43-53.
- Larmour CJ, Stirrups DR. An ex vivo assessment of a bonding technique using a self-etching primer. *Journal of Orthodontics* 2003; 30:225-228.
- Lombardi I, Ferro R. Shear, Torsional and Tensile Bond strengths of various bracket base designs (PhD Thesis, University of Naples). *Tweed Profile* 2007; 6:25-38.
- Lopez JL. Retention shear strengths of various bonding attachment bases. *Am J Orthod* 1980; 77:669-678.
- Machen DE. Legal aspect of orthodontic practice: risk management concepts, ceramic brackets update. *Am J Orthod Dentofacial Orthop* 1990; 98:185-186.
- MacColl G. The Relationship between bond strength and base surface area using conventional and micro-etched foil-mesh bases. Diploma Thesis. Faculty of Dentistry, University of Toronto, Canada 1995.
- Mahal RS. A standardized approach to determine the effect of thermocycling and long-term storage on the shear bond strength of orthodontic brackets cemented to bovine enamel. Masters Thesis. Faculty of Dentistry, University of Toronto, Canada 2000.
- Maijer R, Smith DC. Variables influencing the bond strength of metal orthodontic bracket bases. *Am J Orthod Dentofacial Orthop* 1981; Jan:79(1):20-34.
- Mandall NA, Hickman J, Macfarlane TV, Mattick RCR, Millett DT, Worthington HV. The Cochrane Collaboration. Published Online: January 21, 2009.
- Marcusson A, Norvall L-I, Persson M. White spot reduction when using glass ionomer cement for bonding in orthodontics: A longitudinal and comparative study. *European Journal of Orthodontics* 1997; 19:233-242.
- McClellan JW. Dentine bonding agents versus glass ionomer cements. *Quintessence International* 1996; 27:659-667.
- McClellan JW, Nicholson JW, Wilson AD. Proposed nomenclature for glass ionomer cements and related materials. *Quintessence International* 1994; 25:587-589.

Millet DT, McCabe JF. Orthodontic bonding with glass ionomer cement- a review. *European Journal of Orthodontics* 1996; 18:385-399.

Millett DT, Nunn JH, Welbury RR, Gordon PH. Decalcification in relation to brackets bonded with glass ionomer cements or a resin adhesive. *The Angle Orthodontist* 1999; 69:65-70.

Montasser M, Drummond J. Reliability of the adhesive remnant index score system with different magnifications. *Angle Orthodontist* 2009; 79(4):773-776.

Newman GV. Epoxy adhesives for orthodontic attachments: progress report. *Am J Orthod Dentofacial Orthop* 1965; 51(12):901-912.

ODP Website. Available at: "<http://www.odpinc.com/page.php?s=products&c=metal>". Accessed Aug. 2, 2012.

Odegaard J. Debonding ceramic brackets. *J Clin Orthod* 1989; 23:632-635.

Omana HM, Moore RN, Bagby MD. Frictional properties of metal and ceramic brackets. *Journal of Clinical Orthodontics* 1992; 26:425-432.

Osario R, Toledano MD, Garcia-Godoy F. Bracket bonding with 15 or 60-second etching and adhesive remaining on enamel after debonding. *The Angle Orthodontist* 1999; 69:45-48.

Phillips HW. *Science of Dental Materials* (ed 8). Philadelphia, PA: Saunders; 1982:45.

Phillips HW. R.W. Skinner's *Science of Dental Materials* (ed 9). W.B. Saunders Company Publishing; 1991.

Proffit WR, Fields HW, Nixon WL. Occlusal forces in normal- and long-face adults. *J Dent Res* 1983; 62(5):566-70.

Pus MD, Way DC. Enamel loss due to orthodontic bonding with filled and unfilled resin using various clean-up techniques. *Am J Orthod Dentofacial Orthop* 1980; 77:269-283.

Regan D, van Noort R. Bond strengths of two integral bracket-base combinations: an in vitro comparison with foil-mesh. *Eur J Orthod* 1989; 11(2):144-53.

Retief DH. The mechanical bond. *International Dental Journal* 1974; 28:18-27.

Reynolds IR. A review of direct orthodontic bonding. *Br J Orthod*. 1975; 2:171-178.

Reynolds IR, von Fraunhofer JA. Direct bonding in orthodontics: a comparison of attachments. *British Journal of Orthodontics* 1977; 4:65-69.

Richardson EM. Master of Philosophy e-thesis. University of Birmingham Research Archive 2010:1-136.

Russell JS. Aesthetic Orthodontic Brackets. *Journal of Orthodontics* 2005; 32:146-163.

Sadowsky PL, Retief DH, Cox PR, Hernandez-Orsini R, Rape WG, Bradley EL. Effects of etchant concentration and duration on the retention of orthodontic brackets: an in vivo study. *Am J Orthod Dentofacial Orthop* 1990; 98:417-421.

Sargison A, McCabe JF, Gordon P. An ex-vivo study of self-, light-, and dual-cured composites for orthodontic bonding. *British Journal of Orthodontics* 1995; 22:319-323.

Sellke TA. What's Really New in Orthodontics. Oct, 1999. The Orthodontic CYBERjournal Available at: "<http://orthocj.com/1999/10/whats-really-new-in-orthodontics/>" Accessed Feb. 1, 2012.

Sharma-Sayal SK, Rossouw PE, Kulkarni GV, Titley KC. The influence of orthodontic bracket base design on shear bond strength. *Am J Orthod Dentofacial Orthop* 2003; Jul:124(1):74-82.

Shen C, Grimaudo N. Effect of hydration on the biaxial flexural strength of glass ionomer cement. *Dent Mater* 1994; 10:190-195.

Sheykholeslam Z, Brandt S. Some factors affecting the bonding of orthodontic attachments to tooth surface. *Journal of Clinical Orthodontics* 1977; 11:734-743.

Silverstone LM. Fissure sealants: Laboratory studies. *Caries Res* 1974; 8:2-26.

Simoka LV, Powers JM. In vitro bond strength of treated direct-bonding metal bases. *Am J Orthod Dentofacial Orthop* 1985; 88:133-136.

Sinha PK, Rohrer MD, Nanda RS, Brickman CD. Interlayer formation and its effects on debonding polycrystalline ceramic orthodontic brackets. *Am J Orthod Dentofacial Orthop* 1995; 108:455-463.

Smith, D.C. A New Dental Cement, *British Dental Journal* 1968; 125:381-384.

Smith NR, Reynolds IR. A comparison of three bracket bases: an in vitro study. *Br J Orthod* 1991; 18:29-35.

Smith DC, Williams DF. Biocompatibility of dental materials. Volume II, Boca Raton, Fla: CRC Press Inc. 1982; 51-76.

Steiner CC. Is there one best orthodontic appliance? *Angle Orthod* 1933; 3:277–298.

Storm ER. Debonding ceramic brackets. *J Clin Orthod* 1990; 24:91-94.

Swartz ML,Ormco Corporation. A technical bulletin on the issue of bonding and debonding ceramic brackets 1988; 070-5039.

Tavas MA, Watts DC. Bonding of orthodontic brackets by trans-illumination of a light activated composite: an in-vitro study. *British Journal of Orthodontics* 1979; 6:207-208.

Ten Cate AR. *Oral histology: Development, structure and function*. Vol. 4. Mosby; St. Louis: 1994.

Thanos CE, Munholland T, Caputo AA. Adhesion of mesh-base direct-bonding brackets. *Am J Orthod Dentofacial Orthop* 1979; 75:421-430.

Urabe H, Rossouw PE, Titley KC, Yamin C. Combinations of etchants, composite resins, and bracket systems: an important choice in orthodontic bonding procedures. *Angle Orthod*. 1999; 69(3):267-75.

van Waes H, Matter T, Krejci I. Three-dimensional measurement of enamel loss caused by bonding and debonding of orthodontic brackets. *Am J Orthod Dentofacial Orthop* 1997; 112:666.

Velo S, Carano A, Carano A. Self-etching vs. traditional bonding systems in orthodontics: an in vitro study. *Orthodontics & Craniofacial Research* 2002; Aug;5(3):166-169.

Vilchis RJS, Yasuaki H, Kohji Y. Examination of Six Orthodontic Adhesives with Electron Microscopy, Hardness Tester and Energy Dispersive X-ray Microanalyzer. *Angle Orthodontist* 2008; 78(4):655-661.

Waller DE. Orthodontic bracket assembly and method for attachment. United States Patent 1974; #4063360.

Wang WN, Li CH, Chou TH, Wang DD, Lin LH, Lin CT. Bond strength of various bracket base designs. *Am J Orthod Dentofacial Orthop* 2004; 125(1):65-70.

Wang WN, Meng CL. A study of bond strength between light and self-cured orthodontic resin. *Am J Orthod Dentofacial Orthop* 1992; 101:350-354.

Wilson AND, Nicholson JW. Polyalkenoate Cements. In: West AR, Baxter H (editors) *Acid-Based Cements: Their Biomedical and industrial applications*. Chemistry of solid state material, Cambridge University Press. 1993;3.

Willems G, Carels CEL, Verbeke G. In vitro peel/shear bond strength evaluation of orthodontic bracket base design. *Journal of Dentistry* 1997; 25:271-278.

Whitlock BO, Eick JD, Ackerman RJ Glaros AG, Chappell RP. Shear strength of ceramic brackets bonded to porcelain. *Am J Orthod Dentofacial Orthop* 1994; 106:358-364.

Yamada R, Hayakawa T, Kasai K. Effect of using self-etching primer for bonding orthodontic brackets. *Angle Orthodontist* 2002; 72(6):558-564.