

UNCLASSIFIED

AD NUMBER
AD848643
NEW LIMITATION CHANGE
TO Approved for public release, distribution unlimited
FROM Distribution authorized to U.S. Gov't. agencies and their contractors; Critical Technology; JAN 1969. Other requests shall be referred to Department of the Army, Fort Detrick, Attn: Technical Release Branch/TID, Frederick, MD 21701.
AUTHORITY
BDRL, D/A ltr, 29 Sep 1971

THIS PAGE IS UNCLASSIFIED

AD

AD848643

TECHNICAL MANUSCRIPT 512

PESTICINOGENY: AN IDENTIFYING  
CHARACTERISTIC OF PASTEURELLA PESTIS

Earl D. Beesley  
Michael J. Surgalla

JANUARY 1969

STATEMENT #2 UNCLASSIFIED

This document is subject to special export controls and each transmittal to foreign governments or foreign nationals may be made only with prior approval of Dept. of Army, Fort Detrick, ATTN: Technical Release Branch/TID, Frederick, Maryland 21701

DEPARTMENT OF THE ARMY  
Fort Detrick  
Frederick, Maryland

DDC  
RECEIVED  
MAR 7 1969  
C

12

**Best  
Available  
Copy**

Reproduction of this publication in whole or in part is prohibited except with permission of the Commanding Officer, Fort Detrick, ATTN: Technical Releases Branch, Technical Information Division, Fort Detrick, Frederick, Maryland, 21701. However, DDC is authorized to reproduce the publication for United States Government purposes.

#### DDC AVAILABILITY NOTICES

Qualified requesters may obtain copies of this publication from DDC.

Foreign announcement and dissemination of this publication by DDC is not authorized.

Release or announcement to the public is not authorized.

#### DISPOSITION INSTRUCTIONS

Destroy this publication when it is no longer needed. Do not return it to the originator.

The findings in this publication are not to be construed as an official Department of the Army position, unless so designated by other authorized documents.

ADDITIONAL FOR		
WPSI	WHITE SECTION	<input type="checkbox"/>
DDO	DIFF SECTION	<input checked="" type="checkbox"/>
REANNOUNCED		<input type="checkbox"/>
JUSTIFICATION		
BY		
DATE: SECTION/AVAILABILITY CODES		
DIST.	AVAIL.	SPECIAL
2		

DEPARTMENT OF THE ARMY  
Fort Detrick  
Frederick, Maryland 21701

TECHNICAL MANUSCRIPT 512

PESTICINOGENY: AN IDENTIFYING CHARACTERISTIC  
OF PASTEURELLA PESTIS

Earl D. Beasley  
Michael J. Surgalla

Medical Investigation Division  
MEDICAL SCIENCES LABORATORIES

Project 1B562602A059

January 1969

**ABSTRACT**

Current methods of identifying Pasteurella pestis rely heavily on tests specific for detecting fraction I, the envelope antigen. Pestiein I, a bacteriocin inhibitory for Pasteurella pseudo-tuberculosis, has been demonstrated in nearly all strains isolated from human infections. The results of use of this characteristic as an identifying trait for P. pestis were compared with results reported for detecting fraction I by fluorescent antibody and antiserum agar techniques. Data indicate that although certain atypical strains of P. pestis fail to react in one system or the other, a combination of these tests provides positive identification in all cases. The rapidity, simplicity, and specificity of this test makes it a valuable tool in the study of plague infections and an important adjunct to methods currently in use.

## I. INTRODUCTION\*

The identification of Pasteurella pestis, until recently, has been a time-consuming problem. Confirmation of the identity of the infecting organisms by accepted morphological, biochemical, antigenic, and animal infectivity studies requires approximately 2 weeks. However, with the development<sup>1</sup> of fluorescent antibody specific for Fraction I, the envelope antigen of P. pestis, it has become possible to provide a presumptive diagnosis of plague within a matter of hours. Since many hospitals are not equipped to perform fluorescent antibody examination of specimens for the presence of P. pestis, it seems important that alternative procedures should be available to provide the clinical microbiologist a tool for rapid plague detection. One such highly specific method has been described<sup>2</sup> that uses a nutrient medium containing antiserum specific for Fraction I. This report discusses the application of the pesticin assay<sup>3</sup> for detection of pesticin I in rapid presumptive identification of P. pestis.

## II. MATERIALS AND METHODS

Pesticin I is detected by its ability to inhibit growth of type I Pasteurella pseudotuberculosis, a species closely related to P. pestis. The major requirements for a successful assay are: (i) a minimum level of  $Fe^{++}$  and (ii) an excess of free  $Ca^{++}$ . These conditions are satisfied by including calcium ethylenediaminetetraacetic acid (Ca-EDTA) in the medium. A proven formula for pesticin I assay agar, essentially the same as described by Brubaker and Surgalla<sup>4</sup> consists of 4% blood agar base\*\* in distilled water. After sterilization at 121 C for 15 min, the agar is cooled to 45 to 50 C and sterile  $CaCl_2$ , Ca-EDTA, and glucose are added to give final concentrations of 0.01M, 0.1%, and 0.01M respectively. The base layer is poured, solidified, and allowed to dry at room temperature.

Specimens may then be streaked to insure that developing colonies are well separated. Isolated colonies appear after 24 hours at 26 C and reach a diameter of approximately 1 to 1.5 mm in 48 hours.

---

\* This report should not be used as a literature citation in material to be published in the open literature. Readers interested in referencing the information contained herein should contact the senior author to ascertain when and where it may appear in citable form.

\*\* Baltimore Biological Laboratories.

Each plate is inverted for 1 min over a 2 in<sup>2</sup> gauze pad saturated with chloroform. This sterilizes the surface of the colonies and prevents the cells from mixing with the indicator layer. After excess chloroform is allowed to dissipate, melted pesticin agar is cooled to 45 C and inoculated with type I P. pseudotuberculosis so that each ml contains  $1 \times 10^5$  organisms. Five ml of this suspension is then pipetted evenly over the surface of the suspected colonies. Plates incubated at 37 C may be examined after 18 to 24 hours. Wide, clear zones of inhibition appear around colonies producing pesticin I (Fig. 1).

Moderately contaminated samples may be streaked directly on pesticin assay medium. A more satisfactory method is to dilute the specimen and inoculate the agar with several levels to insure the best possible separation of colonies.

The results of a typical test are shown in Figure 2. The sample, bone marrow from an exhumed body, yielded  $1.5 \times 10^6$  P. pestis per gram of tissue. This was roughly 1% of the total viable organisms recovered.

When pure cultures are available, one plate may be used conveniently to test as many as six unknowns (Fig. 3).

It should be strongly emphasized, however, that positive and negative controls must be included with each test to insure that the system is functioning properly.





FIGURE 1. Clear Zones Around Isolated Colonies of *Pasteurella pestis* Demonstrate Pesticin I Inhibition of *Pasteurella pseudotuberculosis*. Note positive control in center.

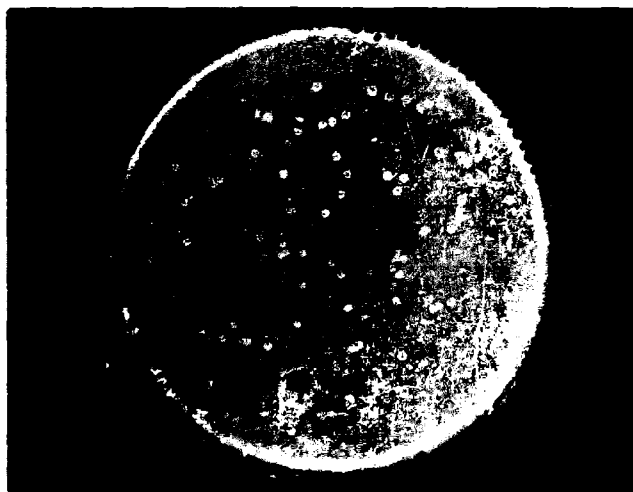
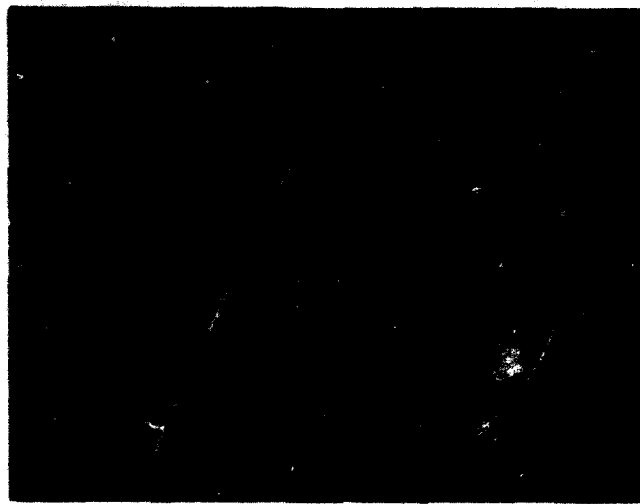


FIGURE 2. Demonstration of the Pesticin I Assay for Detecting *Pasteurella pestis* in Contaminated Specimens.



**FIGURE 3. Pesticin I Assay Used for Testing Several Pure Cultures at One Time. Note positive control in center and negative control at top.**

### III. RESULTS AND DISCUSSION

Pesticin, a bacteriocin-like substance produced by P. pestis, was first described by Ben-Gurion and Hertman.<sup>5</sup> Studies by Brubaker and Surgalla<sup>6</sup> revealed the presence of two bacteriocins, pesticin I and pesticin II. Correlation of pesticin I production with the expression of fibrinolytic activity and coagulase was reported by Brubaker et al.<sup>6</sup> This relationship was further studied by Beesley et al.<sup>7</sup>

The loss of pesticinogeny and the genetically linked fibrinolytic factor and coagulase also reduce the organisms' invasive powers.<sup>8</sup>

This type of organism is apparently quite rare in natural plague infections. The literature covers only two strains isolated from nature that lack this property and yet retain other known virulence factors. One of these was isolated from a flea and is not pertinent here. The other was recovered from a human infection. Strain Dodson, reported by Surgalla and Beesley,\* was isolated from a young boy in Arizona in 1967. The apparent rarity of this type of organism in human and sylvatic plague indicates the high stability of pesticinogeny and supports its value in identifying P. pestis.

The wide variation in the genetic make-up of P. pestis<sup>9</sup> points out the need for new methodology that can be applied at the level of the hospital diagnostic laboratory. Table 1 shows some of the known varieties of the plague organism and indicates two properties that differentiate between P. pestis and P. pseudotuberculosis. Table 2 shows how a combination of testing procedures can decrease the chance of misdiagnosing plague.

TABLE 1. EXPRESSION OF BACTERIAL PROPERTIES BY  
P. PESTIS AND P. PSEUDOTUBERCULOSIS

Strain	Fraction I	Pesticin I
<u>P. pestis</u>		
Alexander	+	+
Dodson	+	-
Bryans	+	+
M23	-	+
<u>P. pseudotuberculosis</u>		
Alaska	-	-
PB1/+	-	-

\* Unpublished data, 1968.

TABLE 2. METHODS FOR IDENTIFYING P. PESTIS

Strain	Fluorescent Antibody	Antiserum Agar	Pesticin I Assay	Phage	Guinea Pig Lethality
<u>P. pestis</u>					
Alexander	+	+	+	+	+
Dodson	+	+	0	+	±
Bryans	0	+	+	+	±
M23	0	0	+	+	±
<u>P. pseudotuberculosis</u>					
Alaska	+	0	0	0	0
FBI/+	0	0	0	0	0

± = Inconsistent.

The use of the pesticin I assay has several important advantages, especially in diagnosis of human infections. First, the method is easy to use, and extensive training is unnecessary. Secondly, there is no requirement for expensive and unusual equipment. The basic materials used in the assay are inexpensive, quite stable, and easily obtained. Suitable avirulent strains of P. pseudotuberculosis also are readily available. Third, unlike testing for phage sensitivity, pure cultures are not necessary if the colonies are sufficiently separated on the initial isolation plate.

We do re-emphasize that the use of the pesticin I assay is not intended to replace other accepted techniques, but rather to supplement them and increase the effectiveness of plague investigation.

# LITERATURE CITED

1. Winter, C.C.; Moody, M.D. 1959. Rapid identification of Pasteurella pestis with fluorescent antibody: II. Specific identification of Pasteurella pestis in dried smears. J. Infect. Dis. 104:281-287.
2. Albizo, J.M.; Surgalla, M.J. 1966. Specific identification of Fraction-I-positive Pasteurella pestis colonies on antiserum-agar plates. J. Appl. Microbiol. 16:649-655.
3. Brubaker, R.R.; Surgalla, M.J. 1961. Pesticins: I. Pesticin-bacterium interrelationships and environmental factors influencing activity. J. Bacteriol. 82:940-949.
4. Brubaker, R.R.; Surgalla, M.J. 1962. Pesticins: II. Production of pesticins I and II. J. Bacteriol. 84:539-545.
5. Ben-Gurion, R.; Hertman, I. 1958. Bacteriocin-like material produced by Pasteurella pestis. J. Gen. Microbiol. 19:289-296.
6. Brubaker, R.R.; Surgalla, M.J.; Beesley, E.D. 1965. Pesticinogeny and bacterial virulence. Zentr. Bakteriell. Parasitenk. Abt. I Orig. 196:302-312.
7. Beesley, E.D.; Brubaker, R.R.; Janasen, W.A.; Surgalla, M.J. 1967. Pesticins: III. Expression of coagulase and mechanisms of fibrinolysis. J. Bacteriol. 94:19-26.
8. Brubaker, R.R.; Beesley, E.D.; Surgalla, M.J. 1965. Pasteurella pestis: Role of pesticin-I and iron in experimental plague. Science 149:422-424.
9. Burrows, T.W. 1963. Virulence of Pasteurella pestis and immunity to plague. Ergeb. Microbiol. Immunitatforsch. Exp. Therap. 37:59-113.

Unclassified  
Security Classification

13

DOCUMENT CONTROL DATA - R & D																		
<small>(Security classification of title, body of abstract and indexing annotation must be entered when the overall report is classified)</small>																		
1. ORIGINATING ACTIVITY (Corporate author)		2a. REPORT SECURITY CLASSIFICATION																
Department of the Army Fort Detrick, Frederick, Maryland 21701		Unclassified																
2. REPORT TITLE		2b. GROUP																
PESTICINOGENY: AN IDENTIFYING CHARACTERISTIC OF <u>PASTEURELLA PESTIS</u>																		
3. DESCRIPTIVE NOTES (Type of report and inclusive dates)																		
4. AUTHOR(S) (First name, middle initial, last name)																		
Earl D. Beesley Michael J. Surgalla																		
5. REPORT DATE	7a. TOTAL NO. OF PAGES	7b. NO. OF REFS																
January 1969	13	9																
6a. CONTRACT OR GRANT NO.		6b. ORIGINATOR'S REPORT NUMBER(S)																
A. PROJECT NO. 1B562602A059		Technical Manuscript 512																
c.		8b. OTHER REPORT NO(S) (Any other numbers that may be assigned this report)																
d.																		
10. DISTRIBUTION STATEMENT																		
Qualified requesters may obtain copies of this publication from DDC. Foreign announcement and dissemination of this publication by DDC is not authorized. Release or announcement to the public is not authorized.																		
11. SUPPLEMENTARY NOTES		12. SPONSORING MILITARY ACTIVITY																
		Department of the Army Fort Detrick, Frederick, Maryland, 21701																
13. ABSTRACT																		
<p>Current methods of identifying <u>Pasteurella pestis</u> rely heavily on tests specific for detecting fraction I, the envelope antigen. Pesticin I, a bacteriocin inhibitory for <u>Pasteurella pseudotuberculosis</u>, has been demonstrated in nearly all strains isolated from human infections. The results of use of this characteristic as an identifying trait for <u>P. pestis</u> were compared with results reported for detecting fraction I by fluorescent antibody and antiserum agar techniques. Data indicate that although certain atypical strains of <u>P. pestis</u> fail to react in one system or the other, a combination of these tests provides positive identification in all cases. The rapidity, simplicity, and specificity of this test makes it a valuable tool in the study of plague infections and an important adjunct to methods currently in use. ( ) ←</p>																		
14. Key Words																		
<table><tbody><tr><td>*<u>Pasteurella pestis</u></td><td>Fluorescent antibody</td></tr><tr><td>*Pesticins</td><td>Antiserums</td></tr><tr><td>*Identification</td><td>Plague</td></tr><tr><td><u>Pasteurella pseudotuberculosis</u></td><td>Infectious diseases</td></tr><tr><td>Detection</td><td></td></tr><tr><td>Antigens</td><td></td></tr><tr><td>Bacteriocins</td><td></td></tr><tr><td>Inhibitors</td><td></td></tr></tbody></table>			* <u>Pasteurella pestis</u>	Fluorescent antibody	*Pesticins	Antiserums	*Identification	Plague	<u>Pasteurella pseudotuberculosis</u>	Infectious diseases	Detection		Antigens		Bacteriocins		Inhibitors	
* <u>Pasteurella pestis</u>	Fluorescent antibody																	
*Pesticins	Antiserums																	
*Identification	Plague																	
<u>Pasteurella pseudotuberculosis</u>	Infectious diseases																	
Detection																		
Antigens																		
Bacteriocins																		
Inhibitors																		

DD FORM 1473

REPLACES DD FORM 1473, 1 JAN 64, WHICH IS OBSOLETE FOR ARMY USE.

Unclassified  
Security Classification