

AD-734 357

RIA-76-U102

AD-734357

AD

**THE DEVELOPMENT OF FILLER METAL ALLOYS
FOR VACUUM BRAZING-GAS QUENCHING
OF ALUMINUM ALLOYS**

FINAL REPORT

by

**William J. Werner
Gerry M. Slaughter**

November 1971

**TECHNICAL
LIBRARY**



**DEPARTMENT OF THE ARMY
EDGEWOOD ARSENAL
Technical Support Directorate
Industrial Operations Division
Edgewood Arsenal, Maryland 21010**

DELIVERY ORDER NO. DAAA15-69-F-4895

**U.S. ATOMIC ENERGY COMMISSION
OAK RIDGE NATIONAL LABORATORY**

Operated by

**UNION CARBIDE CORPORATION, NUCLEAR DIVISION
Post Office Box X
Oak Ridge, Tennessee 37830**

USADACS Technical Library



5 0712 01014407 8

Distribution Statement

Approved for public release; distribution unlimited.

Disclaimer

The findings in this report are not to be construed as an official Department of the Army position unless so designated by other authorized documents.

Disposition

Destroy this report when no longer needed. Do not return it to the originator.

THE DEVELOPMENT OF FILLER METAL ALLOYS FOR VACUUM
BRAZING-GAS QUENCHING OF ALUMINUM ALLOYS

FINAL REPORT

by

William J. Werner
Gerry M. Slaughter

November 1971

Approved for public release; distribution unlimited.

DEPARTMENT OF THE ARMY
EDGEWOOD ARSENAL
Technical Support Directorate
Industrial Operations Division
Edgewood Arsenal, Maryland 21010

Delivery Order No. DAAA15-69-F-4895

U.S. ATOMIC ENERGY COMMISSION
OAK RIDGE NATIONAL LABORATORY
Operated by
UNION CARBIDE CORPORATION, NUCLEAR DIVISION
Post Office Box X
Oak Ridge, Tennessee 37830

FOREWORD

The work described in this report was authorized under PEMA 4930.10.51129 (5671129), Vacuum Brazing-Gas Quenching of Chemical and Related Munitions. The program was started in April 1969 and concluded in December 1970.

Reproduction of this document in whole or in part is prohibited except with permission of Commanding Officer, Edgewood Arsenal, ATTN: SMUEA-TSIO, Edgewood Arsenal, Maryland 21010; however, DDC and the National Technical Information Service are authorized to reproduce this document.

Acknowledgements

The authors wish to express their appreciation to all of the personnel of the Metals and Ceramic Division, Oak Ridge National Laboratory, who were instrumental in carrying out the work of this program. My special appreciation to Mr. James Wier, Oak Ridge National Laboratory, and Mr. Louis Garono, P.E., Chief Engineer, Edgewood Arsenal, Maryland. The work was sponsored by PEMA, Manufacturing Methods and Technology Programs and monitored by the Contract Project Officer, Edgewood Arsenal, Maryland.

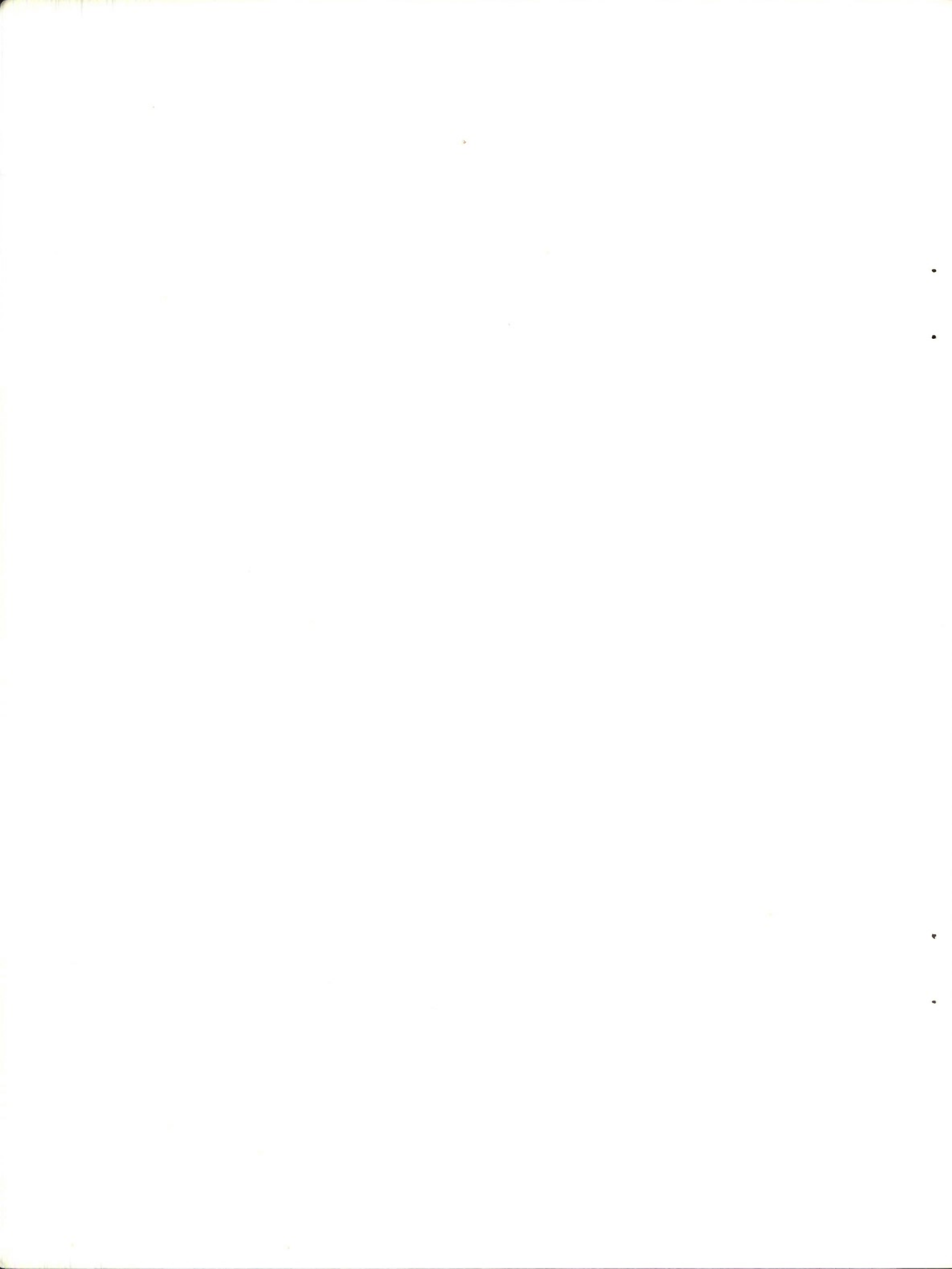
DIGEST

During the course of this program, we developed several aluminum-silicon base brazing filler metal compositions that appear to exhibit significant improvements over existing commercial compositions. They braze in vacuum at temperatures lower than the flow temperatures of commercial brazing alloys, and have equal or better flowability. Our lowest flow temperature for these alloys – 1020°F – is about 50°F lower than the generally accepted flow temperature of the Alcoa No. 718 (88 Al-12 Si, wt%) commercial alloy. All of these compositions flowed on aluminum alloy 6061 in vacuum without the use of flux. The Al-Si-In alloys exhibited flow temperatures in the range 1075° to 1095°F, and the Al-Si-Y alloys exhibited flow temperatures in the range 1095° to 1140°F. Alloys in the Al-Si-Ge system were particularly promising and exhibited flow temperatures of 1020° to 1095°F. Of particular interest in this system are the 55 Al-5 Si-40 Ge, 45 Al-5 Si-50 Ge, and 35 Al-5 Si-60 Ge (wt%) alloys all of which flowed at 1020°F; these flow temperatures are approximately 50°F below those of commercial alloys.

It should be emphasized at this point that we feel that the full potential of these alloys is yet to be realized. That is, further work is necessary to show that the optimum compositions in these systems have been found. Secondly, further minor additions of other elements such as Cu, Zn, Sn, etc., should be investigated since they may result in further flow temperature reductions and/or wettability-flowability improvements. Also, optimum time-temperature relationships for vacuum brazing with these alloys must be established.

The silver-bearing ternary and quaternary experimental brazing filler metals were also formulated, melted, and tested on 6061 base metal for wetting and flow properties. It should be emphasized that the Ag-Al-Ge ternary alloy (alloy No. 5, 37.9 Ag-15.9 Al-46.2 Ge, wt%) had a flow temperature of approximately 930°F. This is a significant break-through in aluminum brazing filler metal research since 930°F is in the right range for brazing the base metals 7075 and 2024. From the standpoint of braze metal-base metal interaction and flow, alloy No. 1 (61.5 Ag-25.7 Al-12.8 In, wt%) which brazed at 1075°F also looks very attractive.

Earlier in the program we found that magnesium-bearing experimental brazing alloys could not be melted using conventional arc-melting techniques. Later, we successfully developed techniques for preparing 10-gram buttons of several magnesium-bearing alloys. Pad tests using the lowest melting binary alloys were run at 930°F on 6061 pads. Flow of the experimental alloys was obtained in all three cases and the results were also very promising.



CONTENTS

	<u>Page</u>
I. INTRODUCTION	7
II. LITERATURE SURVEY	7
III. EQUIPMENT AND EXPERIMENTAL PROCEDURES	9
IV. FORMULATIONS OF EXPERIMENTAL BRAZING FILLER METAL COMPOSITIONS	14
A. Aluminum-Silicon-Indium System	14
B. Aluminum-Silicon-Germanium System	25
C. Aluminum-Silicon-Yttrium System	27
D. Silver-Bearing Alloys	27
E. Magnesium-Bearing Alloys	38
F. Additional Alloys Formulated and Melted in Al-Si-In and Al-Si-Ge Systems	42
V. SUMMARY AND CONCLUSION	42
APPENDIX	45
DISTRIBUTION LIST	51

LIST OF TABLES

Table

I	Nominal Compositions, Limits, and Melting Ranges of Alloys Under Consideration	10
II	List of Potentially Compatible Elements for Brazing Filler Metal Alloy Formulation Supplied by Edgewood Arsenal	15
III	Flow Temperatures and Compositions of the Al-Si-In Alloys	21
IV	Flow Temperatures and Compositions of the Al-Si-Ge Alloys	25
V	Flow Temperatures and Compositions of the Al-Si-Y Alloys	34
VI	Composition and Flow Temperatures of Silver-Bearing Experimental Brazing Alloys	37
VII	Compositions of Magnesium-Bearing Eutectic Alloys and Their Respective Eutectic Temperatures	38
VIII	Compositions (wt%) of Additional Alloys Formulated and Melted in the Al-Si-In and Al-Si-Ge Systems	43

LIST OF FIGURES

Figure

1	(Y-95339) Apparatus for Determining Flow Temperatures and Wettability of Experimental Brazing Filler Metals	11
---	---	----

LIST OF FIGURES (Contd)

<u>Figure</u>		<u>Page</u>
2	Time-temperature Response for Experimental Brazing Furnace	13
3	Ternary Plot of the Al-Si-In System with Attached Binary Phase Diagrams for the Estimation of Compositions of Potential Interest to the Program	17
4	Ternary Plot of the Al-Si-Ge System with Attached Binary Phase Diagram for the Estimation of Composition of Potential Interest to the Program	18
5	Ternary Plot of the Al-Si-Y System with Attached Binary Phase Diagrams for the Estimation of Compositions of Potential Interest to the Program	19
6	ORNL-DWG-64-4538 Schematic of Apparatus Used for Casting the Experimental Brazing Filler Metals	20
7	Y-99725 Macro of Pad Test with Al-Si-In Alloy No. 8	22
8	Y-99726 Micro of Interface Between 6061 Base Metal and No. 8 Al-Si-In Alloy 250X	23
9	Y-97261 Macro of Pad Test on Al-Si-In Alloy No. 6	24
10	Y-97263 T-Joint Brazed with Al-Si-In Alloy No. 6 at 1085°F for 5 min	26
11	Y-97406 Wetting Tests on Al-Si-Ge No. 9 Made at Successively Higher Temperatures Proceeding From the Left	28
12	Y-97407 T-Joint of Al-Si-Ge Alloy No. 9 and 6061 Base Metal	29
13	Y-99740 Macro of Pad Test on Al-Si-Ge Alloy No. 5 Vacuum Brazed 7 min at 1022°F	30
14	Y-99741 Micro of Interface Between 6061 Base Metal and No. 5 Al-Si-Ge Alloy 250X	31
15	Y-99742 Macro of Pad Test on Al-Si-Ge Alloy No. 8 Vacuum Brazed 7 min at 1095°F	32
16	Y-99743 Micro of Interface Between 6061 Base Metal and No. 8 Al-Si-Ge Alloy 250X	33
17	Y-98540 Photo of 1/16-in. Wire Produced by Swaging of Al-Si-Y Alloy No. 18 from a Casting	35
18	(Y-97404) Silver-Aluminum Phase Diagram	36
19	Low (27X) and Higher (150X) Magnification Photographs of the 1075°F Test of the 61.5 Ag-25.7 Al-12.8 In (wt%) Filler Metal on Aluminum Alloy 6061	39
20	Section of the 930°F Pad Test of the 37.9 Ag-15.9 Al-46.2 Ge (wt%) Alloy on Aluminum Alloy 6061	40
21	Section of the 1110°F Pad Test of the 34.1 Ag-14.3 Al-41.6 Ge-10 Y (wt%) Alloy on Aluminum Alloy 6061	41

THE DEVELOPMENT OF FILLER METAL ALLOYS FOR VACUUM BRAZING-GAS QUENCHING OF ALUMINUM ALLOYS

W. J. Werner and G. M. Slaughter
Metals and Ceramics Division
Oak Ridge National Laboratory*
Oak Ridge, Tennessee 37830

and

F. B. Gurtner
Edgewood Arsenal
Edgewood, Maryland 21010

I. INTRODUCTION.

The main objective of this investigation was to develop new brazing filler metals for aluminum alloys, especially of the type that would function in a vacuum and have potential corrosion capability for the mission at Edgewood Arsenal. Previous corrosion studies conducted by Edgewood Arsenal showed that some elements alloyed alone with aluminum were subject to corrosion at a rapid rate.

Three flow temperatures were picked as the most advantageous range for the Army's final use: 950°, 1000°, and 1050°F. The temperature range would provide brazing capability for the high strength aluminum alloys.

II. LITERATURE SURVEY.

The investigation was begun with a survey of the literature. Unfortunately, there is very little published work on fluxless-vacuum and/or inert gas brazing of aluminum. Most of the fluxless brazing work which has been reported was done with the commercial brazing alloy No. 718 (88 wt% Al, 12 wt% Si), using aluminum alloys 2002, 3003, 6061, and 2219 base metals. Also, much of the "fluxless" brazing research was actually performed using a small amount of flux. M. M. Schwartz,¹ et al showed the feasibility of vacuum fluxless brazing production quantities of aluminum alloy 6061 containers of helium leaktight quality by closely controlling process parameters using a commercial brazing filler metal. Brazing alloy No. 718 (nominally 88 wt% Al, 12 wt% Si) was used. This alloy is widely used commercially for both dip and furnace brazing and is available in wire and foil forms. Prime importance was placed on metal preparation and cleanliness, which was not surprising. As might be expected, the success of the endeavor was largely due to the use of laboratory cleanliness levels under production conditions. The maximum allowable lag between cleaning and brazing was 12 hr.

Only one other report of equivalent content was found. C. S. Beuyukian² developed techniques for vacuum or inert gas fluxless brazing of aluminum cold plates for use in Apollo

* Operated by the U. S. Atomic Energy Commission under contract with the Union Carbide Corporation.

¹ Schwartz, M. M., Gurtner, F. B., and Shutt, Jr., P. K. Vacuum (or Fluxless) Brazing-Gas Quenching of 6061 Aluminum Alloy. *Welding J. (N. Y.)* 46(5), 423-431 (May 1967).

² Beuyukian, C. S. Fluxless Brazing of Apollo Cold Plates - Development and Production. *Welding J. (N. Y.)* 47(9), 710-719 (September 1968).

Command Modules. In this work brazing filler metal No. 718 and No. 23 brazing sheet were evaluated. As previously stated, alloy No. 718 is nominally 88 wt% Al, 12 wt% Si; No. 23 brazing sheet is comprised of 6951 base alloy clad on one side with 4045 brazing filler metal – nominally 90 wt% Al, 10 wt% Si. Base metals 6061 and 5052 were considered for the main body of the assembly.

In general, better results were obtained using vacuum. The techniques developed are unique in that stringent flatness requirements placed on the assembly by design required that brazing operations be performed in heated platen presses at moderate pressures. The use of pressure during brazing undoubtedly influenced oxide penetration and/or displacement during the brazing operation, thus attaining wetting and flow. Production brazing was carried out in the temperature range 1055° to 1095° F using brazing times of at least 10 min.

Under these conditions, aluminum alloy 6061 was preferred over 5052 because alloy 5052 exhibited a greater susceptibility to intergranular penetration by silicon. Use of alloy 5052 would, therefore, have required more rigid time-temperature control during the brazing cycle. In addition, silicon diffusion resulted in embrittlement of 5052.

No. 23 brazing sheet was chosen for production over the combination of brazing alloy No. 718-6061 for both metallurgical and process advantages. As a single entity it was immediately more desirable from cleaning, assembly, and material handling standpoints. Metallurgically, the 4045 brazing filler metal with its lower silicon content, allowed greater latitude in processing parameters than did alloy No. 718.

Finally, the workers at Aeronca, Inc., a major manufacturer of aerospace structures, completed a study on inert gas brazing of aluminum in early 1967.³ Their work was concerned with development of high-strength brazed aluminum honeycomb structures which would withstand a range of cryogenic (-423°F) through elevated (600°F) temperatures. The base metals involved in the study were X7005, X7106, and 7039, all of which began to melt within the range 1080° to 1120°F. As a result, a 1050°F maximum flow temperature for the brazing filler metal was needed.

Three commercial brazing alloys were evaluated in combination with the aforementioned base metals – Nos. 716, 718, and 719. No. 716 contains nominally 86 wt% Al, 10% Si, and 4% Cu; 718 contains nominally 88% Al, 12% Si; and 719 contains nominally 76% Al, 10% Si, 10% Zn, and 4% Cu. It was found that the aluminum-silicon brazing alloys performed best as claddings.

The researchers developed several new brazing alloys during the course of their investigation. Two, in particular, showed promise. Both alloys had a base composition of 68% Al, 7% Si, 15% Ge; their compositions were modified with 10% Zn, and 10% Ag, respectively. Both alloys brazed at 1020°F. These new alloys looked especially good in combination with X7106. Alloy 719 remained the number one choice for brazing X7005.

The base metals of interest in the present study were 6061, 2219, 7075, and 2024. Joining of alloys 6061 and 2219 is accomplished industrially by dip or furnace brazing techniques both of which employ liberal amounts of flux. In addition, alloy 6061 has also been brazed without flux using vacuum and/or inert atmospheres.^{1,2} As a result, good cleaning and handling procedures

³ Fluxless Brazing Makes Headway. *Iron Age* 200, 67-68 (August 10, 1967).

are not problems with these two alloys. In fact, cleaning procedures are available in the Metals and Ceramics Division of Oak Ridge National Laboratory for both of these alloys since they are routinely hot roll-bonded into dispersion-type fuel plates using standard picture-frame techniques. Since aluminum alloy 6061 is used as a structural material in a number of applications, we concentrated on the brazing of it in this study. We also made a cursory evaluation of the brazability of aluminum alloys 2219, 2024, and 7075. Although there are basic compositional differences between 2219 and 6061 [6061 nominally contains 0.25 Cu, 0.6 Si, 1.0 Mg, and 0.25 Cr (wt%) and 2219 nominally contains 6.3 Cu and 0.3 Mn (wt%)], our research indicated that they would braze similarly. The same cleaning procedures could be used and the melting ranges for the two base metals were about the same. Pad tests for wettability showed that experimental brazing filler metals which wet 6061 would also wet 2219.

Aluminum alloys 2024 and 7075, on the other hand, are not considered commercially brazable using established commercial techniques and commercial brazing filler alloys. Both alloys contain relatively high amounts of magnesium (1.5 and 2.5 wt%, respectively). Normally, alloys with magnesium contents greater than 2.0% are considered difficult to braze industrially; and alloys with magnesium contents greater than 2.5% are considered unbrazable. This is due to the fact that state-of-the-art fluxes do not remove the tenacious oxides formed on these alloys. Perhaps even more important, their melting ranges are considerably lower than those of 6061 and 2219 (table 1). We immediately found that these alloys are not amenable to the chemical cleaning procedure found adequate for 6061 and 2219. Our metallographic group found that these alloys could be electropolished, even though they are not readily cleaned by chemical means. Both alloys responded satisfactorily to a low-temperature perchloric acid electropolishing treatment.

Our initial studies consisted of the determination of the upper brazing temperature limit for these base metals. Using our normal 6061 brazing cycle of about 30 min (total time in brazing furnace), we found that 7075 could not be exposed to temperatures above 1000°F, and 2024 could not be exposed to temperatures above 1080°F. In the temperature range 1020°F to 1150°F (for our particular thermal cycle), localized incipient melting occurred in alloy 7075. At 1180°F, the alloy was completely molten. Alloy 2024 sagged in the temperature range 1100°F to 1150°F and was also completely molten at 1180°F. These experiments indicate that the maximum brazing temperatures of aluminum alloys 7075 and 2024 are 1000 and 1080°F, respectively. The solidus temperatures of these alloys are reported as 900°F and 930°F.⁴ It is envisioned that one would ideally prefer to braze these alloys below the solidus where alloying and/or reaction rates would be considerably slower.

III. EQUIPMENT AND EXPERIMENTAL PROCEDURES.

The vacuum-furnace apparatus for flow temperature and wettability determinations is shown in figure 1. The system is capable of maintaining a vacuum of 1×10^{-6} torr at brazing temperature. The picture shows the furnace rolled back off the muffle. In a typical brazing cycle the specimen is placed into the cold muffle. After pump-down, the heated furnace is rolled onto the muffle and the work very rapidly comes to temperature. After holding for the proper brazing time the furnace is rolled off the muffle. Simultaneously with the former operation, helium can be admitted to facilitate rapid cooling or quenching of the test assembly. Diffusion effects can probably be limited by both of these operations.

⁴ Metals Handbook, 8th Edition. Vol. 1.

Table I. Nominal Compositions, Limits, and Melting Ranges of Alloys Under Consideration

Alloy designation	Composition										Approximate melting range °F
	Si	Fe	Cu	Mn	Mg	Cr	Zn	Ti			
6061 (Limiting)	.40-.8	0.7	.15-.40	.15	.8-1.2	.04-.35	.25	.15			1080-1200
6061 (Nominal)	.6	—	.27	—	1.0	.20	—	—			1080-1200
2219 ¹ (Limiting)	.20	.30	5.8-6.8	.20-.40	.02	—	.10	.02-.10			1010-1190
2219 ² (Nominal)	—	—	6.3	0.30	—	—	—	.06			1010-1190
7075 (Limiting)	.40	.50	1.2-2.0	0.30	2.1-2.9	.18-.35	5.1-6.1	0.20			890-1180
7075 (Nominal)	—	—	1.6	—	2.5	.30	5.6	—			890-1180
2024 (Limiting)	.50	.50	3.8-4.9	.30-.9	1.2-1.8	.10	.25	—			935-1180
2024 (Nominal)	—	—	4.4	0.6	1.5	—	—	—			935-1180

¹ Vanadium 0.05-0.15, Zirconium 0.10-0.25

² Vanadium 0.10, Zirconium 0.18

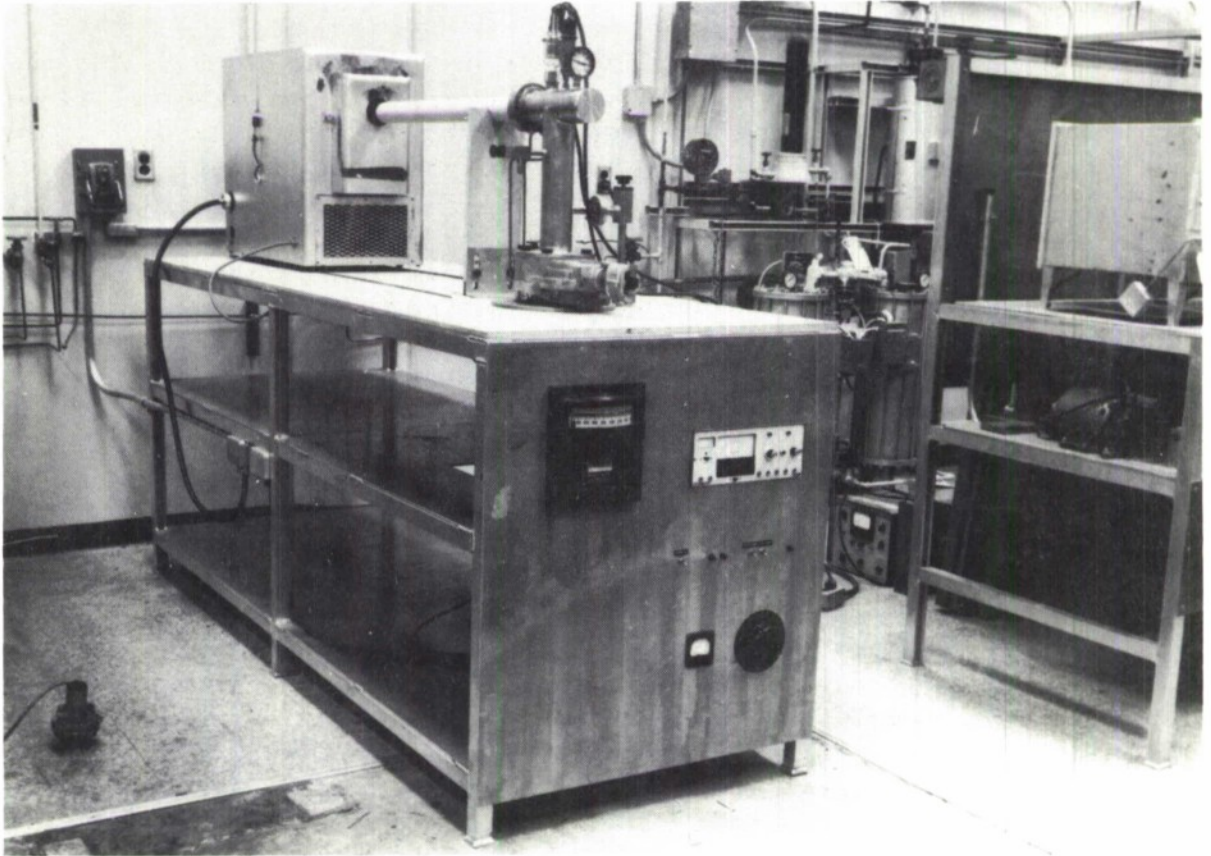


Figure 1. (Y-95339) Apparatus for Determining Flow Temperatures and Wettability of Experimental Brazing Filler Metals

A typical time-temperature response curve for the furnace is shown in figure 2: the temperature measurements indicated are those of an actual sample. Chromel-P versus alumel thermocouples were attached to a specimen, and temperature measurements were made using a potentiometer. Our measurements showed that it takes 25 min for the sample to reach brazing temperature after the furnace is pushed onto the muffle. The variation in temperature setting was found to be $\pm 5^{\circ}\text{F}$. It is believed that the inherently poor heat-transfer characteristics of a vacuum are responsible for the 15-min delay between controller indication of the attainment of brazing temperature and the actual attainment of brazing temperature since the sensing couple for the controller is outside the vacuum.

The majority of our brazing filler metal wettability and flowability determinations were done using 6061 aluminum base metal pads $1/2$ by $1/2$ by $1/16$ in. Those tests that were run on the other base metals of interest were performed on this same standard pad size. Both the pads and the experimental brazing filler metals were cleaned prior to undergoing a thermal cycle for determination of melting temperature and wettability.

Attention to cleanliness is of prime importance to the fluxless brazing process. At room temperature, aluminum oxide forms on "clean" aluminum surfaces immediately. This oxide is one of the most stable known. Its melting point is approximately 3700°F and it is not reduced by heat and/or normal chemical cleaners. In commercial furnace and dip brazing processes where liberal amounts of flux are employed care is taken to reduce the oxide thickness to a "workable" minimum before flux is applied. The consensus on the mechanism of flux action is as follows: First, as the assembly is brought to brazing temperature, the oxide film microfissures due to the differences in coefficients of thermal expansion between the oxide and base metal. Flux readily enters these microfissures and undermines the oxide to some extent. If the oxide is "workably" thin, it breaks up during the undermining process. This continues until the flux is consumed or the metal surface is cleared of oxide.

In fluxless brazing we must assume that, as in commercial operation, a workably thin oxide film is microfissured during heat-up to the brazing temperature. Undermining of the oxide in the fluxless process must be due to the action of the brazing filler metal. It is noteworthy that diffusion (over short distances) may play an important role in the fluxless brazing process. Rate of heating to brazing temperature is also a factor of major importance since oxidation of aluminum takes place in the best vacuums and/or inert atmospheres. In addition, faster heating rates may affect the degree of oxide microfissuring. In any event there is a multiplicity of factors to consider which probably will affect the vacuum brazing of aluminum.

Both 6061 and 2219, as well as all the experimental brazing filler metals, were cleaned by immersion into a 20 vol% HNO_3 —2 vol% HF —water solution at room temperature. The cleaning step was followed immediately by a cold water rinse which, in turn, was followed by flushing with acetone. Alloys 2024 and 7075 did not respond to our satisfaction to the aforementioned chemical cleaning process. Both alloys did, however, respond to a low-temperature perchloric acid electropolishing treatment. In our very first experiments we noted that test results were influenced by the time span between cleaning and brazing. As a result, we held the time between cleaning and brazing to a maximum of 1 hr which, although possibly somewhat difficult for production work, was felt to be optimum for experimental brazing filler metal evaluation.

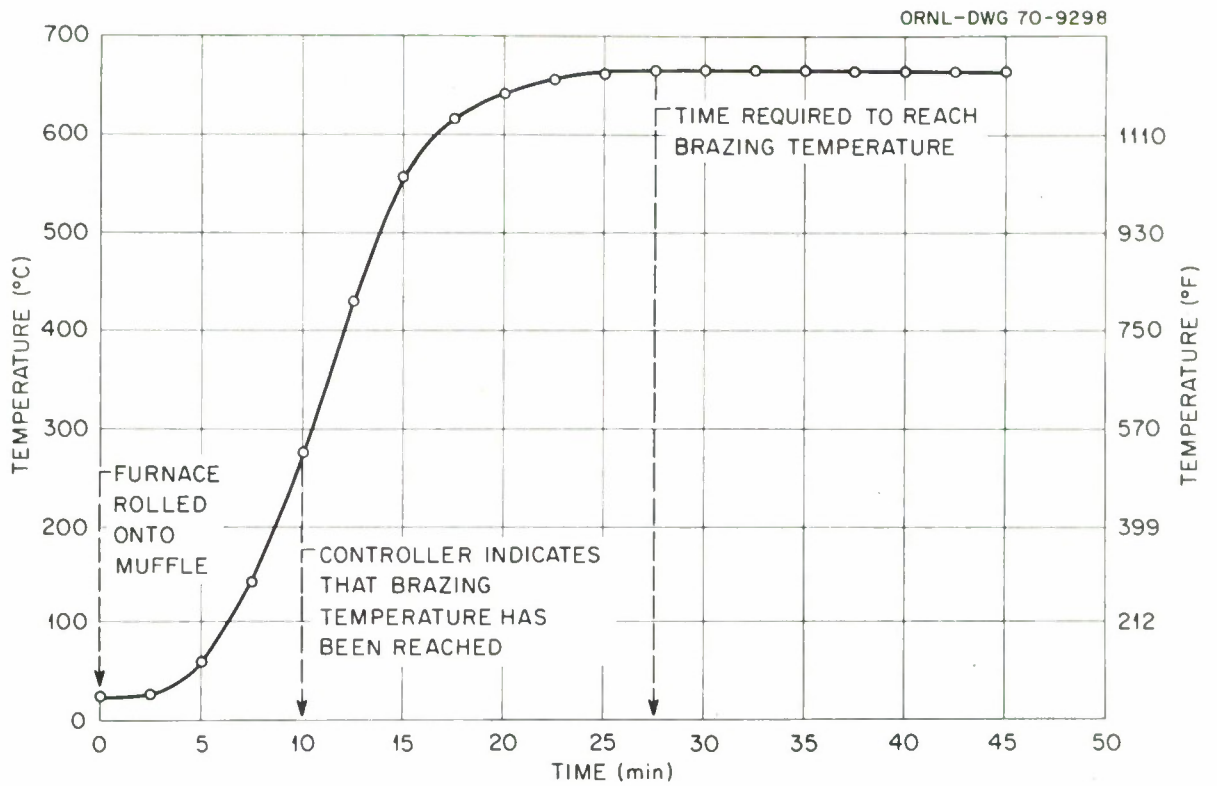


Figure 2. Time-temperature Response for Experimental Brazing Furnace

IV. FORMULATIONS OF EXPERIMENTAL BRAZING FILLER METAL COMPOSITIONS.

Experimental brazing filler metal compositions were formulated using binary phase diagram information to estimate the behavior of ternary alloys. The list of potentially compatible elements shown in table II was used as a guide; however, it was not utilized absolutely since this would have seriously limited the choice of elements for alloying additions. At the request of Edgewood Arsenal, potential measurements on several experimental aluminum-silicon base alloys were made and results are presented in the Appendix. This report covers the results obtained in several promising ternary systems. Our method of estimating ternary compositions of potential interest using binary phase diagrams is shown in figures 3 through 5. The numbers on the ternary plots designate experimental brazing filler metal compositions that were actually formulated, manufactured, and tested. The heavily shaded areas on the layouts indicate those compositions which showed promise from the standpoints of flow temperature and wettability. The areas of lighter shading (figures 3 and 4) indicate compositions which our preliminary investigations indicated would also be of interest.

The first three series of alloys are ternary modifications of the aluminum-silicon system which is the basis of present commercial brazing filler metals. Our germanium and indium additions were based on a potential for melting point depression as evidenced by the aluminum-germanium and aluminum-indium phase diagram. Yttrium additions were based on thermochemical information as well as on melting point depression. The free energy of formation of yttrium oxide (Y_2O_3) is of the same order of magnitude as that for aluminum oxide. It was felt that there was a possibility that this property might enhance the wettability and flowability of these alloys over those of the basic aluminum-silicon binary.

In general, the alloys were prepared using arc-melting techniques in conjunction with a water-cooled copper hearth. The apparatus used for casting buttons for wettability and flow temperature evaluation is shown in figure 6. Each experimental heat was melted several times in an effort to achieve a reasonable degree of homogeneity.

A. Aluminum-Silicon-Indium System.

Nine different compositions were formulated and tested for flow temperature and flowability-wettability in this system. The location of these experimental brazing filler metals on the ternary layout is shown in figure 3. Table III gives the flow temperatures of the alloys along with their specific compositions. All of the alloys formulated melted at a reasonable temperature and flowed well on the 6061 base material. The alloys with the lowest melting ranges (5, 6, 8, and 9) are in a rectangular array on one corner of the box which encompasses the Al-Si-In compositions. As a result, we feel it is necessary to extend the investigation in this particular system to the lightly shaded area in the ternary layout to determine if the optimum alloy had been formulated.

The pad tests for determining flow temperatures and flowability-wettability of the experimental alloys were examined metallographically so that a metallurgical evaluation could be made. Figure 7 shows a macro of the pad test made on alloy No. 8. As you can see, excellent wetting and flow of the alloy was obtained. Figure 8 shows the base metal-braze metal interface of the same specimen at 250X. No excessive reaction is evident.

Figure 9 shows a macro of the pad test made with alloy No. 6. In this particular case, the test was carried out at 1085°F and the photo clearly shows that the brazing temperature-time relationship produced an excessive reaction with the base metal. This photo

Table II. List of Potentially Compatible Elements for Brazing Filler
Metal Alloy Formulation Supplied by Edgewood Arsenal

Elements	EMF potential	Melting point (°C)	1×10^{-5} Vapor pressure	Boiling point (°C)	Specific gravity	Solid solubility in Al ₂ % solubility
Al	-1.706	660.2	660°C/724	2467	2.6989	
Am		850			11.7	
Sb	+0.212	630.5	630°C/466	1380	6.691	657/0.1
Ba	-2.90	725.	717°C/418	1140	3.5	
Be		1278	?1284°C/942	2970	1.848	630°C/0.05
B		2300			2.34	659.7/0.001
Ca	-2.76	842-8		1487	1.55	2.87/616°C
Ce	-2.335	795		3468	8.23/6.67	
Cr	-0.41	1890	?1990°C/907	2482	7.18-2	0.61%/630°C
Cu	+0.158	1083	1083/946	2595	8.96	4.10/500°C 12-15%
Dy		1407		2600	8.536	
Er		1497		2900	9.051	
Ge		937.4		2830	5.323	
Au	+1.42	1063	1063°C/1083	2966	19.32	
Hf		2150		5400	13.29	662/1.22 13% 634
In	-0.49	156.61	157°C/667	2000	7.31	13%/634
		2410	2454°C/1993	4527	22.42	
Fe	+0.777	1535	1535°C/1094	3000	7.874	655/0.052
		920		3469	5.98/5.186	655°C/0.03%
Li	-3.045	179		1317	0.534	5.2%
Mg	-2.375	651	651/287	1107	1.738	400°C/11.5
Mn	-1.029	1244	1244/717	2097	7.21/7.44	626°C/1.35

Table II. (Contd)

Elements	EMF potential	Melting point (°C)	1×10^{-5} Vapor pressure	Boiling point (°C)	Specific gravity	Solid solubility in Al ₂ % solubility
Mo		2610	2622°C/1923	5560	10.22	
Nd	-2.246	1024		3027	6.80/7.004	
Ni	-0.23	1453	1455°C/1157	2732	8.902	625°C/-0.040
Nb	+0.344?	2468		4927	8.57	
Os		3000	2697°C/2101	5000	22.57	
Pd		1552	1555°C/1156	2927	12.02	615/0.1
Pt		1769	1774°C/1606	3827	21.45	
Pr		935		3127	6.6/6/7	
Re		3180		5627	21.02	
Rh		1966		3727	12.41	657.5/0.1
Ru		2250		3900	12.41	659/0.1
Sm		1072		1900	7.5/7.4	
Ag	+0.7966	960.8	961°C/767	2212	10.50	Eutectic 28%
Ta		2996	2496/2407	5425	16.6	
Te	+0.593	449.5		989.8	6.24	
Tl	+1.247	303.5		1457		
Th		1700		4000	11.66	634/0.1
Ti	-2.0	1675		3260	4.54	660°C/1-1.5
V	-0.255	1890		3000	6.11	662.5/0.6
Yb		824		1427	6.977	
Y		1495		2927	4.45	644/0.1
Zr		1852	2127°C/1527	3578	6.35	660.5/0.28

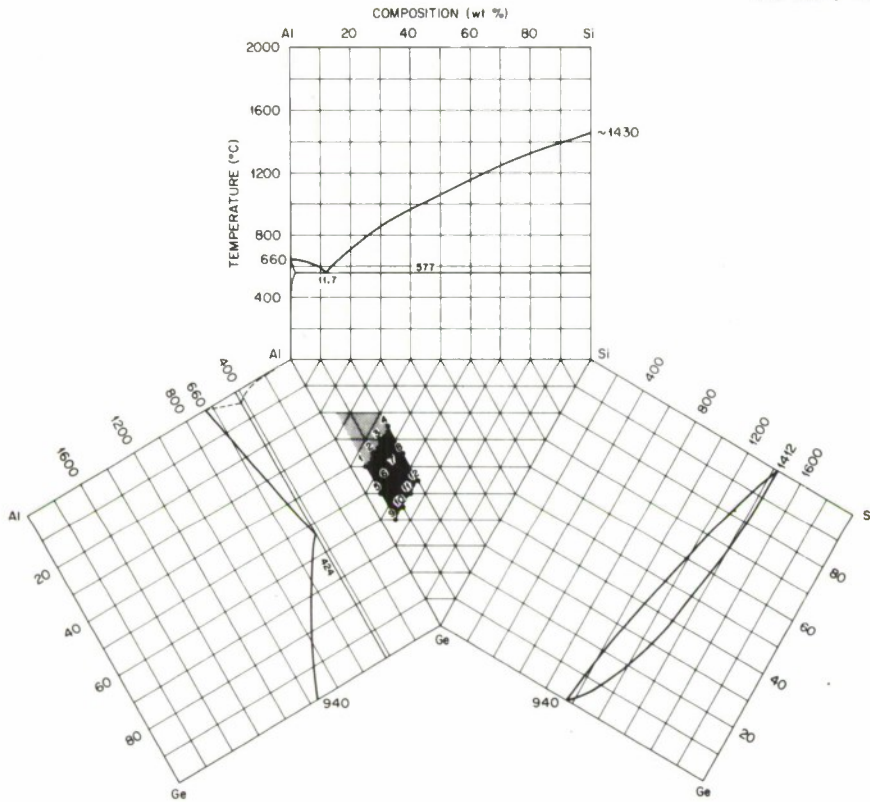


Figure 4. Ternary Plot of the Al-Si-Ge System with Attached Binary Phase Diagram for the Estimation of Compositions of Potential Interest to the Program

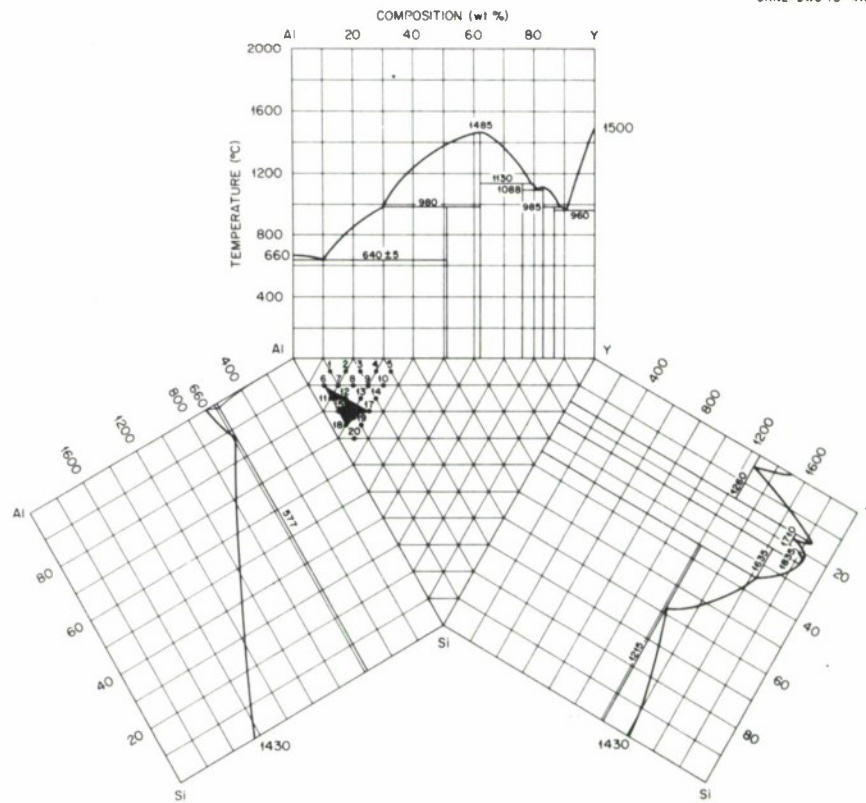


Figure 5. Ternary Plot of the Al-Si-Y System with Attached Binary Phase Diagrams for the Estimation of Compositions of Potential Interest to the Program

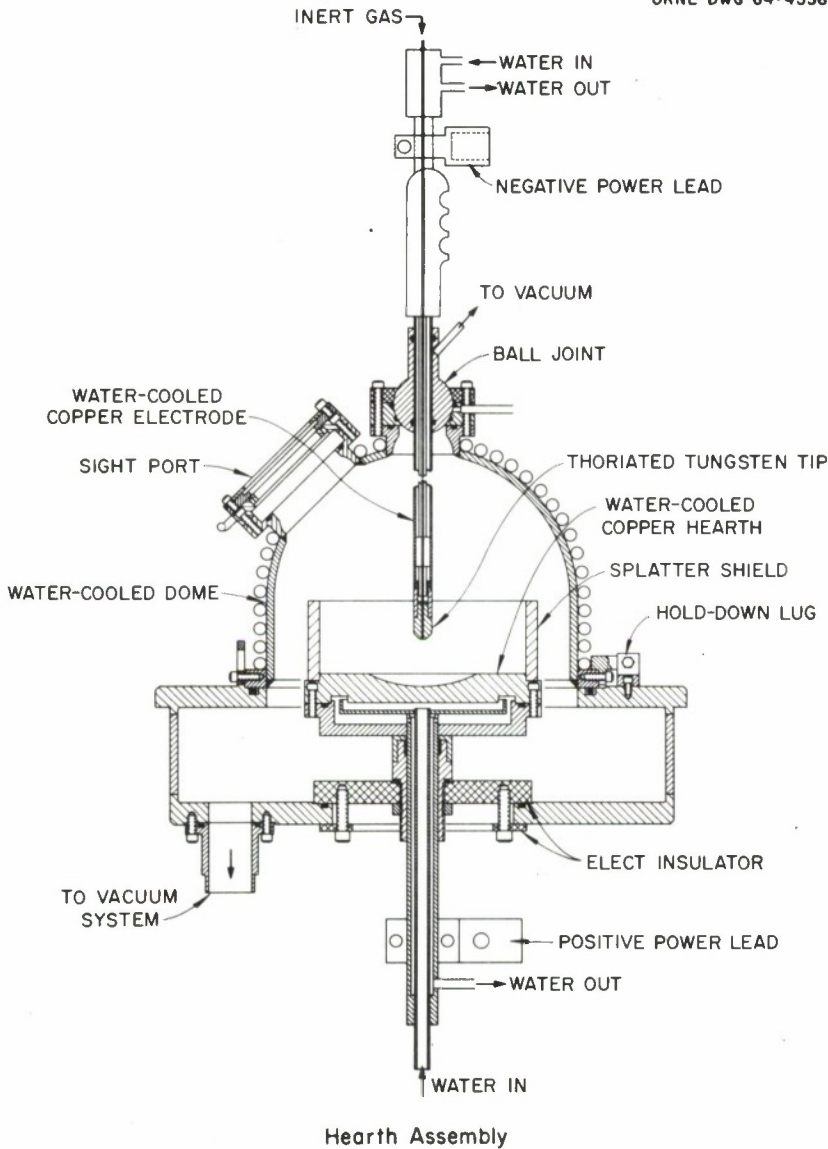


Figure 6. ORNL-DWG-64-4538 Schematic of Apparatus Used for Casting the Experimental Brazing Filler Metals

Table III. Flow Temperatures and Compositions of the Al-Si-In Alloys

Alloy No.	Composition (wt%)			Flow temperature °F
	Al	Si	In	
1	88	10	2	1095
2	80	18	2	1095
3	75	23	2	1095
4	83	7	10	1095
5	75	15	10	1085
6	70	20	10	1085
7	80	2	18	1095
8	72	10	18	1075
9	65	17	18	1085

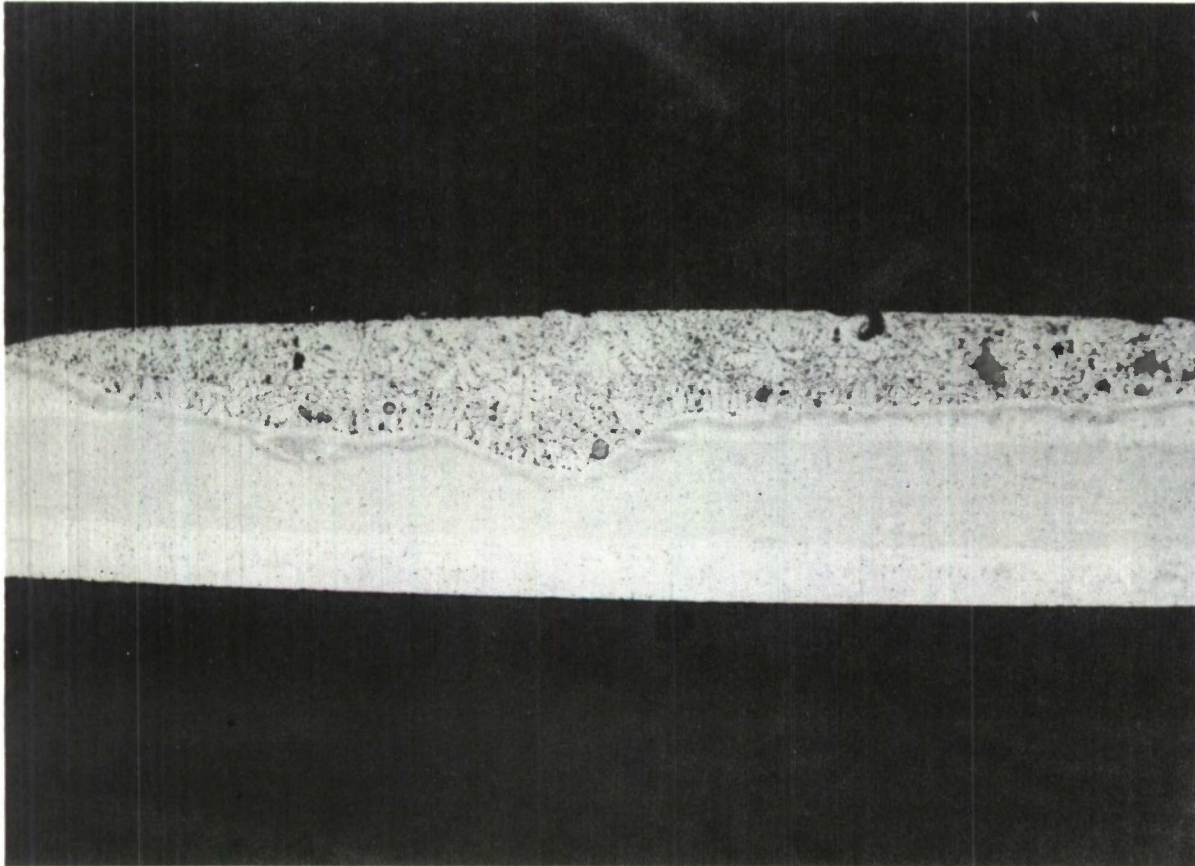


Figure 7. Y-99725 Macro of Pad Test with Al-Si-In Alloy No. 8

(Vacuum Brazed for 7 min at 1075°F.)

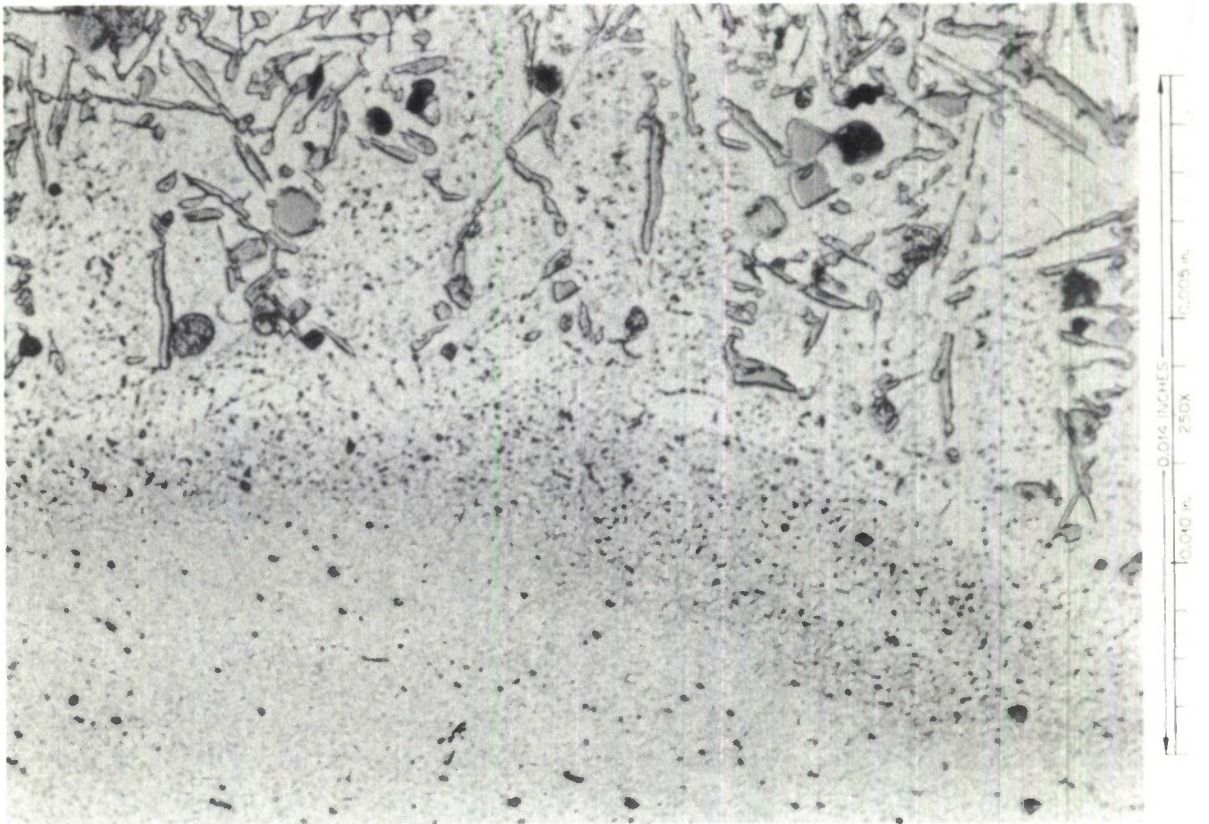


Figure 8. Y-99726 Micro of Interface Between 6061 Base Metal and No. 8 Al-Si-In Alloy 250X

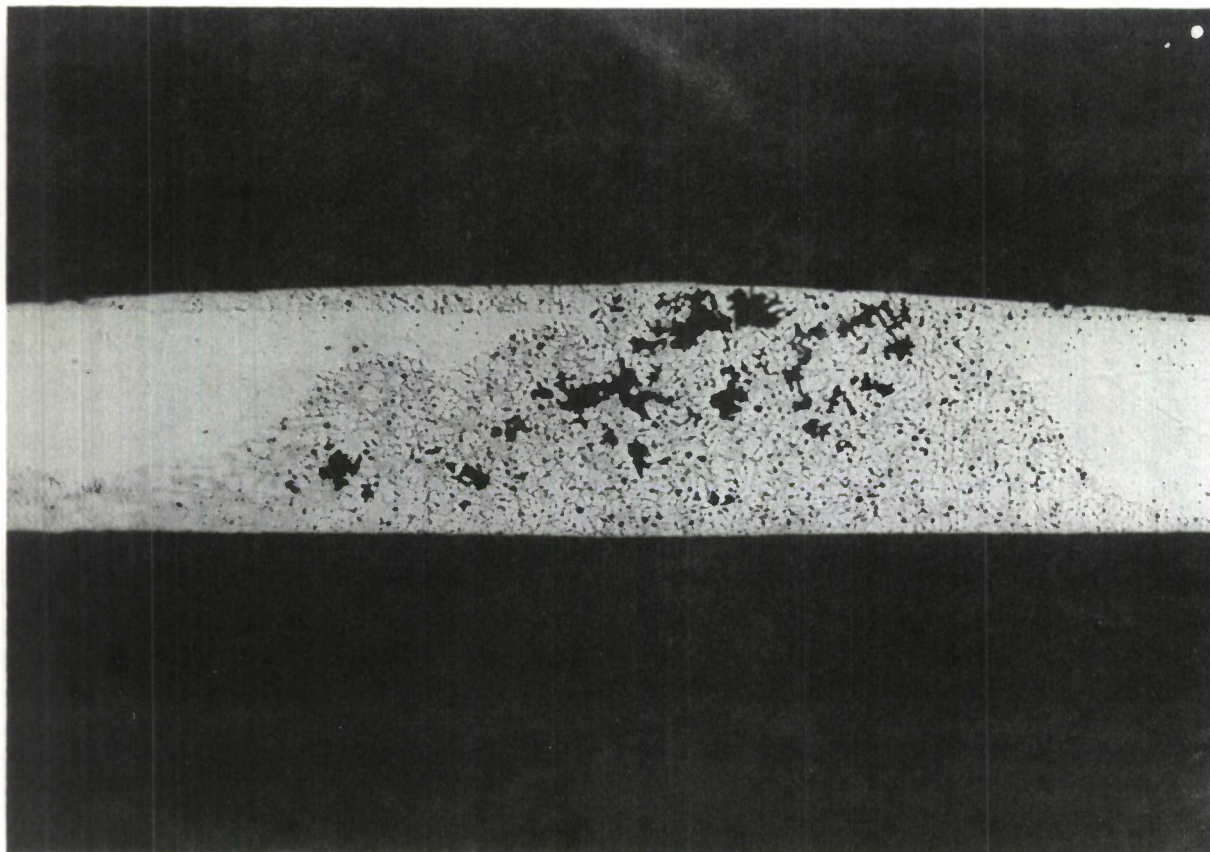


Figure 9. Y-97261 Macro of Pad Test on A1-Si-In Alloy No. 6

(Vacuum brazed for 7 min at 1085°F. An excessive filler metal-base metal reaction is evident)

clearly points out that aluminum brazing results are highly sensitive to small changes in brazing time and temperature due to the fact that the melting points of the brazing filler metals are quite close to the melting points of the base metals. The same alloy was subsequently used to braze the T-joint shown in figure 10 using a slightly shorter brazing cycle with obviously much improved results. Our experience indicates that even further improvement is possible.

Initial attempts to fabricate alloys in this system by hot-swaging have met with limited success. It may be necessary to break down the cast structure by extrusion before hot-swaging to wire.

B. Aluminum-Silicon-Germanium System.

Twelve different compositions were formulated and tested for flow temperature and flowability-wettability in this system. The location of these experimental brazing filler metals on the ternary layout is shown in figure 4. Table IV gives the flow temperatures of these alloys along with their compositions. All of the alloys formulated melted at reasonable temperatures and flowed on the 6061 base metal (heavily shaded area on the plot). Generally speaking, the flow temperatures of these alloys increased with increasing silicon content. All of the alloys containing 5 wt% Si (1, 5, and 9) exhibited flow temperatures of 1020°F. Increasing the silicon content to 20 wt% raised the flow temperature to as high as 1095°F. The lightly shaded area of the layout shows those compositions which may be of further interest.

Table IV. Flow Temperatures and Compositions of the Al-Si-Ge Alloys

Alloy number	Composition			Flow temperature °F
	Al	Si	Ge	
	wt%			
1	55	5	40	1020
2	55	10	35	1060
3	55	15	30	1060
4	55	20	25	1065
5	45	5	50	1020
6	45	10	45	1060
7	45	15	40	1065
8	45	20	35	1095
9	35	5	60	1020
10	35	10	55	1065
11	35	15	50	1075
12	35	20	45	1075

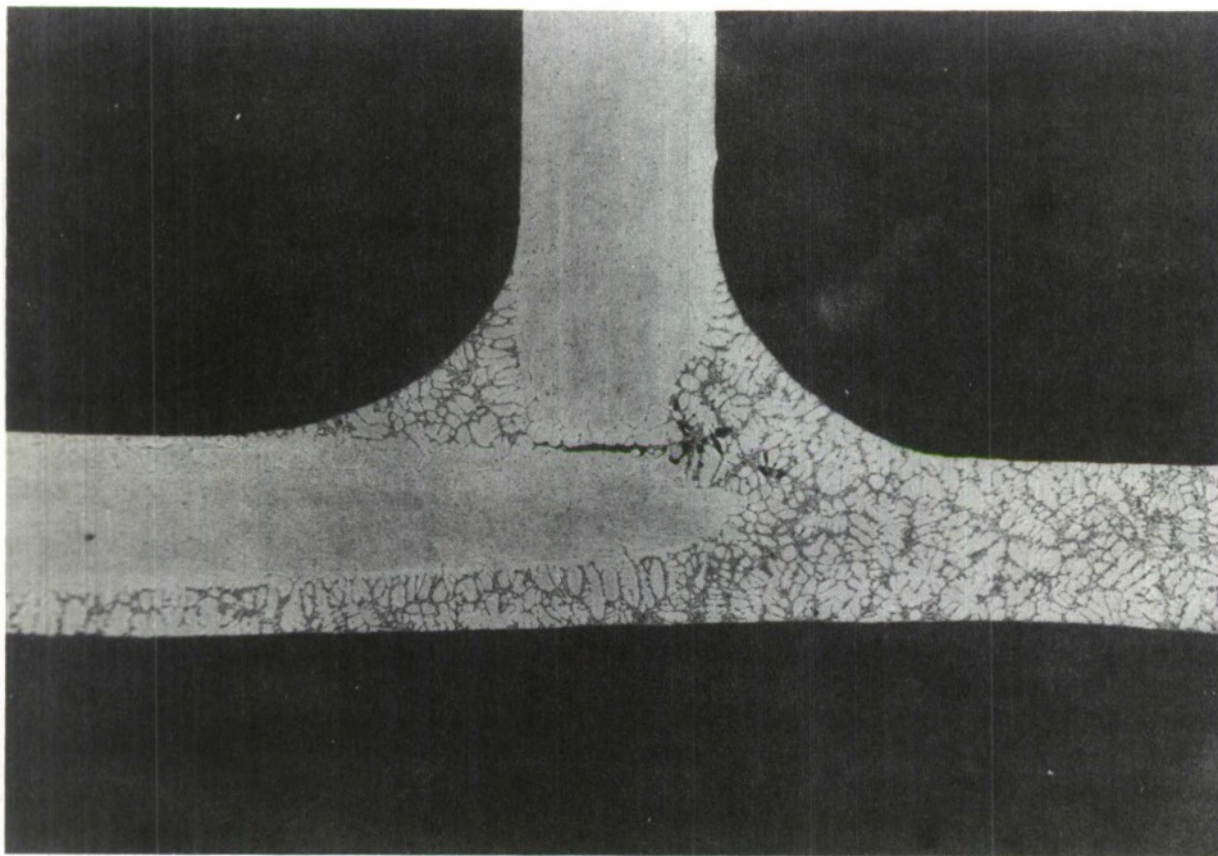


Figure 10. Y-97263 T-Joint Brazed with Al-Si-In Alloy No. 6 at 1085°F for 5 min

Figure 11 shows a series of typical pad tests made at different temperatures (in vacuum) with the filler metal No. 9. Using successively lower test temperatures, we established that the flow temperature of this alloy was 1020°F. Note the excellent flowability and wettability of this experimental composition at all temperatures tested. We subsequently used this same alloy to make the T-joint shown in figure 12, in which the brazing filler metal is preplaced at one end of the joint and flow proceeds along the capillary. The base metal for the T-joint was 6061, and the braze was performed by holding for 2-1/2 min at 1020°F. Good filleting is evident.

Figure 13 shows a macro of the 1020°F pad test performed on alloy No. 5. The 1020°F brazing temperature, 7-min brazing time combination appears to be slightly excessive for this alloy since reaction completely through the pad had taken place. Nevertheless, the wetting and flow exhibited is quite good. It should be noted that this brazing temperature is lower than that used for commercial state-of-the-art brazing filler metals and as such is a significant advancement in aluminum brazing technology. Figure 14 shows a high magnification view of the interface between base metal and braze metal for this particular pad test. Both photos suggest that this composition is very near the Al-Si-Ge eutectic composition. Figures 15 and 16 show the pad test results for one of the higher melting Al-Si-Ge alloys, No. 8. This was the highest melting of this series of alloys. This filler metal also has excellent flow and wetting characteristics and is typical of the higher melting alloys. The degree of reaction with the base metal is satisfactory.

All of the Al-Si-Ge alloys were quite brittle and were not amenable to fabrication into wire or sheet by conventional techniques.

C. Aluminum-Silicon-Yttrium System.

Twenty different compositions were formulated and tested for flow temperature and flowability-wettability in this system. The location of these experimental brazing filler metals on the ternary layout is shown in figure 5. The lightly shaded area shows the location of the most promising compositions. Table V gives the flow temperatures of the alloys that melted below the melting point of the 6061 base metal and the compositions of all the alloys tested.

The higher flow temperatures of these alloys rather limits their use per se as ternary alloys. However, one must remember that additions of minor quantities of elements such as Cu, Sn, Zn, etc., could result in considerable flow point reduction.

Of the seven experimental compositions in this ternary system which did melt below 1150°F, excellent wetting and flow on 6061 base metal was obtained. Alloy No. 18 (70 Al - 25 Si - 5 Y wt%) exhibited the lowest flow temperature. However, as was the case for some compositions in the other series investigated, base metal-filler metal interaction occurred rapidly and excessive penetration was a problem. Thus, careful control of the time-temperature thermal cycle (or further alloying with additional melting point depressants) is necessary.

The alloys in the Al-Si-Y system were much more fabricable than any of the other experimental brazing filler metals investigated. They were readily reduced to 1/16-in. wire as shown in figure 17.

D. Silver-Bearing Alloys.

A series of ternary and quaternary experimental brazing filler metals based on the silver-aluminum system (figure 18) were formulated, melted, and tested on 6061 base metal for

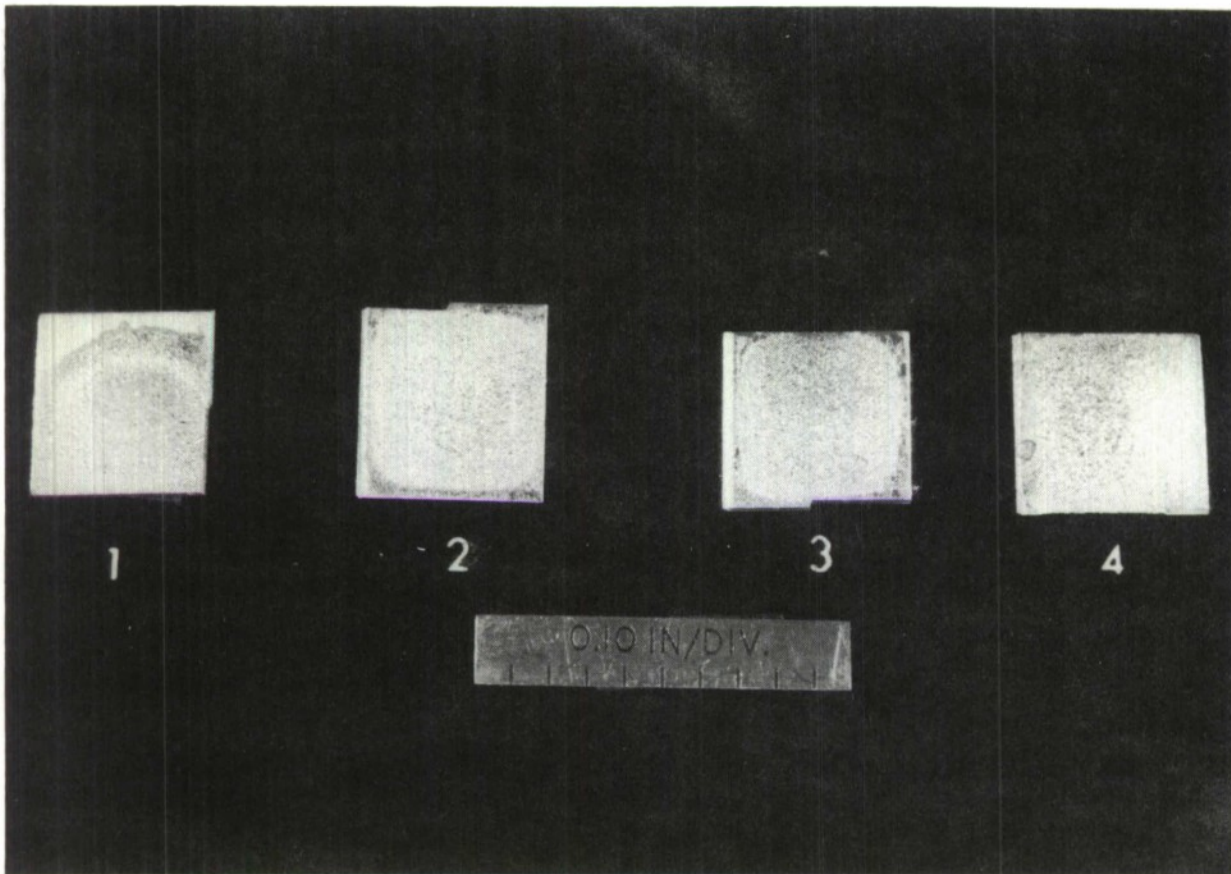


Figure 11. Y-97406 Wetting Tests on Al-Si-Ge No. 9 Made at Successively Higher Temperatures Proceeding From the Left - (1-1020°, 2-1065°, 3-1075°, 4-1095°F)

(Excellent wetting is evident over the 80°F range of temperature shown.)



Figure 12. Y-97407 T-Joint of Al-Si-Ge Alloy No. 9 and 6061 Base Metal
(The brazing was performed at 1020°F for 2-1/2 min. Excellent flow is evident.)

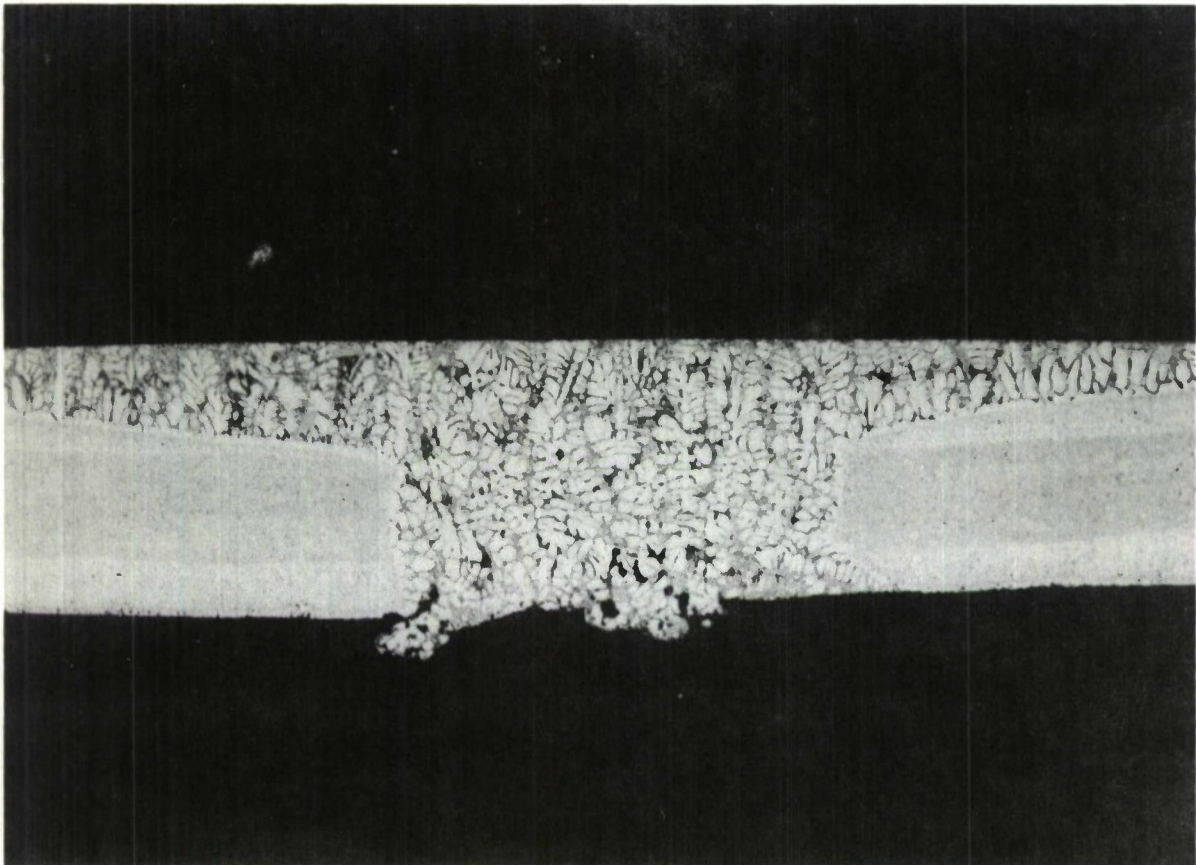


Figure 13. Y-99740 Macro of Pad Test on Al-Si-Ge Alloy No. 5 Vacuum Brazed 7 min at 1022°F

(An excessive reaction occurred at one spot.)

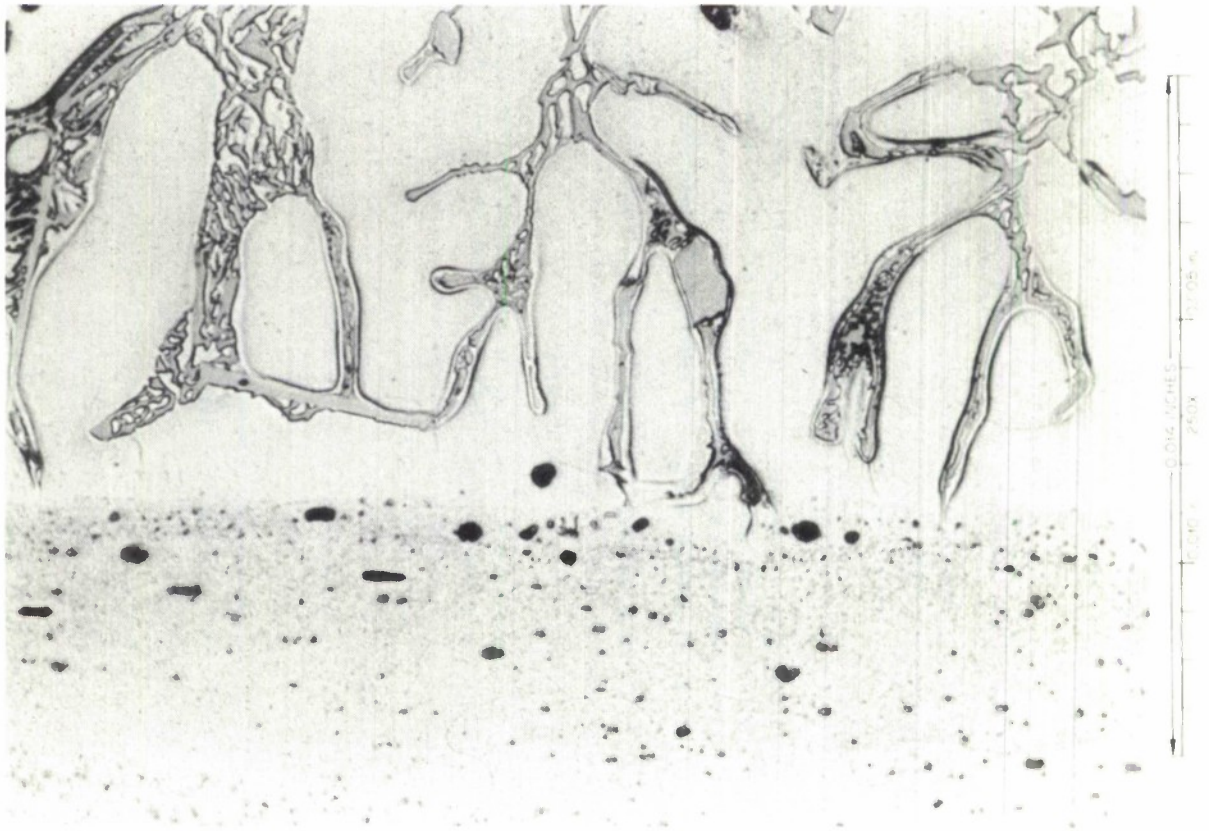


Figure 14. Y-99741 Micro of Interface Between 6061 Base Metal and No. 5 Al-Si-Ge Alloy 250X

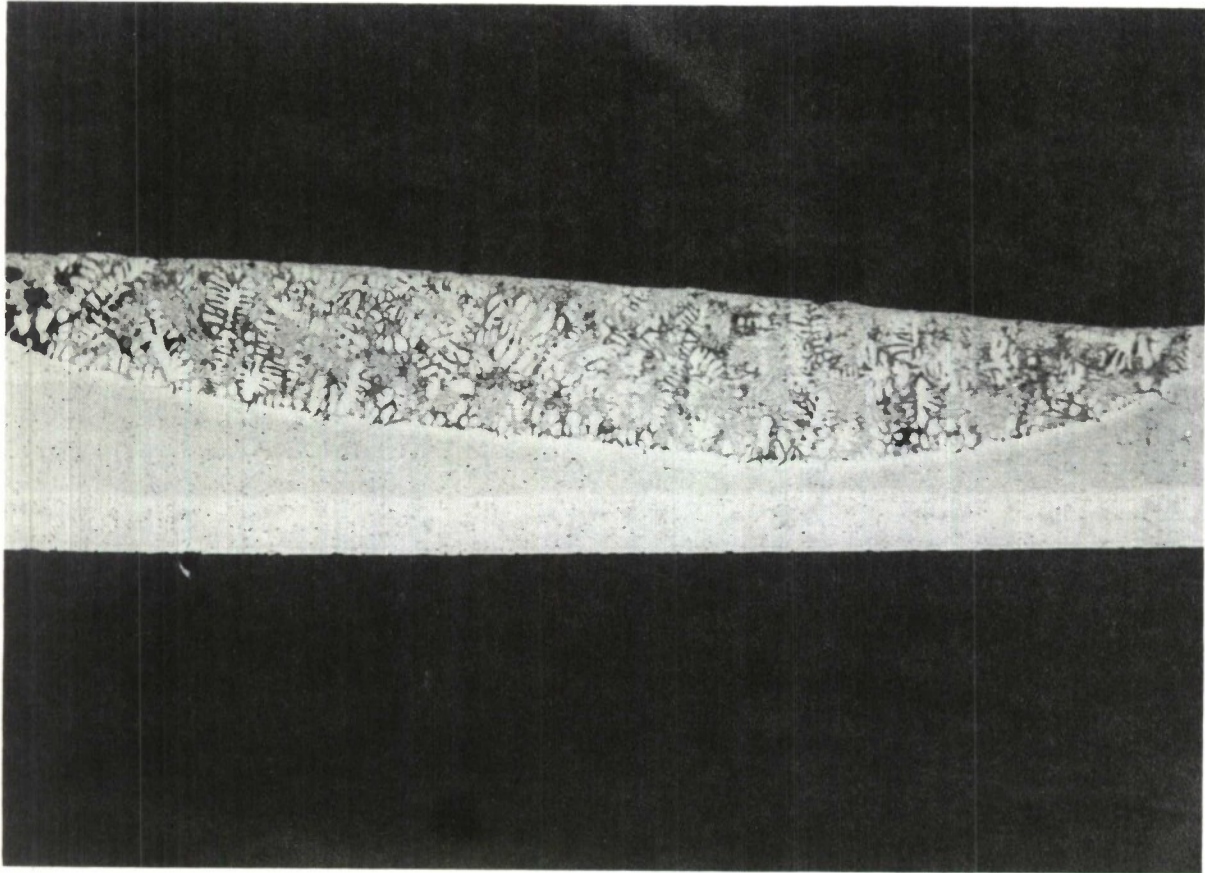


Figure 15. Y-99742 Macro of Pad Test on Al-Si-Ge Alloy No. 8 Vacuum Brazed 7 min at 1095°F



Figure 16. Y-99743 Micro of Interface Between 6061 Base Metal and No. 8 Al-Si-Ge Alloy 250X

Table V. Flow Temperatures and Compositions of the Al-Si-Y Alloys

Alloy number	Composition			Flow temperature
	Al	Si	Y	
		wt%		°F
1	85	5	10	—
2	80	5	15	—
3	75	5	20	—
4	70	5	25	—
5	65	5	30	—
6	85	10	5	1120
7	80	10	10	—
8	75	10	15	—
9	70	10	20	—
10	65	10	25	—
11	80	15	5	1140
12	75	15	10	1110
13	70	15	15	—
14	65	15	20	—
15	75	20	5	1130
16	70	20	10	1140
17	65	20	15	1140
18	70	25	5	1095
19	65	25	10	—
20	65	30	5	—

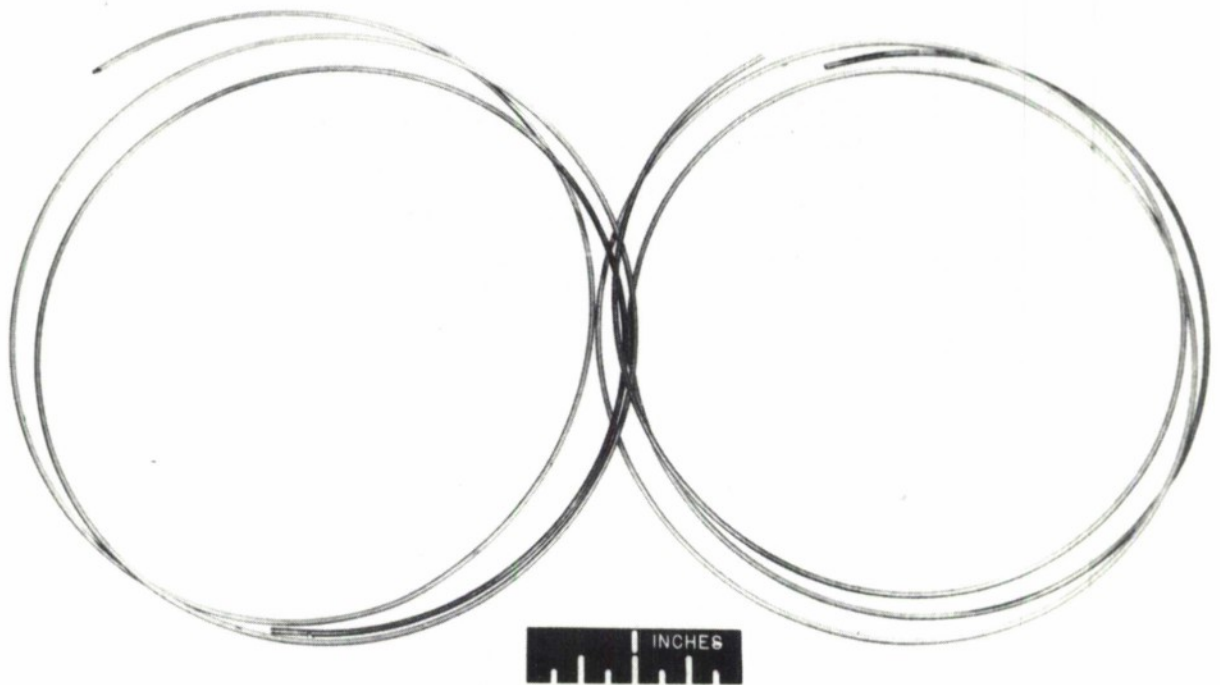


Figure 17. Y-98540 Photo of 1/16-in. Wire Produced by Swaging of Al-Si-Y Alloy No. 18 from a Casting

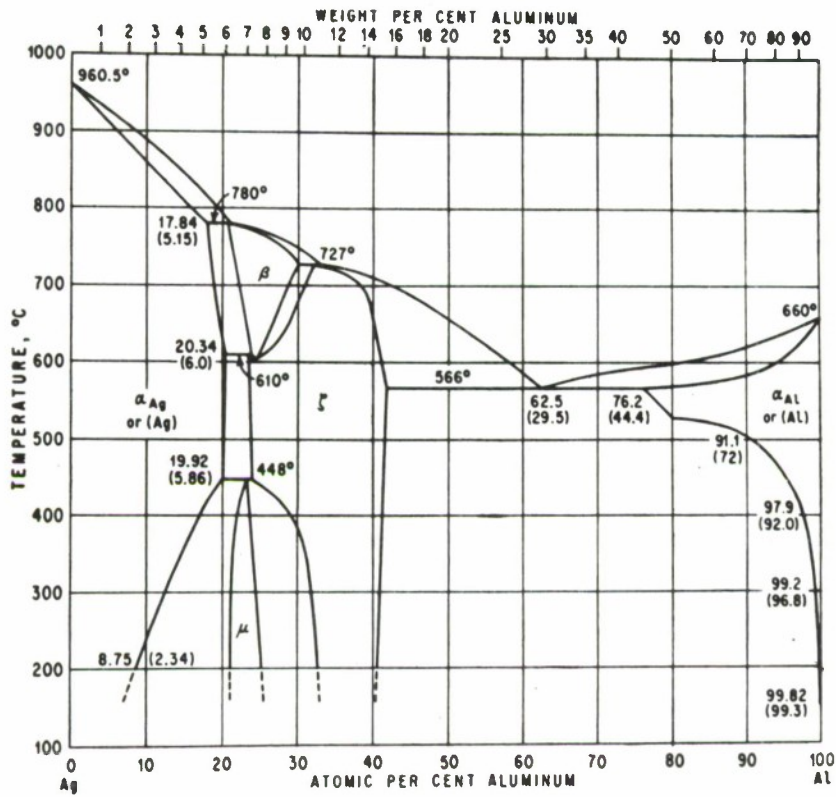


Figure 18. (Y-97404) Silver-Aluminum Phase Diagram

wetting and flow properties. The compositions and flow temperatures of the filler metals are shown in table VI. We were most pleased to find that the Ag-Al-Ge ternary alloy (alloy No. 5) had a flow temperature as low as 930°F. Once again this is a significant contribution since alloys melting at this temperature are necessary for the lower melting, high-strength aluminum alloys (i.e., 7075, 2024). Several other compositions in this table also flowed well; however, the brazing temperatures were somewhat higher.

Table VI. Composition and Flow Temperatures of Silver-Bearing Experimental Brazing Alloys

Alloy No.	Composition (wt%)					Flow temperature
	Ag	Al	In	Ge	Y	
						°F
1	61.5	25.7	12.8	-	-	1075
2	58.3	24.1	12.6	-	5.0	1110
3	55.4	23.1	11.5	-	10.0	Above 1150
4	52.3	21.8	10.9	-	15.0	Above 1150
5	37.9	15.9	-	46.2	-	930
6	36.0	15.1	-	43.9	5.0	1000
7	34.1	14.3	-	41.6	10.0	Above 1110
8	32.2	13.5	-	39.3	15.0	1150

Pad test specimens were sectioned and metallographically examined. From the standpoint of braze metal-base metal interaction and flow, alloy No. 1 (61.5 Ag-25.7 Al-12.8 In, wt%) looks very attractive. Figure 19 (A) and (B) show the braze made at 1075°F at both low and higher magnifications. Figure 20 shows a section of the pad test made with the low-melting alloy No. 5 (37.9 Ag-15.9 Al-46.2 Ge, wt%) at 930°F. Good bonding is evident. It should be noted that 930°F is in the right range for brazing the base metals 7075 and 2024.

An interesting phenomenon is shown in figure 21 in which the brazing filler metal (34.1 Ag-14.3 Al-41.6 Ge-10.0 Y, wt%) did not completely melt, yet appeared to "settle" into the 6061 alloy base metal. It would be expected that severe base-metal erosion would occur if the brazing temperature were to be raised substantially.

E. Magnesium-Bearing Alloys.

Magnesium-bearing experimental brazing alloys could not be melted using conventional arc-melting techniques. We successfully developed techniques for preparing 10-gram buttons of several magnesium-bearing alloys; with this procedure we used a resistance-heated graphite crucible in an inert atmosphere. The alloys formulated (table VII) are binary eutectic compositions. The eutectic temperatures are also shown in the table.

Table VII. Compositions of Magnesium-Bearing Eutectic Alloys and Their Respective Eutectic Temperatures

Alloy No.	Composition (wt%)				Eutectic temperature
	Mg	Ge	Ag	Al	
					°F
1	17.7	82.3	-	-	1260
2	96.6	3.4	-	-	1170
3	51.5	-	48.5	-	880
4	10.1	-	89.9	-	1400
5	35.5	-	-	64.5	840
6	67.7	-	-	32.3	820

Pad tests using the lowest melting binary alloys, 3, 5, and 6, were run at 930°F on 6061 pads. Flow of the experimental alloys was obtained in all three cases and the results looked very promising. Further studies are merited using this melting technique and all of the aforementioned binary alloys. It appeared that several attractive ternary and quaternary filler metals could be derived from these systems.

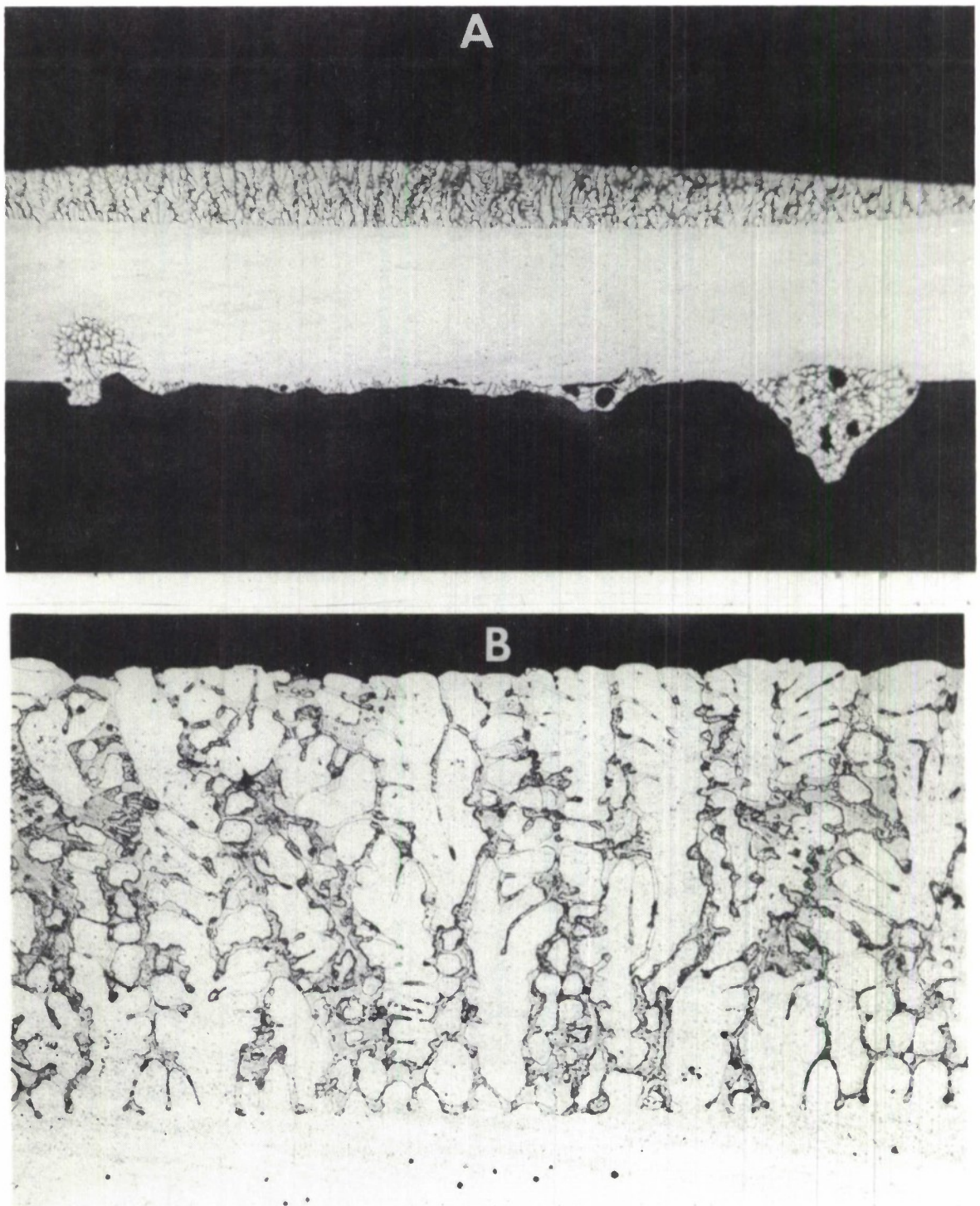


Figure 19. Low (27X) and Higher (150X) Magnification Photographs of the 1075°F Pad Test of the 61.5 Ag-25.7 Al-12.8 In (wt%) Filler Metal on Aluminum Alloy 6061

(Excellent wetting is evident; in fact, the filler metal flowed over the edges and to the back side of the sample. As polished.)

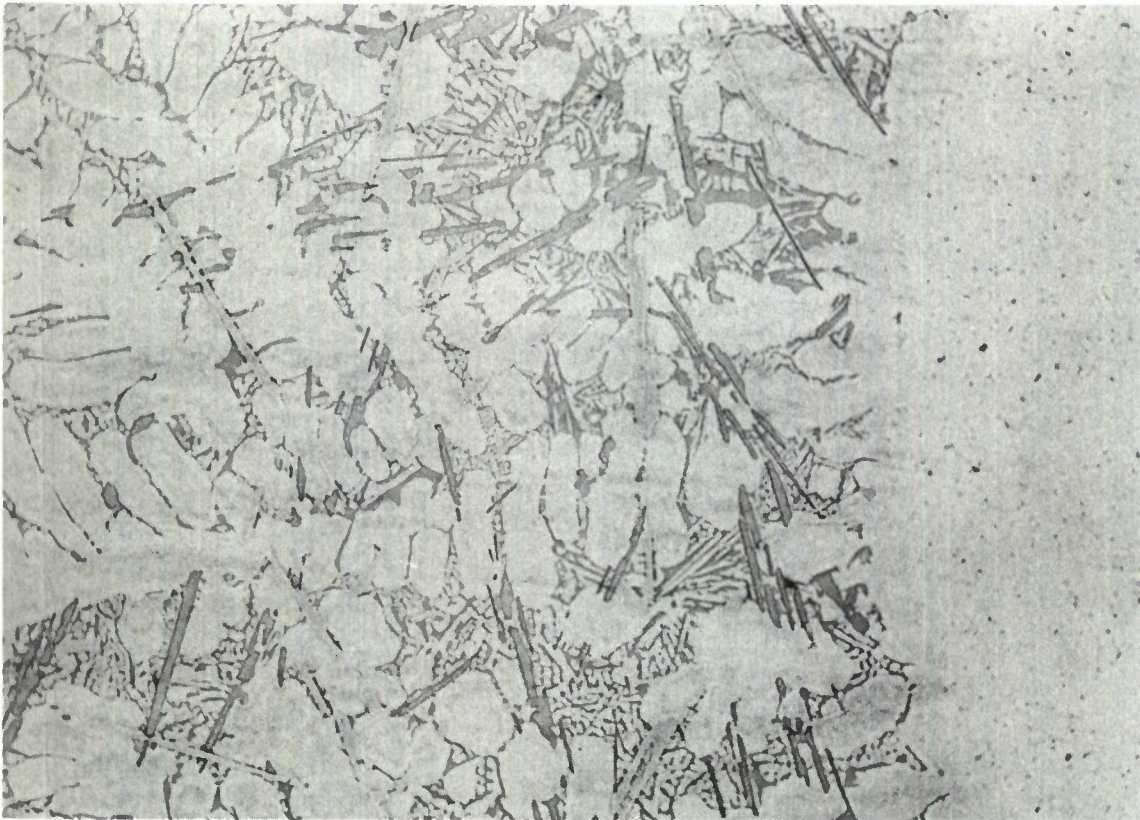


Figure 20. Section of the 930°F Pad Test of the 37.9 Ag-15.9 Al-46.2 Ge (wt%) Alloy on Aluminum Alloy 6061

(A sound braze is evident. 150X. As polished.)

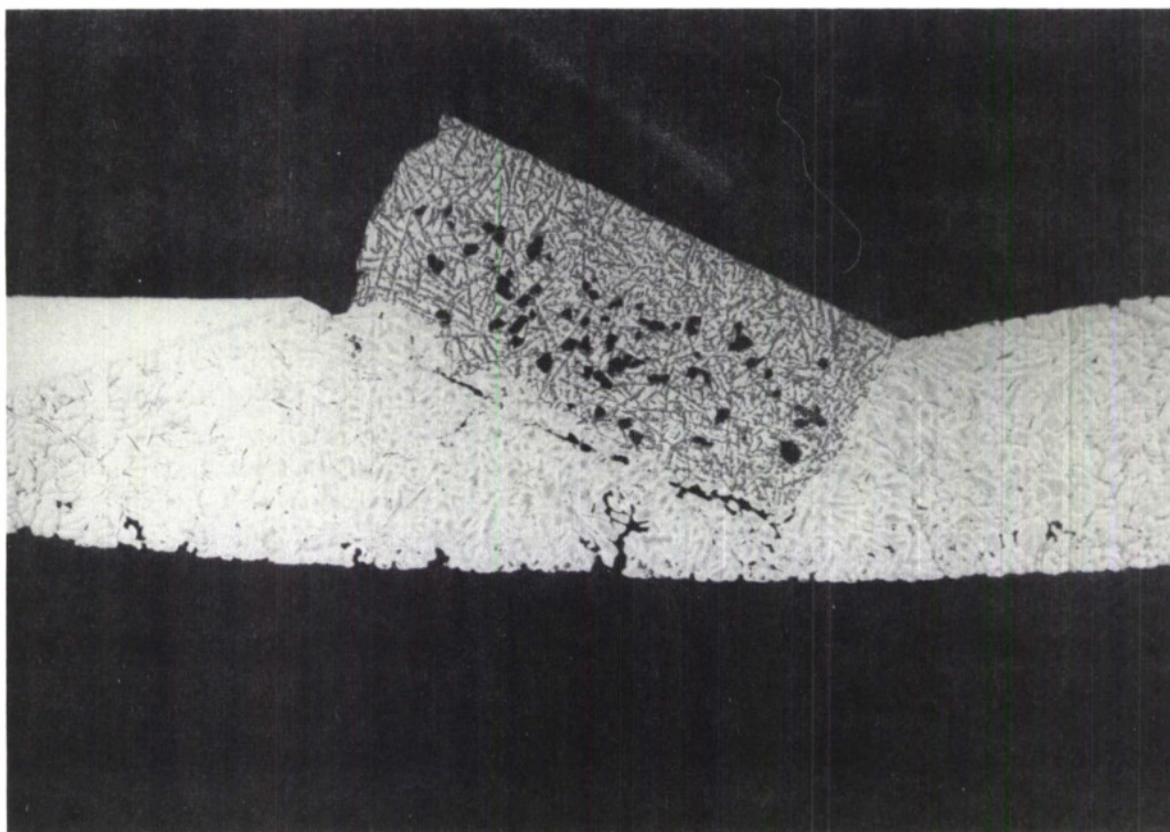


Figure 21. Section of the 1110°F Pad Test of the 34.1 Ag-14.3 Al-41.6 Ge-10.0 Y (wt%) Alloy on Aluminum Alloy 6061

(The brazing filler metal did not completely melt, yet it “settled” into the base metal.)

F. Additional Alloys Formulated and Melted in Al-Si-In and Al-Si-Ge Systems.

A progress report covering the details of our very promising research on vacuum brazing aluminum has been completed.⁵ Since that time, several additional compositions in the Al-Si-In and Al-Si-Ge systems were formulated and prepared into arc-cast buttons. These are listed in table VIII.

The ternary layouts of these systems were seen in figures 4 and 5, respectively. The positions of the previous alloys tested are numbered on the layouts. In the Al-Si-In diagram, the experimental filler metals with the lowest melting ranges (5, 6, 8, and 9) are in a rectangular array on one corner of the box which encompasses the compositions tested to date. The lightly shaded area encompasses the alloys which were made during this report period. In the Al-Si-Ge system, the flow temperatures of the experimental alloys generally decreased with decreasing silicon content. As a result, our new alloys are encompassed by the lightly shaded region in this diagram.

Testing of these compositions of filler metals has not been initiated because of lack of funding. Likewise, the formulation of alloys in possibly even more lucrative alloy systems has not been conducted. We strongly urge that these studies be continued because of the wide application to both DOD and AEC problems.

V. SUMMARY AND CONCLUSION.

During the course of this program, we developed several aluminum-silicon base brazing filler metal compositions that appear to exhibit significant improvements over existing commercial compositions. They braze in vacuum at temperatures lower than the flow temperatures of commercial brazing alloys, and have equal or better flowability. Our lowest flow temperature for these alloys – 1020°F – is about 50°F lower than the generally accepted flow temperature of the Alcoa No. 718 (88 Al-12 Si, wt%) commercial alloy. All of these compositions flowed on aluminum alloy 6061 in vacuum without the use of flux. The Al-Si-In alloys exhibited flow temperatures in the range 1075° to 1095°F, and the Al-Si-Y alloys exhibited flow temperatures in the range 1095° to 1140°F. Alloys in the Al-Si-Ge system were particularly promising and exhibited flow temperatures of 1020° to 1095°F. Of particular interest in this system are the 55 Al-5 Si-40 Ge, 45 Al-5 Si-50 Ge, and 35 Al-5 Si-60 Ge (wt%) alloys all of which flowed at 1020°F; these flow temperatures are approximately 50°F below those of commercial alloys.

It should be emphasized at this point that we feel that the full potential of these alloys is yet to be realized. That is, further work is necessary to show that the optimum compositions in these systems have been found. Secondly, further minor additions of other elements such as Cu, Zn, Sn, etc., should be investigated since they may result in further flow temperature reductions and/or wettability-flowability improvements. Also, optimum time-temperature relationships for vacuum brazing with these alloys must be established.

The silver-bearing ternary and quaternary experimental brazing filler metals were also formulated, melted, and tested on 6061 base metal for wetting and flow properties. It should be emphasized that the Ag-Al-Ge ternary alloy (alloy No. 5, 37.9 Ag-15.9 Al-46.2 Ge, wt%) had a flow temperature of approximately 930°F. This is a significant break-through in aluminum brazing filler

⁵ Werner, W. J., Slaughter, G. M., and Gurtner, F. B. Development of Filler Metals and Procedures for Vacuum Brazing Aluminum. Presented at American Welding Society National Fall Meeting, Baltimore, Maryland, October 5-8, 1970.

Table VIII. Compositions (wt %) of Additional Alloys Formulated and Melted in the Al-Si-In and Al-Si-Ge Systems

Alloy No.	Composition, wt %			
	Al	Si	In	Ge
1	60	38	2	--
2	60	30	10	--
3	60	28	12	--
4	60	10	30	--
5	60	2	38	--
6	68	30	2	--
7	65	25	10	--
8	65	15	20	--
9	65	10	25	--
10	68	2	30	--
11	68	12	20	--
12	70	18	12	--
13	73	2	25	--
14	75	5	20	--
15	76	6	18	--
16	65	30	--	5
17	65	25	--	10
18	65	20	--	15
19	70	25	--	5
20	70	20	--	10
21	75	20	--	5
22	60	20	--	20
23	60	25	--	15
24	60	30	--	10
25	60	35	--	5

metal research since 930°F is in the right range for brazing the base metals 7075 and 2024. From the standpoint of braze metal-base metal interaction and flow, alloy No. 1 (61.5 Ag-25.7 Al-12.8 In, wt%) which brazed at 1075°F also looks very attractive.

Earlier in the program we found that magnesium-bearing experimental brazing alloys could not be melted using conventional arc-melting techniques. Later, we successfully developed techniques for preparing 10-gram buttons of several magnesium-bearing alloys. Pad tests using the lowest melting binary alloys were run at 930°F on 6061 pads. Flow of the experimental alloys was obtained in all three cases and the results were also very promising.

APPENDIX
INTRA-LABORATORY CORRESPONDENCE
OAK RIDGE NATIONAL LABORATORY

March 10, 1971

TO: W. J. Werner, Bldg. 4508

FROM: J. R. Stokely

Subject: Potential Measurements on Alloy Samples

Zero-current potential measurements were made on alloy samples as requested. Measurements were made on each sample under four different sets of experimental conditions. These conditions are listed below.

Series A. Sample as received. Electrolyte solutions: 1 M sodium chloride. Argon atmosphere over solution.

Series B. Samples cleaned with acetone; then etched with 20% nitric acid-2% hydrofluoric acid. Electrolyte solution: 1 M sodium chloride. Argon atmosphere.

Series C. Sample ground to high polish and potential measured immediately. Electrolyte solution: 1 M sodium chloride. Argon atmosphere.

Series D. Sample cleaned with acetone and ground to high polish. Electrolyte: 1 M perchloric acid. Argon atmosphere.

The potential of each alloy was recorded with time and, in most cases, it reached a steady value within ten minutes. A saturated calomel electrode, isolated from the solution by a salt bridge, was used as the reference electrode. A listing of the observed steady potentials is attached for your information.

It was observed that hydrogen was evolved at the alloy surface as the sample was placed in the electrolyte solution. Hydrogen evolution was most pronounced with perchloric acid as the electrolyte (Series D); the entire surface of the alloy was covered with gas bubbles within a minute or two. With sodium chloride as the electrolyte (Series A, B, and C), hydrogen evolution was not nearly as rapid but still was apparent after 5-10 minutes soaking in the solution.

For Series A, B, and C (1 M sodium chloride solution) reproducible potentials for the Al-Si-In alloys were obtained. Final steady potentials of from -1.20 to -1.29 v vs. S.C.E. (saturated calomel electrode) were observed with these alloys. No systematic change in potential was observed as the composition of the alloy was varied.

The potentials of the Al-Si-Ge alloys for Series A, B, and C are less negative than those for the Al-Si-In alloys. Again, there does not appear to be a correlation between alloy composition and the measured potentials. The potentials of the Al-Si-Ge alloys vary from -0.92 to -1.19 v vs. S.C.E.

The potentials observed for most of the alloys in 1 M perchloric acid are about 0.2 v less negative than potentials observed with the sodium chloride solution. We think this difference is due to the higher hydrogen ion concentration in the solution. (As the hydrogen ion concentration becomes higher, a less negative potential would be required to reduce hydrogen ion to hydrogen gas).

Our conclusion involving these potential measurements is that we are measuring essentially the hydrogen ion-hydrogen gas potential at the surface of the alloy. Differences in potential within each series are probably due to differences in hydrogen over voltage with the alloys.

J. R. Stokely
Analytical Chemistry Division

SERIES A

<u>Alloy</u>	<u>No.</u>	<u>Potential Volts Versus S.C.E.*</u>
75 A1-15 Si-10 Y	2	- 1.14
46.2 Ge-37.9 Ag-15.9 A1	5	- 0.79
85 A1-10 Si-5Y	6	- 0.97
55 A1-5 Si-40 Ge	51	- 1.16
55 A1-10 Si-35 Ge	52	- 1.27
55 A1-15 Si-30 Ge	53	- 1.18
55 A1-20 Si-25 Ge	54	- 1.19
45 A1-5 Si-50 Ge	55	- 1.07
45 A1-10 Si-45 Ge	56	- 1.08
45 A1-15 Si-40 Ge	57	- 0.97
35 A1-10 Si-55 Ge	60	- 1.16
88 A1-10 Si-2 In	21	- 1.21
80 A1-18 Si-2 In	22	- 1.23
75 A1-23 Si-2 In	23	- 1.21
83 A1-7 Si-10 In	24	- 1.24
75 A1-10 Si-10 In	25	- 1.25
70 A1-20 Si-10 In	26	- 1.22
80 A1-2 Si-18 In	27	- 1.20
72 A1-10 Si-18 In	28	- 1.29
65 A1-17 Si-18 In	29	- 1.22
70 A1-25 Si-5 Y	WIRE	- 0.98
35 A1-5 Si-60 Ge	59	- 0.86

* S.C.E. - saturated calomel electrode

SERIES B

<u>Alloy</u>	<u>No.</u>	<u>Potential Volts Versus S.C.E.</u>
75 A1-15 Si-10 Y	2	- 0.99
46.2 Ge-37.9 Ag-15.9 A1	5	- 0.80
85 A1-10 Si-5 Y	6	- 1.00
55 A1-5 Si-40 Ge	51	- 0.92
55 A1-10 Si-35 Ge	52	- 0.99
55 A1-15 Si-30 Ge	53	- 1.02
55 A1-20 Si-25 Ge	54	- 1.03
45 A1-5 Si-50 Ge	55	- 0.94
45 A1-10 Si-45 Ge	56	- 0.99
45 A1-15 Si-40 Ge	57	- 1.01
35 A1-10 Si-55 Ge	60	- 1.01
88 A1-10 Si-2 In	21	- 1.21
80 A1-18 Si-2 In	22	- 1.22
75 A1-23 Si-2 In	23	- 1.22
83 A1-7 Si-10 In	24	- 1.28
75 A1-10 Si-10 In	25	- 1.26
70 A1-20 Si-10 In	26	- 1.25
80A1-2 Si-18 In	27	- 1.21
72 A1-10 Si-18 In	28	- 1.26
65 A1-17 Si-18 In	29	- 1.25
70 A1-25 Si-5 Y	WIRE	-1.08
35 A1-5 Si-60 Ge	59	- 0.84

SERIES C

<u>Alloy</u>	<u>No.</u>	<u>Potential Volts Versus S.C.E.</u>
75 Al-15 Si-10 Y	2	- 1.12
55 Al-5 Si-40 Ge	51	- 1.14
55 Al-10 Si-35 Ge	52	- 1.19
55 Al-15 Si-30 Ge	53	- 1.19
55 Al-20 Si-25 Ge	54	- 1.19
45 Al-5 Si-50 Ge	55	- 1.18
45 Al-10 Si-45 Ge	56	- 1.13
45 Al-15 Si-40 Ge	57	- 1.14
88 Al-10 Si-2 In	21	- 1.21

SERIES D

<u>Alloy</u>	<u>No.</u>	<u>Potential Volts Versus S.C.E.</u>
75 A1-15 Si-1Y	2	- 0.82
55 A1-5 Si-40 Ge	51	- 0.68
55 A1-10 Si-35 Ge	52	- 0.67
55 A1-15 Si-30 Ge	53	- 0.70
55 A1-20 Si-25 Ge	54	- 0.68
45 A1-5 Si-50 Ge	55	- 0.64
45 A1-10 Si-45 Ge	56	- 0.60
45 A1-15 Si-40 Ge	57	- 0.66
35 A1-10 Si-55 Ge	60	- 0.64
88 A1-10 Si-2 In	21	- 0.96
80 A1-18 Si-2 In	22	- 0.97
75 A1-23 Si-2 In	23	- 0.92
83 A1-7 Si-10 In	24	- 0.92
75 A1-10 Si-10 In	25	- 1.00
70 A1-20 Si-10 In	26	- 1.00
80 A1-2 Si-18 In	27	- 0.92
72 A1-10 Si-18 In	28	- 1.00
65 A1-17 Si-18 In	29	- 0.95, - 0.90
46.2 Ge-37.9 Ag-15.9 Al	5	- 0.52
85 A1-10 Si-5Y	6	- 0.69
70 A1-25 Si-5Y	WIRE	- 0.58

DISTRIBUTION LIST

<u>Agency</u>	<u>Copies</u>
<u>EDGEWOOD ARSENAL</u>	
Associate Technical Director, ATTN: SMUEA-TD-A	1
Record Copy, ATTN: SMUEA-ACAR	1
Authors Copy, Industrial Operations Division	89
Mail Room, Technical Support Directorate	1
Director, Research Laboratories	1
Chief, Medical Research Laboratory	1
Chief, Toxicology Department	1
Chief, Industry Liaison Office	1
Chief, Chemical Research Laboratory	1
Chief, Analytical Chemistry Department	1
Chief, Physical Chemistry Department	1
Chief, Physical Research Laboratory	1
Chief, Defensive Research Department	1
Chief, Dissemination Research Department	1
Director, DDEL	1
ATTN: SMUEA-DPP	1
ATTN: SMUEA-DME	1
ATTN: SMUEA-DDW	1
Director, WDEL	4
Technical Support Directorate	
Chief, Pre-Production Evaluation Division	1
Chief, Field Evaluation Division	1
Technical Information Division	
ATTN: SMUEA-TSTI-TP	2
ATTN: SMUEA-TSTI-TR	1
ATTN: SMUEA-TSTI-TL	10
Patent Advisor, Office of Counsel	1
USACDC Liaison Officer	1
<u>DEPARTMENT OF DEFENSE</u>	
Defense Documentation Center	20
Cameron Station	
Alexandria, Virginia 22314	
Defense Intelligence Agency	1
Army Materiel Production Division	
ATTN: DIAAP-1R3	
Washington, D.C. 20301	

DISTRIBUTION LIST (Contd)

<u>Agency</u>	<u>Copies</u>
Director, Technical Information Advanced Research Projects Agency Office, Secretary of Defense The Pentagon Washington, D.C. 20301	1
<u>ATOMIC ENERGY COMMISSION</u>	
Los Alamos Scientific Laboratory P.O. Box 1663, ATTN: Report Librarian Los Alamos, New Mexico 87544	1
<u>DEPARTMENT OF THE ARMY</u>	
Department of the Army Office, Chief of Research & Development ATTN: OCRD-CRDNCB Washington, D.C. 20310	1
Headquarters Department of the Army, OACSFOR ATTN: FOR CM SR Washington, D.C. 20310	1
Director of CBR & Nuclear Operations, OACSFOR Department of the Army ATTN: Mr. N. E. Sills Washington, D.C. 20310	1
Commanding Officer US Army Limited War Laboratory ATTN: CRD-AM-7C ATTN: CRD-AM-7A Aberdeen Proving Ground, Maryland 21005	1 1
<u>US ARMY MATERIEL COMMAND</u>	
Commanding General US Army Materiel Command ATTN: AMCAD-S ATTN: AMC RD-BC ATTN: AMC RD-TC ATTN: AMCMA-DA Washington, D.C. 20315	1 1 1 1

DISTRIBUTION LIST (Contd)

<u>Agency</u>	<u>Copies</u>
Commanding General US Army Test & Evaluation Command ATTN: AMSTE-NB Aberdeen Proving Ground, Maryland 21005	1
Director Army Materials & Mechanics Research Center ATTN: AMXMR-ATL Watertown, Massachusetts 02172	1
US Army Missile Command Redstone Scientific Information Center ATTN: Chief, Document Section Redstone Arsenal, Alabama 35809	2
Commanding Officer Rocky Mountain Arsenal Denver, Colorado 80240	1
Commanding General Deseret Test Center ATTN: STEDP-MS-TI Dugway, Utah 84022	2
Commanding General US Army Natick Laboratories ATTN: Technical Library Natick, Massachusetts 01760	1
Commanding Officer Aberdeen R&D Center ATTN: AMXRD-T, William Kolinakis Aberdeen Proving Ground, Maryland 21005	1
US Army Mob Equip Res & Dev Center ATTN: Tech Documents Ctr, Bldg 315, Vault Fort Belvoir, Virginia 22060	1
Commanding Officer ATTN: Technical Library Aberdeen Proving Ground, Maryland 21005	1
<u>US ARMY MUNITIONS COMMAND</u>	
Commanding Officer Picatinny Arsenal ATTN: SMUPA-VL Dover, New Jersey 07801	1

DISTRIBUTION LIST (Contd)

<u>Agency</u>	<u>Copies</u>
Commanding General US Army Munitions Command	
ATTN: AMSMU-QA	1
ATTN: AMSMU-RE-R	1
ATTN: AMSMU-RE-N	1
ATTN: AMSMU-SS-SC	1
Dover, New Jersey 07801	
 Commanding Officer US Army Frankford Arsenal	
ATTN: SMUFA-U2100	1
ATTN: C2500 - Library	1
Philadelphia, Pennsylvania 19137	
 Commanding Officer Pine Bluff Arsenal	1
ATTN: Director of Chemical Operations Pine Bluff, Arkansas 71601	
 Hq, USA MUCOM	1
ATTN: AMSMU-LB USAMMCS-LN O Picatinny Arsenal Dover, New Jersey 07801	
 <u>CONARC</u>	
Commandant US Army Missile & Munitions Center & School	2
ATTN: AJQ-UE Redstone Arsenal, Alabama 35809	
 <u>COMBAT DEVELOPMENT COMMAND</u>	
Commanding Officer US Army Combat Development Command	1
ATTN: Combat Support Group Fort Belvoir, Virginia 22060	
 Commanding Officer USACDC Maintenance Agency	1
ATTN: CDCMA-A (Library) Aberdeen Proving Ground, Maryland 21005	
 Commanding Officer USACDC Aviation Agency	1
Building 506 Fort Rucker, Alabama 36360	

DISTRIBUTION LIST (Contd)

<u>Agency</u>	<u>Copies</u>
Commanding Officer USACDC Special Warfare Agency ATTN: Chemical Advisor Fort Bragg, North Carolina 28307	1
Commanding General USACDC Experimentation Command ATTN: CDEC-AG Fort Ord, California 93941	1
Executive Officer USACDC Institute of Nuclear Studies Fort Bliss, Texas 79916	1
<u>DEPARTMENT OF THE NAVY</u>	
Chief, Office of Naval Research Department of the Navy ATTN: Code 454 Washington, D.C. 20360	1
Director US Naval Research Laboratory ATTN: Code 1031, Army Lia Ofcr Washington, D.C. 20390	1
US Naval Applied Science Laboratory ATTN: Code 944 Naval Base Brooklyn, New York 11251	1
Commander (Code 753) Naval Weapons Center ATTN: Technical Library China Lake, California 93555	1
Commanding Officer ATTN: Army Chemical Office US Naval Explosive Ordnance Disposal Facility Indian Head, Maryland 20640	1
Commander US Naval Weapons Laboratory ATTN: Code WWB Dahlgren, Virginia 22448	1

DISTRIBUTION LIST (Contd)

<u>Agency</u>	<u>Copies</u>
Officer in Charge Naval Material Industrial Resources Office Philadelphia, Pennsylvania 19112	1
<u>DEPARTMENT OF THE AIR FORCE</u>	
AFRPL (RPC) ATTN: Chief, Propellant Division Edwards AFB, California 93523	1
ADTC (ADAM) Eglin AFB, Florida 32542	1
Commander Foreign Technology Division ATTN: TDEWA Wright-Patterson AFB, Ohio 45433	2
Headquarters Aerospace Medical Division (AMRS) Brooks Air Force Base, Texas 78235	1
Air Force Armament Labs (ATCE) Chief, Non-Explosive Munitions Division (ATM) Eglin AFB, Florida 32542	2

DISTRIBUTION LIST FOR DD 1473's

Chief of Research and Development Headquarters, Dept. of the Army ATTN: Director of Army Technical Information Washington, D.C. 20310	3
Technical Support Directorate ATTN: SMUEA-TSTD	1
ATTN: SMUEA-TSTI-TP	1
ATTN: SMUEA-TSTI-TL	2

UNCLASSIFIED

Security Classification

DOCUMENT CONTROL DATA - R & D

(Security classification of title, body of abstract and indexing annotation must be entered when the overall report is classified)

1. ORIGINATING ACTIVITY (Corporate author) CO, Edgewood Arsenal ATTN: SMUEA-TSIO-MS Edgewood Arsenal, Maryland 21010		2a. REPORT SECURITY CLASSIFICATION UNCLASSIFIED	
		2b. GROUP NA	
3. REPORT TITLE THE DEVELOPMENT OF FILLER METAL ALLOYS FOR VACUUM BRAZING-GAS QUENCHING OF ALUMINUM ALLOYS			
4. DESCRIPTIVE NOTES (Type of report and inclusive dates) The program was started in April 1969 and concluded in December 1970.			
5. AUTHOR(S) (Last name, middle initial, first name) William J. Werner, and Gerry M. Slaughter			
6. REPORT DATE November 1971		7a. TOTAL NO. OF PAGES 58	7b. NO. OF REFS 5
8a. CONTRACT OR GRANT NO. A. PROJECT NO. 4932-10-51129		8b. ORIGINATOR'S REPORT NUMBER(S)	
c. d.		9a. OTHER REPORT NUMBER(S) (Any other numbers that may be assigned this report)	
10. DISTRIBUTION STATEMENT Approved for public release; distribution unlimited.			
11. SUPPLEMENTARY NOTES Vacuum brazing-gas quenching of chemical and related munitions <i>were developed</i>		12. SPONSORING MILITARY ACTIVITY	
13. ABSTRACT During the course of this program, we developed several aluminum-silicon base brazing filler metal compositions that appear to exhibit significant improvements over existing commercial compositions. They braze in vacuum at temperatures lower than the flow temperatures of commercial brazing alloys, and have equal or better flowability. One lowest flow temperature for these alloys - 1020°F - is about 50°F lower than the generally accepted flow temperature of the Alcoa No. 718 (88 Al-12 Si, wt%) commercial alloy. All of these compositions flowed on aluminum alloy 6061 in vacuum without the use of flux. The Al-Si-In alloys exhibited flow temperatures in the range 1075° to 1095°F, and the Al-Si-Y alloys exhibited flow temperatures in the range 1095° to 1140°F. Alloys in the Al-Si-Ge system were particularly promising and exhibited flow temperatures of 1020° to 1095°F. Of particular interest in this system are the 55 Al-5 Si-40 Ge, 45 Al-5 Si-50 Ge, and 35 Al-5 Si-60 Ge (wt%) alloys all of which flowed at 1020°F; these flow temperatures are approximately 50°F below those of commercial alloys. It should be emphasized at this point that we feel that the full potential of these alloys is yet to be realized. That is, further work is necessary to show that the optimum compositions in these systems have been found. Secondly, further minor additions of other elements such as Cu, Zn, Sn, etc., should be investigated since they may result in further flow temperature reductions and/or wettability-flowability improvements. Also, optimum time-temperature relationships for vacuum brazing with these alloys must be established. The silver-bearing ternary and quaternary experimental brazing filler metals were also formulated, melted, and tested on 6061 base metal for wetting and flow properties. It should be emphasized that the Ag-Al-Ge ternary alloy (alloy No. 5, 37.9 Ag-15.9 Al-46.2 Ge, wt%) had a flow temperature of approximately 930°F. This is a significant break-through in aluminum brazing filler metal research since 930°F is in the right range for brazing the base metals 7075 and 2024. From the standpoint of braze metal-base metal interaction and flow, alloy No. 1 (61.5 Ag-25.7 Al-12.8 In, wt%) which brazed at 1075°F also looks very attractive. Earlier in the program			

DD FORM 1473

REPLACES DD FORM 1473, 1 JAN 60, WHICH IS OBSOLETE FOR ARMY USE.

UNCLASSIFIED

Security Classification

UNCLASSIFIED

Security Classification

14. KEY WORDS	LINK A		LINK B		LINK C	
	ROLE	WT	ROLE	WT	ROLE	WT
<p>we found that magnesium-bearing experimental brazing alloys could not be melted using conventional arc-melting techniques. Later, we successfully developed techniques for preparing 10-gram buttons of several magnesium-bearing alloys. Pad tests using the lowest melting binary alloys were run at 930°F on 6061 pads. Flow of the experimental alloys was obtained in all three cases and the results were also very promising.</p> <p>14. KEYWORDS</p> <p>Vacuum brazing Gas quenching Aluminum alloys 6061, 2219, 7075, 2024 Aluminum-silicon-indium systems Aluminum-silicon-germanium system Aluminum-silicon-yttrium system Magnesium-bearing alloys Silver-bearing alloys</p>						