

AD

AMRA TR 67-20



AMRA TR 67-20

AD 654984 SURFACE AREA EFFECTS ON THE OXIDATION KINETICS OF PYROLYTIC GRAPHITE

TECHNICAL REPORT

by

MILTON LEVY

JUNE 1967

DDC
RECORDED
JUL 21 1967
A

Distribution of this document is unlimited

RECEIVED

JUL 26 1967

CFSTI

U. S. ARMY MATERIALS RESEARCH AGENCY

WATERTOWN, MASSACHUSETTS 02172

66

**SURFACE AREA EFFECTS ON THE
OXIDATION KINETICS OF PYROLYTIC GRAPHITE**

Technical Report AMRA TR 67-20

by

Milton Levy

June 1967

D/A Project 1C024401A328

AMCMS Code 5025.11.294

Metals Research for Army Materiel

Subtask 35452

Distribution of this document is unlimited

**U. S. ARMY MATERIALS RESEARCH AGENCY
WATERTOWN, MASSACHUSETTS 02172**

U. S. ARMY MATERIALS RESEARCH AGENCY

SURFACE AREA EFFECTS ON THE OXIDATION KINETICS OF PYROLYTIC GRAPHITE

ABSTRACT

The oxidation kinetics of pyrolytic graphite was studied as a function of temperature, air velocity, and surface area. The transition temperature between chemical and diffusion control may be significantly increased or decreased by decreasing or increasing the surface area of pyrolytic graphite. Kinetic theory calculations showed that the maximum reaction rate in the diffusion-controlled region is 50,000 times the observed rate for specimens having the smallest surface area.

INTRODUCTION

Pyrolytic graphite is a specialized polycrystalline form of graphite deposited from a carbonaceous vapor at temperatures above 3635 F on a suitable substrate, resulting in a buildup of layers having the graphitic structure. According to the supplier, pyrolytic graphite is impermeable to both liquids and gases, has greater strength than normal commercial graphite, and exhibits a greater degree of anisotropy in its thermal and electrical properties than single-crystal natural graphite. The microstructure of pyrolytic graphite is typical of vapor-deposited materials (fibrous in nature) and shows an unusually high degree of preferred orientation.

Figure 1 illustrates the columnar structure of pyrolytic graphite. Localized regions within the grains have different preferred orientations which are due to the fact that the basal planes in the cones are not parallel to the specimen length but are curved instead. The varying degrees of curvature result in a grain structure of conical configuration. This curvature is indicative of strain. Frozen-in stresses exist because of the thermal expansion and contraction that occur in the deposition process. Although this is typical of other graphites it is so to a lesser degree because of the less preferred orientation in normal graphite. Pyrolytic graphite has a high density compared to commercial graphite and has been prepared with measured densities as high as 2.22 grams per cubic centimeter.

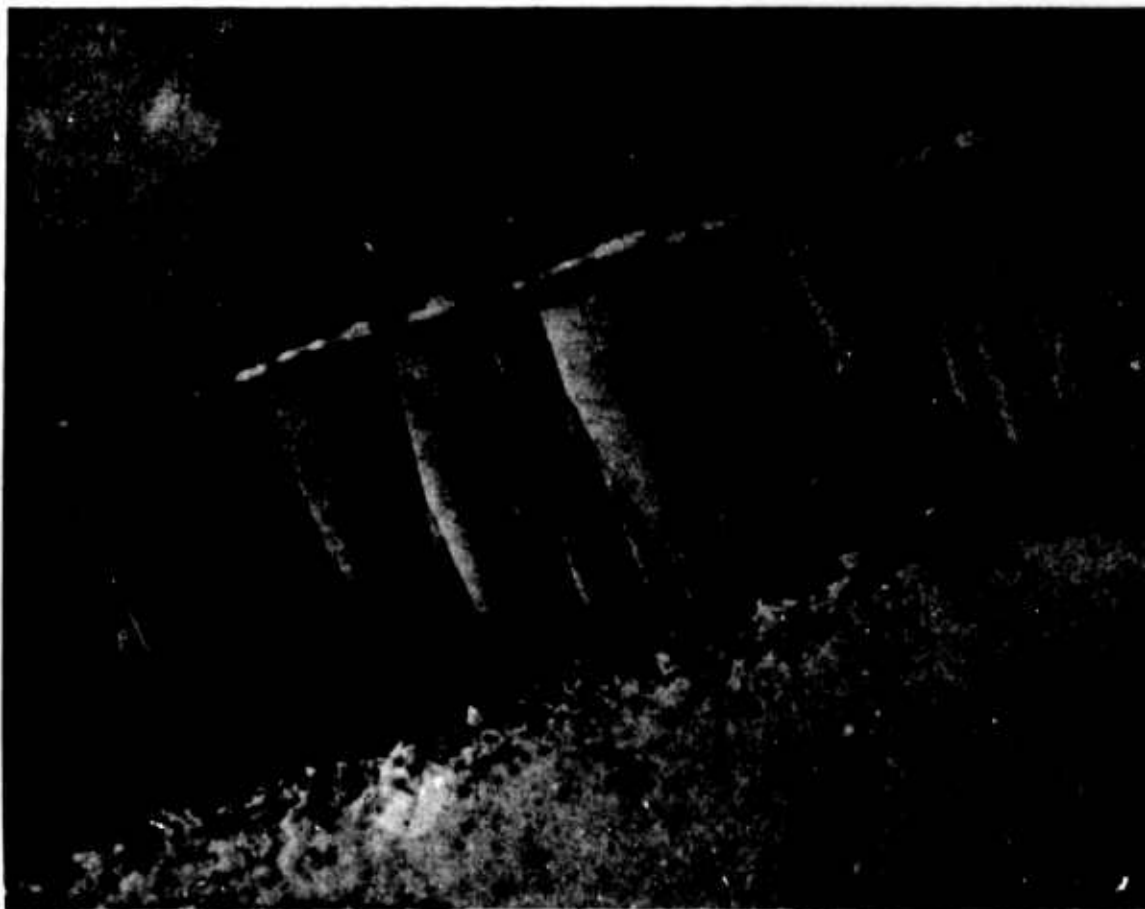


Figure 1. PYROLYTIC GRAPHITE MICROSTRUCTURE. Mag. 100X

19-066-2062/ORD-60

The susceptibility of graphite to oxidation, beginning at comparatively low temperatures and becoming progressively more severe with increasing temperature, limits its usefulness as a high temperature material in spite of its several very favorable properties.

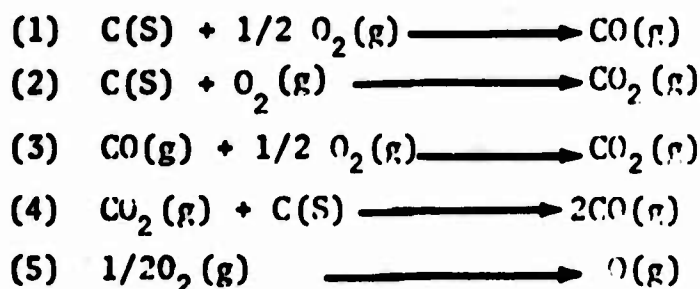
Oxidation may be studied readily by observation of chemical composition, penetration rate, structure of the oxide layer formed, and by the change in weight of the material during oxidation. Graphite is less reactive to oxygen than many metals. However, its oxides are gaseous and provide no protective film or layer. The formation of these gaseous products produce a loss in weight which, when carefully recorded in relation to time, offers a means for studying the rate of oxidation.

Equilibria calculations may be made on several reactions to determine the thermodynamic feasibility of the secondary reactions and the stability of the reaction products.

The pertinent reactions involving graphite, oxygen, carbon dioxide, and carbon monoxide are contained in Table I along with values of the equilibrium constant K_R .

Table I. EQUILIBRIUM DATA FOR REACTIONS OF PYROLYTIC GRAPHITE

Temperature (deg)		$\text{Log}_{10} K_R$				
K	F	(1)	(2)	(3)	(4)	(5)
873	1112	11.27	23.64	12.37	-1.10	-11.725
1073	1472	10.05	19.25	9.20	+0.85	- 8.92
1273	1832	9.20	16.27	7.07	+2.13	- 6.97
1473	2192	8.55	14.04	5.49	+3.06	- 5.56



The equilibrium constants for reactions (1), (2), and (3) show that both carbon dioxide and carbon monoxide are stable to decomposition. Carbon monoxide can be oxidized at all temperatures between 1100 and 2200 F according to reaction (3), whereas the reaction of carbon dioxide with graphite (4) is possible anywhere above 1200 F. The dissociation of oxygen molecules, reaction (5), is not appreciable at all temperatures in Table I.

The overall heterogeneous reaction of O_2 and C may be envisaged as involving the transport of the gaseous reactants to the surface, the reaction on the surface, and the transport of the gaseous products from the surface. Thus, the controlling factors of the reaction would be diffusion or chemical reactivity, depending on which is the slower process.

In an earlier investigation, Levy¹ studied the oxidation of pyrolytic graphite in quiescent air between 1250 and 1850 F. A break in the Arrhenius plot occurred at 1550 F. This break may have been due to a change in controlling mechanism, but could not be ascertained in a quiescent system. Later, Levy and Kong² studied the oxidation kinetics of pyrolytic graphite between 1400 and 1800 F at air velocities of 25 to 100 cm/sec and atmospheric pressure and for a specimen area of 3.024 sq cm. A transition from chemical to diffusion control occurred between 1500 and 1600 F. The existence of a change in mechanism of reaction at approximately 1600 F was reported for normal graphite and carbon by Tu, Davis, and Hottel,³ Kuchta, Kant, and Damon,⁴ Blyholder and Eyring,⁵ and Gulbransen, Andrew, and Brassart.⁶ Gulbransen also found that the transition between chemical and diffusion control depends on pressure, sample size, and the nature of the reaction system. Since these earlier investigators also reported transition temperatures near 1600 F, their reaction system, specimen areas, and oxidation conditions were probably similar. This report presents a study of the effect of specimen surface area on the oxidation kinetics of pyrolytic graphite for a given reaction system.

APPARATUS AND EXPERIMENTAL PROCEDURE

An automatic weighing and recording reaction system (Aminco Thermograv) was used for obtaining the rates of oxidation of pyrolytic graphite. The weight sensitivity of the system was 0.2 mg. The furnace temperature was regulated by a calibrated chromel-alumel furnace thermocouple which controlled the power input to the furnace. An additional calibrated chromel-alumel thermocouple placed adjacent to the sample was used to maintain the desired temperature within ± 3.5 F during the oxidation runs. This assured that the difference between the temperature of the sample and the furnace would be minimized as much as possible under the experimental conditions.

Air was introduced at the bottom of the reaction chamber, dried with Drierite, and measured with flow meters.

According to the supplier (Raytheon Co., Waltham, Mass.), the pyrolytic graphite was deposited from methane on a synthetic graphite substrate at 3812 F and had a density of 2.20 g/cc. Specimens had surface areas of 6.27 sq cm, 0.927 sq cm, and 0.394 sq cm, were rinsed with ethyl alcohol, and dried to constant weight.

The oxidation of pyrolytic graphite was studied as a function of time, temperature, air velocity, and surface area. Runs were made at 1400, 1500, 1600, 1700, and 1800 F at air flow rates of 25, 50, 75 and 100 cm/sec for each temperature and surface area.

RESULTS AND DISCUSSION

A plot of reaction rate versus $1/T$ for four air velocities and a specimen surface area of 0.927 sq cm is shown in Figure 2. Limiting tangents at

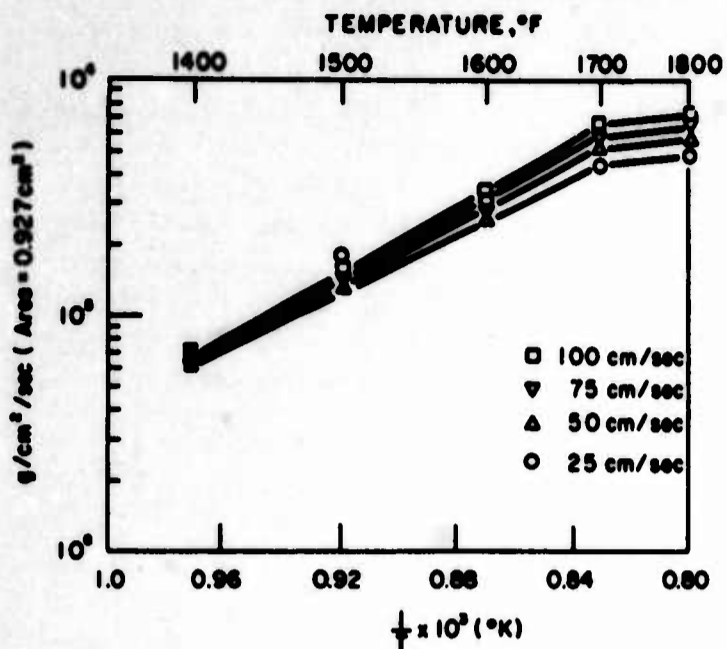


Figure 2. EFFECT OF TEMPERATURE ON REACTION RATE OF PYROLYTIC GRAPHITE (Surface Area 0.927 sq cm)
19-066-438/AMC-65

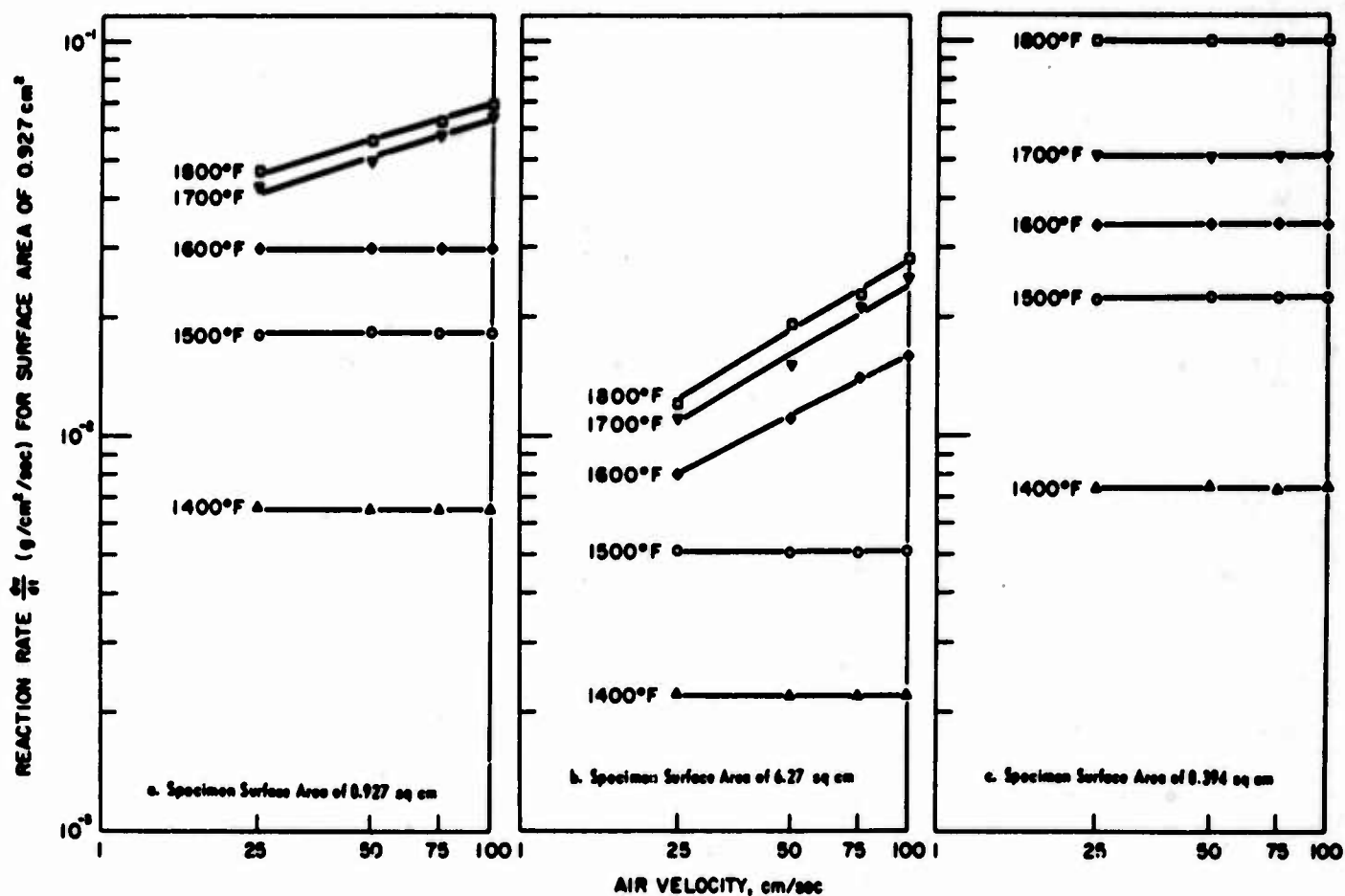
arithmic. Below 1700 F the curves are parallel to the velocity axis, showing a lack of dependence of rate on air velocity because of the predominant effect of chemical resistance at the surface. The slopes of the isotherms increase at 1700 F and above, where the rate is substantially independent of temperature. The substantial parallelism of the curves for this temperature region indicates that chemical resistance appears to have no importance between 1700 and 1800 F when the combustion rate is defined as containing two additive terms, the first of which corresponds to a diffusional resistance and the second to a chemical resistance.³ If the reaction is in the diffusion-controlled region, one would expect the reaction rate to increase with increasing air velocity, which was the case at 1700 and 1800 F.

Figures 3b and 3c show similar curves for specimens having surface areas of 6.27 sq cm and 0.394 sq cm. By increasing the specimen surface area, the transition temperature between chemical and diffusion control decreases to 1600 F. Conversely, decreasing the specimen surface area increases the transition temperature to above 1800 F.

Figure 4 shows the effect of surface area on reaction rates at temperatures of 1400 to 1800 F and an air velocity of 25 cm/sec. It is important to note that the reaction rate is the highest for the small surface areas at the same temperature. This indicates that surface area itself has an effect on reaction rate independently of other variables. In other words, for the same air velocity and temperature a sample having a smaller surface area oxidizes more rapidly than one having a larger surface area. In the region of the smallest area, the curves become steeper and at 1800 F the curve was very steep, indicating an enormous reaction rate for a very small area. The effect of increasing air velocity on reaction rate is evidenced by a shifting of the curves upward for each increase in air velocity. For the reaction

the longer exposure times were employed for the determination of reaction rate constants. The temperature of oxidation was then at constant value for each exposure. The initial portion of the curves between 1400 and 1700 F clearly represents a region in which chemical resistance is controlling, since the effect of velocity is overshadowed by that of temperature. For this region an energy of activation of 38 kcal/mol was calculated. At 1700 F and above, a change is observed in oxidation kinetics at all gas velocities. In this region an energy of activation of 5 kcal/mol was calculated.

The effect of velocity for several temperatures and a specimen surface area of 0.927 sq cm is shown in Figure 3a, both scales of which are log-



407/65

406/65

405/65

Figure 3. EFFECT OF AIR VELOCITY ON REACTION RATE FOR SEVERAL TEMPERATURES

rates at higher velocities, the slopes of the curves were similar; however, the reaction rate curves begin to rise sooner than for the lower velocities.

Studies on the diffusion-controlled oxidation of graphite are more meaningful when the rates of reaction are related to the chemical-controlled reaction and to the values calculated from kinetic theory. Table II contains the number of impacts (n) of oxygen molecules with a square centimeter of surface area per second at temperatures of 1400 to 1800 F and atmospheric pressure, calculated from kinetic theory. If CO is formed, each collision results in reaction with two atoms of C. Therefore, the theoretical value

Table II. MOLECULAR COLLISION DATA CALCULATED FROM KINETIC THEORY

Temperature (deg)		n (number of collisions of oxygen/sq cm/sec)	dn/dt (atoms C/sq cm/sec)
F	K		
1400	1033	1.47×10^{23}	2.9×10^{23}
1500	1089	1.44×10^{23}	2.9×10^{23}
1600	1144	1.40×10^{23}	2.8×10^{23}
1700	1200	1.37×10^{23}	2.7×10^{23}
1800	1255	1.33×10^{23}	2.7×10^{23}

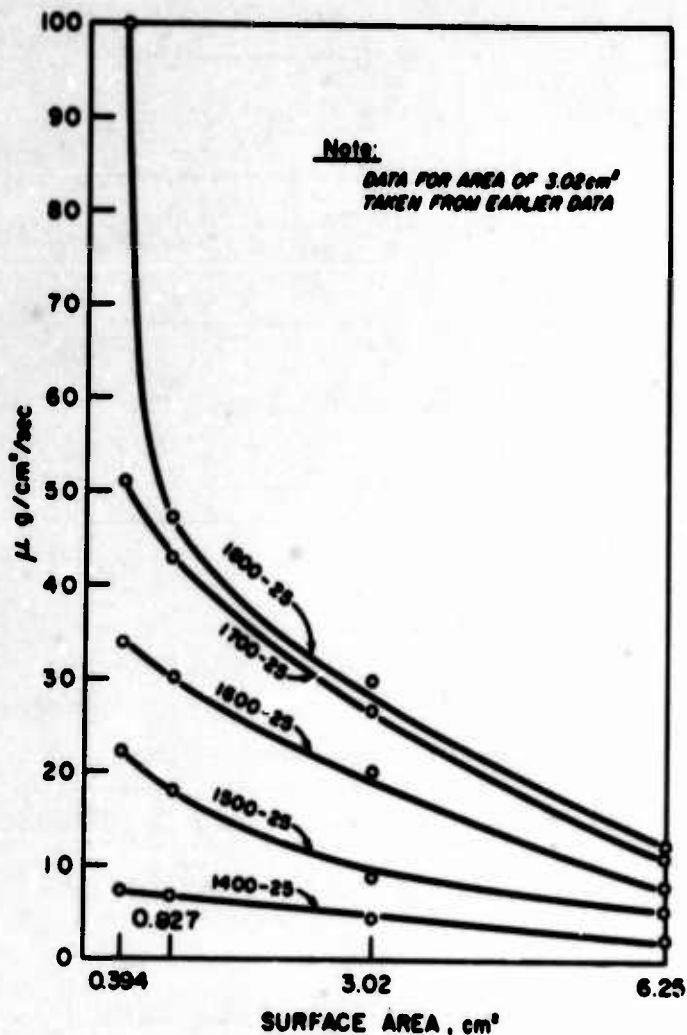


Figure 4. EFFECT OF SURFACE AREA ON REACTION RATES AT TEMPERATURES OF 1400 TO 1800 F AND AN AIR VELOCITY OF 25 cm/sec

19-066-441/AMC-65

of dn/dt , expressed as atoms of carbon per square centimeter per second, will be twice the number of collisions per square centimeter per second. The values for dn/dt are also contained in Table II.

Table III shows the effect of surface area on the rates of oxidation which are expressed as dw/dt (g/sq cm/sec) and dn/dt (atoms C/sq cm/sec) calculated by using Avogadro's number (for air velocity of 25 cm/sec). The sample area was varied by a factor of 16 to determine the transition between chemical and diffusion control. Since the value of dn/dt increased on reducing the specimen size, the reaction is still under diffusion control for the smaller sample. Reaction rates up to 5.00×10^{18} atoms C/sq cm/sec were measured.

Figure 5 contains a plot of $\log dn/dt$ versus $1/T$ (K) at an air velocity of 100 cm/sec for samples having surface areas of 0.394, 0.927, and 6.27 sq cm. The linear portions of the curves represent chemical-controlled oxidation with an energy of activation of 38 Kcal/mol. Reaction rates to the right of these linear portions represent diffusion-controlled oxidation

Table III. EFFECT OF SURFACE AREA ON RATES OF OXIDATION
Air Velocity - 25 cm/sec

Temp. (deg F)	Sample Area (sq cm)	dn/dt (atoms C/sq cm/sec)	dw/dt (g/sq cm/sec)
1400	6.270	1.10×10^{17}	2.2×10^{-6}
1400	0.927	3.31×10^{17}	6.6×10^{-6}
1400	0.394	3.66×10^{17}	7.3×10^{-6}
1500	6.270	2.56×10^{17}	5.1×10^{-6}
1500	0.927	9.04×10^{17}	1.8×10^{-5}
1500	0.394	1.10×10^{18}	2.2×10^{-5}
1600	6.270	4.02×10^{17}	8.0×10^{-6}
1600	0.927	1.51×10^{18}	3.0×10^{-5}
1600	0.394	1.71×10^{18}	3.4×10^{-5}
1700	6.270	5.54×10^{17}	1.1×10^{-5}
1700	0.927	2.16×10^{18}	4.3×10^{-5}
1700	0.394	2.56×10^{18}	5.1×10^{-5}
1800	6.270	6.025×10^{17}	1.2×10^{-5}
1800	0.927	2.36×10^{18}	4.7×10^{-5}
1800	0.394	5.00×10^{18}	1.0×10^{-4}

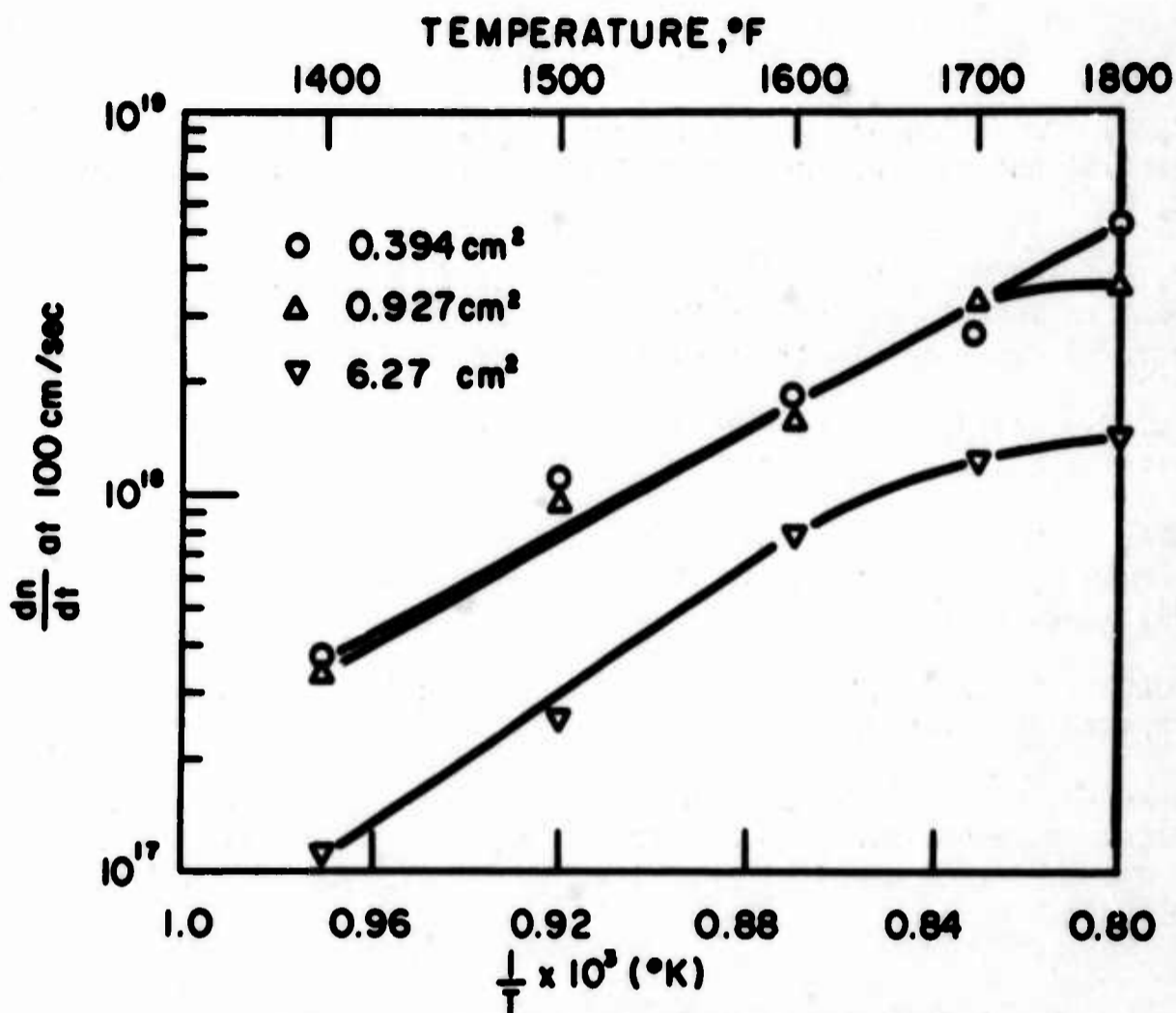


Figure 5. EFFECT OF SURFACE AREA ON REACTION RATES AT SEVERAL TEMPERATURES AND AN AIR VELOCITY OF 100 cm/sec

19-066-440/AMC-65

where temperature has a minor effect on the reaction rate. The important variable is the surface area. The maximum measured rate of oxidation for a 0.394 sq cm sample at a furnace temperature of 1800 F was 5.00×10^{18} atom C/sq cm/sec. Kinetic theory calculations contained in Table II indicate a maximum reaction rate of 2.7×10^{23} atoms C/sq cm/sec at 1800 F. This value is 50,000 times the observed value for a 0.394 sq cm specimen area.

The transition temperature between chemical and diffusion control depends on the specimen area and the nature of the reaction. By decreasing the specimen area it was possible to increase the transition temperature from 1600 F to above 1800 F.

LITERATURE CITED

1. LEVY, M. *Oxidation of Pyrolytic Graphite in Air between 1250 and 1850 F.* Industrial Engineering Chemistry, Product Research and Development, v. 1, 1962, p. 19.
2. LEVY, M., and WONG, P. *Oxidation of Pyrolytic Graphite at Temperature of 1400 to 1800 F, and at Air Velocities of 25 to 100 Centimeters per Second.* Journal of Electrochemical Society, v. III, no. 9, September 1964.
3. TU, C. M., DAVIS, H., and HOTTEL, M. C. *Combustion Rate of Carbon.* Industrial Engineering Chemistry, v. 26, 1934, p. 749.
4. KUCHITA, J. M., KANT, A., and DAMON, G. H. *Combustion of Carbon in High Temperature High Velocity Air Streams.* Industrial Engineering Chemistry, v. 44, 1952, p. 1559.
5. BLYHOLDER, G., and EYRING, H. *Kinetics of Graphite Oxidation.* Journal of Physical Chemistry, v. 61, 1957, p. 682.
6. GULBRANSEN, E. A., ANDREW, K. F., and BRASSART, F. A. *The Oxidation of Graphite at Temperatures at 600 to 1500 C, and at Pressures of 2 to 76 Torr of Oxygen.* Journal of the Electrochemical Society, v. 110, no. 6, June 1963.

U. S. ARMY MATERIALS RESEARCH AGENCY
WATERTOWN, MASSACHUSETTS 02172

TECHNICAL REPORT DISTRIBUTION

Report No.: AMRA TR 67-20 Title: Surface Area Effects on the Oxidation
June 1967 Kinetics of Pyrolytic Graphite

No. of Copies	To
1	Office of the Director, Defense Research and Engineering, The Pentagon, Washington, D. C. 20301
20	Commander, Defense Documentation Center, Cameron Station, Building 5, 5010 Duke Street, Alexandria, Virginia 22314
1	Defense Metals Information Center, Battelle Memorial Institute, Columbus, Ohio 43201
1	Chemical Propulsion Information Agency, Applied Physics Laboratory, The Johns Hopkins University, 8621 Georgia Avenue, Silver Spring, Maryland 20910
	Chief of Research and Development, Department of the Army, Washington, D. C. 20310
2	ATTN: Physical and Engineering Sciences Division
	Commanding Officer, Army Research Office (Durham), Box CN, Duke Station, Durham, North Carolina 27706
1	ATTN: Information Processing Office
	Commanding General, U. S. Army Materiel Command, Washington, D. C. 20315
1	ATTN: AMCRD-RC-M
	Commanding General, Deseret Test Center, Fort Douglas, Utah 84113
1	ATTN: Technical Information Office
	Commanding General, U. S. Army Electronics Command, Fort Monmouth, New Jersey 07703
2	ATTN: AMSEL-RD-MAT
	Commanding General, U. S. Army Missile Command, Redstone Arsenal, Alabama 35809
1	ATTN: Technical Library
1	Mr. C. Martens
	Commanding General, U. S. Army Munitions Command, Dover, New Jersey 07801
1	ATTN: Technical Library

UNCLASSIFIED

Security Classification

DOCUMENT CONTROL DATA - R&D		
<i>(Security classification of title, body of abstract and indexing annotation must be entered when the overall report is classified)</i>		
1. ORIGINATING ACTIVITY (Corporate author) U. S. Army Materials Research Agency Watertown, Massachusetts 02172		2a. REPORT SECURITY CLASSIFICATION Unclassified
		2b. GROUP
3. REPORT TITLE Surface Area Effects on the Oxidation Kinetics of Pyrolytic Graphite		
4. DESCRIPTIVE NOTES (Type of report and inclusive dates)		
5. AUTHOR(S) (Last name, first name, initial) Levy, Milton		
6. REPORT DATE June 1967	7a. TOTAL NO. OF PAGES 8	7b. NO. OF REFS 6
8a. CONTRACT OR GRANT NO. b. PROJECT NO. D/A 1C024401A328 c. AMCMS Code 5025.11.294 d. Subtask 35452	9a. ORIGINATOR'S REPORT NUMBER(S) AMRA 67-20	
9b. OTHER REPORT NO(S) (Any other numbers that may be assigned this report)		
10. AVAILABILITY/LIMITATION NOTICES Distribution of this document is unlimited.		
11. SUPPLEMENTARY NOTES ✓	12. SPONSORING MILITARY ACTIVITY U. S. Army Materiel Command Washington, D. C. 20315	
13. ABSTRACT The oxidation kinetics of pyrolytic graphite was studied as a function of temperature, air velocity, and surface area. The transition temperature between chemical and diffusion control may be significantly increased or decreased by decreasing or increasing the surface area of pyrolytic graphite. Kinetic theory calculations showed that the maximum reaction rate in the diffusion-controlled region is 50,000 times the observed rate for specimens having the smallest surface area. (Author)		

DD FORM 1473
1 JAN 64

UNCLASSIFIED

Security Classification

14. KEY WORDS	LINK A		LINK B		LINK C	
	ROLE	WT	ROLE	WT	ROLE	WT
Chemical reactions Combustion Surface area Carbon compounds Physical chemistry Ceramic materials Refractory materials Graphite Corrosion Kinetic theory Transition temperature						

INSTRUCTIONS

1. **ORIGINATING ACTIVITY:** Enter the name and address of the contractor, subcontractor, grantee, Department of Defense activity or other organization (*corporate author*) issuing the report.
- 2a. **REPORT SECURITY CLASSIFICATION:** Enter the overall security classification of the report. Indicate whether "Restricted Data" is included. Marking is to be in accordance with appropriate security regulations.
- 2b. **GROUP:** Automatic downgrading is specified in DoD Directive 5200.10 and Armed Forces Industrial Manual. Enter the group number. Also, when applicable, show that optional markings have been used for Group 3 and Group 4 as authorized.
3. **REPORT TITLE:** Enter the complete report title in all capital letters. Titles in all cases should be unclassified. If a meaningful title cannot be selected without classification, show title classification in all capitals in parenthesis immediately following the title.
4. **DESCRIPTIVE NOTES:** If appropriate, enter the type of report, e.g., interim, progress, summary, annual, or final. Give the inclusive dates when a specific reporting period is covered.
5. **AUTHOR(S):** Enter the name(s) of author(s) as shown on or in the report. Enter last name, first name, middle initial. If military, show rank and branch of service. The name of the principal author is an absolute minimum requirement.
6. **REPORT DATE:** Enter the date of the report as day, month, year; or month, year. If more than one date appears on the report, use date of publication.
- 7a. **TOTAL NUMBER OF PAGES:** The total page count should follow normal pagination procedures, i.e., enter the number of pages containing information.
- 7b. **NUMBER OF REFERENCES:** Enter the total number of references cited in the report.
- 8a. **CONTRACT OR GRANT NUMBER:** If appropriate, enter the applicable number of the contract or grant under which the report was written.
- 8b, 8c, & 8d. **PROJECT NUMBER:** Enter the appropriate military department identification, such as project number, subproject number, system numbers, task number, etc.
- 9a. **ORIGINATOR'S REPORT NUMBER(S):** Enter the official report number by which the document will be identified and controlled by the originating activity. This number must be unique to this report.
- 9b. **OTHER REPORT NUMBER(S):** If the report has been assigned any other report numbers (*either by the originator or by the sponsor*), also enter this number(s).

10. **AVAILABILITY/LIMITATION NOTICES:** Enter any limitations on further dissemination of the report, other than those imposed by security classification, using standard statements such as:

- (1) "Qualified requesters may obtain copies of this report from DDC."
- (2) "Foreign announcement and dissemination of this report by DDC is not authorized."
- (3) "U. S. Government agencies may obtain copies of this report directly from DDC. Other qualified DDC users shall request through _____."
- (4) "U. S. military agencies may obtain copies of this report directly from DDC. Other qualified users shall request through _____."
- (5) "All distribution of this report is controlled. Qualified DDC users shall request through _____."

If the report has been furnished to the Office of Technical Services, Department of Commerce, for sale to the public, indicate this fact and enter the price, if known.

11. **SUPPLEMENTARY NOTES:** Use for additional explanatory notes.

12. **SPONSORING MILITARY ACTIVITY:** Enter the name of the departmental project office or laboratory sponsoring (*paying for*) the research and development. Include address.

13. **ABSTRACT:** Enter an abstract giving a brief and factual summary of the document indicative of the report, even though it may also appear elsewhere in the body of the technical report. If additional space is required, a continuation sheet shall be attached.

It is highly desirable that the abstract of classified reports be unclassified. Each paragraph of the abstract shall end with an indication of the military security classification of the information in the paragraph, represented as (TS), (S), (C), or (U).

There is no limitation on the length of the abstract. However, the suggested length is from 150 to 225 words.

14. **KEY WORDS:** Key words are technically meaningful terms or short phrases that characterize a report and may be used as index entries for cataloging the report. Key words must be selected so that no security classification is required. Identifiers, such as equipment model designation, trade name, military project code name, geographic location, may be used as key words but will be followed by an indication of technical context. The assignment of links, rules, and weights is optional.