

AD 654789  
AD

TECHNICAL REPORT  
67-54-GP

**GUIDE FOR ESTIMATING MAXIMUM ANCHOR  
LOADS ON AIR-SUPPORTED STRUCTURES**

by

Thomas C. Strain

and

Ronald F. Tumeinski

RECEIVED

JUL 21 1967

CFSTI

March 1967

JUL 16 1967

UNITED STATES ARMY  
NATICK LABORATORIES  
Natick, Massachusetts 01760



General Equipment & Packaging Laboratory

Distribution of this report  
is unlimited. Release to  
CFSTI is authorized.

AD \_\_\_\_\_

TECHNICAL REPORT  
67-54-GP

GUIDE FOR ESTIMATING MAXIMUM  
ANCHOR LCADS ON AIR-SUPPORTED STRUCTURES

by

Thomas C. Strain  
and  
Ronald F. Tumeinski

Project No. 1M642101D503

March 1967

General Equipment & Packaging Laboratory  
U. S. ARMY NATICK LABORATORIES  
Natick, Massachusetts

## FOREWORD

This report was prepared by the Shelters Division, General Equipment and Packaging Laboratory, U. S. Army Natick Laboratories, Natick, Mass. The work was performed under Exploratory Development Project 14642101D503, "Tents and Organization Field Equipment," Task 01, Studies in the Structural Mechanics of Tentage, Work Unit 003, Review of Design Manual.

Its contents are based on the technical data contained in the "Design Manual For Ground-Mounted, Air-Supported Structures," prepared by the Hayes International Corp. Birmingham, Alabama, for N Labs under contract DA19-129-AMC-129.

The intent of this report is to provide the design engineer with a complete, concise guide for planning the ground support and anchoring devices required for stabilizing air-supported structures.

The authors wish to acknowledge the guidance, encouragement and support of Mr. C. J. Monego of the Shelters Division in the preparation of this work.

EDWARD A. NEBESKY, Ph. D.  
Acting Director  
General Equipment & Packaging Laboratory

APPROVED:

DALE H. SIELING, Ph.D.  
Scientific Director

W. M. MANTZ  
Brigadier General, USA  
Commanding

## TABLE OF CONTENTS

|   | <u>Page</u> |
|---|-------------|
| List of Figures                           | iv          |
| Symbols                                   | v           |
| Abstract                                  | vi          |
| 1. Introduction                           | 1           |
| 2. Anchor Load Calculations               | 2           |
| a. Forces Creating Anchor Loads           | 2           |
| b. Definition of Anchor Load Coefficients | 8           |
| c. Formulas for Calculating Anchor Loads  | 9           |
| d. Sample Calculations                    | 13          |

## LIST OF FIGURES

|  | <u>Page</u> |
|--|-------------|
| 1. Single-Wall, Spherical  | 3           |
| 2. Single-Wall, Cylindrical  | 3           |
| 3. Double-Wall, Cylindrical  | 3           |
| 4. Variation of Impact Pressure with Air Speed,<br>Sea Level Standard Atmosphere       | 6           |
| 5. Impact Pressure Correction Factor, $k_p$ , Variation with<br>Altitude & Temperature | 7           |
| 6. Variation of Anchor Load Coefficient with Shape<br>(Spherical)                      | 10          |
| 7. Variation of Base Anchor Load Coefficient with<br>Shape                             | 11          |
| 8. Variation of Guy Line Load Coefficient with Shape                                   | 12          |
| 9. Single-Wall Sphere  | 13          |
| 10. Single-Wall Cylinder   | 15          |
| 11. D-W Cylinder   | 17          |

## SYMBOLS

|          |   |
|----------|---|
| $A_f$    | Floor area, sq ft   |
| $A_p$    | Planform area (max. horizontal cross sectional area), sq ft |
| AL       | Anchor Load, lbs  |
| $AL_e$   | Anchor load due to internal pressure, lbs                   |
| BL       | Base anchor load, lbs                                       |
| $C_{AL}$ | Anchor load coefficient, single-wall                        |
| $C_{BL}$ | Base anchor load coefficient, double-wall                   |
| $C_{GL}$ | Guyline anchor load coefficient, double-wall                |
| a        | Reference length - tent diameter, ft                        |
| GL       | Guyline anchor load, lb                                     |
| h        | Tent height, ft   |
| $l_t$    | Length of tent, ft  |
| $P_{AL}$ | Total anchor load, lbs                                      |
| $P_e$    | Shelter enclosure pressure, lb/sq ft                        |
| q        | Dynamic (impact) pressure, lb/sq ft                         |
| r        | Tent radius, ft   |
| U        | Velocity, ft/sec  |
| W        | Tent width, ft  |
| $\rho$   | Density of air, Slugs/cu ft                                 |

## ABSTRACT

This report contains all the graphs, tables, mathematical formulas, and design data necessary to estimate the maximum loads on anchoring systems used with air-supported shelters subjected to winds up to 105 mph. The design data are presented in non-dimension coefficient form. Sample problems are included to illustrate the use of the data and their application to both single and double-wall structures.

GUIDE FOR ESTIMATING MAXIMUM ANCHOR LOADS  
ON AIR-SUPPORTED STRUCTURES

1. Introduction

In October 1950, a Design Manual for Spherical Air-Supported Radomes was published as Cornell Aeronautical Laboratory Report No. UB-664-D-1. After its publication, the radome was adopted as standard by the military on many ground-mounted radar installations. Hundreds were built and considerable experience with their design and operations had been gained in the field.

In March 1956, the Cornell Design Manual was revised to incorporate information accumulated since its original publication. This revised manual, is designated as: "Design Manual for Spherical Air-Supported Radomes (Revised) Report No. UB-909-D-2."

Air-supported shelters were being developed for the military, varying in shape from spherical radomes to cylindrical structures with spherical or flat ends. Although the spherically shaped radome had been subjected to aerodynamic testing, no studies were made for other shapes. The design of other configurations was based on fragmentary information available from various sources. The need for reliable design information was obvious.

To obtain aerodynamic data on flexible, cylindrical, air-supported structures, a limited wind tunnel study was conducted at the Massachusetts Institute of Technology on a one-tenth scale model of the Army's standard, tent, air-supported, single-wall, Nike-Hercules, above-ground launcher. As a result, a final report was prepared by Raffi J. Bicknell entitled, "Wind Tunnel Test on an Air-Supported Tent Model" Report No. 1024, Department of Aeronautics and Astronautics, Wright Brothers Wind Tunnel, MIT, June 1963.

Beginning in July 1963, the U.S. Army Natick Laboratories contracted a program with the Hayes International Corp. for extensive wind tunnel studies on spherical and cylindrical single-wall\* structures and cylindrical double-wall\*\* structures.

---

\*Single-Wall - A flexible structure consisting of a single membrane usually in the shape of a sphere or cylinder. It is supported by a continuous flow of high volume, low pressure air enclosed between the membrane and mounting surface.

\*\*Double-Wall - A flexible structure consisting of two membranes usually in the shape of a half cylinder. The two membranes form an envelope containing air, which resembles an air mattress bent into a "U" shape. The structure is supported by a flow of low volume, high-pressure air.



This program consisted of analytical and wind tunnel studies on 26 scale model air-supported structures. This contract resulted in a design manual entitled, "Design Manual for Ground-Mounted Air-Supported Structures." It provides design criteria to facilitate engineering of aerodynamically stable air-supported structures. Included in the design manual are data for estimating maximum anchor loads to be expected in winds up to 106mph. The contents of the present report are based on the data contained in the Hayes report. It is prepared for the convenience of engineers whose primary interest is the anchoring of military shelters.

## 2. Anchor Load Calculations

### a. Forces Creating Anchor Loads

Fabric shelters subjected to winds of high velocity can experience aerodynamic forces of considerable magnitude. In order to estimate the magnitude of these forces, twenty six single and double-wall shelter models were tested in a wind tunnel with winds up to 105 miles per hour. The aerodynamic force data obtained, were reduced to non-dimensional coefficient form by dividing the force data by a reference area and the dynamic pressure.

Several very important facts should be emphasized at this time. The aerodynamic force data used here were maximum values so that the anchor loads calculated by techniques in this report will be maximum loads. The second fact is that no attempt has been made to ascertain the effect of wind gusts. The impact pressure used is for a wind of constant velocity.

The tent planform area  $A_p$  was selected as the reference area and is defined as the maximum cross sectional area in a horizontal plane. Planform areas are given by the following expressions for common tent types:

Sphere

$$A_p = \pi \left(\frac{W}{2}\right)^2$$

Cylinder with spherical ends:

$$A_p = \pi \left(\frac{W}{2}\right)^2 - W \left(1 - \frac{W}{h}\right)$$

Figures 1 through 3 are examples of air-supported structures.

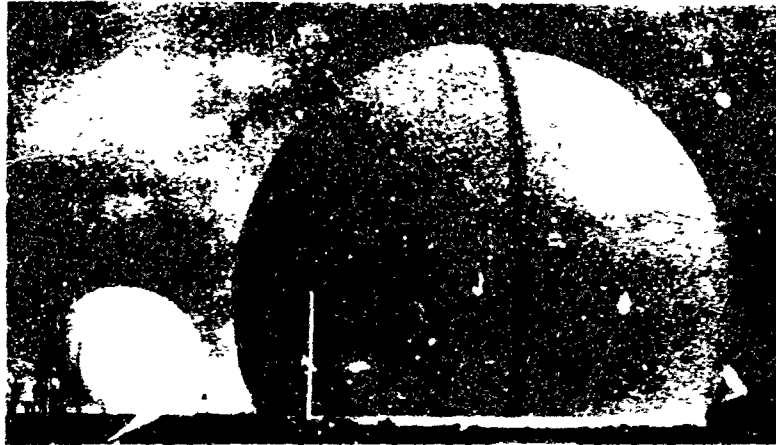


Figure 1. Single-Wall, Spherical



Figure 2. Single-Wall, Cylindrical

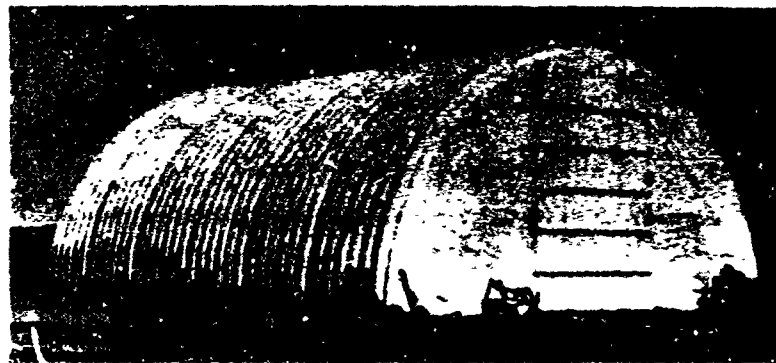


Figure 3. Double-Wall, Cylindrical

Cylinder with flat ends:

$$A_p = W l_h$$

where:

$$A_p = \text{planform area, sq ft}$$

$$W = \text{width of tent, ft}$$

$$l_h = \text{length of tent, ft}$$

The planform areas for tents with radii up to 80 feet are shown in Table I.

The dynamic pressure,  $q$ , due to wind velocity is defined by the following expression:

$$q = \frac{\rho U^2}{2}$$

where:

$$q = \text{dynamic pressure, lb/sq ft}$$

$$U = \text{wind velocity, ft/sec}$$

$$\rho = \text{density of air in (slugs/cu ft), } \frac{1 \text{ b} - \text{sec}^2}{\text{ft}^4}$$

$$= .00238 \text{ for a standard day at sea level}$$

The variation of impact pressure with wind speed at sea level and 59°F is shown in Figure 4. An impact pressure correction factor as a function of pressure altitude and temperature is shown in Figure 5.

In single wall shelters, the lift due to internal pressure must be added to the aerodynamic lift. The load on the anchors due to internal pressure can be calculated from the following expression:

$$AL_e = P_e A_f$$

$$AL_e = \text{anchor load due to internal pressure, lbs}$$

Table I  
TENT PLANFORM AREA,  $A_p$   
SPHERICAL AND CYLINDRICAL TENTS WITH HEMISPHERICAL ENDS

| Tent Radius<br>r Ft. | Tent Planform Area, $A_p$ , Sq. Ft. |                              |                              |                              |
|----------------------|-------------------------------------|------------------------------|------------------------------|------------------------------|
|                      | Spherical                           | Cylindrical<br>$1/2 = W/l_h$ | Cylindrical<br>$1/3 = W/l_h$ | Cylindrical<br>$1/4 = W/l_h$ |
| 10                   | 314                                 | 714                          | 1114                         | 1514                         |
| 12                   | 452                                 | 1028                         | 1604                         | 2180                         |
| 14                   | 615                                 | 1399                         | 2183                         | 2967                         |
| 16                   | 804                                 | 1828                         | 2852                         | 3876                         |
| 18                   | 1017                                | 2313                         | 3609                         | 4905                         |
| 20                   | 1256                                | 2856                         | 4456                         | 6056                         |
| 22                   | 1520                                | 3456                         | 5392                         | 7328                         |
| 24                   | 1809                                | 4113                         | 6417                         | 8721                         |
| 26                   | 2123                                | 4827                         | 7531                         | 10235                        |
| 28                   | 2463                                | 5599                         | 8735                         | 11871                        |
| 30                   | 2827                                | 6427                         | 10027                        | 13627                        |
| 32                   | 3216                                | 7312                         | 11409                        | 15505                        |
| 34                   | 3631                                | 8255                         | 12879                        | 17503                        |
| 36                   | 4071                                | 9255                         | 14439                        | 19623                        |
| 38                   | 4536                                | 10312                        | 16088                        | 21864                        |
| 40                   | 5026                                | 11426                        | 17826                        | 24226                        |
| 42                   | 5541                                | 12597                        | 19653                        | 26709                        |
| 44                   | 6082                                | 13826                        | 21570                        | 29314                        |
| 46                   | 6647                                | 15111                        | 23575                        | 32039                        |
| 48                   | 7238                                | 16454                        | 25670                        | 34886                        |
| 50                   | 7853                                | 17854                        | 27854                        | 37854                        |
| 52                   | 8494                                | 19310                        | 30126                        | 40942                        |
| 54                   | 9160                                | 20824                        | 32488                        | 44152                        |
| 56                   | 9852                                | 22396                        | 34940                        | 47484                        |
| 58                   | 10568                               | 24024                        | 37480                        | 50936                        |
| 60                   | 11309                               | 25709                        | 40109                        | 54509                        |
| 62                   | 12076                               | 27452                        | 42828                        | 58204                        |
| 64                   | 12868                               | 29252                        | 45636                        | 62020                        |
| 66                   | 13684                               | 31108                        | 48532                        | 65956                        |
| 68                   | 14526                               | 33022                        | 51518                        | 70014                        |
| 70                   | 15393                               | 34993                        | 54593                        | 74193                        |
| 72                   | 16286                               | 37022                        | 57758                        | 78494                        |
| 74                   | 17203                               | 39107                        | 61011                        | 82915                        |
| 76                   | 18145                               | 41249                        | 64353                        | 87457                        |
| 78                   | 19113                               | 43449                        | 67785                        | 92121                        |
| 80                   | 20106                               | 45706                        | 71306                        | 96906                        |

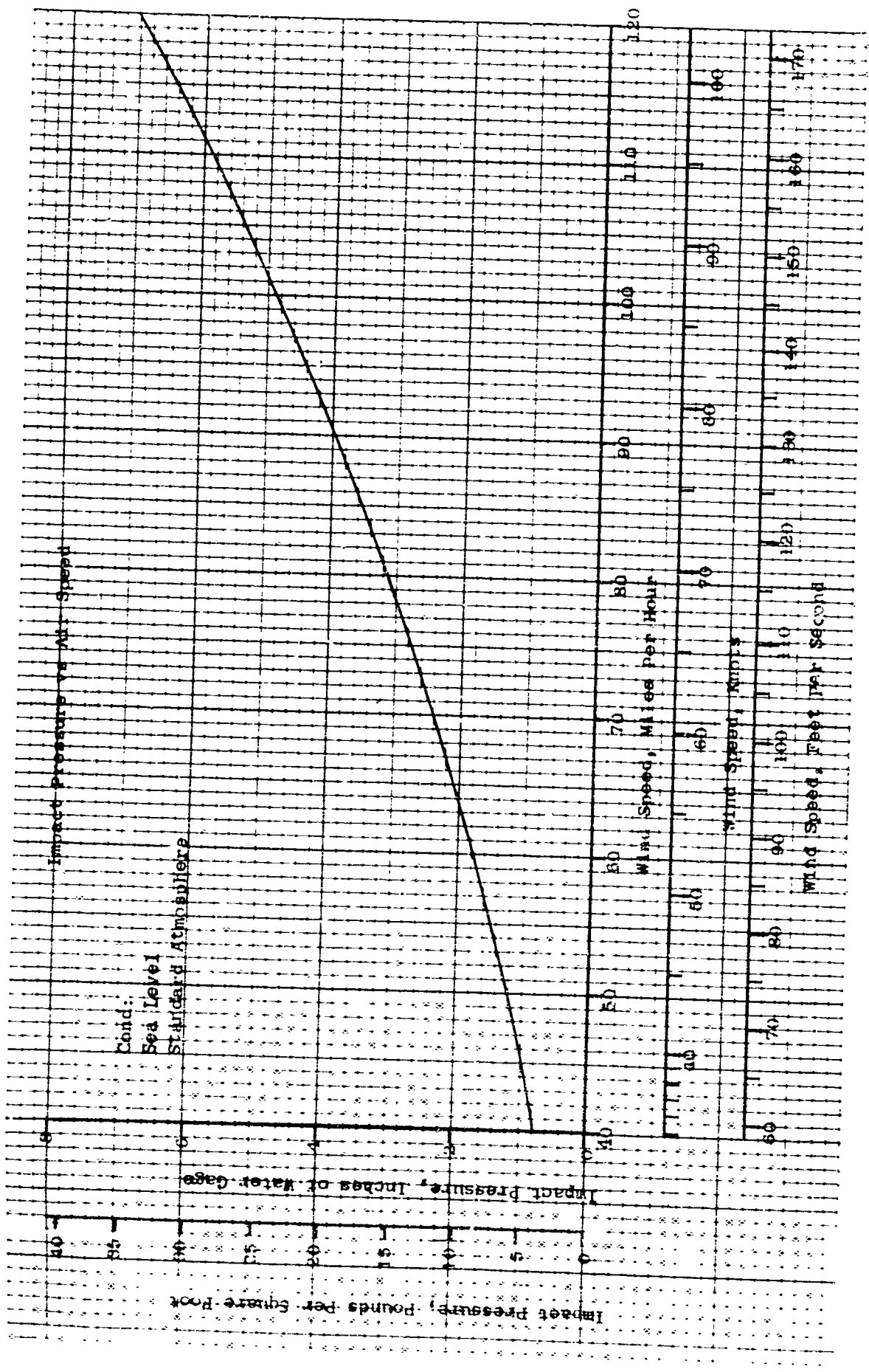


Figure 4. Variation of Impact Pressure with Air Speed, Sea Level Standard Atmosphere

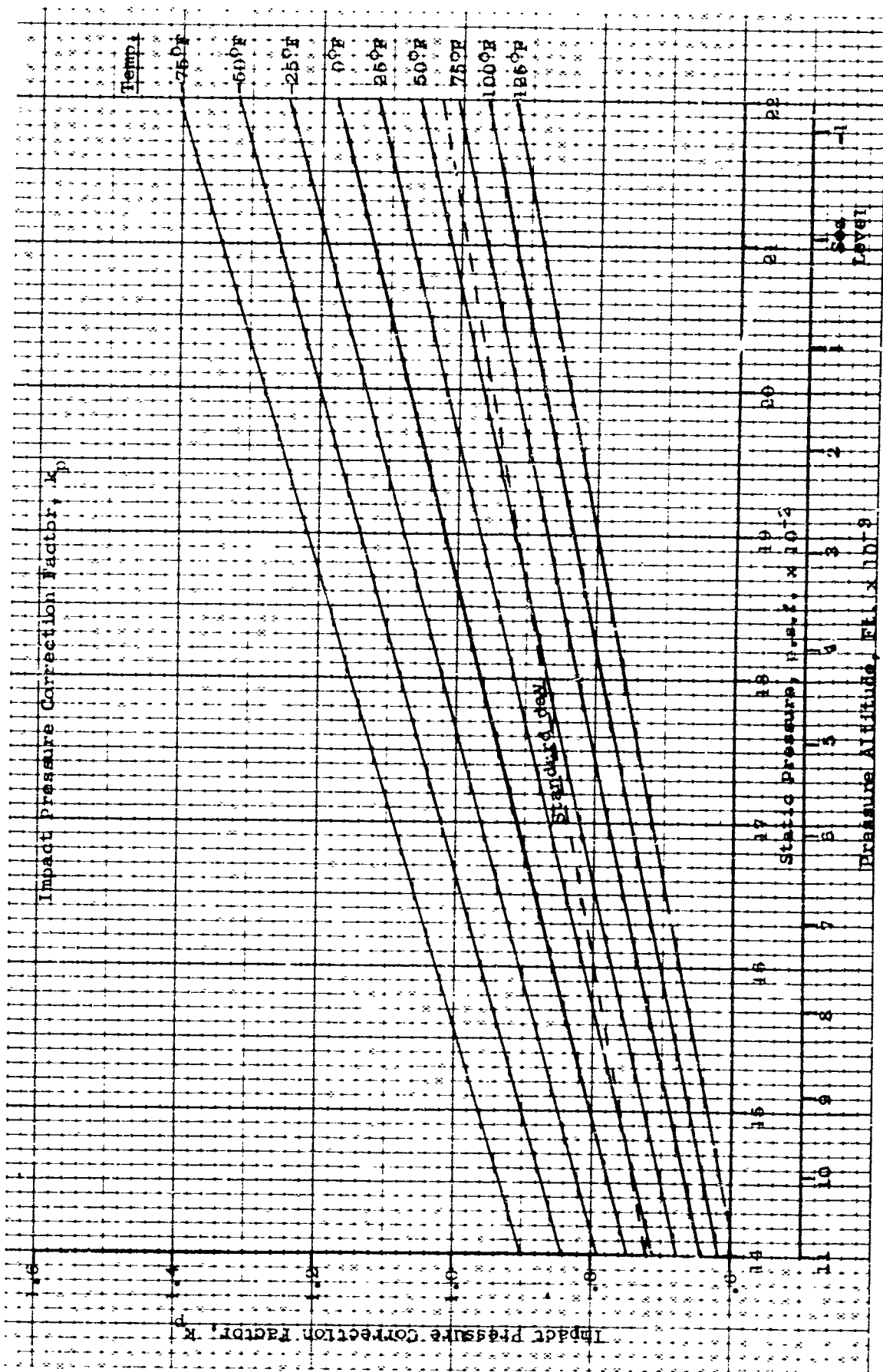


Figure 5. Impact Pressure Correction Factor,  $k_p$ , Variation with Altitude and Temperature

$P_e$  = internal pressure, lbs/sq ft

$A_f$  = floor area, sq ft

To summarize, the total force that must be resisted by the shelter anchoring system is created by the:

- (1) Aerodynamic load for double wall shelters
- (2) Aerodynamic load PLUS internal pressure for single wall shelters.

b. Definition of Anchor Load Coefficients

The general definition of an anchor load coefficient due to aerodynamic forces is:

$$C_{AL} = \frac{AL}{qA_p}$$

where:

$AL$  = anchor load, lbs

$C_{AL}$  = anchor load coefficient

In double wall shelters the anchor load is carried by anchors at the base of the shelter, as well as, by anchors securing the guy lines. The coefficients associated with these two loads are:

$$C_{BL} = \frac{BL}{qA_p}$$

$$C_{GL} = \frac{GL}{qA_p}$$

$C_{BL}$  = Anchor load coefficient for base of shelters.

$C_{GL}$  = Anchor load coefficient for guy lines.

$BL$  = Anchor load on base, lbs.

$GL$  = Anchor load on guy lines, lbs.

$q$  = Dynamic (Impact) Pressure lbs/sq ft

Anchor load coefficients as a function of width/length and height/diameter ratios are plotted in Figures 6, 7 and 8.

c. Formulas for Calculating Anchor Loads

Using Figures 6, 7, and 8 it is a simple matter to estimate the maximum anchor load on an air supported structure. The problem resolves itself to geometry and substitution into formulas. The items of information required are:

Shelter geometry  
Design wind speed  
Enclosure pressure (single wall only)

(1) Single Wall Shelters

$$\text{Total Anchor Load } P_{AL} = C_{AL} q A_p + P_e A_f$$

(2) Double Wall Shelters

$$BL = C_{BL} q A_p$$

$$GL = C_{GL} q A_p$$

$$\text{Total Anchor Load } P_{AL} = q A_p (C_{BL} + C_{GL})$$

The way the calculated load is distributed is a matter for the tent designer. If the anchoring system consists of individual anchors equally spaced around the shelter and the holding capability of the anchor is known, the total load divided by the anchor holding power will determine the number of anchors to be used. If the shelter is to be continuously held down along the floor perimeter, the total load divided by the shelter perimeter determines the load/foot.

The U.S. Army uses several types of anchoring systems such as concrete pads with metal hold down bolts, steel hold down rings on towers and arrowhead ground anchors. The arrowhead anchors, as described in MIL-A-3962A, Anchors, Ground, Arrowhead, 4", 6" and 8" with Auxiliary Equipment, are generally used for field installations. Considerable work is being done by the Natick Laboratories to determine the holding capabilities of the 4" arrowhead anchor in various types of soil. This work will be reported separately after it is completed. To give an indication of the order of magnitude of the holding power, 4" anchors, when driven to their full depth of 28" will hold about a 1000 lbs in sand and about 2000 lbs in sandy gravel.



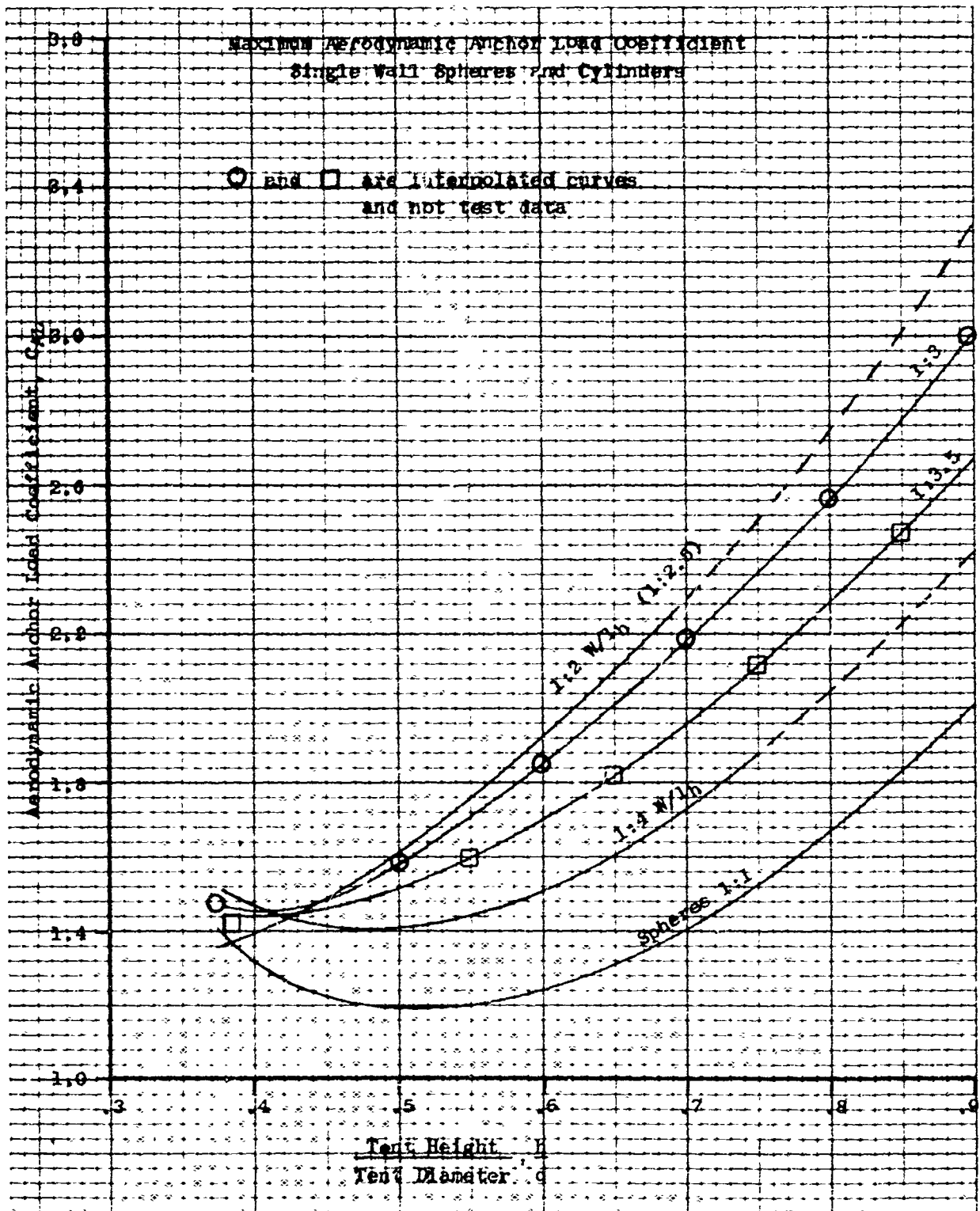


Figure 6. Variation of Anchor Load Coefficient with Shape

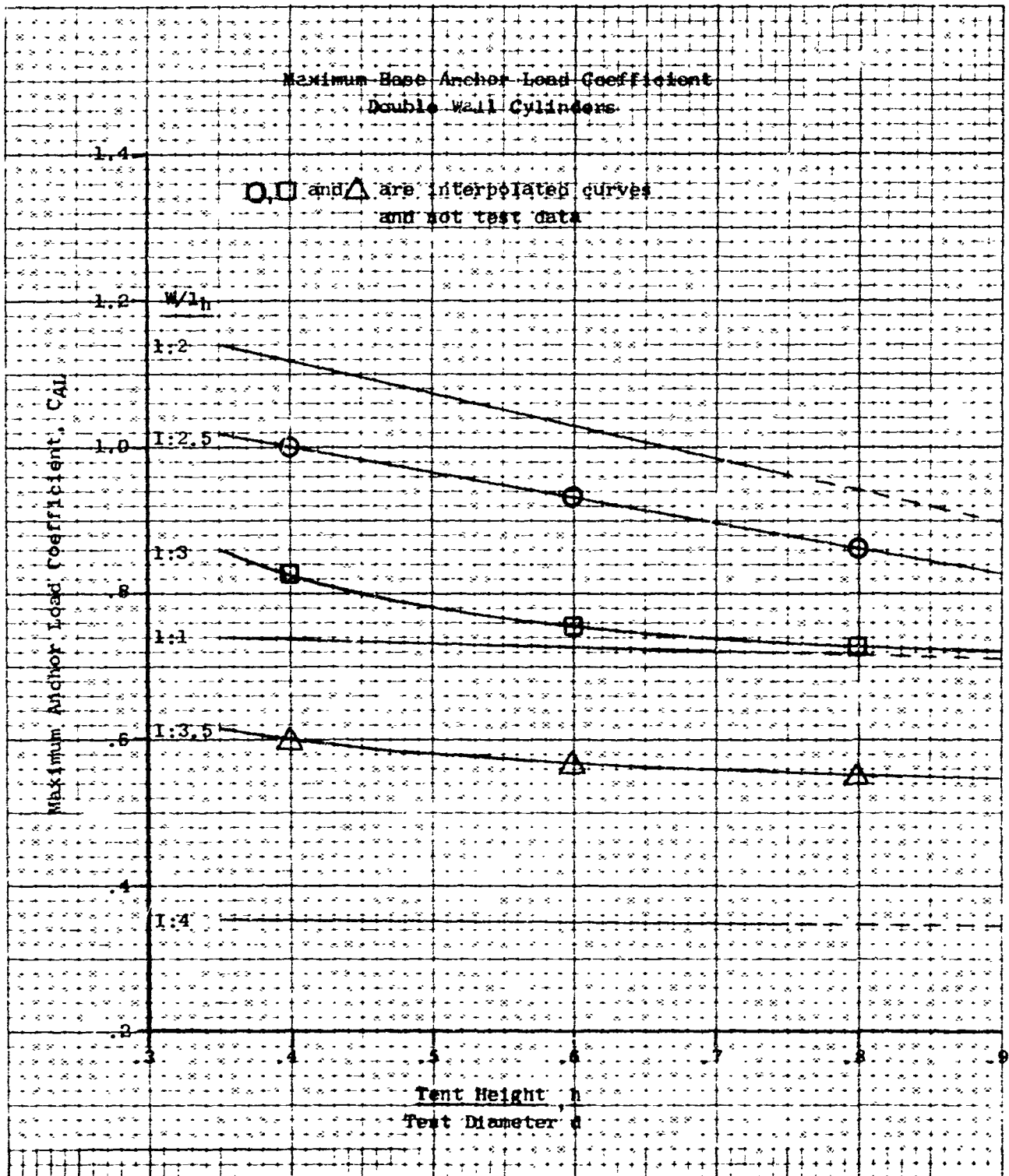


Figure 7. Variation of Base Anchor Load Coefficient-Shape

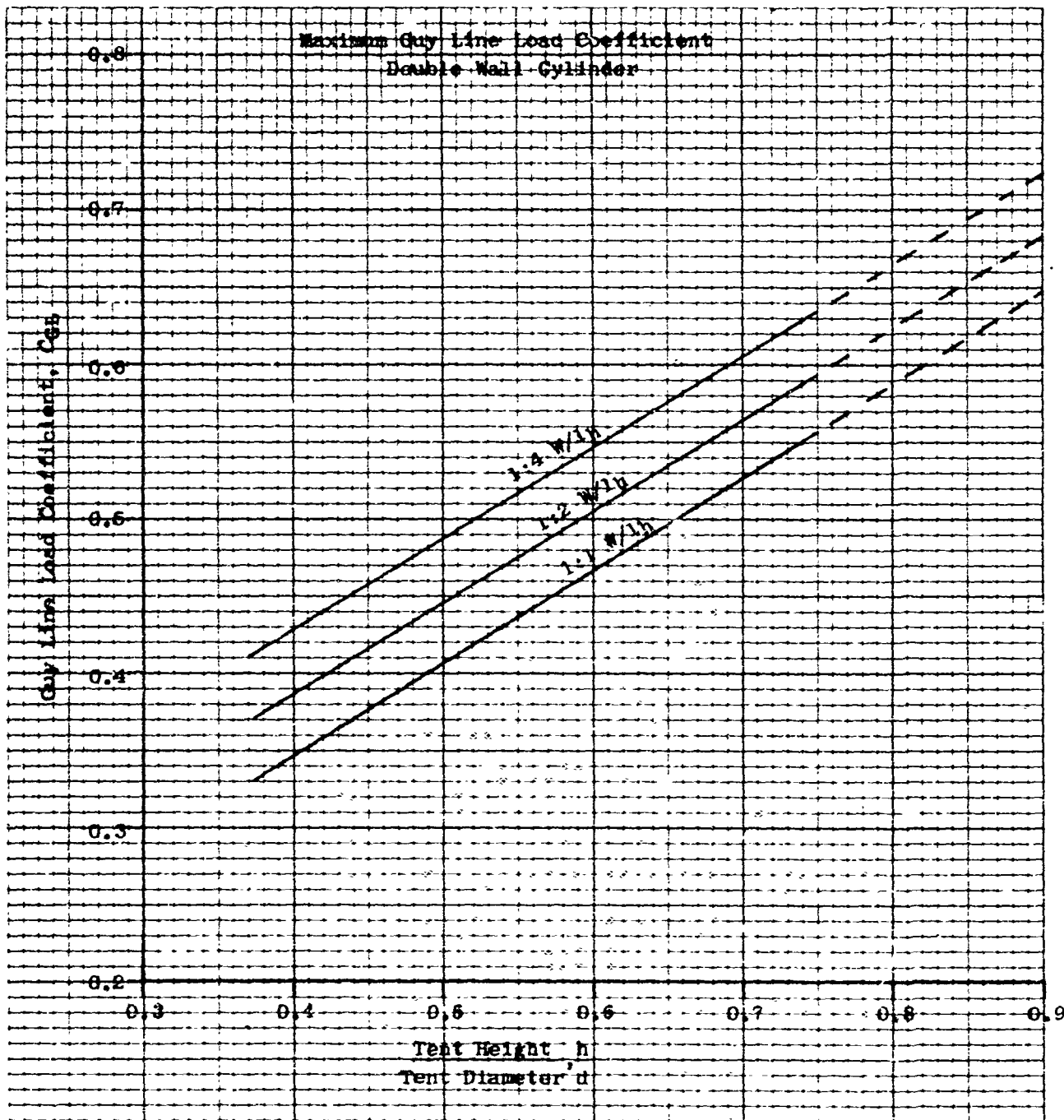


Figure 8. Variation of Guy Line Load Coefficient with Shape

Another fact of interest is that for anchors driven 28-30" the minimum distance between anchors should be at least 30 inches. These figures are presented for illustrative purposes only and will indicate the type of information required concerning the anchoring system to be used on the shelter being considered.

d. Sample Calculations

(1) The following calculations are for the single-wall, spherical shape (Fig. 9):

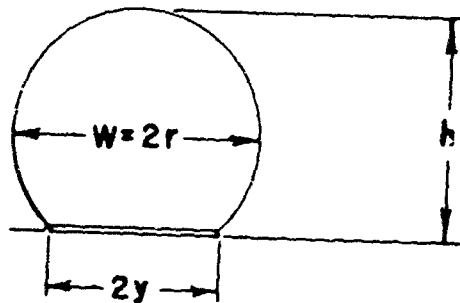


Figure 9. Single-Wall Sphere

Width =  $w = 30 \text{ ft} = 2r$

Height =  $h = 22.5 = \text{ft}$

Sea level

Temperature expected + 60 to -30°F

Wind velocity = 90 knots

Enclosure pressure =  $q$

Geometric Considerations

Length of chord =  $2y = 2\sqrt{r^2 - (h-r)^2}$

$$y = \sqrt{2hr - h^2}$$

$$y^2 = 2(22.5)(15) - (22.5)^2 = 169$$

$$y = 13 \text{ ft}$$

$$A_f = \pi y^2 = 169\pi = 531 \text{ sq ft}$$

$$\text{Perimeter} = 2\pi y = 2\pi(13) = 82 \text{ ft}$$

$$A_p = \pi r^2 = \pi(15)^2 = 709 \text{ sq ft}$$

Determining impact pressure, q

Figure 4 - at 90 knots, q (standard) = 27 psf (lb/sq ft)

Figure 5 - max correction factor = 1.21

Actual q = 1.21 (27) = 32.7 psf

Anchor loads

Aerodynamic load

$$h/d = 22.5/30 = .75$$

$$w/l_h = 30/30 = 1.0 \text{ (sphere)}$$

Figure 6 -  $C_{AL} = 1.5$

$$\begin{aligned} \text{Wind load} &= C_{AL} q A_p = 1.5 (32.7) (709) \\ &= 34,700 \text{ lbs} \end{aligned}$$

$$\begin{aligned} \text{Inflation pressure load} &= P_e A_f \\ &= (32.7) (531) \\ &= 17400 \text{ lb} \end{aligned}$$

$$\text{Total Load} = 34700 + 17400 = 52,100 \text{ lb}$$

Distributing Anchor Load

Assume an anchor holds 1500 lb

$$\text{No. of anchors} \frac{52100}{1500} = 35$$

$$\text{Anchor spacing} \frac{82}{35} = 2.34 \text{ ft}$$

(2) The following calculations are for the single-wall, cylindrical shape with spherical ends (Fig. 10):

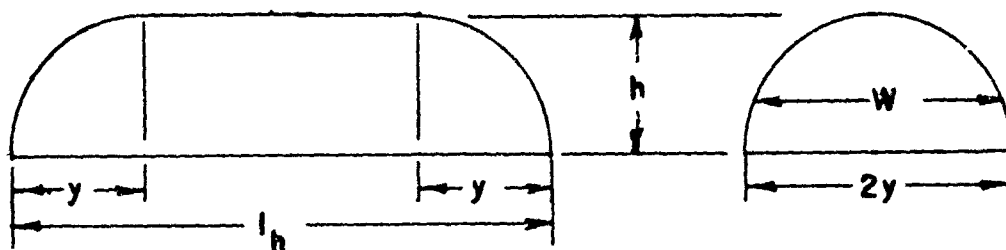


Figure 10. Single-Wall Cylinder

$$\text{Width} = W = 50 \text{ ft} = 2r$$

$$\text{Height} = h = 25 \text{ ft}$$

$$\text{Length} = l_h = 100 \text{ ft}$$

Sea level standard atmosphere

Wind velocity - 105 mph

Enclosure pressure =  $q$

Geometric considerations

$$\text{Length of Chord } 2y = 2\sqrt{r^2 - (h-r)^2}$$

$$y^2 = 2hr - h^2$$

$$y^2 = 2(25)(25) - (25)^2 = 625$$

$$y = 25 \text{ ft}$$

$$A_f = \pi y^2 + 2y (l_h - 2r)$$

$$= 625\pi + 50 (100-50)$$

$$A_f = 1962 + 2500 = 4462 \text{ sq ft}$$

$$\text{Perimeter} = 50\pi + 100 = 256 \text{ ft}$$

$$A_p = \pi r^2 + 2r (l_h - 2r)$$

$$= 625\pi + 50 (100-50) = 4462 \text{ sq ft}$$

In this example the planform area equals the floor area which is not always the case.

Determining impact pressure, q

Figure 4 at 105 mph,  $q = 28$  psf

Anchor loads

Aerodynamic load

$$h/d = 25/50 = .5$$

$$W/l_h = 50/100 = .5$$

Figure 6  $C_{AL} = 1.6$

$$\text{Wind load} = C_{AL} q A_p = 1.6 (28) (4462)$$

$$= 200,000 \text{ lbs}$$

$$\text{Inflation pressure load} = P_e A_f$$

$$= 28 (4462)$$

$$= 125,000 \text{ lbs}$$

$$\text{Total Load} = 200,000 + 125,000 = 325,000 \text{ lbs}$$

Distributing Anchor Load

Assume an anchor holds 2000 lbs

$$\text{No. of anchors} = \frac{325,000}{2000} = 163 \text{ anchors}$$

$$\text{Anchor spacing} = \frac{256}{163} = 1.57 \text{ ft.}$$

This spacing is quite close for a 4" arrowhead anchor system but might be suitable for other types. If arrowheads are needed, larger anchors, deeper placement or pairs of 4" anchors could be used to increase spacing.

(3) The following calculations are for the double-wall, cylindrical shape with flat ends (Fig. 11):

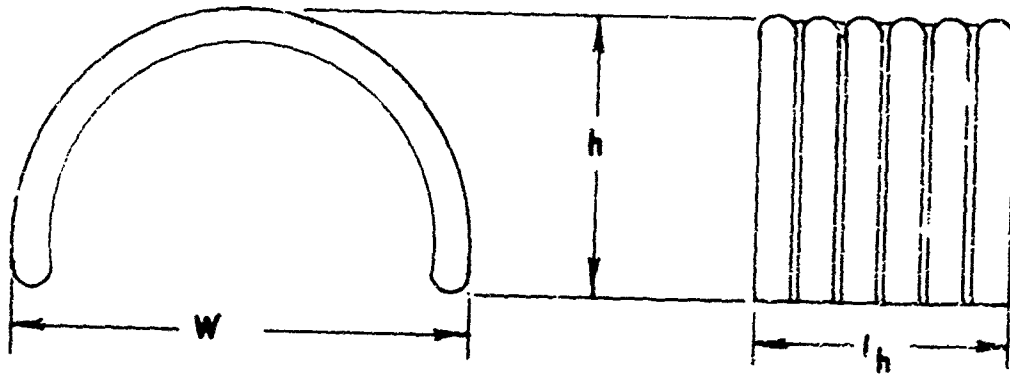


Figure 11. D-W Cylinder

Width =  $W = 100$  ft

Height =  $h = 50$  ft

Length =  $l_h = 200$  ft

Sea level, standard atmosphere

Wind velocity -105 mph

Geometric considerations

Length of anchored sides  $2(200) = 400$  ft

$A_p = W/h$

$= 100(200) = 20000$  sq ft

Determining impact pressure,  $q$

Figure 4 at 105 mph  $q = 28$  psf

Anchor loads

$h/d = 50/100 = .5$

$W/l_h = 100/200 = .5$

Figure 7,  $C_{BL} = 1.08$

Figure 8,  $C_{GL} = .44$



Total Anchor Load  $P_{AL} + qA_p (C_{BL} + C_{GL})$

$$P_{AL} = 28 (20000) (1.08 + .44)$$

$$= 856000 \text{ lbs}$$

$$BL = 1.08 (28) 20,000 = 607,000 \text{ lbs}$$

$$GL = .44 (28) 20,000 = 249,000 \text{ lbs}$$

Two points to be noted are the extreme forces possible on an air-supported structure and the fact that the base of the shelter requires three times as much anchoring as the guylines. The latter factor is contrary to common belief but has been indicated consistently in the wind tunnel studies performed on model double-wall shelters.

#### Distributing Anchor Loads

Assume an anchor holds 4000 lbs

$$\text{No. of Base Anchors } \frac{607000}{4000} = 152$$

$$\text{No. of Guyline Anchors } \frac{249000}{4000} = 62$$

$$\text{Spacing along base } \frac{400}{152} = 2.63 \text{ ft}$$

$$\text{Spacing of guyline } \frac{400}{62} = 6.5 \text{ ft}$$

Unclassified  
Security Classification

| DOCUMENT CONTROL DATA - R&D  |  |               |
|--|--|---------------|
| <i>(Security classification of title, body of abstract and indexing annotation must be entered when the overall report is classified)</i>  |  |               |
| 1 ORIGINATING ACTIVITY (Corporate author)  | 2a REPORT SECURITY CLASSIFICATION  |               |
| U.S. Army Natick Laboratories<br>Natick, Massachusetts   | Unclassified   |               |
|  | 2b GROUP   |               |
| 3 REPORT TITLE   |  |               |
| Guide for Estimating Maximum Anchor Loads on Air-Supported Structures  |  |               |
| 4 DESCRIPTIVE NOTES (Type of report and inclusive dates)   |  |               |
| 5 AUTHOR(S) (Last name, first name, initial)   |  |               |
| Strain, Thomas C. and Tumelnski, Ronald F.   |  |               |
| 6 REPORT DATE  | 7a TOTAL NO OF PAGES   | 7b NO OF REFS |
| March 1967   | 18   |               |
| 8a CONTRACT OR GRANT NO  | 9a ORIGINATOR'S REPORT NUMBER(S)   |               |
| b PROJECT NO 1M642101D503  | 67-54-GP   |               |
| c  | 9b OTHER REPORT NO(S) (Any other numbers that may be assigned this report) |               |
| d  |  |               |
| 10 AVAILABILITY LIMITATION NOTICES   |  |               |
| Distribution of this report is unlimited. Release to CFSTI is authorized.  |  |               |
| 11 SUPPLEMENTARY NOTES   | 12 SPONSORING MILITARY ACTIVITY  |               |
|  | U.S. Army Natick Laboratories<br>Natick, Mass.                             |               |
| 13 ABSTRACT  |  |               |
| This report contains all the graphs, tables, mathematical formulas, and design data necessary to estimate the maximum loads on anchoring systems used with air-supported shelters subjected to winds up to 105 mph. The design data are presented in non-dimensional coefficient form. Sample problems are included to illustrate the use of the data and their application to both single and double-wall structures. |  |               |

DD FORM 1473

Unclassified  
Security Classification

| 14. KEY WORDS         | LINK A |    | LINK B |    | LINK C |    |
|-----------------------|--------|----|--------|----|--------|----|
|                       | ROLE   | WT | ROLE   | WT | ROLE   | WT |
| Data                  |        | 8  |        |    |        |    |
| Estimation            |        | 8  |        |    |        |    |
| Loads (Forces)        |        | 9  |        |    |        |    |
| Load distributions    |        | 9  |        |    |        |    |
| Anchors (structural)  |        | 9  |        |    |        |    |
| Inflatable structures |        | 9  |        |    |        |    |
| Radomes               |        | 9  |        |    |        |    |
| Tents                 |        | 9  |        |    |        |    |
| Structures            |        | 9  |        |    |        |    |
| Air-supported         |        | 0  |        |    |        |    |
| Cylindrical           |        | 0  |        |    |        |    |
| Spherical             |        | 0  |        |    |        |    |
| Design manual         |        | 0  |        |    |        |    |
| Graphs                |        | 0  |        |    |        |    |
| Tables                |        | 0  |        |    |        |    |

INSTRUCTIONS

1. **ORIGINATING ACTIVITY:** Enter the name and address of the contractor, subcontractor, grantee, Department of Defense activity or other organization (*corporate author*) issuing the report.
- 2a. **REPORT SECURITY CLASSIFICATION:** Enter the overall security classification of the report. Indicate whether "Restricted Data" is included. Marking is to be in accordance with appropriate security regulations.
- 2b. **GROUP:** Automatic downgrading is specified in DoD Directive 5200.10 and Armed Forces Industrial Manual. Enter the group number. Also, when applicable, show that optional markings have been used for Group 3 and Group 4 as authorized.
3. **REPORT TITLE:** Enter the complete report title in all capital letters. Titles in all cases should be unclassified. If a meaningful title cannot be selected without classification, show title classification in all capitals in parenthesis immediately following the title.
4. **DESCRIPTIVE NOTES:** If appropriate, enter the type of report, e.g., interim, progress, summary, annual, or final. Give the inclusive dates when a specific reporting period is covered.
5. **AUTHOR(S):** Enter the name(s) of author(s) as shown on or in the report. Enter last name, first name, middle initial. If military, show rank and branch of service. The name of the principal author is an absolute minimum requirement.
6. **REPORT DATE:** Enter the date of the report as day, month, year, or month, year. If more than one date appears on the report, use date of publication.
- 7a. **TOTAL NUMBER OF PAGES:** The total page count should follow normal pagination procedures, i.e., enter the number of pages containing information.
- 7b. **NUMBER OF REFERENCES:** Enter the total number of references cited in the report.
- 8a. **CONTRACT OR GRANT NUMBER:** If appropriate, enter the applicable number of the contract or grant under which the report was written.
- 8b, 8c, & 8d. **PROJECT NUMBER:** Enter the appropriate military department identification, such as project number, subproject number, system numbers, task number, etc.
- 9a. **ORIGINATOR'S REPORT NUMBER(S):** Enter the official report number by which the document will be identified and controlled by the originating activity. This number must be unique to this report.
- 9b. **OTHER REPORT NUMBER(S):** If the report has been assigned any other report numbers (*either by the originator or by the sponsor*), also enter this number(s).

10. **AVAILABILITY/LIMITATION NOTICES:** Enter any limitations on further dissemination of the report, other than those imposed by security classification, using standard statements such as:

- (1) "Qualified requesters may obtain copies of this report from DDC."
- (2) "Foreign announcement and dissemination of this report by DDC is not authorized."
- (3) "U. S. Government agencies may obtain copies of this report directly from DDC. Other qualified DDC users shall request through \_\_\_\_\_."
- (4) "U. S. military agencies may obtain copies of this report directly from DDC. Other qualified users shall request through \_\_\_\_\_."
- (5) "All distribution of this report is controlled. Qualified DDC users shall request through \_\_\_\_\_."

If the report has been furnished to the Office of Technical Services, Department of Commerce, for sale to the public, indicate this fact and enter the price, if known.

11. **SUPPLEMENTARY NOTES:** Use for additional explanatory notes.
12. **SPONSORING MILITARY ACTIVITY:** Enter the name of the departmental project office or laboratory sponsoring (*paying for*) the research and development. Include address.
13. **ABSTRACT:** Enter an abstract giving a brief and factual summary of the document indicative of the report, even though it may also appear elsewhere in the body of the technical report. If additional space is required, a continuation sheet shall be attached.

It is highly desirable that the abstract of classified reports be unclassified. Each paragraph of the abstract shall end with an indication of the military security classification of the information in the paragraph, represented as (TS), (S), (C), or (U).

There is no limitation on the length of the abstract. However, the suggested length is from 150 to 225 words.

14. **KEY WORDS:** Key words are technically meaningful terms or short phrases that characterize a report and may be used as index entries for cataloging the report. Key words must be selected so that no security classification is required. Identifiers, such as equipment model designation, trade name, military project code name, geographic location, may be used as key words but will be followed by an indication of technical context. The assignment of links, rules, and weights is optional.