

NAVAL SUPPLY OPERATIONAL TRAINING CENTER
NAVAL SUPPLY DEPOT, BAYONNE, NEW JERSEY

MOBILE PACKAGING COMPONENT

PROJECT NO. 2.5020
Report No. 1

Serial No. 77
25 May 1945



AD 648237

ARCHIVE COPY

**Best
Available
Copy**

Distribution of this document
is unlimited

PREFACE

The Unit which this report covers was built by Boyertown Autobody Works in Boyertown, Pennsylvania, and is the first of its kind in the Navy.

On 16 May 1945 this Unit was sent to MSD Rayome, where the personnel assigned to work with it at an advanced base were being trained.

This report, including photographs, presents the results of the preliminary studies that were conducted, and was made under the direction of the BuSand* (RSK) and ADSTC, Camp Peary, Williamsburg, Virginia.

ACCESSION for	
CPSTI	WHITE SECTION <input checked="" type="checkbox"/>
DDC	DDC SECTION <input type="checkbox"/>
DDA	DDA SECTION <input type="checkbox"/>
JUS	JUS SECTION <input type="checkbox"/>
BY	
DATE SUBMITTED AVAILABILITY CODES	
DIST. IN ALLIED or SPECIAL	

DDC
RECEIVED
MAR 15 1967
RECEIVED
B

On the same principles of the repair ship that goes to the vessels needing repair, tankers to those needing fuel, field kitchens for troops, the Mobile Packaging Component was devised to bring packaging equipment to activities in the field. Reports have been received by the Naval Supply Operational Training Center of the time lost at advanced bases where trans-shipment was held up because of packaging needs. In one specific instance, it was necessary to send cases two miles inland from the transit shed, to be recovered. The cases were then returned to the transit shed and once more loaded aboard ship.

The mobile Packaging Component is seen in Photograph 1, arriving with its crew of 13 men and one officer. It is equipped with the machinery and supplies necessary for a day's operation, as well as the generator to supply the power needed. It takes approximately 25 minutes to unload the equipment and lay it out for operation as indicated in Photograph 2. Photographs 3-12 follow the packaging work throughout the day until the unit closes up shop (done in approximately 35 minutes) and returns to its base. It is not feasible to measure the output per day, inasmuch as the different dimensions of cases are required and various types of corrosion prevention used. However, in 8 hours the saws can turn out shooks for about 300 cases measuring 48 x 24 x 21. With a crew of only 13, not all of these shooks can be assembled in the same day but at least 50% will be complete.

This activity believes that the Mobile Packaging Component is a valuable addition to the packaging field. However, to realize fully the advantages offered, it is believed that a crew of 17-19 should be used. With the present limited number of men, it frequently becomes necessary for a man to leave his work and help out elsewhere.

LIST OF EQUIPMENT & SUPPLIES CONTAINED IN

MOBILE PACKAGING COMPONENT

<u>ITEM</u>	<u>QUANTITY</u>	<u>SUPPLIER</u>
SAW, combination, De Walt Model GER 5H.P. 220 volts 3 phase 60 cycle	1 ea	DeWalt Products Corp Lancaster, Pa. Phone 30931. John Stolarz
BLADES and collars for GER saw		
16 inch combination	4 ea	
14 inch rip	3 ea	
10" x 13/16" Dado head	1 ea	
collars, spacing 1/16 x 2 1/2	1 ea	
1/8 x 2 1/2	1 ea	
1/4 x 2 1/2	1 ea	
1/2 x 2 1/2	1 ea	
SAW, combination DeWalt Model GPI 2 3 H.P. 220 volts, 3 phase 60 cycle	1 ea	J. D. Wallace & Co. 134 So. Calif. Ave. Chicago, Ill.
BLADES, extra		
10 inch rip	2 ea	"
10 inch cross cut	2 ea	"
10 inch combination	2 ea	"
SAW, band, Wallace #16 or equiv. 2 H.P. 220 volts 3 phase, 60 cycle, with rip fence & crosscut fence	1 ea	"
BLADES for band saw		
1/8 inch	6 ea	"
1/4 inch	6 ea	"
3/8 inch	6 ea	"
1/2 inch	6 ea	"
SAW, portable, circular cutting, Black & Decker, #95 or equiv., 110 volts, Universal 60 cycles	4 ea	Black & Decker Mfg. Co. Towson, Md.
BLADES for portable saw 8-1/8 inch diam.		
Rip	24 ea	"
Crosscut	24 ea	"
Half cutting	24 ea	"
SAW, circular, jointer & cutter grinder combination 110 volts, AC single phase 60 cycle with 2 extra cup grdg. wheels	1 ea	Huther Bros. Saw Mfg. Co. Rochester, N.Y.
SAW, Band, filer, Black Diamond Model 1 1 or equiv. 1/6 H.P., 110 volts 60 cycle AC complete with 12 files each for blades 1/8, 1/4, 3/8 and 1/2 inch.	1 ea	Black Diamond Mfg. Co. Hatfield, Mass.

<u>ITEM</u>	<u>QUANTITY</u>	<u>SUPPLIER</u>
SAW, band, brazing outfit, Oliver #462 or equiv. 110 volts, AC single phase, 60 cycle.	1 ea	Oliver Machinery Mfg. Co. Grand Rapids, Mich.
SAW, circular, stake, setting	1 ea	Huther Bros. Saw Mfg. Co.
GRINDER, portable, single speed with 6 ft. flex. shaft, Jarvis type SD05 or equiv. $\frac{1}{2}$ H.P. 110 volts, AC 60 cycle.	1 ea	Chas. L. Jarvis Co. Middletown, Conn.
GRINDER, portable, brushes, 6 x 1 x $\frac{1}{2}$. Jarvis #432 except wires to be made of brass .004 size of wire.	6 ea	"
GRINDER, portable, shafts (core & casing).	2 ea	"

<u>STOCK NO.</u>	<u>ITEMS</u>	<u>QUANTITY</u>	<u>SUPPLIERS</u>
	Paper, Glassine, Sulphite, 30 to 35 lb. 3" core, basic wt. 36 inch width 9" dia. roll	100 rolls	Western Wax Paper co. Berkeley, Cal.
	Paper, waterproof x crepe	25 rolls	Cincinnati, Industries
	Paper, waterproof, type E2 or H1, 2, 3, 4 or M, 36" width	100 rolls	Clopay Corp Cinc. Ohio.
	50" width	100 rolls	
	72" width	100 rolls	
	Barrier, foil, Reynolds type A 50, 36" width.	15 rolls	Acme Backing Corp. Bklyn. N.Y.
	Kispack, 24 inch width	25 rolls	Kimberly Clark Corp.
	Paperboard, corrugated, single face.	15 rolls	
	Bags, waterproof, Grade A, Greaseproof lined Type 1,		
	8 x 12	10,000	Central States Paper Co. St. Louis, Mo. Minnesota
	4 x 3	15,000	
	3 x 5	25,000	
	Tape, acetate, pressure sensitive		Mining & Mfg. Co. St. Paul, Minn.
	1/2 inch rolls	100 rolls	
	1 inch roll	100 rolls	
	2 inch rolls	50 rolls	
	Tape, waterproof, resin coated, cloth back, Utilitape or Mystick	250 rolls	Industrial Tape Corp. New Brunswick, N.J., Chi. Minn. Mining & Mfg. Co. St. Paul, Minn.
	3 inch rolls		
	Adhesive, waterproof case liner, Minn. Mining & Mfg. Co. EC 164-EC 260		
	5 gal. pails	100 gals.	
	1 gal. pails	50 gals.	
	Silica gel conforming to Spec. 51 S 32 (IWT) dated 15 Aug. 1944.		Davidson Chem. Co. Balt. Md. Culligan Zeolite Co. W. Chicago, Ill.
	4 oz. bags in 20 lb drum	200 lbs.	
	8 oz. bags in 20 lb drum	200 lbs.	
	Compound, asphaltic, for crate topping -		The Barrett Co. (roofing office) Davidson Co. Balt. Md.
	5 gal. drums	200 gals.	
	Paint, obliterating, sand color, DuPont 1671-207, 5 gal drums	150 gals.	
53-E-5150	Envelopes, shipping waterproof form NIS-48	25,000	

<u>STOCK NO.</u>	<u>ITEMS</u>	<u>QUANTITY</u>	<u>SUPPLIERS</u>
53-C-15100	Covers, protection, fiber-board for waterproof envelopes	25,000	
	Aprons, carpenters'	24 ea	
	Water pump tank, 3 gal. without anti-freeze charge.	3 ea	
41-K-490	Knife, linoleum, 2½ inch blade	12 ea	
64-K-860	Knife, Kitchen, paring, 3½ inch blade	24 ea	
42-C-20358	Cloth, aluminum, oxide, 9½ x 11 sheets 4/0-150	2,000 sheets	
37-G-2593-100	Gloves, organic solvent resistant rubber, size 10	24 pr.	
37-G-2596	Gloves, work	36 pr.	
13-O-1535	Cans, oil	4 ea	
27-B-1270	Burlap, 40 inches wide	200 yds.	
30-L-860	Excelsior, medium	1500 lbs	
41-N-323	Needles, sailmakers	1 ea	
53-T-812	Tags, cardboard	2000	
53-C-15808	Crayon, black	12 ea.	
42-L-14410-55	Locks, pad	12 ea.	
21-F-290	Twine	12 lbs.	
41-T-3369	Stretcher for 5/8 x .020 Strapping, Acme Steel Co. type N or Signode Steel Strapping Co Model J 6	3 ea.	
41-T-3357	Sealer for 5/8 x .020 strapping, Acme No. 905 or Signode Mod. 6B	3 ea.	
41-T-3369-8	Stretcher for 1½ inch strapping, Acme Model E: 219 or Signode No. 3	2 ea.	
41-T-3358	Sealer for 1½ x .020 Strapping Acme Model 10D or Signode Model 6B	2 ea.	
42-S-26400	Strap. Steel QQ S 781a Federal Spec. Type 1, 5/8 x .020, Class A or C (wrapped for export) mill wound	10,000 lbs	Brainard Steel Corp. Warren Ohio; Acme Steel Co., Chicago, Ill. Signode Steel Strapping Co. Chicago, Ill.
42-S-24435	Strap steel 1½ x .035 Heavy duty, Class C, ribbon wound	10,000 lbs	
42-S-26415	Seals (open type) 5/8 inch Acme #51 or Signode #8 or Universal type 38 U 5/8	50,000 lbs.	
42-S-26420	Seals, 1½ inch Acme #1032 or Signode #107 Reel Stand, Acme #2 or Stanley Steel Co. Model N.	2 ea.	The Stanley Works, New Britain, Conn.

<u>STOCK NO.</u>	<u>ITEMS</u>	<u>QUANTITY</u>	<u>SUPPLIER</u>
	Holder, unit coil (Acme Steel Co.)	1 ea.	
	Cutter, strap, Signode Model #13	6 ea.	
	Staples, cement coated, for securing steel strapping		
	3/4 x 3/4	100 lbs.	
	1 1/4 x 1/4	100 lbs.	
	plates, anchor 1 1/4 Signode	1000 ea.	
	Screws, drive 7/32 x 1 3/4 Signode	8000 ea.	
51-C-1326-76	Cleaning, liquid, solvent drycleaning clear 50-55 gal. drum metal compound, Rust Preventive, Thin film.	500 gal.	
52-C-3257-16	Polar type Grade I	500 gal.	
52-C-3257-45	Polar Type Grade II	500 gal.	
52-C-3257-75	Polar Type Grade III	300 gal.	
57-C-4000	Compound, wax dipcoating	500 lbs.	
53-P-23370-25	Paper, wrapping, greaseproof, one side wax free, Grade C type I		
	Width of roll 36" 3" core	100 rolls	
53-P-23370-26	Paper, Grade A, type 2 to Spec. 53-W-3		
	rolls 36" wide 3" core	50 rolls	
	Paper, wrapping, Kraft, Rolls, 9" dia. 36" wide, 60 lb basic wt. 3" core	500 lbs.	
	Boxes, shipping, fiber, corrugated double faced regular slotted construction, style 1		
53-B-24800	5 3/4 x 5 1/2 x 5 1/2	500 ea.	
53-B-24860	7 x 7 x 12 (or approx. size)	500 ea.	
40-B-450	Bit for drill machine wood boring 1/4" dia	12 ea.	
40-B-452	Bit for drill machine wood boring 3/8" dia	12 ea.	
40-B-454	Bit for drill machine wood boring 1/2" dia.	12 ea.	
40-B-455	Bit for drill machine wood boring 5/8" dia.	6 ea.	
40-B-456	Bit for drill machine wood boring 3/4" dia.	6 ea.	
40-B-457	Bit for drill machine wood boring 7/8" dia	6 ea.	
40-B-458	Bit for drill machine wood boring 1" dia.	6 ea.	
41-D-1678	Drills, hand	3 ea.	
40-D-1679	Drills, twist	4 sets	
40-D-1676	Drills, twist	4 sets	
41-C-1650	Chisels, Wood Worker's, 1" width of blade	6 ea.	

<u>STOCK NO.</u>	<u>ITEMS</u>	<u>QUANTITY</u>	<u>SUPPLIERS</u>
41-C-1552	Chisels, wood workers, $\frac{1}{2}$ " width of blade	6 ea.	
41-C-1553	Chisels, wood workers, $\frac{3}{4}$ " width of blade	6 ea.	
41-H-1040	Handles, chisel, large	12 ea.	
41-H-1041	Handles, chisel, medium	12 ea.	
41-H-1042	Handles, chisel, small	12 ea.	
41-H-1115	Handles, file, large	6 ea.	
41-H-1116	Handles, file, medium	6 ea.	
41-H-1117	Handles, file, small	6 ea.	
41-S-1101	Screwdrivers, common, 3 inch	6 ea.	
41-S-1104	Screwdrivers, common 6 inch	6 ea.	
41-S-1106	Screwdrivers, common, 8 inch	6 ea.	
41-S-1116	Screwdrivers, common, 18 inch	3 ea.	
41-S-1615	Screwdriver, ratchet, 12 inch	4 ea.	
41-R-3073	Rule, tape, steel 6 ft. type B	24 ea.	
41-R-2844	Rule, folding, 6 ft	24 ea.	
41-W-402	Mallets, wood	6 ea.	
41-H-187	Hammer, carpenter, claw, 1 lb.	36 ea.	
41-H-	Hammer, carpenter, claw, 13 oz.	12 ea.	
41-H-1201	Handle, hammer, carpenter, 14"	36 ea.	
41-H-1541	Hatchets, claw	6 ea.	
41-P-3394	Hacksaw, frame	3 ea.	
41-B-1155	Blades, hacksaw, 18 tooth	36 ea.	
41-B-1157	Blades, hacksaw 4 tooth	36 ea.	
41-C-1730	Clamps, C 4 inch	4 ea.	
41-C-1732	Clamps, C 6 inch	4 ea.	
41-C-1734	Clamps, C 8 inch	4 ea.	
41-P-2125	Plumb Bobs	4 ea.	
41-W-485	Wrenches, adjustable 22 $\frac{1}{2}$ degree angle 8"	3 ea.	
41-W-487	Wrenches, adjustable 22 $\frac{1}{2}$ degree angle 10"	3 ea.	
41-W-488	Wrenches, adjustable 22 $\frac{1}{2}$ degree angle 12"	3 ea.	
41-W-2100	Wrenches, end	1 set	
41-W-1663	Wrench, pipe 14 inch	1 ea.	
41-W-2997	Wrenches, socket	1 set	
41-P-604	Plane, block	4 ea.	
41-P-1452	Plane, smooth	4 ea.	
41-P-1190	Plane, jack	4 ea.	
41-P-1326	Plane, rabbitting	1 ea.	
41-C-1120	Chisels, cold $\frac{3}{4}$ inch	4 ea.	
41-C-1138	Chisels, cold 1 inch	4 ea.	
41-B-550	Level, sliding 7 1/2 inch	4 ea.	
41-S-2813	Snips, tin 12 inch	2 ea.	
41-S-2177	Nail sets	8 ea.	
41-L-1058	Bevel 28"	2 ea.	
41-B-175	Crowbar 1 1/2" stock 60" long	3 ea.	
41-B-250	Bar, wrecking, goose neck 26"	4 ea.	

<u>STOCK NO.</u>	<u>ITEMS</u>	<u>QUANTITY</u>	<u>SUPPLIERS</u>
41-B-284	Bar, wrecking, goose neck 36"	4 ea.	
41-S-4400	Square, carpenters, steel, tongue 16" body 24"	4 ea.	
41-S-4541	Square, combination	4 ea.	
41-S-4453	Square, tri 8"	4 ea.	
41-A-1227	Axes, chopping 4 lb.	4 ea.	
41-P-2950	Fuller, nail 18 inch	12 ea.	
41-P-1631	Pliers, combination, slip joint 6 inch	4 ea.	
41-P-1635	Pliers, combination, slip joint 10 inch	4 ea.	
41-P-1974	Pliers, side cutting, 6 inch	4 ea.	
41-P-1714	Pliers, diagonal cutting 6 inch	4 ea.	
41-S-3700	Sledges, cross peen 6 lb.	2 ea.	
41-S-3722	Sledges, double face 6 lb	2 ea.	
38-B-3145	Brushes, paint 2 1/2"	1 doz.	
38-B-2857-25	Brushes, paint 3"	1 doz.	
14-P-50	Paraffine in 1 lb packages	5 lbs.	
Y and D			
4-52-2	Tarpaulin 10 x 20 with ropes and grommets	6 ea.	Advance Base Dept Y&D Main Navy 4506. Lt. Com Karp
41-S-800	Rope, Sisal, circumference 1 1/2"	90 lb.	
41-M-251	Machine, stencil cutting 3/4" characters	1 ea.	
	Machine, stencil cutting 1 3/4" Characters	1 ea.	Jenn Hughes Co. Mills Bldg. Washington D.C.
39-B-4257	Brush, stencil, fountain	6 ea.	"
	Extra brush tips for stencil	12 ea.	"
	Markers, fountain, Diagraph Bradley or equiv.	6 ea.	"
	Extra felt tips for fountain markers, round point	36 tips	"
41-T-1850	Threading sets - bolt & screw	1 set	
46-S-3604	Rod, hot rolled, round 3/8" dia.	100 lbs	
41-A-822	Auger, ship 3/8 x 14	4 ea.	
41-A-824	Auger, ship 1/2 x 14	4 ea.	
	Baskets, wire, dipping size 18 x 12 x 6	6 ea.	Aeroil Burner Co. Inc. West N.Y., N.J. or Staywara Elect Co. Ravenna, O.
53-P-20660	Board, stencil cut to size 8 x 30	6000 sheets	
53-I-4110	Ink, stencil, black, water- proof, in qt. cans	200 qts.	

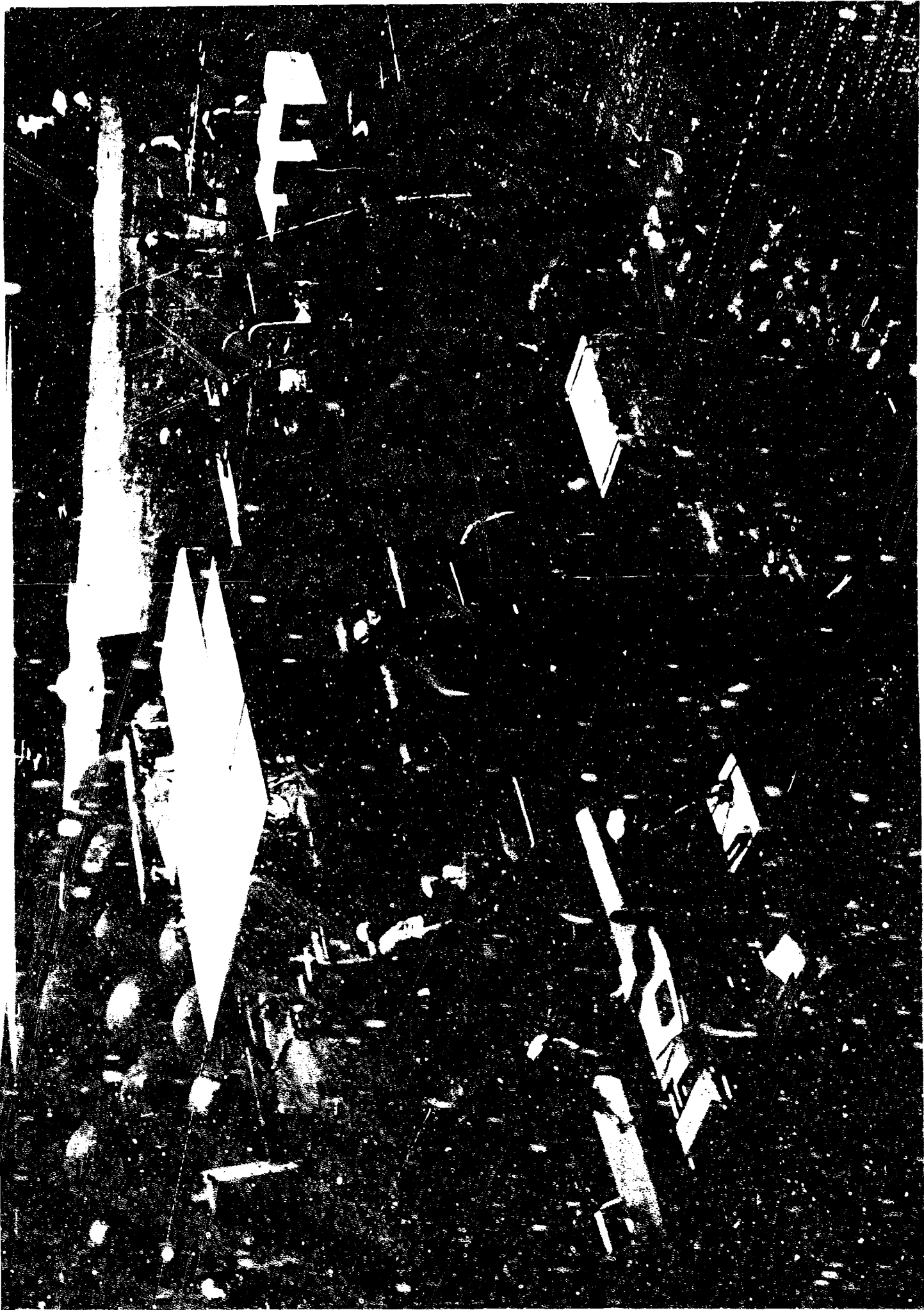
<u>STOCK NO.</u>	<u>ITEMS</u>	<u>QUANTITY</u>	<u>SUPPLIERS</u>
42-E-32008	Nails, cement coated box, Sinker or Cooler 6D	2500 lbs.	
42-E-32012	Nails, cement coated box, Sinker or Cooler 8D	2500 lbs.	
42-E-32016	Nails, cement coated box, Sinker or Cooler 10D	2500 lbs.	
42-N-33328	Nails, cement coated box, Sinker or Cooler 20D	500 lbs.	
42-N-25828	Nails, wire, steel, bright, common 80D	500 lbs.	
43-W-4012	Washers, Iron or Steel 7/16 x 1	50 lbs.	
43-W-4032	Washers, Iron or Steel 11/16 x 1-3/4	200 lbs.	
43-W-4036	Washers, Iron or Steel 13/16 x 2	200 lbs.	
42-T-3936	Tack, upholsters 5/8"	100 lbs.	
43-B-6145	Bolts, carriage (common steel), square head, square nuts 3/8 x 4	500 no.	
43-B-6161	3/8 x 5 1/2	500 no.	
43-B-6242	3/8 x 4	500 no.	
43-B-6248	3/8 x 5 1/2	500 no.	
43-B-6256	3/8 x 7 1/2	500 no.	
43-B-8312	5/8 x 4	500 no.	
43-B-8316	5/8 x 5	500 no.	
43-B-8328	5/8 x 7 1/2	500 no.	
	Screws, lag, steel square head zinc coated.		
43-S-6398	3/8 x 3 1/2	2500 no.	
43-S-6394	3/8 x 4	2500 no.	
43-S-6394	3/8 x 6	2500 no.	
43-S-6470	1/2 x 4	2500 no.	
43-S-6464	1/2 x 2 1/2	2500 no.	
43-S-6478	1/2 x 6	2500 no.	
43-S-6544	5/8 x 2 1/2	2500 no.	
43-S-6560	5/8 x 4	2500 no.	
43-S-6566	5/8 x 5 1/2	2500 no.	
11-J-147-75	Jack ratchet lever type IV 5 ton	2 ea.	
19-T-1740	Thermometers, chemical, class d, to 400°	4 ea.	
17-F-230	Fan, electric, 110 volt, AC 60 cycle	4 ea.	
40-G-516	Guns, paint & varnish spray, portable electric motor driven AC 60 cycle 1 qt capacity	2 ea.	
40-G-139	Grinder, 1/2 H.P. 110 volts, AC 60 cycle	1 ea.	
40-D-241	Drill, portable, 1/2" 110 volts, AC 60 cycle	1 ea.	
40-D-339-5	Drill, portable, pistol grip 1/2" 110 volts, AC 60 cycle	1 ea.	

<u>STOCK NO.</u>	<u>ITEMS</u>	<u>QUANTITY</u>	<u>SUPPLIERS</u>
40-D-345	Drill, portable $\frac{1}{2}$ " 110 volts AC 60 cycle	1 ea.	
41 -128	Tank, heating dipping portable 15 gal capacity, 110 volts AC 60 cycle, thermostatic control	1 ea.	
	Tank, cleaning, unheated, rinse size 25 x 25 x 9 $\frac{3}{4}$ height 33" with bottom drain.	4 ea.	Aerol Burner Co. West N.J., N.J.
41-1-567	IRON, electric, flat SEALER, Heat, hand operated 110 volts AC 60 cycle	2 ea. 2 ea.	Ameco Pkg Mach. Co. Inc. 31-48th Ave. L.I. City, N.Y.
	CONVEYOR, 24" width, 6' length 2 to 2 $\frac{1}{2}$ " ball bearing rollers mounted high in channels. Each length with 26" stands adjustable plus or minus 6"	14 lengths	Alvey Con- veyor Co St. Louis, Mo.
	TRANSFORMER, 5KVA 230-117 volts as shown on "A" excess contract 24932, let 1, item 5A	1 ea.	BuShips Code 680 T4-1509 Mr. F. W. Fitts
	CABLE, electrical TCOP9 in 150' lengths TCOP25 in 200' lengths DCOP4 in 150' lengths	450 ft. 200 ft. 600 ft.	Any Navy Yard
53-B-24900 41-P-2678	9 $\frac{1}{2}$ x 9 $\frac{1}{2}$ x 5 $\frac{5}{8}$ POF, wax dip, electric 110 volts, AC 60 cycle capacity 4 cts. Bobbet Electrical Mfg. Co. #2404 or equiv.	500 ea.	
41-1-691	Soldering Iron	1 ea.	
41-T-3645	Blowtorch, 1 qt. size	1 ea.	
18-8-119b	Scales, platform Extinguishers, Fire	1 ea.	
58-E-194	CO ₂ 15 lb.	3 ea.	
58-E-212	Foam type, 2 $\frac{1}{2}$ gal. Pyrene type, 1 qt.	2 ea. 4 ea.	
41-V-292	Vice, machinists, swivel base & jaw 4" opening	1 ea.	
41-V-538	Vice, woodworking	1 ea.	
41-S-188	Saw, hand crosscut, 26", 8 points per inch	6 ea.	
41-S-398	Saw, hand, rip, 5 $\frac{1}{2}$ points per inch	6 ea.	
41-S-107	Saw, hand compass 12"	6 ea.	
41-S-150	Saw, crosscut, 2 man	1 ea.	
41-B-1892	Brace, ratchet, 10" sweep	6 ea.	

<u>STOCK NO.</u>	<u>ITEMS</u>	<u>QUANTITY</u>	<u>SUPPLIERS</u>
41-B-620	Bits, screwdriver 1/4" point	12 ea.	
41-B-622	Bits, screwdriver 3/8" point	12 ea.	
41-B-623	Bits, screwdriver 1/2" point	12 ea.	
41-B-686	Bits, wood boring auger, hand 1/4"	12 ea.	
41-B-688	Bits, wood, boring auger, hand 3/8"	12 ea.	
41-B-690	Bits, wood boring auger, hand 1/2"	12 ea.	
41-B-692	Bits, wood boring auger, hand 5/8"	12 ea.	
41-B-694	Bits, wood boring auger, hand 3/4"	12 ea.	
41-B-842	Bits, woodboring, expansion 5/8 to 1 3/4"	6 ea.	
41-C-850	Chest, tool, empty wood 32 x 16 x 12	4 ea.	4510
	Truck 6K6 -4 2 1/2 ton 6x6 chassis with cargo body and hoist 20/2 way power take-off.	1 ea.	BuYAD Main Navy. Lt. Comdr. Krogsad 6-2202
	Trailer 6K9-3 Dorsey with 15 K.W. Generator (Okeef & Merritt) switchboard wiring and cabinets as furnished on contract NSX 97135	1 ea.	Boyerton, Pa.
	Loader, Anthony tailgate, lifting capacity 1500 lbs. Installed on 6 x 6 truck furnished by Navy.	1 ea.	"
	Truck, reconnaissance 1/2 ton	1 ea.	Y & D
	Lumber S-4-S, #2 common Ponderosa Pine	60,000 bd. ft.	
	3% 2 x 6		
	3% 4 x 6		
	5% 2 x 4		
	40% 1 x 8		
	49% 1 x 10		
	Supplies, office - as furnished on A-6 Component	1 set	
	Rut, grommet 20 x 48		



PHOTOGRAPH 1. The Mobile Packaging Component. The Trailer Weighs Approximately 15,430 lbs. When Loaded. The Truck is a 6 x 6.



PHOTOGRAPH 2. Equipment and Supplies are Broken Out and the Component is in Full Operation. Notice Conveyors and Stands.



PHOTOGRAPH 3 Lumber Goes Through the Saws Soon becoming
Shooks Man in Center is Assembling the Shooks
the Box



PHOTOGRAPH 4. While Cases are Being Made, Individual Items are Being Treated to Prevent Corrosion. First Dip is for Cleaning and Second for Corrosion Prevention.

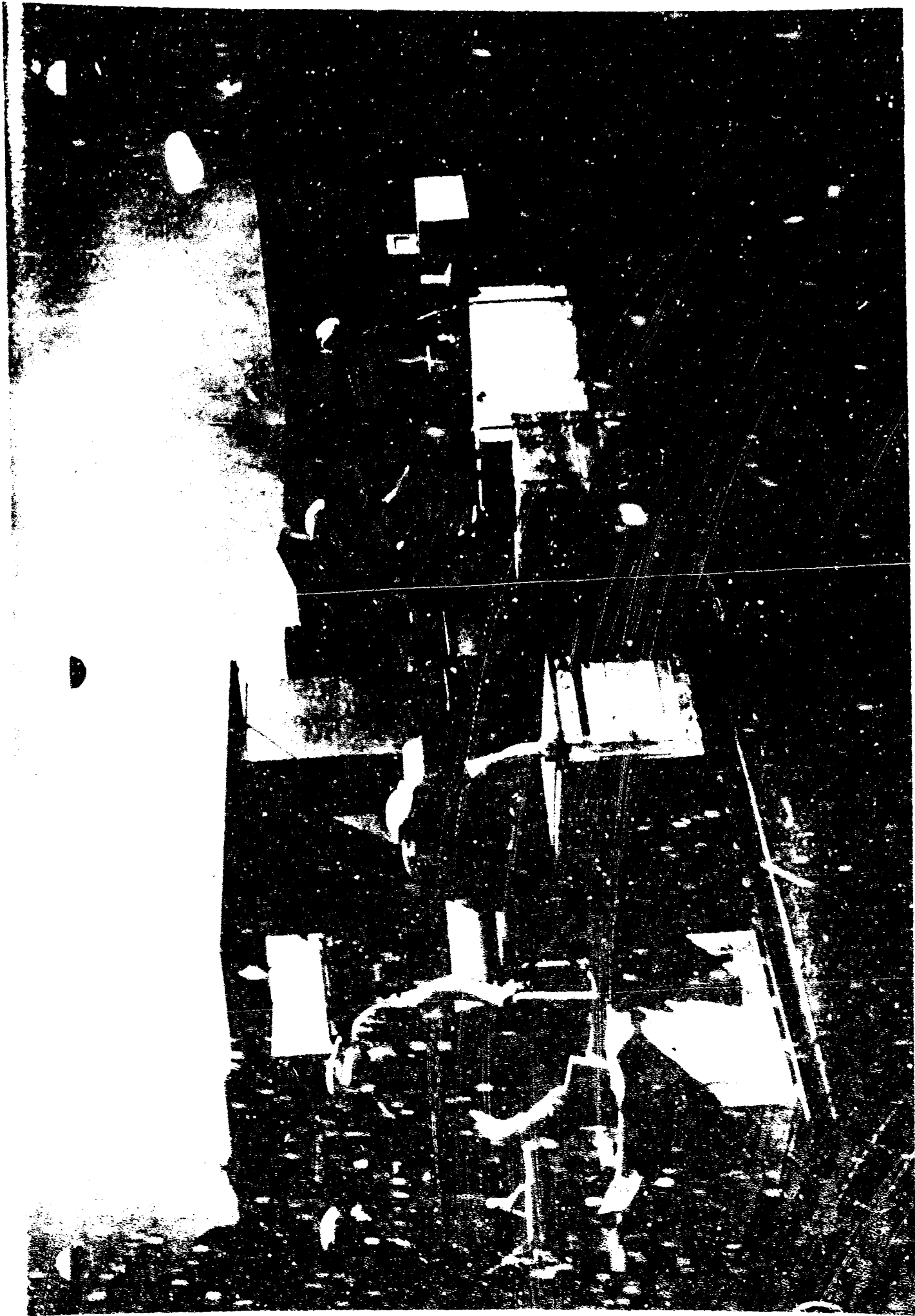


PHOTOGRAPH 5. Grade C Grease-proof, Acid-free Paper Provides Additional Protection. The Wax Dip, Heated by Component Generator is seen in Foreground Gives the Package a 1A Wrap.

...ives the Package a 1A Wrap.

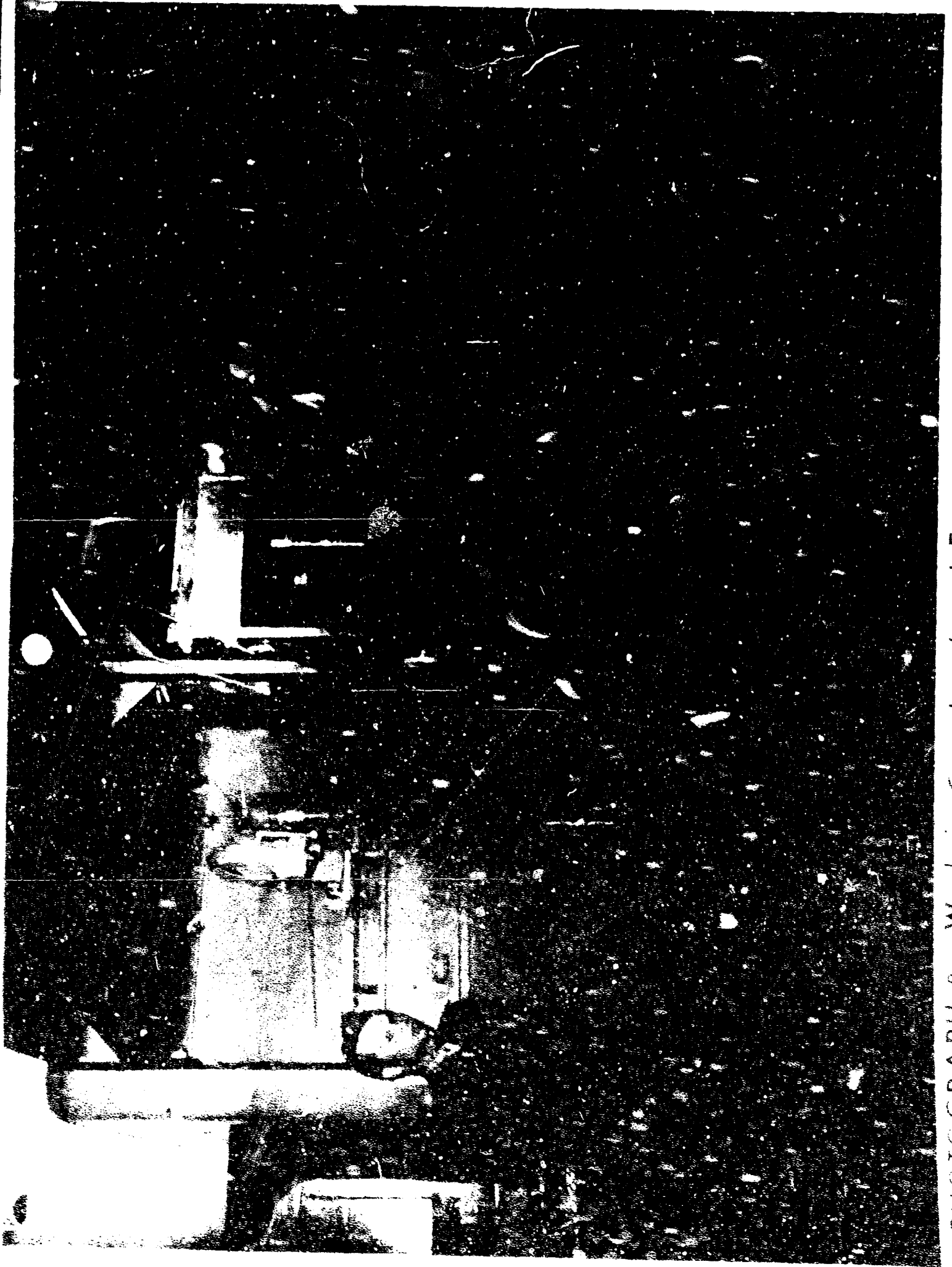


PHOTOGRAPH 6. The Cases Just Made will be Lined with the water-proof Case Liner Being Cut from Roll.
The Paper is X - Crepe.



PHOTOGRAPH 7 This is a conveyor and into the Box Boxes
This is Closed Strapped Stencilled and Addressed
by Conveyor onto pallet

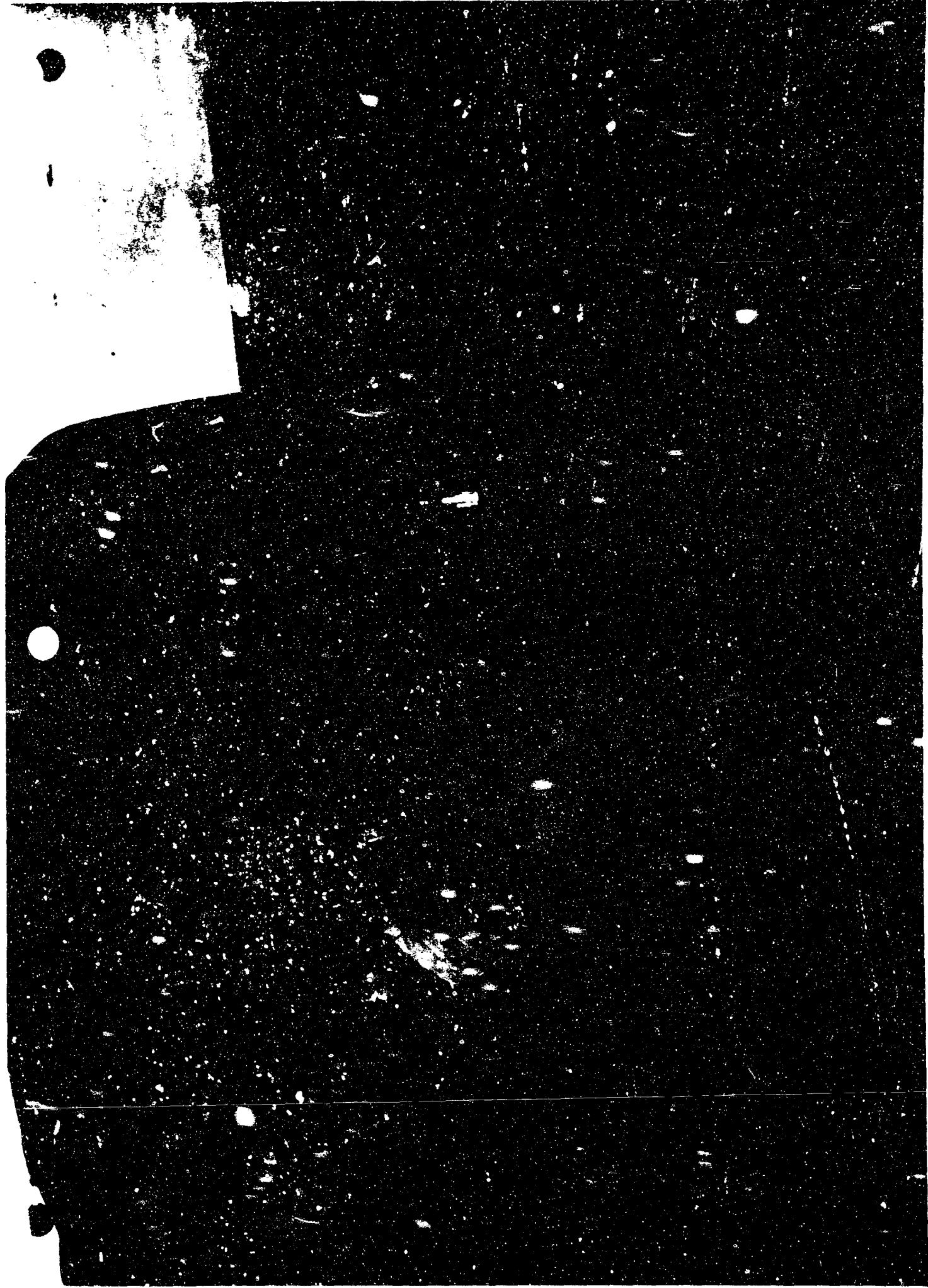
by Conveyor onto pallet



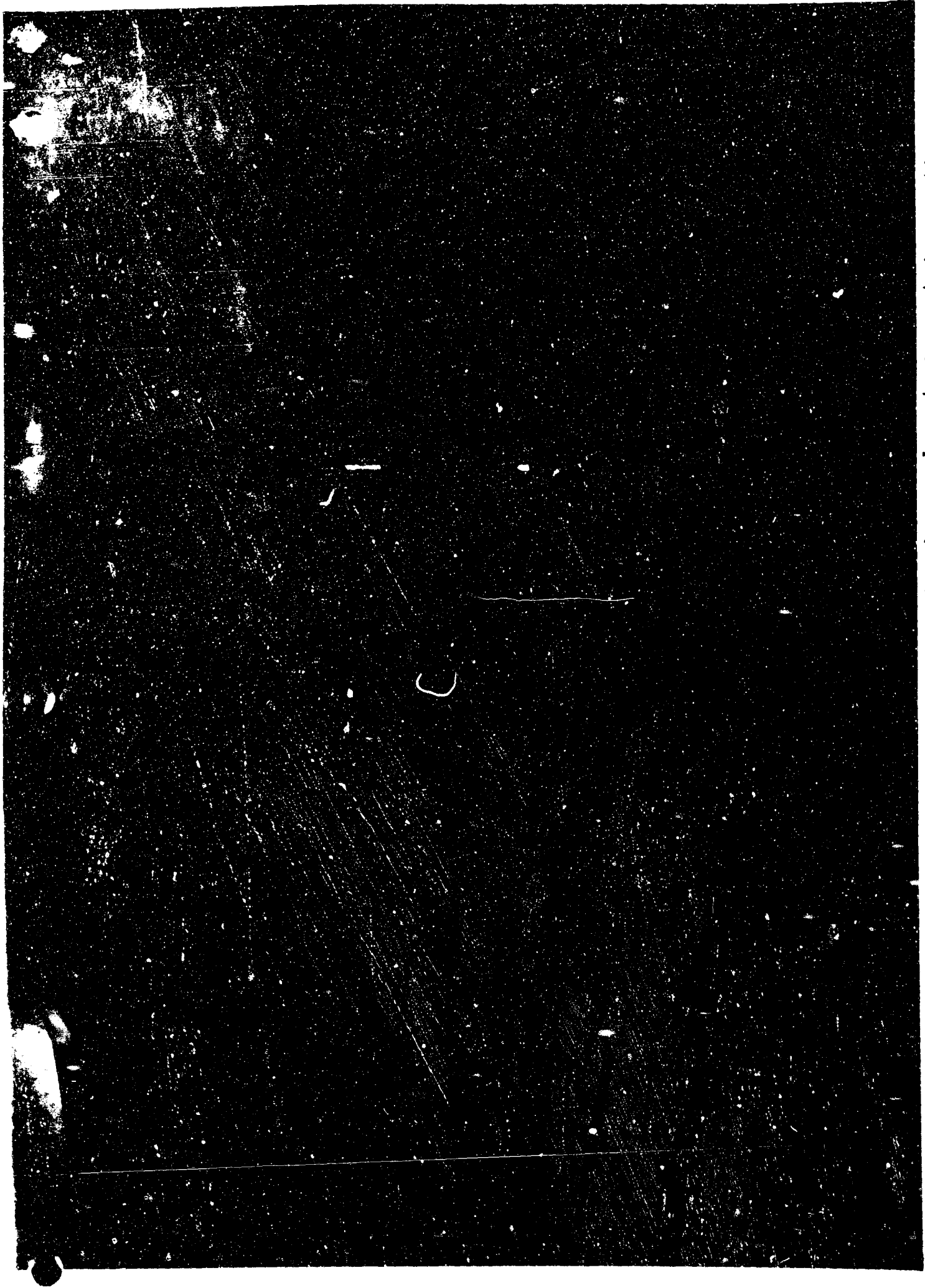
PHOTOGRAPH 8 Work is Completed and Equipment is Returned to Trailer.



PHOTOGRAPH 2. Close-up of Other Side of Generator Shows Generator and Power Switches on Right



**PHOTOGRAPH 10. Truck Takes Equipment Aboard with Hydraulic Elevator.
Rip-saw is Placed on Tail-board.**



PHOTOGRAPH 11 Rip-Saw Being Raised to Truck Level by Officer at Switch.



PHOTOGRAPH 12 Machine on Truck Level is Now Moved Inboard. Tailboard will soon be Closed as on Ordinary Truck.