

CATALOGED BY DDC 442273
AS AD No.

FOR OFFICIAL USE ONLY

Technical Note N-615

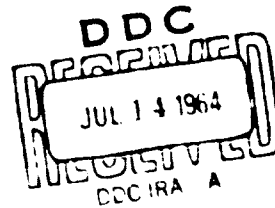
POLAR STRUCTURES -
SPECIFICATIONS AND OUTFITTING FOR A
HEAVY-EQUIPMENT FIELD REPAIR SHELTER

BY

C. E. Sherwood

1 July 1964

442273



U. S. NAVAL CIVIL ENGINEERING LABORATORY
Port Hueneme, California

20050223127

Best Available Copy

Best Available Copy

POLAR STRUCTURES -
SPECIFICATIONS AND OUTFITTING FOR A
HEAVY-EQUIPMENT FIELD REPAIR SHELTER
Y-F015-11-01-105

Type B

by

G. E. Sherwood

ABSTRACT

A heavy-equipment field repair shelter was developed to satisfy the requirement of shelter for maintenance and repair of construction equipment up to Size 6 snow tractors in remote work centers at established polar stations. The shelter is constructed of steel arch ribs with a canvas cover. The basic shelter is 28 by 44 feet with a 12-by 28-foot shop at one end. An expansion unit can be added to the shop end to form a second repair stall. Outfitting for the shelter includes a 4-ton traveling hoist, an electrical harness, an overhead forced-air heater, shop equipment and tools.

This technical note contains the specifications and outfitting for the shelter described in Naval Civil Engineering Laboratory Technical Note N-614, "Polar Structures - Conceptual Design for a Heavy-Equipment Field Repair Shelter."

Qualified requesters may obtain copies of this note from DDC

INTRODUCTION

Experience with field repair shelters in polar regions has shown that large shelters are needed for the repair and maintenance of heavy construction equipment (up to Size 6 snow tractors) commonly used in remote work centers near coastal stations. Limited portability is desirable due to the transient nature of many polar work projects. This technical note contains the specifications for the heavy-equipment field repair shelter developed to satisfy this requirement and outfitting for the shop which is a part of the shelter. Standard specifications referenced in the text are listed in Appendix A.

The shelter is described in Laboratory Technical Note N-614, "Polar Structures - Conceptual Design for a Heavy-Equipment Field Repair Shelter."

SPECIFICATIONS

The heavy-equipment field repair shelter is a canvas-covered, arch-rib structure mounted on skids for limited portability. The frame is steel; the cover is a single thickness of coated nylon. The basic shelter is 28 by 44 feet and is 16 feet high at the haunch of the arch. It has a 28- by 32-foot repair stall and a 28- by 12-foot shop. Eight-foot expansion units can be added to the shop end of the shelter to form a second repair stall. Two-foot-wide skids provide tracks for a traveling hoist, permitting both longitudinal and lateral positioning. A plywood door panel in the side of the shelter is used for personnel entry into the shop area. An electrical harness provides general lighting and outlets. An oil-fired, forced-air heater is mounted overhead in the shop area. This location prevents the heater vents from interfering with movement of the traveling hoist.

The heavy-equipment field repair shelter is detailed in the drawings presented in Appendix B.

1. Scope. The work shall include the furnishing of all material and equipment, and performing all labor for the complete fabrication of the items indicated on the drawings and described and specified herein. The contractor's proposal shall be based on the drawings and

specifications herewith and no deviations shall be accepted except as approved in writing by Contracting Officer.

2. Materials

A. Plywood

(1) For Personnel Entry. Plywood for personnel entry shall conform to Specification NN-P-530a, and shall be grade-marked to indicate conformance with the following requirements:

Douglas Fir, Exterior Type, Grade AC, sanded 2 sides, as per Commercial Standard CS-45 of latest date.

(2) For Shop Floor. Plywood for shop floor shall be 2-4-1 Douglas Fir Plywood, 1-1/8 inches thick, with exterior glue and T&G edges as indicated. All panels shall be stamped with the grade-mark of the Douglas Fir Plywood Association.

B. Steel

(1) Sheet or Strip. Conform to Specification QQ-S-640 FS-102C unless noted otherwise.

(2) Bar Stock. Conform to Specification QQ-S-633a.

(3) Structural. Conform to "Standard Specifications for Structural Steel for Bridges and Buildings," serial designation A-36 of the American Society for Testing Materials.

C. Cloth

(1) For Cover. Conform to Specification MIL-C-43006. Gray color. (Herculite No. 80 as manufactured by Herculite Protective Fabrics, Newark 3, New Jersey, conforms to this specification.)

D. Fastenings

(1) Nails. The nails shall be steel, cement-coated, either standard (coolers) or countersunk head (sinkers) and size as indicated on the drawings, and shall conform to Specification FF-N-105.

(2) Screws.

(a) Wood. Wood screws shall be steel, of the size indicated on the drawings and of style 2c (flat (countersink) head with

cross recess drive) and shall conform to Specification FF-S-111b. Wood screws shall be used only where length requirements are in excess of two (2) inches.

(b) Screws, threaded full length. All screws screwing wood to wood or other materials to wood and where the length requirement is not in excess of two (2) inches shall be a type of screw that is threaded full length. These screws shall be cadmium plated with cross recess-drive and head-type as indicated on the drawings. Type A, Parker Kalon, cadmium-plated screws with Phillips slot conforms to these requirements.

(3) Bolts, Nuts, Washers.

(a) Bolts and nuts, hexagonal. Conform to Specification FF-B-571a, Type B1 and Table V, and nuts Type A1 and Table XII.

(b) Washers. The washers shall be standard commercial cut steel of the type and size indicated on the drawings.

(c) Finishes. All bolts, nuts and washers shall be finished with a zinc coating conforming to Type II or III, Class 2 of Specification QQ-Z-325a or a cadmium plating Type II or III, Class 2 of Specification QQ-P-416a.

(4) Harness Snaps. Standard commercial, steel with square eye, 1 inch, and spring guard cadmium or zinc plated, 3 inch +/- 1/8 inch long.

(5) D-Rings. Standard commercial, steel bright finish, heavy pattern, size as indicated.

(6) Cotter Pins. Conform to Specification FF-P-386b, Type B.

(7) Adhesive A - Wood to Wood. The adhesive used for adhering wood to wood (other than the manufacture of plywood) shall conform to Type I, Grade A, Class 1 of Specification MIL-A-197B.

E. Rope

(1) Conform to Specification T-R 605, Type H, Class 1.

F. Straps

(1) Webbing, Cotton. The webbing for straps shall conform

to Specification MIL-W-530B and shall be Type III, Class 4 of width indicated on the drawings.

(2) Clips, End. The end clips on webbing straps shall be brass, black chemical finish conforming to Type I, (ball type) of Specification JAN-C-496.

(3) Buckles, Slide, With Hook. The buckles shall be made of steel, hot-rolled sheet or strip, condition optional as indicated on the drawings. The buckle shall be heat treated to a hardness of RC-16-22 and shall be free from cracks, scale, and other injurious defects. Case hardening will not be permitted. The buckles shall be given a finish consisting of a phosphate-treated zinc plate, conforming to Class 3, Type III of Specification QQ-Z-325, followed by bake enameling. The enamel shall conform to Type II, Specification JAN-E-480, in a black color. The coatings shall level out to a uniform dry film thickness of 0.25 mils minimum without objectionable orange peel, wrinkles, drops, streaks, or areas of thin or no film.

G. Coating

(1) Galvanizing. Conform to Specification QQ-Z-325a, Type II, Class I zinc coating.

(2) Cadmium Plating. Conform to Specification QQ-P-416a, Class I, Type II.

H. Paint

(1) Primer. The primer shall conform to Specification TT-P-636b.

(2) Enamel. The enamel shall conform to Specification TT-E-529a, Class A. The color shall be No. 24087, Table VI of Standard FED-STD-595.

I. Hardware

(1) Hinges. All hinges shall conform to Specification FF-H-116c, 2-inch Continuous Type 2175F.

(2) Latch and Keeper. Latch and keeper for doors shall be a type easily operated from either inside or outside of the door. Latch and keeper shall be substantially the type indicated on the drawings, easily operated by a person wearing polar-type mittens, but any

acceptable latch that meets the necessary requirements may be used upon the approval of the Contracting Officer. (The Vonnegut No. 25 latch, as manufactured by Vonnegut Hardware Co., Indianapolis, Indiana, meets the requirements of this specification.)

J. Electrical

(1) Materials. Materials listed below shall conform to the specifications as noted:

<u>Materials</u>	<u>Specification</u>
(a) <u>Wire connectors</u>	W-S-610
Types I, Class B & A, Style 3 or 4, Type II, Class A.	
(b) <u>Fittings, cable and conduit</u>	W-F-406a
Type I, Class 1, Style A; Type I, Class 3, Style A; Type V, Class 1, Style A.	
<u>Fittings, electric</u>	
Metallic tubing, Type I, Class B, Item 12.	
(c) <u>Outlet boxes</u>	W-J-800a
Type I, Size A, Style 1; Type I, Size C, Style 8; Type II, Size 8, Style 10; Type II, Size E, Style 13; Type II, Size G, Style 18;	

<u>Materials</u>	<u>Specification</u>
Type IV, Size K, Style 20; Type VIII, Size S, Style 43; Type VIII, Size S, Style 44; Type VIII, Size U, Style 52; 54; 56; 57; 58; Type VIII, Size S, Style 49.	W-J-800a
(d) <u>Panelboards</u>	W-P-131a(2)
Class A-1, A-2, and A-4 as indicated on drawings and conform to Table III.	
(e) <u>Receptacles and plugs</u>	W-C-596
Style, Series D except with pressure-type terminals.	
(f) <u>Conduit, steel, flexible</u>	W-C-566a
Sizes as indicated.	
(g) <u>Conduit, steel, rigid</u>	WW-C-581c
Sizes as indicated.	
(h) <u>Nipples</u>	WW-N-351a
Type I, sizes as indicated.	

(2) Conductors.

(a) Building conductors. Conductors in buildings shall be copper, of size indicated, color coded; insulation to be of a type to withstand bending at -50 F without damage.

(b) Overhead conductors. Overhead distribution conductors shall be aluminum of size indicated; insulation to be of a type to withstand bending at -50 F without damage.

(3) Lighting Fixtures. Conform to Specification 9Yh.

(4) Hardware, Electrical Equipment Mounting.

(a) Spring clip mounting brackets. (Enrico Products, Inc., Cleveland, Ohio, "GAT" No. 12-m-2-4.)

(b) Spring clip conduit hanger. (Enrico Products, Inc., Cleveland, Ohio, "GAT" No. 12-m-2-4.)

(c) Spring clip support bracket with hook. (Enrico Products, Inc., Cleveland, Ohio, "GAT" No. 2-FMP-28 with 2-CH-16 hook.)

(5) Fixture Hook. 1/2-inch N.P.T. with cable passage. (Crouse Hinds Co., Syracuse, New York, No. 1NH16 conforms to this specification.)

(6) Outlet Box Cover, Aligner. (Benjamin Electric Manufacturing Company, Des Plaines, Illinois, No. 3385 conforms to this specification.)

3. Fabrication

A. Shelter

(1) Frame. The steel framing shall be A-36 steel and fabrication shall conform to American Institute of Steel Construction Specifications. Welding shall be by electric-arc process by qualified and certified welders using approved and proper electrodes in accordance with ASTM-A233 and AWS specifications. Wood nailers on floor beams and floor struts shall be installed by the fabricator after all members are painted. All steel members, after fabrication and welding, and all wood members before installation, shall receive one coat of primer and two coats of enamel. Cleaning of steel before painting shall be in accordance with Specification MIL-T-704C, Type A.

(2) Cover. The cover shall be fabricated of coated nylon in accordance with the details. Color shall be gray both sides of white inside and gray outside. Thread shall be Dacron and stitching shall conform to Federal Standard 751, Type 301. Where reinforcing is indicated, it shall be a double thickness of the cloth in addition

to the base cloth. The patch shall be securely stitched to prevent tear-out and all cut edges shall be turned under and stitched. All stitching shall be sealed with clear liquid vinyl.

B. Standard Outfitting

(1) Electrical. The electrical assemblies shall be fabricated in accordance with the details. Each of the items shall be complete and ready for field assembly.

(2) Side Entry. The side entry panel shall be fabricated of Douglas Fir Plywood. It is designed so that the door may swing in or out as desired. Where floor occurs, the door must swing out. All contact surfaces between wood and wood shall be glued with Adhesive A and secured with screws as indicated. After fabrication and before assembly, all surfaces except those in contact, shall receive one coat of primer and two coats of enamel.

C. Shop Floor

(1) Floor Panels. The plywood floor panels shall be standard 4 by 8 foot by 1-1/8 inch as indicated on the drawings. No fabrication is required. All surfaces, including edges, of plywood panels shall receive one coat of primer and two coats of enamel.

OUTFITTING

The 12- by 28-foot shop is located at one end of the basic heavy-equipment field repair shelter. The shop floor made of 1-1/8-inch tongue and groove plywood supported on steel I beams is designed to support 150 psi. An electric harness is included in the standard outfitting for the shelter. The 4-ton traveling hoist can be used in the shop as well as in the repair stalls.

<u>Item</u>	<u>Quantity</u>	<u>Source</u>
<u>Fixed Shop Equipment</u>		
Heater, oil-fired, forced-air, horizontal, output range 280,000 to 392,000 Btuh	1	Commercial
Workbench, cabinet-type 72" x 28" x 32"	2	Commercial
Storage bins, eight-compartment 81-1/2" x 30-1/2" x 18-3/4"	2	Federal Stock
Vice, machinist	1	Commercial
Grinder, heavy-duty, pedestal-mounted, electric-drive, with adjustable eye shields; one coarse and one medium wheel, 1/3-hp motor, 110-volt, 60-cycle, single-phase	1	Commercial
Compressor, air, portable, electric drive, single-stage, 3.1 cfm at 150#, 20-gal tank, automatic no-load start, automatic cut-on and cut-off, 1-hp motor, 110-volt, 60-cycle, single-phase	1	Commercial
Lubricating unit, power-operated	1	Federal Stock
Valve grinder	1	Federal Stock

<u>Item</u>	<u>Quantity</u>	<u>Source</u>
Torch outfit, cutting and welding, oxygen gauge, acetylene gauge, 50-ft dual hose, cutting tips #101-0-1-2-3, welding tips - 0-1-2-3-4-5-6-7-8-9, cutting goggles fling lighter	1	Commercial
Truck, hand, two-wheeled, for welding cylinders	1	Federal Stock
Tool chest, mechanic, seven-drawer	1	Commercial
Tool chest, heavy-duty, seven-drawer	1	Commercial
Cabinet, tool, four-drawer, with casters	1	Commercial
Cart, tool, two-shelf, four-drawer, with casters, 24" x 18" x 34"	1	Commercial
<u>Portable Shop Equipment</u>		
Grease gun, hand, lever-operated	1	Federal Stock
Gun, fluid, direct-delivery	1	Federal Stock
Oiler, hand, forced-feed	1	Federal Stock
Clamps, "C", 2" x 1-3/4" throat	1	Federal Stock
4" x 2-1/4" throat	1	Federal Stock
6" x 2-3/4" throat	1	Federal Stock
Wrench, impact, electric	1	Commercial
Jack, hydraulic, 10-ton	1	Commercial
Jack, hydraulic, 5-ton	2	Commercial
Bar, pinch, 5'	1	Federal Stock
Bar, wrecking, 18"	1	Federal Stock

<u>Item</u>	<u>Quantity</u>	<u>Source</u>
Caliper, inside, spring-joint, 6"	1	Federal Stock
Caliper, outside, spring-joint, 6"	1	Federal Stock
Compressor, piston ring	1	Federal Stock
Dividers, mechanic, steel	1	Federal Stock
Stone, sharpening, mounted	1	Federal Stock
Tool kit, carpenter, w/chest	1	Commercial
Blow torch, gasoline, 1-pt cap	1	Federal Stock
Carrier, storage battery	1	Federal Stock
Tachometer, mechanical, continuous	1	Federal Stock
Hammer, hand, sledge, double-faced, 8-lb	1	Federal Stock
Drill, electric, portable, 3/4" hand-style 6, w/stand	1	Federal Stock
Tool kit, diesel injector repair	1	Federal Stock
Brazing alloy, silver, 6-oz	1	Federal Stock
Flux, brazing, silver, 8-oz	1	Federal Stock
Cleaner set, welding and cutting tips	1	Federal Stock
Cutter, pipe, 2" to 3/8"	1	Federal Stock
Threading set, pipe, RHT	1	Federal Stock
Wrench, pipe, 6"	1	Federal Stock
Wrench, pipe, 8"	1	Federal Stock

<u>Item</u>	<u>Quantity</u>	<u>Source</u>
Wrench, pipe, 10"	2	Federal Stock
Wrench, pipe, 14"	2	Federal Stock
Shears, metal-cutting, LH, 10"	1	Federal Stock
Shears, metal-cutting, RH, 10"	1	Federal Stock
Shears, metal-cutting, straight, 10"	1	Federal Stock
Puller kit, mechanical, w/case	1	Federal Stock
Face shield for grinder, 8" visor	1	Commercial
Dresser, abrasive wheel, hand	1	Federal Stock
Cutter, bolt, 1/2" capacity	1	Federal Stock
Cutter, tube, 1/8" to 1-1/8" OD w/deburring tool	1	Federal Stock
Blowgun, airline	1	Commercial
Engine cylinder compression gauge	1	Commercial

Hand Tools

Hammer, hand, sledge, double-faced, 4-lb	1	Federal Stock
Drill, electric, portable, 1/4", hand-style	1	Federal Stock
Drill, electric, portable, 1/2", hand-style 6, w/stand	1	Federal Stock
Brush, wire, carbon-cleaning, for 1/4" drill	2	Federal Stock
Arbor, hole saw, #1	1	Federal Stock
Arbor, hole saw, #2	1	Federal Stock

<u>Item</u>	<u>Quantity</u>	<u>Source</u>
Arbor, hole saw, #3	1	Federal Stock
Blade, hole saw, 5/8"	1	Federal Stock
Blade, hole saw, 3/4"	1	Federal Stock
Blade, hole saw, 7/8"	1	Federal Stock
Blade, hole saw, 1"	1	Federal Stock
Blade, hole saw, 1-1/16"	1	Federal Stock
Blade, hole saw, 1-1/8"	1	Federal Stock
Blade, hole saw, 1-1/4"	1	Federal Stock
Blade, hole saw, 1-3/8"	1	Federal Stock
Blade, hole saw, 1-1/2"	1	Federal Stock
Blade, hole saw, 1-5/8"	1	Federal Stock
Blade, hole saw, 1-3/4"	1	Federal Stock
Blade, hole saw, 1-7/8"	1	Federal Stock
Blade, hole saw, 2"	1	Federal Stock
Threading set, screw, RHT, N.F. 1/4" to 1"	1	Federal Stock
Threading set, screw, RHT, N.C. 3-48 to 12-24	1	Federal Stock
Square, combination, grooved- type, 12"	1	Federal Stock
Caliper set, micrometer, outside and inside C-5"	1	Federal Stock
Restorer set, thread	1	Federal Stock
Chaser set, thread, internal 4-24 thd/inch	1	Federal Stock

<u>Item</u>	<u>Quantity</u>	<u>Source</u>
Soldering gun, electric	1	Federal Stock
Tip, electric soldering gun (box)	1	Federal Stock
Soldering iron, electric, 5/8", pyramid-point	1	Federal Stock
Soldering iron, electric, pencil-type	1	Federal Stock
Wrench, torque, 1/2" drive, 5-75 ft-lb	1	Federal Stock
Wrench, torque, 1/2" drive, 5-250 ft-lb	1	Federal Stock
Battery booster cable	1	Commercial
Timing light with spare bulb	1	Commercial
Extractor set, screw	1	Federal Stock
Valve spring compressor, C-clamp type, adjustable	1	Federal Stock
Wrench, open-end, adjustable, 24"	1	Commercial
Hole cutter, adjustable	1	Commercial

<u>Item</u>	<u>Quantity</u>		<u>Source</u>
	<u>Heavy Duty Tool Box</u>	<u>Standard Tool Box</u>	
Socket wrench set, 1/4" sq drive, consisting of:			
Handle, spinner		1	Federal Stock
Socket, regular 8-point, 1/4"		1	Federal Stock
Socket, regular 8-point, 5/16"		1	Federal Stock
Socket, regular 8-point, 3/8"		1	Federal Stock
Socket, regular 6-point, 3/16"		1	Federal Stock
Socket, regular 6-point, 7/32"		1	Federal Stock
Socket, regular 6-point, 1/4"		1	Federal Stock
Socket, regular 6-point, 9/32"		1	Federal Stock
Socket, regular 6-point, 5/16"		1	Federal Stock
Socket, regular 6-point, 11/32"		1	Federal Stock
Socket, regular 6-point, 3/8"		1	Federal Stock
Socket, regular 6-point, 7/16"		1	Federal Stock
Socket, regular 6-point, 1/2"		1	Federal Stock
Adapter, 1/4" female drive to 3/8" male drive		1	Federal Stock
Socket wrench set, 3/8" sq drive, consisting of:			
Handle, ratchet	1	1	Federal Stock
Handle, speeder	1	1	Federal Stock
Handle, sliding tee	1	1	Federal Stock

<u>Item</u>	<u>Quantity</u>		<u>Source</u>
	<u>Heavy Duty Tool Box</u>	<u>Standard Tool Box</u>	
Handle, nut spinner	1	1	Federal Stock
Handle, plastic	1	1	Federal Stock
Handle, flexible extension	1	1	Commercial
Ratchet, spinner	1	1	Commercial
Ratchet, adapter	1	1	Federal Stock
Extension bar, 1-1/2"	1	1	Federal Stock
Extension bar, 6"	1	1	Federal Stock
Extension bar, 12"	1	1	Federal Stock
Universal joint	1	1	Federal Stock
Adapter, 3/8" female drive to 1/4" male drive		1	Federal Stock
Adapter, 3/8" female drive to 1/2" male drive		1	Federal Stock
Socket wrench set, 3/8" sq drive, consisting of:			
Socket, regular 8-point, 1/4"	1	1	Federal Stock
Socket, regular 8-point, 5/16"	1	1	Federal Stock
Socket, regular 8-point, 3/8"	1	1	Federal Stock
Socket, regular 8-point, 7/16"	2	1	Federal Stock
Socket, regular 8-point, 1/2"	1	1	Commercial
Socket, regular 6-point, 1/4"	1	1	Commercial
Socket, regular 6-point, 5/16"	1	1	Commercial

<u>Item</u>	<u>Quantity</u>		<u>Source</u>
	<u>Heavy Duty Tool Box</u>	<u>Standard Tool Box</u>	
Socket, regular 12-point, 3/8"	1	1	Federal Stock
Socket, regular 12-point, 7/16"	1	1	Federal Stock
Socket, regular 12-point, 1/2"	1	1	Federal Stock
Socket, regular 12-point, 9/16"	1	1	Federal Stock
Socket, regular 12-point, 19/32"	1	1	Federal Stock
Socket, regular 12-point, 5/8"	1	1	Federal Stock
Socket, regular 12-point, 11/16"	1	1	Federal Stock
Socket, regular 12-point, 3/4"	1	1	Federal Stock
Socket, regular 12-point, 13/16"	1	1	Federal Stock
Socket, regular 12-point, 7/8"	1	1	Federal Stock
Socket, deep, 12-point, 3/8"	1	1	Federal Stock
Socket, deep, 12-point, 7/16"	1	1	Federal Stock
Socket, deep, 12-point, 1/2"	1	1	Federal Stock
Socket, deep, 12-point, 9/16"	1	1	Federal Stock
Socket, deep, 12-point, 19/32"	1	1	Federal Stock
Socket, deep, 12-point, 5/8"	1	1	Federal Stock
Socket, deep, 12-point 11/16"	1	1	Federal Stock
Socket, deep, 12-point, 3/4"	1	1	Federal Stock
Socket, deep, 12-point, 13/16"	1	1	Federal Stock
Socket, deep, 12-point, 7/8"	1	1	Federal Stock
Socket, deep, 12-point, 15/16"	1	1	Federal Stock

<u>Item</u>	<u>Quantity</u>		<u>Source</u>
	<u>Heavy Duty Tool Box</u>	<u>Standard Tool Box</u>	
Socket, deep, 12-point, 1"	1	1	Federal Stock
Socket, flexible, regular 6-point, 3/8"	1	1	Federal Stock
Socket, flexible, regular 6-point, 7/16"	1	1	Federal Stock
Socket, flexible, regular 6-point, 1/2"	1	1	Federal Stock
Socket, flexible, regular 6-point, 5/8"	1	1	Federal Stock
Socket, flexible, regular 6-point, 11/16"	1	1	Federal Stock
Socket, flexible, regular 6-point, 3/4"	1	1	Federal Stock
Socket, flexible, regular 6-point, 7/8"	1	1	Federal Stock
Socket wrench set, 1/2" sq drive, consisting of:			
Handle, flex, 18"	1	1	Commercial
Handle, sliding tee	1	1	Federal Stock
Handle, speeder, 19"	1	1	Federal Stock
Handle, ratchet, 10"	1	1	Federal Stock
Handle, ratchet, 15"	1	1	Federal Stock
Ratchet, spinner	1		Commercial
Ratchet, adapter	1	1	Federal Stock
Universal joint	1	1	Federal Stock

<u>Item</u>	<u>Quantity</u>		<u>Source</u>
	<u>Heavy Duty Tool Box</u>	<u>Standard Tool Box</u>	
Bar, extension, 2"	1	1	Federal Stock
Bar, extension, 3-1/2"	1	1	Federal Stock
Bar, extension, 5"	1	1	Federal Stock
Bar, extension, 10"	1	1	Federal Stock
Drag link adjuster	1		Federal Stock
Stud remover	1		Commercial
Adapter, 1/2" female drive to 3/8" male drive		1	Federal Stock
Adapter, 1/2" female drive to 3/4" male drive		1	Federal Stock
Socket, regular, 8-point, 3/8"	1	1	Federal Stock
Socket, regular, 8-point, 7/16"	1	1	Federal Stock
Socket, regular, 8-point, 1/2"	1	1	Federal Stock
Socket, regular, 8-point, 9/16"	1	1	Federal Stock
Socket, regular, 8-point, 5/8"	1		Federal Stock
Socket, regular, 8-point, 11/16"	1		Federal Stock
Socket, regular, 8-point, 3/4"	1		Federal Stock
Socket, regular, 8-point, 13/16"	1		Federal Stock
Socket, regular, 8-point, 7/8"	1		Federal Stock
Socket, regular, 8-point, 15/16"	1		Federal Stock
Socket, regular, 8-point, 1"	1		Federal Stock
Socket, regular, 6-point, 7/16"	1		Commercial

<u>Item</u>	<u>Quantity</u>		<u>Source</u>
	<u>Heavy Duty Tool Box</u>	<u>Standard Tool Box</u>	
Socket, regular, 6-point, 1/2"	1		Commercial
Socket, regular, 6-point, 9/16"	1		Commercial
Socket, regular, 6-point, 5/8"	1		Commercial
Socket, regular, 6-point, 11/16"	1		Commercial
Socket, regular, 6-point, 3/4"	1		Commercial
Socket, regular, 6-point, 13/16"	1		Commercial
Socket, regular, 6-point, 7/8"	1		Commercial
Socket, regular, 6-point, 15/16"	1		Commercial
Socket, regular, 6-point, 1"	1		Commercial
Socket, regular, 6-point, 1-1/16"	1		Commercial
Socket, regular, 12-point, 3/8"	1	1	Federal Stock
Socket, regular, 12-point, 7/16"	1	1	Federal Stock
Socket, regular, 12-point, 1/2"	1	1	Federal Stock
Socket, regular, 12-point, 9/16"	1	1	Federal Stock
Socket, regular, 12-point, 19/32"	1	1	Federal Stock
Socket, regular, 12-point, 5/8"	1	1	Federal Stock
Socket, regular, 12-point, 11/16"	1	1	Federal Stock
Socket, regular, 12-point, 3/4"	1	1	Federal Stock
Socket, regular, 12-point, 25/32"	1	1	Federal Stock
Socket, regular, 12-point, 13/16"	1	1	Federal Stock
Socket, regular, 12-point, 7/8"	1	1	Federal Stock
Socket, regular, 12-point, 29/32"	1	1	Federal Stock

<u>Item</u>	<u>Quantity</u>		<u>Source</u>
	<u>Heavy Duty Tool Box</u>	<u>Standard Tool Box</u>	
Socket, regular, 12-point, 15/16"	1	1	Federal Stock
Socket, regular, 12-point, 1"	1	1	Federal Stock
Socket, regular, 12-point, 1-1/16"	1	1	Federal Stock
Socket, regular, 12-point, 1-1/8"	1	1	Federal Stock
Socket, regular, 12-point, 1-3/16"	1	1	Federal Stock
Socket, regular, 12-point, 1-1/4"	1	1	Federal Stock
Socket, regular, 12-point, 1-5/16"	1		Commercial
Socket, deep, 6-point, 1/2"	1		Commercial
Socket, deep, 6-point, 9/16"	1		Commercial
Socket, deep, 6-point, 5/8"	1		Commercial
Socket, deep, 6-point, 11/16"	1		Commercial
Socket, deep, 6-point, 3/4"	1		Commercial
Socket, deep, 6-point, 13/16"	1		Commercial
Socket, deep, 6-point, 7/8"	1		Commercial
Socket, deep, 6-point, 1"	1		Commercial
Socket, deep, 12-point, 1/2"	1		Commercial
Socket, deep, 12-point, 9/16"	1		Commercial
Socket, deep, 12-point, 5/8"	1		Commercial
Socket, deep, 12-point, 11/16"	1		Commercial
Socket, deep, 12-point, 3/4"	1		Commercial
Socket, deep, 12-point, 13/16"	1		Federal Stock

<u>Item</u>	<u>Quantity</u>		<u>Source</u>
	<u>Heavy Duty Tool Box</u>	<u>Standard Tool Box</u>	
Socket, deep, 12-point, 7/8"	1		Federal Stock
Socket, deep, 12-point, 15/16"	1		Federal Stock
Socket, deep, 12-point, 1"	1		Federal Stock
Socket, deep, 12-point, 1-1/16"	1		Federal Stock
Socket, deep, 12-point, 1-1/8"	1		Federal Stock
Socket, flexible, 6-point, 9/16"	1		Commercial
Socket, flexible, 6-point, 5/8"	1		Commercial
Socket, flexible, 6-point, 11/16"	1		Commercial
Socket, flexible, 6-point, 3/4"	1		Commercial
Socket, flexible, 6-point, 13/16"	1		Commercial
Socket, flexible, 6-point, 7/8"	1		Commercial
Socket wrench set, 3/4" sq drive, consisting of:			
Handle, ratchet	1		Federal Stock
Handle, flex	1		Federal Stock
Sliding tee head	1		Federal Stock
Ratchet, adapter	1		Federal Stock
Bar, extension, 3"	1		Federal Stock
Bar, extension, 6"	1		Federal Stock
Bar, extension, 16"	1		Federal Stock
Adapter, 3/4" female drive to 1/2" male drive	1		Federal Stock

<u>Item</u>	<u>Quantity</u>		<u>Source</u>
	<u>Heavy Duty Tool Box</u>	<u>Standard Tool Box</u>	
Socket, regular, 12-point, 15/16"	1		Federal Stock
Socket, regular, 12-point, 31/32"	1		Federal Stock
Socket, regular, 12-point, 1"	1		Federal Stock
Socket, regular, 12-point, 1-1/16"	1		Federal Stock
Socket, regular, 12-point, 1-1/8"	1		Federal Stock
Socket, regular, 12-point, 1-3/16"	1		Federal Stock
Socket, regular, 12-point, 1-1/4"	1		Federal Stock
Socket, regular, 12-point, 1-5/16"	1		Federal Stock
Socket, regular, 12-point, 1-3/8"	1		Federal Stock
Socket, regular, 12-point, 1-7/16"	1		Federal Stock
Socket, regular, 12-point, 1-1/2"	1		Federal Stock
Socket, regular, 12-point, 1-9/16"	1		Federal Stock
Socket, regular, 12-point, 1-5/8"	1		Federal Stock
Socket, regular, 12-point, 1-11/16"	1		Federal Stock
Socket, regular, 12-point, 1-3/4"	1		Federal Stock
Socket, regular, 12-point, 1-13/16"	1		Federal Stock
Socket, regular, 12-point, 1-7/8"	1		Federal Stock
Socket, regular, 12-point, 2"	1		Federal Stock
Wrench, box, double offset, long, 12-point, 3/8" & 7/16"	1	1	Federal Stock
Wrench, box, double offset, long, 12-point, 7/16" & 1/2"	1		Federal Stock

<u>Item</u>	<u>Quantity</u>		<u>Source</u>
	<u>Heavy Duty Tool Box</u>	<u>Standard Tool Box</u>	
Wrench, box, double offset, long, 12-point, 1/2" & 9/16"	1	1	Federal Stock
Wrench, box, double offset, long, 12-point, 9/16" & 5/8"	1		Federal Stock
Wrench, box, double offset, long, 12-point, 19/32" & 11/16"	1	1	Federal Stock
Wrench, box, double offset, long, 12-point, 5/8" & 11/16"	1		Federal Stock
Wrench, box, double offset, long, 12-point, 5/8" & 3/4"	1	1	Federal Stock
Wrench, box, double offset, long, 12-point, 11/16" & 13/16"	1		Federal Stock
Wrench, box, double offset, long, 12-point, 3/4" & 7/8"	1	1	Federal Stock
Wrench, box, double offset, long, 12-point, 25/32" & 13/16"	1	1	Federal Stock
Wrench, box, double offset, long, 12-point, 7/8" & 15/16"	1	1	Federal Stock
Wrench, box, double offset, long, 12-point, 15/16" & 1"	1		Federal Stock
Wrench, box, double offset, long, 12-point, 1" & 1-1/8"	1	1	Federal Stock
Wrench, box, double offset, long, 12-point, 1-1/16" & 1-1/8"	1		Federal Stock
Wrench, box, double offset, long, 12-point, 1-1/16" & 1-1/4"	1	1	Federal Stock
Wrench, box, double offset, long, 12-point, 1-3/16" & 1-5/16"	1		Federal Stock

<u>Item</u>	<u>Quantity</u>		<u>Source</u>
	<u>Heavy Duty Tool Box</u>	<u>Standard Tool Box</u>	
Wrench, box, double offset, long 12-point, 1-1/4" & 1-3/8"	1		Federal Stock
Wrench, box, double offset, long, 12-point, 1-3/8" & 1-1/2"	1		Federal Stock
Wrench, box, double offset, long, 12-point, 1-7/16" & 1-3/8"	1		Federal Stock
Wrench, box, double offset, short, 12-point, 5/16" & 3/8"	1		Federal Stock
Wrench, box, double offset, short, 12-point, 3/8" & 7/16"	1		Federal Stock
Wrench, box, double offset, short, 12-point, 7/16" & 1/2"	1		Federal Stock
Wrench, box, double offset, short, 12-point, 1/2" & 9/16"	1		Federal Stock
Wrench, box, double offset, short, 12-point, 9/16" & 5/8"	1		Federal Stock
Wrench, box, double offset, short, 12-point, 5/8" & 3/4"	1		Federal Stock
Wrench, box, double offset, short, 12-point, 11/16" & 13/16"	1		Federal Stock
Wrench, box and open end combina- tion, long handle, 12-point, 3/8"	1	1	Federal Stock
Wrench, box and open end combina- tion, long handle, 12-point, 7/16"	1	1	Federal Stock
Wrench, box and open end combina- tion, long handle, 12-point, 1/2"	1	1	Federal Stock
Wrench, box and open end combina- tion, long handle, 12-point, 9/16"	1	1	Federal Stock

<u>Item</u>	<u>Quantity</u>		<u>Source</u>
	<u>Heavy Duty Tool Box</u>	<u>Standard Tool Box</u>	
Wrench, box and open end combination, long handle, 12-point, 5/8"	1	1	Federal Stock
Wrench, box and open end combination, long handle, 12-point, 11/16"	1	1	Federal Stock
Wrench, box and open end combination, long handle, 12-point, 3/4"	1	1	Federal Stock
Wrench, box and open end combination, long handle, 12-point, 13/16"	1	1	Federal Stock
Wrench, box and open end combination, long handle, 12-point, 7/8"	1	1	Federal Stock
Wrench, box and open end combination, long handle, 12-point, 15/16"	1	1	Federal Stock
Wrench, box and open end combination, long handle, 12-point, 1"	1	1	Federal Stock
Wrench, open-end, double offset, short handle, 11/64" & 15/64"		1	Federal Stock
Wrench, open-end, double offset, short handle, 15/64" & 13/64"		1	Federal Stock
Wrench, open-end, double offset, short handle, 7/32" & 1/4"		1	Federal Stock
Wrench, open-end, double offset, short handle, 9/32" & 5/16"		1	Federal Stock
Wrench, open-end, double offset, short handle, 15/16" & 9/32"		1	Federal Stock
Wrench, open-end, double offset, short handle, 11/32" & 3/8"		1	Federal Stock
Wrench, open-end, double offset, short handle, 3/8" & 11/32"		1	Federal Stock

<u>Item</u>	<u>Quantity</u>		<u>Source</u>
	<u>Heavy Duty Tool Box</u>	<u>Standard Tool Box</u>	
Wrench, open-end, double offset, long handle, 1/4" & 5/16"	1	1	Federal Stock
Wrench, open-end, double offset, long handle, 5/16" & 3/8"	1	1	Federal Stock
Wrench, open-end, double offset, long handle, 3/8" & 7/16"	1	1	Federal Stock
Wrench, open-end, double offset; long handle, 7/16" & 1/2"	1	1	Federal Stock
Wrench, open-end, double offset, long handle, 1/2" & 9/16"	1	1	Federal Stock
Wrench, open-end, double offset, long handle, 9/16" & 5/8"	1	1	Federal Stock
Wrench, open-end, double offset, long handle, 19/32" & 11/16"	1	1	Federal Stock
Wrench, open-end, double offset, long handle, 5/8" & 11/16"	1	1	Federal Stock
Wrench, open-end, double offset, long handle, 5/8" & 3/4"	1	1	Federal Stock
Wrench, open-end, double offset, long handle, 11/16" & 3/4"	1	1	Federal Stock
Wrench, open-end, double offset, long handle, 3/4" & 7/8"	1	1	Federal Stock
Wrench, open-end, double offset, long handle, 25/32" & 13/16"	1	1	Federal Stock
Wrench, open-end, double offset, long handle, 7/8" & 15/16"	1	1	Federal Stock
Wrench, open-end, double offset, long handle, 15/16" & 1"	1	1	Federal Stock

<u>Item</u>	<u>Quantity</u>		<u>Source</u>
	<u>Heavy Duty Tool Box</u>	<u>Standard Tool Box</u>	
Wrench, open-end, double offset, long handle, 1" & 1-1/8"	1		Federal Stock
Wrench, open-end, double offset, long handle, 1" & 1-1/16"	1		Federal Stock
Wrench, open-end, double offset, long handle, 1-1/16" & 1-1/4"	1	1	Federal Stock
Wrench, open-end, double offset, long handle, 1-3/16" & 1-5/16"	1		Federal Stock
Wrench, open-end, double offset, long handle, 1-1/16" & 1-3/8"	1		Federal Stock
Wrench, open-end, double offset, long handle, 1-3/8" & 1-1/2"	1		Federal Stock
Wrench, open-end, double offset, long handle, 1-7/16" & 1-5/8"	1		Federal Stock
Wrench, open-end, adjustable, 4"	1	1	Federal Stock
Wrench, open-end, adjustable, 6"	1	1	Federal Stock
Wrench, open-end, adjustable, 8"	1	1	Federal Stock
Wrench, open-end, adjustable, 10"	1	1	Federal Stock
Wrench, open-end, adjustable, 12"	1	1	Federal Stock
Wrench, open-end, adjustable, 15"	1		Federal Stock
Pliers, battery terminal, 7"	1	1	Federal Stock
Pliers, combination, utility, 8"	1		Federal Stock
Pliers, diagonal cutting, short nose	1		Federal Stock
Pliers, diagonal cutting, 4"	1	1	Federal Stock

<u>Item</u>	<u>Quantity</u>		<u>Source</u>
	<u>Heavy Duty Tool Box</u>	<u>Standard Tool Box</u>	
Pliers, diagonal cutting, 6"	1	1	Federal Stock
Pliers, gas, 6"	1	1	Federal Stock
Pliers, ignition		1	Federal Stock
Pliers, gripping, 7-1/2"		1	Federal Stock
Pliers, long, round nose, 6"	1	1	Federal Stock
Pliers, needle nose, with side cutter		1	Federal Stock
Pliers, slip joint, angle nose, 5"	1	1	Federal Stock
Pliers, slip joint, angle nose, 8"	1	1	Federal Stock
Pliers, slip joint, angle nose, 10"	1		Federal Stock
Pliers, vice grip, 7"	1	1	Federal Stock
Pliers, vice grip, 10"	1		Federal Stock
Screwdrivers, flat tip, plastic handle, 1/8" x 3"	1	1	Federal Stock
Screwdriver, flat tip, plastic handle, 1/4" x 1-1/2"	1	1	Federal Stock
Screwdriver, flat tip, plastic handle, 3/16" x 2-1/2"	1	1	Federal Stock
Screwdriver, flat tip, plastic handle, 1/4" x 4"	1	1	Federal Stock
Screwdriver, flat tip, plastic handle, 5/16" x 6"	1	1	Federal Stock
Screwdriver, flat tip, plastic handle, 3/8" x 8"	1	1	Federal Stock
Screwdriver, flat tip, plastic handle, 7/16" x 8"	1	1	Federal Stock

<u>Item</u>	<u>Quantity</u>		<u>Source</u>
	<u>Heavy Duty Tool Box</u>	<u>Standard Tool Box</u>	
Screwdriver, Phillips-head, plastic handle, #1 - 3/16" x 1"	1	1	Federal Stock
Screwdriver, Phillips-head, plastic handle, #2 - 1/4" x 1-1/2"	1	1	Federal Stock
Screwdriver, Phillips-head, plastic handle, #1 - 3/16" x 3"	1	1	Federal Stock
Screwdriver, Phillips-head, plastic handle, #2 - 1/4" x 4"	1	1	Federal Stock
Screwdriver, Phillips-head, plastic handle, #3 - 5/16" x 6"	1	1	Federal Stock
Screwdriver, Phillips-head, plastic handle, #4 - 3/8" x 8"	1	1	Federal Stock
Screwdriver, offset, Phillips-head, #1 & 2	1	1	Federal Stock
Screwdriver, offset, Phillips-head, #2 & 3	1	1	Federal Stock
Screwdriver, offset, Phillips-head, #3 & 4	1	1	Federal Stock
Screwdriver, spark tester, flat blade, 5-1/8"	1	1	Federal Stock
Hammer, hand, ball peen, 4-oz	1	1	Federal Stock
Hammer, hand, ball peen, 12-oz	1	1	Federal Stock
Hammer, hand, ball peen, 32-oz	1		Federal Stock
Hammer, hand, plastic head	1	1	Federal Stock
Punch, drive pin, straight type, 1/16"		1	Federal Stock
Punch, drive pin, straight type, 3/32"		1	Federal Stock

<u>Item</u>	<u>Quantity</u>		<u>Source</u>
	<u>Heavy Duty Tool Box</u>	<u>Standard Tool Box</u>	
Punch, drive pin, straight type, 1/8"		1	Federal Stock
Punch, drive pin, straight type, 5/32"	1	1	Federal Stock
Punch, drive pin, straight type, 3/16"	1	1	Federal Stock
Punch, drive pin, straight type, 7/32"	1	1	Federal Stock
Punch, drive pin, straight type, 1/4"	1	1	Federal Stock
Punch, drive pin, straight type, 5/16"	1	1	Federal Stock
Punch, drive pin, straight type, 3/8"	1	1	Federal Stock
Punch, drive pin, tapered, 1/16"		1	Federal Stock
Punch, drive pin, tapered, 1/8"		1	Federal Stock
Punch, drive pin, tapered, 3/16"	1	1	Federal Stock
Punch, drive pin, tapered, 1/4"	1	1	Federal Stock
Punch, drive pin, tapered, 5/16"	1	1	Federal Stock
Punch, center, solid, 1/8" x 4"	1	1	Federal Stock
File, hand, flat, 6"	1	1	Federal Stock
File, hand, flat, 8"	1	1	Federal Stock
File, hand, flat, 10"	1	1	Federal Stock
File, hand, flat, 12"	1	1	Federal Stock
File, hand, round, 6"	1	1	Federal Stock

<u>Item</u>	<u>Quantity</u>		<u>Source</u>
	<u>Heavy Duty Tool Box</u>	<u>Standard Tool Box</u>	
File, hand, round, 8"	1	1	Federal Stock
File, hand, round, 10"	1	1	Federal Stock
File, hand, round, 12"	1	1	Federal Stock
Handles, file, wood, 1" x 4"	1	1	Federal Stock
Handles, file, wood, 1-1/4" x 4-1/2"	1	1	Federal Stock
Key, socket head screw, hex drive, .050"		1	Federal Stock
Key, socket head screw, hex drive, 1/16"		1	Federal Stock
Key, socket head screw hex drive, 5/64"		1	Federal Stock
Key, socket head screw, hex drive, 3/32"	1	1	Federal Stock
Key, socket head screw, hex drive, 1/8"	1	1	Federal Stock
Key, socket head screw, hex drive, 5/32"	1	1	Federal Stock
Key, socket head screw, hex drive, 3/16"	1	1	Federal Stock
Key, socket head screw, hex drive, 7/32"	1	1	Federal Stock
Key, socket head screw, hex drive, 1/4"	1	1	Federal Stock
Key, socket head screw, hex drive, 5/16"	1	1	Federal Stock
Key, socket head screw, hex drive, 3/8"	1	1	Federal Stock

<u>Item</u>	<u>Quantity</u>		<u>Source</u>
	<u>Heavy Duty Tool Box</u>	<u>Standard Tool Box</u>	
Key, socket head screw, hex drive, 1/2"	1	1	Federal Stock
Key, socket head screw, hex drive, 9/16"	1	1	Federal Stock
Key, socket head screw, hex drive, 5/8"	1	1	Federal Stock
Bar, pinch, 1/2" x 13-1/2"	1	1	Federal Stock
Bar, pinch, 3/4" x 24"	1		Federal Stock
Bar, pry, 17/32" x 16"	1	1	Federal Stock
Frame, hand hacksaw	1	1	Federal Stock
Blades, hand hacksaw, 18 teeth/in	12	12	Federal Stock
Blades, hand hacksaw, 24 teeth/in	12	12	Federal Stock
Blades, hand hacksaw, 32 teeth/in	12	12	Federal Stock
Scraper, carbon, flexible, 1" x 9"	1	1	Federal Stock
Knife, putty, 1-1/4" blade		1	Federal Stock
Knife, putty, 2" blade	1		Federal Stock
Pick-up tool, magnetic, large		1	Federal Stock
Pick-up tool, magnetic, pocket		1	Commercial
Wrench, open-end, fixed, (tappet) 7/16" x 1/2"		2	Federal Stock
Wrench, open-end, fixed, (tappet) 1/2" x 9/16"		2	Federal Stock
Wrench, open-end, fixed, (tappet) 5/8" x 11/16"		2	Federal Stock
Tape, measuring, 8'	1	1	Federal Stock

<u>Item</u>	<u>Quantity</u>		<u>Source</u>
	<u>Heavy Duty Tool Box</u>	<u>Standard Tool Box</u>	
Rule, steel, machinist, 6" long, 1/32" one side, 1/10" other side		1	Federal Stock
Gage, thickness, English system, 25-blade	1	1	Federal Stock
Gage, thickness, English system, 13-blade		1	Federal Stock
Gage, gap-setting, set of 8, angular wire	1	1	Federal Stock
Tool kit, automotive, electrical, ignition		1	Federal Stock
Tool kit, diesel injector repair	1		Federal Stock
Chisel, cold, hand, 1/4"		1	Federal Stock
Chisel, cold, hand, 5/16"		1	Federal Stock
Chisel, cold, hand, 3/8"		1	Federal Stock
Chisel, cold, hand, 7/16"	1	1	Federal Stock
Chisel, cold, hand, 1/2"	1	1	Federal Stock
Chisel, cold, hand, 5/8"	1	1	Federal Stock
Chisel, cold, hand, 3/4"	1	1	Federal Stock
Chisel, cold, hand, 7/8"	1		Federal Stock

Ventilation Equipment

Five 11-ft lengths, 2-1/2-inch flexible exhaust hose, 4 couplings and 1 adapter	4 sets		Commercial
500 cfm, 10-inch, 110 V exhaust fan with automatic shutter	2		Commercial

Appendix A

STANDARD SPECIFICATIONS

The standard specifications given in the following list or mentioned in the text shall govern in all cases where references to standard specifications are made. In case of difference between these standard specifications and this specification or its accompanying drawings, this specification or its accompanying drawings shall govern. Especial care shall be exercised to refer in requests for quotations, in orders, and in subcontracts to the standard specifications and to all modifications thereof.

Military

MIL-A-397B	Feb. 3, 1953	Adhesive, Room-Temperature and Intermediate-Temperature Setting Resin (Phenol, Resorcinol, and Melamine Base)
MIL-C-43006	Jan. 27, 1961	Cloth, Laminated, Vinyl-Nylon, High-Strength Flexible
MIL-T-704C	June 22, 1956	Treatment and Painting of Material
MIL-W-530B	Mar. 24, 1959	Webbing, Textile, Cotton, General Purpose, Natural or in Colors

Joint Army-Navy

JAN-C-496(1)	Mar. 11, 1952	Clips, End
JAN-E-480	July 24, 1957	Enamel, Baking Phenol- or Urea-Formaldehyde

NAVDOCKS

97h	Sept. 1956	Electrical Apparatus, Distributing Systems, and Wiring
-----	------------	--

Federal

T-R-605	Oct. 31, 1956	Rope, Manila and Sisal
---------	---------------	------------------------

W-C-596	Aug. 19, 1959	Connector, Plug, Electrical; Connector, Receptacle, Elec- trical; Plate, Wall, Electrical
W-F-406a	June 9, 1960	Fittings for Electrical Cable and Flexible Metal Conduit
W-J-800a	Apr. 2, 1958	Junction Box; Extension, Junction Box; Cover, Junction Box, (Steel; Cadmium or Zinc-Coated)
W-P-131a(2)	Apr. 13, 1951	Panelboards; Equipped With Automatic Circuit-Breakers
W-S-610	Apr. 2, 1958	Splice, Conductor
FF-B-571a	Jan. 9, 1934	Bolts, Nuts, Studs, and Top Rivets (and Material for Same)
FF-H-116c	July 3, 1957	Hinges, Hardware, Builder's
FF-N-105	Oct. 6, 1952	Nails, Ware; and Staples
FF-P-386b	Mar. 21, 1951	Pins, Cotter (Split)
FF-S-111b	May 15, 1961	Screws, Wood
NN-P-530c	Nov. 2, 1961	Plywood, Flat Panel
QQ-P-416a	Dec. 11, 1956	Plating, Cadmium (Electro- Deposited)
QQ-S-633a	Nov. 6, 1957	Steel Bars, Carbon, Cold Finished and Hot Rolled (General Purpose)
QQ-S-640	Aug. 8, 1952	Steel; Carbon, Sheet and Strip
QQ-Z-325a	May 13, 1959	Zinc Coating: Electro-Deposited, Requirements for
TT-E-529a	Oct. 30, 1959	Enamel, Alkyd, Semi-Gloss
TT-P-636b	Feb. 23, 1954	Primer Coating, Synthetic, Wood and Ferrucis Metal

WW-C-566a	Sep. 2, 1954	Conduit, Steel, Flexible
WW-C-581c(2)	Oct. 28, 1958	Conduit, Electrical, Steel, Rigid, Zinc-Coated
WW-N-351a	Mar. 13, 1956	Nipples, Pipe, Threaded

Federal Standards

FED-STD-595	Mar. 1, 1956	Colors
FED-STD-751	Aug. 14, 1959	Stitches, Seams and Stitchings

Non-Government

All of the following specifications shall be of latest date unless indicated otherwise:

American Society for Testing Materials

Douglas Fir Plywood Association

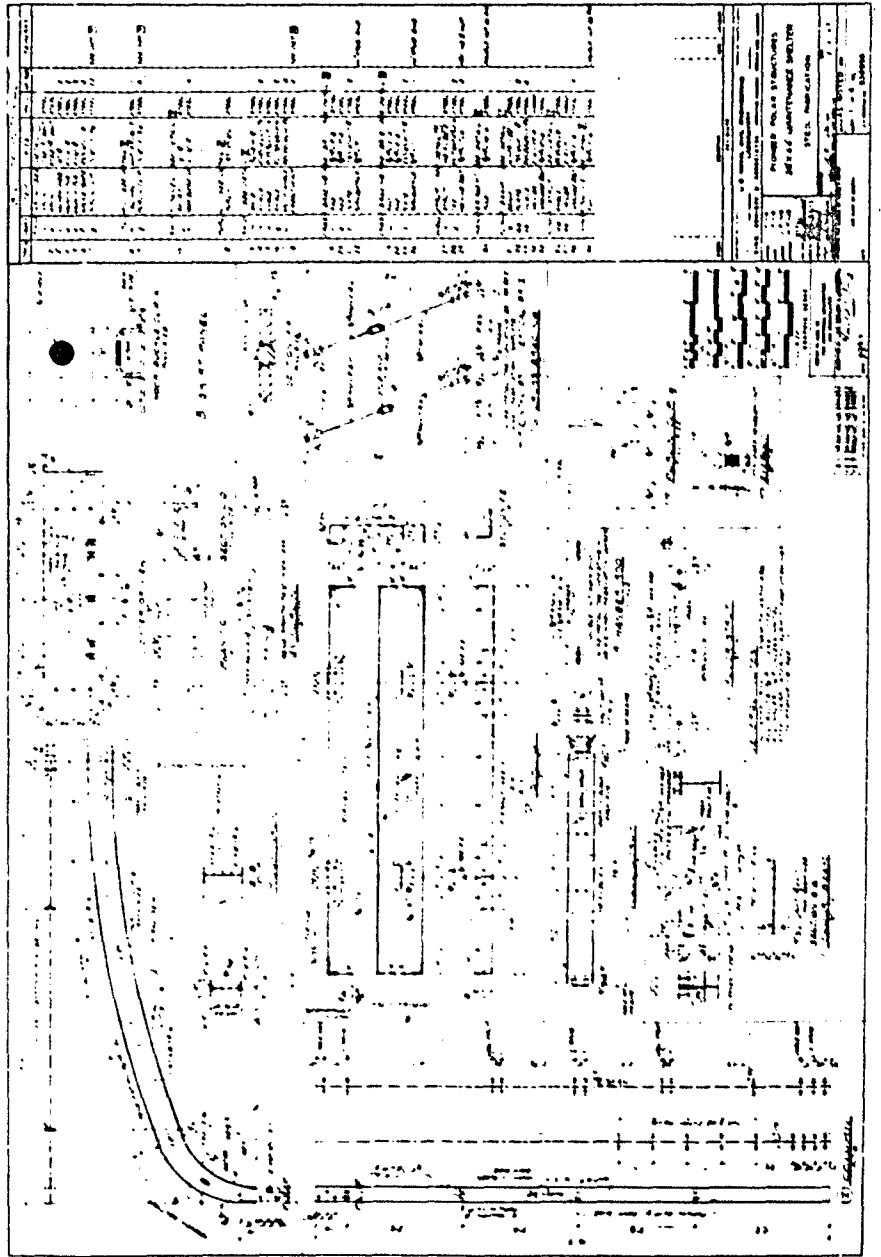
Commercial Standard CS-45

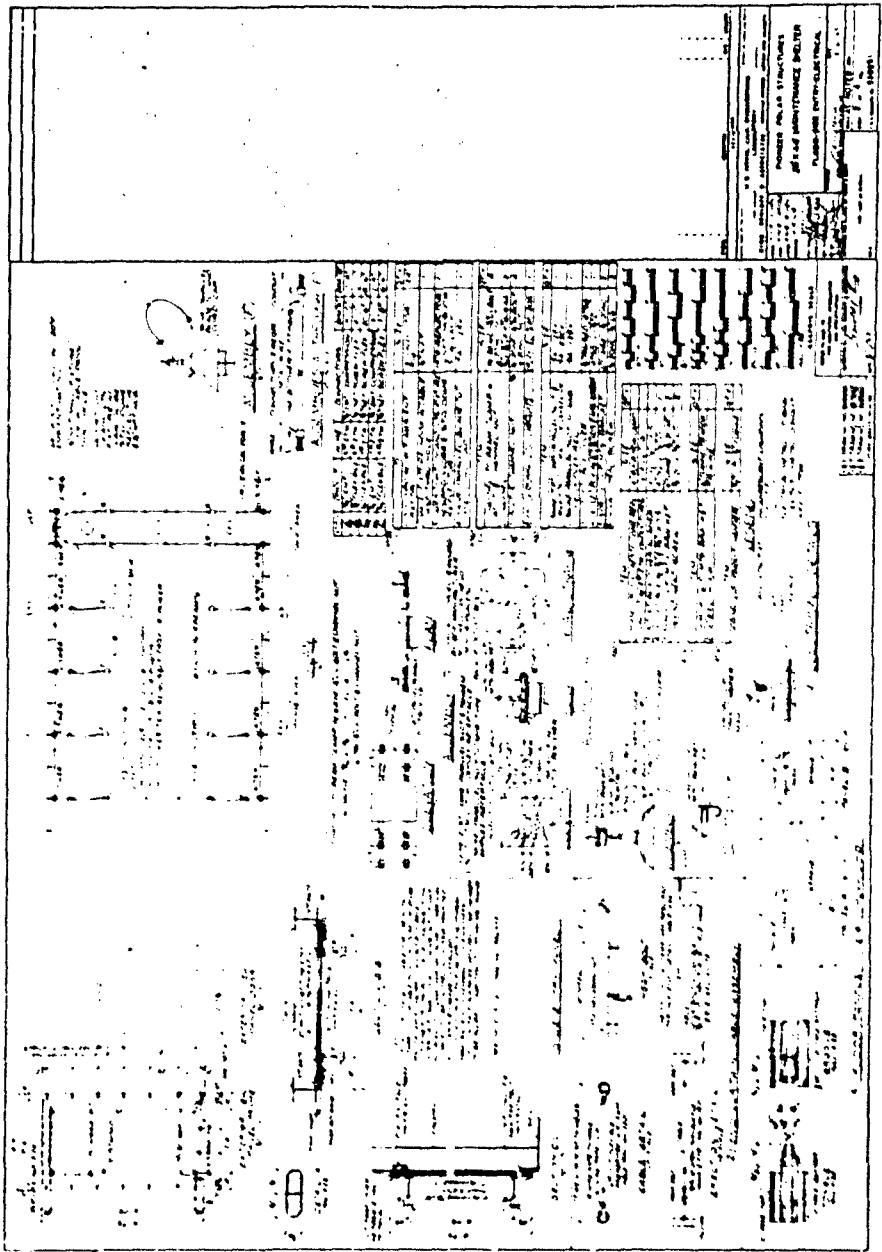
Appendix B

DRAWINGS FOR THE HEAVY-DUTY MAINTENANCE SHELTER

The original of the drawings listed below and shown at reduced scale are available at the Naval Civil Engineering Laboratory, Port Hueneme, California. All drawings are 28 by 40 inches.

<u>Y & D Drawing No.</u>	<u>Title</u>
936950	28- by 44-Foot Maintenance Shelter Steel Fabrication
936951	28- by 44-Foot Maintenance Shelter Floor, Side-Entry, Electrical
936952	28- by 44-Foot Maintenance Shelter Cover Details
936953	28- by 44-Foot Maintenance Shelter Erection





PROJECT NO. 11-10-100
DATE: 11-10-100
DRAWN BY: [Name]
CHECKED BY: [Name]

GENERAL INFORMATION		OPERATIONAL DATA		MAINTENANCE RECORD	
NO.	DATE	TIME	STATUS	REMARKS	BY
1	10/15/50	0800	Normal	Engine oil changed.	J. Smith
2	10/20/50	0900	Minor	Check valve replaced.	M. Jones
3	11/05/50	0700	Major	Overhaul of engine.	A. Brown
4	11/15/50	0830	Normal	Regular inspection.	J. Smith
5	12/01/50	0915	Minor	Filter cleaned.	M. Jones
6	12/10/50	0800	Normal	Oil level checked.	A. Brown
7	12/20/50	0900	Minor	Spark plug replaced.	J. Smith
8	01/05/51	0730	Major	Engine overhaul completed.	A. Brown
9	01/15/51	0800	Normal	Post-overhaul check.	J. Smith
10	01/25/51	0900	Minor	Minor adjustments.	M. Jones

REMARKS:
 1. Engine oil changed at 8000 hours.
 2. Check valve replaced at 9000 hours.
 3. Major overhaul of engine at 11000 hours.
 4. Regular inspection at 12000 hours.
 5. Filter cleaned at 13000 hours.
 6. Oil level checked at 14000 hours.
 7. Spark plug replaced at 15000 hours.
 8. Engine overhaul completed at 16000 hours.
 9. Post-overhaul check at 17000 hours.
 10. Minor adjustments at 18000 hours.

OPERATIONAL DATA:
 1. Hours of operation: 18000
 2. Fuel consumption: 1200 gallons
 3. Oil consumption: 150 gallons
 4. Average speed: 15 knots
 5. Maximum speed: 20 knots





GENERAL INFORMATION		PROPERTY INFORMATION	
1. NAME OF PROPERTY	2. ADDRESS	3. CITY	4. STATE
5. ZIP CODE	6. COUNTY	7. PARCEL NUMBER	8. SECTION
9. TOWNSHIP	10. RANGE	11. MERIDIAN	12. DISTRICT
13. DATE OF ACQUISITION	14. TYPE OF ACQUISITION	15. VALUE	16. TAX STATUS
17. OWNER'S NAME	18. OWNER'S ADDRESS	19. OWNER'S CITY	20. OWNER'S STATE
21. OWNER'S ZIP CODE	22. OWNER'S COUNTY	23. OWNER'S PARCEL NUMBER	24. OWNER'S SECTION
25. OWNER'S TOWNSHIP	26. OWNER'S RANGE	27. OWNER'S MERIDIAN	28. OWNER'S DISTRICT
29. DATE OF SALE	30. TYPE OF SALE	31. SALE PRICE	32. SALE TAX
33. SALE TAX RATE	34. SALE TAX AMOUNT	35. SALE TAX YEAR	36. SALE TAX STATUS
37. SALE TAX ID NUMBER	38. SALE TAX ID ADDRESS	39. SALE TAX ID CITY	40. SALE TAX ID STATE
41. SALE TAX ID ZIP CODE	42. SALE TAX ID COUNTY	43. SALE TAX ID PARCEL NUMBER	44. SALE TAX ID SECTION
45. SALE TAX ID TOWNSHIP	46. SALE TAX ID RANGE	47. SALE TAX ID MERIDIAN	48. SALE TAX ID DISTRICT
49. SALE TAX ID DATE OF ACQUISITION	50. SALE TAX ID TYPE OF ACQUISITION	51. SALE TAX ID VALUE	52. SALE TAX ID TAX STATUS
53. SALE TAX ID OWNER'S NAME	54. SALE TAX ID OWNER'S ADDRESS	55. SALE TAX ID OWNER'S CITY	56. SALE TAX ID OWNER'S STATE
57. SALE TAX ID OWNER'S ZIP CODE	58. SALE TAX ID OWNER'S COUNTY	59. SALE TAX ID OWNER'S PARCEL NUMBER	60. SALE TAX ID OWNER'S SECTION
61. SALE TAX ID OWNER'S TOWNSHIP	62. SALE TAX ID OWNER'S RANGE	63. SALE TAX ID OWNER'S MERIDIAN	64. SALE TAX ID OWNER'S DISTRICT
65. SALE TAX ID DATE OF SALE	66. SALE TAX ID TYPE OF SALE	67. SALE TAX ID SALE PRICE	68. SALE TAX ID SALE TAX
69. SALE TAX ID SALE TAX RATE	70. SALE TAX ID SALE TAX AMOUNT	71. SALE TAX ID SALE TAX YEAR	72. SALE TAX ID SALE TAX STATUS
73. SALE TAX ID SALE TAX ID NUMBER	74. SALE TAX ID SALE TAX ID ADDRESS	75. SALE TAX ID SALE TAX ID CITY	76. SALE TAX ID SALE TAX ID STATE
77. SALE TAX ID SALE TAX ID ZIP CODE	78. SALE TAX ID SALE TAX ID COUNTY	79. SALE TAX ID SALE TAX ID PARCEL NUMBER	80. SALE TAX ID SALE TAX ID SECTION
81. SALE TAX ID SALE TAX ID TOWNSHIP	82. SALE TAX ID SALE TAX ID RANGE	83. SALE TAX ID SALE TAX ID MERIDIAN	84. SALE TAX ID SALE TAX ID DISTRICT
85. SALE TAX ID SALE TAX ID DATE OF ACQUISITION	86. SALE TAX ID SALE TAX ID TYPE OF ACQUISITION	87. SALE TAX ID SALE TAX ID VALUE	88. SALE TAX ID SALE TAX ID TAX STATUS
89. SALE TAX ID SALE TAX ID OWNER'S NAME	90. SALE TAX ID SALE TAX ID OWNER'S ADDRESS	91. SALE TAX ID SALE TAX ID OWNER'S CITY	92. SALE TAX ID SALE TAX ID OWNER'S STATE
93. SALE TAX ID SALE TAX ID OWNER'S ZIP CODE	94. SALE TAX ID SALE TAX ID OWNER'S COUNTY	95. SALE TAX ID SALE TAX ID OWNER'S PARCEL NUMBER	96. SALE TAX ID SALE TAX ID OWNER'S SECTION
97. SALE TAX ID SALE TAX ID OWNER'S TOWNSHIP	98. SALE TAX ID SALE TAX ID OWNER'S RANGE	99. SALE TAX ID SALE TAX ID OWNER'S MERIDIAN	100. SALE TAX ID SALE TAX ID OWNER'S DISTRICT

