

UNITED STATES ARMY

# FRANKFORD ARSENAL

DIGITAL COMPUTER SIMULATION OF THE PERFORMANCE OF  
SMALL SOLID PROPELLANT ROCKET MOTORS

by

JAMES M. DE LEO

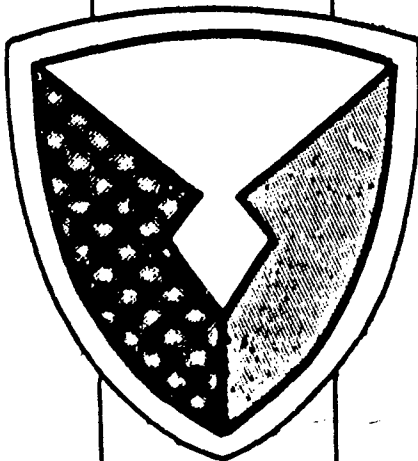
OMS Code 5010.11.844.00  
DA Project 5B97-01-006

Reproduced From  
Best Available Copy

September 1963

PHILADELPHIA 37, PA.

REPORT R-1694

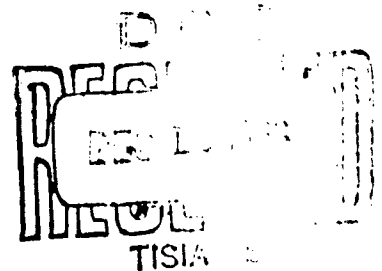


CATALOGED BY DDC

425164

IS AD 10.

19990721020



Qualified requesters may obtain copies of this report from the Defense Documentation Center (DDC), (formerly ASTIA). Cameron Station, 5010 Duke Street, Alexandria, Virginia.

The findings in this report are not to be construed as an official Department of the Army position.

NOTICE: When government or other drawings, specifications or other data are used for any purpose other than in connection with a definitely related government procurement operation, the U. S. Government thereby incurs no responsibility, nor any obligation whatsoever; and the fact that the Government may have formulated, furnished, or in any way supplied the said drawings, specifications, or other data is not to be regarded by implication or otherwise as in any manner licensing the holder or any other person or corporation, or conveying any rights or permission to manufacture, use or sell any patented invention that may in any way be related thereto.

REPORT R-1694

DIGITAL COMPUTER SIMULATION OF THE PERFORMANCE OF  
SMALL SOLID PROPELLANT ROCKET MOTORS

OMS Code 5010.11.844.00

DA Project 5B97-01-006

Prepared by:

*James M. De Leo*  
JAMES M. DE LEO  
Physicist

Reviewed by:

*R. F. Levino*  
R. F. LEVINO  
Acting Chief  
Propellant Actuated Devices Division

*W. J. Kroeger*  
W. J. KROEGER  
Director  
Pitman-Dunn Institute for Research

Approved by:

*C. C. Fawcett*  
C. C. FAWCETT  
Technical Director  
Research and Development Group

*R. E. Bassler, Jr.*  
R. E. BASSLER, Jr.  
Lt Colonel, Ordnance Corps  
Chief  
Research and Development Group

For

GEORGE H. PIERRE, Jr.  
Colonel, Ordnance Corps  
Commanding

FRANKFORD ARSENAL  
Research and Development Group  
Philadelphia, Pa.

September 1963

## ABSTRACT

A mathematical model of a small solid propellant rocket has been programmed for use with a Univac Solid State 90 Digital Computer by means of Fortran I and Fortran II. In addition to calculating the pressure-time and thrust-time transients, the program computes time-averaged pressure, thrust coefficient, thrust, flow rate, and burning rate, as well as total impulse and specific impulse.

The report includes the derivation of equations, the method of solution, the program in Fortran I and Fortran II, an example solution compared with experiment, and a recommended procedure for use of the computer program in the design and development of a small solid propellant rocket motor.

# TABLE OF CONTENTS

	<u>Page</u>
LIST OF SYMBOLS.....	v
INTRODUCTION .....	1
ASSUMPTIONS.....	1
EQUATIONS .....	2
METHOD OF SOLUTION .....	3
COMPUTER PROGRAM .....	4
CONCLUSIONS.....	4
RECOMMENDED PROCEDURE.....	4
FUTURE WORK.....	5
APPENDIX A - Derivation of Equation 1.....	6
APPENDIX B - Iterative Procedure for Solving Equation 1.....	9
APPENDIX C - Use of the Newton-Rapthson Method in Solving $C_f$ ....	14
APPENDIX D - The Quantity $\phi \delta$ .....	19
APPENDIX E - The Fortran Programs.....	21
APPENDIX F - Example - Comparison of Computer and Experimental Results .....	23
REFERENCES .....	26
DISTRIBUTION .....	27

## List of Tables

Table C-I. Values Obtained in a Newton-Rapthson Iterative Procedure for Solving $x1.6666667 - x1.8333333 -$ $0.0021905869$ .....	18
Table F-I. Parameters Describing the XM15 Rocket Motor.....	23
Table F-II. Additional Computed Parameters.....	23

# List of Illustrations

<u>Figure</u>		<u>Page</u>
B-1.	Schematic Flow Chart.....	11
B-2.	Illustration of dz and EPS choices.....	12
B-3.	Pressure vs Time for dz = 0.001, EPS = 2.5 psi dz = 0.01, EPS = 25 psi.....	13
C-1.	Plot of $y = x^{1.6667}$ and $y = x^{1.8333}$ .....	16
C-2.	Plot of $y = x^{1.6667} - x^{1.8333}$ and $y = 0.002191$ and $y = x^{1.6667} - x^{1.8333} - 0.002191$ .....	17
D-1.	Combined Energy Loss Correction, $\phi$ , and Divergence Angle Correction, $\delta$ , vs Divergence Angle, $\alpha$ .....	20
F-1.	Comparison between Computer Pressure vs Time Curve and Experimental Pressure vs Time Curve obtained from XM15 Test Firing.....	24
F-2.	Computer Thrust vs Time Curve, simulating XM15 Test Firing.....	25

# LIST OF SYMBOLS

<u>Fortran Repre- sentation</u>	<u>Symbol</u>	<u>Definition</u>	<u>Unit</u>
AID	(None)	Factor used in estimating pressure after propellant is consumed	(None)
AT	$A_t$	Nozzle throat area	in. <sup>2</sup>
B	B	Regression rate coefficient	(in./sec)(in. <sup>2</sup> /lb) <sup>n</sup>
BN	n	Regression rate exponent	(None)
CB	$c_b$	Total propellant burned at time, t	lb
CD	$C_d$	Discharge coefficient	sec <sup>-1</sup>
CEX	$c_{ex}$	Total gas expelled at time, t	lb
CF	$C_f$	Thrust coefficient	(None)
CFAV	$\bar{C}_f$	Time-averaged thrust coefficient	(None)
CFM	$C_f^c$	Constant part of $C_f$	(None)
CFN	$C_f^v$	Numerator of variable part of $C_f$	(None)
CP	$c_p$	Total charge weight	lb
DELT	$\phi \delta$	Correction factor in thrust equation	(None)
DEN	$\rho$	Gravimetric density of propellant	lb/in. <sup>3</sup>
DR	dr	Incremental distance corresponding to dz	in.
DT	dt	Time increment	sec
DW	dw	Web increment	in.
DZ	dz	Fraction of web burned at time, t	(None)
E	$\epsilon$	Nozzle expansion ratio	(None)
EPS	$\Delta P$	Pressure increment used to modify pressure estimates and to compare these estimates with the calculated pressure	lb/in. <sup>2</sup>



<u>Fortran Repre- sentation</u>	<u>Symbol</u>	<u>Definition</u>	<u>Unit</u>
FAVG	$\bar{F}$	Time-averaged thrust	lb
FO	F	Thrust	lb
FORM	$\theta$	Form factor	(None)
FP	$F_p$	Impetus	ft-lb/lb
FR	f	Fraction of web remaining	(None)
G	$\gamma$	Ratio of specific heats	(None)
GUESS	(None)	Increment for determining initial estimated pressure for each Z value	lb/in. <sup>2</sup>
P	$P_0$	Initial pressure	lb/in. <sup>2</sup>
P	P	Pressure	lb/in. <sup>2</sup>
PA	$P_a$	Atmospheric pressure	lb/in. <sup>2</sup>
PAV	$P_{av}$	Average of P(z) and P(z + dz)	lb/in. <sup>2</sup>
PAVG	$\bar{P}$	Time-average pressure	lb/in. <sup>2</sup>
PB	P(z)	Pressure corresponding to z	lb/in. <sup>2</sup>
PEX	$P_{ex}$	Time-averaged nozzle exit pressure	lb/in. <sup>2</sup>
PG	$P_g$	Estimated pressure	lb/in. <sup>2</sup>
PXT	(None)	Estimated area under P-t curve from time = 0 to time = t	lb sec/in. <sup>2</sup>
PXTK	$\int_0^t P dt$	Actual area under P-t curve from time = 0 to time = t	lb sec/in. <sup>2</sup>
RATE	r	Web regression rate	in./sec
RAVG	$\bar{r}$	Time-averaged burning rate	in./sec
SPI	$I_{sp}$	Specific impulse	sec
T	t	Time	sec

<u>Fortran Repre- sentation</u>	<u>Symbol</u>	<u>Definition</u>	<u>Unit</u>
TI	dt	Time increment after propellant is consumed	sec
TIMP	I <sub>tot</sub>	Total impulse	lb-sec
TK	T <sub>k</sub>	Ratio of isobaric flame temperature (°K) to isochoric flame temperature (°K)	(None)
V	V	Volume at time, t	in. <sup>3</sup>
VOL	V <sub>0</sub>	Initial free volume	in. <sup>3</sup>
WDOT	$\dot{c}_{ex}$	Gas flow rate	lb/sec
WEB	w	Web	in.
X	p <sub>e</sub> /P	Ratio of nozzle exit pressure to chamber pressure	(None)
XO	x <sub>0</sub>	Initial guess in Newton-Raphson iteration	(None)
Z	z	Fraction of web burned at time, t	(None)

## INTRODUCTION

Basic rocket equations and empirically derived propellant constants and motor dimensions may be used to predict the performance of small solid propellant rocket motors. Programming these equations on a digital computer reduces the solution time for such performance estimates to a matter of minutes. This report is concerned with the preparation of a suitable digital computer program for this purpose.

Specifically, this analysis is intended to predict the pressure and thrust vs time transients in rocket motors that are large enough to assume equilibrium between the gas generation rate and the gas discharge rate, and small enough so that temperature gradients in the propellant grains may be considered negligible.

The objective of this report is to present a digital computer program which will serve as a satisfactory tool in the design and development of certain small solid propellant rocket motors.

## ASSUMPTIONS

The following assumptions have been made in the construction of the mathematical model of the solid propellant rocket motor.

1. Initially (time = 0), the igniter system has pressurized the chamber to a pressure,  $P_0$ .
2. All propellant surfaces are ignited isochronically, and burning is directed normal to all exposed propellant surfaces.
3. Propellant geometry can be described by a form function,<sup>1\*</sup> and propellant is completely burned upon disappearance of the web.
4. The space-averaged temperature of the combustion products remains constant at the isobaric (i.e., constant volume, adiabatic) flame temperature,  $T$ .
5. The gas generation rate and the gas discharge rate are equal.
6. Temperature gradients in the propellant grain are negligible.

---

\*See REFERENCES.

## EQUATIONS

The equations predicting the pressure\* vs time relationship are combined in Appendix A into the following:

$$P = P_o + \frac{12.0 \left\{ \left[ -\theta z^2 + z(1 + \theta) \right] c_p - \frac{C_d A_t w}{B} \int_0^{\frac{w}{B}} \int_0^z \frac{dz}{P_{av}^n} \right\} \rho' P T_k}{\rho V_o + \left[ -\theta z^2 + z(1 + \theta) \right] c_p} \quad (1)$$

The thrust value corresponding to a given pressure value is defined by:

$$F = \phi \delta C_f A_t P \quad (\text{Ref 2}) \quad (2)$$

in which

$$C_f = \left\{ \frac{2\gamma^2}{\gamma - 1} \left( \frac{2}{\gamma + 1} \right)^{\frac{\gamma+1}{\gamma-1}} \left[ 1 - \left( \frac{P_e}{P} \right)^{\frac{\gamma-1}{\gamma}} \right] \right\}^{1/2} + \left( \frac{P_e}{P} - \frac{P_a}{P} \right) \cdot \epsilon \quad (3)$$

(Ref 3)

and

$$\epsilon = \frac{\left( \frac{\gamma - 1}{2} \right)^{1/2} \left( \frac{2}{\gamma + 1} \right)^{\frac{\gamma+1}{2(\gamma-1)}}}{\left( \frac{P_e}{P} \right)^{1/\gamma} \left[ 1 - \left( \frac{P_e}{P} \right)^{\frac{\gamma-1}{\gamma}} \right]^{1/2}} \quad (\text{Ref 3}) \quad (4)$$

Equations 1 to 4 are used to predict the pressure and thrust vs time curves. In addition to predicting these relationships, it is desirable to compute additional parameters that characterize a specific solid propellant rocket motor. Additional parameters computed in this program are:

### A. Time-Averaged Pressure

$$\bar{P} = \frac{\int_0^{t_c} P dt}{t_c} \quad (5)$$

\*Unless otherwise stated, the word "pressure" will refer to head pressure.

B. Time-Averaged Thrust Coefficient

$$\bar{C}_f = C_f^c - \frac{C_f^v}{P} \quad (6)$$

C. Time-Averaged Thrust

$$\bar{F} = \phi \delta \bar{C}_f \bar{P} A_t \quad (7)$$

D. Time-Averaged Gas Flow Rate Through the Nozzle

$$\dot{c}_{ex} = C_d A_t \bar{P} \quad (8)$$

E. Specific Impulse

$$I_{sp} = \bar{F} / \dot{c}_{ex} \quad (9)$$

F. Total Impulse

$$I_{tot} = \bar{F} t_c \quad (10)$$

G. Time-Averaged Burning Rate

$$\bar{r} = B \bar{P}^n \quad (11)$$

These additional parameters are computed after the computation of the pressure and thrust vs time relationships.

### METHOD OF SOLUTION

Equation 1 is an implicit expression of pressure,  $P$ , as a function of the fraction of web burned,  $z$ . All other values in this equation are considered constants. Since  $z$  ranges from 0 to 1, it is conveniently used as the independent variable. For a given value of  $z$  and an assumed value of  $P$ , the right hand side of Equation 1 may be calculated. If the result of this calculation is in close agreement with the assumed value of  $P$ , then the assumed value is adequate. If there is poor agreement, then another estimate for  $P$  is made and the calculation is repeated. This process continues until good agreement between the assumed value and the calculated value is obtained. If systematic estimates are made, the number of iterations are reduced. The specific details of this iteration as used in the computer program are found in Appendix B.

For each value of  $P$  computed in this fashion, a corresponding value of  $F$  is calculated by means of Equation 2. Before Equation 2 is solved, the parametric Equations 3 and 4 must be solved for  $C_f$ . Details of the  $C_f$  calculation by use of the Newton-Raphson Method are found in Appendix C.

An explanation of the  $\phi \delta$  quantity is in Appendix D.

### COMPUTER PROGRAM

The method of solution described above and in Appendices B and C is the basis for the computer program which was written in Fortran I and Fortran II for use with a Univac Solid State 90 Computer. These programs appear in Appendix E of this report.

To test this computer model, parameters describing the XM15 Catapult, an experimental solid propellant rocket motor designed to eject the nose capsule of a fighter aircraft, were used as input data with the program. These parameters, together with the computer results compared to experimental results, are shown in Appendix F.

### CONCLUSIONS

1. The method presented is useful in predicting the performance of small solid propellant rocket motors as used in Propellant Actuated Devices (PAD).

2. Fortran has proved effective in accomplishing a digital computer simulation of small solid propellant rocket motors.

### RECOMMENDED PROCEDURE

It is recommended that the computer program presented here be incorporated in the performance estimation and early design and development phases of small propellant rocket motors as used in PAD. The procedure is as follows:

1. Select initial design parameters consistent with envelope requirements.

2. Perform exploratory computer run to evaluate initial design parameters. —

3. Adjust parameters and make computer tests until agreement between the computer output and the design requirements is obtained.

4. Build and test an experimental model based on the parameters selected in 3 above.

5. Adjust propellant parameters to match the experimental performance. This is the calibrated analytical model.

6. Use calibrated analytical model to establish optimum design parameters.

#### FUTURE WORK

Future work will be directed toward the preparation of programs for the automated design of more complex PAD systems.

## APPENDIX A

### DERIVATION OF EQUATION 1

Each time the propellant web regresses by an increment  $dz = \frac{dw}{w}$ , the weight of charge burnt ( $c_b$ ), in pounds, is given by

$$c_b = z(1 + \theta f) c_p \quad (A-1)$$

where  $z$  is the total fraction of web burnt (dimensionless);

$f$  is the total fraction of web remaining, i.e.,  $1 - z$  (dimensionless);

$\theta$  is the form factor (dimensionless)

$c_p$  is the total charge weight at the start (lb).

The free volume ( $V$ ), in cu in., is the sum of the initial free volume ( $V_0$ ), in cu in., and the volume left by the burned propellant.

$$V = V_0 + \frac{c_b}{\rho} \quad (A-2)$$

where  $\rho$  is the gravimetric density of the propellant (lb/in.<sup>3</sup>).

The rate of web regression ( $r$ ) in inches per second is given by

$$r = B P_{av}^n \quad (A-3)$$

where  $B$  is the regression rate coefficient (in./sec)(in.<sup>2</sup>/lb)<sup>n</sup>;

$n$  is the regression rate exponent (dimensionless);

$P_{av}$  is the pressure (lb/in.<sup>2</sup>) averaged between the pressures corresponding to  $z$  and  $z + dz$ , i.e.,  $P_{av} = \frac{P(z) + P(z+dz)}{2}$

The time ( $dt$ ), in seconds, required for the web to burn a fraction  $dz$  is given by

$$dt = \frac{w \, dz}{r} \quad (A-4)$$



where  $w$  is the total web (in.).

The weight of gas ( $c_{ex}$ ), in pounds, that has been expelled up to time  $t$  is given by

$$c_{ex} = C_d A_t \int_0^t P dt \quad (A-5)$$

where  $C_d$  is the discharge coefficient ( $\text{sec}^{-1}$ );

$A_t$  is the throat area of the nozzle ( $\text{in.}^2$ );

$P$  is the pressure at time  $t$  ( $\text{lb/in.}^2$ ).

The pressure at time  $t$  is given by

$$P = P_o + 12.0 (c_b - c_{ex}) F_p T_k / V \quad (A-6)$$

where  $(c_b - c_{ex})$  is the weight of gas in the chamber (lb);

$F_p$  is the impetus of the propellant ( $\text{ft-lb/lb}$ );

$T_k$  is the ratio of the isobaric flame temperature ( $^{\circ}\text{K}$ ) of the propellant to the isochoric flame temperature ( $^{\circ}\text{K}$ ) of the propellant.

Combining Equations A-1 through A-6,

$$P = P_o + \frac{12.0 \left[ z(1 + \theta f) c_p - C_d A_t \int_0^t P dt \right] F_p T_k}{\frac{V_o + z(1 + \theta f) c_p}{\rho}} \quad (A-7)$$

Since  $f = 1 - z$ ,

$$P = P_o + \frac{12.0 \left\{ \left[ -\theta z^2 + z(1 + \theta) \right] c_p - C_d A_t \int_0^t P dt \right\} F_p T_k}{\frac{V_o + \left[ -\theta z^2 + z(1 + \theta) \right] c_p}{\rho}} \quad (A-8)$$

Combining Equations A-3 and A-4,

$$dt = \frac{w dz}{B P^n_{av}} \quad (A-9)$$

Integrating,

$$\int_0^t dt = \int_{z(0)}^{z(t)} \frac{w dz}{B P_{av}^n} \quad (A-10)$$

Since  $z(0) = 0$  and  $z(t) = z$ , and since  $w$  and  $B$  are constants,

$$t = \frac{w}{B} \int_0^z \frac{dz}{P_{av}^n} \quad (A-11)$$

Substituting Equations A-9 and A-11 into the integral expression in the numerator of Equation A-8, and multiplying the numerator and denominator by  $\rho$ ,

$$P = P_0 + \frac{12.0 \left\{ \left[ -\theta z^2 + z(1 + \theta) \right] c_p - \frac{C_d A_t w}{B} \int_0^z \frac{w}{B} \frac{dz}{P_{av}^n} \frac{P}{P_{av}^n} dz \right\} \rho F_p T_k}{\rho V_0 + \left[ -\theta z^2 + z(1 + \theta) \right] c_p} \quad (A-12)$$

Equation A-12 is Equation 1 in the text.

## APPENDIX B

### ITERATIVE PROCEDURE FOR SOLVING EQUATION 1

The procedure for calculating  $P$  in Equation 1 is as follows:

1. At  $t = 0$ ,  $P = P_0$  and  $z = 0$ .
2.  $z = z + dz$ .
3. Compute  $c_b$  using Equation A-1.
4. Compute  $V$  using Equation A-2.
5. Estimate a value of  $P$ , making sure the estimated value is less than the actual value.
6. Compute  $r$  using Equation A-3.
7. Compute  $dt$  using Equation A-4.
8. Compute  $c_{ex}$  using Equation A-5.
9. Compute  $P$  using Equation A-6.
10. If the difference between the value of  $P$  estimated in step 5 and the value of  $P$  calculated in step 9 is large, increment the estimated value of  $P$  by some  $\Delta P > 0$  and go back to step 6. If this difference is small, the value of  $P$  computed in 9 is adequate as the pressure,  $P(z + dz)$ , at the time  $t + dt$ , where  $t$  is the time corresponding to the pressure  $P(z)$  and  $dt$  is the value last computed in step 7. Proceed to step 11.
11. If  $z < 1$ , go back to step 2; otherwise, set  $z = 1$  and proceed.
12. Since  $z = 1$ , the propellant is completely consumed and gas is no longer being generated. Hence, the gas in the chamber will be expelled and the pressure will rapidly decrease. The independent variable is now time,  $t$ . So,  $t = t + dt$ , where  $dt$  is designated.
13. Set  $c_b = c_p$ .
14. Compute  $V$  using Equation A-2.
15. Estimate a value for  $P$ , making sure the estimated value is less than the actual value.

16. Compute  $c_{ex}$  using Equation A-5.
17. Compute  $P$  using Equation A-6.
18. Compare the pressures, as was done in step 10; increment the estimated pressure and go back to step 16. When good agreement is obtained, proceed to step 19.
19. Increment  $t$  by  $dt$ , and go back to step 15. Continue in this manner until the pressures become relatively low; then stop.

As indicated above and in the schematic flow chart (Figure B-1), the procedure is to assume the web has regressed by a fraction  $dz$ ; estimate what the resulting pressure would be, and compare the calculated pressure with the estimated pressure. This comparison is made by checking the truth of the following inequality:

$$|P - P_g| < EPS.$$

If the inequality is false, a new estimated pressure is obtained by incrementing the present estimated pressure by  $EPS$ . This process is continued until the inequality holds true.

The question that naturally arises is: "What values of  $dz$  and  $EPS$  are required to produce a satisfactory simulation?" Apparently, smaller values of  $dz$  and  $EPS$  are closer to the limit than larger values. However, smaller values of  $dz$  and  $EPS$  mean not only more iterations in finding the pressure corresponding to a given value of  $dz$ , but also more values of  $dz$  to evaluate.

To determine the values of  $dz$  and  $EPS$  that could be used to produce a good simulation and yet not require unrealistic computer time, a hypothetical rocket motor was assumed and pressure vs time curves were obtained for two cases: Case I,  $dz = 0.01$ ,  $EPS = 25$  psi; Case II,  $dz = 0.001$ ,  $EPS = 2.5$  psi. Figure B-2 illustrates the significance of using these sets of variables for  $EPS$  and  $dz$ . For Case II, ten equally-spaced points, whose ordinates are correct within  $\pm 2.5$  psi, are determined on the interval  $z = 0$  to  $z = 0.01$ . In Case I, only one point whose ordinate is correct within  $\pm 25$  psi is determined.

Figure B-3 shows pressure-time curves produced by the computer in Case I and Case II. It can be seen that the curves are remarkably close. Since Case II requires a considerable amount of computer time, the small over-all precision obtained is hardly warranted. Thus, the values of  $dz = 0.01$  and  $EPS = 25$  psi may be considered sufficient for good simulation.

The computation of the pressure and thrust vs time curves is terminated when the values computed for the thrust coefficient,  $C_f$ , become negative.

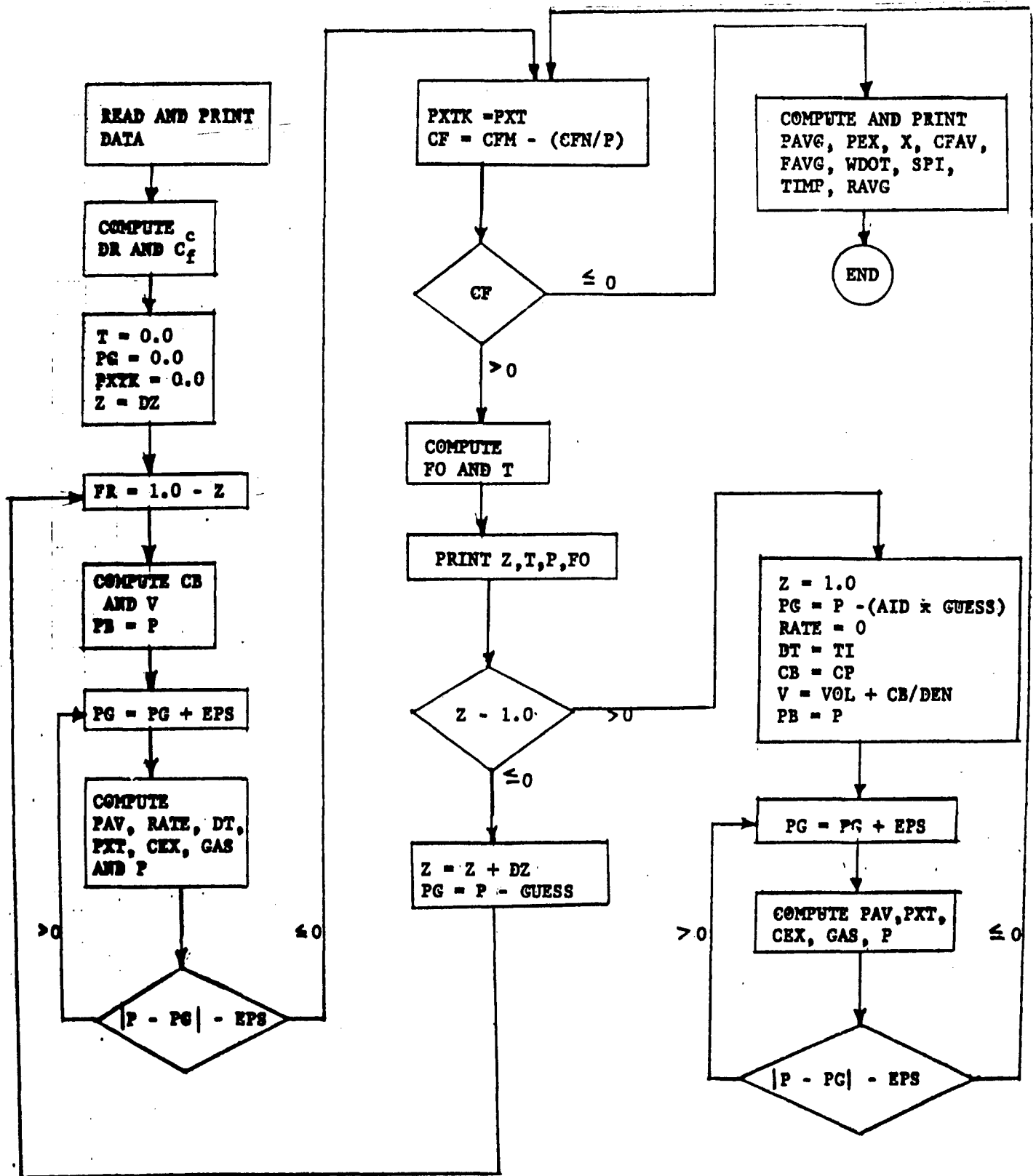


Figure B-1. Schematic Flow Chart

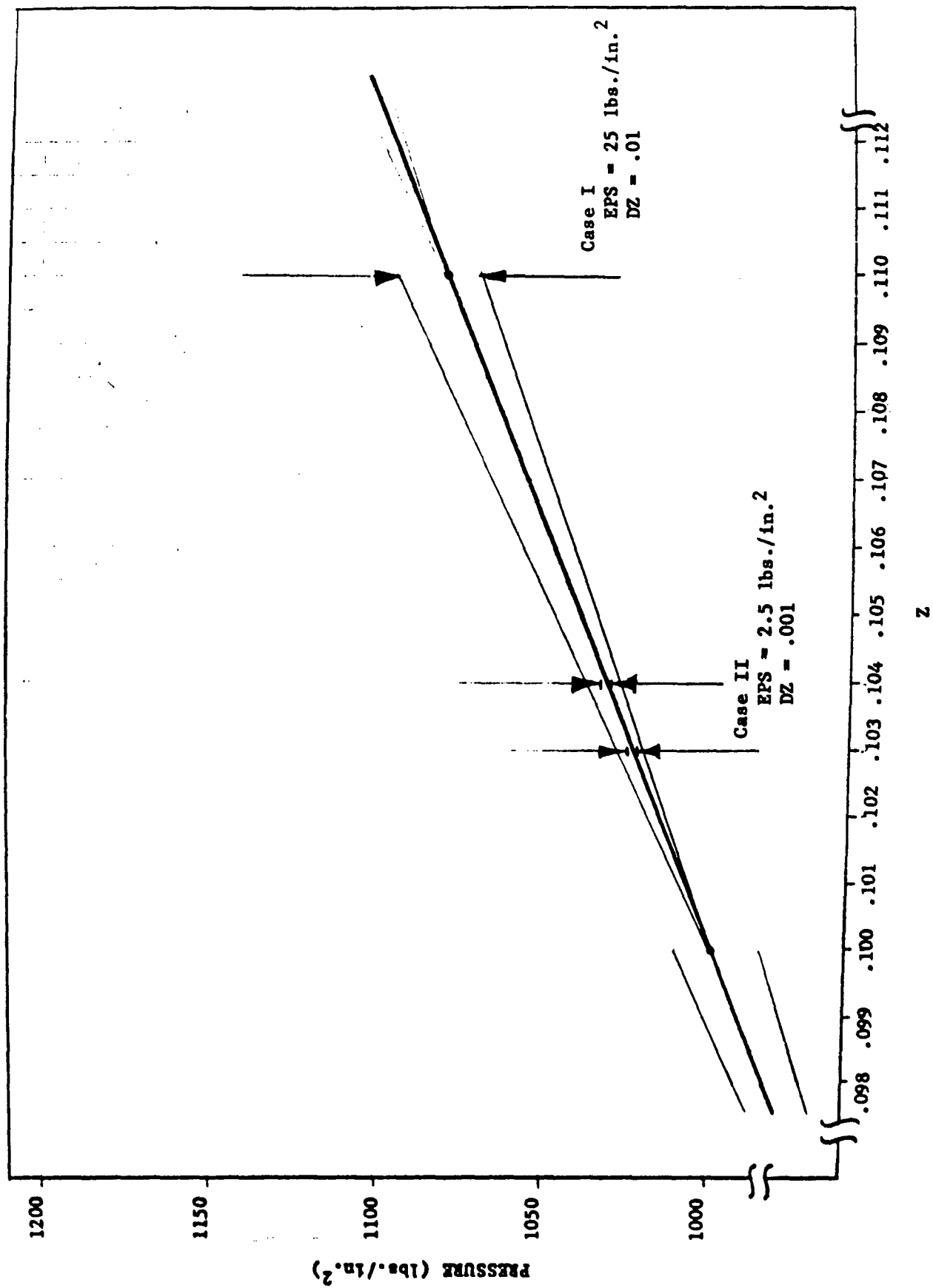


Figure B-2. Illustration of dz and EPS choices

Case I ————  $DZ = .01$ ,  $EPS = 25$  lb./sq.in.  
 Case II - - - -  $DZ = .001$ ,  $EPS = 2.5$  lb./sq.in.

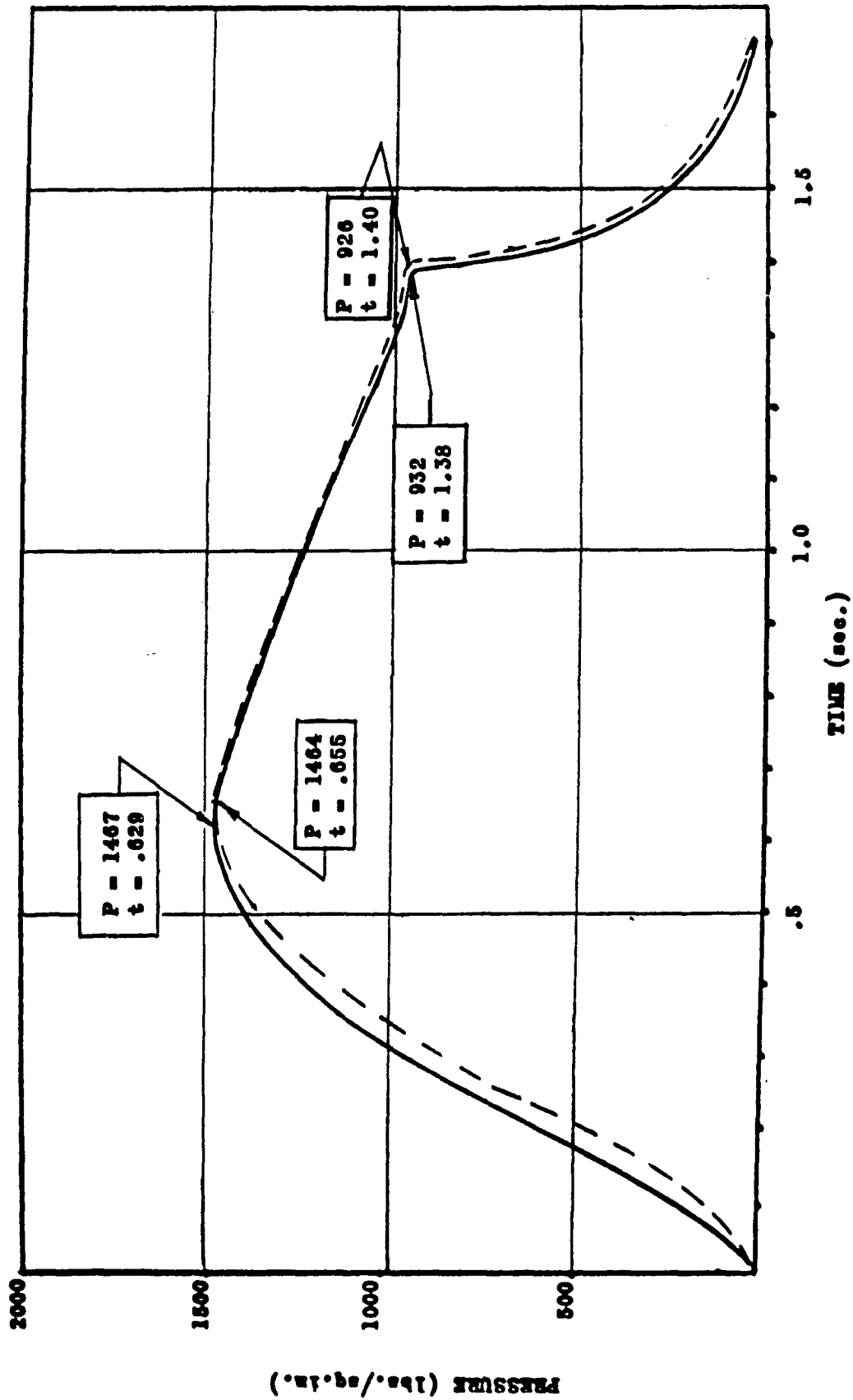


Figure B-3. Pressure vs Time for  
 $dz = 0.001$ ,  $EPS = 2.5$  psi  
 $dz = 0.01$ ,  $EPS = 25$  psi

# APPENDIX C

## USE OF NEWTON-RAPHTSON METHOD IN SOLVING FOR $C_f$

The values of  $\epsilon$ ,  $\gamma$ ,  $p_a$ , and  $p_e/P$  in the pair of parametric equations (Equations 3 and 4) are considered constant. Hence, the thrust coefficient,  $C_f$ , varies with the pressure,  $P$ . To reduce these equations into a form easier to work with, the following substitutions are made:

$$G_1 = \left(\frac{\gamma - 1}{2}\right)^{1/2} \left(\frac{2}{\gamma + 1}\right)^{\frac{\gamma+1}{2(\gamma-1)}} \quad (C-1)$$

$$G_2 = \frac{1}{\gamma} \quad (C-2)$$

$$G_3 = \frac{\gamma - 1}{\gamma} \quad (C-3)$$

$$x = \frac{p_e}{P} \quad (C-4)$$

Equation 4 then becomes

$$\epsilon = \frac{G_1}{x^{G_2} (1 - x^{G_3})^{1/2}} \quad (C-5)$$

which may be rearranged into the following form

$$x^{2G_2} - x^{2G_2+G_3} = \left(\frac{G_1}{\epsilon}\right)^2 \quad (C-6)$$

or

$$x^m - x^n = \ell \quad (C-7)$$

in which

$$\ell = \left(\frac{G_1}{\epsilon}\right)^2 = \frac{1}{\epsilon^2} \left(\frac{\gamma - 1}{2}\right) \left(\frac{2}{\gamma + 1}\right)^{\frac{\gamma+1}{\gamma-1}} \quad (C-8)$$

$$m = 2G_2 = \frac{2}{\gamma}$$

$$n = 2G_2 + G_3 = \frac{2}{\gamma} + \frac{\gamma - 1}{\gamma} = \frac{1 + \gamma}{\gamma} \quad (C-9)$$



In the physical situation,  $n$  is always greater than  $m$ , and  $x$  is always less than 1. We are interested in determining the value of  $x$  that makes Equation C-7 hold true, or, we are looking for the roots of  $f(x)$  in Equation C-10.

$$f(x) = x^m - x^n - \ell \quad (C-10)$$

As a typical example, consider the case when  $\gamma = 1.2$  and  $\epsilon = 4$ . Using Equations C-8, C-9, and C-10, respectively, it is determined that

$$\ell = 0.0021905869$$

$$m = 1.6666667$$

$$n = 1.8333333$$

Figure C-1 is a plot of  $y = x^m$  and  $y = x^n$ , in which  $m$  and  $n$  have the above values. Figure C-2 shows a plot of  $y = x^m - x^n$ , a plot of  $y = \ell$ , and, also, a plot of the difference of these graphs, viz,  $f(x) = x^m - x^n - \ell$ . It is evident from this figure that  $f(x)$  has two roots. The smaller root is desired since it is physically meaningful.

To use the Newton-Raphson (Ref 4) method, we must have an analytical expression for the derivative of  $f(x)$ .

$$f'(x) = m x^{m-1} - n x^{n-1} \quad (C-11)$$

Making sure that the initial guess for  $x$  is far to the left of the point where  $f(x)$  crosses the abscissa, compute the value for  $f(x)$  at  $x = x_0$ , determine the value of  $f(x)/f'(x)$ , add this to  $x_0$  and repeat the process using this new value for  $x$  as dictated by Equation C-12.

$$x_{n+1} = x_n + \frac{f(x_n)}{f'(x_n)} \quad (C-12)$$

The iteration ceases when  $f(x)$  is zero or very small.

Table C-I shows the result of this procedure using the values of  $\gamma$  and  $\epsilon$  cited above and using an initial guess of 0.001 for  $x$ . Only four iterations were required in determining the desired root.

Having employed the Newton-Raphson method in solving for  $x$ , and recalling that  $x$  is really  $p_0/P$ , the value for  $C_f$  may be calculated directly by means of Equation 3.

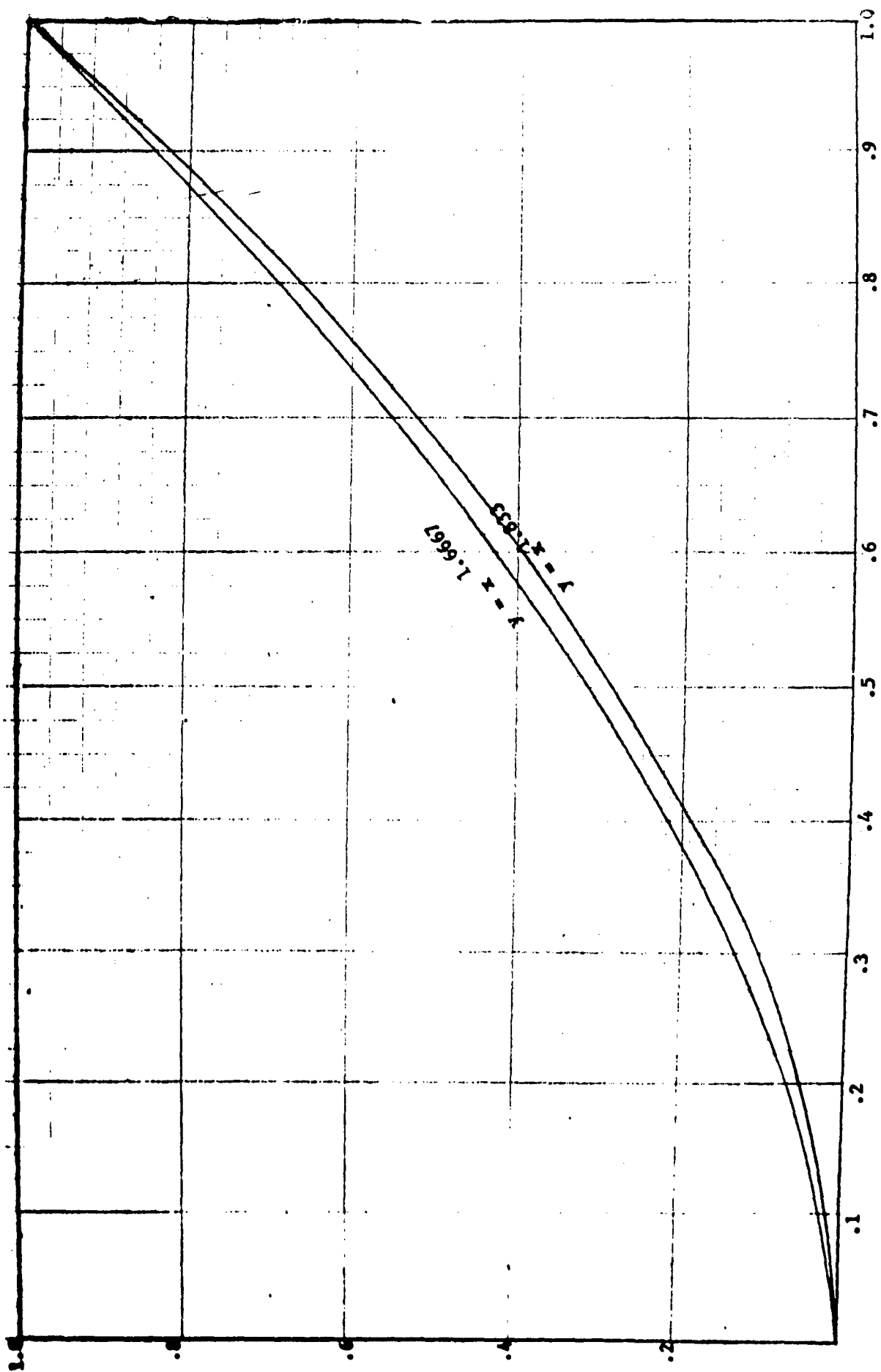


Figure C-1. Plot of  $y = x^{1.6667}$  and  $y = x^{1.8333}$

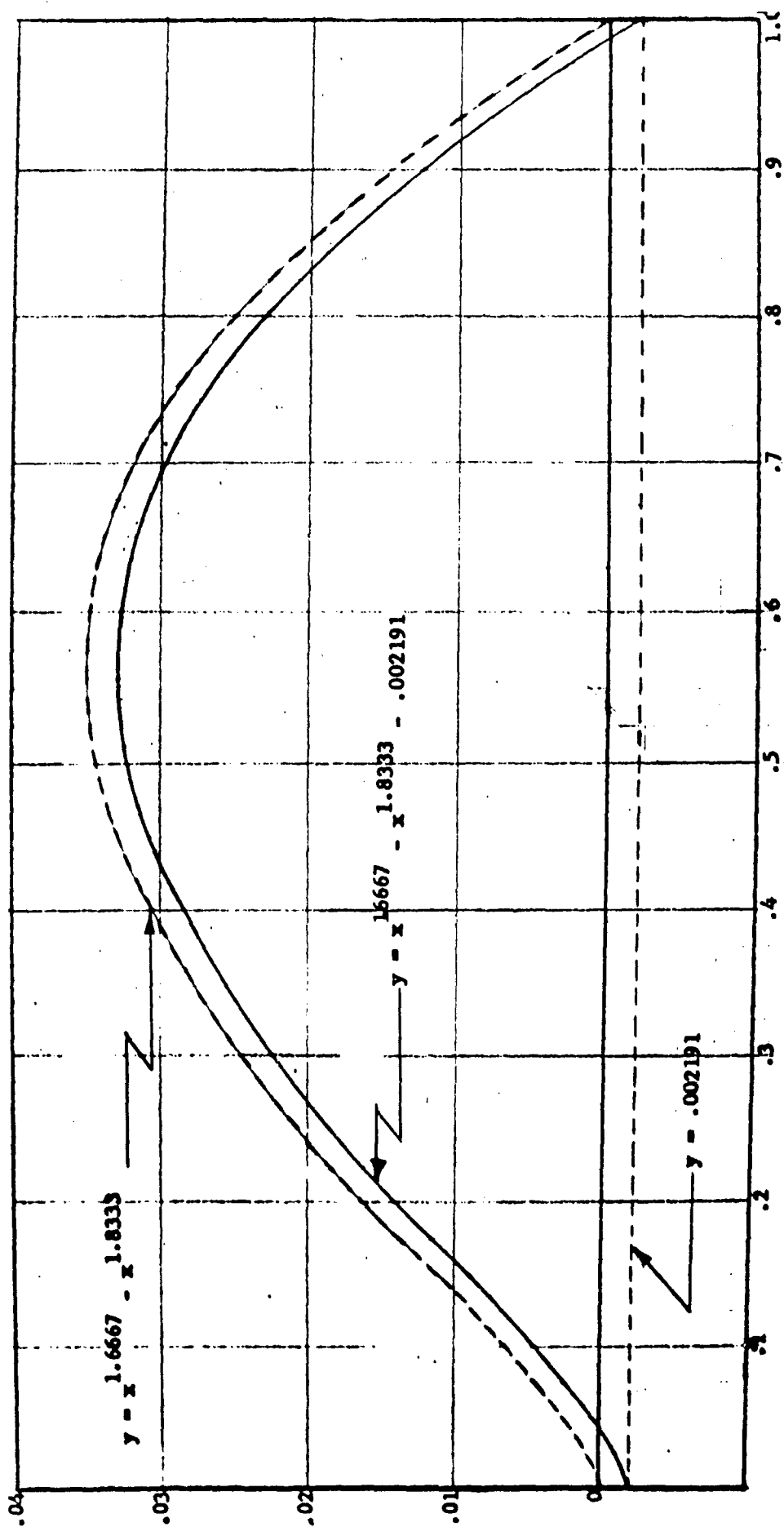


Figure C-2. Plot of  $y = x^{1.6667} - x^{1.8333}$  and  $y = x^{1.6667} - x^{1.8333} - 0.002191$

TABLE C-1. Values Obtained in a Newton-Raphson Iterative Procedure  
for solving  $x^{1.6666667} - x^{1.8333333} - 0.0021905869$

$x_n$	$f(x_n)$	$f'(x_n)$	$f(x_n)/f'(x_n)$	$x_{n+1}$
0.0010000000	-0.0021837492	0.018691532	-0.20091255	0.20191255
0.20191255	0.14074955	0.090326570	0.15582298	0.046089570
0.046089570	0.00018654790	0.073131940	0.002508403	0.043538730
0.043538730	0.0000018187	0.071691210	0.0000253685	0.043513361
0.043513361	0.0			

## APPENDIX D

### THE QUANTITY $\varphi \delta$

The dimensionless quantity  $\varphi \delta$  (ref 2) in Equation 2 is a combined efficiency factor and nozzle expansion factor. The value  $\varphi$  is an empirically derived constant and is usually about 0.96 for good nozzle designs. The value  $\delta$  is expressed as

$$\delta = 0.5 (1 + \cos \alpha) \quad (D-1)$$

where  $\alpha$  is the half angle of the expansion cone.

Figure D-1 is a plot of the combined factor  $\varphi \delta$  as a function of  $\alpha$  for values of  $\varphi$  equal to 0.94, 0.96, and 1.0

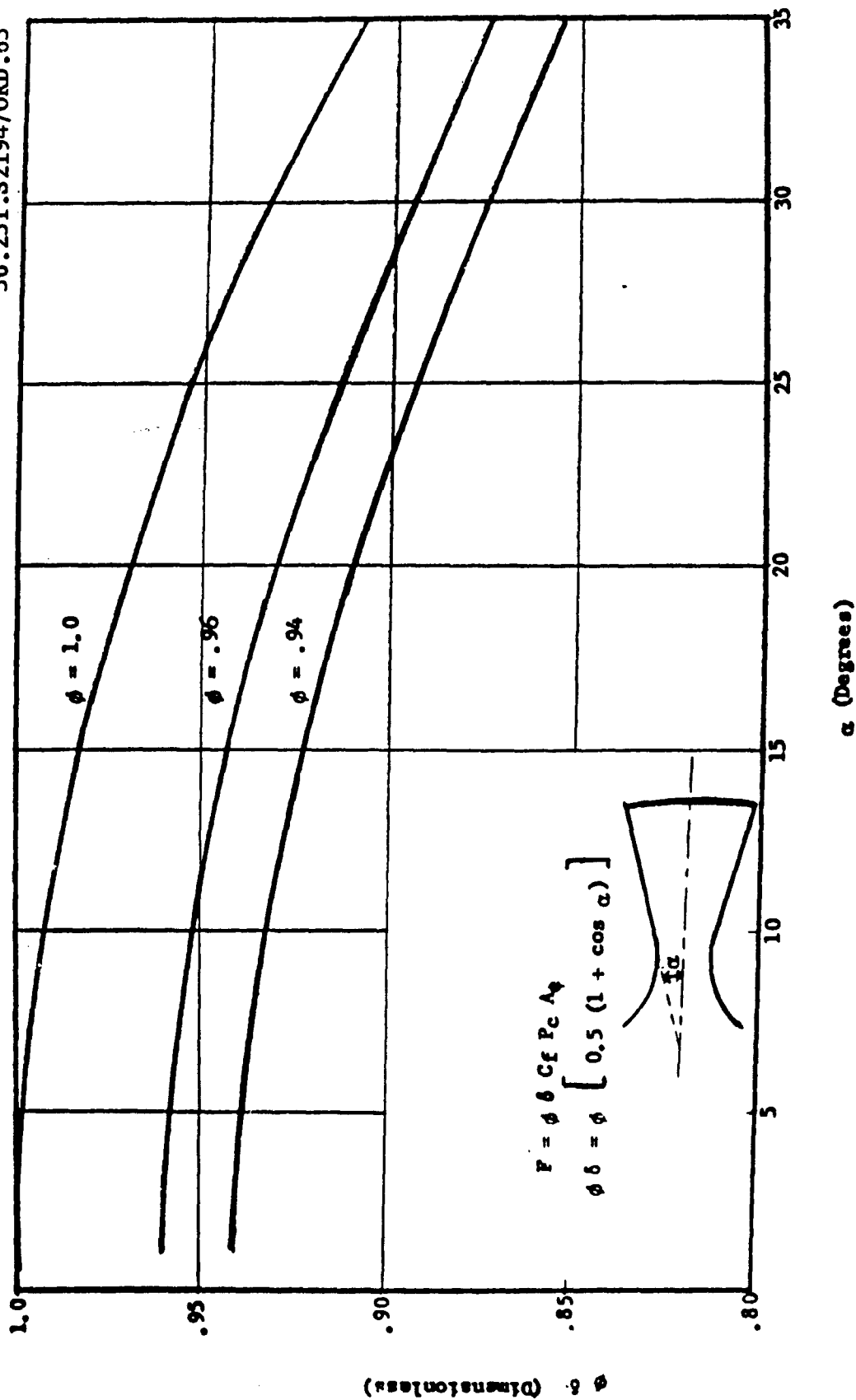


Figure D-1. Combined Energy Loss Correction,  $\phi$ , and Divergence Angle Correction,  $\delta$ , vs Divergence Angle,  $\alpha$

# APPENDIX E

## THE FORTRAN PROGRAMS

### Rocket Motor Performance Studies - Fortran I

TRACE

C  
C

ROCKET MOTOR PERFORMANCE  
STUDIES

```

READ: P
READ: CP,WEB,FORM
READ: FP,DEN,B,BN,G,TK
READ: VOL,AT,E,DELT
READ: CD,PA
READ: EPS,GUESS,XO,DZ,TI,AID
PRINT:P
PRINT:CP,WEB,FORM
PRINT:FP,DEN,B,BN,G,TK
PRINT:VOL,AT,E,DELT
PRINT:CD,PA
PRINT:EPS,GUESS,XO,DZ,TI,AID
DRUDZ=ED
G1=(G-1)/2.0
EXP=(G+1)/(G-1)
G2=(2.0/(G+1))*EXP
AL=(G1+G2)/(E+E)
AM=2.0/G
AN=(1+G)/G
CG4=(2.0*G*G/(G-1.0))*G2
CG5=(G-1)/G
X=XO
1 FX=(X**AM)-(X**AN)-AL
IF((ABS(FX))-1.0E-7)2,2,3
3 FPX=(AM*(X**(AM-1)))
1 -(AN*(X**(AN-1)))
H=FX/FPX
X=X-H
GO TO 1
2 DEL=CG5*LGN(FX)
IF(DEL)50,51,51
50 DEL=U-U-DEL
Z1=1.0/EXP(DEL)
GO TO 52
51 Z1=EXP(DEL)
54 Z1=CG4*(1.0-Z1)
Z2=SURTF(Z1)
Z3=EX
CFM=Z2+Z3
CFN=EX*PA
TNO=U
PGNO=O
PXTKNO=O
ZNUZ
61 FR=1.0-U-Z
CBNZ=(1.0+(FORM*FR))*CP
VNVOL=(CB/DEN)
PBNP
64 PGNP=EPS
PAV=(PB+PG)/2.0
RATE=BN*(PAV*BN)
DTNM/HATE
PXTN=PTK*(PAV*DT)
CEX=CD*AT*PXT
GAS=CB-CEX
70 P=(12.0*GAS*FP*TK/V)+PA
IF((ABS(P-PG))-EPS)63,63,62
63 PXTN=PT
CFN=CFM-(CFN/P)
IF(CF)67,67,64
64 FORCF=PA*DELT

```

```

TNT=UT
TGAS=TK*GAS
PRINT:Z,T,P,FO
IF(Z-1.0)65,66,66
65 Z=Z+UZ
PGNP=GUESS
GO TO 61
66 Z=1.0
PGNP=(AIU*GUESS)
RATE=U.O
DTNTI
CB=CP
VNVOL=(CD/UDEN)
PBNP
71 PGNP=PG+EPS
PAV=(PB+PG)/2.0
PXTN=PTK*(PAV*UT)
CEX=CD*AT*PXT
GAS=CB-CEX
P=(12.0*GAS*FP*TK/V)+PA
IF((ABS(P-PG))-EPS)63,63,71
67 PAV=NPXTK/T
PEX=PAVG*X
PRINT:PAVG,PEX,X
CFAV=CFM-(CFN/PAVG)
PRINT:CFAV
FAVG=CFAV*PAVG*AT*DELT
PRINT:FAVG
DDOT=CD*AT*PAVG
PHI=T*DDUT
SPI=FAVG/DDUT
PRINT:SPI
TIMP=FAVG*T
PRINT:TIMP
RAVG=BN*(PAVG*BN)
PRINT:RAVG
END

```

Reg 36.231.S2183/ORD.63

22



# APPENDIX F

## EXAMPLE - COMPARISON OF COMPUTER AND EXPERIMENTAL RESULTS

The parameters used to simulate the operation of the XM15 Rocket Catapult are presented in Table F-I.

TABLE F-I. Parameters Describing the XM15 Rocket Motor

$P_0 = 250 \text{ lb/in.}^2$	$A_t = 19.24 \text{ in.}^2$
$c_p = 82 \text{ lb}$	$\epsilon = 4.662$
$w = 0.88 \text{ in.}$	$\phi \delta = .95$
$\theta = .18$	$C_D = .00691$
$F = 297,700 \text{ ft lb/lb}$	$EPS = 25 \text{ lb/in.}^2$
$\rho = 0.0576 \text{ lb/in.}^3$	$P_g = 100 \text{ lb/in.}^2$
$B = 0.086 (\text{in./sec})(\text{in.}^2/\text{lb})^n$	$x_0 = .001$
$n = .42$	$dz = .01$
$\gamma = 1.23$	$T_i = .005$
$T_k = .815$	$AID = 8.5$
$V = 2120 \text{ in.}^3$	

Figure F-1 shows a comparison between the calculated pressure vs time curve and a pressure vs time curve obtained from a test firing of the XM15 rocket catapult. Figure F-2 is a plot of the corresponding calculated thrust vs time curve.

Table F-II is a listing of additional parameters computed at the end of the program.

TABLE F-II. Additional Computed Parameters

$p_{ex}/P = .03303$	$\dot{w} = 146.4 \text{ lb/sec}$
$p_{ex} = 38.38 \text{ lb/in.}^2$	$I_{sp} = 214.6 \text{ sec}$
$\bar{P} = 1101.4 \text{ lb/in.}^2$	$I_{tot} = 17,590 \text{ lb-sec}$
$\bar{C}_f = 1.561$	$\bar{r} = 1.629 \text{ in./sec}$
$\bar{F} = 3,142 \text{ lb}$	

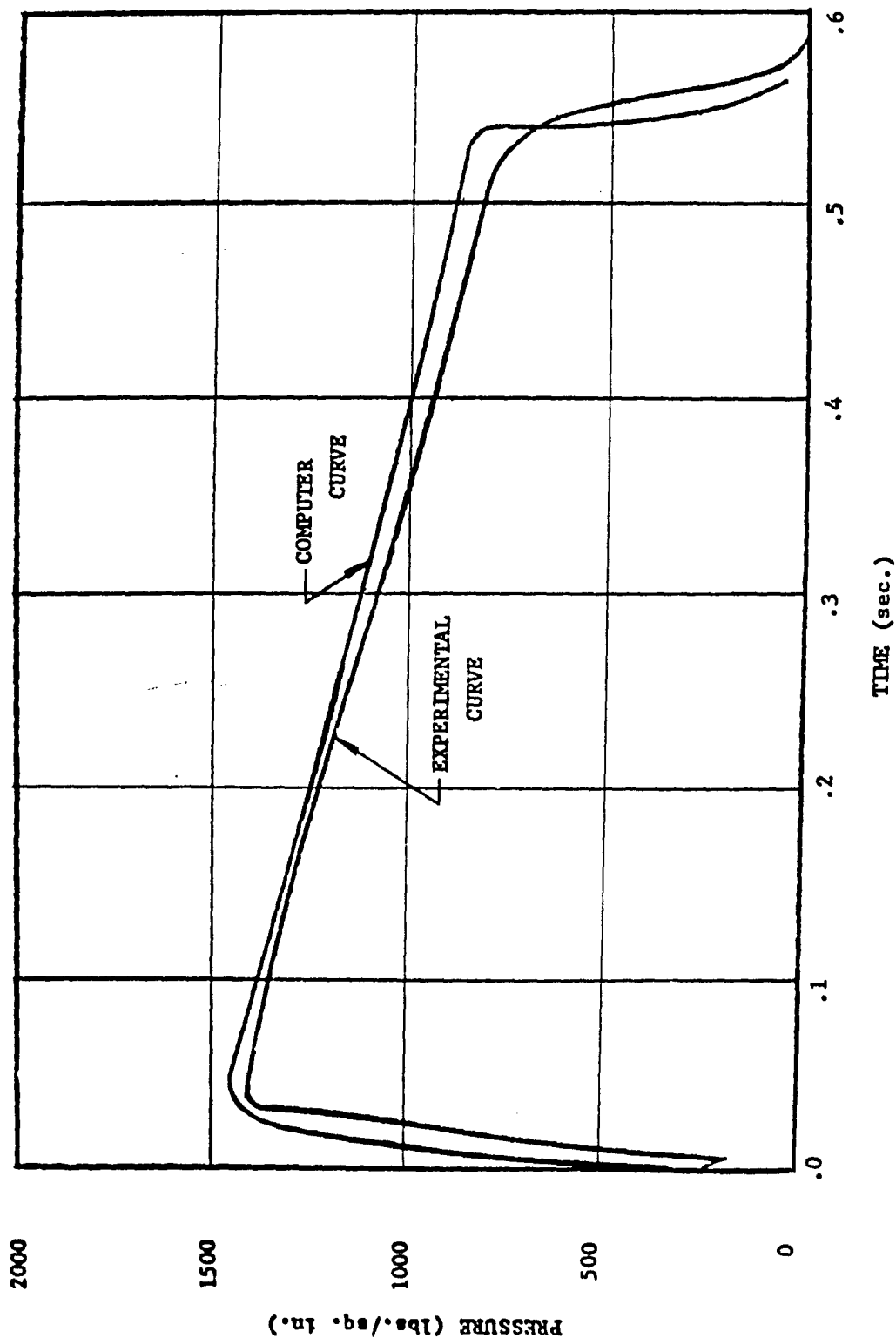


Figure F-1. Comparison between Computer Pressure vs Time Curve and Experimental Pressure vs Time Curve obtained from XM15 Test Firing

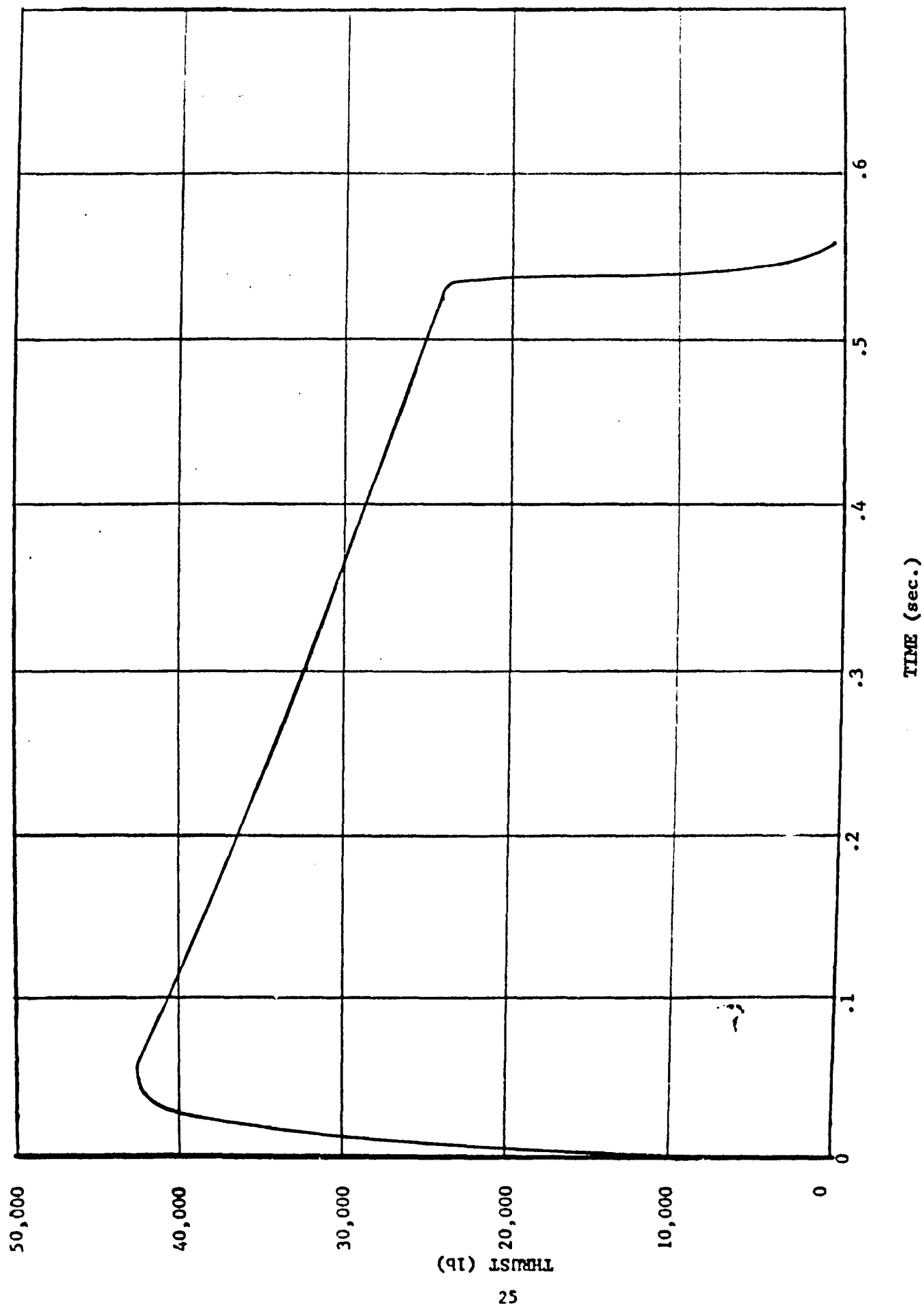


Figure F-2. Computer Thrust vs Time Curve, simulating XM15 Test Firing

## REFERENCES

1. J. Corner, Theory of the Interior Ballistics of Guns, New York: Chapman and Hall, 1950.
2. Francis A. Warren, Rocket Propellants, New York: Reinhold Publishing Corporation, 1958.
3. Princeton University, Jet Propulsion Engines, Princeton: Princeton University Press, 1959.
4. James B. Scarborough, Numerical Mathematical Analysis, Baltimore: The Johns Hopkins Press, ed ed, 1955.

# DISTRIBUTION

## U.S.Army

- |  |  |
|--|--|
| 1 - Hq, U.S.Army Materiel Command<br>Attn: AMCRD-DE-W<br>Washington 25, D. C.  | 1 - Commanding General<br>U.S.Army Test and Evaluation<br>Command<br>Attn: Director of Aviation<br>Materiel Testing<br>Aberdeen Proving Ground, Md.      |
| 1 - Attn: AMCRD-DE-MO  |  |
| 1 - Attn: AMCPM  | 1 - Attn: Director of General<br>Equipment Testing   |
| 1 - Commanding General<br>U.S.Army Munitions Command<br>Attn: AMSMU-RE-R<br>Picatinny Arsenal<br>Dover, New Jersey                                   | 1 - Attn: Liaison Office, CDC  |
|  | 2 - Attn: Technical Library  |
| 1 - Attn: AMSMU-RE-E   | 1 - Commanding General<br>U.S.Army Weapons Command<br>Attn: Chief Scientist, AMSWE-SAS<br>Rock Island Arsenal<br>Rock Island, Illinois                   |
| 1 - Attn: AMSMU-RE-EA  |  |
| 1 - Attn: AMSMU-RE-EE  | 1 - Commanding General<br>U.S.Army Missile Command<br>Attn: Director, Research and<br>Development Directorate<br>Redstone Arsenal<br>Huntsville, Alabama |
| 1 - Attn: AMSMU-RE-S   |  |
| 1 - Attn: AMSMU-LC<br>CDC Liaison Officer  | 1 - Commanding General<br>U.S.Army Electronics Command<br>Attn: Director of Research and<br>Development, AMSEL-RD<br>Fort Monmouth, New Jersey           |
| 1 - Attn: AMSMU-LM, U.S.Marine<br>Corps Liaison Officer  |  |
| 1 - Commanding General<br>U.S.Army Mobility Command<br>Attn: Directorate of Research &<br>Development, AMSMO-R<br>3811 VanDyke<br>Center Line, Mich. | 1 - Commanding General<br>U.S.Army Supply and<br>Maintenance Command<br>Attn: Director of Maintenance<br>AMSSM-M<br>Washington 25, D. C.                 |
| 1 - Attn: AMSMO-RR   |  |
| 1 - Attn: AMSMO-RD   | 1 - Attn: Director of Supply<br>AMSSM-S  |
| 1 - Attn: AMSMO-RL   |  |
| 1 - Attn: AMSMO-PR   | 1 - U.S.Army Natick Laboratory<br>Attn: AMXRE-AAE<br>Natick, Massachusetts   |
| 1 - Attn: Liaison Office, CDC  |  |

- 1 - Commanding General  
U.S.Army Aviation and Surface  
Materiel Command  
Attn: Technical Director  
P. O. Box 209, Main Office  
St. Louis, Missouri
  - 1 - Attn: Director, Engineering
  - 1 - Attn: Liaison Office, CDC
  - 1 - Commanding General  
U.S.Army Comb;t Development  
Command  
Attn: Scientific Advisor, CDCSA  
Fort Belvoir, Virginia
  - 1 - Attn: Director, Operations  
Research & Experimental,  
CDCRE
  - 1 - Attn: Director, Plans, Programs,  
& Intelligence, CDCPI
  - 1 - Attn: Director, Concepts &  
Doctrine Development  
CDCCD
  - 1 - Attn: Director, Materiel Re-  
quirements, CDCMR
  - 1 - Attn: Director, Doctrine &  
Organization Media,  
CDCDM
  - 1 - Commanding Officer  
Rock Island Arsenal  
Attn: Technical Director  
Rock Island, Illinois
  - 1 - Attn: Chief, Design Engineering  
Branch, SWERI-RDD
  - 1 - Commanding Officer  
Picatinny Arsenal  
Attn: Technical Director  
Dover, New Jersey
  - 1 - Commanding Officer  
U.S.Army Research and Devel-  
opment Laboratory  
Attn: Technical Director  
Edgewood Arsenal, Maryland
  - 1 - Commanding Officer  
U.S.Army Research Office-Durham  
Attn; CRD-AA-E  
Box CM, Duke Station  
Durham, North Carolina
  - 1 - Attn: CRD-AA-X
  - 1 - U.S.Army Field Office, USAFSSD  
Bldg #1, Room 250  
5730 Arbor Vitae Blvd.  
Inglewood, California
  - 1 - Commanding Officer  
Harry Diamond Laboratories  
Attn: Technical Director  
Washington 25, D. C.
  - 1 - Attn: AMXDO-TIB
  - 1 - Commanding Officer  
U.S.Army Aviation Center  
Attn: Director, USAATBG  
Fort Rucker, Alabama
  - 1 - Attn: Director, USAATHRE
  - 1 - Attn: Director, USABAAR
  - 1 - Commanding Officer  
U.S.Army Transportation  
Research Command  
Attn: Technical Director  
Fort Eustis, Virginia
- National Aeronautics and  
Space Administration
- 1 - Dir, NASA Langley Research Center  
Attn: Mrs. E.R.Gilman, Librarian  
Langley Station  
Hampton, Virginia, 23365

- 1 - Director, NASA George C.  
Marshall Space Flight Center  
Attn: Saturn System Office  
Huntsville, Alabama
- 1 - Attn: Light and Medium  
Vehicles Office
- 1 - Attn: Propulsion and Energy  
Division
- 1 - Attn: Future Projects Office
- 1 - Attn: Research Projects Office
- 1 - Director, NASA Manned Space-  
craft Center  
Attn: Gemini Spacecraft  
Projects Office  
Houston 1, Texas
- 2 - Attn: Mr. Chas. M. Grant, Jr.  
Chief, Technical Informa-  
tion Division, Code AGI
- 2 - Attn: Apollo Spacecraft  
Projects Office
- 1 - Attn: Office of Asst Director,  
Research \* Development
- 1 - Attn: Spacecraft Research Div
- 1 - Attn: Crew System Division
- 1 - Director  
NASA Goddard Space Flight Center  
Greenbelt, Maryland
- 1 - Director  
NASA Jet Propulsion Laboratory  
Pasadena, Calif.
- 1 - Director  
NASA Lewis Research Center  
Cleveland, Ohio

U.S.Navy

- 1 - Chief, Bureau of Naval Weapons  
Department of the Navy  
Attn: RMMO  
Washington 25, D. C.
- 1 - Attn: RMMP
- 1 - Commanding Officer  
U.S.Naval Weapons Laboratory  
Attn: Mr. R. I. Rossbacher,  
Code WC  
Dahlgren, Virginia
- 1 - Commanding Officer  
U.S.Naval Ordnance Test Station  
Attn: D. H. Strietzel  
Code 4574  
China Lake, Calif.
- 1 - Commanding Officer  
U.S.Naval Ordnance Plant  
Attn: Code PD-270  
Macon, Georgia
- 1 - Commanding Officer  
Naval Air Depot-Crane  
Attn: Code 4100  
Crane, Indiana
- 1 - Director  
Air Crew Equipment Laboratory  
Naval Air Engineering Center  
Attn: C. T. Koochembere,  
Group Manager  
Philadelphia 12, Pa.
- 1 - Commander  
Naval Air Development Center  
Attn: Technical Library  
Johnsville, Pennsylvania

U.S.Air Force

- 3 - Commander  
Aeronautical Systems Division  
Attn: ASNRMF-24, Mr. R. Dobhek  
Wright-Patterson AFB, Ohio

- 3 - Commander  
Aeronautical Systems Division  
Attn: ASNMES, C. K. Hodell  
Wright-Patterson AFB, Ohio
- 1 - Attn: ASNMEP, Mr. A. E. Varble
- 1 - Attn: ASNMEP, C. E. Grindstaff
- 1 - Attn: ASZTE, Capt J. J. Sollars
- 1 - Attn: ASZWO, Capt F. H. Briggs
- 1 - Attn: ASZFO-A
- 1 - Attn: ASZHPC, Capt W. C. Knothe
- 1 - Attn: ASNRH, Mr. Geo. C. Dickson
- 1 - Attn: ASBMB, Maj N. P. Clarke
- 1 - Attn: ASWMRD, Mr. W. M. Cheslak
- 1 - Attn: ASAPRL
- 1 - Attn: ASZB, Col C. A. Gayle
- 1 - Directorate of Aerospace Safety  
Attn: Chief, Life Sciences Group  
AFIAS-L  
Norton Air Force Base, Calif.
- 1 - Commander  
Ogden Air Materiel Area  
Attn: OONEAA  
Hill Air Force Base Utah
- 1 - Commander  
2705th Airmunitions Wing (AMC)  
Attn: OGYTC  
Hill Air Force Base, Utah
- 1 - Commander  
Edwards Air Force Base  
Attn: DGSM, 6593d Test Group  
Edwards, Calif.
- 1 - USAF Special Weapons Center  
Attn: SWOI  
Kirtland Air Force Base, N. M.

#### Other

- 10 - Defense Documentation Center  
Cameron Station  
Alexandria, Virginia 22314
- 1 - Chemical Propulsion Information  
Agency  
Johns Hopkins University  
Silver Spring, Maryland
- 1 - Scientific and Technical  
Information Facility  
Attn: NASA Representative  
(S-AK/DC)  
P.O. Box 5700  
Bethesda, Maryland
- 1 - ICRPG Working Group on Design  
Automation  
The Johns Hopkins University  
8621 Georgia Avenue  
Silver Springs, Md.
- 1 - Mr. Boyd C. Brinton  
Propulsion Systems Analysis Division  
Thiokol Chemical Corporation  
Wasatch Division  
Brigham City, Utah



AD-  
FRANKFORD ARSENAL, Research and Development Group,  
Pittman-Dunn Institute for Research, Philadelphia, Pa.

DIGITAL COMPUTER SIMULATION OF THE PERFORMANCE OF SMALL  
SOLID PROPELLANT ROCKET MOTORS by James M. DeLeo

FA Rpt R-1694, Sep 63; 30 pp incl tables and illus.  
ONS Code 5010.11.844.00 DA Project 5897-01-006

A mathematical model of a small solid propellant  
rocket has been programmed for use with a Univac Solid  
State 90 Digital Computer by means of Fortran I and For-  
tran II. In addition to calculating the pressure-time  
and thrust-time transients, the program computes time-  
averaged pressure, thrust coefficient, thrust, flow rate,  
and burning rate, as well as total impulse and specific  
impulse.

The report includes the derivation of equations, the  
method of solution, the program in Fortran I and Fortran  
II, an example solution compared with experiment, and a  
recommended procedure for use of the computer program in  
the design and development of a small solid propellant  
rocket motor.

UNCLASSIFIED

1. Solid Propellant Rockets
2. Digital Computer
3. Mathematical Simulation
4. Computer Simulation
5. Fortran Programs
6. Propellant Actuated Devices
7. Automated Design

I. FA Report R-1694, Sep 63  
II. DeLeo, James M.  
III. ONS Code 5010.11.844.00  
DA Project 5897-01-006

DISTRIBUTION LIMITATIONS:  
None; obtain copies from DDC.

UNCLASSIFIED

AD-  
FRANKFORD ARSENAL, Research and Development Group,  
Pittman-Dunn Institute for Research, Philadelphia, Pa.

DIGITAL COMPUTER SIMULATION OF THE PERFORMANCE OF SMALL  
SOLID PROPELLANT ROCKET MOTORS by James M. DeLeo

FA Rpt R-1694, Sep 63; 30 pp incl tables and illus.  
ONS Code 5010.11.844.00 DA Project 5897-01-006

A mathematical model of a small solid propellant  
rocket has been programmed for use with a Univac Solid  
State 90 Digital Computer by means of Fortran I and For-  
tran II. In addition to calculating the pressure-time  
and thrust-time transients, the program computes time-  
averaged pressure, thrust coefficient, thrust, flow rate,  
and burning rate, as well as total impulse and specific  
impulse.

The report includes the derivation of equations, the  
method of solution, the program in Fortran I and Fortran  
II, an example solution compared with experiment, and a  
recommended procedure for use of the computer program in  
the design and development of a small solid propellant  
rocket motor.

UNCLASSIFIED

1. Solid Propellant Rockets
2. Digital Computer
3. Mathematical Simulation
4. Computer Simulation
5. Fortran Programs
6. Propellant Actuated Devices
7. Automated Design

I. FA Report R-1694, Sep 63  
II. DeLeo, James M.  
III. ONS Code 5010.11.844.00  
DA Project 5897-01-006

DISTRIBUTION LIMITATIONS:  
None; obtain copies from DDC.

UNCLASSIFIED

AD-  
FRANKFORD ARSENAL, Research and Development Group,  
Pittman-Dunn Institute for Research, Philadelphia, Pa.

DIGITAL COMPUTER SIMULATION OF THE PERFORMANCE OF SMALL  
SOLID PROPELLANT ROCKET MOTORS by James M. DeLeo

FA Rpt R-1694, Sep 63; 30 pp incl tables and illus.  
ONS Code 5010.11.844.00 DA Project 5897-01-006

A mathematical model of a small solid propellant  
rocket has been programmed for use with a Univac Solid  
State 90 Digital Computer by means of Fortran I and For-  
tran II. In addition to calculating the pressure-time  
and thrust-time transients, the program computes time-  
averaged pressure, thrust coefficient, thrust, flow rate,  
and burning rate, as well as total impulse and specific  
impulse.

The report includes the derivation of equations, the  
method of solution, the program in Fortran I and Fortran  
II, an example solution compared with experiment, and a  
recommended procedure for use of the computer program in  
the design and development of a small solid propellant  
rocket motor.

UNCLASSIFIED

1. Solid Propellant Rockets
2. Digital Computer
3. Mathematical Simulation
4. Computer Simulation
5. Fortran Programs
6. Propellant Actuated Devices
7. Automated Design

I. FA Report R-1694, Sep 63  
II. DeLeo, James M.  
III. ONS Code 5010.11.844.00  
DA Project 5897-01-006

DISTRIBUTION LIMITATIONS:  
None; obtain copies from DDC.

UNCLASSIFIED

AD-  
FRANKFORD ARSENAL, Research and Development Group,  
Pittman-Dunn Institute for Research, Philadelphia, Pa.

DIGITAL COMPUTER SIMULATION OF THE PERFORMANCE OF SMALL  
SOLID PROPELLANT ROCKET MOTORS by James M. DeLeo

FA Rpt R-1694, Sep 63; 30 pp incl tables and illus.  
ONS Code 5010.11.844.00 DA Project 5897-01-006

A mathematical model of a small solid propellant  
rocket has been programmed for use with a Univac Solid  
State 90 Digital Computer by means of Fortran I and For-  
tran II. In addition to calculating the pressure-time  
and thrust-time transients, the program computes time-  
averaged pressure, thrust coefficient, thrust, flow rate,  
and burning rate, as well as total impulse and specific  
impulse.

The report includes the derivation of equations, the  
method of solution, the program in Fortran I and Fortran  
II, an example solution compared with experiment, and a  
recommended procedure for use of the computer program in  
the design and development of a small solid propellant  
rocket motor.

UNCLASSIFIED

1. Solid Propellant Rockets
2. Digital Computer
3. Mathematical Simulation
4. Computer Simulation
5. Fortran Programs
6. Propellant Actuated Devices
7. Automated Design

I. FA Report R-1694, Sep 63  
II. DeLeo, James M.  
III. ONS Code 5010.11.844.00  
DA Project 5897-01-006

DISTRIBUTION LIMITATIONS:  
None; obtain copies from DDC.

UNCLASSIFIED

