

**UNCLASSIFIED**

**AD 4 2 3 3 3 2**

**DEFENSE DOCUMENTATION CENTER**

**FOR**

**SCIENTIFIC AND TECHNICAL INFORMATION**

**CAMERON STATION, ALEXANDRIA, VIRGINIA**



**UNCLASSIFIED**

NOTICE: When government or other drawings, specifications or other data are used for any purpose other than in connection with a definitely related government procurement operation, the U. S. Government thereby incurs no responsibility, nor any obligation whatsoever; and the fact that the Government may have formulated, furnished, or in any way supplied the said drawings, specifications, or other data is not to be regarded by implication or otherwise as in any manner licensing the holder or any other person or corporation, or conveying any rights or permission to manufacture, use or sell any patented invention that may in any way be related thereto.

**Best  
Available  
Copy**

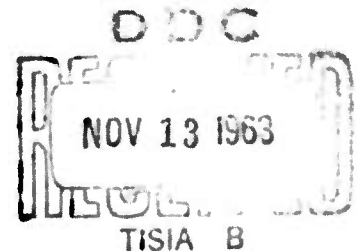
423332

A SIMPLIFIED VERSION OF DANTZIG'S QUADRATIC PROGRAMMING ALGORITHM  
FOR SOLUTIONS USING A MEDIUM-SIZED DIGITAL COMPUTER

BY  
ROY E. MURPHY

TECHNICAL REPORT NO. 125  
October 31, 1963

PREPARED UNDER CONTRACT Nonr-225(50)  
(NR-047-004)  
FOR  
OFFICE OF NAVAL RESEARCH



INSTITUTE FOR MATHEMATICAL STUDIES IN THE SOCIAL SCIENCES  
STANFORD UNIVERSITY  
STANFORD, CALIFORNIA



A SIMPLIFIED VERSION OF DANTZIG'S QUADRATIC PROGRAMMING ALGORITHM  
FOR SOLUTIONS USING A MEDIUM-SIZED DIGITAL COMPUTER

by  
Roy E. Murphy

TECHNICAL REPORT NO. 125

October 31, 1963

PREPARED UNDER CONTRACT Nonr-225(50)

(NR-047-004)

FOR

OFFICE OF NAVAL RESEARCH

Reproduction in Whole or in Part is Permitted for  
any Purpose of the United States Government

INSTITUTE FOR MATHEMATICAL STUDIES IN THE SOCIAL SCIENCES  
STANFORD UNIVERSITY  
STANFORD, CALIFORNIA

A SIMPLIFIED VERSION OF  
DANTZIG'S QUADRATIC PROGRAMMING ALGORITHM  
FOR SOLUTIONS USING A  
MEDIUM-SIZED DIGITAL COMPUTER\*

by

R. E. Murphy  
Stanford University

1. Introduction

In a recent paper by G. Dantzig [1], an algorithm was introduced to obtain solutions for certain quadratic programming problems by a modified simplex program. This programming algorithm follows closely the methods employed by Wolfe and Markowitz [2]. In this introduction, we shall outline Dantzig's theorems for those unfamiliar with this method, and also develop the notation used in this paper.

1.1. The Criterion Function

We shall formulate the problem as the constrained maximization of a convex quadratic function in  $x$ . The criterion function (in vector/matrix notation) will be

$$(1.1) \quad \pi(x) = x^t b - \frac{1}{2} x^t A x,$$

where

$$x \geq 0,$$

$$x^t A x \geq 0 \text{ for all } x, \text{ and } A \text{ is a symmetric matrix.}$$

---

\* This research was supported by Varian Associates, Inc., Palo Alto, California. Publication was supported by Office of Naval Research Contract Nonr-225(50) at Stanford University. Reproduction in whole or in part is permitted for any purpose of the United States Government.

I wish to thank Mr. G. Kuykendall and Mrs. L. Owens of I.B.M., San Jose, California, for their help in introducing the author to 1401 Fortran and in testing this program.

Some of the columns of the  $A$  matrix may have zero elements. The activities associated with these zero rows and columns will be linear activities, not quadratic activities. Thus, by suitable construction of the  $A$  matrix, mixed quadratic/linear solutions may be obtained.

### 1.2. The Constraint Function

In addition to the positivity requirement for  $x$ , we require that the following equation (in vector/matrix notation) be satisfied:

$$(1.2) \quad Cx = d .$$

### 1.3. A Note on Slack Variables

The vector  $x$  is defined so that it contains the required slack components to make (1.2) hold as an equality.

### 1.4. The Kuhn-Tucker [3] Optimality Conditions

A solution to (1.1) and (1.2), say the vector  $x^*$ , can be segregated into two subsets. Let  $X^0$  be the subset of components of  $x$  which are zero, and  $X^+$  the subset of components of  $x$  which are positive. The solution,  $x^*$ , is the optimal solution (leads to a maximum  $\pi(x)$  under constraints, (1.2)) if

$$(1.3) \quad b - Ax^* - C^t \lambda^* = 0 \quad \text{for } x^* \in X^+$$

$$(1.4) \quad b - Ax^* - C^t \lambda^* < 0 \quad \text{for } x^* \in X^0 ,$$

and

$$(1.5) \quad Cx^* = d .$$

The vector  $\lambda^*$  is defined as the Lagrangian multiplier vector.

### 1.5. The Complementary Vector

Suppose we define a new vector  $u^*$  such that

$$(1.6) \quad u^{*t}x = 0, \quad u^* \geq 0,$$

and such that

$$(1.7) \quad b + u^* - Ax^* - C^t\lambda^* = 0 \quad \text{for } x^* \in X^0.$$

We can now write (1.3) and (1.4) as

$$(1.8) \quad b + u^* - Ax^* - C^t\lambda^* = 0 \quad \text{for all } x \geq 0.$$

It can be seen then that the vector  $u$  is a special kind of slack variable which permits the Kuhn-Tucker inequality (1.4), together with (1.3), to be written as an equality (1.8).

#### 1.6. Similarity Between These Equations and Linear Programming Equations

The similarity between the satisfaction of equations (1.5) and (1.8) and simplex method linear programming can be exploited if satisfaction of (1.6) can be ensured and some method of determination can be made of the efficient order in which to bring in new components of  $x$  (to take the place of the linear criterion function coefficients of linear programming). Dantzig has supplied such a selection criterion. A feasible, non-optimal solution, say  $x^0$  (which satisfies (1.5) but does not satisfy (1.3) or (1.4)), will be characterized by a  $u$  vector which contains negative components. The component of  $x^0$  corresponding to the most negative component of  $u^0$  is the activity to be introduced next into the basis ( $X^+$ ). Dantzig has shown that such a selection rule will lead to a monotonically increasing  $\pi(x)$ .

## 2. Setting Up the Solution Matrix

### 2.1. The Complete Form of the Solution Matrix

Figure 2.1 shows the solution matrix for the quadratic criterion function (1.1), subject to the explicit constraints. Note the requirement



of equations (1.6), (1.2), and (1.8) is implicit in the computer instructions to follow.

$b_1$	$b_2$	...	$b_m$		$d_1$	$d_2$	...	$d_n$	
$a_{11}$	$a_{12}$	...	$a_{1m}$		$c_{11}$	$c_{21}$	...	$c_{n1}$	$x_1$
$a_{21}$	$a_{22}$	...	$a_{2m}$		$c_{12}$	$c_{22}$	...	$c_{n2}$	$x_2$
$\vdots$	$\vdots$		$\vdots$		$\vdots$	$\vdots$		$\vdots$	$\vdots$
$a_{m1}$	$a_{m2}$	...	$a_{mm}$		$c_{1m}$	$c_{2m}$	...	$c_{nm}$	$x_m$
-1	0	...	0		0	0	...	0	$u_1$
0	-1	...	0		0	0	...	0	$u_2$
$\vdots$	$\vdots$		$\vdots$		$\vdots$	$\vdots$		$\vdots$	$\vdots$
0	0	...	-1		0	0	...	0	$u_m$
$c_{11}$	$c_{12}$	...	$c_{1m}$		0	0	...	0	$\lambda_1$
$c_{21}$	$c_{22}$	...	$c_{2m}$		0	0	...	0	$\lambda_2$
$\vdots$	$\vdots$		$\vdots$		$\vdots$	$\vdots$		$\vdots$	$\vdots$
$c_{n1}$	$c_{n2}$	...	$c_{nm}$		0	0	...	0	$\lambda_n$

Fig. 2.1.1

## 2.2. The Reduced Form of the Solution Matrix

We shall employ an abbreviated notation for the solution matrix, so that Fig.2.1.1 may be represented as

(2.1)

b	d	
A	C	x
-I	$\emptyset$	u
$C^t$	$\emptyset$	$\lambda$

One practical disadvantage of the simplex quadratic programming algorithm is the very large size of the solution matrix. With  $m$  activities and  $n$  constraints, the solution matrix is a  $(m+n) \times (2m+n)$  matrix, where  $m > n$ . This large matrix limits the application of the method to either the solution of small problems or the use of large computers.

We note that  $n$  of the  $m$  activities are slack activities, the rest being productive activities. We may partition the  $x$  vector as follows:

$$(2.2) \quad x = \langle x_p; x_s \rangle$$

where  $x_s$  contains the components of  $x$  which represent slack activities,  $x_p$  contains the components ( $m-n$  in number) of  $x$  which represent productive activities.

In the same way, we write

$$(2.3) \quad u = \langle u_p; u_s \rangle .$$

Furthermore, we will assume that the criterion function is restricted only to the productive activities; that is, the slack activities are not costly or productive. Thus, we have

$$(2.4) \quad b = \langle b_p; \emptyset \rangle ,$$

where  $b_p$  contains only the coefficients corresponding to the productive activities.

Also, we have

$$(2.5) \quad A = \left[ \begin{array}{c|c} A_p & \emptyset \\ \hline \emptyset & \emptyset \end{array} \right]$$

where  $A_p$  is the matrix whose elements are associated only with the productive activities, and

$$(2.6) \quad C = \left[ \begin{array}{c} C \\ \hline \emptyset \\ I \end{array} \right]$$

where  $C_p$  is the matrix associated with the productive activities, and

$I$  is the unit matrix associated with the slack activities.

The whole solution matrix of (2.1) may be rewritten as

$$(2.7) \quad \begin{array}{c|ccc|c} b_p & 0 & d & \\ \hline A_p & \phi & c_p & x_p \\ \hline \phi & \phi & I & x_s \\ \hline -I & \phi & \phi & u_p \\ \hline \phi & -I & \phi & u_s \\ \hline c_p^t & I & \phi & \lambda \\ \hline \end{array}$$

We note from the last two rows of (2.7) that  $u_s$  and  $\lambda$  are related in a very useful way. An increase in a component of  $u_s$  implies an equal increase in a corresponding component of  $\lambda$ , and vice versa. Thus, for any component in  $u_s$  and  $\lambda$ , we may write

$$(2.8) \quad u_j + \delta_j = \lambda_j + \delta_j, \quad j = 1, 2, \dots, n,$$

where  $\delta_j$  is some change to  $u_j$  or  $\lambda_j$ . For all practical purposes, any selection criterion based (in part) on  $u_s$  could be based also on  $\lambda$ . The solution matrix (2.7) may then be rewritten in a reduced form. We have

$$(2.9) \quad \begin{array}{c|cc|c} b_p & d & \\ \hline A_p & C_p & x_p \\ \hline \phi & I & x_s \\ \hline -I & \phi & u_p \\ \hline c_p^t & \phi & \lambda \\ \hline \end{array}$$

Where we have  $m$  activities and  $n$  constraints, the general solution matrix of dimension  $(m+n) \times (2m+n)$  may be reduced to a  $m \times 2m$  matrix. Such a

reduction leads to a marked saving in computer memory elements.

### 3. The Computer Program

#### 3.1. General Information

The computer program is written in Fortran language for the I.B.M. 1401 computer [4]. The 1401 computer is a medium-sized machine which is quite commonly found in use as an accounting machine in many thousands of business firms in the United States and abroad. Since quadratic programming is a valuable aid to profit analysis in business, we feel that this program will find many uses in these firms. Approximately 8,000 memory positions are required to store the program and the necessary fixed routine instructions for the computer. Thus, if 12,000 memory positions are available, sufficient memory positions remain to store a  $15 \times 30$  solution matrix with an accuracy of six significant figures (this includes space for the vectors  $x_p$ ,  $x_s$ ,  $u_p$ ,  $\lambda$ ,  $b_p$ , and  $d$ ). This solution capacity should be adequate for most business problems. One solution cycle requires approximately 30 seconds of machine time and, on the average, about 10 cycles are required to find an optimal solution. Thus, a solution may be obtained, on the average, in 5 minutes of computer time. No magnetic tape units are required, the problem being solved completely in the magnetic core storage areas.

#### 3.2. Description of the Block Diagram

It is necessary to make the computer Fortran program notation different from the descriptive notation used in the previous sections. The  $x$  vector,  $u$  vector, and  $\lambda$  vector are known to the computer as a single  $X$  vector. The assigned index numbers are the only clues to identification of the  $x$ ,  $u$ , and  $\lambda$  vectors within the  $X$  vector. Also, the

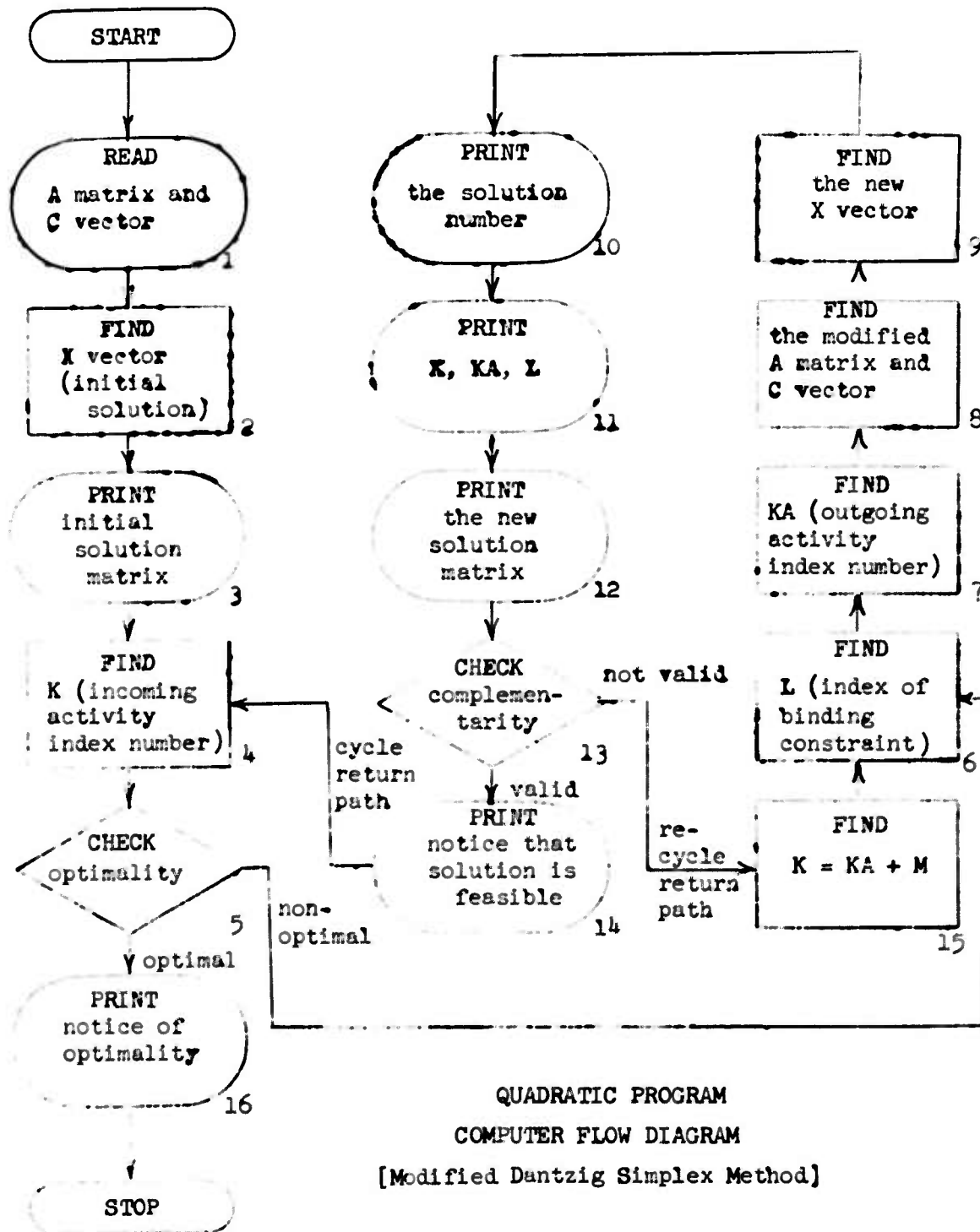


Fig. 3.2.1

c and d vectors are known to the computer as a single C vector, from which the c and d vectors may be identified only by the assigned index numbers. The solution matrix is known to the computer as the A matrix. The submatrices described in previous sections are only identified by the assigned index numbers.

With these definitions in mind, Fig. 3.2.1 may be examined. Figure 3.2.1 is a simplified block diagram of the modified Dantzig simplex method. Each block will be described in detail below.

#### Block 1

During this operation the computer accepts input information from cards and/or tape. This information is placed in the reserved memory positions and the assembly of the A matrix is completed. In addition, the C vector is also assembled in the appropriate memory locations.

#### Block 2

In Block 2, the A matrix and the C vector are used to determine the initial value of the X vector. This initial solution is formed by running the slack activities at a level which consumes all the available resources. Furthermore, the complementary productive activities are also introduced (since the productive activities are all at zero) so that the C vector is completely satisfied. This initial solution, although a feasible solution, is far from optimal since all the resources are "thrown away" by the slack activities.

#### Block 3

The printer now prints out the initial solution. First, the C vector is printed out. Then the A matrix and X vector (in the far right column) are printed out row after row, until the entire matrix and vector are

complete. This matrix may then be examined to assure that the data fed into the computer has been stored in the proper positions.

#### Block 4

If the value of this least-valued complementary activity is positive or zero, the optimality theorems indicate that the present solution is the optimal solution and the computer passes on to Block 17. However, this is rarely the case, especially on the first solution. Ordinarily, the least-valued complementary activity is negative. If it is negative, the computer passes on to Block 6.

#### Block 6

In Block 6, the  $K^{\text{th}}$  (most profitable) activity is increased from zero until the first of the C vector constraints coefficient becomes binding. Which constraint is the first to bind, is determined by dividing the K row of A matrix elements, one at a time, into the appropriate C vector coefficients. Note that only certain C vector coefficients (columns) are used during this process. These certain coefficients are in the columns associated with the activities which are restricted to zero or positive values only; that is, only the productive activities and the slack activities. Thus, only the C vector coefficient associated with a sign-restricted activity can possibly bind the incoming activity. The complementary activities and the Lagrangian multipliers are not sign-restricted for feasible solutions. One exception exists: The C vector coefficient associated with the complementary activity for the  $K^{\text{th}}$  activity is sign-restricted during this solution cycle. It may not be permitted to go negative at this time. This is because it is very desirable for the incoming activity,  $K(K)$ , to be bound by the C vector coefficient which

formerly bound its own complementary activity. The reasons behind this statement will become more apparent later in Block 13.

#### Block 7

Since the binding C vector constraint, L, formerly was the bound for some other activity that was formerly in the basis, this other activity must be identified and made to drop out of the new basis (go to zero) following the introduction of the  $K^{\text{th}}$  (most profitable) activity. This activity is found by finding the index number of the row with a 1. in column L, which also has a positive, non-zero X vector component. This index number is recorded as KA.

#### Block 8

Now that K, L, and KA are known, the A matrix and the C vector are modified according to the simplex rules. Following this operation, the  $K^{\text{th}}$  row will have 0. everywhere except in the  $L^{\text{th}}$  column where the number 1. will appear. The  $KA^{\text{th}}$  row, which formerly had 0.'s everywhere but the  $L^{\text{th}}$  column (where it had a 1.), will now generally contain coefficients of various values. Everywhere else the A matrix coefficients will be modified by the simplex process to recognize the existence of a new basis (containing the  $K^{\text{th}}$ , instead of the  $KA^{\text{th}}$ , activity).

#### Block 9

At this stage, the new X vector is assembled. The incoming activity,  $X(K)$ , will become positive and equal to the new  $C(K)$ , while the outgoing activity,  $X(KA)$ , will become 0. . Since the C vector has been modified, the other activity levels will change somewhat.

#### Block 10

The printer will print the sequence number of the new solution.



### Block 11

The printer will print the index numbers of the incoming and outgoing activities and the binding constraint.

### Block 12

The printer will now print the new C vector. Following this, the A matrix and X vector components will be printed out, row by row, until the entire solution has been printed.

### Block 13

The complementarity check is now made. The complementary activity of the incoming activity is checked to see if it is 0. . If it is, this can happen in the following way: Suppose that the binding C vector coefficient was the former binding coefficient for the complementary variable of the incoming activity. In this case, as the incoming activity comes in, its own complementary activity goes to 0. . Most of the time the complementary activity falls but does not go to zero (this is because some activity other than the complementary one is dropped). If the complementary activity associated with the incoming activity becomes zero, the complementarity test passes. If not, the test fails. The optimality theorems indicate that if the test passes, the solution is feasible. If the test fails, the solution is non-feasible.

If the complementarity test passes, the computer moves on to Block 14. If the test fails, the computer moves on to Block 15.

### Block 14

The computer enters this block only when the complementarity test passes. The printer will print out a notice that the solution (printed formerly in Block 12) is a feasible solution.

The computer now returns to Block 4 and determines the conditions for another solution.

#### Block 15

The computer enters this operation only when the complementarity test fails and the solution is non-feasible. According to the optimality theorems, the complementary activity associated with the binding C vector constraint coefficient must be brought into the basis. Therefore, K is set equal to the index of this activity and the computer attempts to pass the complementarity test again by going back to Block 6, with this new value of K.

#### Block 16

This block is entered only if the optimality test of Block 5 is passed. In this block the printer prints out a message indicating that the solution (printed last) is the optimum solution. Following this message the computer stops and the problem is solved.

### 3.3. The Fortran Statement of the Solution Algorithm

Appendix I is a reproduction of the Fortran statement list for the solution algorithm. The essential heart of the algorithm starts at statement sequence number 30. The operations preceding this point are the instructions required to read in the initial data and form the initial solution matrix. These instructions can sometimes be modified to suit the particular application of the algorithm as a component of a larger program. In this case, these statements have been made general enough to permit the program to be used for most applications.

### 3.4. The Layout of Input Data Cards.

In the assignment of coefficients to be punched in the input data cards, some arbitrary, but prescribed, index order of the constraints and activities is assumed. This index order, once set, is adhered to throughout the assignment.

#### 3.4.1. The Index Card

The index information is placed on one card with the following format:

<u>Card No.</u>	<u>Column No.'s</u>	<u>Coefficient</u>
1	1-2	NT (the number of productive activities)
1	3-4	MT (the number of constraints)

The following equations must be satisfied when selecting NT and MT:

$$1 \leq NT \leq 10$$

$$1 \leq MT \leq 10$$

$$2 \leq NT + MT \leq 15$$

#### 3.4.2. The C Vector Cards

The C vector is placed on two cards with the following format:

<u>Card No.</u>	<u>Column No.'s</u>	<u>Coefficient</u>
2	1-8	C(1)
2	9-16	C(2)
2	17-24	C(3)
2	25-32	C(4)
2	33-40	C(5)
2	41-48	C(6)
2	49-56	C(7)
2	57-64	C(8)

<u>Card No.</u>	<u>Column No.'s</u>	<u>Coefficient</u>
2	65-72	C(9)
2	73-80	C(10)
3	1-8	C(11)
3	9-16	C(12)
3	17-24	C(13)
3	25-32	C(14)
3	33-40	C(15)

All unused components of C are left blank.

### 3.4.3. The Quadratic Coefficient Cards

We have NT cards of the following format:

<u>Card No.</u>	<u>Column No.'s</u>	<u>Coefficient</u>
4	1-8	A(1,1)
4	9-16	A(1,2)
4	17-24	A(1,3)
4	25-32	A(1,4)
4	33-40	A(1,5)
4	41-48	A(1,6)
4	49-56	A(1,7)
4	57-64	A(1,8)
4	65-72	A(1,9)
4	73-80	A(1,10)

..... The above sequence is repeated for NT cards, the last of which is .....

3 + NT                      73-80                      A(NT,10)

All the unused A elements are left blank.

### 3.4.4. The Constraint Coefficient Cards

We have MT cards of the following format:

<u>Card No.</u>	<u>Column No.'s</u>	<u>Coefficient</u>
3 + NT + 1	1-8	C(1,1)
3 + NT + 1	9-16	C(2,1)
3 + NT + 1	17-24	C(3,1)

<u>Card No.</u>	<u>Column No.'s</u>	<u>Coefficient</u>
3 + NT + 1	25-32	C(4,1)
3 + NT + 1	33-40	C(5,1)
3 + NT + 1	41-48	C(6,1)
3 + NT + 1	49-56	C(7,1)
3 + NT + 1	57-64	C(8,1)
3 + NT + 1	65-72	C(9,1)
3 + NT + 1	73-80	C(10,1)

.....The above sequence is repeated for MT cards, the last of which is.....

3 + NT + MT	1-8	C(1,MT)
3 + NT + MT	9-16	C(2,MT)

..... and so on until .....

3 + NT + MT	73-80	C(10,MT)
-------------	-------	----------

All the unused elements of C are left blank.

#### 3.4.5. Special Instructions on Punching These Cards

The decimal point must always fall four digits from the end of the coefficient's field.

The decimal point is not punched in the card; the computer is programmed to provide it internally.

Minus signs can be punched before the first significant digit but under no circumstances can minus signs be placed outside the field occupied by the coefficient. Thus, negative coefficients can have only three significant figures before the decimal point.

In cases where the significant digits stop before the end of the field, zeros must be filled in until the remainder of the field is full of digits. No zeros are required before the first significant digit in order to fill the field.

#### Examples:

a) For the coefficient -436.23, punch

| - 4 3 6 . 2 3 0 0 |

b) For the coefficient 0.0025, punch

| . . . . . 2 5 |

c) For the coefficient 3261., punch

| 3 , 2 , 6 , 1 , |

d) For the coefficient 0., punch

| | | | | | | | | | |

### 3.4.6. Order of the Cards

The data cards are placed, in the order described above, behind the Fortran program deck and processed as a standard Fortran compilation/computation sequence with either the 1401 Fortran compilation deck or 1401 Fortran tape.

### 3.5. The Output Format

Appendix II shows a sequence of solution sheets to a typical example of a quadratic program used to maximize profits in a firm. The first sheet shows the initial data in the solution matrix and the initial X vector. The last sheet shows the feasible optimal solution and the final solution matrix.

By suitable modifications to the Fortran program, the feasible optimal solution may be placed on tape, to be used in further processing by another program (such as a bookkeeping routine). Thus, the quadratic program may be used as a "subroutine" for a more involved problem.

## 4. Summary

a) The optimal use of limited resources, where constant returns to scale cannot be assumed, is a major concern in the theory of the firm.

b) Quadratic programming is a practical answer to this problem.

- c) Medium-sized digital computers are available to a great many firms. By a modification of the Dantzig quadratic algorithm, these machines may be used to solve a great many of the optimization problems in business firms.
- d) This paper describes the modified Dantzig quadratic program.
- e) A Fortran digital computer program is included, with instructions for its use, and a practical example.

#### REFERENCES

- [1] Dantzig, G. B.. "Quadratic Programming: A Variant of the Wolfe-Markowitz Algorithms," Research Report No. 2, Operations Research Center, University of California, Berkeley, April 14, 1961.
- [2] Wolfe, P., "The Simplex Method for Quadratic Programming," Econometrica, Vol. 27, No. 3 (1959), 382-398.
- [3] Kuhn, H. W., and A. W. Tucker, "Nonlinear Programming," Proceedings of the Second Berkeley Symposium on Mathematical Statistics and Probability. Berkeley: University of California Press, 1951; 481-492.
- [4] "Fortran Specification for the IBM 1401." 1401 Data Processing System Bulletin J24-1455-1, International Business Machines Corporation, White Plains, New York, 1961.

Appendix I

```
PARAMI9R0206PS
  READ 5, NT, MT
  JB=NT+1
  M=NT+MT
  N=M+M
  DIMENSION A(30,15),C(15),X(30)
  PRINT 8
  DO 3 I=1,30
  X(I)=0.
  DO 2 J=1,15
  2 A(I,J)=0.
  3 CONTINUE
  READ 6,(C(J),J=1,10)
  READ 7,(C(J),J=11,15)
  DO 5 I=1,NT
  5 READ 6,(A(I,J),J=1,10)
  DO 60 J=JB,M
  READ 6,(A(I,J),I=1,10)
  X(J)=C(J)
  MR=J+M
  DO 50 I=1,NT
  50 A(MR,I)=A(I,J)
  60 CONTINUE
  DO 70 J=1,NT
  I=M+J
  X(I)=-C(J)
  70 A(I,J)=-1.
  PRINT 600,(C(I),I=1,15)
  DO 200 I=1,N
  200 PRINT 615,(A(I,J),J=1,15),X(I)
C   FIND INCOMING ACTIVITY, K
  JB=0
```



```

MR=M+1
105 E=0.
    K=0
    DO 120 I=MR,N
    IF(E-X(I)) 120,120,110
110 E=X(I)
    K=I-M
120 CONTINUE
    JA=M+K
C    OPTIMALITY CHECK
    IF(X(JA)) 205,700,700
C    FIND BINDING CONSTRAINT, L
205 L=0
    E=999999.
    DO 230 J=1,M
    IF(A(JA,J)*C(J)) 219,204,219
204 IF(X(J)) 219,230,219
219 IF(A(K,J)) 212,230,209
212 IF(C(J)) 210,230,230
209 IF(C(J)) 230,230,210
210 D=C(J)/A(K,J)
    IF(E-D) 230,230,220
220 E=D
    L=J
230 CONTINUE
    IF(L) 235,235,240
C    FIND DROPPING ACTIVITY
240 DO 243 I=1,N
    IF(X(I)) 241,243,241
241 IF(A(I,L)) 242,243,242
242 KA=I
243 CONTINUE

```

```

C      MODIFY A MATRIX AND SOLVE FOR NEW CONSTRAINTS, C(J)
      E=A(K,L)
      DO 300 I=1,N
300    A(I,L)=A(I,L)/E
      C(L)=C(L)/E
      DO 320 J=1,M
      IF(J-L) 310,320,310
310    D=A(K,J)
      C(J)=C(J)-D*C(L)
      DO 315 I=1,N
315    A(I,J)=A(I,J)-D*A(I,L)
320    CONTINUE
      JB=JB+1
      PRINT 630,JB,K,KA,L
      PRINT 600,(C(I),I=1,15)
C      SOLVE FOR NEW ACTIVITY LEVELS
      X(K)=C(L)
      X(KA)=0.
      DO 400 I=1,N
      IF(X(I)) 330,400,330
330    E=0.
      DO 340 J=1,M
340    E=E+C(J)*A(I,J)
      X(I)=E
400    PRINT 615,(A(I,J),J=1,15),X(I)
C      COMPLEMENTARITY CHECK
      IF(X(JA)) 510,595,595
510    K=KA+M
      GO TO 205
595    PRINT 640
      GO TO 105
700    PRINT 710

```

```
STOP 222
235 STOP 888
5 FORMAT (2I2)
6 FORMAT (10F8.4)
7 FORMAT (5F8.4)
8 FORMAT (32H1WOLFE SIMPLEX QUADRATIC PROGRAM,/)
600 FORMAT (1X,15F8.4,/)
615 FORMAT (1X,16F8.4)
630 FORMAT (12H1IN SOLUTION,14, 9H,ACTIVITY,14,6HIS IN,,14,21HDROPS, AN
1D CONSTRAINT,14,6HBINDS.)
640 FORMAT (28H0THIS IS A FEASIBLE SOLUTION)
710 FORMAT (21H AND OPTIMAL SOLUTION)
END
```

Appendix II

WOLFE SIMPLEX QUADRATIC PROGRAM

0.0500	0.0380	0.0100	0.0400	-0.3000	-0.2000	-0.0450	2.3490	4.4660	52.7370	0.	0.	0.	0.	0.	0.	0.	0.	0.	0.	0.
0.0011	0.	0.	0.	0.	0.	0.	0.0490	0.0810	1.0320	0.	0.	0.	0.	0.	0.	0.	0.	0.	0.	0.
0.	0.0015	0.	0.	0.	0.	0.	0.0520	0.1340	0.3920	0.	0.	0.	0.	0.	0.	0.	0.	0.	0.	0.
0.	0.	0.0010	0.	0.	0.	0.	0.0740	0.1100	0.1900	0.	0.	0.	0.	0.	0.	0.	0.	0.	0.	0.
0.	0.	0.	0.0500	0.	0.	0.	0.0480	0.1240	0.2980	0.	0.	0.	0.	0.	0.	0.	0.	0.	0.	0.
0.	0.	0.	0.	0.	0.	0.	-1.0000	0.	0.	0.	0.	0.	0.	0.	0.	0.	0.	0.	0.	0.
0.	0.	0.	0.	0.	0.	0.	0.	-1.0000	0.	0.	0.	0.	0.	0.	0.	0.	0.	0.	0.	0.
0.	0.	0.	0.	0.	0.	0.	1.0000	0.	0.	0.	0.	0.	0.	0.	0.	0.	0.	0.	0.	0.
0.	0.	0.	0.	0.	0.	0.	0.	1.0000	0.	0.	0.	0.	0.	0.	0.	0.	0.	0.	0.	0.
0.	0.	0.	0.	0.	0.	0.	0.	0.	1.0000	0.	0.	0.	0.	0.	0.	0.	0.	0.	0.	0.
0.	0.	0.	0.	0.	0.	0.	0.	0.	0.	0.	0.	0.	0.	0.	0.	0.	0.	0.	0.	0.
-1.0000	0.	0.	0.	0.	0.	0.	0.	0.	0.	0.	0.	0.	0.	0.	0.	0.	0.	0.	0.	0.
0.	-1.0000	0.	-1.0000	0.	0.	0.	0.	0.	0.	0.	0.	0.	0.	0.	0.	0.	0.	0.	0.	0.
0.	0.	0.	0.	0.	0.	0.	0.	0.	0.	0.	0.	0.	0.	0.	0.	0.	0.	0.	0.	0.
0.	0.	0.	0.	0.	0.	0.	0.	0.	0.	0.	0.	0.	0.	0.	0.	0.	0.	0.	0.	0.
0.	0.	0.	0.	0.	0.	0.	0.	0.	0.	0.	0.	0.	0.	0.	0.	0.	0.	0.	0.	0.
0.	0.	0.	0.	0.	0.	0.	0.	0.	0.	0.	0.	0.	0.	0.	0.	0.	0.	0.	0.	0.
0.0490	0.0520	0.0740	0.0480	-1.0000	0.	0.	0.	0.	0.	0.	0.	0.	0.	0.	0.	0.	0.	0.	0.	0.
0.0810	0.1340	0.1100	0.1240	0.	-1.0000	0.	0.	0.	0.	0.	0.	0.	0.	0.	0.	0.	0.	0.	0.	0.
1.0320	0.3920	0.1900	0.2980	0.	0.	-1.0000	0.	0.	0.	0.	0.	0.	0.	0.	0.	0.	0.	0.	0.	0.

IN SOLUTION 1, ACTIVITY 115 IV, 204DPS, AND CONSTRAINT 484DPS.

0.0051	0.0380	0.0100	0.0400	-0.3000	-0.2000	-0.0450	48.9592	0.4933	2.2111	0.	0.	0.	0.	0.	0.	0.	0.	0.	0.	0.
0.	0.0015	0.	0.	0.	0.	0.	1.0000	0.	0.	0.	0.	0.	0.	0.	0.	0.	0.	0.	0.	0.
0.	0.0017	0.	0.	0.	0.	0.	1.0612	0.0490	-0.7032	0.	0.	0.	0.	0.	0.	0.	0.	0.	0.	0.
0.	0.0011	0.	0.	0.0050	0.	0.	1.5102	-0.0123	-1.3595	0.	0.	0.	0.	0.	0.	0.	0.	0.	0.	0.
0.	0.0224	0.	0.	0.	0.	0.	0.9746	0.0447	-0.7129	0.	0.	0.	0.	0.	0.	0.	0.	0.	0.	0.
0.	0.	0.	0.	0.	0.	0.	-20.4082	1.6531	21.0613	0.	0.	0.	0.	0.	0.	0.	0.	0.	0.	0.
0.	0.	0.	0.	0.	0.	0.	0.	-1.0000	0.	0.	0.	0.	0.	0.	0.	0.	0.	0.	0.	0.
0.	0.	0.	0.	0.	0.	0.	20.4082	-1.6531	-21.0613	0.	0.	0.	0.	0.	0.	0.	0.	0.	0.	0.
0.	0.	0.	0.	0.	0.	0.	0.	1.0000	0.	0.	0.	0.	0.	0.	0.	0.	0.	0.	0.	0.
-1.0000	0.	0.	0.	0.	0.	0.	0.	0.	1.0000	0.	0.	0.	0.	0.	0.	0.	0.	0.	0.	0.
0.	0.	0.	0.	0.	0.	0.	0.	0.	0.	0.	0.	0.	0.	0.	0.	0.	0.	0.	0.	0.
0.	0.	0.	0.	0.	0.	0.	0.	0.	0.	0.	0.	0.	0.	0.	0.	0.	0.	0.	0.	0.
0.	0.	0.	0.	0.	0.	0.	0.	0.	0.	0.	0.	0.	0.	0.	0.	0.	0.	0.	0.	0.
0.	0.	0.	0.	0.	0.	0.	0.	0.	0.	0.	0.	0.	0.	0.	0.	0.	0.	0.	0.	0.
0.0490	0.0520	0.0740	0.0480	-1.0000	0.	0.	0.	0.	0.	0.	0.	0.	0.	0.	0.	0.	0.	0.	0.	0.
0.0810	0.1340	0.1100	0.1240	0.	-1.0000	0.	0.	0.	0.	0.	0.	0.	0.	0.	0.	0.	0.	0.	0.	0.
1.0320	0.3920	0.1900	0.2980	0.	0.	-1.0000	0.	0.	0.	0.	0.	0.	0.	0.	0.	0.	0.	0.	0.	0.

IV SOLUTION										1815 IV, 110R3P5, AND CONSTRAINT 131M05.									
	2.ACTIVITY																		
3.1254	3.3315	0.0097	3.3340	-3.1746	-3.2300	-3.0450	48.9532	3.4933	2.2111	3.	0.	3.	3.	3.	0.	0.	0.	0.	3.
3.	3.	0.	0.	3.	3.	3.	1.3000	0.	3.	3.	3.	3.	3.	3.	3.	3.	3.	3.	3.
-3.3238	3.0027	0.0018	3.3011	-3.3238	3.	3.	1.3612	0.	3.4533	-3.7032	3.	3.	3.	3.	3.	3.	3.	3.	3.
-3.3339	3.0016	0.0035	3.0016	-3.3339	3.	3.	1.5132	-3.3123	-1.3595	3.	3.	3.	3.	3.	3.	3.	3.	3.	3.
-3.3220	3.0011	3.0016	3.0061	-3.3220	3.	3.	0.9796	3.0447	-3.7129	3.	3.	3.	3.	3.	3.	3.	3.	3.	3.
3.4581	-3.0238	-0.0339	-3.3220	3.4581	3.	3.	-23.4082	1.6531	21.3613	3.	3.	3.	3.	3.	3.	3.	3.	3.	3.
3.	3.	0.	3.	3.	3.	3.	3.	-1.3000	3.	3.	3.	3.	3.	3.	3.	3.	3.	3.	3.
3.	3.	0.	3.	3.	3.	3.	3.	3.	-1.0000	3.	3.	3.	3.	3.	3.	3.	3.	3.	3.
-3.4531	3.0238	3.0339	3.3220	-3.4531	3.	3.	23.4082	-1.6531	-21.3613	3.	3.	3.	3.	3.	3.	3.	3.	3.	3.
3.	3.	0.	3.	3.	3.	3.	3.	1.0000	3.	3.	3.	3.	3.	3.	3.	3.	3.	3.	3.
-23.4082	1.0612	1.5102	3.9796	-23.4082	3.	3.	3.	3.	1.3000	3.	3.	3.	3.	3.	3.	3.	3.	3.	3.
3.	3.	-1.0000	3.	3.	3.	3.	3.	3.	3.	3.	3.	3.	3.	3.	3.	3.	3.	3.	3.
3.	3.	0.	3.	3.	3.	3.	3.	3.	3.	3.	3.	3.	3.	3.	3.	3.	3.	3.	3.
3.	3.	0.	3.	3.	3.	3.	3.	3.	3.	3.	3.	3.	3.	3.	3.	3.	3.	3.	3.
3.	3.	0.	3.	3.	3.	3.	3.	3.	3.	3.	3.	3.	3.	3.	3.	3.	3.	3.	3.
3.	3.	0.	3.	3.	3.	3.	3.	3.	3.	3.	3.	3.	3.	3.	3.	3.	3.	3.	3.
1.0000	3.	3.	3.	3.	3.	3.	3.	3.	3.	3.	3.	3.	3.	3.	3.	3.	3.	3.	3.
1.5531	3.0480	-0.0123	3.3447	1.5531	-1.3000	3.	3.	3.	3.	3.	3.	3.	3.	3.	3.	3.	3.	3.	3.
21.3512	-3.7032	-1.3595	-3.7129	21.3512	3.	3.	-1.0000	3.	3.	3.	3.	3.	3.	3.	3.	3.	3.	3.	3.

THIS IS A FEASIBLE SOLUTION

IV SOLUTION										415 IV, 140R3P5, AND CONSTRAINT 431M05.									
	3.ACTIVITY																		
3.2499	3.0251	-3.0084	3.5115	-3.3512	-3.2000	-0.3450	43.4623	0.2477	5.2117	3.	3.	3.	3.	3.	3.	3.	3.	3.	3.
3.	3.	0.	3.	3.	3.	3.	1.3000	3.	3.	3.	3.	3.	3.	3.	3.	3.	3.	3.	3.
-3.3137	3.0025	0.0015	3.1888	-3.3137	3.	3.	3.	3.	3.	3.	3.	3.	3.	3.	3.	3.	3.	3.	3.
-3.3290	3.0015	3.0031	3.2687	-3.3280	3.	3.	1.2470	-0.0243	-1.1679	3.	3.	3.	3.	3.	3.	3.	3.	3.	3.
3.	3.	0.	3.	3.	3.	3.	3.	3.	3.	3.	3.	3.	3.	3.	3.	3.	3.	3.	3.
3.3733	-3.0137	-0.3280	-3.5315	3.3733	3.	3.	-16.8509	1.8132	15.4722	3.	3.	3.	3.	3.	3.	3.	3.	3.	3.
3.	3.	0.	3.	3.	3.	3.	3.	-1.0000	3.	3.	3.	3.	3.	3.	3.	3.	3.	3.	3.
-3.3733	3.0137	3.3290	3.5315	-3.3733	3.	3.	15.8958	-1.8152	-15.4722	3.	3.	3.	3.	3.	3.	3.	3.	3.	3.
3.	3.	0.	3.	3.	3.	3.	3.	1.0000	3.	3.	3.	3.	3.	3.	3.	3.	3.	3.	3.
-15.8958	3.8752	1.2470	3.1888	-15.8958	3.	3.	158.4670	-7.2234	115.3310	3.	3.	3.	3.	3.	3.	3.	3.	3.	3.
3.	-1.0000	3.	3.	3.	3.	3.	3.	3.	3.	3.	3.	3.	3.	3.	3.	3.	3.	3.	3.
3.	3.	3.	3.	3.	3.	3.	3.	3.	3.	3.	3.	3.	3.	3.	3.	3.	3.	3.	3.
-3.5315	3.1898	3.2687	3.5315	-3.5315	3.	3.	161.7670	7.3733	117.7330	3.	3.	3.	3.	3.	3.	3.	3.	3.	3.
3.	3.	0.	3.	3.	3.	3.	3.	3.	3.	3.	3.	3.	3.	3.	3.	3.	3.	3.	3.
3.	3.	0.	3.	3.	3.	3.	3.	3.	3.	3.	3.	3.	3.	3.	3.	3.	3.	3.	3.
1.3000	3.	3.	3.	3.	3.	3.	3.	3.	3.	3.	3.	3.	3.	3.	3.	3.	3.	3.	3.
1.8152	3.0326	-3.3243	7.3733	1.8152	-1.3000	3.	-7.2234	-3.3243	5.2571	3.	3.	3.	3.	3.	3.	3.	3.	3.	3.
13.4722	-3.5688	-1.1679	117.7330	13.4722	3.	3.	-1.3000	115.3310	5.2571	-3.3164	3.	3.	3.	3.	3.	3.	3.	3.	3.

THIS IS A FEASIBLE SOLUTION

IN SOLUTION	4-ACTIVITY	215 1V,	9ORDPS,	AVG	CONSTRAINT	9BINDS.															
0.3718	0.0093	-0.0175	4.4304	0.0718	-0.2000	-0.0450	37.7818	5.2545	7.7677	0.	0.	0.	0.	0.	0.	0.	0.	0.	0.	0.	0.
0.	0.	0.	0.	0.	0.	0.	1.0000	0.	0.	0.	0.	0.	0.	0.	0.	0.	0.	0.	0.	0.	0.
0.	0.	0.	0.	0.	0.	0.	0.	1.0000	0.	0.	0.	0.	0.	0.	0.	0.	0.	0.	0.	0.	0.
-0.0401	0.0030	0.0040	0.3847	-0.0401	0.	0.	0.	1.0000	0.	0.	0.	0.	0.	0.	0.	0.	0.	0.	0.	0.	0.
0.	0.	0.	1.0000	0.	0.	0.	0.	0.	1.7851	-0.6142	-1.5171	0.	0.	0.	0.	0.	0.	0.	0.	0.	0.
1.2795	-0.1353	-0.0947	-12.2857	1.2798	0.	0.	-57.0074	45.8285	44.5279	0.	0.	0.	0.	0.	0.	0.	0.	0.	0.	0.	0.
-0.6955	0.0637	0.0367	4.7676	-0.4956	0.	0.	22.1222	-25.2458	-14.3540	0.	0.	0.	0.	0.	0.	0.	0.	0.	0.	0.	0.
-1.2795	0.1353	0.0947	12.2857	-1.2798	0.	0.	57.0074	-45.8285	-44.5279	0.	0.	0.	0.	0.	0.	0.	0.	0.	0.	0.	0.
0.6955	-0.0637	-0.0367	-4.7676	0.4956	0.	0.	-22.1222	25.2458	14.3540	0.	0.	0.	0.	0.	0.	0.	0.	0.	0.	0.	0.
0.	0.	0.	0.	0.	0.	0.	0.	1.33182	-3690	11.6453	0.	0.	0.	0.	0.	0.	0.	0.	0.	0.	0.
-0.4261	1.0000	1.5124	196.2050	-20.4381	0.	0.	0.	0.	0.	0.	0.	0.	0.	0.	0.	0.	0.	0.	0.	0.	0.
0.	0.	0.	-1.0000	0.	0.	0.	0.	0.	0.	0.	0.	0.	0.	0.	0.	0.	0.	0.	0.	0.	0.
0.0305	-0.2808	-0.0232	0.2720	0.0305	0.	0.	-1.352186	-1670	-11.8879	0.	0.	0.	0.	0.	0.	0.	0.	0.	0.	0.	0.
0.	0.	0.	0.	-1.0000	0.	0.	0.	0.	0.	0.	0.	0.	0.	0.	0.	0.	0.	0.	0.	0.	0.
0.	0.	0.	0.	0.	-1.0000	0.	0.	0.	0.	0.	0.	0.	0.	0.	0.	0.	0.	0.	0.	0.	0.
1.0000	0.	0.	0.	0.	0.	0.	-1.0000	0.	0.	0.	0.	0.	0.	0.	0.	0.	0.	0.	0.	0.	0.
1.5517	0.0506	-0.0122	8.9637	1.5517	-1.0000	0.	0.0607	-8.3129	0.5308	0.	0.	0.	0.	0.	0.	0.	0.	0.	0.	0.	0.
11.0000	-0.0034	-1.3011	42.7470	21.0000	0.	0.	-1.0000	-0.9571	11.7250	-8.4752	0.	0.	0.	0.	0.	0.	0.	0.	0.	0.	0.

IN SOLUTION	5-ACTIVITY	1915 1V,	12ORDPS,	AVG	CONSTRAINT	28140S.															
0.1189	0.1532	-0.0155	3.0594	-0.1813	-0.0458	-0.0450	37.7775	7.5233	3.5654	0.	0.	0.	0.	0.	0.	0.	0.	0.	0.	0.	0.
0.	0.	0.	0.	0.	0.	0.	1.0000	0.	0.	0.	0.	0.	0.	0.	0.	0.	0.	0.	0.	0.	0.
-0.1220	0.0495	0.0045	-0.0584	-0.1220	0.0495	0.	0.	1.0000	0.	0.	0.	0.	0.	0.	0.	0.	0.	0.	0.	0.	0.
4.3683	-2.2332	-0.1220	7.5874	4.3683	-2.2332	0.	1.7821	-0.2703	-1.5434	0.	0.	0.	0.	0.	0.	0.	0.	0.	0.	0.	0.
-2.2332	1.0514	0.0495	-4.5358	-2.2332	1.0514	0.	-55.8719	27.2641	45.7134	0.	0.	0.	0.	0.	0.	0.	0.	0.	0.	0.	0.
-4.3683	2.2332	0.1220	-7.5874	-4.3683	2.2332	0.	22.0584	-16.5037	-14.3121	0.	0.	0.	0.	0.	0.	0.	0.	0.	0.	0.	0.
2.2332	-1.0514	-0.0495	4.5358	2.2332	-1.0514	0.	55.8719	-27.2641	-45.7134	0.	0.	0.	0.	0.	0.	0.	0.	0.	0.	0.	0.
-55.8725	27.0587	1.7321	-1.0804	-55.8725	22.0587	0.	-22.0584	15.5057	14.3121	0.	0.	0.	0.	0.	0.	0.	0.	0.	0.	0.	0.
27.0543	-15.5058	-0.2018	147.5320	27.0543	-15.5058	0.	-0.0072	1.0000	-0.0642	0.	0.	0.	0.	0.	0.	0.	0.	0.	0.	0.	0.
7.5474	-4.5357	-0.0281	198.3310	7.5474	-4.5357	0.	1.001517	-2200	3.7523	0.	0.	0.	0.	0.	0.	0.	0.	0.	0.	0.	0.
0.	0.	0.	0.	0.	-1.0000	0.	0.	0.	0.	0.	0.	0.	0.	0.	0.	0.	0.	0.	0.	0.	0.
0.	0.	0.	0.	0.	0.	-1.0000	0.	0.	0.	0.	0.	0.	0.	0.	0.	0.	0.	0.	0.	0.	0.
1.0000	0.	0.	0.	0.	0.	-1.0000	0.	0.	0.	0.	0.	0.	0.	0.	0.	0.	0.	0.	0.	0.	0.
45.7135	-14.9123	-1.5435	-9.4259	45.7135	-14.9123	-1.0000	-1.077147	-9300	-9.4271	0.	0.	0.	0.	0.	0.	0.	0.	0.	0.	0.	0.

THIS IS A FEASIBLE SOLUTION  
AND OPTIMAL SOLUTION

STANFORD UNIVERSITY  
 TECHNICAL REPORT DISTRIBUTION LIST  
 CONTRACT Nonr-225(50)  
 (NR 047-004)

Office of Naval Research Branch Office 506 Broadway New York 13, N. Y.	1	Director, Operations Evaluation Group Office of Chief of Naval Operations (OP-05EG) Navy Department Washington 25, D. C.	2	Dr. Richard Bellman The RAND Corporation 1700 Main Street Santa Monica, California	1
Office of Naval Research Branch Office 1043 E. Green Street Pasadena 4, California	1	Headquarters, Oklahoma City Air Materiel Area United States Air Force Tinker Air Force Base, Oklahoma	1	Professor Max R. Bloom College of Business Administration Syracuse University Syracuse 10, New York	1
Office of Naval Research Branch Office 1000 Geary Street San Francisco 9, California	1	Industrial College of the Armed Forces Fort Lesley J. McNair Washington 25, D. C. Attn: Mr. L. L. Henkel	1	Dean L. M. K. Boelter School of Engineering University of California Los Angeles 24, California	1
Office of Naval Research Navy No. 100 Fleet Post Office New York, New York	2	Institute for Defense Analysis Communications Research Division Von Neumann Hall Princeton, New Jersey	1	Professor James N. Bulee University of California Agricultural Experiment Station Berkeley 4, California	1
Office of Naval Research Legistics Branch, Code 43C Bgt. of the Navy 75-Bldg. Washington 25, D. C.	10	Library American Power Jet Company 705 Grand Avenue Bridgefield, New Jersey	1	Professor O. H. Brownlee Department of Economics University of Minnesota Minneapolis 14, Minnesota	1
Headquarters, USAF Attn: AFAC - 6F Washington 25, D. C.	1	Commanding Officer, Office of Naval Research Branch Office 28 E. Randolph Street Chicago 1, Illinois	1	Professor S. S. Cairns Head, Dept. of Mathematics University of Illinois Urbana, Illinois	1
Legistics Research Project The George Washington University 707-22nd Street, N. W. Washington 7, D. C.	1	Superintendent, U. S. Naval Postgraduate School Attn: Library Monterey, California	1	Mr. Samuel L. Carroll 7022 Tealton Drive Dallas, Texas	1
Operations Research Office The Johns Hopkins University 6955 Arlington Road Bethesda 14, Maryland	1	Electronic Computer Division Code 260 Bureau of Ships Department of the Navy Washington 25, D. C.	2	Professor A. Charnes The Technological Institute Northwestern University Evanston, Illinois	1
United States Air Force Air University Library Maxwell Air Force Base, Alabama	1	The RAND Corporation 1700 Main Street Santa Monica, California	1	Professor John S. Chigman Department of Economics University of Minnesota Minneapolis 14, Minnesota	1
U. S. Naval Supply Research and Development Facility Naval Supply Depot Layton, New Jersey	1	Management Controls, Ref. Library Reston Bldg. Div. of Sperry Rand Corporation 515 Fourth Avenue New York 10, New York	1	Professor Carl Christ Department of Political Economy The Johns Hopkins University Baltimore 18, Maryland	1
Weapons Systems Evaluation Group Pentagon Bldg. Washington 25, D. C.	1	University of Washington Inst. for Economic Research Seattle 5, Washington	1	Professor Randolph Church U. S. Naval Postgraduate School Monterey, California	1
Aero Aeronautical Laboratory Moffett Field, California Attn: Technical Library	1	University of California Bureau of Business and Economic Research Berkeley 4, California	1	Professor C. W. Churchman School of Business Administration University of California Berkeley 4, California	1
Armed Services Technical Information Agency Arlington Hall Station Arlington 12, Virginia	10	Mr. Alan Abruzzi Applied Statistics Group Department of Management Stevens Institute of Technology Hoboken, New Jersey	1	Professor W. W. Cooper Director of Research Department of Economics Carnegie Institute of Technology Pittsburgh 15, Pennsylvania	1
The Director Naval Research Laboratory Washington 25, D. C. Attn: Tech. Information Office	1	Dr. S. G. Allen Stanford Research Institute Menlo Park, California	1	Mr. Martin David Treasury Department Washington 25, D. C.	1
Chief, Bureau of Supplies and Accounts Advanced Logistics Research Division (Code M) Department of the Navy Washington 25, D. C.	1	Professor Island Inch Department of Economics Carnegie Institute of Technology Pittsburgh 15, Pennsylvania	1	Professor Gerald Debreu Department of Economics University of California Berkeley 4, California	1
Naval War College Legistics Dept., Luce Hall Newport, Rhode Island	1	Professor D. V. T. Hear Department of Economics University of Chicago Chicago 57, Illinois	1	Professor Robert Dorfman Department of Economics Harvard University Cambridge 38, Massachusetts	1
Director, National Security Agency Attn: CS61 (Pa. 20087) Fort George G. Meade, Maryland	1	Professor E. F. Beckenbach Department of Mathematics University of California Los Angeles 24, California	1	Mr. Louis Duroa Management Engineering Staff Bureau of Yards and Docks Department of the Navy Washington 25, D. C.	1
Director, National Science Foundation Washington 25, D. C.	1	Dr. Martin J. Heckmann Department of Economics Brown University Providence, Rhode Island	1	Rear Adm. H. E. Eccles, USN, Ret. 101 Washington Street Newport, Rhode Island	1
NACA Office for Aeronautics 1724 P. Street, N. W. Washington 25, D. C. Attn: Chief, Office of Aeronautical Engineering	1			Mr. Daniel Ellsberg The RAND Corporation 1700 Main Street Santa Monica, California	1
Bureau of Supplies and Accounts, Code OM Department of the Navy Washington 25, D. C.	1			Alain Enthoven 3009 Holly Street Alexandria, Virginia	1

Contract Nonr-225(50)  
 May 1962

Professor Eberhard Fels 445 CL University of Pittsburgh Pittsburgh 13, Pennsylvania	1	Professor H. S. Mouthakker Department of Economics Harvard University Cambridge 38, Massachusetts	1	Mr. Harry M. Markovitz Logistics Department The RAND Corporation 1700 Main Street Santa Monica, California	1
Dr. Merrill M. Flood Mental Health Research Institute 205 North Forest Avenue Ann Arbor, Michigan	1	Dr. H. M. Hughes Department of Biometrics School of Aviation Medicine U. S. A. F. Randolph Field, Texas	1	Professor Jacob Marschak School of Business Administration University of California Los Angeles 24, California	1
Professor David Gale Department of Mathematics Brown University Providence, Rhode Island	1	Professor Leonid Hurvitz Department of Economics University of Minnesota Minneapolis 14, Minnesota	1	Thomas Marschak School of Business Administration University of California Berkeley 4, California	1
Mr. Murray Gelsler The RAND Corporation 1700 Main Street Santa Monica, California	1	Professor J. R. Jackson Management Science Research Project University of California Los Angeles 24, California	1	Professor Lionel M. McKeezie Department of Economics University of Rochester River Campus Station Rochester 20, New York	1
Professor M. Gelbaum Department of Mathematics University of Minnesota Minneapolis 14, Minnesota	1	Professor Dale W. Jorgenson Department of Economics University of California Berkeley 4, California	1	Mr. Joseph Mehr Head, Operations Research Desk U. S. N. Training Device Center Port Washington, L. I., New York	1
Giannini Foundation Ground-Water Studies Giannini Foundation of Agri. Economics University of California Berkeley 4, California	1	Johns Hopkins University Library Acquisitions Department Baltimore 18, Maryland	1	Dr. Richard A. Miller 4071 West 7th Street Fort Worth 7, Texas	1
Mr. A. J. D. Gillica Marketing Research Department Olin Mathieson Chemical Corp. 275 Winchester Avenue New Haven 4, Connecticut	1	Capt. Walter M. Keen, USN Office of Naval Research Code 400 Department of the Navy Washington 25, D. C.	1	Professor Franco Modigliani Grad. School of Industrial Administration Carnegie Institute of Technology Pittsburgh 13, Pennsylvania	1
Dr. R. E. Gomory IBM Research Yorktown Heights, New York	1	Professor Lawrence Klein Department of Economics University of Pennsylvania Philadelphia, Pennsylvania	1	Professor James Moore Dept. of Industrial Engineering Northeastern University Boston 12, Massachusetts	1
Professor Ivi Griliches Department of Economics University of Chicago Chicago 97, Illinois	1	Professor T. C. Koopmans Cowles Foundation for Research in Economics Yale Station, Box 2125 New Haven, Connecticut	1	Professor O. Morgenstern Econometric Research Program Princeton University 52-A Nassau Street Princeton, New Jersey	1
Dr. Theodore Heller Navy Management Office Washington 25, D. C.	1	Professor Harold W. Kohn Department of Mathematics Bryn Mawr College Bryn Mawr, Pennsylvania	1	D. E. Noonan Chief, Industrial Engineering Division Comptroller Hq. Ft. San Bernardino Air Material Area Norton Air Force Base, California	1
Dr. Theodore E. Harris The RAND Corporation 1700 Main Street Santa Monica, California	1	Dr. Edward LITTLE The RAND Corporation 1700 Main Street Santa Monica, California	1	Mr. M. L. Horden Research Division College of Engineering New York University New York 53, New York	1
Professor C. Lowell Harris Department of Economics Columbia University New York 27, New York	1	Professor C. K. Lenke Department of Mathematics Rensselaer Polytechnical Institute Troy, New York	1	Professor R. S. O'Neill Department of Engineering University of California Los Angeles 24, California	1
Dr. John C. Harsanyi Department of Economics Wayne State University Detroit, Michigan	1	Professor W. W. Leontief Department of Economics Harvard University Cambridge 38, Massachusetts	1	Mr. Richard V. Palermo Operations Research Department Willow Run Laboratories Ypsilanti, Michigan	1
Professor M. B. Hestenes Department of Mathematics University of California Los Angeles 24, California	1	Dr. Bernhard Lieberman Center for International Affairs 6 Divinity Avenue Harvard University Cambridge 38, Massachusetts	1	Professor Donald Patinkin Department of Economics University of California Berkeley 4, California	1
Professor C. Hildreth 9-A Wells Hall, J. A. S. A. Michigan State University East Lansing, Michigan	1	Professor S. B. Littauer Dept. of Industrial Engineering Columbia University New York 27, New York	1	Professor M. Riley 501 Stephens Memorial Hall University of California Berkeley 4, California	1
Mr. C. J. Hitch The RAND Corporation 1700 Main Street Santa Monica, California	1	John T. Lu, Senior Economist CEIR, Inc. Los Angeles Center 9171 Wilshire Blvd. Beverly Hills, California	1	Professor D. Rosenblatt Department of Statistics The George Washington University Washington 7, D. C.	1
Dr. Alan J. Hoffman IBM Research Center Box 210 Yorktown Heights, New York	1	Dr. R. Duncan Luce Department of Psychology University of Pennsylvania Philadelphia, Pennsylvania	1	Professor Murray Rosenblatt Department of Mathematics Brown University Providence 12, Rhode Island	1
Professor Austin Huggatt School of Business Administration University of California Berkeley 4, California	1	Dr. Craig A. Maguire 4925 Tins Avenue Fair Oaks, California	1	Professor A. E. Ross, Head Department of Mathematics University of Notre Dame Notre Dame, Indiana	1
Dr. C. C. Holt Department of Economics University of Wisconsin Madison 6, Wisconsin	1	Benoit Mandelbrot International Business Machines Corporation Research Center P. O. Box 218, Lamb Estate Yorktown Heights, New York	1	Professor Jerome Rothenberg Department of Economics Northwestern University Evanston, Illinois	1
Dr. John W. Hooper Cowles Foundation for Research in Economics Yale Station, Box 2125 New Haven, Connecticut	1	Professor Julia Margolis Department of Business Administration University of California Berkeley 4, California	1	Professor Albert H. Rubenstein Department of Industrial Engineering Northwestern University Evanston, Illinois	1



Professor Herman Rubin Department of Statistics Michigan State University East Lansing, Michigan	1	Professor J. L. Walsh Department of Mathematics Harvard University Cambridge 38, Massachusetts	1	Takashi Negishi 112 Sanyacho Meguroku Tokyo, JAPAN	1
Professor Richard S. Rudner Department of Philosophy Michigan State University East Lansing, Michigan	1	Dr. T. Whittin School of Industrial Management Mass. Institute of Technology Cambridge 39, Massachusetts	1	Dr. Hukukane Mikaido Institute of Social and Economic Research Osaka University Toyonaka, Osaka, JAPAN	1
Professor P. A. Samuelson Department of Economics M. I. T. Cambridge 39, Massachusetts	1	Mr. Philip Wolfe The RAND Corporation 1700 Main Street Santa Monica, California	1	Dr. Teunehiko Watanabe Department of Economics Goshu University Majiro, Tohshimaku Tokyo, JAPAN	1
Dr. I. Richard Savage School of Business Vincent Hall University of Minnesota Minneapolis 14, Minnesota	1	Professor J. Wolfowitz Department of Mathematics Cornell University Ithaca, New York	1	Professor Takuma Yasui Department of Economics Tohoku University Sendai, JAPAN	1
Professor Andrew Schultz, Jr. Dept. of Industrial Engineering Cornell University Ithaca, New York	1	Professor Robert J. Wilson CEIR, Inc. 9171 Wilshire Blvd. Beverly Hills, California	1	<u>Other Foreign Addresses</u>	
Professor H. A. Simon Dept. of Industrial Administration Carnegie Institute of Technology Pittsburgh 13, Pennsylvania	1	Mr. Marshall K. Wood, Chief Industrial Vulnerability Branch Office of Ass't. Sec. of Defense Washington 25, D. C.	1	Jan Kneate Department of Economics University of Sydney Sydney, AUSTRALIA	1
Mr. J. R. Stinson Bureau of Supplies and Accounts Code (W1) Arlington Annex U. S. Department of the Navy Washington 25, D. C.	1	Professor M. A. Woodbury Department of Mathematics New York University New York 53, New York	1	Professor David Slater Queen's University Kingston, Ontario, CANADA	1
Professor Vernon Smith Department of Economics Purdue University West Lafayette, Indiana	1	<u>Distribution via ONR London</u>		Additional copies for project leader and assistants and reserve for future requirements	50
Professor Laurie Snell Department of Mathematics Dartmouth College Hanover, New Hampshire	1	Commanding Officer Branch Office Navy No. 100 Fleet Post Office New York, New York			
Professor Robert Solow Department of Economics M. I. T. Cambridge 39, Massachusetts	1	Professor Maurice Allais 62 Boulevard St. Michel (VI <sup>e</sup> ) Paris 6e, FRANCE	1		
Professor Robert Summers Department of Economics University of Pennsylvania Philadelphia, Pennsylvania	1	Mr. William M. Gorman University of Birmingham Birmingham, ENGLAND	1		
Professor Gerald Thompson Dept. of Industrial Administration Carnegie Institute of Technology Pittsburgh 13, Pennsylvania	1	Mr. Frank Hahn Department of Economics Churchill College Cambridge, ENGLAND	1		
Professor H. P. Thrall Department of Mathematics University of Michigan Ann Arbor, Michigan	1	Dr. Rudolf Huserer Institut für angewandte Mathematik Universität Bern Bern, SWITZERLAND	1		
Professor L. M. Tichvinsky Department of Engineering University of California Berkeley 4, California	1	M. Jacques Lesourne Société des Mathématiques Appliquées 55 rue Magador Paris 6e, FRANCE	1		
Professor James Tobin Council of Economic Advisers Executive Office of The President Washington 25, D. C.	1	Dr. Edmond Malinvaud Institut National de la Statistique et des Etudes Economiques 29, quai Branly Paris, FRANCE	1		
Professor C. E. Tompkins Dept. of Mathematics University of California Los Angeles 24, California	1	Professor Maurice McManus Faculty of Commerce and Social Science University of Birmingham Birmingham, ENGLAND	1		
Professor A. W. Tucker Fine Hall, Box 708 Princeton, New Jersey	1	Professor Dr. Heinz Sauermann Institut für Preisverkehrswissenschaft Grafstrasse 59 Frankfurt a. M., GERMANY	1		
Professor Hirofumi Uzawa Behavioral Sciences 202 Junipero Serra Stanford, California	1	Professor Henri Theil Econometric Institute Netherlands School of Economics Rotterdam, NETHERLANDS	1		
Professor D. F. Votaw, Jr. Department of Economics Yale University New Haven, Connecticut	1	<u>Distribution via ONR San Francisco</u>			
Professor W. A. Wallis 207 Haskell Hall University of Chicago Chicago 37, Illinois	1	U. S. Attache Attache for Air (Tokyo, Japan) APO - 500 San Francisco, California			
		Professor Michio Morishima Institute of Social and Economic Research Osaka University Toyonaka, Osaka, JAPAN	1		

Contract Nonr-225(50)  
May 1962  
(231)