

UNCLASSIFIED

AD 285 049

*Reproduced
by the*

**ARMED SERVICES TECHNICAL INFORMATION AGENCY
ARLINGTON HALL STATION
ARLINGTON 12, VIRGINIA**



UNCLASSIFIED

NOTICE: When government or other drawings, specifications or other data are used for any purpose other than in connection with a definitely related government procurement operation, the U. S. Government thereby incurs no responsibility, nor any obligation whatsoever; and the fact that the Government may have formulated, furnished, or in any way supplied the said drawings, specifications, or other data is not to be regarded by implication or otherwise as in any manner licensing the holder or any other person or corporation, or conveying any rights or permission to manufacture, use or sell any patented invention that may in any way be related thereto.

CATALOGED BY ASTIA
AS AD NO. _____

285049

285 049

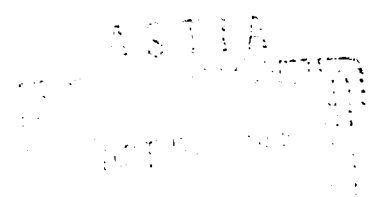
HIGH POWER CAPABILITIES
OF
WAVEGUIDE SYSTEMS

Sixth Quarterly Progress Report
May 1, 1962 to July 31, 1962

Contract NObsr - 85190
Index No. SR0080302, ST 9604

Department of the Navy
Bureau of Ships
Electronics Division

MICROWAVE
ASSOCIATES,
INC.



Best Available Copy

Sixth Quarterly Progress Report
May 1, 1962 to July 31, 1962

HIGH POWER CAPABILITIES
OF
WAVEGUIDE SYSTEMS

Contract NObsr - 85190
Index No. SR0080302, ST 9604

Department of the Navy
Bureau of Ships
Electronics Division

Prepared by:

Dr. Meyer Gilden
John Antonucci

Approved by:

Dr. Lawrence Gould

MICROWAVE ASSOCIATES, INC.
Burlington, Massachusetts

TABLE OF CONTENTS

	<u>Page No.</u>
ABSTRACT.....	1
LIST OF ILLUSTRATIONS.....	11
PURPOSE.....	111
INTRODUCTION.....	1
DETAILED FACTUAL INFORMATION.....	2
Component Testing.....	2
Diffusion Lengths.....	2
Handbook Preparation.....	4
CONCLUSIONS.....	5
PLANS FOR THE NEXT INTERVAL.....	6
ILLUSTRATIONS	

ABSTRACT

This report discusses further the concept and utility of the diffusion length. An example is given of its application to the solution for electric field strength at breakdown. Close to breakdown threshold, the diffusion length varies rapidly, further increasing the sensitivity of breakdown to pulse length. This is illustrated in terms of percent "over-voltage".

LIST OF ILLUSTRATIONS

- Figure 1 Graphical Solution of Non-uniform Breakdown Problem
Figure 2 Diffusion Length in Air Filled Rectangular Waveguide
Figure 3 The Effect of Percent Over-voltage on Pulse Length

PURPOSE

The purpose of this program is to study the various effects in waveguide systems which lead to failures at ultra-high power levels where high average as well as high peak power become limiting factors. Ultimately a handbook will be prepared to serve as a guide for system's engineers. To achieve the objectives of the program a survey is being made of organizations using ultra-high power; further analysis and theory is being carried out, and experiments are being performed.

INTRODUCTION

In the previous reports, information has been presented for the revised handbook. One addition to the handbook will be the relationship of the diffusion length to breakdown under non-uniform field conditions. In the last report the use of the diffusion length was discussed.

One subject of the present report is that of obtaining the value of the electric field strength to pressure, E/p , when waveguide dimensions and pressure are given. The other subject of this report is a discussion of the influence of the non-uniformity of the field on breakdown near threshold under short pulse conditions. The diffusion length enters through its relationship to the non-uniformity of the field.

DETAILED FACTUAL INFORMATION

Component Testing

The high power measurements on components has been delayed by the lack of high power windows required to isolate the component under test. Part of the delay was also due to the need to shift the experiment to S band frequencies. Recently we have obtained several high power windows and expect to proceed with the measurements.

Diffusion Lengths

The meaning and use of the diffusion length was briefly discussed in the previous progress report. In one type of problem discussed the ratio of electric field strength to pressure, E/p, is sought when the waveguide dimensions and pressure are given. Since the diffusion length is generally a function of the unknown quantity E/p (see Figure 1a) there is no direct method for ascertaining its value. Therefore as a first approximation the value of diffusion length is assumed to be that corresponding to a uniform electron production in the volume,

$$\Lambda_0^2 = \left[\left(\frac{\pi}{a} \right)^2 + \left(\frac{\pi}{b} \right)^2 \right]^{-1}$$

for rectangular waveguide.

With this first approximation for $p\Lambda$, a value for E/p is obtained from the universal breakdown curve (see Figure 1b). With this value of E/p a new value of Λ is obtained from Figure 1a. Now use this second value of Λ to compute $p\Lambda$ for use in Figure 1b. Thus a second value is obtained for E/p . This procedure is repeated until E/p converges to a particular value. The initial value of E/p corresponds to that for breakdown under uniform field conditions. The final value of E/p is generally greater and accounts for the non-uniformity of the electric field.

The diffusion length is indicative of the rate of loss of electrons by diffusion. When the diffusion length is small, the rate of diffusion is generally large. Therefore, the smaller the diffusion length, the slower is the rate of build up of electron density; this means a longer time would be required for breakdown. Under short pulse conditions the rate of electron build up can be low enough so that breakdown will not occur. Under non-uniform field conditions, because the ionization region becomes small near threshold value of E/p , the diffusion length also becomes small near threshold (see Figure 2). This raises the value of E/p required for breakdown and may be referred to as "diffusion controlled" threshold. This is illustrated in Figure 3 by a plot of percent "over-voltage" [the threshold value of (E/p) equals 31.5 for air] for breakdown in rectangular waveguide as a function of $p\tau$ with p_b as a parameter. It is convenient to present the information in terms of the normalized quantities E/p , p_b , and $p\tau$. The effect of the uniformity of the field

is also shown for a particular value of p_b . The breakdown field for the non-uniform case is seen to be larger than the uniform case (dashed curve in Figure 3). Under pulsed conditions close to threshold, the non-uniformity is seen to lead to a larger pulse length for breakdown than for the uniform case. The variation of Λ with E/p is taken into account in the graph. Close to threshold or close to "diffusion controlled" threshold the pulse length also becomes very sensitive to amplitude variations. With reference to Figure 3, the pulse width for breakdown varies rapidly with percent over-voltage. The closer to threshold, the more rapid is the variation.

This discussion has pointed out that the non-uniformity in electric field in a waveguide contributes to a rapid variation in the pulse length required for breakdown near threshold.

Handbook Preparation

Additional graphs are being prepared for the handbook as has been described in the earlier reports.

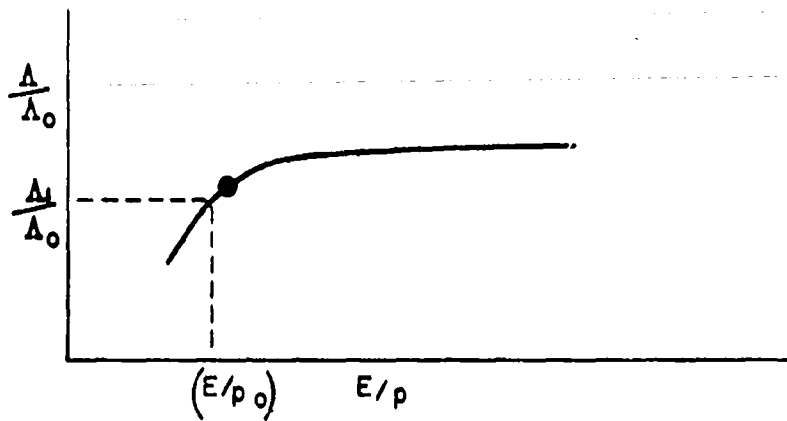
CONCLUSIONS

By using the universal breakdown curve and a knowledge of the diffusion length the value of electric field strength can be determined. However, as the diffusion length is not known exactly for non-uniform conditions, a method of successive approximations is necessary for obtaining the value of E/p .

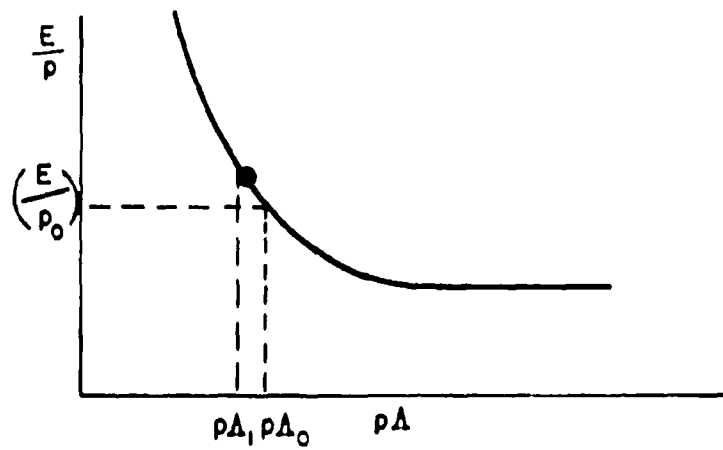
Under pulsed conditions the non-uniformity in electric field in a waveguide contributes to the rapid variation in pulse length required for breakdown near threshold. Thus the pulse length becomes larger under non-uniform conditions than for comparable uniform field cases.

PLANS FOR THE NEXT INTERVAL

In the next interval final cavity measurements over a wide range of pressures should be completed for air, SF₆ and Freon 12. Also, the testing of components will be carried out in S-band instead of C-band. The draft for the handbook will be prepared.



a) DIFFUSION LENGTH CURVE



b) UNIVERSAL BREAKDOWN CURVE

FIGURE 1
 GRAPHICAL SOLUTION OF NON-UNIFORM
 BREAKDOWN PROBLEM

FIGURE 2
DIFFUSION LENGTH
IN AIR FILLED RECTANGULAR WAVEGUIDE

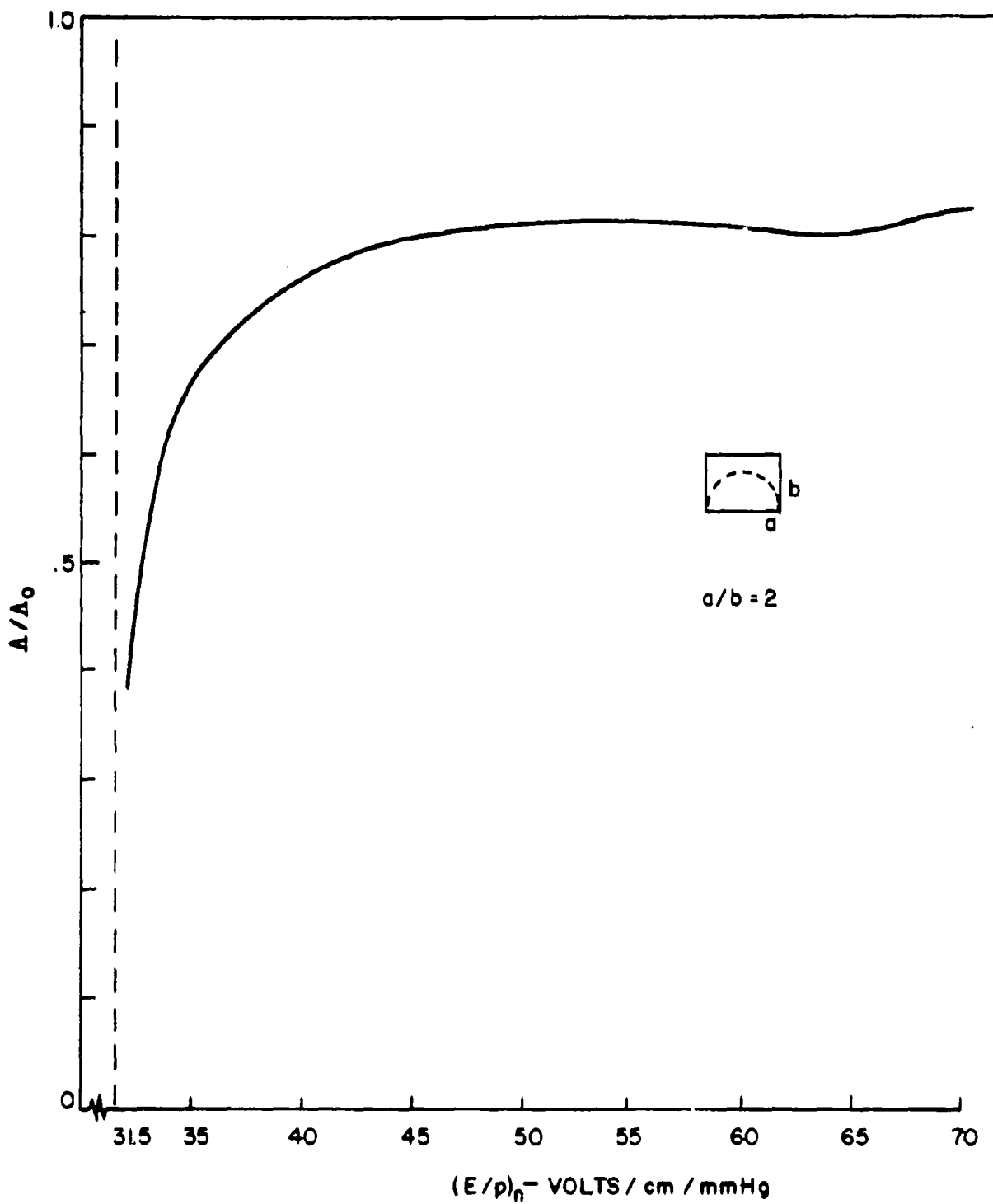
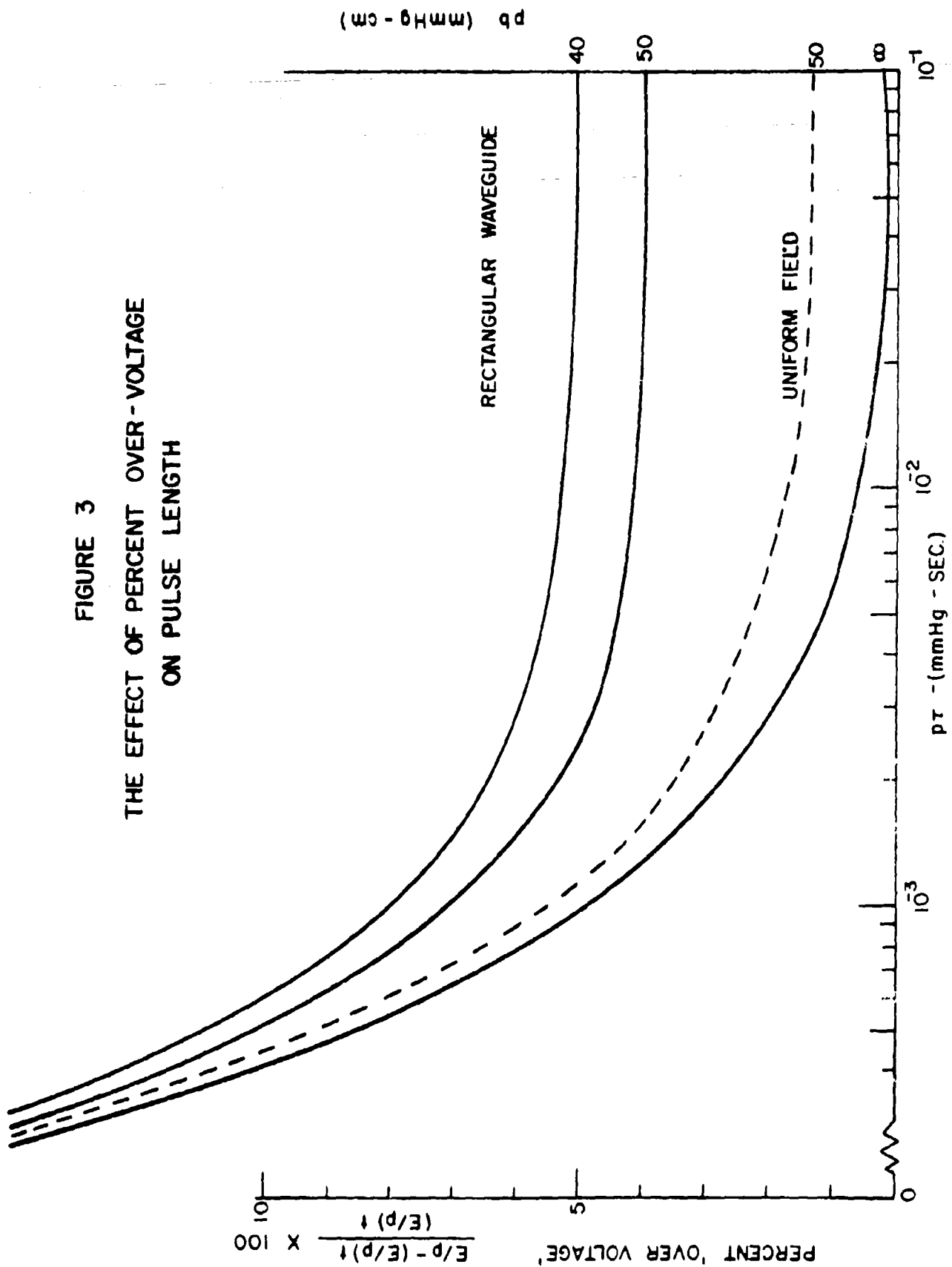


FIGURE 3
 THE EFFECT OF PERCENT OVER-VOLTAGE
 ON PULSE LENGTH



$p\tau$ (mmHg - cm)

RECTANGULAR WAVEGUIDE

UNIFORM FIELD

$p\tau$ - (mmHg - SEC.)

Contract No. NObsr 85190
Sixth Quarterly Progress Report

DISTRIBUTION LIST

	<u>No. of Copies</u>
Bureau of Ships Washington 25, D. C. Attn: Code 335	1
Bureau of Ships Washington 25, D. C. Attn: Code 685 (Mr. Hill)	1
Bureau of Ships Washington 25, D. C. Attn: Code 675 (Mr. Jenkins)	1
Bureau of Ships Washington 25, D. C. Attn: Code 681A2	1
Chief, Bureau of Weapons Washington 25, D. C. Attn: RAAV-53	1
Commander, New York Naval Shipyard (Mat. Lab.) Brooklyn 1, New York Attn: Code 923	1
Director, Naval Electronics Laboratory San Diego 52, California	1
Director, Naval Research Laboratory Washington 25, D. C. Attn: Code 5251	1
Commanding General U. S. Army Signal Research and Development Labs. Fort Monmouth, New Jersey Attn: SIGRA/SL-PEE Mr. Lipetz	1
Commanding General Aeronautical System Division Wright-Patterson Air Force Base, Ohio Attn: WDPVE-1 Mr. Duree	1

Contract No. NObSR 85190
Sixth Quarterly Progress Report

-2-

No. of Copies

Commanding General Rome Air Development Center, ESD Griffiss Air Force Base, New York Attn: Mr. P. Romanelli RCLRA-2	1
Commanding General Air Force Research Division L. G. Hanscom Field Bedford, Massachusetts Attn: Mr. C. E. Ellis, CRRDM	1
Armed Services Technical Information Agency Arlington Hall Arlington, Virginia	6
Secretariat Advisory Group on Electronic Devices 346 Broadway, 8th Floor New York, New York	3
Westinghouse Electric Corporation Baltimore, Maryland Attn: Mr. C. H. McAdie	1
General Electric Company Syracuse, New York Attn: Mr. Norm Hoy	1
Sperry Gyroscope Company Great Neck Long Island, New York	1
Lockheed Electronics Company Plainfield, New Jersey Attn: Mr. J. Brehm	1
Gilfillan Brothers, Inc. 1815 Venice Boulevard Los Angeles 6, California Attn: Mr. Thomas Kinaga	1
Director U.S. Army Signal Research and Development Lab. Fort Monmouth, New Jersey Attn: I. Reingold SIGRA/SL-PRM	1